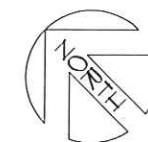
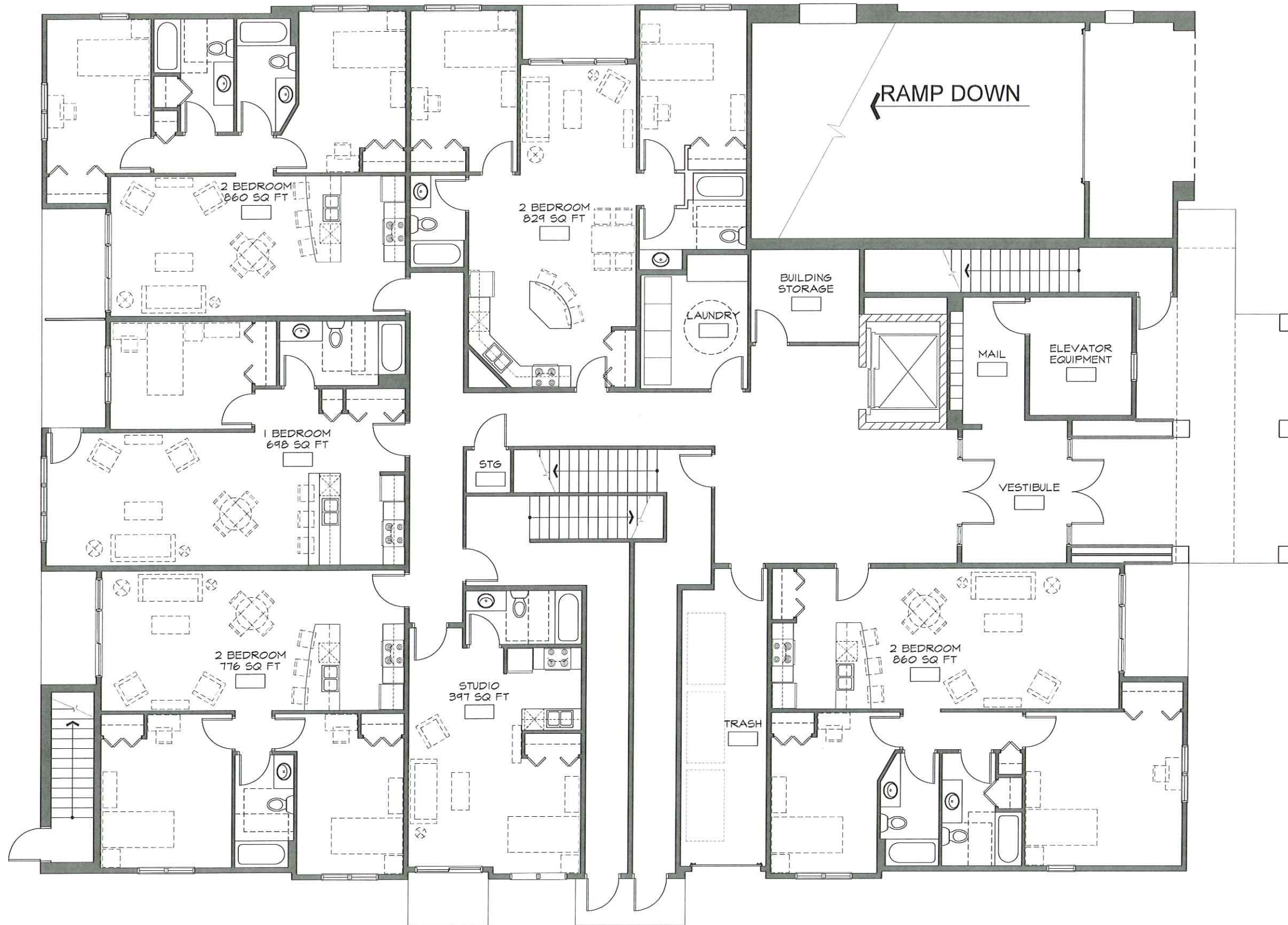


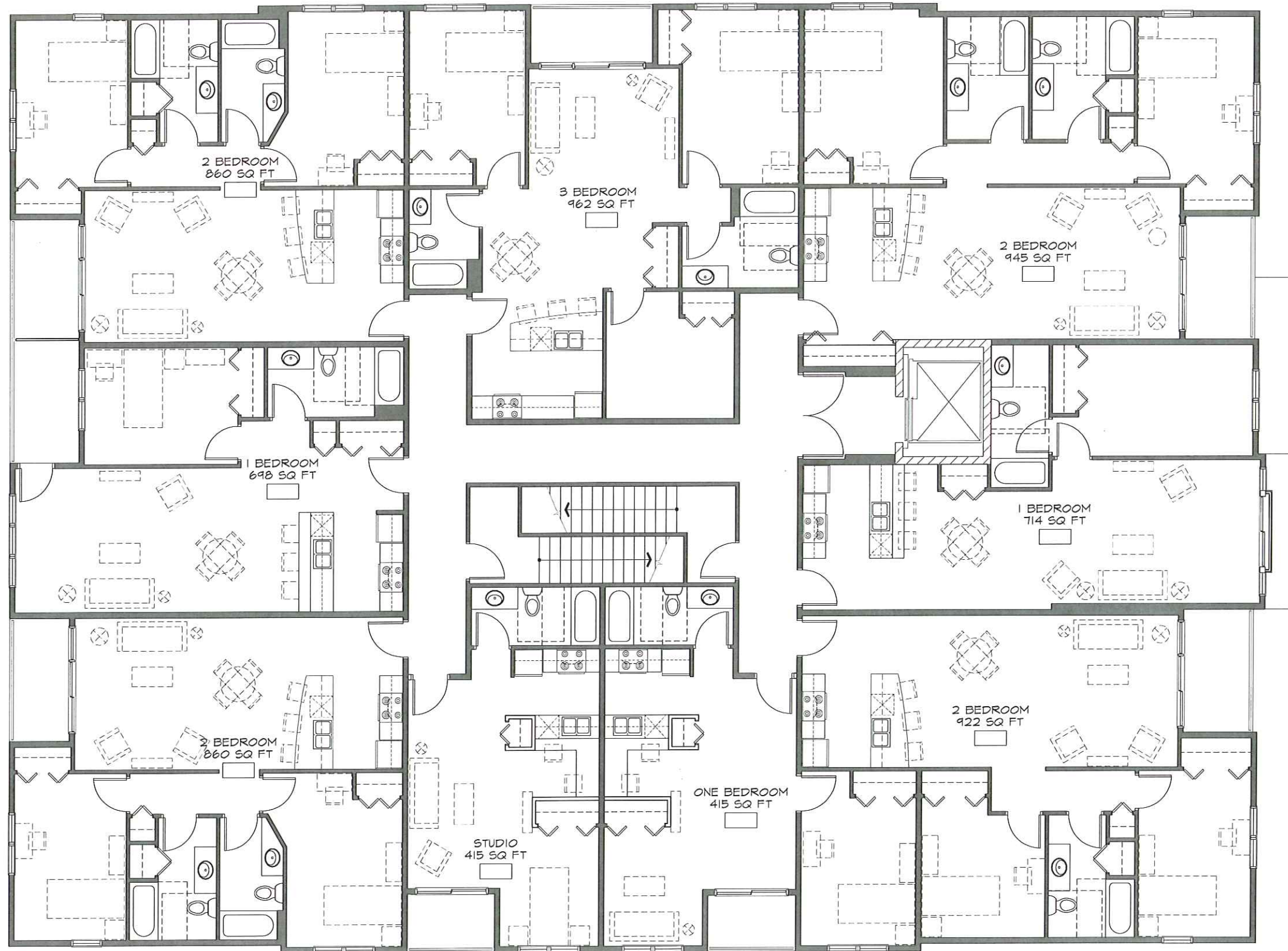
5-19-10

©2010 GARY BRINK & ASSOC. Any duplication, reproduction, or use by any other party is prohibited unless prior written authorization is received from GARY BRINK & ASSOC.

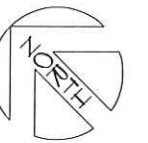
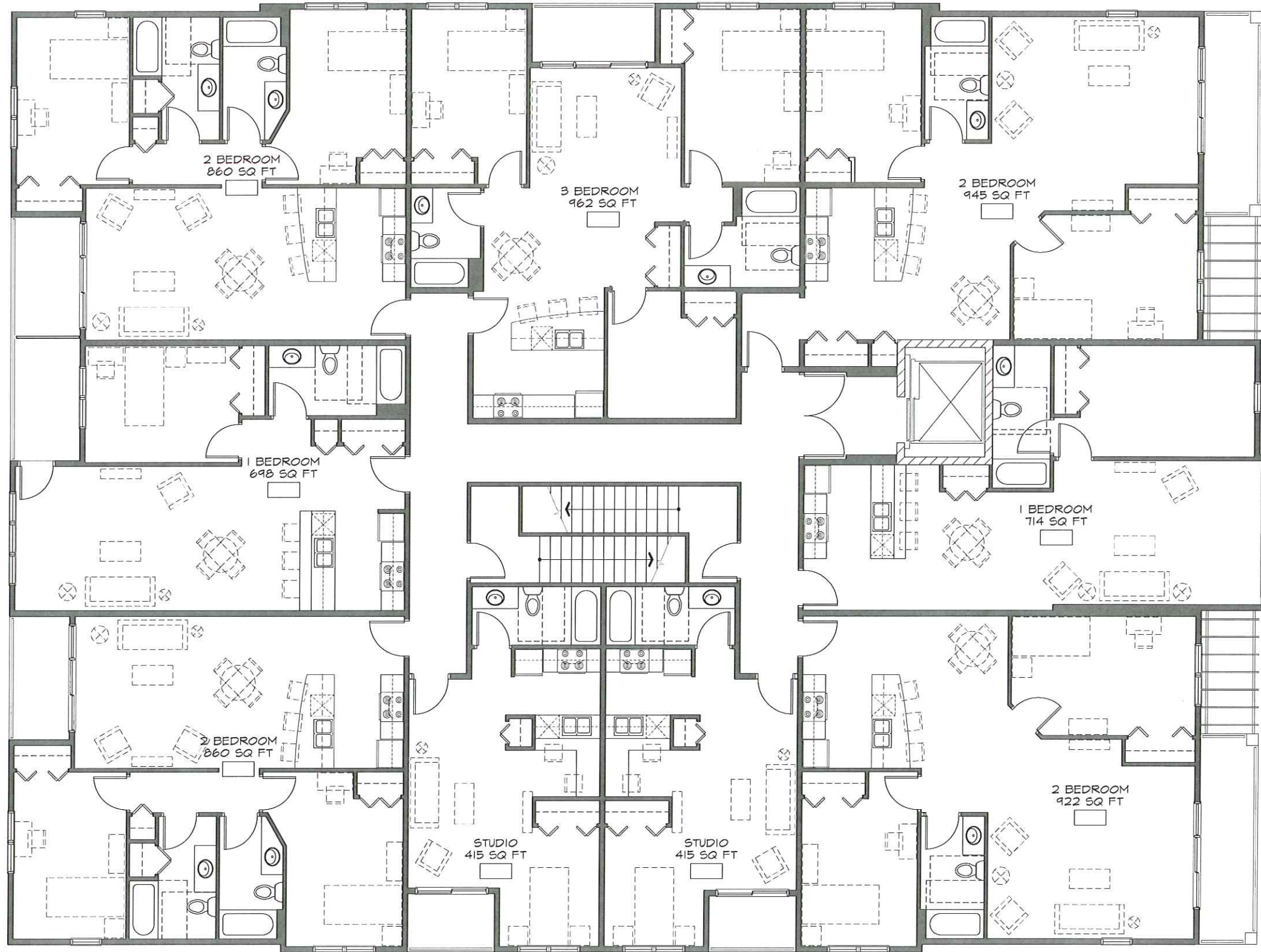
416 Mifflin Street Housing Development - Madison, WI
 Lower Level Floor Plan 1"-10'



©2010 GARY BRINK & ASSOC. Any duplication, reproduction, or use by any other party is prohibited unless prior written authorization is received from GARY BRINK & ASSOC.



©2010 GARY BRINK & ASSOC. Any duplication, reproduction, or use by any other party is prohibited unless prior written authorization is received from GARY BRINK & ASSOC.



©2010 GARY BRINK & ASSOC. Any duplication, reproduction, or use by any other party is prohibited unless prior written authorization is received from GARY BRINK & ASSOC.

T.O. PARAPET
ELEV. = 42'-0"

T.O. PARAPET
ELEV. = 45'-0"



©2010 GARY BRINK & ASSOC. Any duplication, reproduction, or use by any other party is prohibited unless prior written authorization is received from GARY BRINK & ASSOC.

416 Mifflin Street Housing Development - Madison, WI

Southeast Elevation (Mifflin Street)



**Connery
Fedler**

T.O. PARAPET
ELEV. = 45'-0"
T.O. PARAPET
ELEV. = 42'-0"



©2010 GARY BRINK & ASSOC. Any duplication, reproduction, or use by any other party is prohibited unless prior written authorization is received from GARY BRINK & ASSOC.



©2010 GARY BRINK & ASSOC. Any duplication, reproduction, or use by any other party is prohibited unless prior written authorization is received from GARY BRINK & ASSOC.

416 Mifflin Street Housing Development - Madison, WI

Southwest Elevation



©2010 GARY BRINK & ASSOC. Any duplication, reproduction, or use by any other party is prohibited unless prior written authorization is received from GARY BRINK & ASSOC.



©2010 GARY BRINK & ASSOC. Any duplication, reproduction, or use by any other party is prohibited unless prior written authorization is received from GARY BRINK & ASSOC.

416 Mifflin Street Housing Development - Madison, WI

Massing Model



**Connery
Fedler**