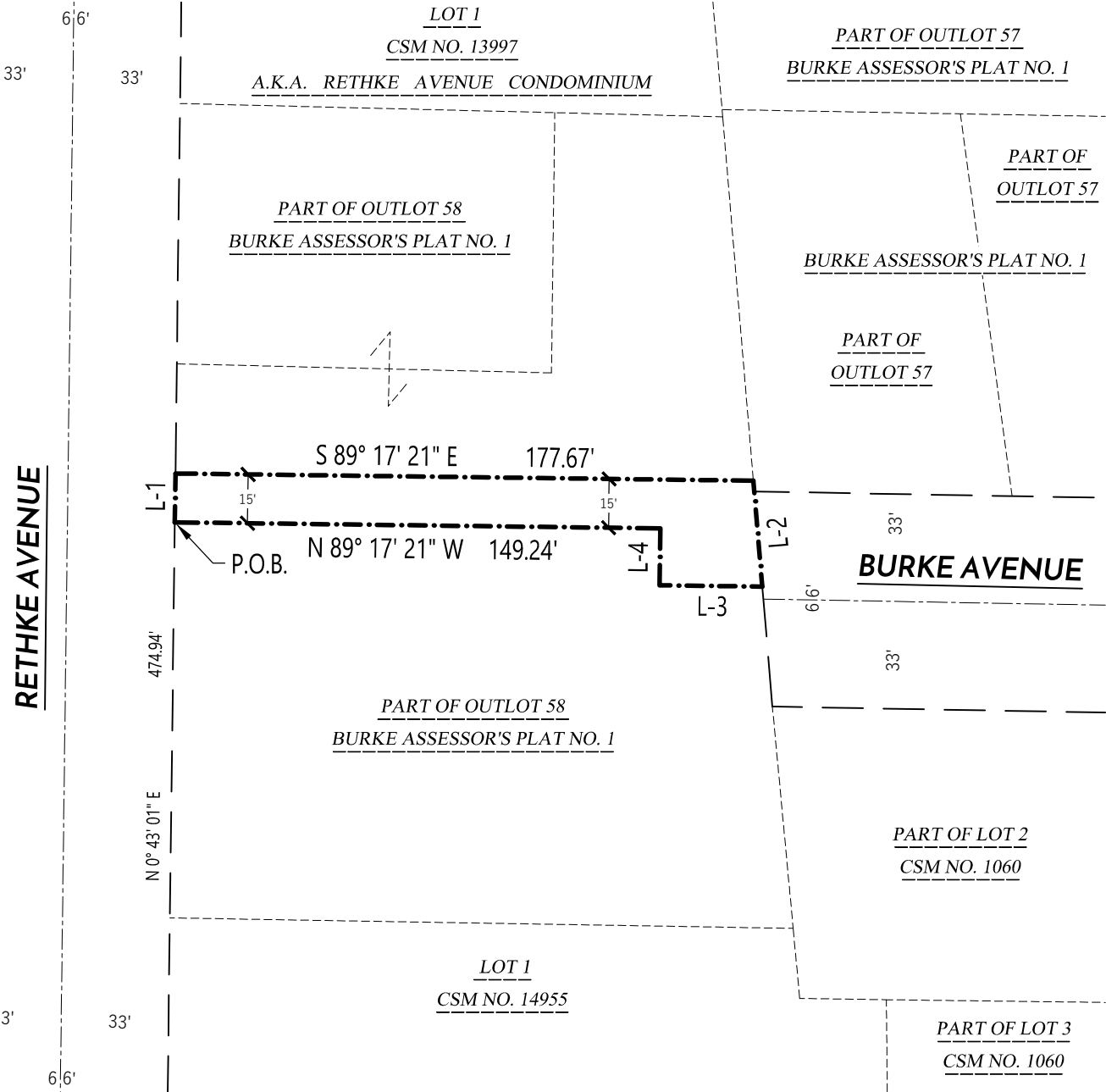


# EXHIBIT C

## PUBLIC PEDESTRIAN AND BIKE PATH EASEMENT

PART OF OUTLOT 58 OF BURKE ASSESSOR'S PLAT NO.1 RECORDED IN VOLUME 9 OF PLATS ON PAGES 15-21 AS DOCUMENT NO. 593673, BEING A PART OF THE THE SOUTHWEST QUARTER OF THE SOUTHEAST QUARTER OF SECTION 32, TOWN 8 NORTH, RANGE 10 EAST, CITY OF MADISON, DANE COUNTY, WISCONSIN.



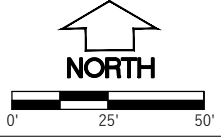
LINE TABLE		
LINE #	BEARING	DISTANCE
L-1	N 0° 43' 01" E	15.00'
L-2	S 04° 49' 25" E	32.66'
L-3	N 89° 16' 45" W	31.58'
L-4	N 00° 42' 39" E	17.50'

**NOTES:**

1. NORTH REFERENCE BASED ON THE WISCONSIN COUNTY COORDINATE SYSTEM, DANE ZONE, GRID NORTH, AS REFERENCED IN CSM 14955, THE LINE BETWEEN THE SOUTH 1/4 CORNER AND THE SOUTHEAST CORNER OF SECTION 32, T7N, R8E, RECORDED TO BEAR S 88° 47' 12" E MONUMENT TO MONUMENT PER SAID CSM.

**LEGEND**

- - - - - SECTION LINE
- — — — — RIGHT-OF-WAY LINE
- - - - - PARCEL LINE
- - - - - EASEMENT LINE



File: W:\2018\180563\_ARCH-ADE Architects - Twisted Fitness.dwg - Twisted Fitness.dwg Layout: EASEMENT EXHIBIT.dwg User: Julie Plotched: Feb 18, 2019 - 10:15am

	PREPARED BY: 312 EAST MAIN STREET MOUNT HOREB, WI 53572 www.wyserengineering.com	PREPARED FOR: MARK PLAVCAN 2114 WINNEBAGO STREET MADISON, WI 53704	SURVEYED BY: --- DRAWN BY: JWS APPROVED BY: JWS	PROJECT NO: 180563 SHEET NO: 1 of 1
--	---	---	---	--