

Legistar No. 07356
Note to Commission
Majestic Theater
215 King Street

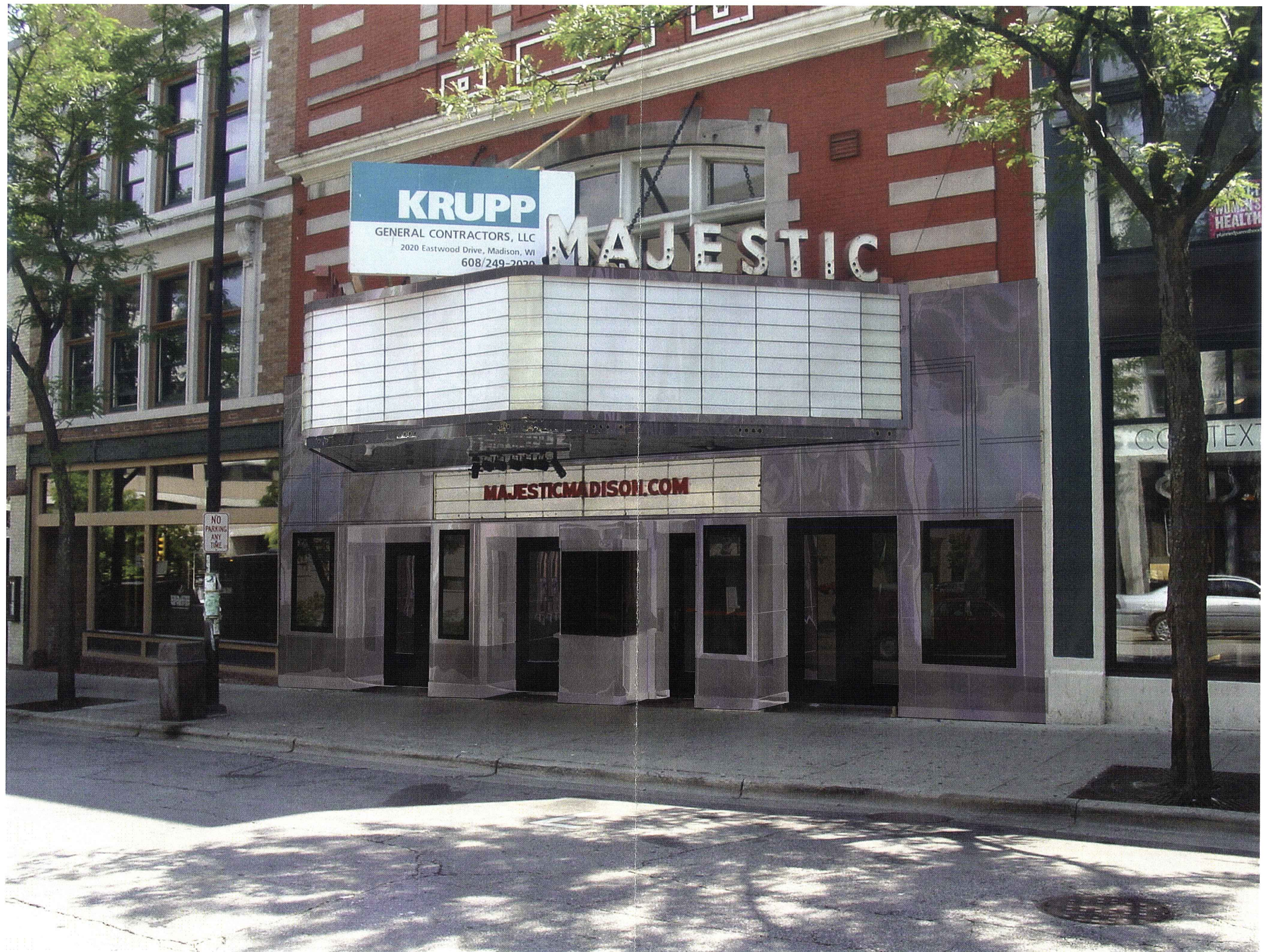
As part of their renovations, the new owners want to spruce up the outside of the theater. At the moment, the front façade probably dates to a big remodeling which occurred in the late 1930s. The façade is made of glazed enamel steel panels in a burgundy-brown on the lower parts with faded yellow panels above, which are also trimmed in black pin striping. The current façade has dents, little holes and some rust spots and looks like it's been neglected for decades, not to mention the outdated color scheme. The marquee also probably dates to the 1930s.

Their intention is to restore the marquee and paint the currently-red banding in a satin-finished metallic chrome. They also wish to paint the porcelain enamel steel panels with the same metallic chrome paint. The burgundy lower sections would be a slightly darker color of chrome metal. They will also repaint the black pin striping.

I think this is a great solution to using the old façade, which has some historic interest, but updating it in a fashion which keeps some of the character of the old and restores the old panels and marquee.

The architect has promised to have a sample area of paint applied to the façade so that its color and sheen can be seen. I will let you know as soon as that is done. Because its is an unusual thing to do, I don't think we should approve it until we have a better idea of what it will look like.

K. H. Rankin 
8-29-07



KRUPP
GENERAL CONTRACTORS, LLC
2020 Eastwood Drive, Madison, WI
608/249-2020

MAJESTIC

MAJESTICMADISON.COM

NO
PARKING
ANY
TIME