



2450 Atwood Avenue
Certificate of Appropriateness
March 18, 2024

Proposed Work

- Construct porte cochere
- Reconfigure parking lot
- Install new louvres for HVAC



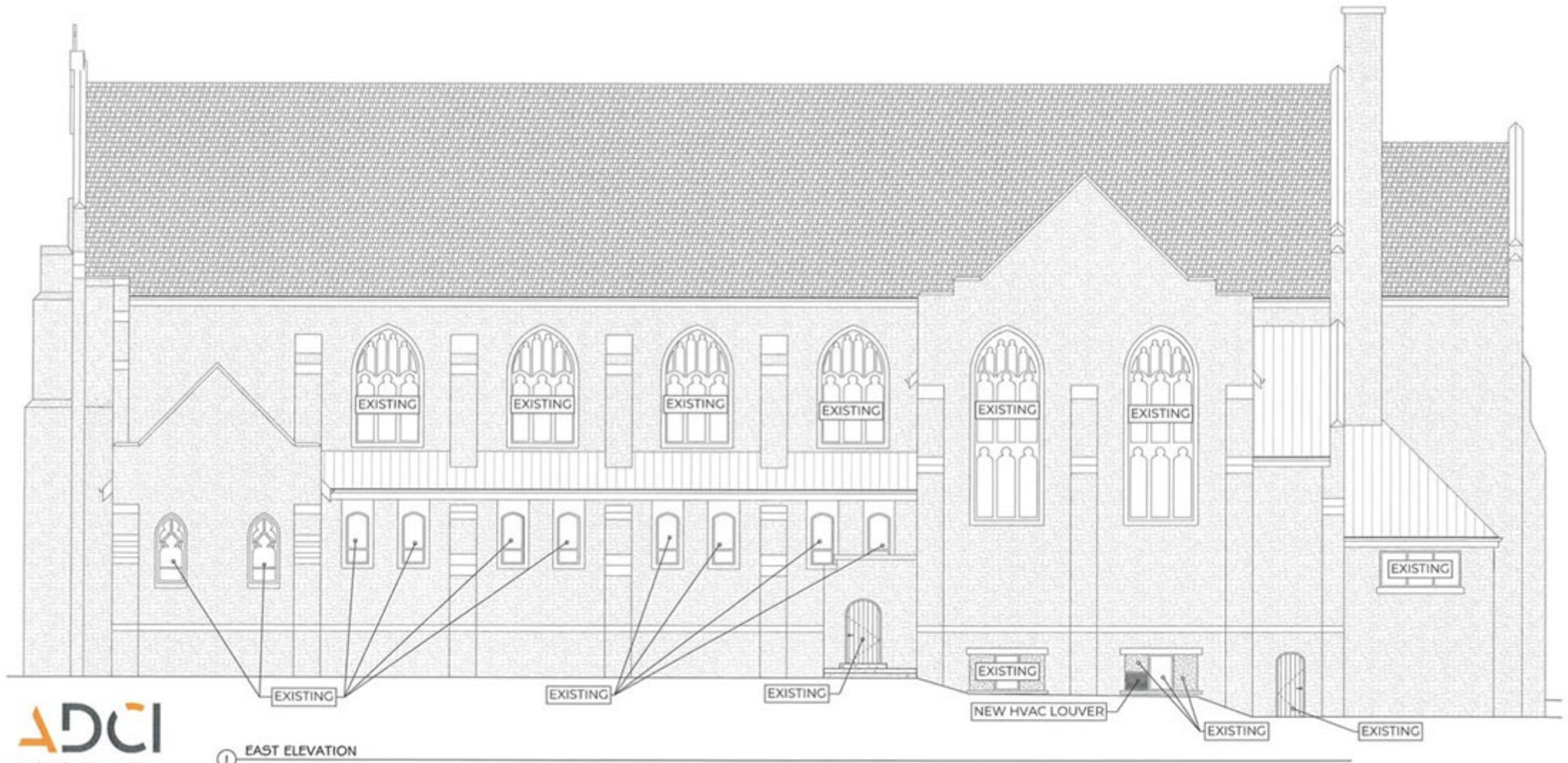
History of Property

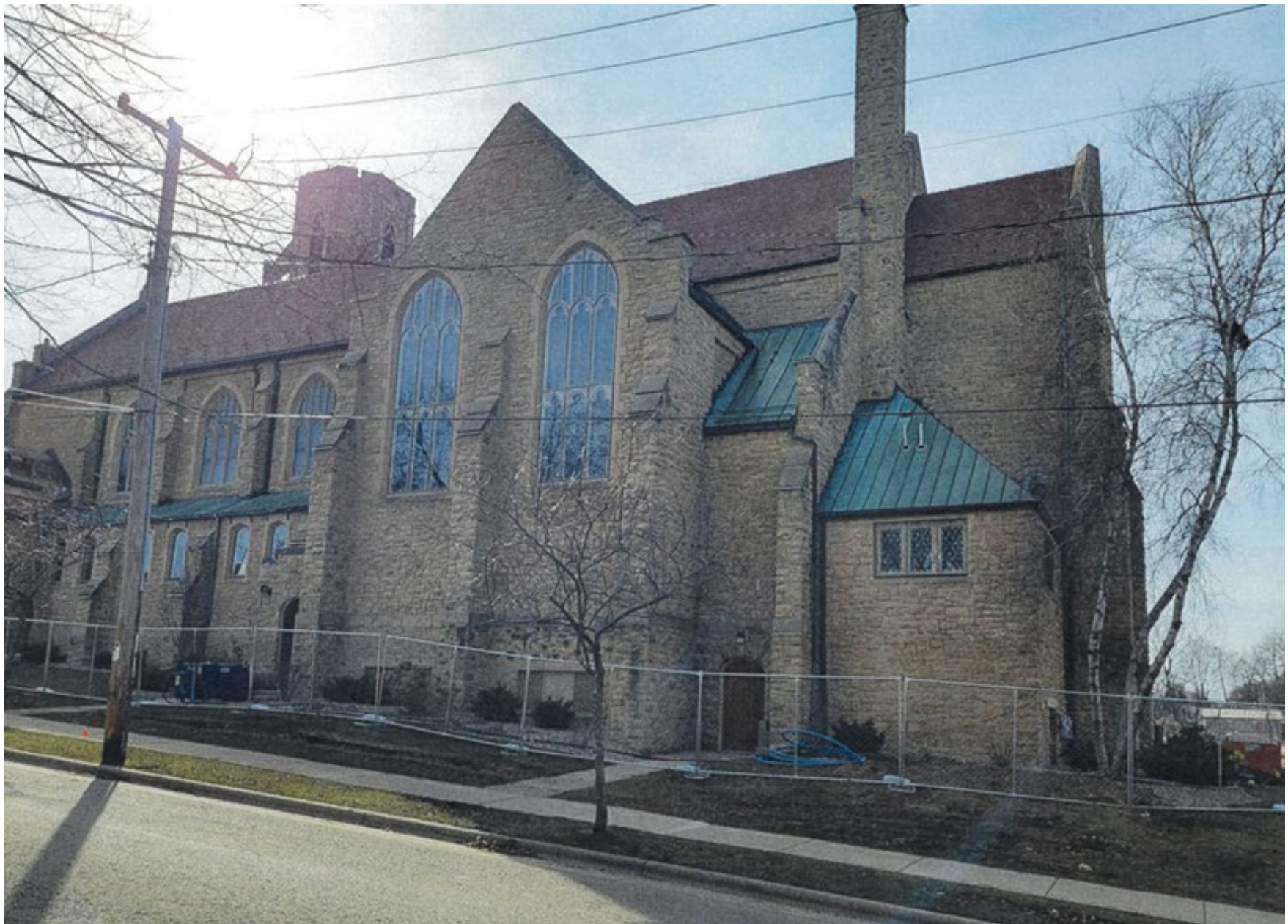
- Constructed 1926
- Designed by JJ Flad
- Late Gothic Revival

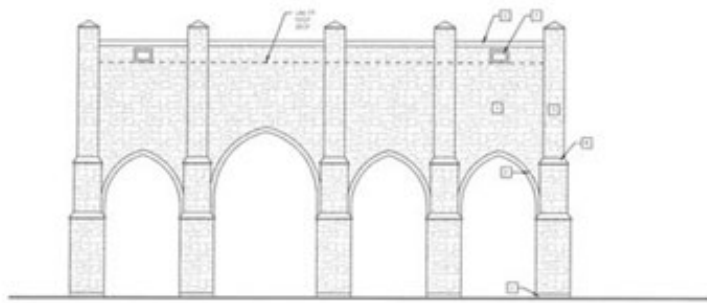




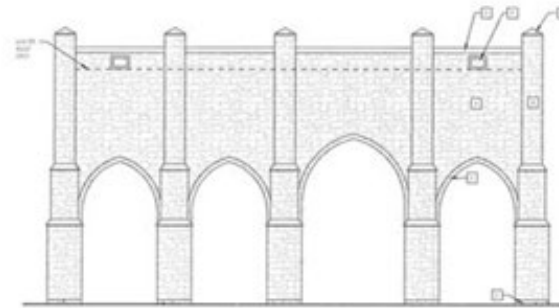






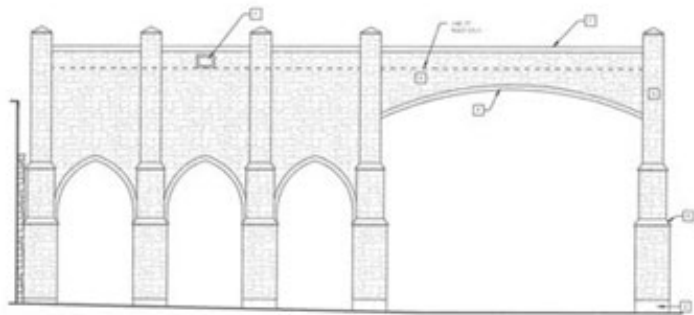


① NORTH ELEVATION

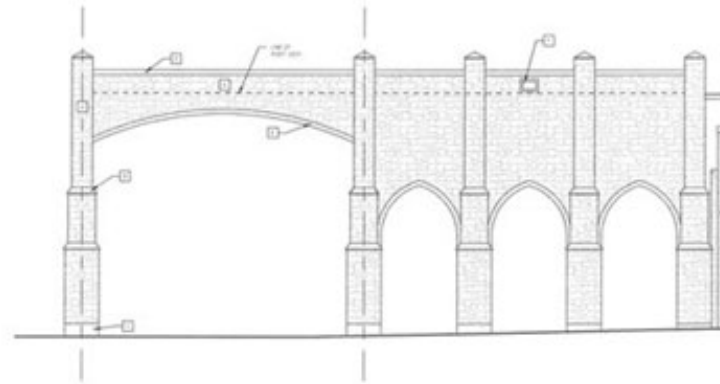


② SOUTH ELEVATION

NO.	DESCRIPTION
1	
2	
3	
4	
5	
6	
7	
8	
9	
10	



③ EAST ELEVATION



④ WEST ELEVATION







PARKING LOT ENTRANCE



TYPICAL POINTED ARCH



TYPICAL PIER

Applicable Standards

SOI

3. Each property will be recognized as a physical record of its time, place and use. Changes that create a false sense of historical development, such as adding conjectural features or elements from other historic properties, will not be undertaken.

9. New additions, exterior alterations, or related new construction will not destroy historic materials, features, and spatial relationships that characterize the property. The new work will be differentiated from the old and will be compatible with the historic materials, features, size, scale and proportion, and massing to protect the integrity of the property and its environment.

10. New additions and adjacent or related new construction will be undertaken in such a manner that, if removed in the future, the essential form and integrity of the historic property and its environment would be unimpaired.



Staff Recommendation

Staff believes that the standards for granting a Certificate of Appropriateness are met and recommends the Landmarks Commission approve the project as proposed.

