

**DIMENSION IV  
MADISON**

Architecture  
Engineering  
Interior Design

313 West Bellline Hwy., Suite 161  
Madison, WI 53713  
phone (608) 229-4444 fax (608) 229-4445

**CONSULTANTS:**



LANDSCAPE  
CONSULTANTS  
303 E. PATTERSON  
SUITE 212  
MADISON, WI 53703  
Phone: (608) 951-3650  
Fax: (608) 951-2330  
www.ksc-la.com

**OAKWOOD VILLAGE  
EAST  
CAMPUS**

5565 TANCHE  
DRIVE  
MADISON, WI 53718

**GENERAL NOTES**

1. LANDSCAPE CONTRACTOR SHALL RESTORE ALL EXISTING LAWN AND LANDSCAPING THAT HAS BEEN DISTURBED BY CONSTRUCTION ACTIVITIES TO ORIGINAL CONDITION.
2. ALL PLANT BEDS ARE TO BE MULCHED WITH AVE. THICKNESS 3" OF SHREDDED CYPRESS MULCH WITH NO LANDSCAPE FABRIC. EXCEPTIONS ARE NOTED ON THE PLAN. PREEMERGENT HERBICIDE SHALL BE APPLIED PRIOR TO MULCHING.
3. ALL PLANT BEDS SHALL BE DEEP TILLED TO A DEPTH OF 18" TO ALLEVIATE COMPACTION FROM CONSTRUCTION EQUIPMENT. 3" OF CERTIFIED COMPOST SHALL BE TILLED INTO THE TOP 6" OF PLANTING BED.
4. SEE SHEET L1.1 FOR TYPICAL PLANTING DETAILS.
5. SEE SHEET L2.3 FOR PLANT LIST.
6. SEE UTILITY PLAN EC.3.1 FOR LOCATIONS OF PROPOSED UTILITIES.

DATE OF ISSUE: 12/29/06

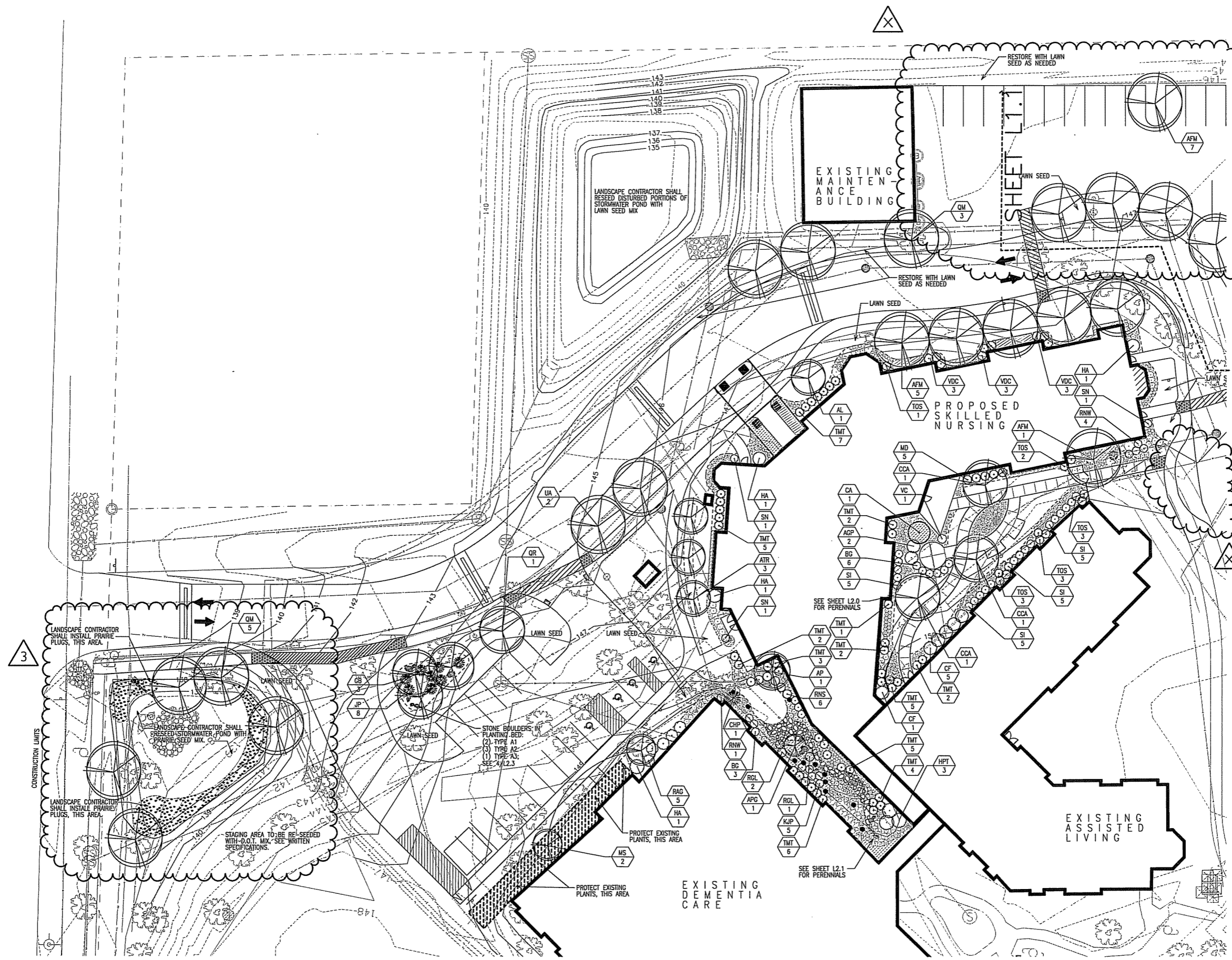
ADDENDUM 2

**REVISIONS:**

1-4-07 Addendum 3  
6-27-07 Addendum X

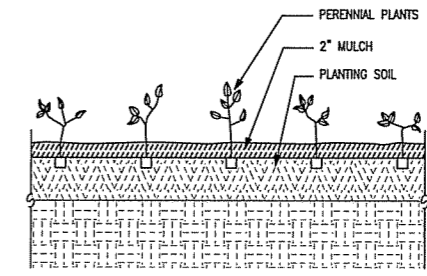
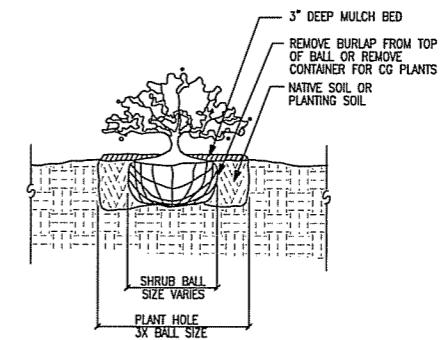
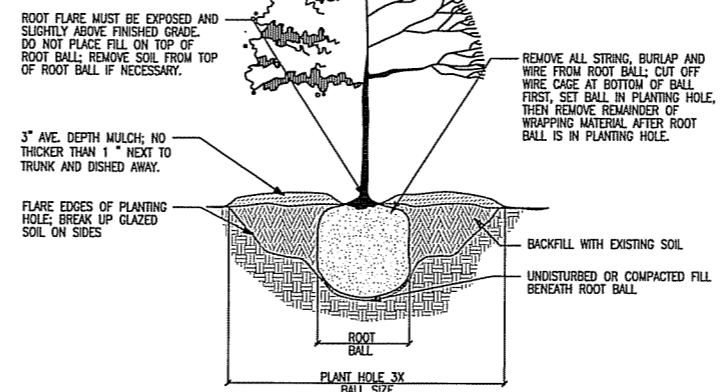
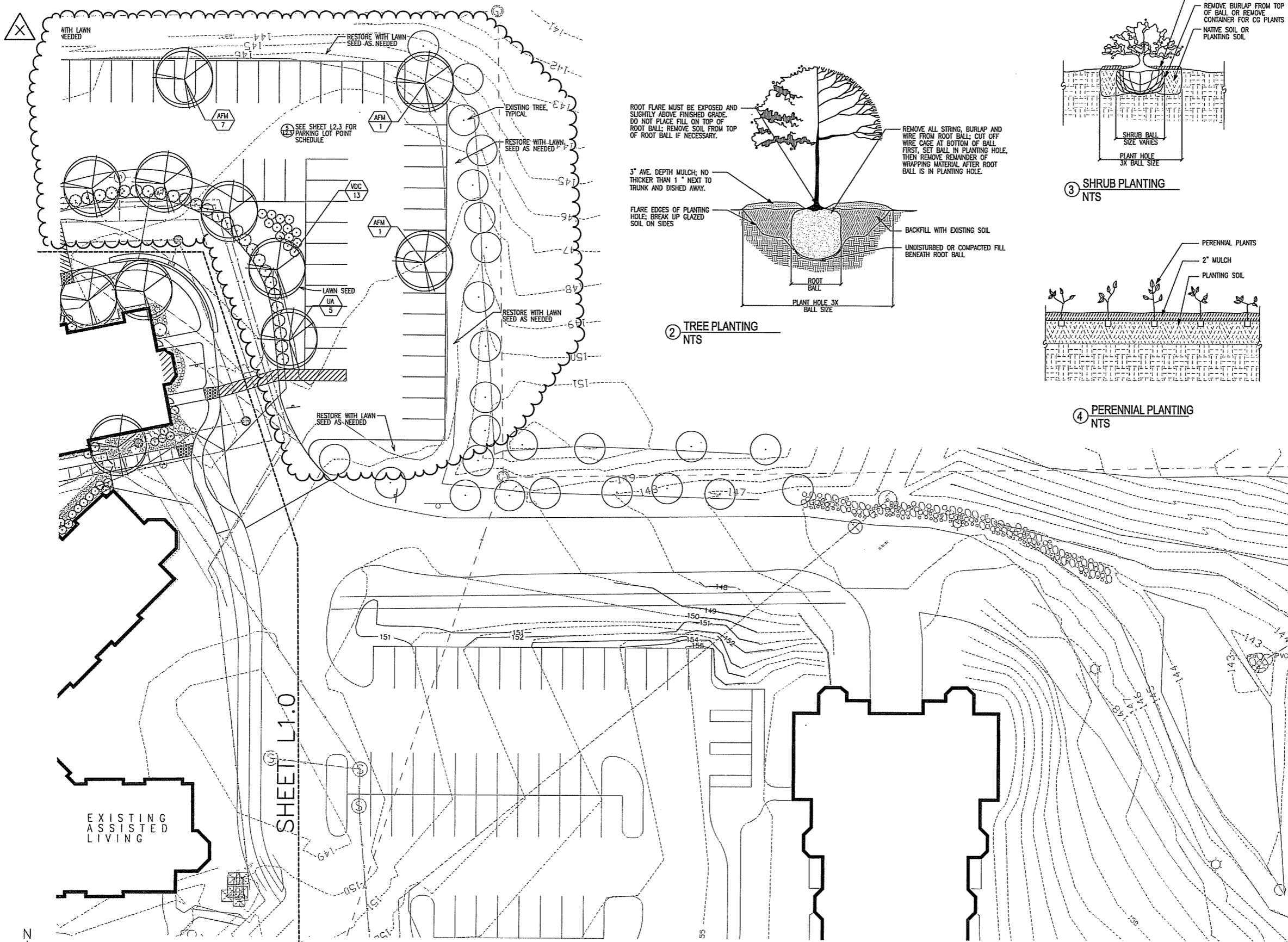
PROJECT # 03034

**NORTHWEST  
PLANTING PLAN**



1 NORTHWEST PLANTING PLAN  
1"=20'

**L1.0**



1 NORTHEAST PLANTING PLAN  
1"=20'

--- SHOVEL CUT EDGE  
--- ALUMINUM EDGE

**DIMENSION IV  
MADISON**

Architecture  
Engineering  
Interior Design  
313 West Beltline Hwy., Suite 161  
Madison, WI 53713  
phone (608) 229-4444 fax (608) 229-4445

**CONSULTANTS:**



**OAKWOOD VILLAGE  
EAST  
CAMPUS**

5565 TANCHO  
DRIVE  
MADISON, WI 53718

- GENERAL NOTES**
1. LANDSCAPE CONTRACTOR SHALL RESTORE ALL EXISTING LAWN AND LANDSCAPING THAT HAS BEEN DISTURBED BY CONSTRUCTION ACTIVITIES TO ORIGINAL CONDITION.
  2. ALL PLANT BEDS ARE TO BE MULCHED WITH AVE. THICKNESS 3" OF SHREDDED CYPRESS MULCH WITH NO LANDSCAPE FABRIC. EXCEPTIONS ARE NOTED ON THE PLAN. PREEMERGENT HERBICIDE SHALL BE APPLIED PRIOR TO MULCHING.
  3. ALL PLANT BEDS SHALL BE DEEP TILLED TO A DEPTH OF 18" TO ALLEVIATE COMPACTION FROM CONSTRUCTION EQUIPMENT. 3" OF CERTIFIED COMPOST SHALL BE TILLED INTO THE TOP 6" OF PLANTING BED.
  4. SEE SHEET L1.1 FOR TYPICAL PLANTING DETAILS
  5. SEE SHEET L2.3 FOR PLANT LIST
  6. SEE UTILITY PLAN EC3.1 FOR LOCATIONS OF PROPOSED UTILITIES

DATE OF ISSUE: 12/29/06  
ADDENDUM 2

REVISIONS:  
6-27-07 Addendum X

PROJECT # 03034

**NORTHEAST  
PLANTING PLAN**

# DIMENSION IV MADISON

Architecture  
Engineering  
Interior Design

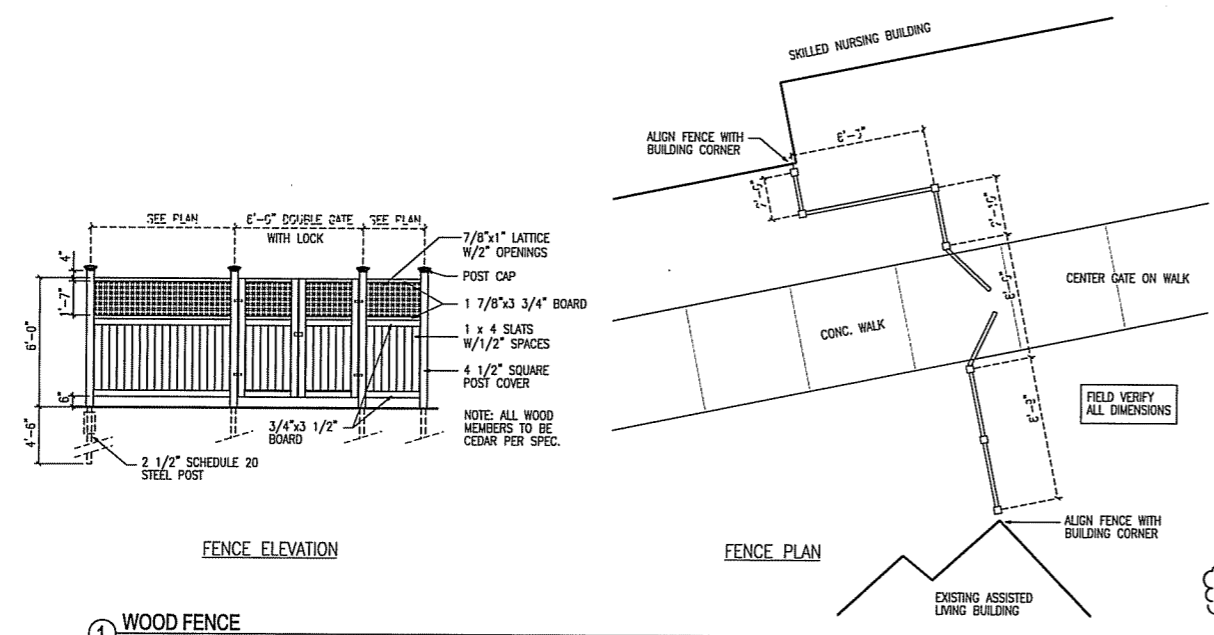
313 West Bellline Hwy., Suite 161  
Madison, WI 53713  
phone (608) 229-4444 fax (608) 229-4445

## CONSULTANTS:

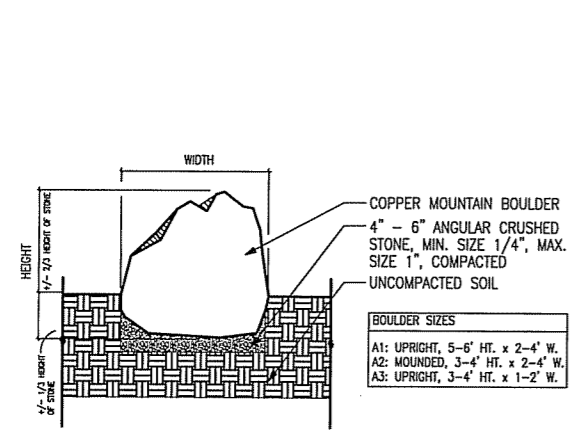


## OAKWOOD VILLAGE EAST CAMPUS

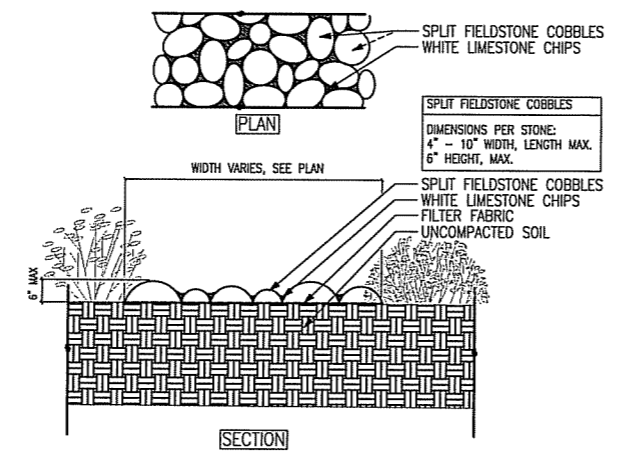
5565 TANCHO  
DRIVE  
MADISON, WI 53718



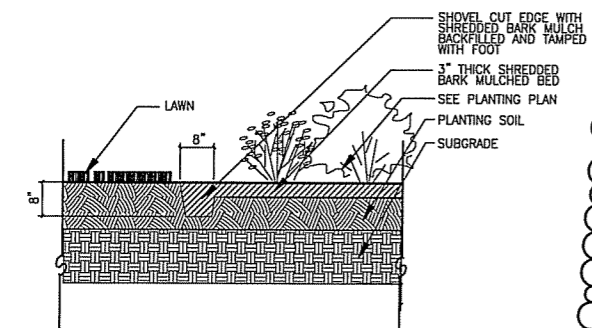
1 WOOD FENCE  
1/4"=1'-0"



2 STONE BOULDER  
1"=1'-0"



3 STONE COBBLE RIBBON  
1"=1'-0"



4 SHOVEL CUT EDGE  
1"=2'-0"

Element	Point Value	Quantity	Points Achieved	Credits	Points
Canopy Tree: 2" - 21/2"	35	7	245	5	175
Deciduous Shrub	2				
Evergreen Shrub	3				
Decorative Wall or Fence (per 10 L.F.)	5				
Earth Berm (per 10 L.F.)					
Avg. Height 30"	5				
Avg. Height 15"	2				
Evergreen Trees	15				
3' height minimum					
Canopy Tree or Small Tree	15				
1 1/2" - 2" Caliper (i.e., Crab, Hawthorn)					
Sub-Totals			245	+	175
Total Points					420

5 PARKING LOT POINT SCHEDULE

code	scientific name	common name	qty. L 1.0	qty. L 1.1	qty. L 2.0	qty. L 2.1	qty. L 2.2	qty. TOTAL	size/root	comments/maintenance notes
<b>Canopy Trees</b>										
AFM	Acer x freemannii 'Morton'	Marmo Freeman Maple	6	3				9	2" Cal/B&B	
CCA	Carpinus caroliniana	Blue Beech	3					3	2" Cal/B&B	
GB	Ginkgo biloba 'Autumn Gold'	Ginkgo	3					3	2" Cal/B&B	
OR	Quercus rubra	Northern Red Oak	1					1	1" Cal/Cont.	
UA	Ulmus x 'Morton'	Accolade Elm	2	5				7	2" Cal/B&B	
QM	Quercus macrocarpa	Bur Oak	8					8	1" Cal/Cont.	
<b>Ornamental Trees</b>										
APG	Acer palmatum 'Garnet'	Garnet Japanese Maple	1					1	4' H/B&B	
AP	Acer pseudosieboldianum	Korean Maple	1					1	6' H/B&B	multi-stem
ATR	Acer truncatum	Purpleleaf Maple	3					3	6' H/B&B	
AL	Amelanchier laevis 'Snowcloud'	Snowcloud Serviceberry	1					1	6' H/B&B	multi-stem
CA	Cornus alternifolia	Pagoda Dogwood	1					1	6' H/B&B	
MS	Malus 'Sutyazam'	Sugar Tyme Crabapple	2					2	1 1/2" Cal. B&B	
<b>Deciduous Shrubs</b>										
AGP	Amelanchier x grandiflora 'Prince William'	Prince William Amelanchier	2					2	3' H/Cont. or B&B	
CF	Calycanthus floridus	Sweetshrub	6					6	2' H/Cont.	
HA	Hydrangea arborescens 'Annabelle'	Annabelle Hydrangea	4					4	18" H/Cont.	
HPT	Hydrangea paniculata 'Tardiva'	Tardiva Panicle Hydrangea	3					3	3' H/Cont. or B&B	
KJP	Kentia japonica 'Picta'	Kentia	5					5	18" H/Cont.	
RAG	Rhus aromatica 'Gro Low'	Gro-Low Fragrant Sumac	5	27				32	18" Spd/Cont.	
RNW	Rosa 'Nearly Wild'	Nearly Wild Rose	5					5	18" H/Cont.	
SN	Spiraea nipponica 'Halward's Silver'	Halward's Silver Spirea	5					5	2' H/Cont.	
SI	Stephanandra incisa 'Crispa'	Culleaf Stephanandra	20					20	18" H/Cont.	
VC	Viburnum carlesii 'Compactum'	Compact Korean Spice Viburnum	1					1	2' H/Cont.	
VDC	Viburnum dentatum 'Christom'	Blue Muffin Viburnum	9					9	3' H/Cont. or B&B	
<b>Evergreen Shrubs</b>										
BG	Buxus 'Green Mound'	Green Mound Boxwood	9					9	18" H/Cont.	
CHP	Chamaecyparis pisifera 'Golden Mop'	Golden Mop False Cypress	1					1	12-15" H/Cont	
JP	Juniperus procumbens 'Nana'	Dwarf Japanese Garden Juniper	8					8	18" Spd/Cont.	
MD	Microbiota decussata	Russian Arborvitae	5					5	18" Spd./Cont.	
RGL	Rhododendron 'Golden Lights'	Golden Lights Rhododendron	3					3	#5 - 18" H/Cont	
RNS	Rhododendron 'Northern Starburst'	Northern Starburst Rhododendron	6					6	#5 - 18" H/Cont	
TMT	Taxus x media 'Tauntonii'	Taunton Yew	41					41	18" Spd/Cont.	
TOS	Thuja occidentalis 'Smargard'	Emerald Arborvitae	12					12	4' H/B&B	
<b>Perennials</b>										
als	Allium tanguticum 'Summer Beauty'	Summer Beauty Ornamental Onion					19	19	1 Qt. pot	
ac	Anemone canadensis	Snowdrop Anemone			22			22	1 Qt. pot	
asc	Asarum canadense	Wild Ginger			120			120	2" Plug	
acs	Astilbe chinensis 'Superba'	Fall Astilbe			20			20	1 Qt. pot	
aab	Astilbe x arendsii 'Bridal Veil'	False Spirea			28	20		48	1 Qt. pot	
aap	Astilbe x arendsii 'Peach Blossom'	False Spirea			20	15		35	1 Qt. pot	
ass	Astilbe x simplicifolia 'Sprite'	Star Astilbe			5			5	1 Qt. pot	
af	Athyrium filix-femina	Lady Fern				14	14	28	1 Qt. pot	
bc	Bergenia cordata 'Baby Doll'	Baby Doll Bergenia					25	25	1 Qt. pot	
bm	Brunnera macrophylla	Siberian Bugloss			18			18	1 Qt. pot	
cf	Carex flacca	Blue-green Sedge			30	9	10	49	1 Qt. pot	
cp	Ceratostigma plumbaginoides	Leadwort			29			29	1 Qt. pot	
clh	Chelone lyonii 'Hot Lips'	Turtlehead				7		7	1 Qt. pot	
cr	Cimicifuga racemosa	Bugbane				10		10	1 Qt. pot	
crb	Cimicifuga racemosa 'Brunette'	Brunette Bugbane				7	5	12	1 Qt. pot	
ct	Clematis temiflora	Sweet Autumn Clematis					1	1	1 Qt. pot	
cm	Convallaria majalis	Lily-of-the-Valley					200	200	1 Qt. pot	
dcg	Deschampsia caespitosa 'Goldschleier'	Gold Veil Tufted Hair Grass			31			31	1 Qt. pot	
dk	Dicentra x 'King of Hearts'	Hybrid Bleeding Heart			25			25	1 Qt. pot	
dg	Digitalis grandiflora	Yellow Foxglove			28			28	1 Qt. pot	
egl	Epimedium grandiflorum 'Lilafée'	Longspur Barrenwort				42		42	1 Qt. pot	
efm	Euonymus fortunei 'Minimus'	Dwarf Wintercreeper			6			6	24" H/B&B	
hma	Hakonechloa macro 'All Gold'	Variiegated Hakone Grass				27		27	1 Qt. pot	
hl	Hellebores 'Red Lady'	Red Lady Lenten Rose				5		5	1 Qt. pot	
hw	Hellebores 'White Lady Spotted'	White Lady Spotted Lenten Rose				10		10	1 Qt. pot	
hhy	Hemerocallis 'Hyperion'	Hyperion Daylily			15	17		32	1 Qt. pot	
hsb	Heuchera sanguinea 'Bessingham Hybrid'	Bessingham Hybrid Coralbells					40	40	1 Qt. pot	
hsp	Heuchera sanguinea 'Palace Purple'	Palace Purple Coralbells				17	16	33	1 Qt. pot	
hbg	Hosta 'Bilby Green'	Bilby Green Hosta				5		5	1 Qt. pot	
hbm	Hosta 'Blue Mammoth'	Blue Mammoth Hosta				2	2	4	1 Qt. pot	
hf	Hosta 'Frances Williams'	Frances Williams Hosta				5		5	1 Qt. pot	
hse	Hosta sieboldiana 'Elegans'	Elegans Hosta			11	3	2	16	1 Qt. pot	
hov	Hosta ventricosa	Blue Plantain Lily			20			20	1 Qt. pot	
hw	Hosta 'Wide Brim'	Wide Brim Hosta			13			13	1 Qt. pot	
ic	Iris siberica 'Caesar's Brother'	Caesar's Brother Iris			9			9	1 Qt. pot	
msp	Miscanthus sinensis 'Purpureus'	Maidenhair Grass					9	9	1 Qt. pot	
pl	Pachysandra terminalis	Pachysandra			210	50		260	2" Plug	
pa	Pennisetum alpecuroides 'Moudy'	Fountain Grass					4	4	1 Qt. pot	
pr	Pulmonaria x 'Raspberry Splash'	Raspberry Splash Lungwort			3	11		14	1 Qt. pot	
sem	Sedum 'Matrona'	Matrona Sedum					9	9	1 Qt. pot	
ss	Spodiopogon sibiricus	Silver Spike Grass					0	0	1 Qt. pot	
vs	Veronica spicata 'Sunny Border Blue'	Sunny Border Blue Veronica				39	36	75	1 Qt. pot	

DATE OF ISSUE: 12/29/06  
ADDENDUM 2

REVISIONS:  
1-4-07 Addendum 3  
6-27-07 Addendum X

PROJECT # 03034

DETAILS AND  
PLANT LIST

L2.3

**DIMENSION IV  
MADISON**

Architecture  
Engineering  
Interior Design

313 West Beltline Hwy., Suite 161  
Madison, WI 53713  
Phone (608) 229-4444 Fax (608) 229-4445

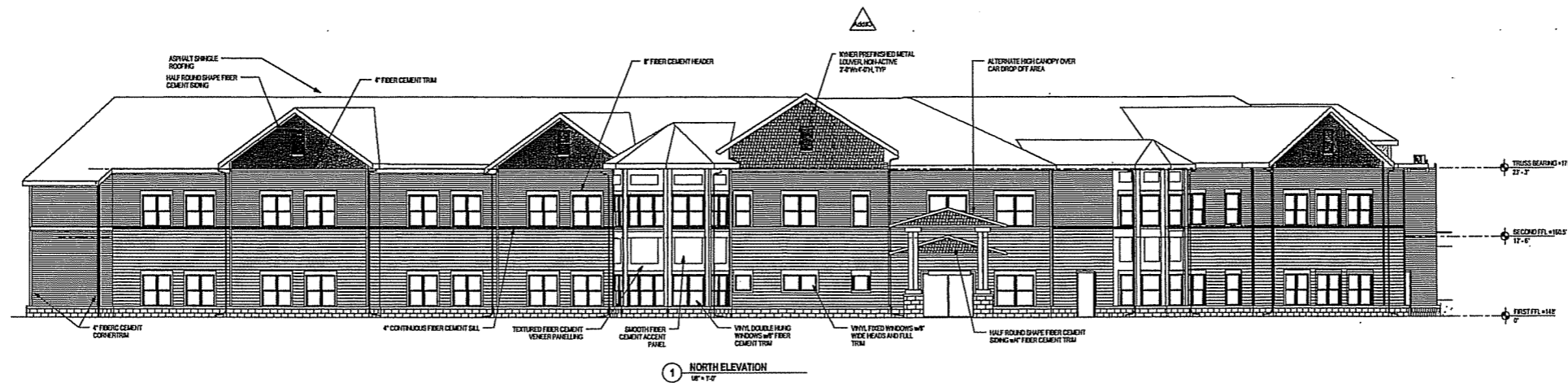
CONSULTANTS:

**VOGEL  
BROS. BUILDING CO.**

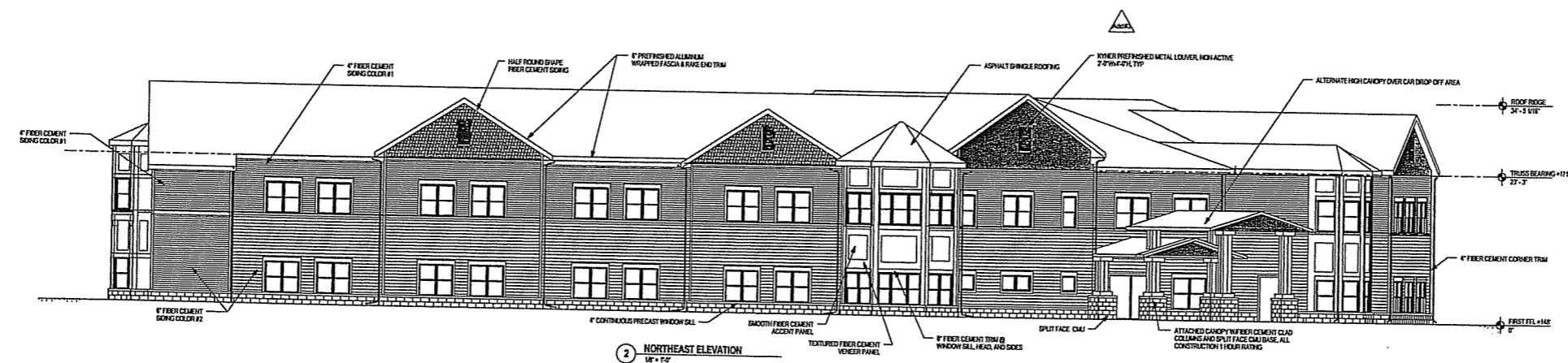
We build with values,  
solutions and accountability.

SKILLED NURSING  
OAKWOOD VILLAGE  
EAST CAMPUS

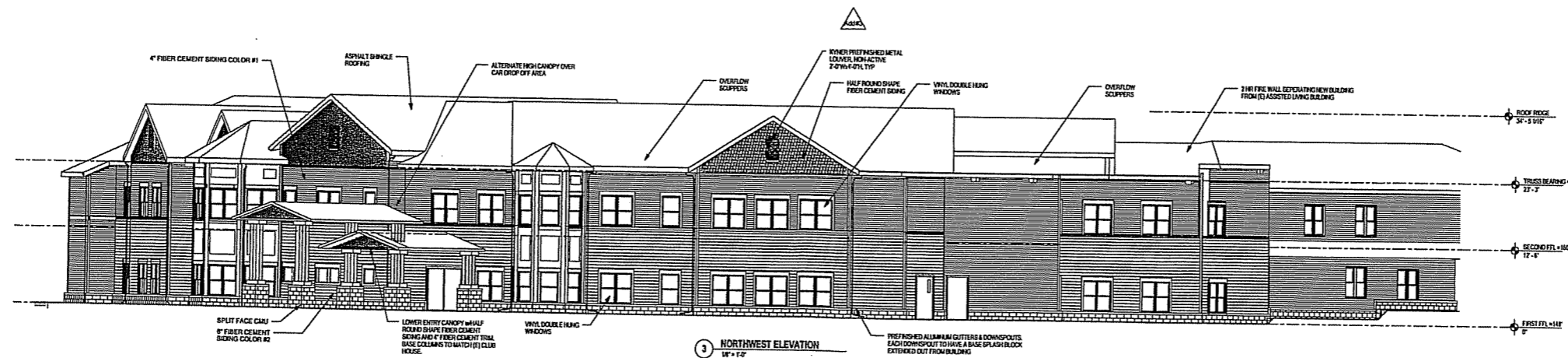
5833 AMERICAN PARKWAY  
MADISON, WI 53718-8325



1 NORTH ELEVATION  
1/8\"/>



2 NORTHEAST ELEVATION  
1/8\"/>



3 NORTHWEST ELEVATION  
1/8\"/>

**GENERAL NOTE:**  
1. SEE REVISED ROOF PLAN FOR  
DOWNSPOUT LOCATIONS

DATE OF ISSUE:	12-29-06
REVISIONS:	
ADDENDUM #3	1-04-07

PROJECT # 03034

EXTERIOR  
ELEVATIONS

**A2.0**