



OLD MARKET ROW

THE CONTINENTAL APARTMENTS

E WASHINGTON AVE

S BLAIR ST

SITE

S FRANKLIN ST

E MAIN ST

S HANCOCK ST



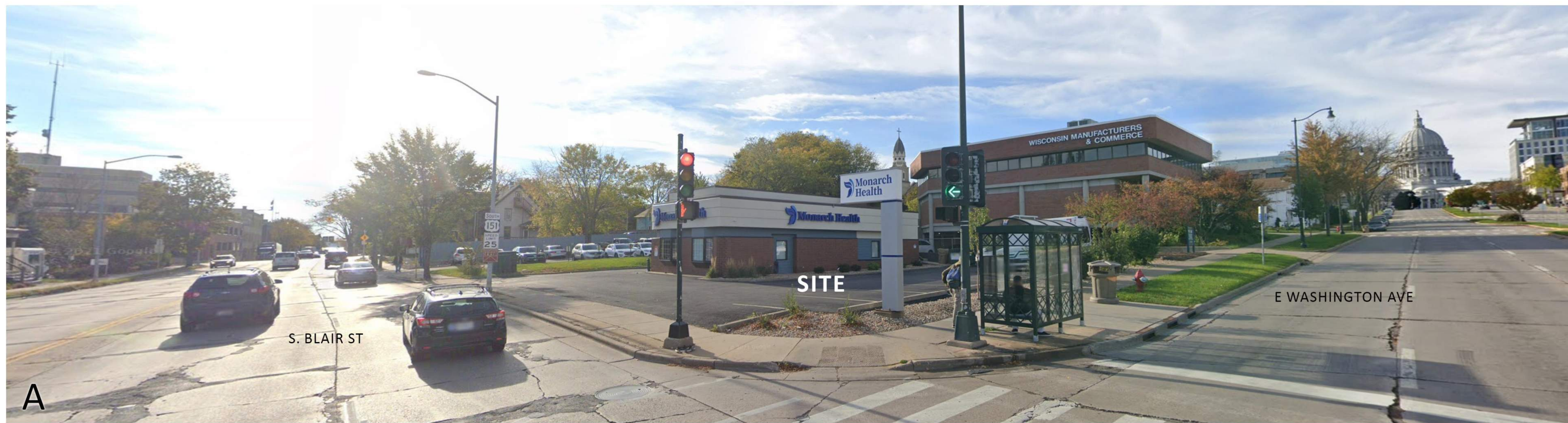
# SITE LOCATOR MAP

REDEVELOPMENT  
521 E. WASHINGTON AVE., MADISON

UDC INFO SUBMITTAL | 04.22.2024 | #2379







A



B



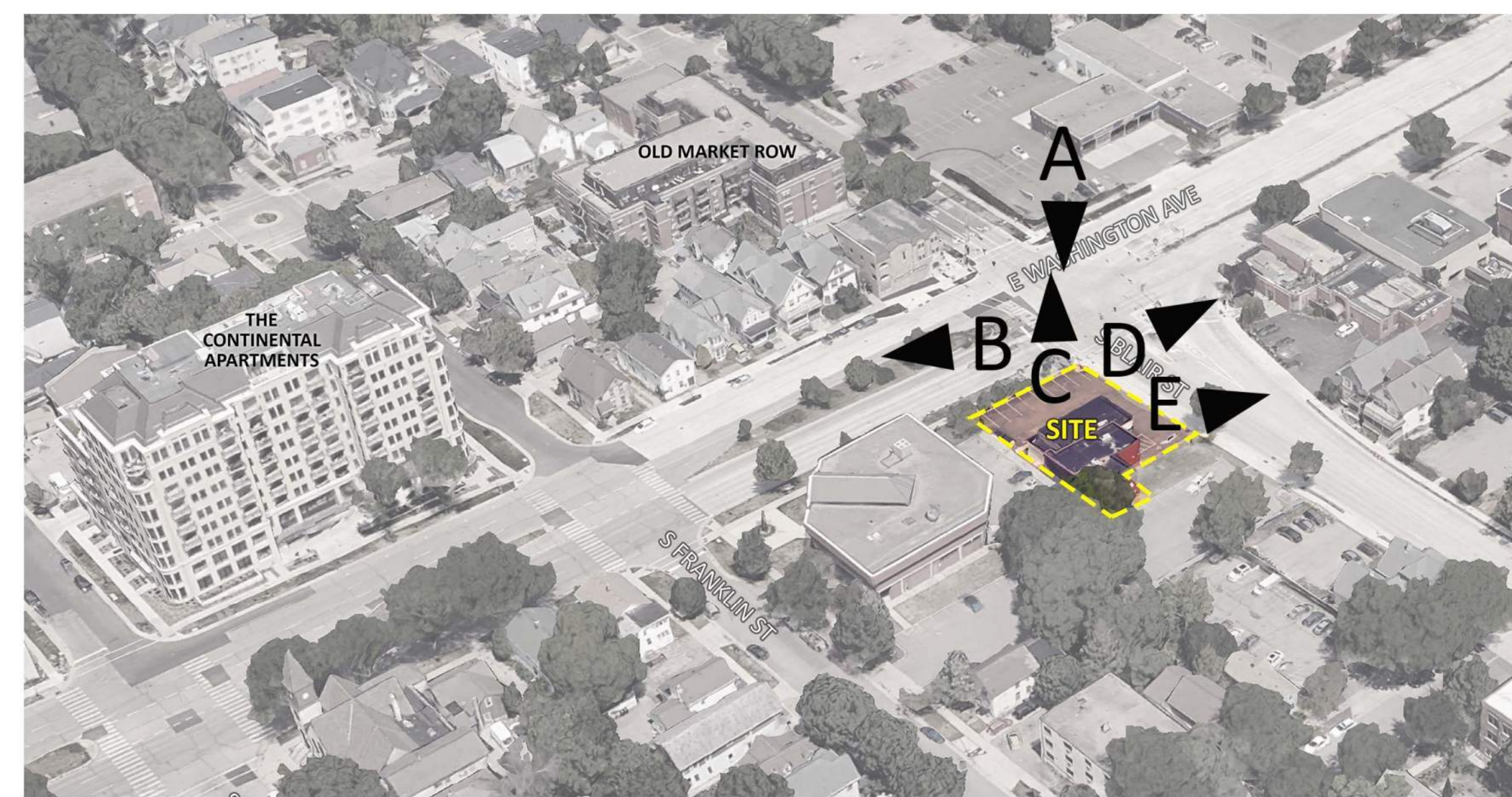
C



D

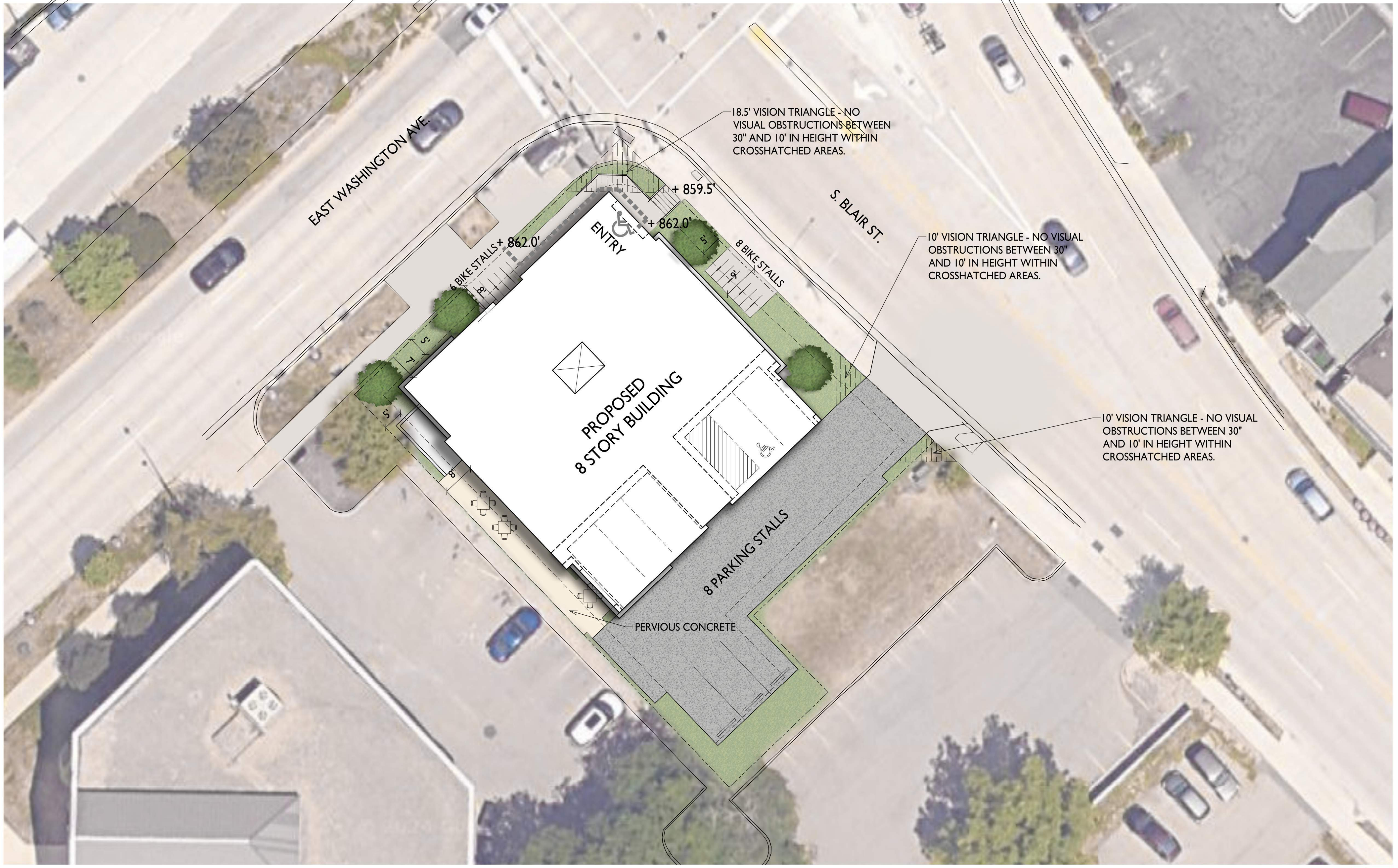


E



SITE MAP

CONTEXT IMAGES



EAST WASHINGTON AVE.

S. BLAIR ST.

18.5' VISION TRIANGLE - NO VISUAL OBSTRUCTIONS BETWEEN 30" AND 10' IN HEIGHT WITHIN CROSSHATCHED AREAS.

10' VISION TRIANGLE - NO VISUAL OBSTRUCTIONS BETWEEN 30" AND 10' IN HEIGHT WITHIN CROSSHATCHED AREAS.

10' VISION TRIANGLE - NO VISUAL OBSTRUCTIONS BETWEEN 30" AND 10' IN HEIGHT WITHIN CROSSHATCHED AREAS.

PROPOSED 8 STORY BUILDING

ENTRY

6 BIKE STALLS + 862.0'

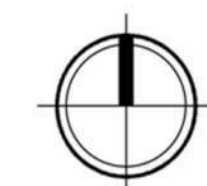
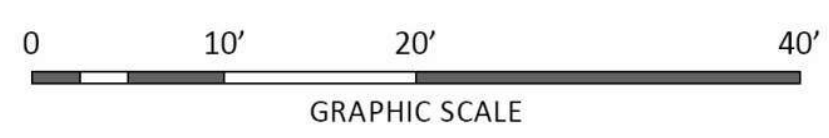
8 BIKE STALLS

8 PARKING STALLS

PERVIOUS CONCRETE

+ 859.5'

+ 862.0'

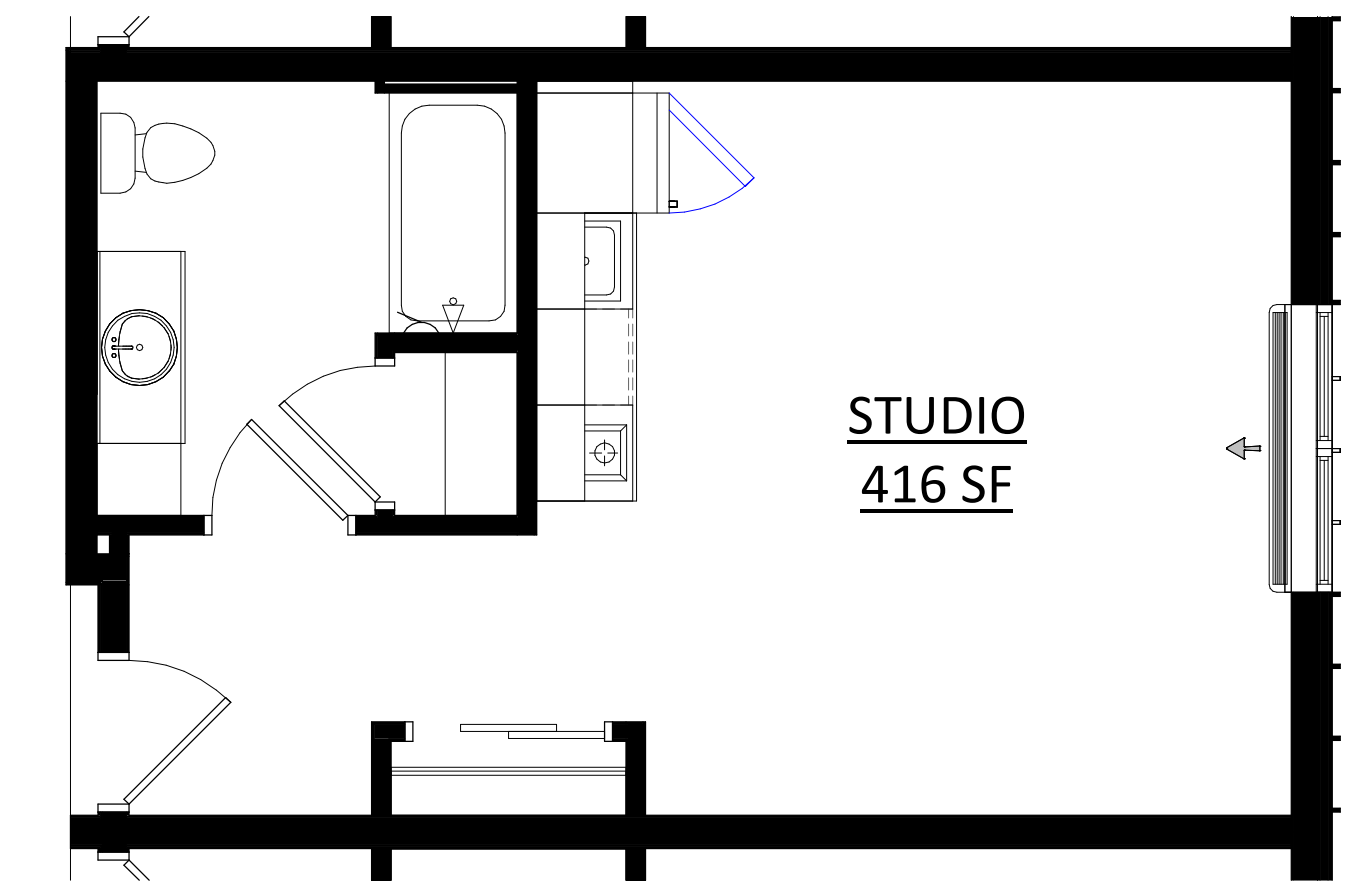


CONCEPTUAL SITE PLAN

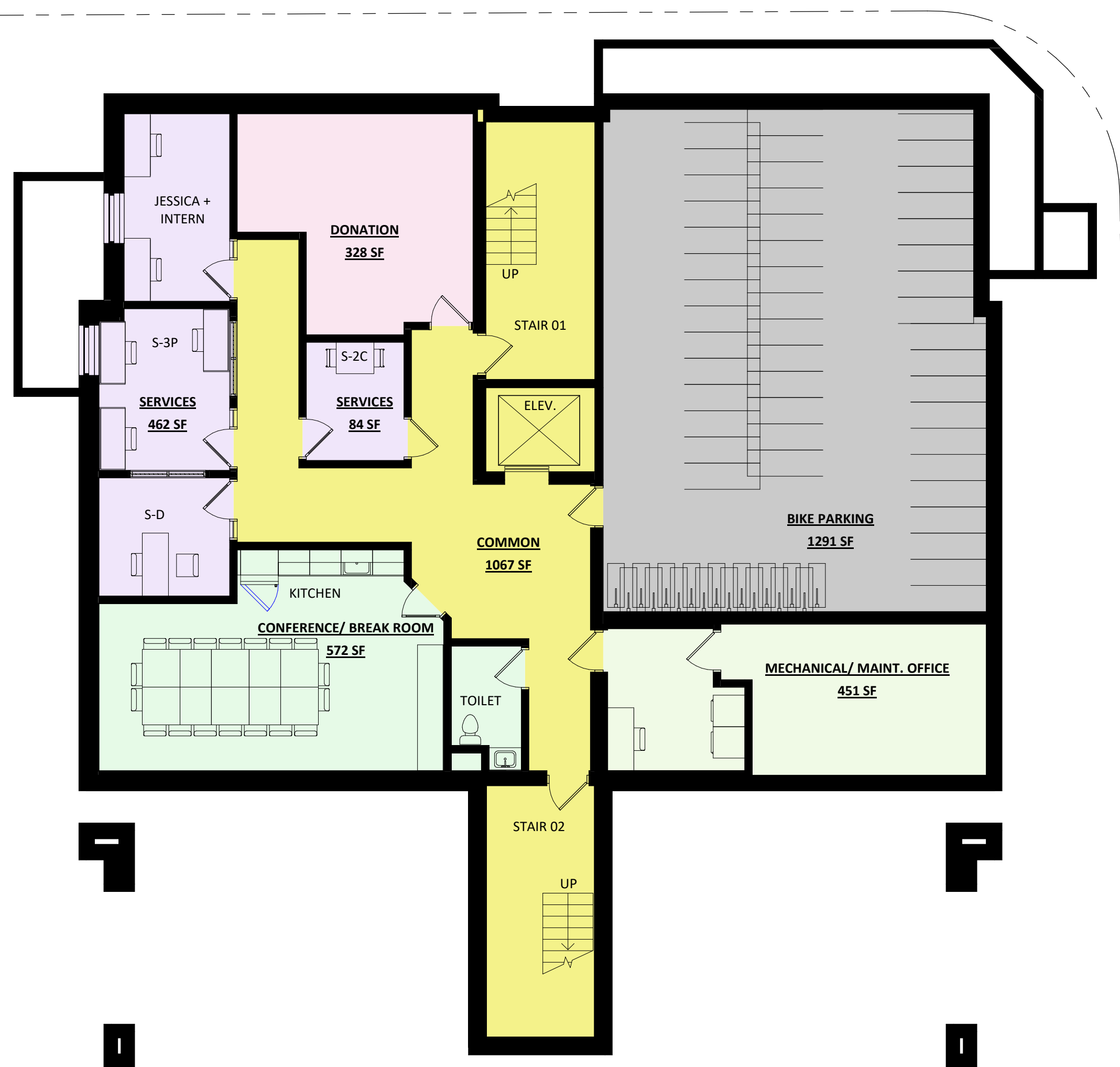
REDEVELOPMENT  
521 E. WASHINGTON AVE., MADISON

UDC INFO SUBMITTAL | 04.22.2024 | #2379





TYPICAL UNIT



BASEMENT

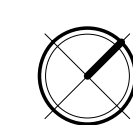
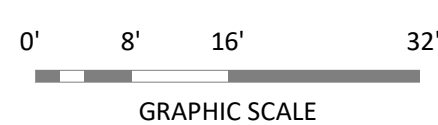


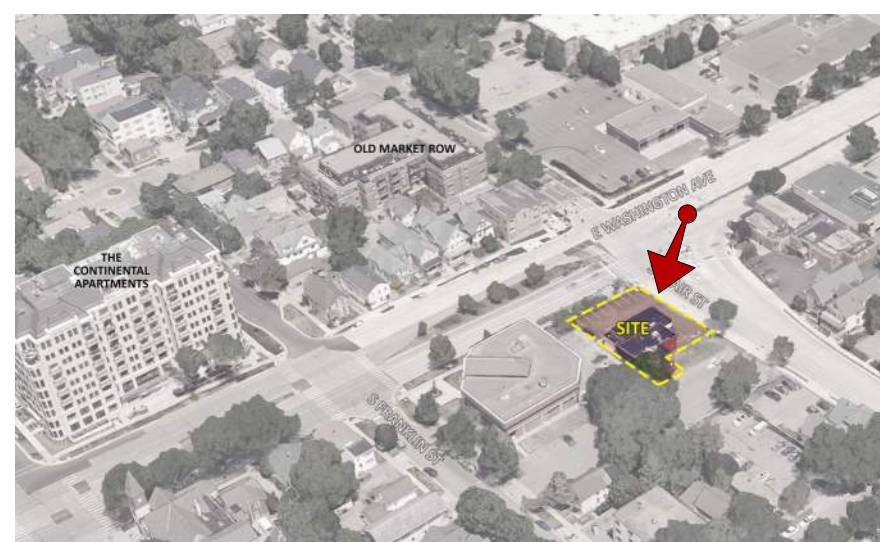
FIRST FLOOR



SECOND-EIGHTH FLOOR

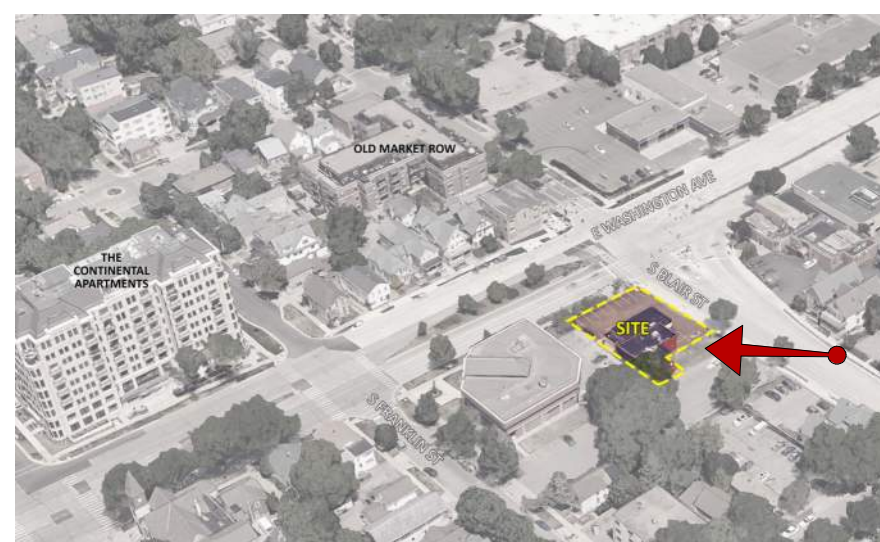
CONCEPTUAL FLOOR PLANS





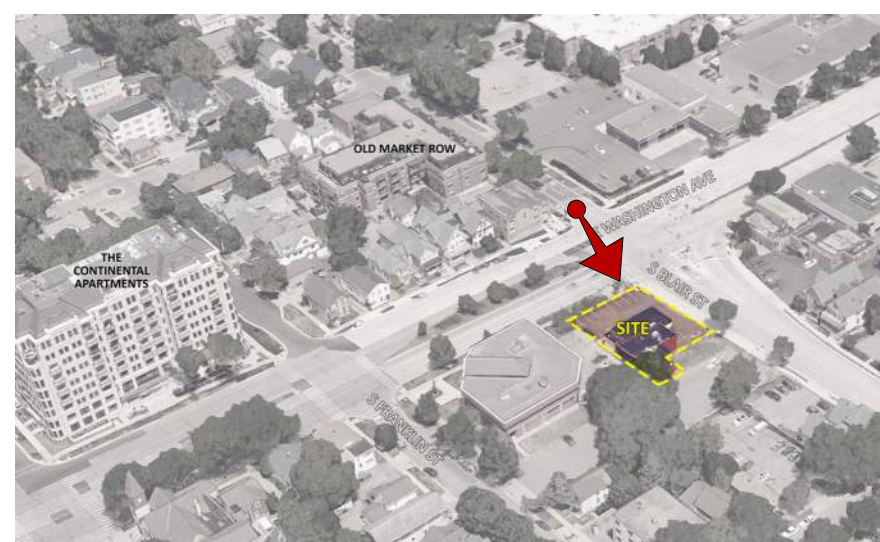
VIEW FROM STREET INTERSECTION





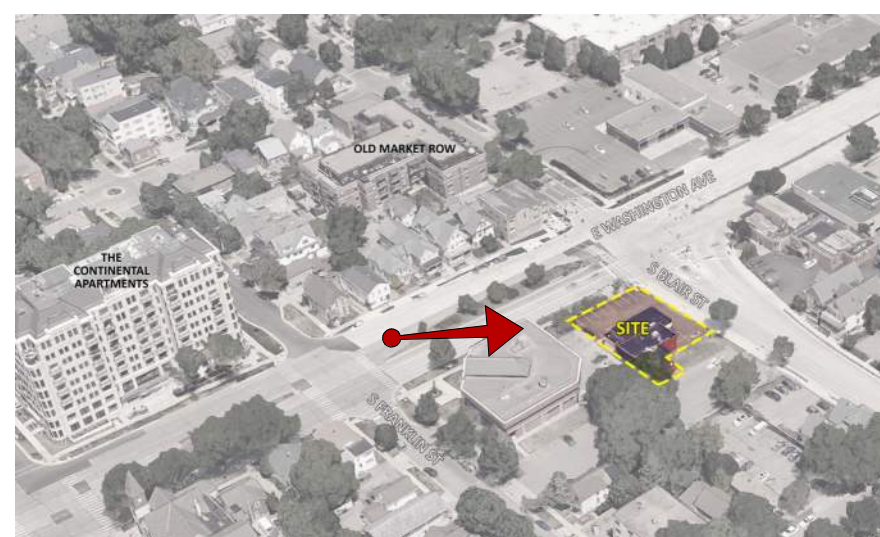
VIEW FROM S. BLAIR STREET



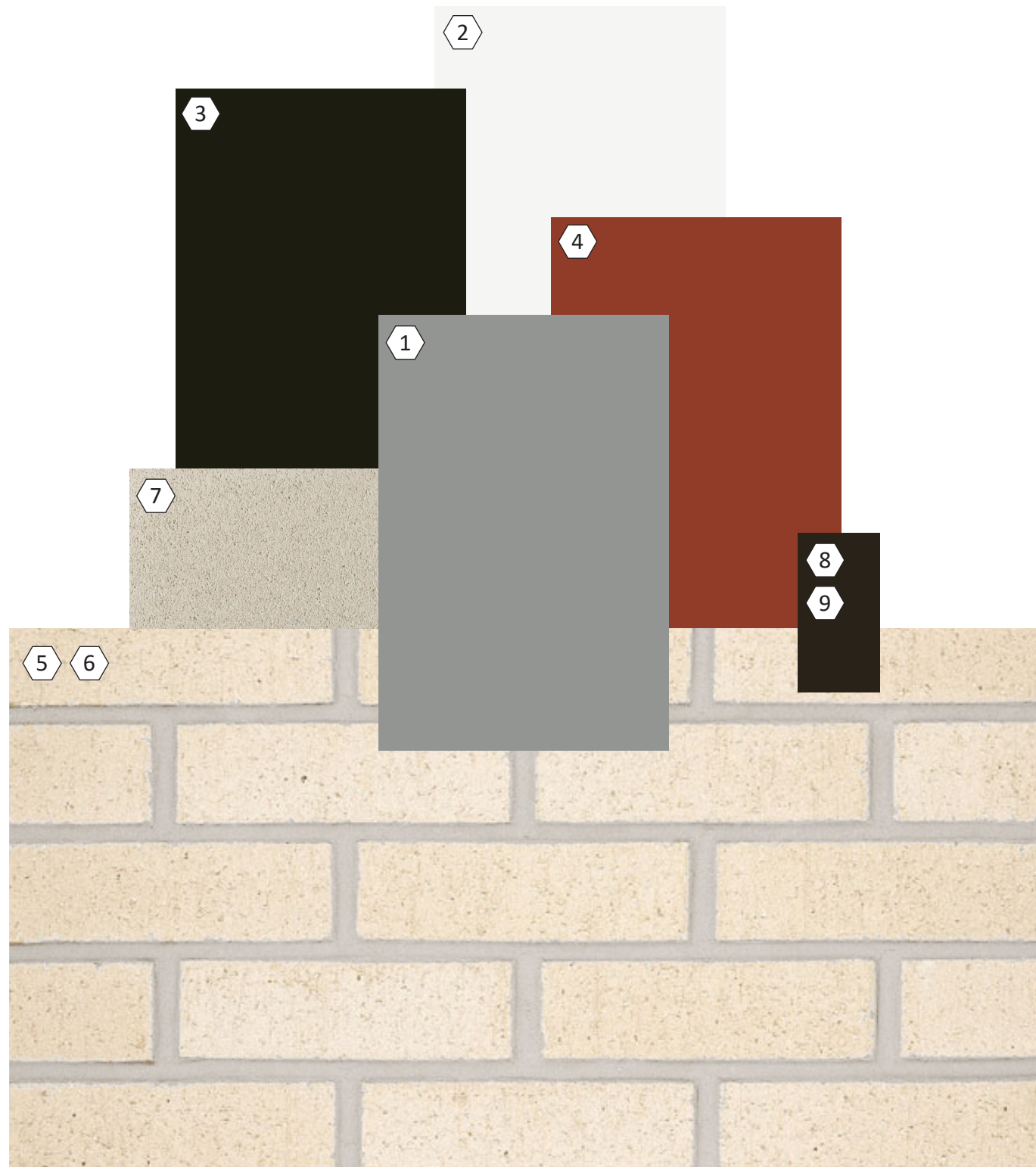


VIEW FROM STREET INTERSECTION





VIEW FROM E. WASHINGTON AVENUE



VIEW FROM INTERSECTION ALONG E. WASHINGTON AVE.

EXTERIOR MATERIAL SCHEDULE			
MARK	BUILDING ELEMENT	MANUFACTURER	COLOR
1	MCM HORIZONTAL REVEAL PANEL	PAC-CLAD	SLATE GRAY
2	MCM PANEL	TBD	BONE WHITE
3	STANDING SEAM VERTICAL SIDING	PAC-CLAD	MIDNIGHT-BRONZE
4	MCM PANEL	PAC-CLAD	COLONIAL RED
5	BRICK VENEER	SUMMIT BRICK	THISTLEDOWN
6	BRICK VENEER - SOLDIER COURSE	SUMMIT BRICK	THISTLEDOWN
7	CAST STONE BANDS & SILLS	ROCKCAST	RIESLING
8	COMPOSITE WINDOWS	TBD	DARK BRONZE
9	ALUM. STOREFRONT	TBD	DARK BRONZE

\*PLEASE NOTE THAT COLOR MAY DIFFER SLIGHTLY FROM HOW IT APPEARS ON YOUR SCREEN DUE TO VARYING MONITOR SETTINGS.

## MATERIAL BOARD

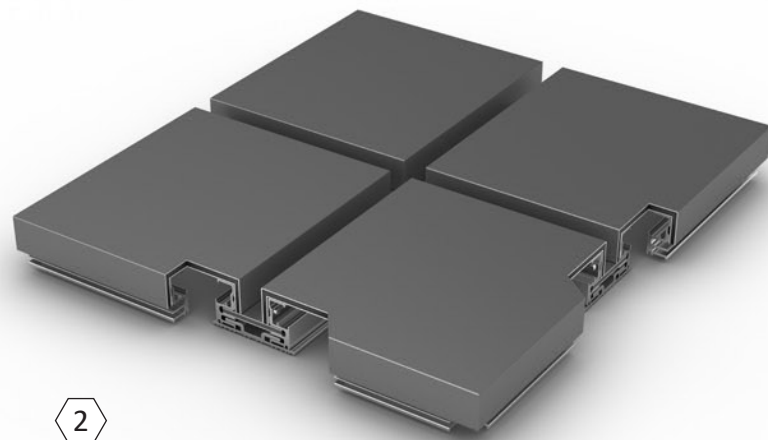
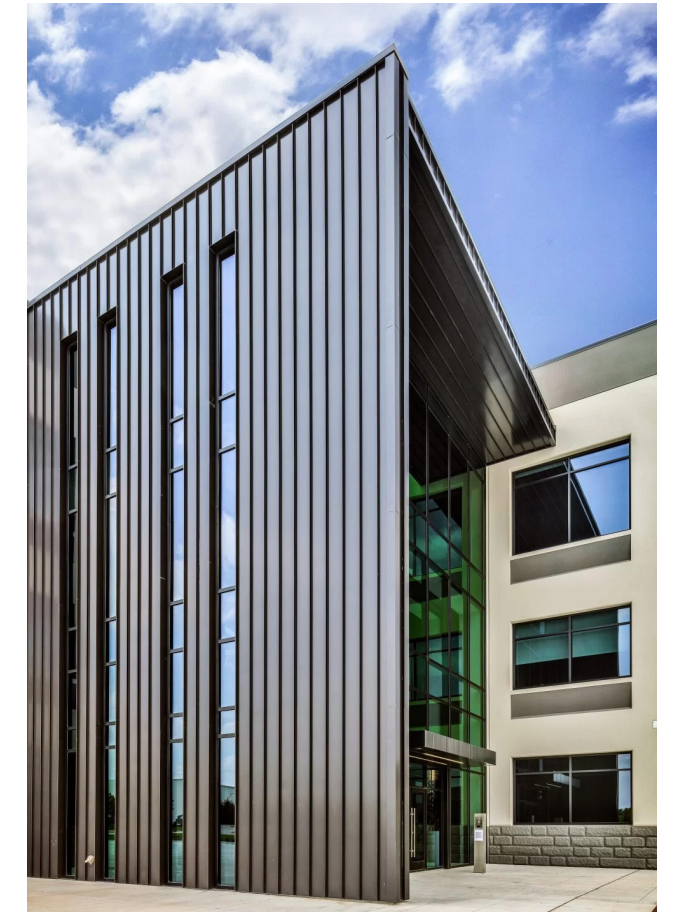
REDEVELOPMENT  
521 E. WASHINGTON AVE., MADISON

UDC INFO SUBMITTAL | 04.22.2024 | #2379



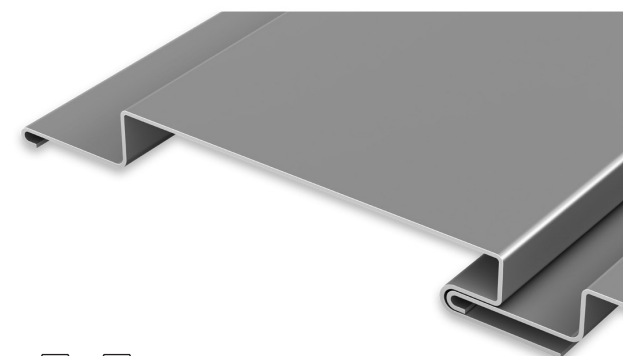


WINDOW LOUVER EXAMPLES



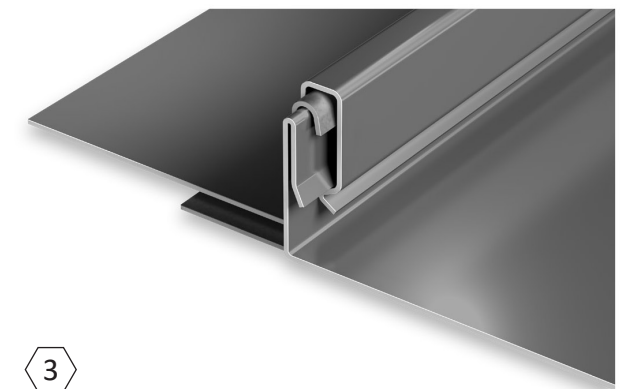
2

\*COMPOSITE PANEL



4 1

\*HORIZONTAL REVEAL PANEL



3

\*STANDING SEAM VERTICAL SIDING

\*PROFILE ONLY, NOT COLOR

## PROFILES & WINDOW LOUVERS