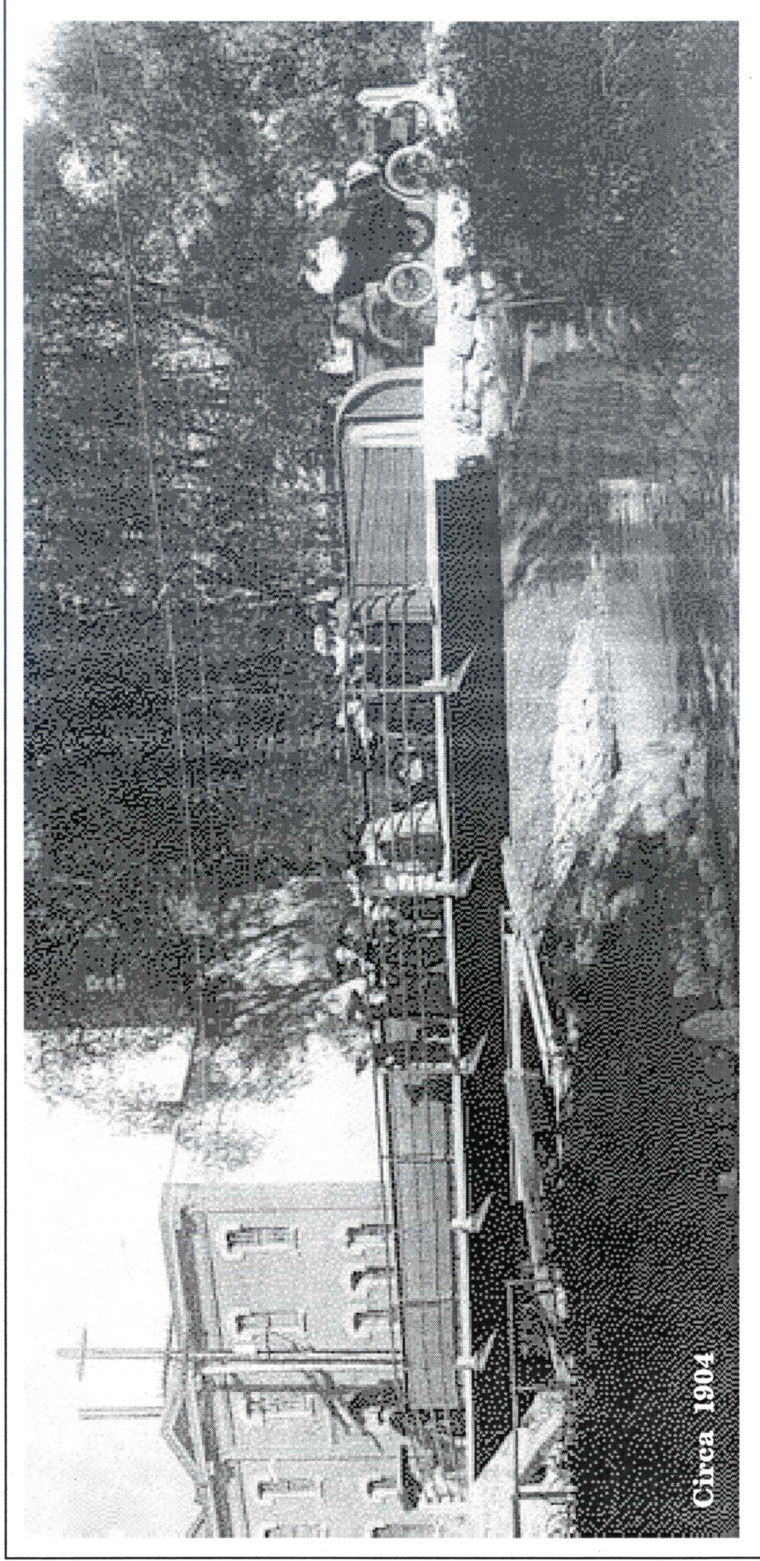


Sherman Avenue Crossing



The original Sherman Avenue crossing over the Yahara River was a wooden bridge built by Leonard Farwell around ~~1841~~¹⁸⁴⁸ and replaced in 1874.

By 1904 the crossing consisted of a bridge constructed of steel beams, plates, and rivets with a wooden plank deck. There are four similar bridges over the Yahara River in use today, all of which were initially constructed as railroad bridges.

The steel bridge was replaced in 1934 by a steel bridge with a concrete arch facade. The beams, deck, and railings were replaced in 2003 with concrete beams, facade, and railing that matched the original 1934 construction.

07358