

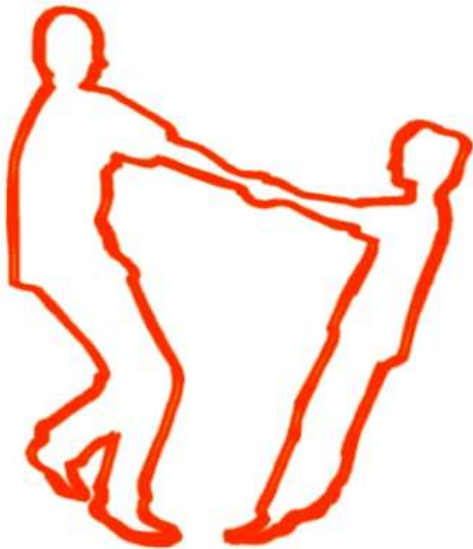
One-Two-Three Go!

A public art proposal for Cypress Spray Park

By Melanie Kehoss

In conjunction with Medalist LaserFab, LLC

October 2007



Summary:

A gem of Madison's South Side, Cypress Spray Park contributes a colorful and friendly atmosphere to the Burr Oaks Neighborhood. I propose to add to this atmosphere by transforming the fence around the grounds into a canvas for something fun and attractive. My project, *1-2-3-Go!*, will provide Cypress Spray Park and the Burr Oaks Neighborhood with a unique visual experience for local residents, while commenting pictorially on the park as a gathering space for children and families.

My artwork will be welded to the wire fence around the park. It features silhouetted images of families at play, in three sets of three. Each set will depict two people playing, and each section of fence will depict a stage of the game. The people's interactions will be whimsical, yet realistic, and involve children and adults.

Medalist Laserfab LLC will provide the materials and technology for this project. Laserfab supplies light-weight, weatherproof, durable aluminum, and will laser-cut the metal to my exact design. We will use .035" aluminum, which will be painted orange to make the figures stand out from the fence, and to match the playground equipment.

My contact at Laserfab, Mark Liccione, and I are very excited to work with city and community to achieve our vision. Our project will beautifully and playfully reflect South Madison and the Burr Oaks Neighborhood.



The Images:

The silhouettes, with their lack of detail, facial expression, and overt emotion, allow visitors to project their own emotions and memories onto the images, regardless of race, era, or socio-economic background. Thus, the artwork reflects the diversity of the Burr Oaks Neighborhood, and will remain valid independent of changing fashion and demographics.

Kid Cape



Located on the East side of the dry area of the park, this sequence depicts a boy and girl running, one in front of the other. The apparently younger boy catches up with the girl enough to grab hold of her shoulders. He appears in the last frame, holding onto her like a human

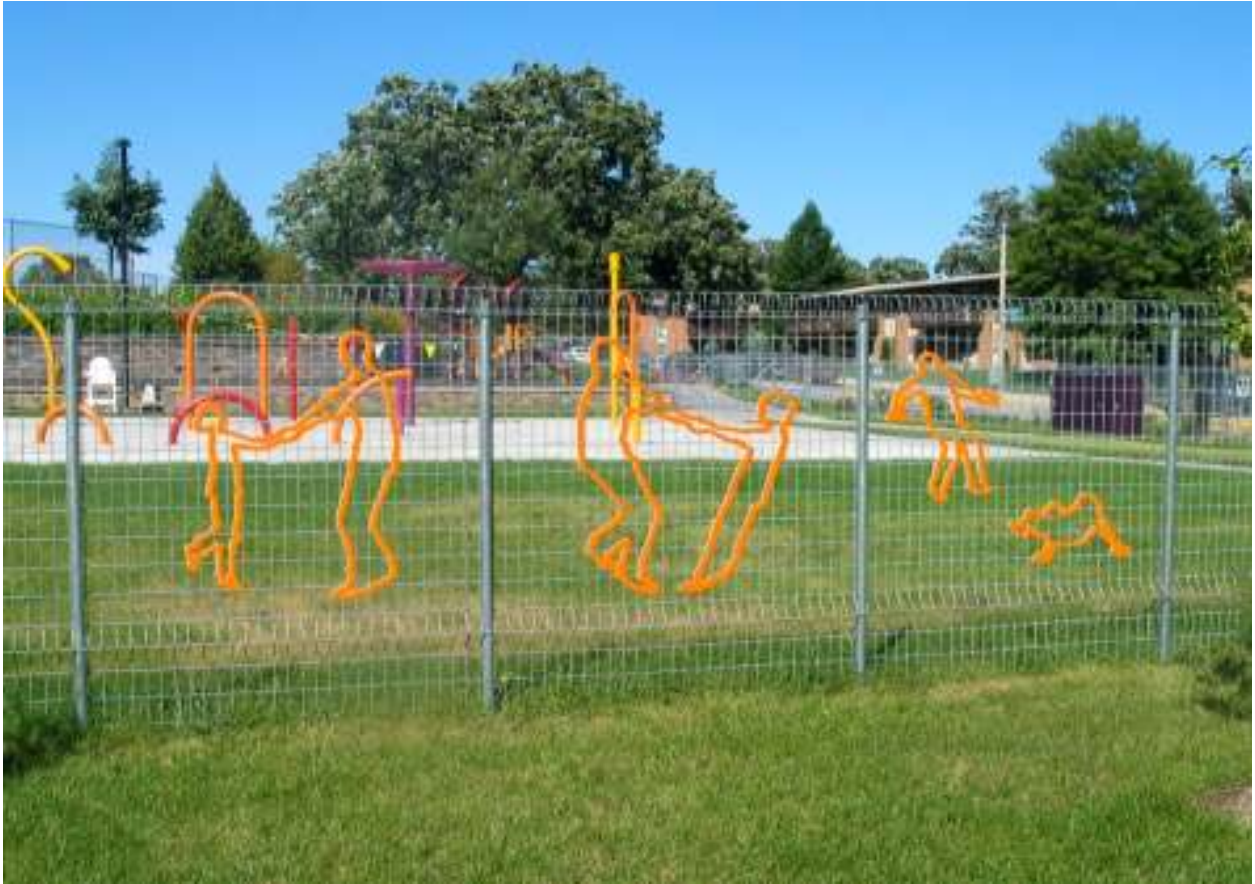
super-hero cape. A simple race turns into a fantastical symbiotic relationship between two siblings or friends.

Sooo Big



Between the wet area gate and the bike rack, this set of images depicts a father figure throwing a child into the air. Once safely on the ground, however, the boy seems to throw the adult into the air. It is up to the viewer to judge whether the man is pretending to be tossed, or whether the child has actually lifted him. The sequence is a comic reversal of roles, hinting at the desire and potential of every child to do what his parents can do.

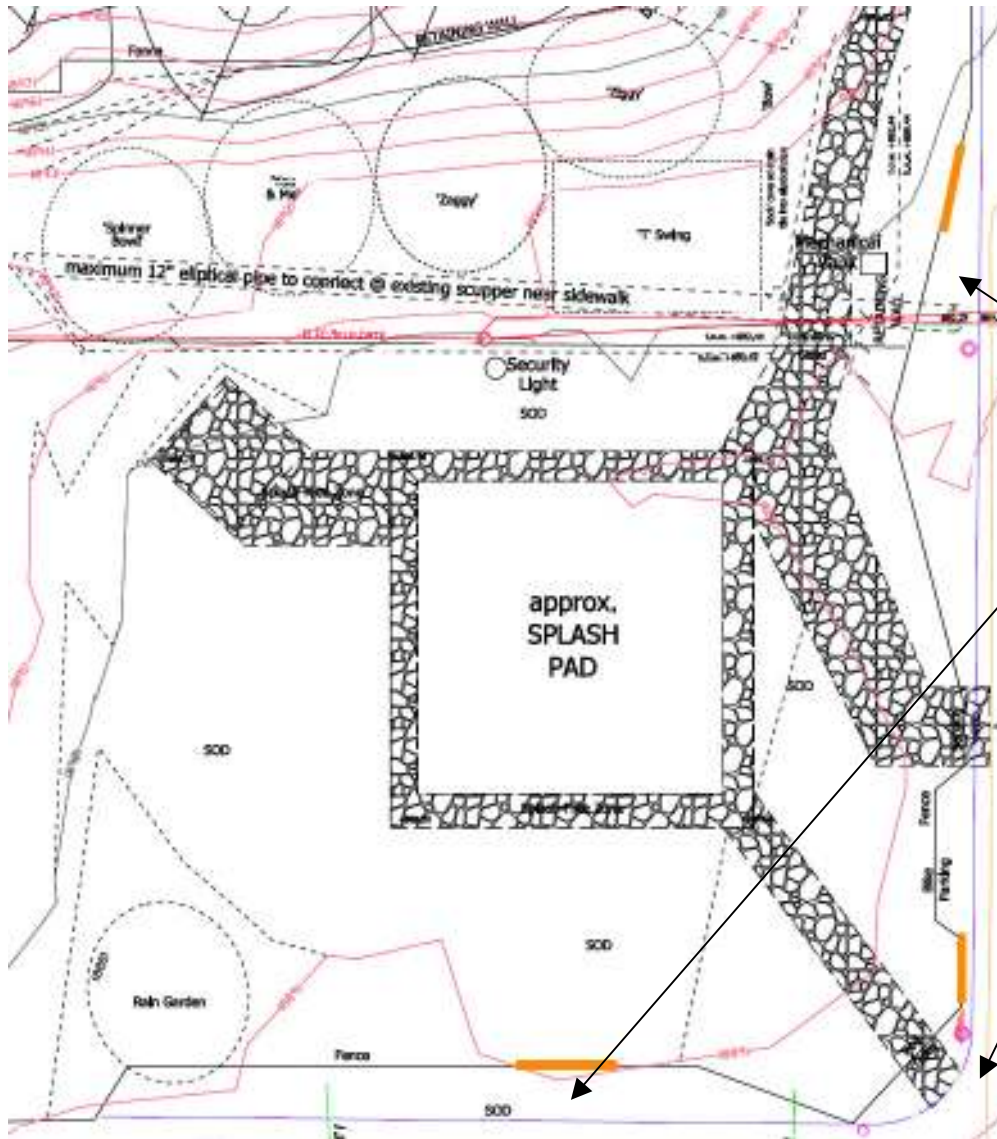
Round We Go



On the South side of the wet area, these three sections of fence contain images of an adult and child spinning together until they let go and stagger backwards. This common game of dizzying euphoria is a symbol of the balance of love and trust (imagine any cheesy love montage). Even when it appears that the heavier adult is in control, both are equally affected by the release.

Together, these three scenarios demonstrate the joy of youth and the ability of children and adults to share in that joy. Themes of growth, cooperation, family interaction, and vitality reflect the goals and community spirit of the Burr Oaks Neighborhood.

Placement:



Kid Cape

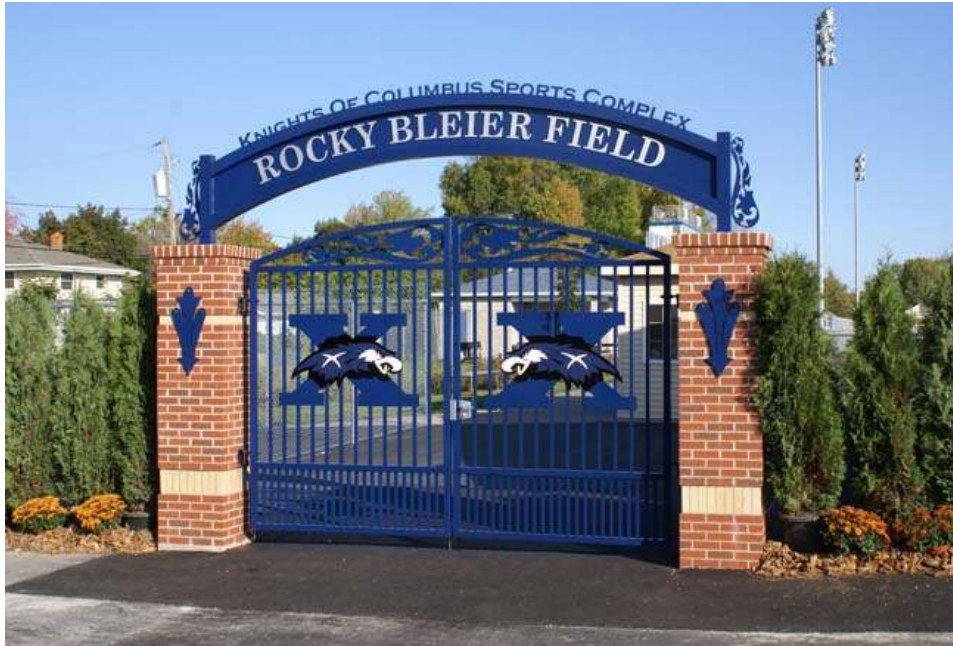
Round We Go

Sooo Big



Other Projects:

Rocky Bleier Field, Gate 23



Medalist LaserFab designed and manufactured this gate at Appleton's Xavier High School. The stadium was dedicated to Xavier's own Rocky Bleier on October 13, 2007.

Two Conversations

I completed this foam-on-Plexiglas piece by hand in 2005. Although the figures in *1-2-3 Go!* will not have this much facial detail, the scale and detail in the outlines will be comparable.



Safety:

1-2-3-Go! conforms to the Handbook for Safety Guidelines of Public Playgrounds, published by the Consumer Product Safety Commission. The following issues apply and have been addressed.

1. **Visibility:** Because the insides of the figures are cut out to create only an outline, the artwork will not limit visibility in any way, either into or out of the park.
2. **Smoothness:** The thickness of the spray painted aluminum results in soft, safe edges. They will resemble the rounded lip of a soda can. All of the corners will be rounded off to a safe radius. Because the artwork will be welded flush with the fence, no metal will protrude from the surface.
3. **Durability:** This light-weight aluminum is guaranteed to remain fixed to the fence with a tack weld. The strength of the material and its irregular shape, meanwhile, will prevent any warping due to miss-use or weathering. Additionally, painted aluminum will not rust, and we will use lifetime guaranteed paint.
4. **Security:** The thinness of the metal (.035") and the fact that it will be welded flush with the fence will not accommodate climbing.
5. **Tangibility:** The painted surface will protect people from burns due to touching sun-lit metal. The paint will be lead-free.



Beauty:

Never forgetting the “Art” component of Public Art, I have taken a number of aesthetic issues into consideration in this design:

1. **Placement:** The placement of the artwork would not visually interfere with any nearby landscaping or other man-made elements. The cut-outs will add color and interest to otherwise visually sparse areas of the park. Each piece will be installed on the street side of the fence, where it will be seen by the most people.
2. **Materials:** Aluminum coated with Sherwin William’s Duration® paint will stand up to the most fierce weather of Wisconsin, so the artwork will look just as good decades from now as it will after installation. Because of the light weight of aluminum, tiny (3/8” diameter) tack welds will securely hold the artwork to the fence, making the art look great from the back, as well.
3. **Color:** The artwork will match the bright orange that appears in the playground equipment, much like the utility box (purple) and the bike racks (red). This brilliant color will make the artwork seem to jump out from the silver of the fence and green of the grass.
4. **Outlines:** The overlap of the bright outlines, silver fence, and all that lies behind them will create a dynamic visual effect, like a subtle moiré pattern. Furthermore, thin outlines are less likely graffiti targets than flat, solid surfaces.
5. **Scale:** The pairs of figures will perfectly fit the sections of fence in which they are installed, large enough to be seen well, but not so large as to appear cramped between poles.



Budget:

Aluminum, laser-cutting, inscription, and shipping	\$3000
Paint and painting supplies	\$150
Air compressor use and labor	\$250
Transport to park	\$20
Welding	\$1000
Design, organization, and oversight	\$4000
Total	\$8420

Timeline:

April 1, 2008	Kehoss sends designs to Laserfab
April 2-16	Laserfab transfers designs to computer templates and runs laser production
April 17	Laserfab delivers cut-outs to Kehoss
April 18-26	Kehoss spray-paints cut-outs
April 28-May 2	Kehoss and state-certified Laserfab welder install cut-outs at Cypress Spray Park



