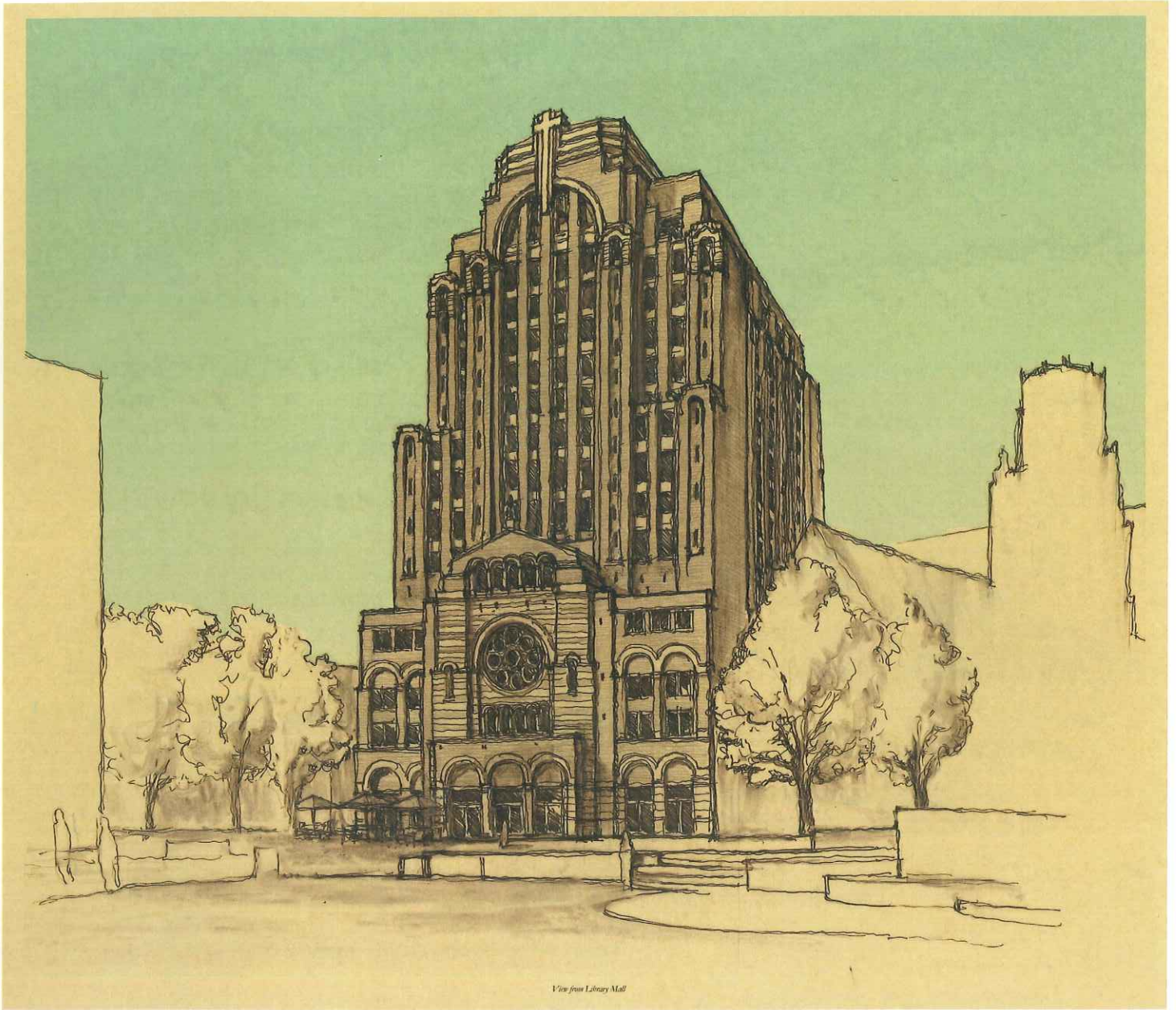


An Informational Presentation
To The City of Madison Landmarks Commission
November 8, 2010



View from Library Mall

St. Paul Catholic Center and Residential College

BWZ

October 25, 2010

Attn: Amy Scanlon
Secretary of the Landmarks Commission
Department of Planning and Community & Economic Development
City of Madison
215 Martin Luther King Jr. Blvd.
Madison, WI 53701

Re: St. Paul Catholic Center and Residential College
723 State Street, Madison, WI 53706

Dear Amy Scanlon,

On behalf of St. Paul's University Catholic Center, we submit a request for review of an informational presentation to the Landmarks Commission at the Commission's meeting on November 8, 2010. We have included twelve copies of rendered plans, elevations, and perspectives for the Commission's consideration. A description of the general purpose and intent of the project follows.

St. Paul Catholic Center and Residential College

St. Paul's University Catholic Center, a major presence at the University of Wisconsin-Madison for more than 100 years, plans to build a modern residential college facility on the UW campus. The proposed St. Paul Catholic Center and Residential College will enable St. Paul's to better serve the university and campus community.

- The new facility will employ a "residential college" concept, blending residential, faith, community and academic aspects of the university experience.
- The proposed facility is 14 stories tall. Features, based on feedback from students and the community, include:
 - A 400-to-600-seat multilevel chapel incorporating reclaimed elements of original 1909 chapel
 - A student center with private study space, small- and large-group gathering space, music rooms and offices
 - Office space, including conference and work rooms
 - Residential rooms and two- and three-bedroom apartments for UW students
 - Dining hall
 - Residential space for priests and visiting scholars
- Residential space can accommodate 175 people and will be open to all students, regardless of faith, who wish to live in a community that focuses on the premise of integrating faith and intellectual development.

- Cost of the new facility is estimated at \$45 million and is expected to come from a small group of benefactors who have long supported projects like this. Groundbreaking is anticipated in the next two to three years.

St. Paul's Ministry

- St. Paul's is the birthplace of the campus Catholic ministry in the United States. UW's Catholic campus ministry was formed in 1883, and graduates who were part of this group started the "Newman Movement," designed to serve Catholics on college campuses. St. Paul's Chapel was built in 1909, the first Catholic chapel built specifically to serve students at a public university. The chapel and student center were renovated in 1967, with a contemporary concrete expression.
- Student involvement in St. Paul's has grown significantly over the past 10 years and is way beyond the ability of the existing facility to meet these expanding needs. The current facility, parts of which date back to the late 1800s, is severely outdated, extremely cramped and in need of major upgrades.
- St. Paul's serves thousands of UW students annually. Approximately 1,000 students attend Sunday Mass, and hundreds are actively involved in other St. Paul programs – ranging from small group sessions to national service projects. Additionally, St. Paul's hosts dances, a theater arts program, a speaker series and concerts designed to appeal to all students and community members, extending the university's reach beyond its campus borders.

Architectural Expression

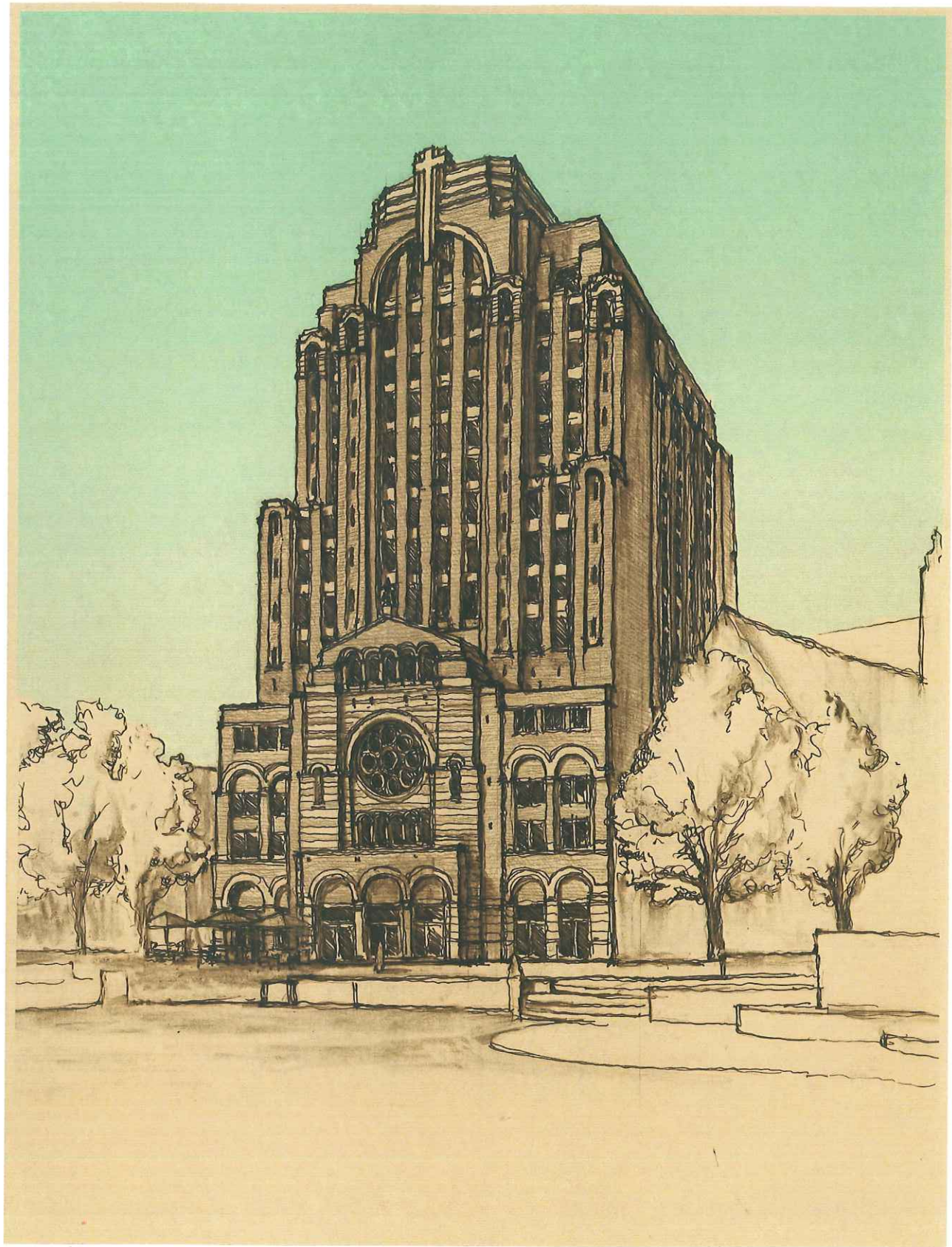
- The proposed building design represents a "new classicism", combining traditional Catholic forms and symbolism with a modern energy. It complements the surrounding university buildings, which mix both traditional and contemporary styles of architecture. The State Street church façade acknowledges the scale and character of the adjacent Pres House while the façade of the Residential College above steps back to maintain the scenic, uninterrupted views between Bascom Hill and the Capitol Square.
- Proposed materials include predominately face brick with natural and cast stone spandrels and trim elements.

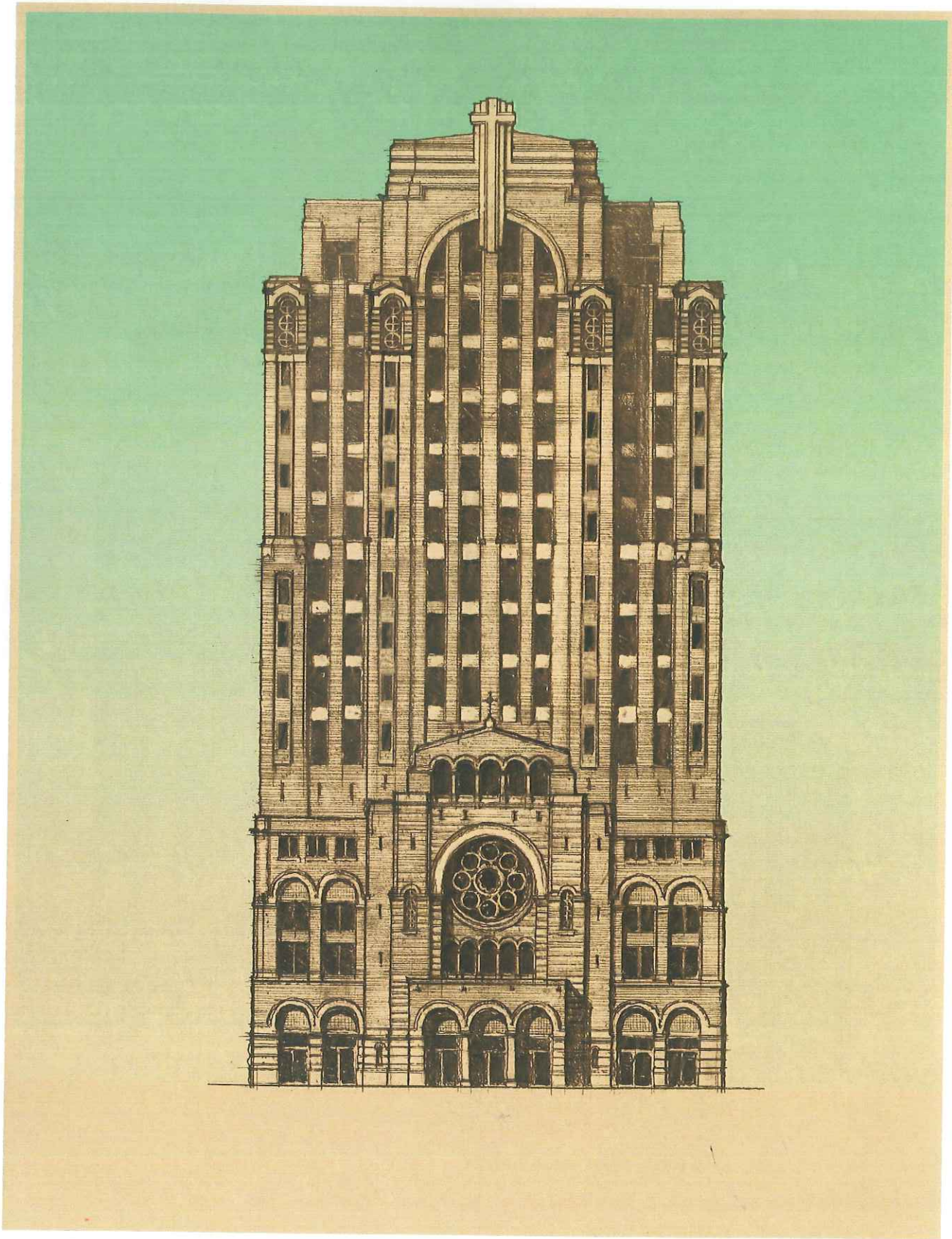
Please call or email with any questions regarding this submittal. We look forward to meeting with you and members of the Commission at the November 8th meeting to present the new St. Paul Catholic Center and Residential College.

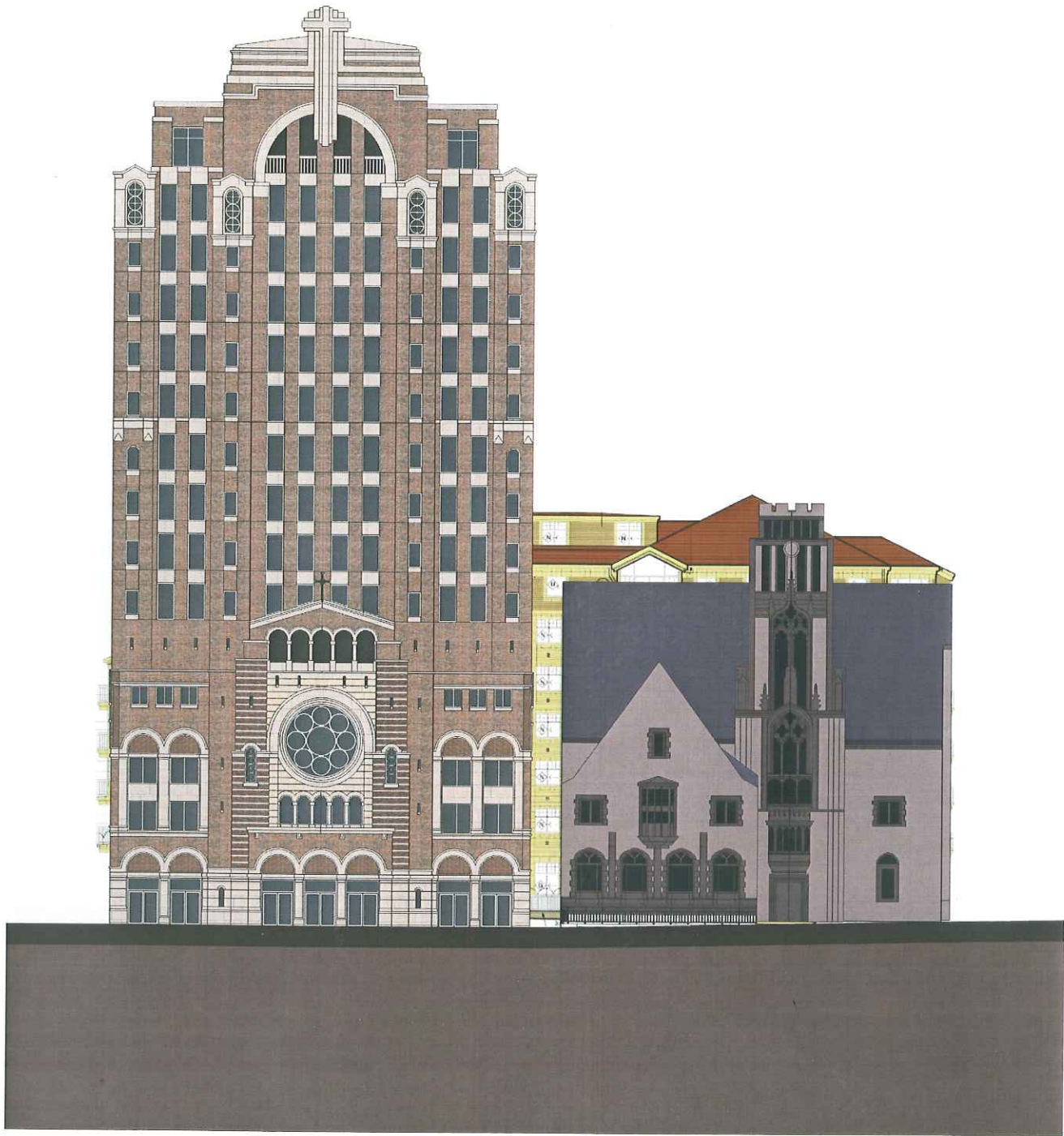
Sincerely,

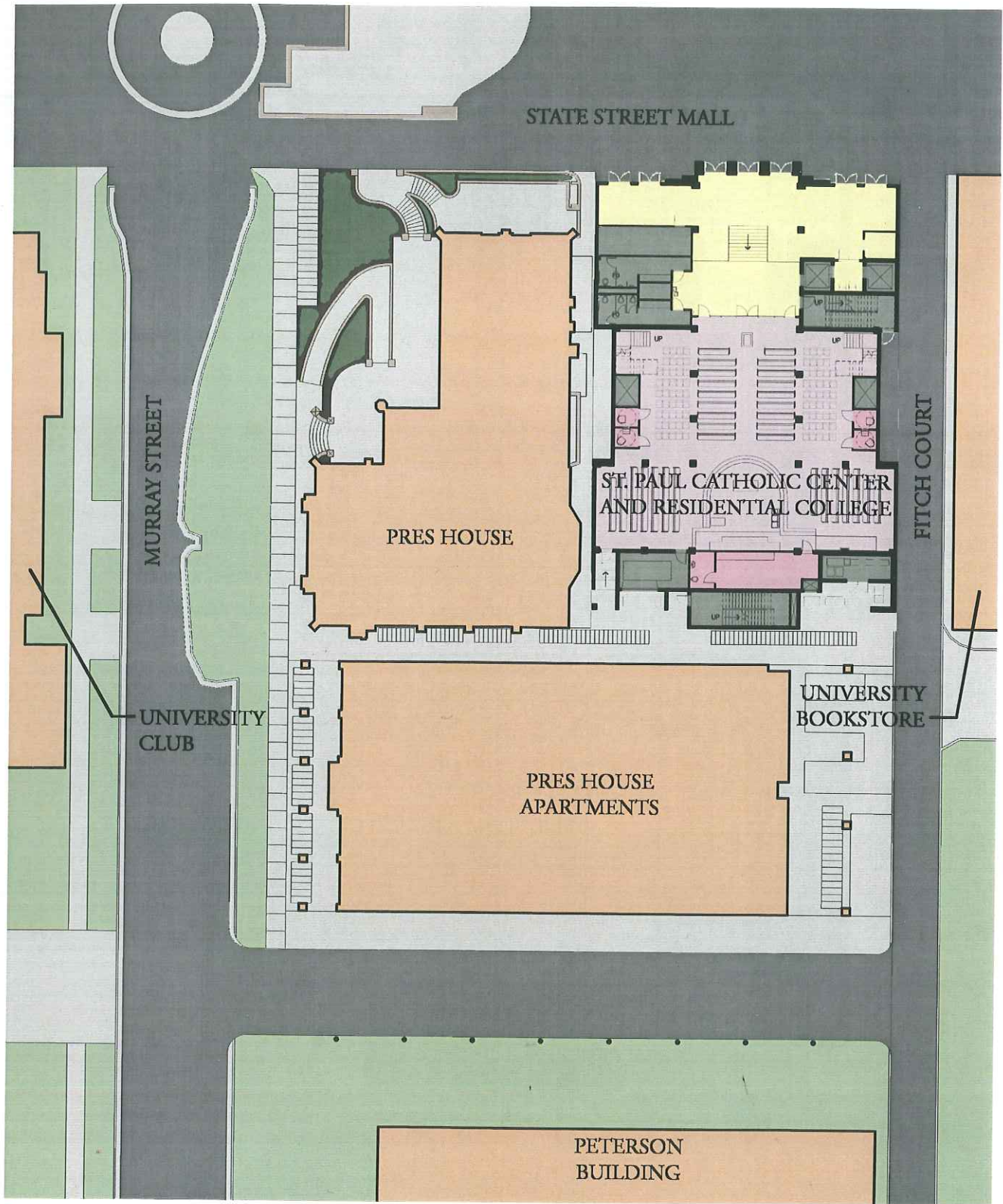


Robert Shipley
BWZ Architects







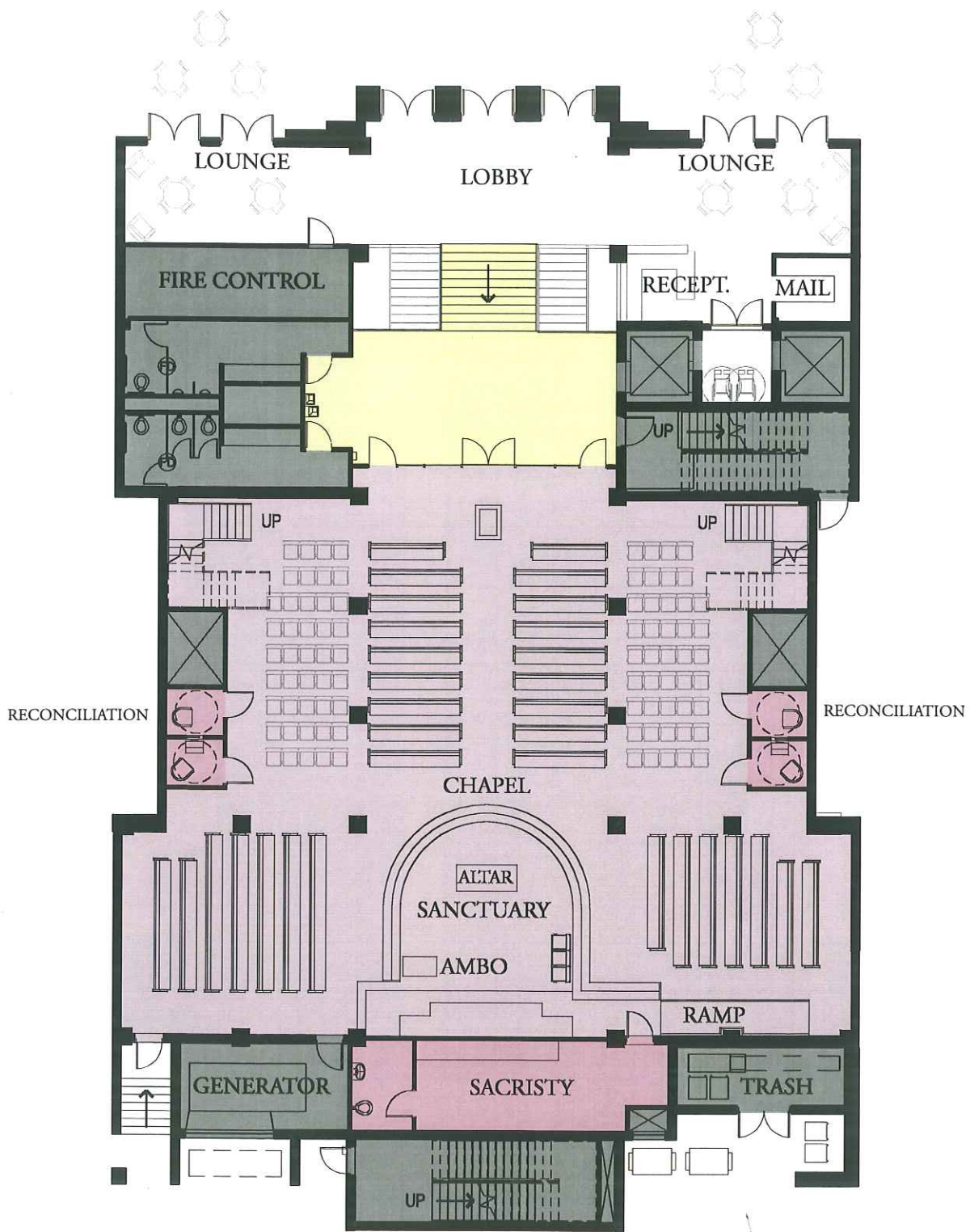


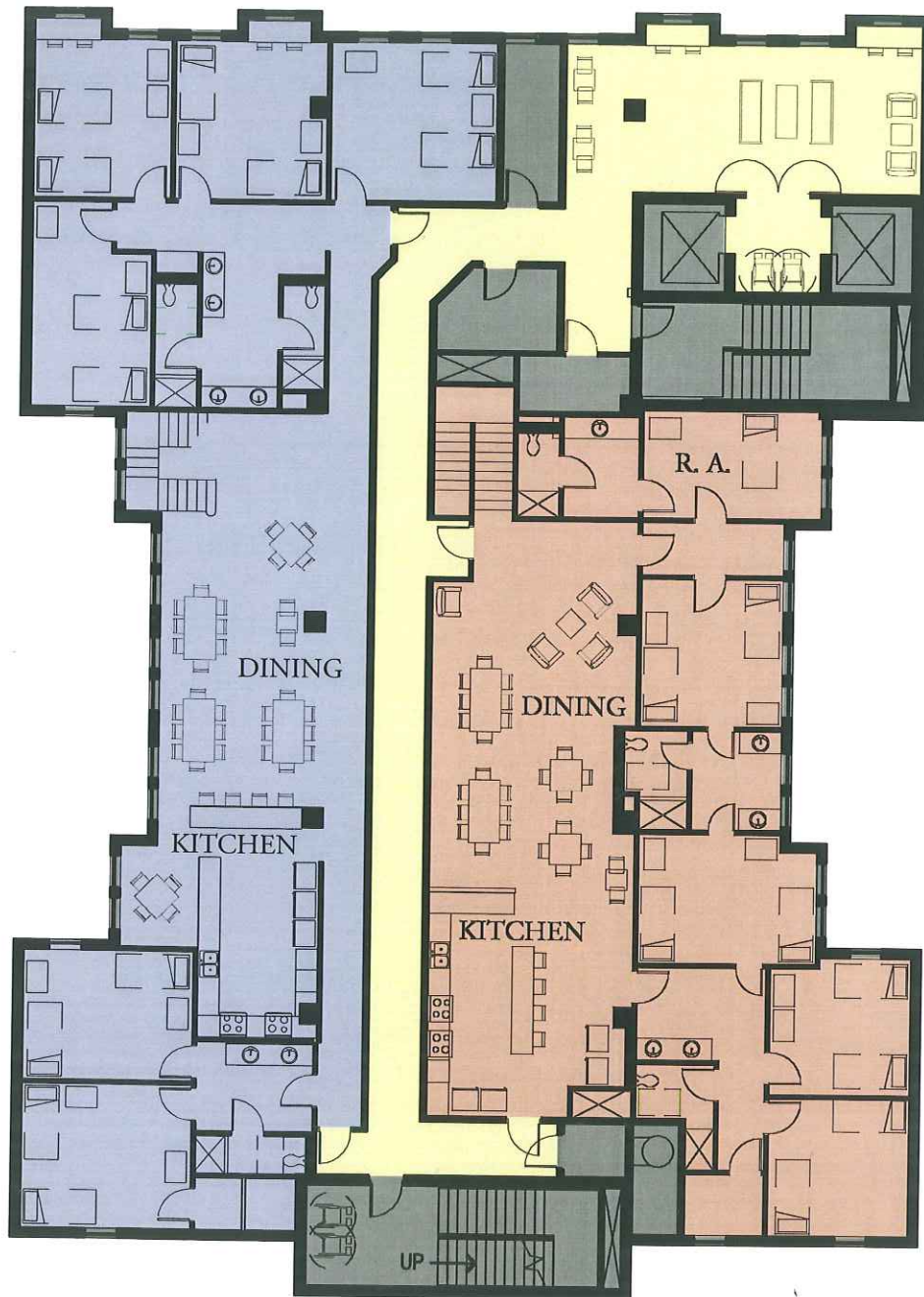
ST. PAUL Catholic Center and Residential College

Site Plan

October 25, 2010







ST. PAUL Catholic Center and Residential College

Level 5 - Communal Living

October 25, 2010

