

Consultant

Notes

Revisions
 Issued For Review - December 11, 2012

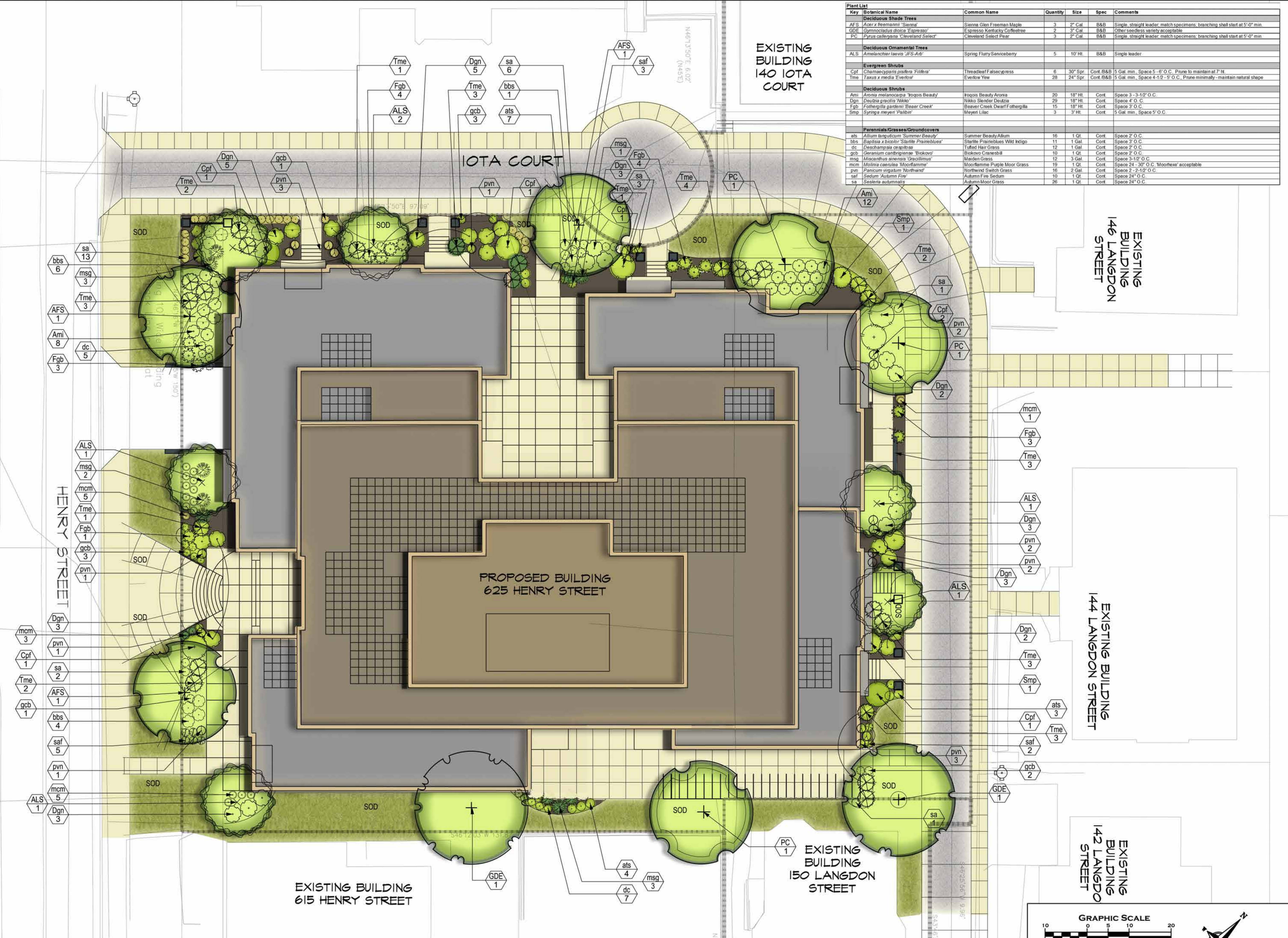
Project Title
 Houden Iota Court

625 N. Henry St.
 Drawing Title
 Landscape Plan

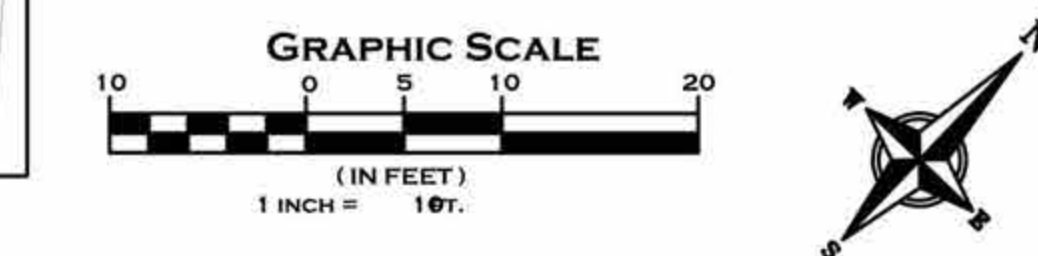
Project No. 0834 Drawing No. L-1.0

This document contains confidential or proprietary information of Knothe & Bruce Architects. Neither the document nor the information herein is to be reproduced, distributed, used, or disclosed, either in whole or in part, except as specifically authorized by Knothe & Bruce Architects. Knothe & Bruce Architects is a Limited Liability Company of Wisconsin.

Key	Botanical Name	Common Name	Quantity	Size	Spec	Comments
Deciduous Shade Trees						
AFS	<i>Acer x freemanii</i> 'Sienna'	Sienna Glen Freeman Maple	3	2" Cal	B&B	Single, straight leader, match specimens, branching shall start at 5'-0" min.
GDE	<i>Gymnocladus dioica</i> 'Espresso'	Espresso Kentucky Coffeetree	2	3" Cal	B&B	Other seedless variety acceptable
PC	<i>Pyrus calleryana</i> 'Cleveland Select'	Cleveland Select Pear	3	2" Cal	B&B	Single, straight leader, match specimens, branching shall start at 5'-0" min.
Deciduous Ornamental Trees						
ALS	<i>Amelanchier laevis</i> 'JFS-Arb'	Spring Flurry Serviceberry	5	10" HT	B&B	Single leader
Evergreen Shrubs						
Cpf	<i>Chamaecyparis nuda</i> 'Futura'	Threadleaf Falsecypress	6	30" Spr	Cont. B&B	5 Gal. min. Space 5'-6" O.C. Prune to maintain at 7' ht.
Tme	<i>Taxus x media</i> 'Everlow'	Everlow Yew	28	24" Spr	Cont. B&B	5 Gal. min. Space 4'-1/2 - 5' O.C. Prune minimally - maintain natural shape
Deciduous Shrubs						
Ami	<i>Aronia melanocarpa</i> 'Inocent Beauty'	Inocent Beauty Aronia	20	18" HT	Cont.	Space 3 - 3-1/2' O.C.
Dgn	<i>Deutzia gracilis</i> 'Nikko'	Nikko Stender Deutzia	29	18" HT	Cont.	Space 4' O.C.
Dgn	<i>Fothergilla gardenii</i> 'Beaver Creek'	Beaver Creek Dwarf Fothergilla	15	18" HT	Cont.	Space 3' O.C.
Smp	<i>Syringa meyeri</i> 'Palmer'	Meyer Lilac	3	3' HT	Cont.	5 Gal. min. Space 5' O.C.
Perennials/Grasses/Groundcovers						
als	<i>Allium tanguticum</i> 'Summer Beauty'	Summer Beauty Allium	16	1 Qt.	Cont.	Space 2' O.C.
bbs	<i>Baptisia x bicolor</i> 'Starfire Pralineblue'	Starfire Pralineblue Wild Indigo	11	1 Gal.	Cont.	Space 2' O.C.
dc	<i>Deschampsia cespitosa</i>	Tufted Hair Grass	12	1 Gal.	Cont.	Space 2' O.C.
gcb	<i>Girardinium carolinense</i> 'Blackwood'	Blackwood Carex	10	1 Qt.	Cont.	Space 2' O.C.
msg	<i>Miscanthus sinensis</i> 'Copeland'	Miscanthus Grass	12	3 Gal.	Cont.	Space 3-1/2' O.C.
mcm	<i>Molinia caerulea</i> 'Moorflamme'	Moorflamme Purple Moor Grass	19	1 Qt.	Cont.	Space 24 - 30" O.C. 'Moorflamme' acceptable
pvn	<i>Panicum virgatum</i> 'Northwind'	Northwind Switch Grass	16	2 Gal.	Cont.	Space 2 - 2-1/2' O.C.
saf	<i>Sedum 'Autumn Fire'</i>	Autumn Fire Sedum	10	1 Qt.	Cont.	Space 24" O.C.
sa	<i>Saxifraga autumnalis</i>	Autumn Moor Grass	26	1 Qt.	Cont.	Space 24" O.C.

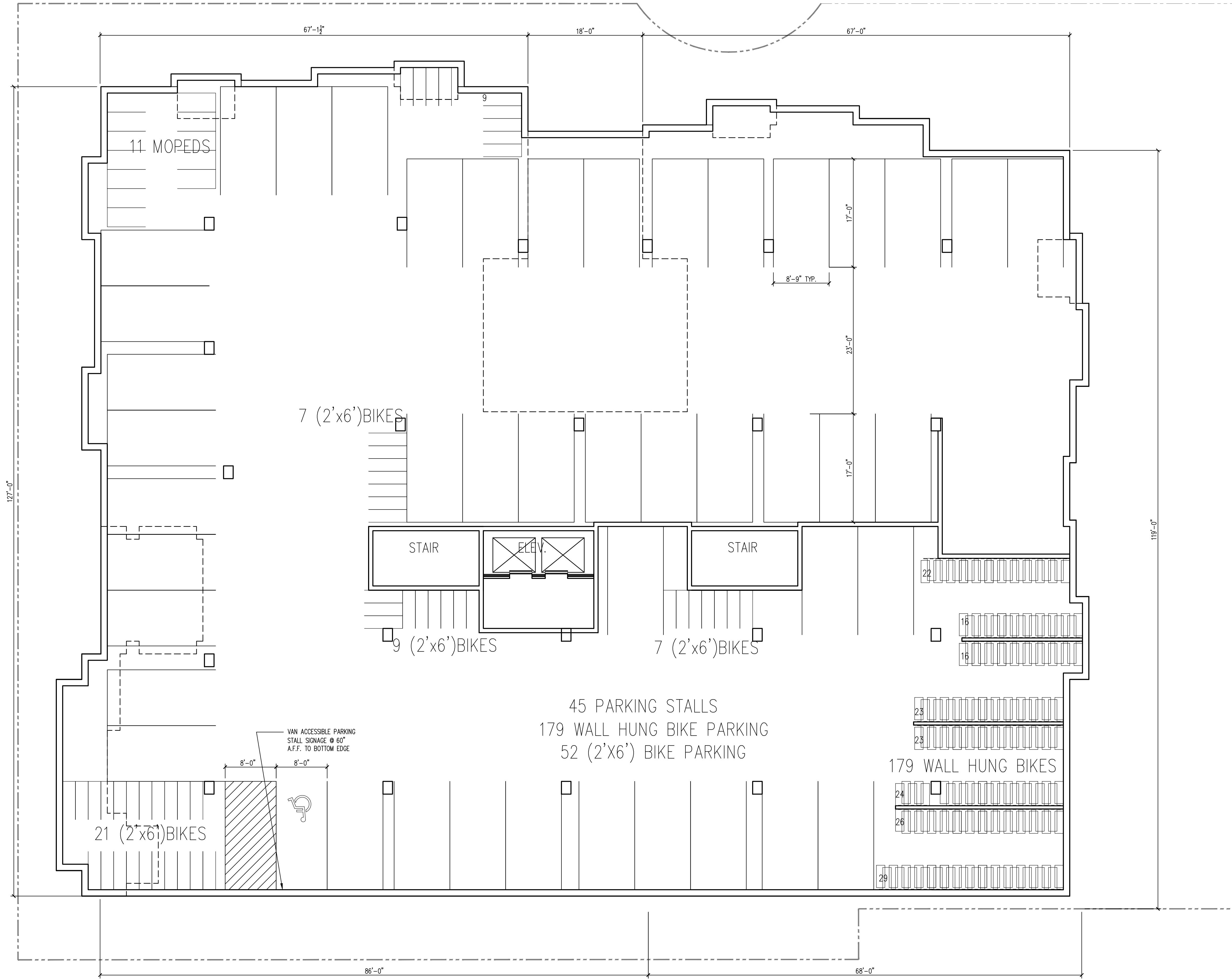


A PLANTING PLAN



Consultant

Notes



Revisions

Land Use Application - October 17, 2012
 Issued Unit Plans To Planning - Nov. 26, 2012

Project Title

**The Waterfront
 Apartments**

625 N. Henry St.

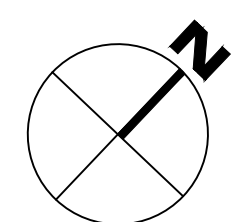
Drawing Title
Parking Level I Plan

Project No.

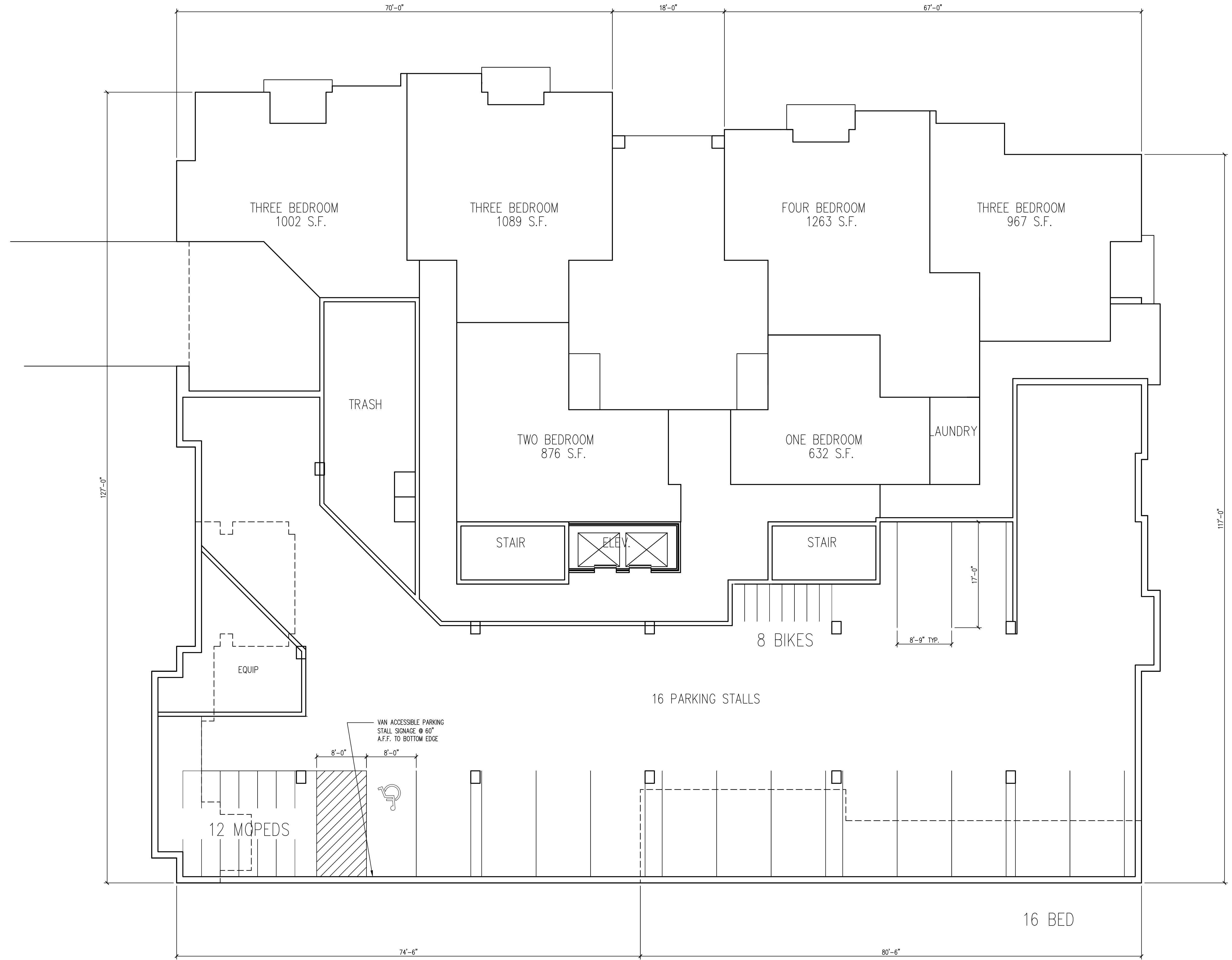
0804

Drawing No.

A-1.P1



PARKING LEVEL 1 PLAN
 1/8" = 1'-0"

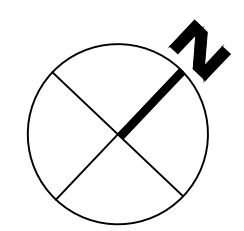


Revisions
 Land Use Application - October 17, 2012
 Issued Unit Plans To Planning - Nov. 26, 2012

Project Title
**The Waterfront
 Apartments**

625 N. Henry St.
 Drawing Title
Ground Floor Plan

Project No. 0804 Drawing No. A-1.0

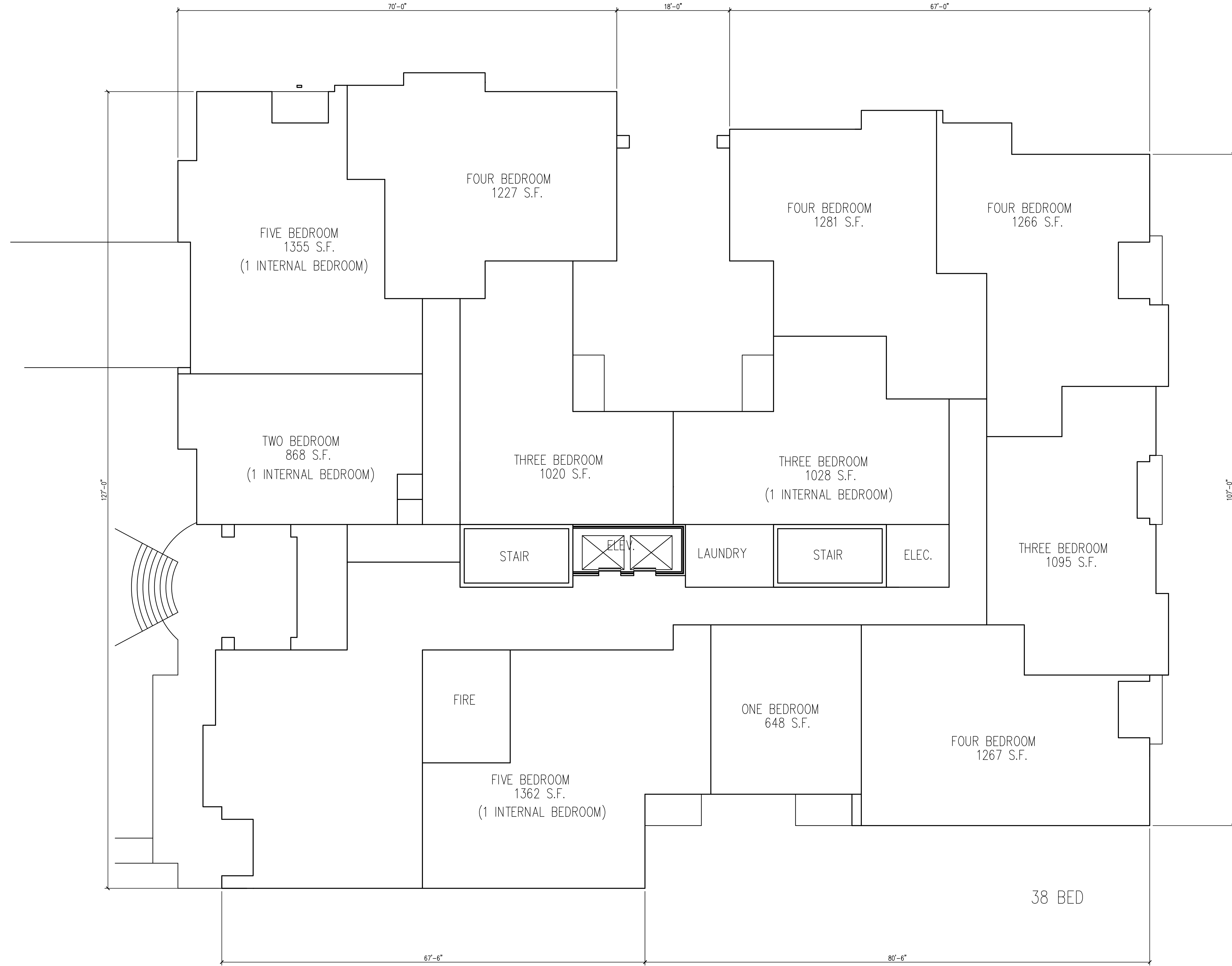


GROUND FLOOR PLAN
 1/8" = 1'-0"

This document contains confidential or proprietary information of Knothe & Bruce. Neither the document nor the information herein is to be reproduced, distributed, altered, or in any way made available to any third party without the express written consent of Knothe & Bruce Architects, a Limited Liability Company of Wisconsin.

Consultant

Notes



Revisions

Land Use Application - October 17, 2012
Issued Unit Plans To Planning - Nov. 26, 2012

Project Title

**The Waterfront
Apartments**

625 N. Henry St.

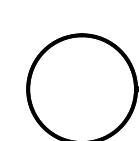
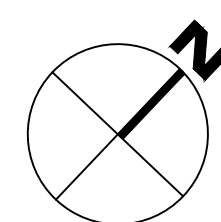
Drawing Title
First Floor Plan

Project No.

0804

Drawing No.

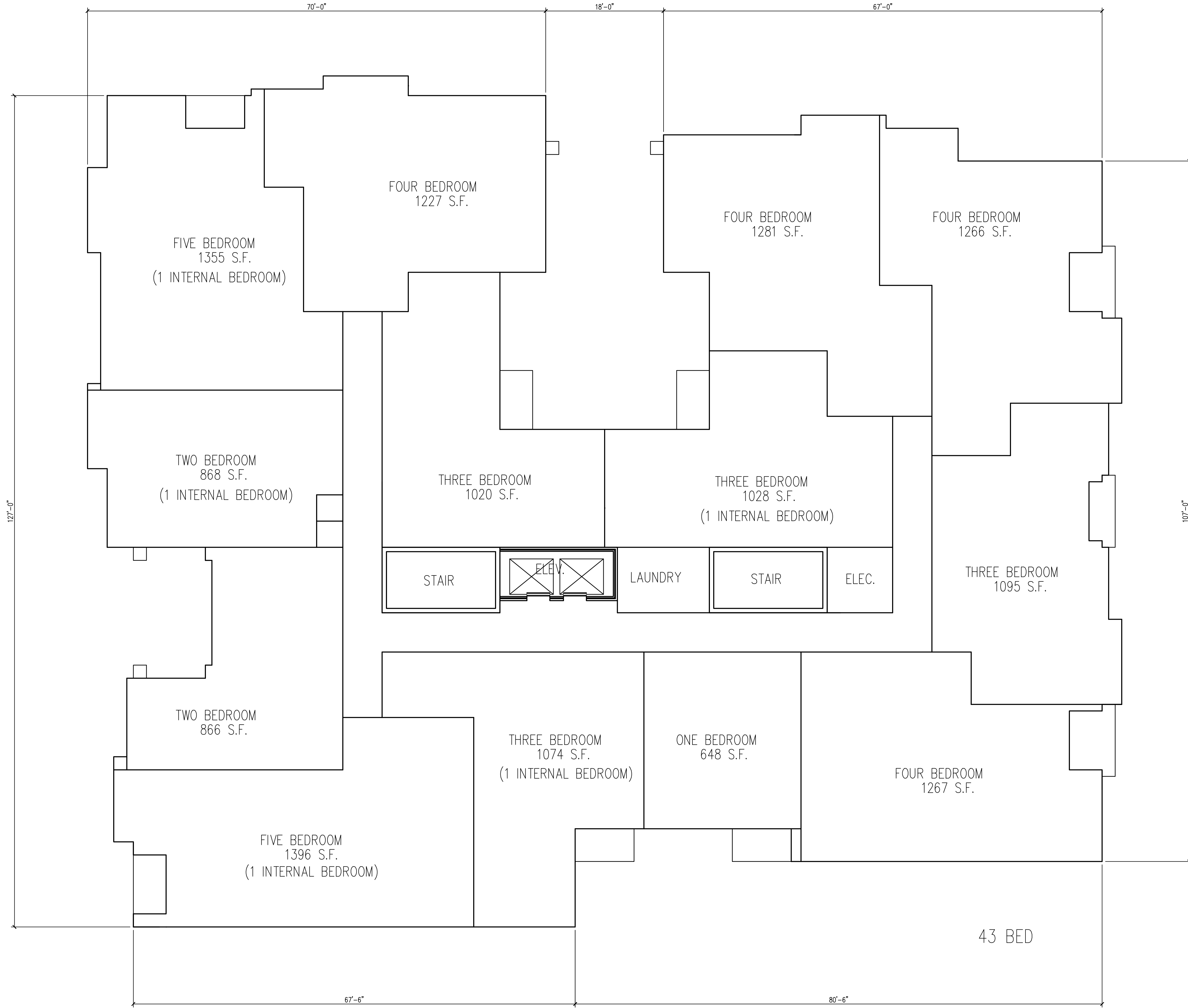
A-1.1



FIRST FLOOR PLAN
1/8" = 1'-0"

Consultant

Notes



Revisions

Land Use Application - October 17, 2012
Issued Unit Plans To Planning - Nov. 26, 2012

Project Title

**The Waterfront
Apartments**

625 N. Henry St.

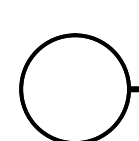
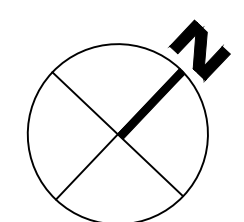
Drawing Title
Second - Fourth Plan

Project No.

0804

Drawing No.

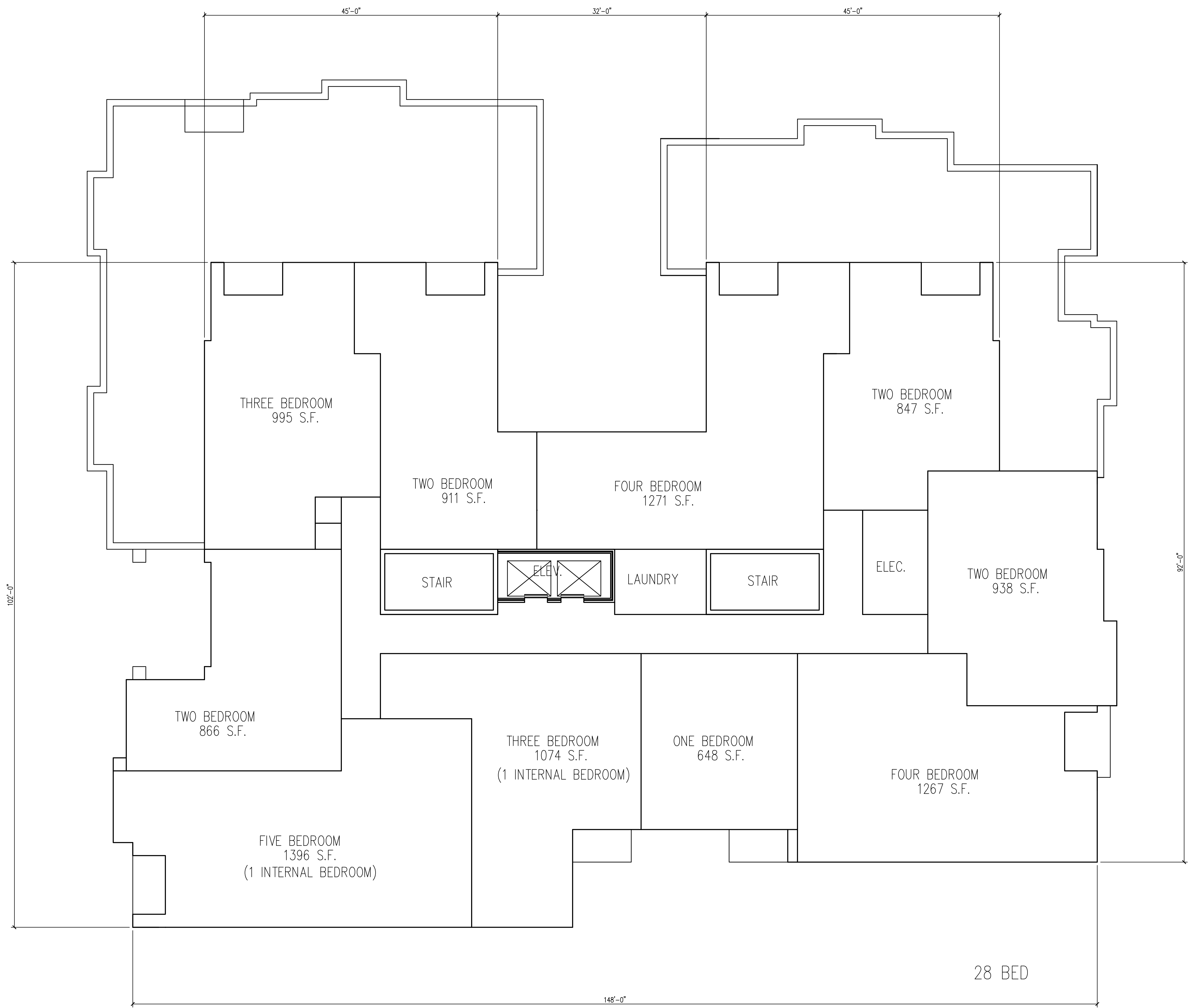
A-1.2



SECOND -FOURTH FLOOR PLANS
1/8" = 1'-0"

Consultant

Notes
-

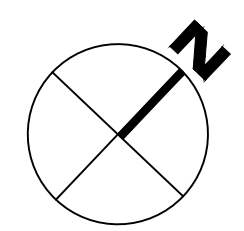


Revisions
Land Use Application - October 17, 2012
Issued Unit Plans To Planning - Nov. 26, 2012

Project Title
**The Waterfront
Apartments**

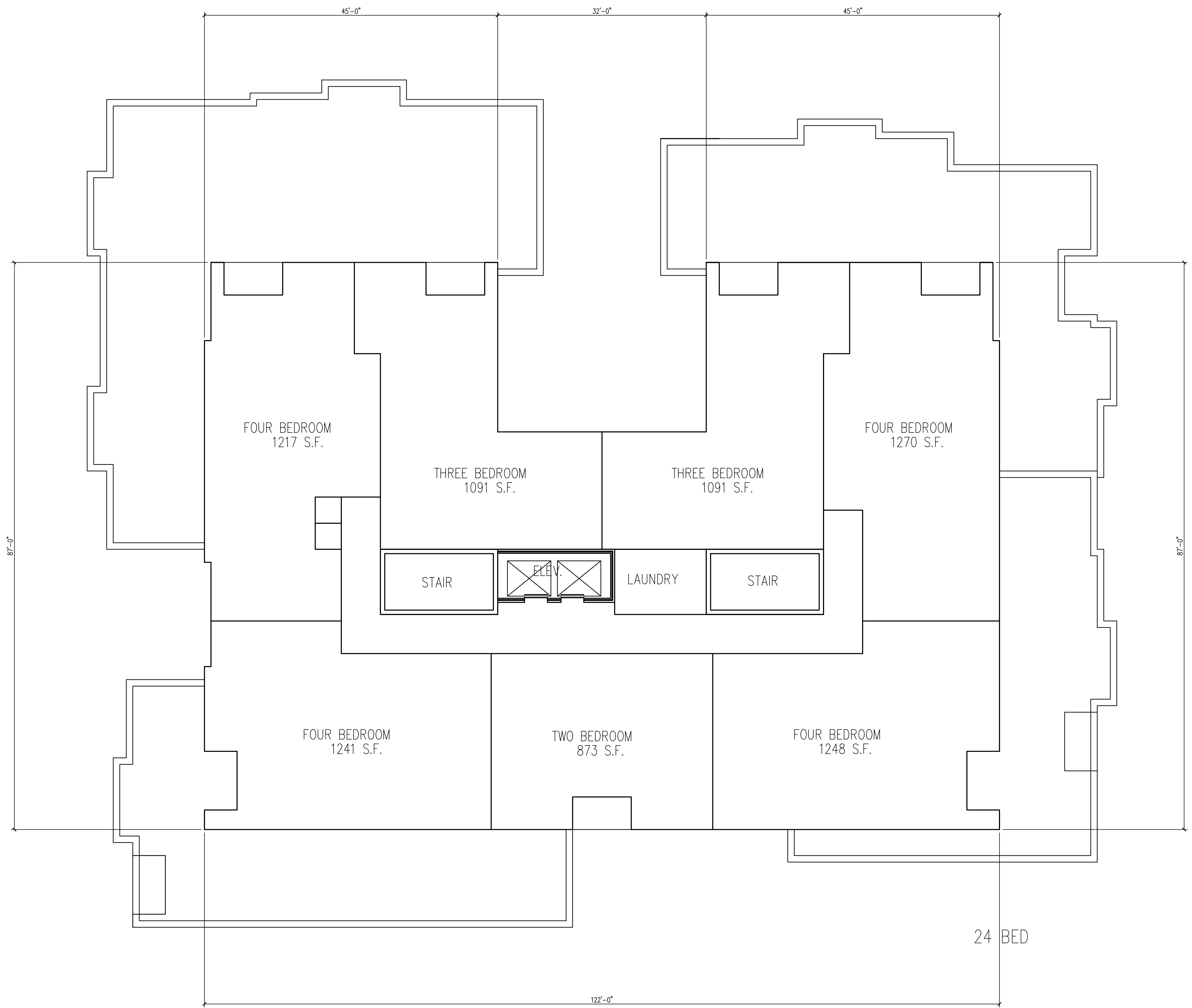
625 N. Henry St.
Drawing Title
Fifth Floor Plan

Project No. Drawing No.
0804 A-1.3



FIFTH FLOOR PLAN
1/8" = 1'-0"

This document contains confidential or proprietary information of Knothe & Bruce Architects. It is to be reproduced, distributed, or otherwise used in whole or in part, except as specifically authorized by Knothe & Bruce Architects, a Limited Liability Company of Wisconsin.

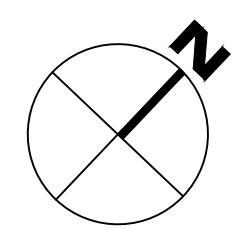


Revisions
Land Use Application - October 17, 2012
Issued Unit Plans To Planning - Nov. 26, 2012

Project Title
**The Waterfront
Apartments**

625 N. Henry St.
Drawing Title
Sixth Floor Plan

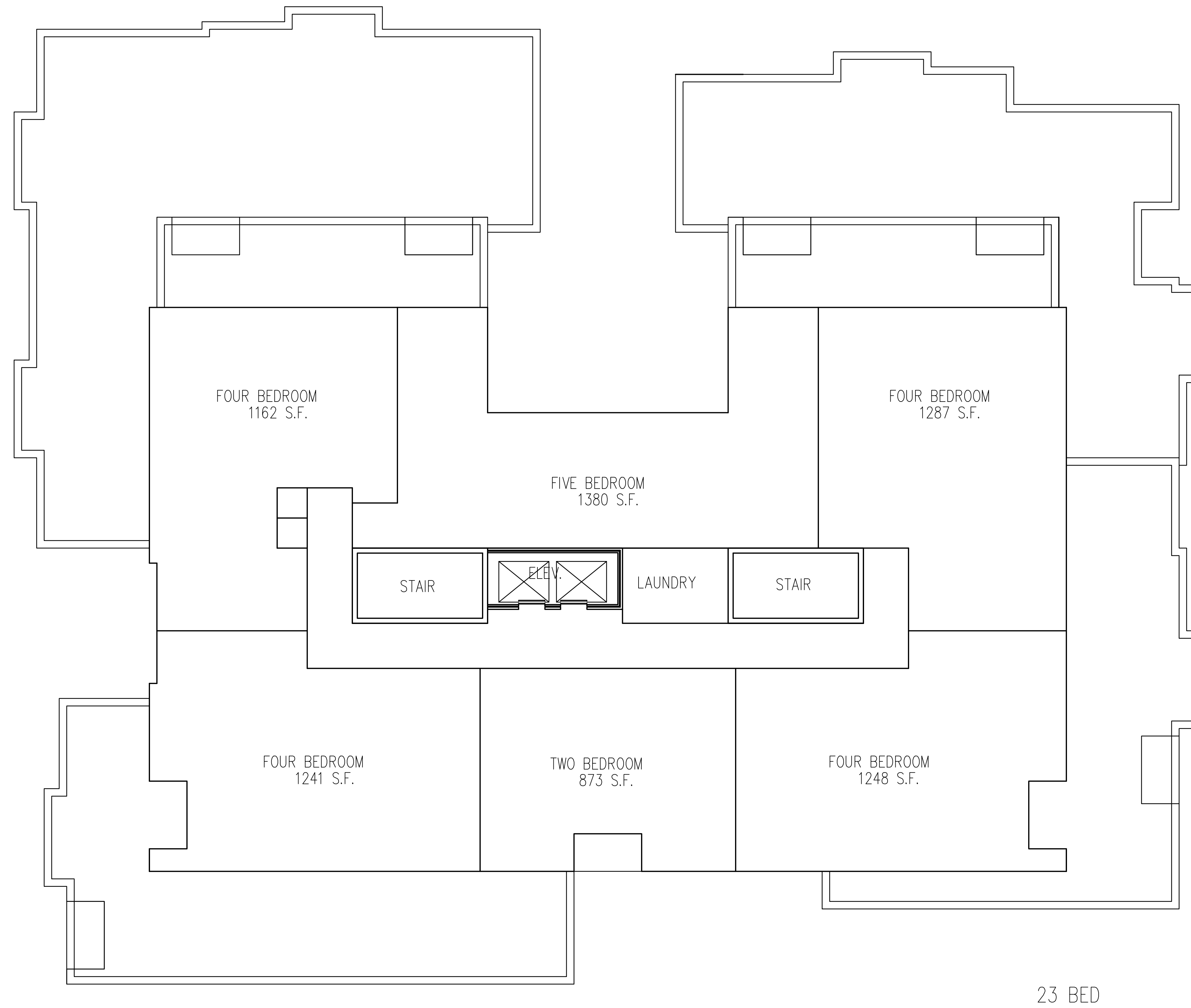
Project No. Drawing No.
0804 A-1.4



SIXTH FLOOR PLAN
1/8" = 1'-0"

Consultant

Notes



Revisions

Land Use Application - October 17, 2012
Issued Unit Plans To Planning - Nov. 26, 2012

Project Title

**The Waterfront
Apartments**

625 N. Henry St.

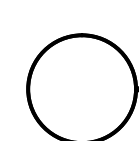
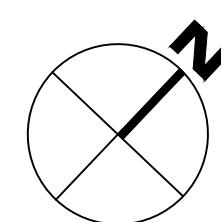
Drawing Title
Seventh Floor Plan

Project No.

0804

Drawing No.

A-1.5

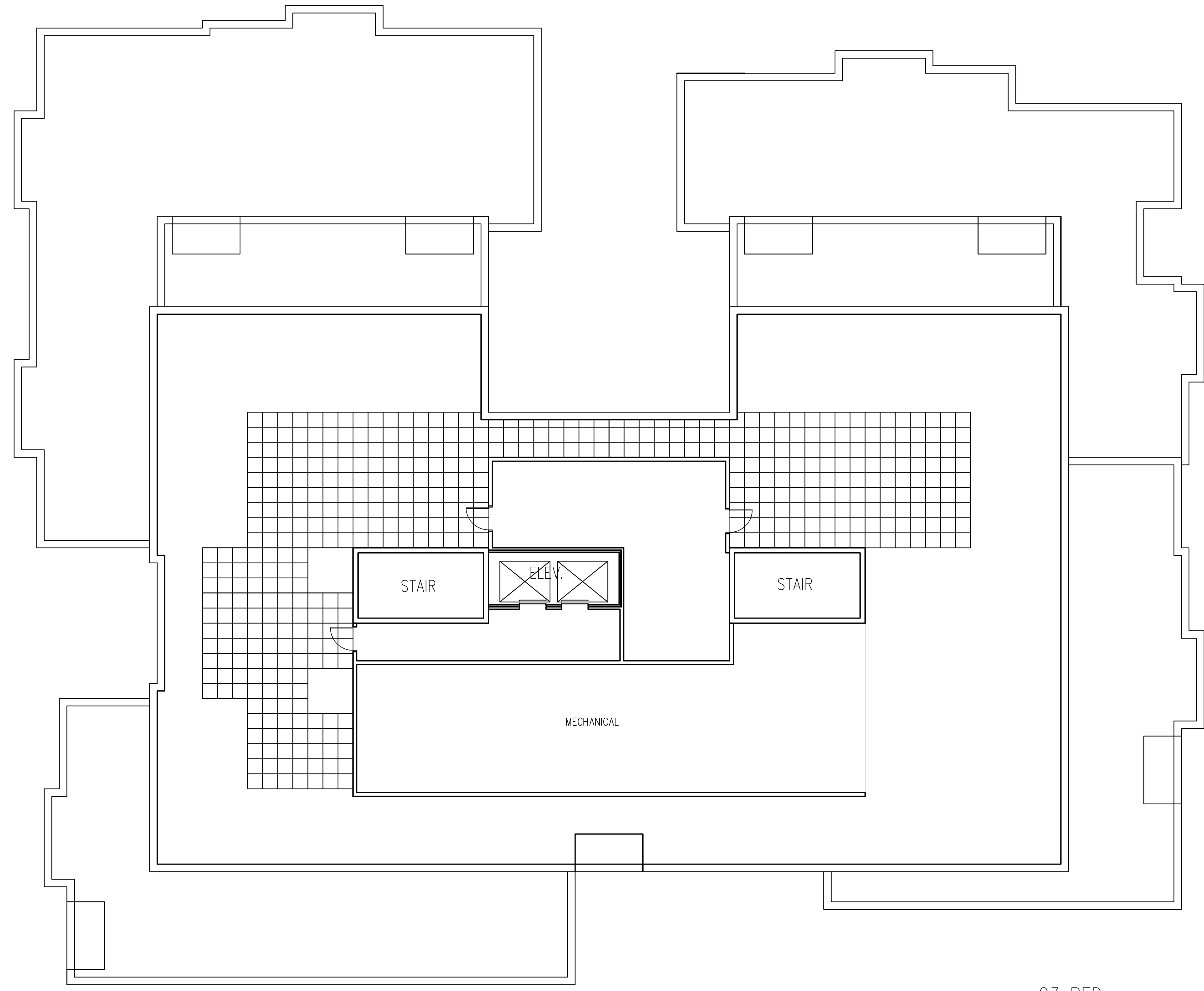


SEVENTH FLOOR PLAN

1/8" = 1'-0"

Consultant

Notes
-



23 BED

Revisions

- Land Use Application - October 17, 2012
- Issued Unit Plans To Planning - Nov. 26, 2012

Project Title

The Waterfront
Apartments

625 N. Henry St.

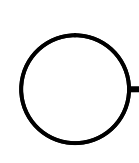
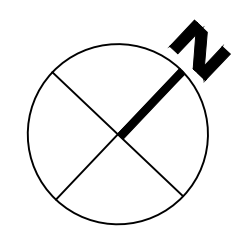
Drawing Title
Penthouse Floor Plan

Project No.

0804

Drawing No.

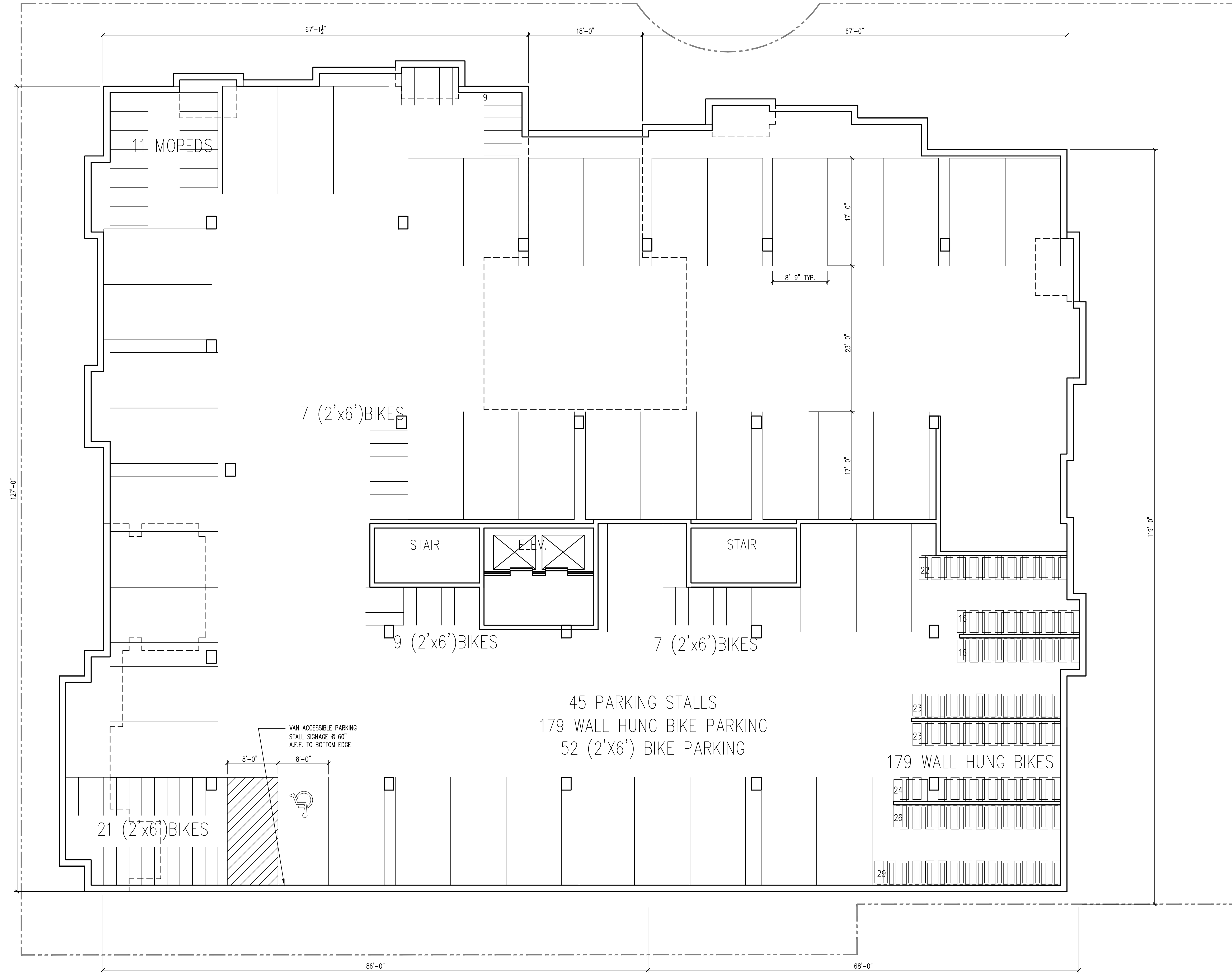
A-1.6



PENTHOUSE FLOOR PLAN
1/8" = 1'-0"

Consultant

Notes

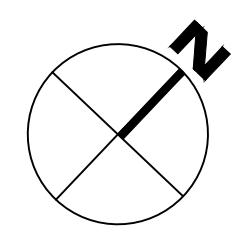


Revisions
 Land Use Application - October 17, 2012
 Issued Unit Plans To Planning - Nov. 26, 2012

Project Title
The Waterfront Apartments

625 N. Henry St.
 Drawing Title
Parking Level I Plan

Project No. 0804 Drawing No. A-1.P1



PARKING LEVEL 1 PLAN
 1/8" = 1'-0"

This document contains confidential or proprietary information of Knothe & Bruce Architects. It is to be reproduced, distributed, either in whole or in part, except as specifically authorized by Knothe & Bruce Architects, a Limited Liability Company of Wisconsin.



Henry Street Elevation



Iota Court Elevation



Northeast Elevation



Southeast Elevation

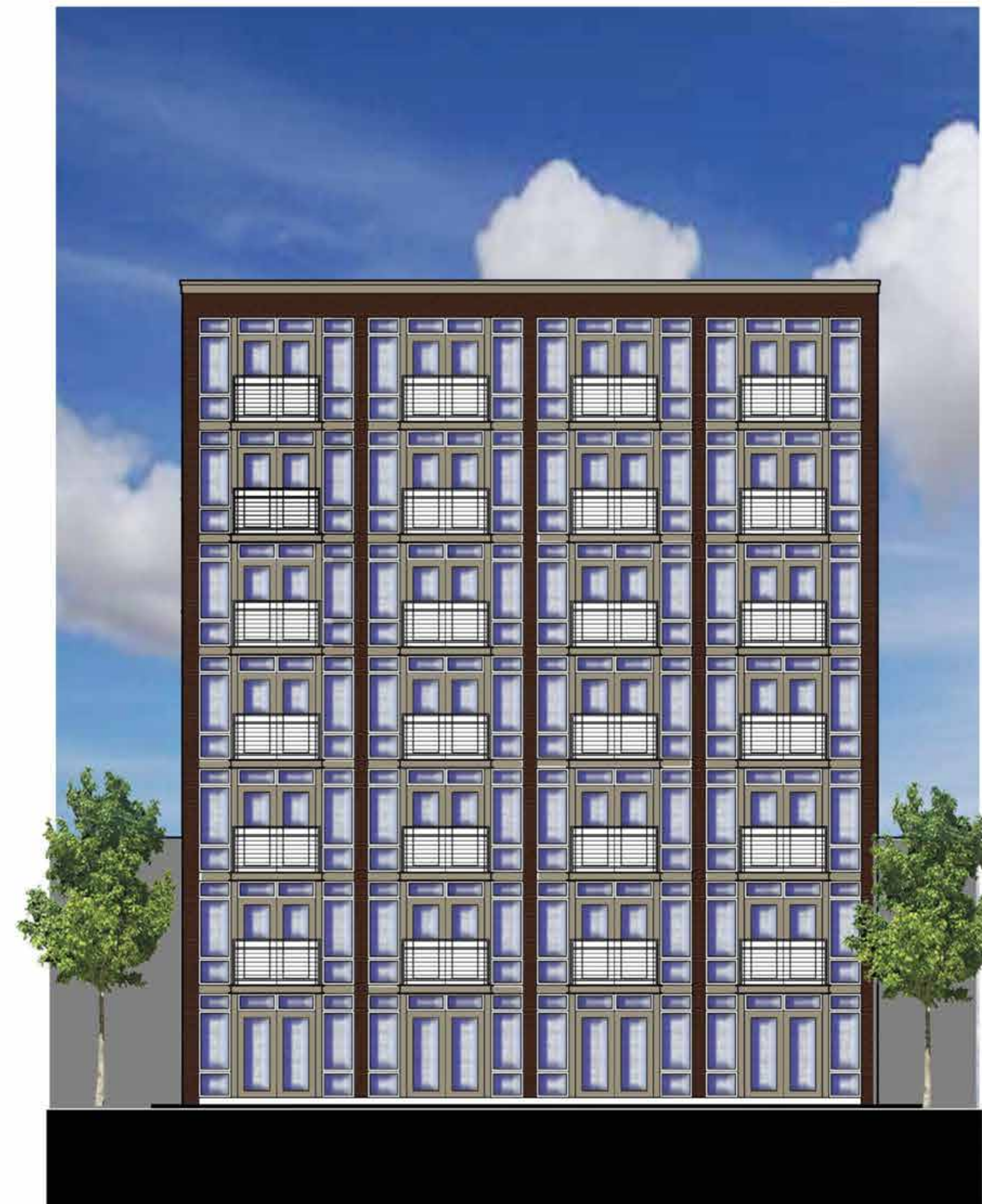
The Waterfront Apartments
Elevations

December 13, 2012
#0804

**KNOTHE
& BRUCE**
architects



140 Iota Court Southeast Elevation



140 Iota Court Northwest Elevation

Iota Court Development
140 Iota Court Elevation

December 18, 2012
#0804

KNOTHE
& BRUCE
architects



The
WATERFRONT
Apartments

Perspective

November 1, 2012

#0804

KNOTHE
& BRUCE
architects