

c. If material changes are proposed, they should generally occur at inside corners or be delineated by a specific transitional detail such as a pronounced belt course or substantial reveal. (Figure 11)

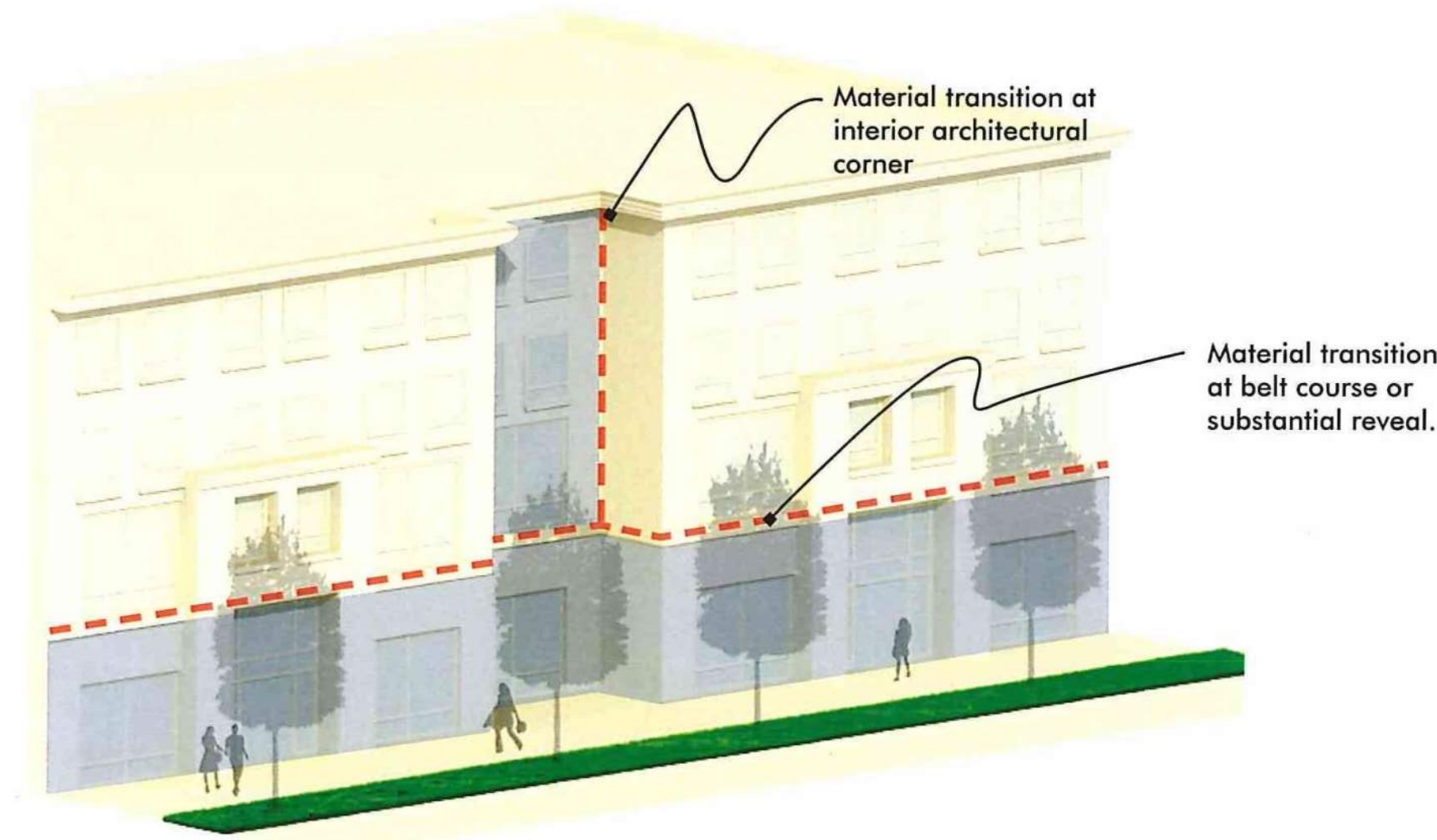


Figure 11

a. The lower levels of street facing facades should generally incorporate a higher level of visual interest and richer architectural detailing. One way to achieve this is to locate active use areas on lower level street side spaces within a building, which could be reflected in the exterior architecture of the corresponding facades. (Figure 8)

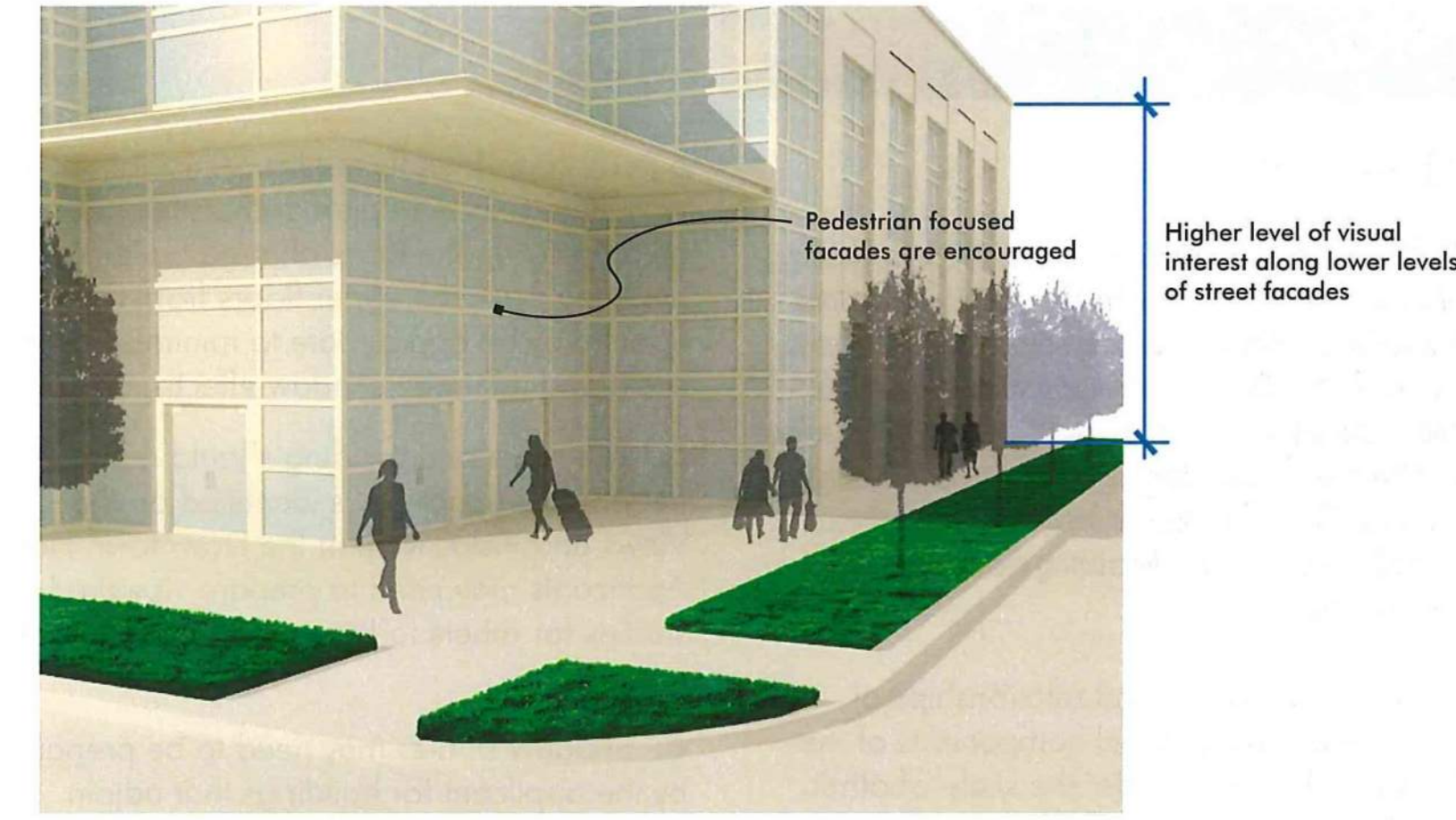


Figure 8

c. Entrances, including doors, should be sized and articulated in proportion to the scale of the building and should be architecturally compatible with the style, materials, and details of the building as a whole. Entrance definition and articulation may be achieved through use of architectural elements such as: lintels, pediments, pilasters, columns, porticoes, porches, overhangs, railings, balustrades, and others, where appropriate.



PREVIOUS

CURRENT

- Delineating building components (base, middle, top), including consideration to elements along the lower 2-3 floors to better visually anchor the tall building on all sides
- Incorporating balanced vertical/horizontal articulation and proportions of design elements.

c. If material changes are proposed, they should generally occur at inside corners or be delineated by a specific transitional detail such as a pronounced belt course or substantial reveal. (Figure 11)

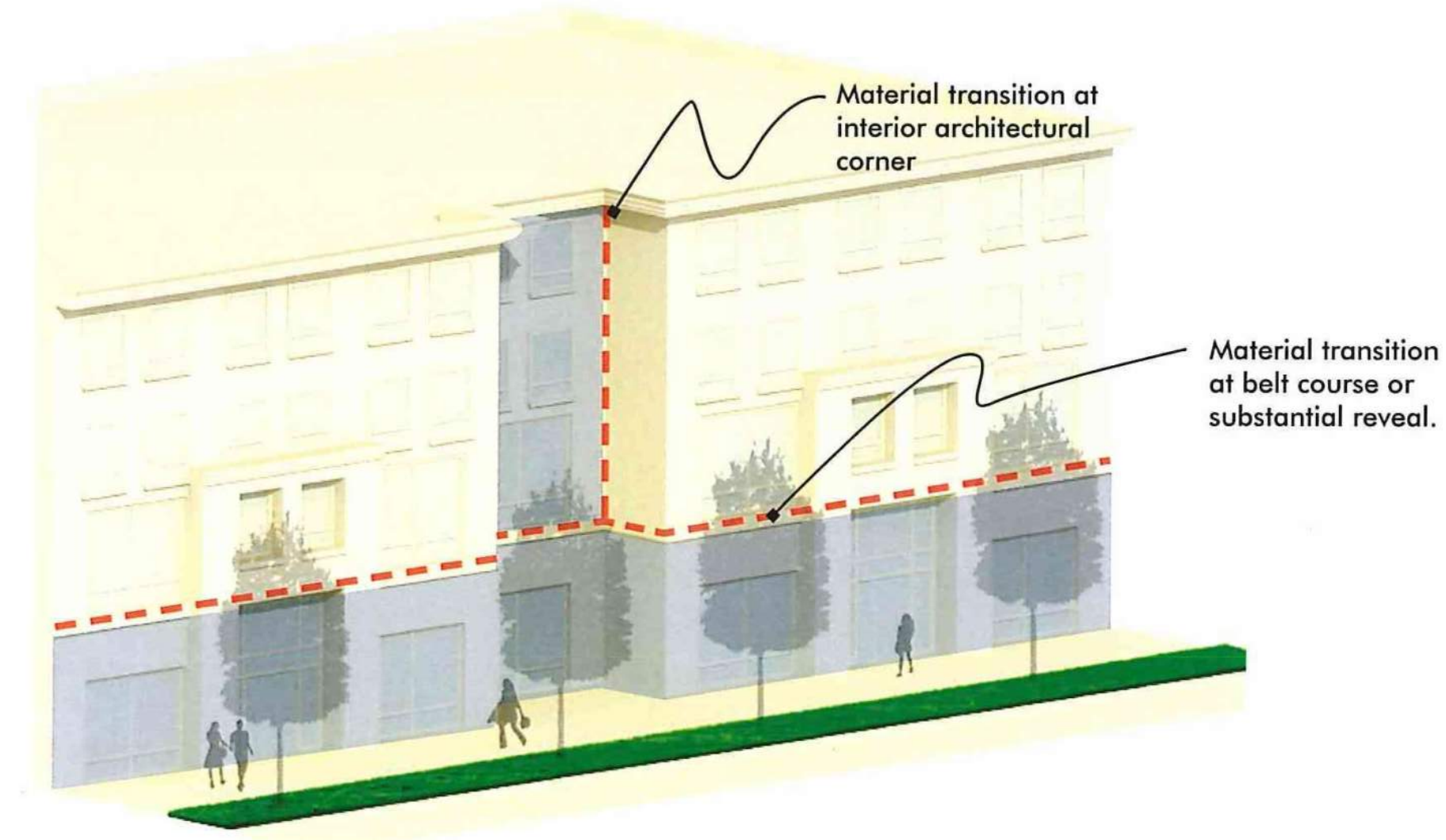


Figure 11

a. The lower levels of street facing facades should generally incorporate a higher level of visual interest and richer architectural detailing. One way to achieve this is to locate active use areas on lower level street side spaces within a building, which could be reflected in the exterior architecture of the corresponding facades. (Figure 8)

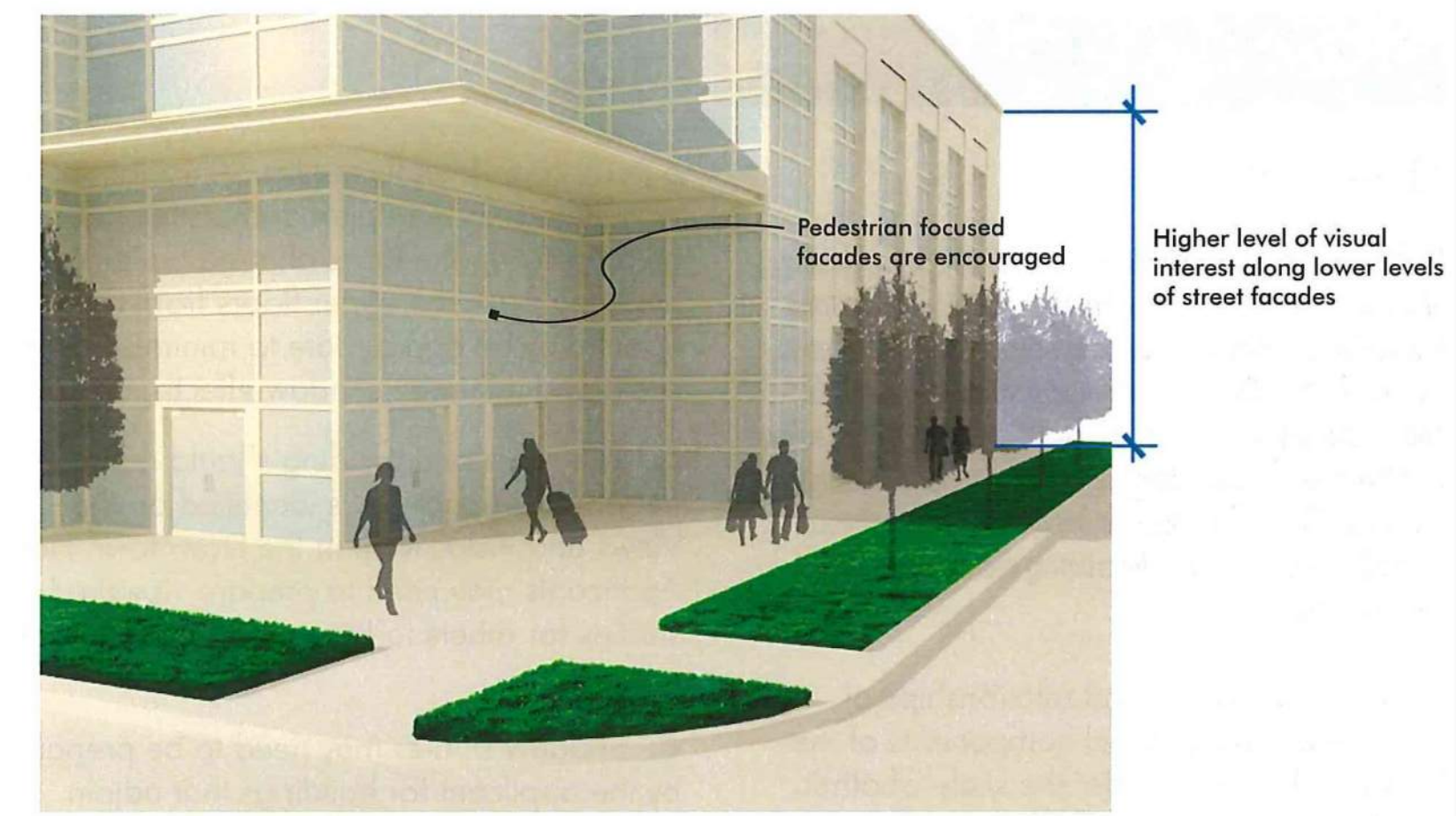


Figure 8

c. Entrances, including doors, should be sized and articulated in proportion to the scale of the building and should be architecturally compatible with the style, materials, and details of the building as a whole. Entrance definition and articulation may be achieved through use of architectural elements such as: lintels, pediments, pilasters, columns, porticoes, porches, overhangs, railings, balustrades, and others, where appropriate.



PREVIOUS



CURRENT

- Look at the scale of the five-story cutout on the Wilson Street façade; consider reducing that height
- Create more cohesion between the top and bottom of the building.
- Delineating building components (base, middle, top), including consideration to elements along the lower 2-3 floors to better visually anchor the tall building on all sides



PREVIOUS



CURRENT



PREVIOUS



CURRENT

- Look at the scale of the five-story cutout on the Wilson Street façade; consider reducing that height.
- Create cohesion between the first four-five stories and the upper levels,
- Consider removing the green elements, especially on the John Nolen side of the building
- Create more cohesion between the top and bottom of the building.
- Delineating building components (base, middle, top), including consideration to elements along the lower 2-3 floors to better visually anchor the tall building on all sides



CURRENT

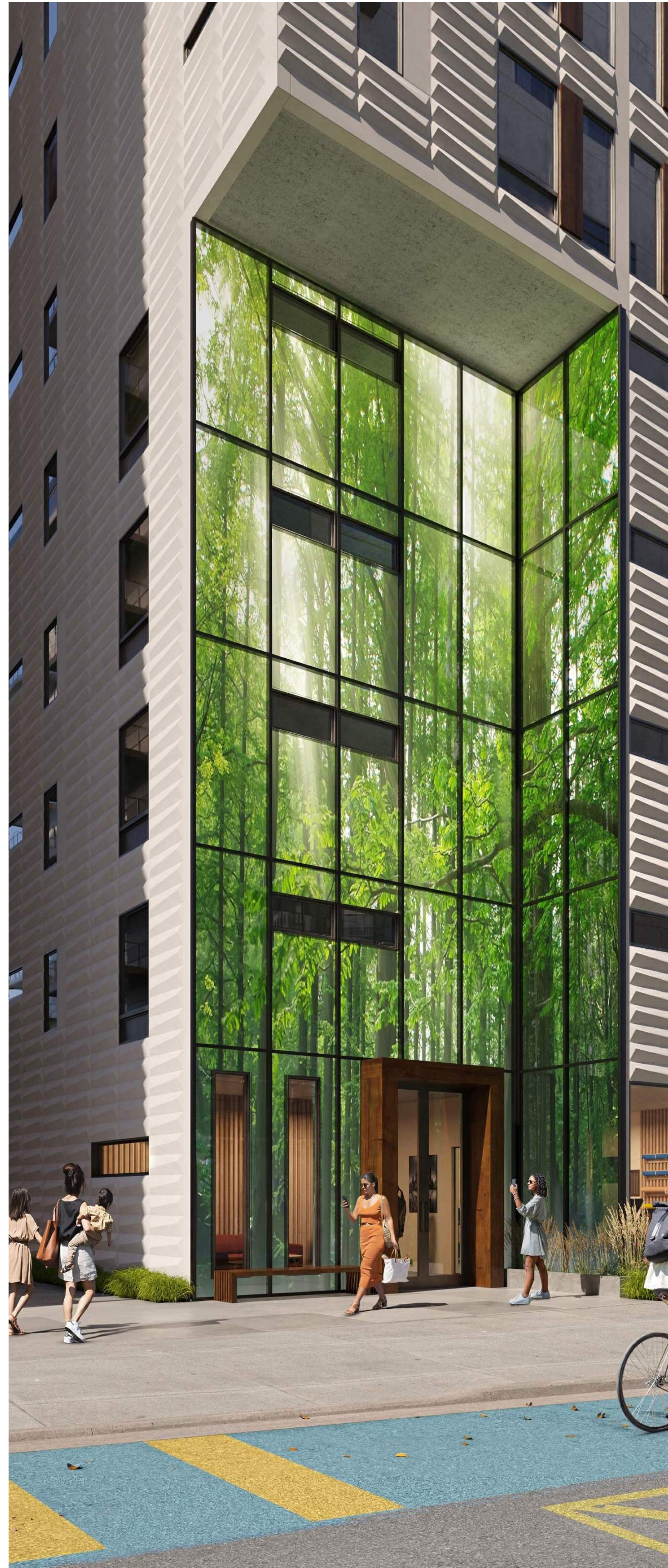
- Look at the scale of the five-story cutout on the Wilson Street façade; consider reducing that height
- Adjust datums to tie into surrounding context
- Designing with a sensitivity to context (proportions/scale, relationships with adjacent buildings, maintaining datum lines, size and rhythm of windows/openings, etc.),



- Look at the scale of the five-story cutout on the Wilson Street façade; consider reducing that height
- Adjust datums to tie into surrounding context
- Designing with a sensitivity to context (proportions/scale, relationships with adjacent buildings, maintaining datum lines, size and rhythm of openings, etc.),

CURRENT

- Wrap the artwork to the underside of the cutout,
- Incorporate more glazing into the lobby area, including wrapping around the east side of the building



PREVIOUS



CURRENT