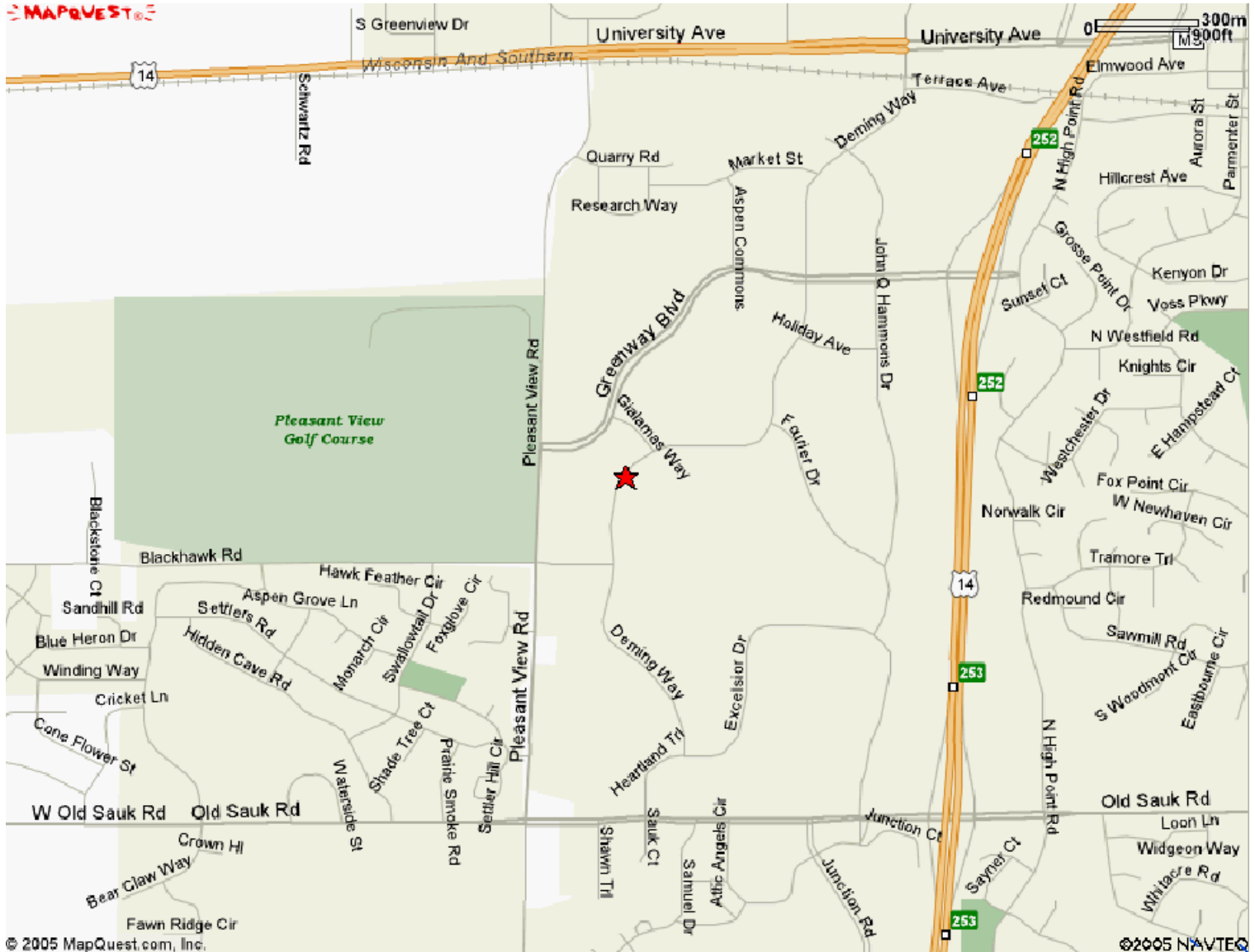
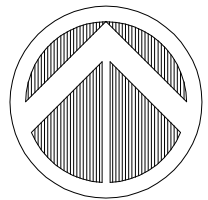


SITE LOCATION MAP



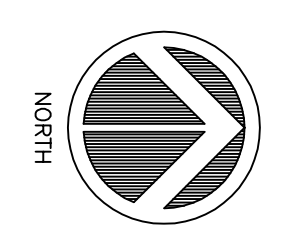
ADDRESS:
1209 Deming Way, Madison, WI 53717



NORTH



1 PARTIAL FIRST FLOOR PLAN
SCALE: 1/8" = 1'-0"



TOMOTHERAPY MANUFACTURING SW OFFICE ADDITION
1209 DEMING WAY
MADISON, VI 53717

ADELPHIA, LLC
8020 EXCELSIOR DRIVE
MADISON, VI 53717

PLANNING
DESIGN BUILD TEAM
PLANNING Design Build, Inc.
901 Deming Way, Suite 102
Madison, WI 53717
608.836.8055
608.836.5818
planning@psrbuild.com

PROJECT #: 20070880
SHEET NUMBER
A201

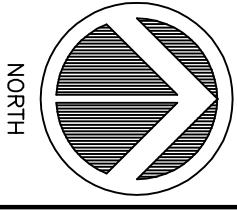
ISSUE DATES:

This document contains confidential or proprietary information. It is intended for the use of the individual named on this document. If you have received this document in error, please notify the individual named on this document immediately. This document is the property of Planning Design Build, Inc.

©2008 PLANNING DESIGN BUILD, INC.

SITE LOCATION MAP

ADDRESS:
STREET, CITY, STATE



PROJECT DIRECTORY

DESIGN-BUILDER
 PLANNING DESIGN BUILD, INC.
 901 DEMING WAY, SUITE 102
 MADISON, WISCONSIN 53717
 PHONE: (608) 836-8055
 FAX: (608) 836-5818

OWNER
 ADELPHIA, LLC
 8020 EXCELSIOR DRIVE
 MADISON, WI 53717
 PHONE: (608) 836-8000
 FAX: (608) 836-7863

CONSULTANT
 ARNOLD & SHERIDAN INC.
 1111 DEMING WAY
 MADISON, WI 53717
 PHONE: (608) 821-8500
 FAX: (608) 821-8501
 www.arnoldandsheridan.com

TOMOTHERAPY

SW OFFICE EXPANSION

BUILDING CODE

BID PACKAGES

INDEX OF DRAWINGS

SHEET	TITLE	SHEET	TITLE	SHEET	TITLE	SHEET	TITLE	SHEET	TITLE	SHEET	TITLE	SHEET	TITLE	SHEET	TITLE
	ARCHITECTURAL														
A001	COVER SHEET														
A100	SITE PLAN														
C100	GRADING AND EROSION CONTROL PLAN														
C200	SITE UTILITY PLAN														
C300	TOP OF CURB PLAN														
L100	LANDSCAPE PLAN														
L102	LANDSCAPE DETAILS														
F201	FIRST FLOOR PLAN														
F202	SECOND FLOOR PLAN														
A301	EXTERIOR ELEVATIONS														

PLANNING
 DESIGN BUILD TEAM

PLANNING DESIGN BUILD, INC.
 901 DEMING WAY, SUITE 102
 MADISON, WI 53717
 608.836.8055
 608.836.5818
 planningdesignbuild.com

TOMOTHERAPY MANUFACTURING SW OFFICE ADDITION

1209 DEMING WAY
 MADISON, WI 53717

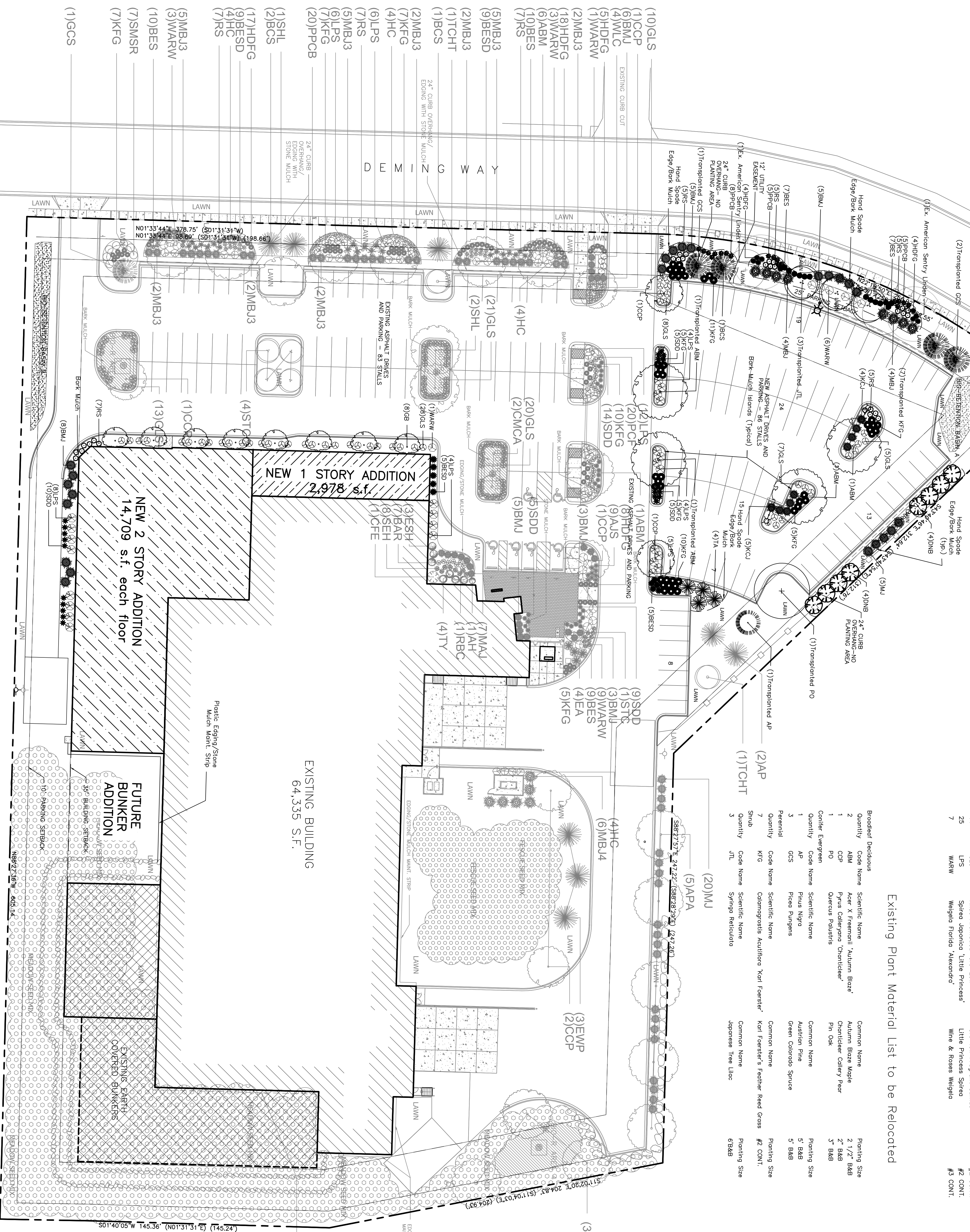
ADELPHIA, LLC
 8020 EXCELSIOR DRIVE
 MADISON, WI 53717

ISSUE DATES:

PROJECT #: 20070980
 SHEET NUMBER
A001

LEGEND

PLANTING SYSTEMS
PLANTING SYSTEMS
PLANTING SYSTEMS



New Plant Material List

Quantity	Code Name	Scientific Name	Common Name	Planting Size	Planting Spacing
2	ABM	Acer x Fraxinifolium 'Autumn Blaze'	Autumn Blaze Maple	2 1/2" B&B	1' x 1'
8	CCP	Pyrus Calleryana 'Chancellor'	Chancellor Callery Pear	2" B&B	1' x 1'
8	OB	Ginkgo biloba 'Autumn Gold'	Ginkgo biloba	2" B&B	1' x 1'
1	Quantity	Scientific Name	Common Name	Planting Size	Planting Spacing
10	BMU	Pyrus Burgundy Formo Group	Broomrape Juniper	#2 CONT.	1' x 1'
5	KCU	Juniperus Chienensis 'Katy Compact'	Merry Juniper	#2 CONT.	1' x 1'
5	MU	Juniperus Chienensis 'Munster'	Munster Juniper	#2 CONT.	1' x 1'
4	MU	Juniperus Chienensis 'Munster'	Munster Juniper	#2 CONT.	1' x 1'
4	TA	Thuja occidentalis 'Tenny'	Tenny Thuja	#2 CONT.	1' x 1'

Existing Plant Material List to be Relocated

Quantity	Code Name	Scientific Name	Common Name	Planting Size	Planting Spacing
10	BESD	Rubus odoratus 'Spartan'	Blackberry	#2 CONT.	1' x 1'
14	BES	Rubus odoratus 'Spartan'	Blackberry	#2 CONT.	1' x 1'
8	HGC	Hamamelis virginica	Witch Hamamelis	#2 CONT.	1' x 1'
36	KFG	Calluna vulgaris 'Katy Compact'	Merry Juniper	#2 CONT.	1' x 1'
18	PCB	Persea caroliniana 'Palmer Purple'	Palmer Purple	#2 CONT.	1' x 1'
27	RS	Rosa rugosa 'Rosa rugosa'	Rosa rugosa	#2 CONT.	1' x 1'
20	SO	Sorbus domestica 'Sora'	Sora Sorbus	#2 CONT.	1' x 1'

BIO-RETENTION BASIN PLANTING SCHEDULE

Quantity	Code Name	Scientific Name	Common Name	Planting Size	Planting Spacing
1	AG	Agrostis sp.	Agrostis	1" x 1"	1' x 1'
1	GR	Grasses and Sedges	Grasses and Sedges	1" x 1"	1' x 1'
1	SE	Sedges	Sedges	1" x 1"	1' x 1'
1	FL	Flowers	Flowers	1" x 1"	1' x 1'
1	FR	Ferns	Ferns	1" x 1"	1' x 1'
1	MO	Mosses	Mosses	1" x 1"	1' x 1'
1	SH	Shrubs	Shrubs	1" x 1"	1' x 1'
1	TR	Trees	Trees	1" x 1"	1' x 1'

PLANNING DESIGN BUILD TEAM

PLANNING Design Build, Inc.
901 Deming Way, Suite 102
Madison, WI 53717
608.836.8005
608.836.8118
planningdesignbuild.com

GENERAL NOTES

- Areas labeled "Bark Mulch" to receive a mixture of hardwood shredded bark mulch spread to a 3" depth over pre-emergent.
- Individual trees (and shrub groupings) found along perimeter bark rings (and bark beds) consisting of a mixture of hardwood shredded bark mulch spread to a minimum 3" depth (3" wide bed for shrub groupings).
- "Hard Spade Edging" to be bed edge cut by hand spade shovels or by machine edger.
- "Hard Spade Edging" to be made using a minimum 65" Truck Mounted Tree Spade.
- Tree transplants to be made using a minimum 65" Truck Mounted Tree Spade.
- Existing plant material that is to be relocated should be well as the site conditions should dictate whether or not the move is advised, and will result in a successful transplant.

TRANSPLANT GENERAL NOTES

- Tree transplants to be made using a minimum 65" Truck Mounted Tree Spade.
- Existing plant material that is to be relocated should be well as the site conditions should dictate whether or not the move is advised, and will result in a successful transplant.

THE BRUCE COMPANY
LANDSCAPE ARCHITECTS LANDSCAPE CONTRACTORS
2515 W. BENTLEY AVE. MADISON, WI 53705-1001 TEL: 608.261.4000 FAX: 608.261.4001

PROJECT #: 20070880
SHEET NUMBER: L100

ISSUE DATES:

2008 PLANNING DESIGN BUILD, INC.

1 LANDSCAPE PLAN
SCALE: 1" = 30'-0"

TOMOTHERAPY MANUFACTURING SW OFFICE ADDITION
1209 DEMING WAY
MADISON, WI 53717

ADELPHIA, LLC
8020 EXCELSIOR DRIVE
MADISON, WI 53717

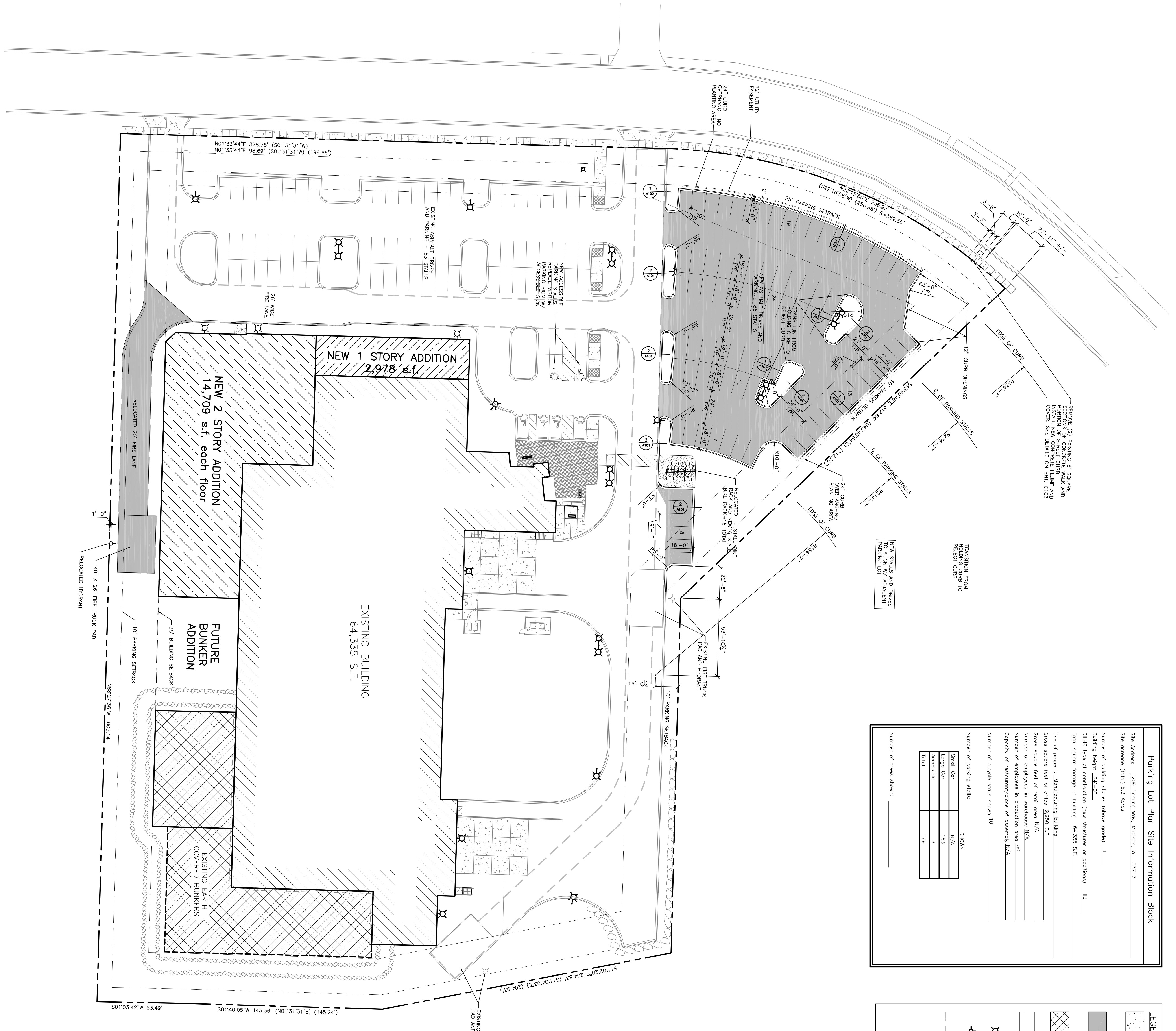
PLANNING DESIGN BUILD, INC.
901 DEMING WAY, SUITE 102
MADISON, WI 53717
608.836.8005
608.836.8118
planningdesignbuild.com

THE BRUCE COMPANY
LANDSCAPE ARCHITECTS LANDSCAPE CONTRACTORS
2515 W. BENTLEY AVE. MADISON, WI 53705-1001 TEL: 608.261.4000 FAX: 608.261.4001

PROJECT #: 20070880
SHEET NUMBER: L100

ISSUE DATES:

2008 PLANNING DESIGN BUILD, INC.



Parking Lot Plan Site Information Block

Site Address: 1209 Deming Way, Madison, WI 53717
 Site acreage (total): 82.2 acres
 Number of building stories (above grade): 1
 Building height: 24'-0"
 Total square footage of building: 64,335 S.F.
 Total square footage of parking: 64,335 S.F.
 Use of property: Manufacturing Building
 Gross square feet of total area: N/A
 Number of employees: 200
 Number of employees in production area: 50
 Capacity of restaurant/office of assembly: N/A
 Number of bicycle stalls shown: 10

Number of parking stalls:

Small car	N/A
Large car	163
Accessible	6
Total	169

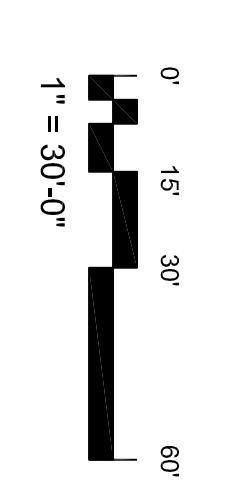
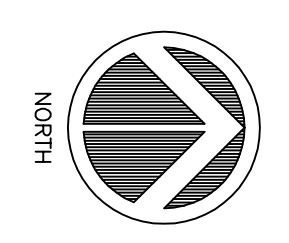
Number of trees shown: _____

LEGEND

- CONCRETE FLATWORK
- NEW 1" BITUMINOUS FANUC (1/2" SURFACE COURSE AND 3/4" BRIDGE COURSE) OVER AN 8" THICK STONE BASE COMPOSED OF #4" OR BREAKER RUN STONE & #4" OR 3/4" STONE
- AREA OF EXISTING EARTH COVERED ROOF
- CONCRETE CURB AND GUTTER
- PARKING LOT LIGHT POLE. SEE SHEET E100
- EXISTING FIRE HYDRANT
- EDGE OF FIRE LANE

NOTE: ALL PAVEMENT MARKINGS ARE TO BE WHITE

1 SITE PLAN
 AND SCALE: 1" = 30'-0"



TOMOTHERAPY MANUFACTURING SW OFFICE ADDITION

1209 DEMING WAY
MADISON, WI 53717

ADELPHIA, LLC
8020 EXCELSIOR DRIVE
MADISON, WI 53717

PLANNING
DESIGN BUILD TEAM

PLANNING DESIGN BUILD, INC.
901 DEMING WAY, SUITE 102
MADISON, WI 53717
608.836.8085
608.836.8118
planningdesignbuild.com

ISSUE DATES:	
PROJECT #: 20070880	
SHEET NUMBER	
A100	

This document contains confidential or proprietary information of Planning Design Build, Inc. Review the document and its contents in strict confidence. Do not disseminate, reproduce, or use the information contained herein without the prior written consent of Planning Design Build, Inc.

©2008 PLANNING DESIGN BUILD, INC.

