

QUANN PARK TENNIS COURT RECONSTRUCTION

LOCATION MAP



GOODMAN POOL/
MAINTENANCE
FACILITY

WATER
UTILITY

WINGRA CREEK

QUANN PARK

QUANN-OLIN PKWY

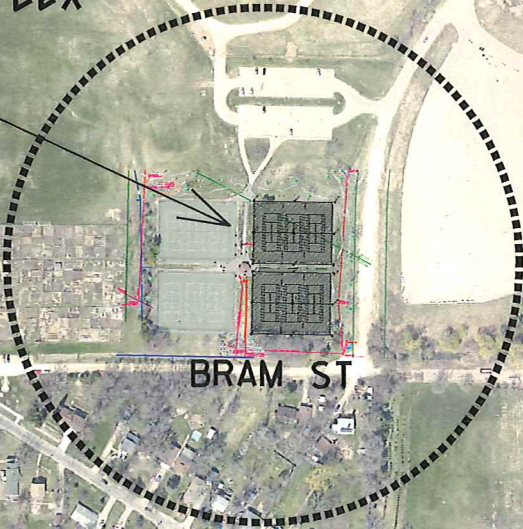
JOHN NOLEN DR

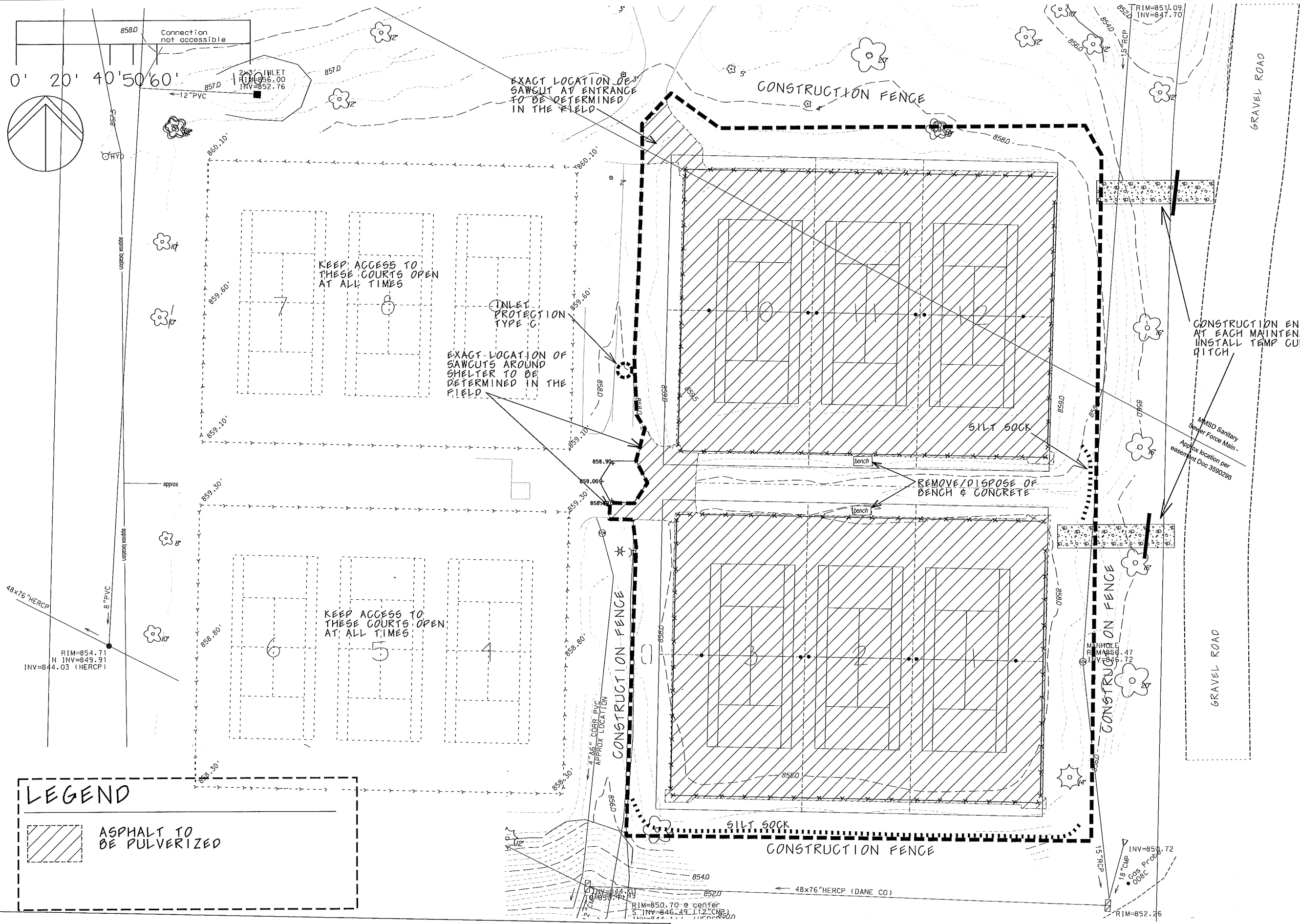
S PARK ST

QUANN PARK TENNIS COMPLEX
1802 QUANN-OLIN PKWY
MADISON, WI 53713

ALLIANT
ENERGY
CENTER

BRAM ST

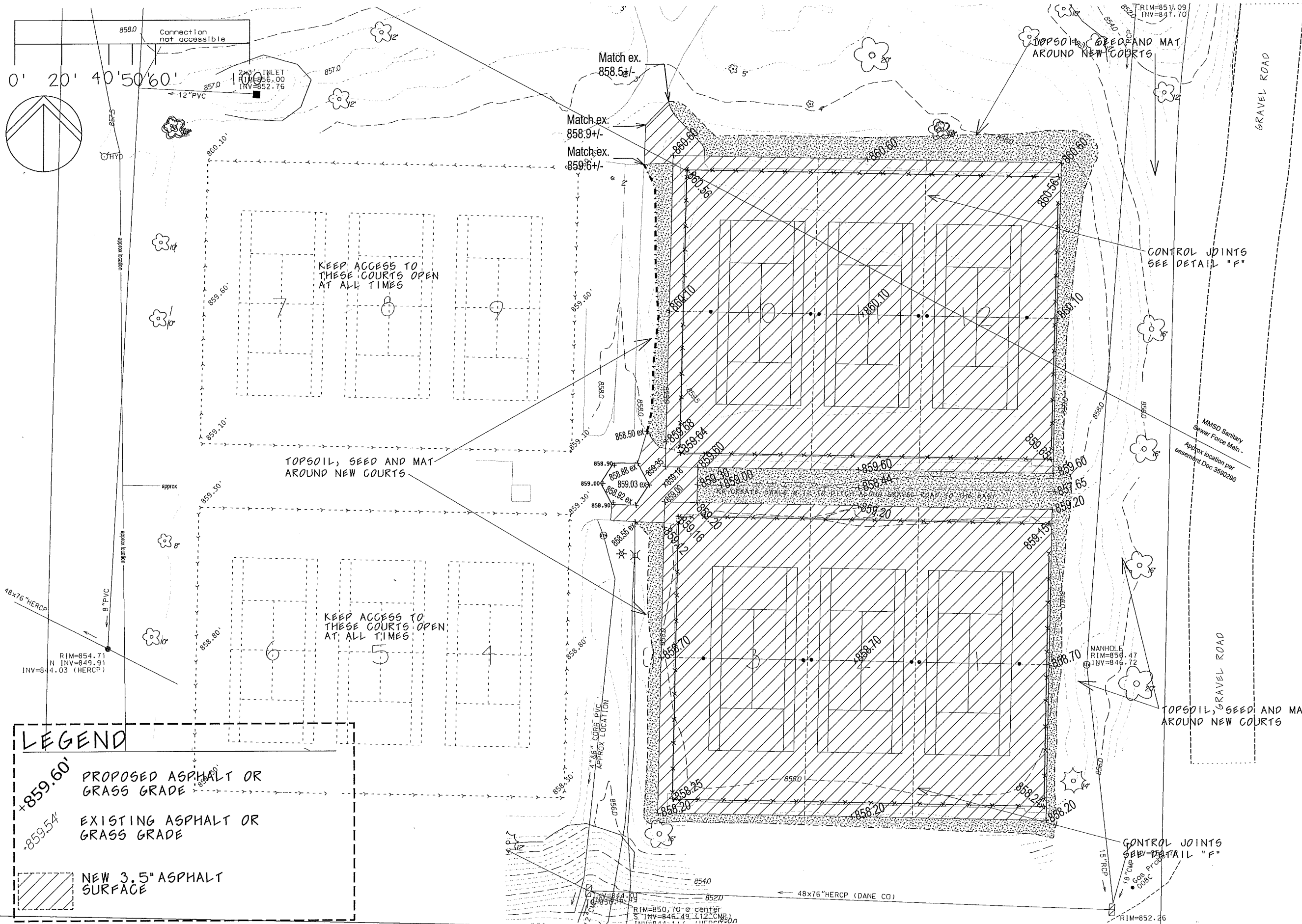




LEGEND

 ASPHALT TO BE PULVERIZED

**DEMOLITION/EC PLAN
 QUANN PARK TENNIS COURT
 RE-CONSTRUCTION-PHASE 2**



LEGEND

- +859.60' PROPOSED ASPHALT OR GRASS GRADE
- +859.54' EXISTING ASPHALT OR GRASS GRADE
- [Hatched Box] NEW 3.5" ASPHALT SURFACE

LAYOUT PLAN
**QUANN PARK TENNIS COURTS
 RE-CONSTRUCTION - PHASE 2**