



SITE ASSESSMENT





Stakeholders We Have Met With

- Public
- UW Design Review Board
- Vendors
- Pres House/Subway
- University Book Store
- St. Paul's Church
- Wisconsin Historical Society
- City Staff and Departments
 - Engineering
 - Planning
 - Vending
 - Forestry
 - Parks
 - Fire Department
 - Water Utility



Initial Data Gathering—Feedback and Comments

Below is a summary of the comments and feedback that was provided from the stakeholders during the preliminary data gathering portion of the State Street/Library Mall project. The column on the left lists the comment while the column on the right list indicates the number of tables that repeated that comment or had a comment that was similar.

Includes comments from:

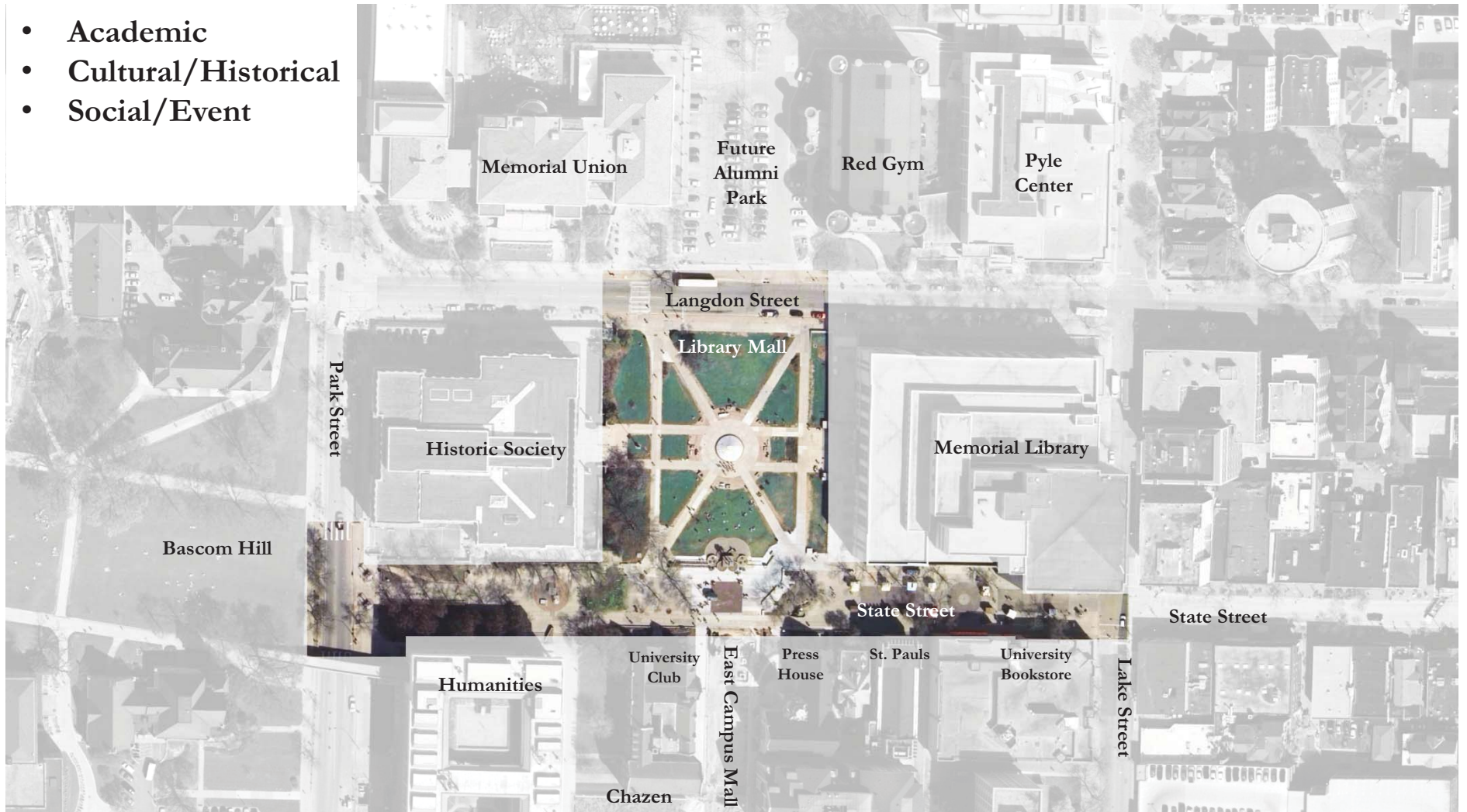
- Public Meeting
- Stakeholder Meetings (Subway, Pres House, University Book Store, Vendors)
- Progress Meetings

General Comments:	
Is Fitch Ct park of this project? Would like to see something similar what was done on Hawthorne Court to make the street/alley more utilized and provide more bike parking.	
More Trash/Recycling Receptacles to accommodate the food cart waste.	2
Make the entrance to State Street/Library Mall more inviting to signify you are entering a special space. Gateway entrance at book ends/columns. Recognize that this is a major gateway to the university. There is no signage or maps.	3
If there is a new kiosk design, make it so that bikes cannot be chained to them.	
Improve way-finding through perimeter/gateway markers.	2
A lot of gray/concrete drab. Add softer features, more human scale features, and color.	7
Incorporate sustainable elements: storm water retention, permeable pavement. Think about general	2



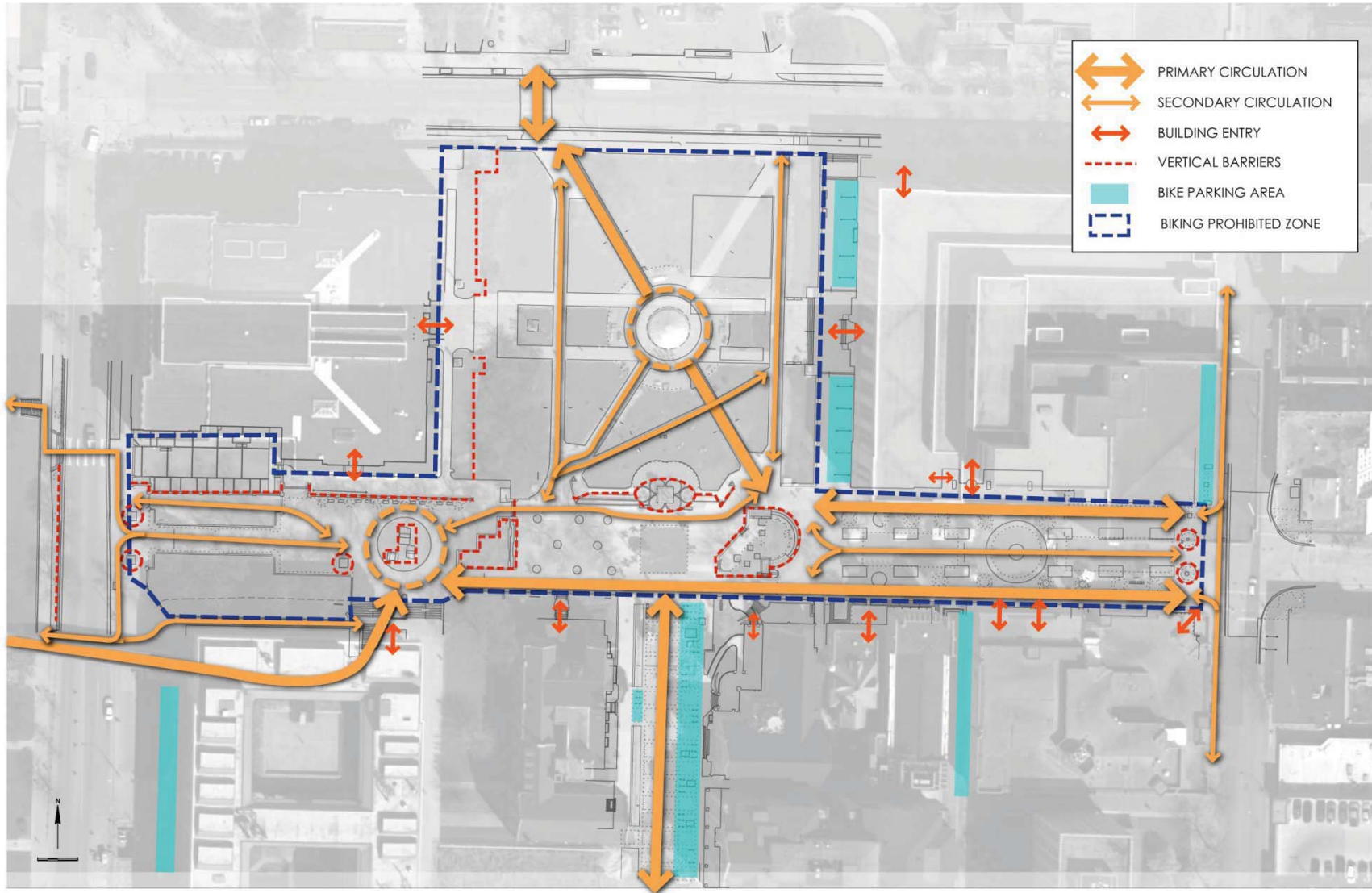
Site Context

- Academic
- Cultural/Historical
- Social/Event



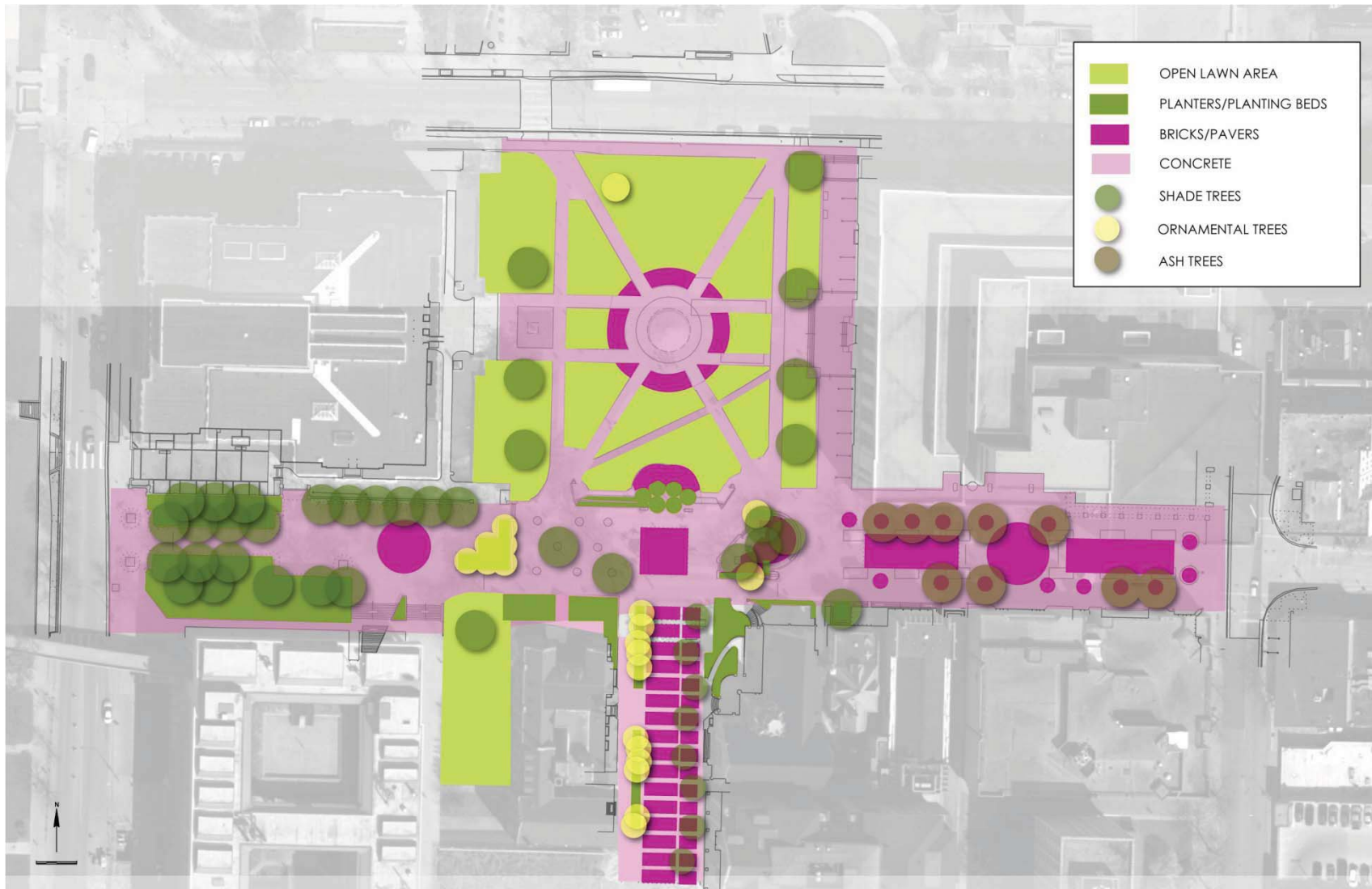


CIRCULATION ANALYSIS



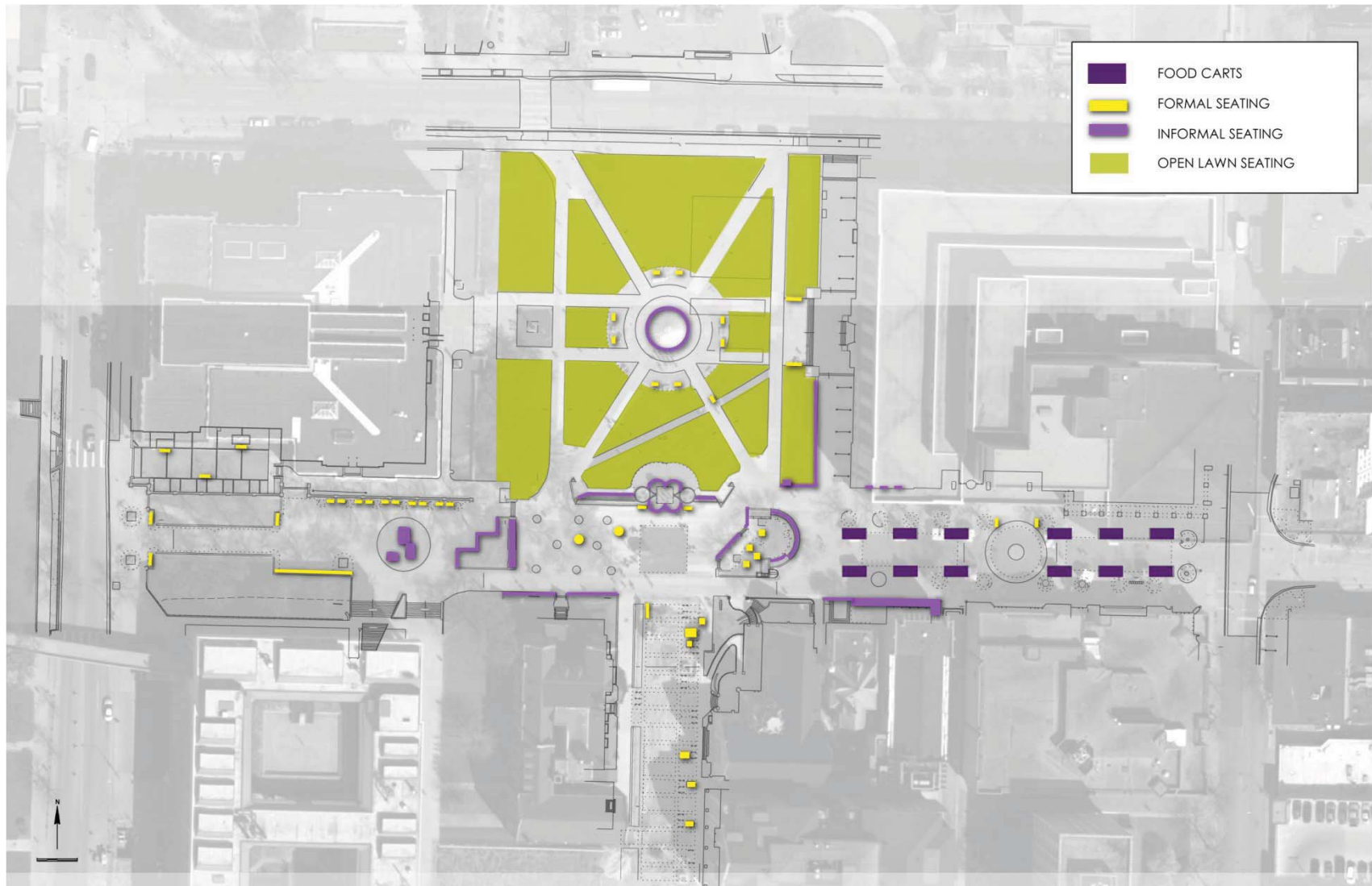


PAVING & PLANTING ANALYSIS



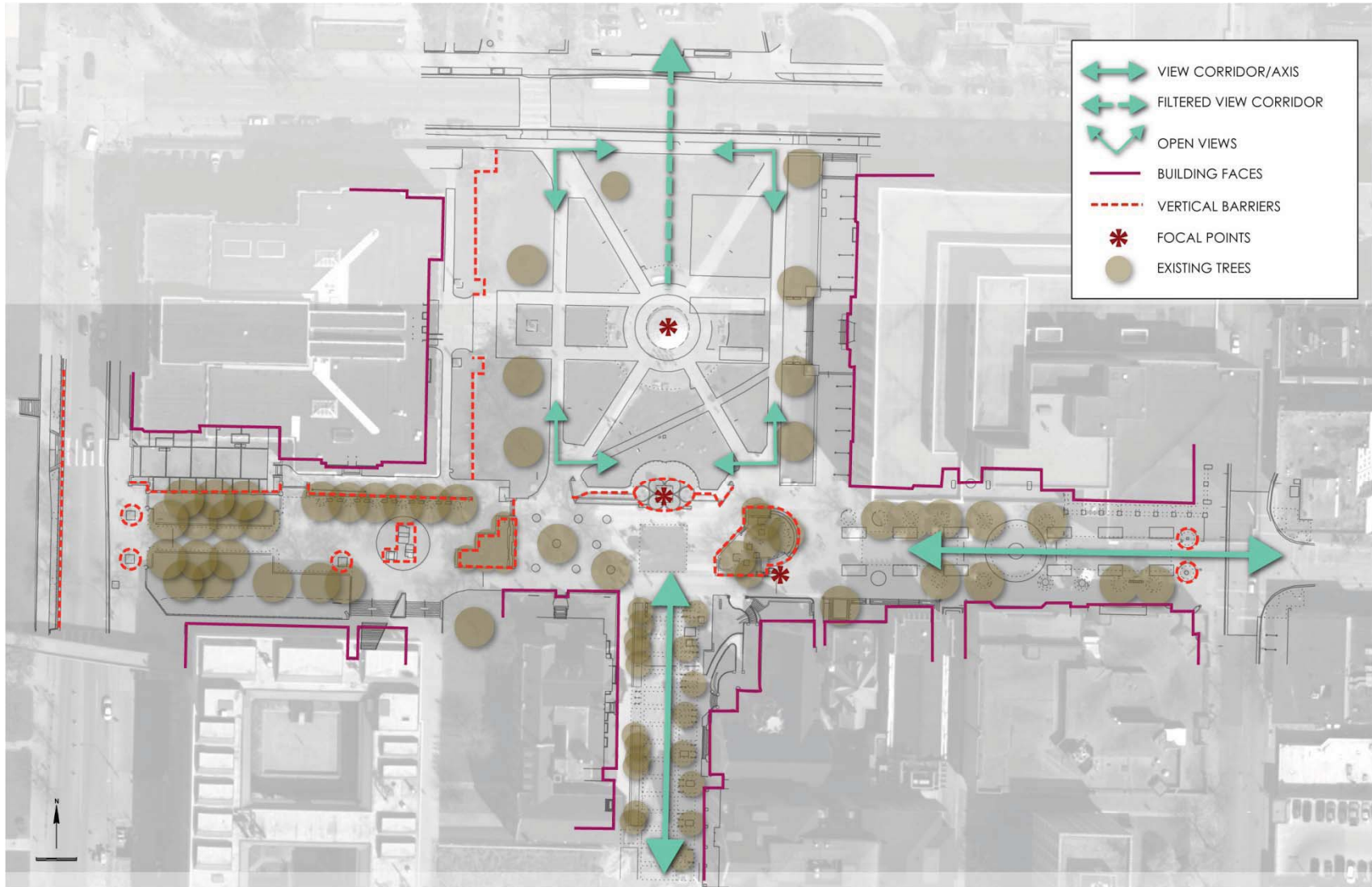


SEATING ANALYSIS





VIEWSHED ANALYSIS





Gateway (Existing)



State Street's transition to Bascom Hill abrupt, lacking visual and physical connection



The intersection of Lake and State Street does not depict the "gateway" between campus and city



Another "gateway" will be created at the intersection of East Campus Mall and Library Mall



700/800 block of State Street can serve as symbolic doorway linking campus and the city

Activity Assessment



Gateway (Precedents)



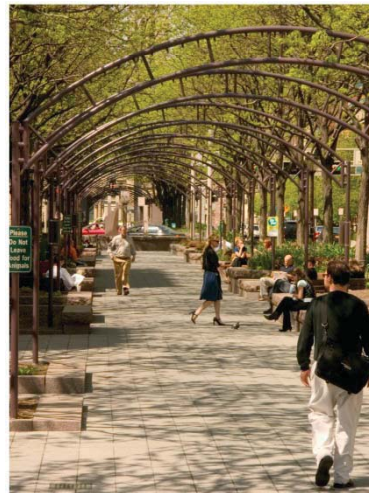
Overhead lighting celebrates gateway experience



Columns as gateway



Paving as gateway



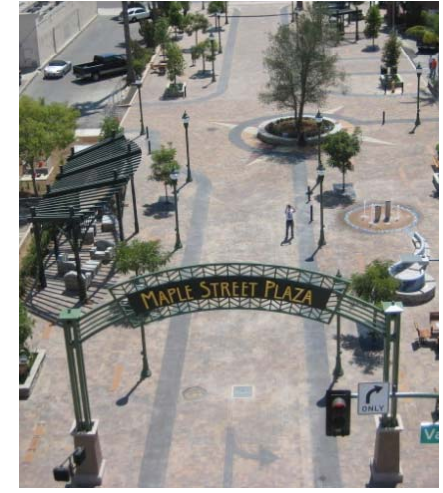
Overhead canopy as gateway



Art/sculpture as gateway



Architectural lighting as gateway



Arch as gateway

Bicycling (Existing)



Bike parking on East Campus Mall, adjacent to Library Mall



Bike Parking on Fitch Court adjacent to State Street Mall



Pedestrian walking his bike.



Biking is allowed on East Campus Mall, but not on Library Mall



Bicycling (Precedents)



Bike parking at edge of space with visitor information



Vegetated separation



Paving pattern separation



Bike parking integrated within space



Bike parking as planter



Dedicated bike path

Passing Through (Existing)



A path in Library Mall for passing through



Campus tour groups walk through East Campus Mall



Students pass through space on the path of least resistance



Pass through space between food carts

Passing Through (Precedents)



A pass through corridor with an overhead structure helping to define the space and creates human scale



Pass through spaces enhanced with overhead tree canopy and vertical elements



A pass through space that allows pause

Activity Assessment



Food Carts/Vending (Existing)



Food carts attract crowds during lunch hours in the warmer months



The existing podium is a popular spot to sit while eating



Food carts uses improvised setup for power



People sit on concrete wall/stairs to eat

Food Carts/Vending (Precedents)



Food stands in Portland integrated with vegetation



Permanent structures created for vendors



Vending can be successful throughout the year



People Watching (Existing)



People congregate at the elevated concrete podium area near food carts



Street musicians make people watching more interesting



Benches next to the Historical Society are rarely used for people watching



View from existing tower



People Watching (Precedents)



Passive people watching space created through seating, paving, and grade change



Delineation of space through plantings and paving help define passive/active uses



A variety of seating allows for passive people watching



Street performers add interest to site





Meeting Place (Existing)



The clock tower serves as a landmark for an easy meeting spot



People often meet up at the existing concrete podium



People gather on lawn at Library Mall when construction is not present



Steps in front of St. Paul are a popular meeting spot

Activity Assessment



Meeting Place (Precedents)



Landmarks serve as a easily identifiable meeting spots



Movable seating and barriers allow for flexible gathering spaces



An open lawn area is good for meeting and allows for a variety of simultaneous activities

Activity Assessment

Interactive Fountain (Existing)



Temporary memorial



Impromptu play



Spray and mist as a cooling effect



Background splashing as white sound

Activity Assessment

Interactive Fountain (Precedents)



Water terrace (Jamison Park - Portland, OR)



Sloped pool with jets (Directors Park - Portland, OR)



Mist fountain (Harvard University)



Reflecting pool (Ohio State University)



Fountain jets (Paris, France)



Touch pool (High Line, NYC)

Activity Assessment

Active/Passive Open Space (Existing)



Active edge



Passive center



Active center

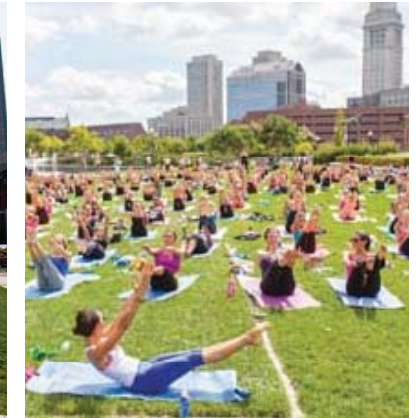


Passive edge

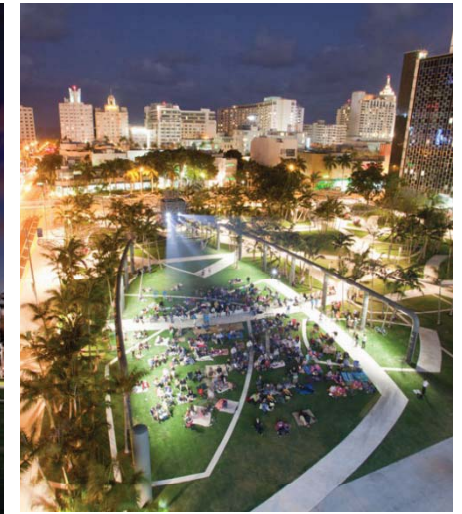
Active/Passive Open Space (Precedents)



Rose Kennedy Parkway (Boston, MA): Passive edges to active centers



Soundscape (Miami, FL): Passive edges to active centers



Small Event Gathering (Existing)



Afternoon music



Class



Late night jugglers



Bike Club fund raiser



Impromptu high-stake race

Small Event Gathering (Precedents)



Washington Square Park (NYC): Fountain caters to small year-round event stage, while edge/plaza paving functions as temporary event canvas



Rittenhouse Square (Philadelphia, PA): Paving patterns and small terraces help define smaller event areas

Large Event Gathering (Existing)



Peace rally



Presidential visit



Candle vigil



All campus party



Large Event Gathering (Precedents)



Directors Park (Portland, OR): fountain and shade structure temporarily used for concerts, dinners and festivals



Bryant Park (NYC): space allows for concerts, skating, movies and festivals

Activity Assessment



Guiding Design Principles

1. **Improve Park Street Crossing**
2. **Improve Site as a Portal:**
 - a) Integrate pedestrian and bicycle routes
 - b) Define thresholds, edge definition
 - c) Encourage/support areas for pausing and resting
3. **Enhance Site as a Destination:**
 - a) Support small and large group event gatherings
 - b) Function as a meeting place
 - c) Accommodate existing food carts and vending operations
 - d) Integrate infrastructure to support current and future needs
 - e) Identify a multi-jurisdictional programming model

