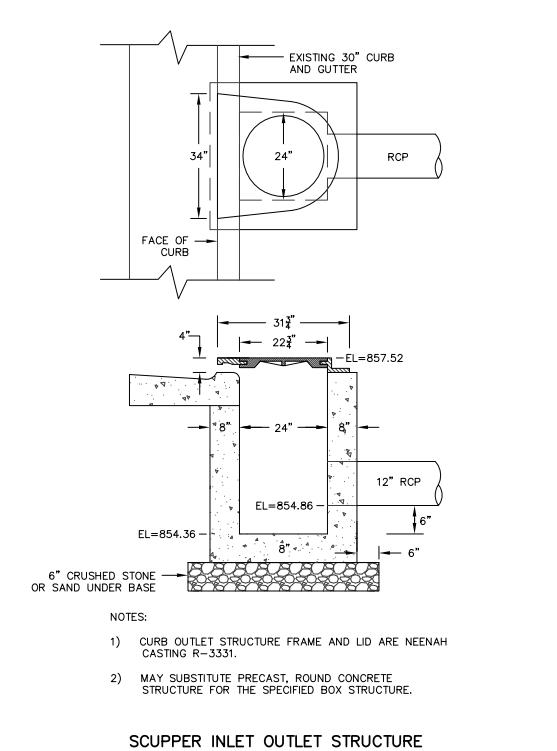


UTILITY NOTES:
 EXISTING UTILITIES SHOWN WERE OBTAINED FROM CITY OF MADISON RECORD DRAWINGS AND MARKED UTILITIES.
 THE CONTRACTOR SHALL CONTACT CITY OF MADISON UTILITIES PRIOR TO CONNECTING TO EXISTING SANITARY SEWER AND WATER MAIN.
 THE CONTRACTOR SHALL SUBMIT THE APPLICATION FOR SERVICE TO THE CITY OF MADISON WATER UTILITY TO OBTAIN THE PERMIT FOR THE WATER SERVICE CONNECTIONS.
 ALL WATER MAIN SHALL BE BURIED TO A DEPTH OF 6.5 FEET. THE DEPTH IS DEFINED AS THE DISTANCE BETWEEN THE FINISHED GRADE ELEVATION AND THE TOP OF WATER MAIN OR SERVICE.
 ALL UTILITIES SHALL BE CONSTRUCTED IN ACCORDANCE TO CITY OF MADISON STANDARD SPECIFICATIONS.
 THE CONTRACTOR SHALL VERIFY ALL UTILITY LOCATIONS, SIZES, MATERIALS, AND ELEVATIONS PRIOR TO THE START OF CONSTRUCTION. ANY DISCREPANCIES SHALL BE REPORTED TO ENGINEER.
 THE CONTRACTOR SHALL OBTAIN ALL NECESSARY SEWER CONNECTION PERMITS AND SEWER PLUGGING PERMITS PRIOR TO ANY UTILITY WORK.
 CONTRACTOR SHALL OBTAIN A PERMIT TO PLUG THE EXISTING SANITARY SEWER LATERAL THAT IS TO BE ABANDONED. FOR THE LATERAL TO BE PLUGGED THE CONTRACTOR SHALL DEPOSIT \$1,000 WITH THE CITY ENGINEER IN TWO SEPARATE CHECKS IN THE FOLLOWING AMOUNTS: (1). \$100 NON REFUNDABLE DEPOSIT FOR THE COST OF INSPECTION OF THE PLUGGING BY CITY STAFF; AND (2). \$900 FOR THE COST OF CITY CREWS TO PERFORM THE PLUGGING. IF THE CONTRACTOR ELECTS TO COMPLETE THE PLUGGING OF A LATERAL SITE AND THE PLUGGING IS INSPECTED AND APPROVED BY THE CITY ENGINEER, THE \$900 FEE SHALL BE RETURNED TO THE CONTRACTOR. THIS PERMIT APPLICATION IS AVAILABLE ONLINE AT [HTTP://WWW.CITYOFMADISON.COM/ENGINEERING/PERMITS.CFM](http://www.cityofmadison.com/engineering/permits.cfm)

GENERAL NOTES:
 ALL WORK IN THE PUBLIC RIGHT-OF-WAY SHALL BE PERFORMED BY A CITY LICENSED CONTRACTOR.
 ANY DAMAGE TO THE PAVEMENT ON NORTH FRANCES AND CONKLIN PLACE, ADJACENT TO THE DEVELOPMENT WHICH IS DAMAGED BY THE CONSTRUCTION, SHALL BE RESTORED IN ACCORDANCE WITH THE CITY OF MADISON'S PAVEMENT PATCHING CRITERIA.
 THE APPLICANT SHALL REPLACE ALL SIDEWALK AND CURB AND GUTTER WHICH ABUTS THE PROPERTY WHICH IS DAMAGED BY THE CONSTRUCTION OR ANY SIDEWALK AND CURB AND GUTTER WHICH THE CITY ENGINEER DETERMINES NEEDS TO BE REPLACED BECAUSE IT IS NOT AT A DESIRABLE GRADE REGARDLESS OF WHETHER THE CONDITION EXISTED PRIOR TO BEGINNING CONSTRUCTION.



TO OBTAIN LOCATION OF PARTICIPANTS' UNDERGROUND FACILITIES BEFORE YOU DIG IN WISCONSIN
CALL DIGGERS HOTLINE
 1-800-242-8511
 TOLL FREE
 TDD(FOR THE HEARING IMPAIRED)(800)542-2289
 WS. STATUTE 182.0175 (1974)
 REQUIRES MIN. OF 3 WORK DAYS NOTICE BEFORE YOU EXCAVATE