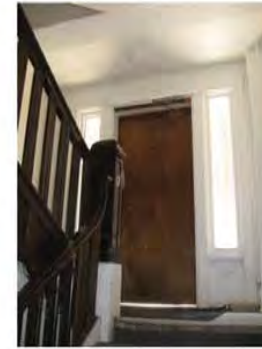






145 IOTA COURT

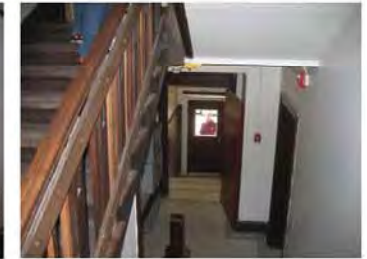




619 N HENRY



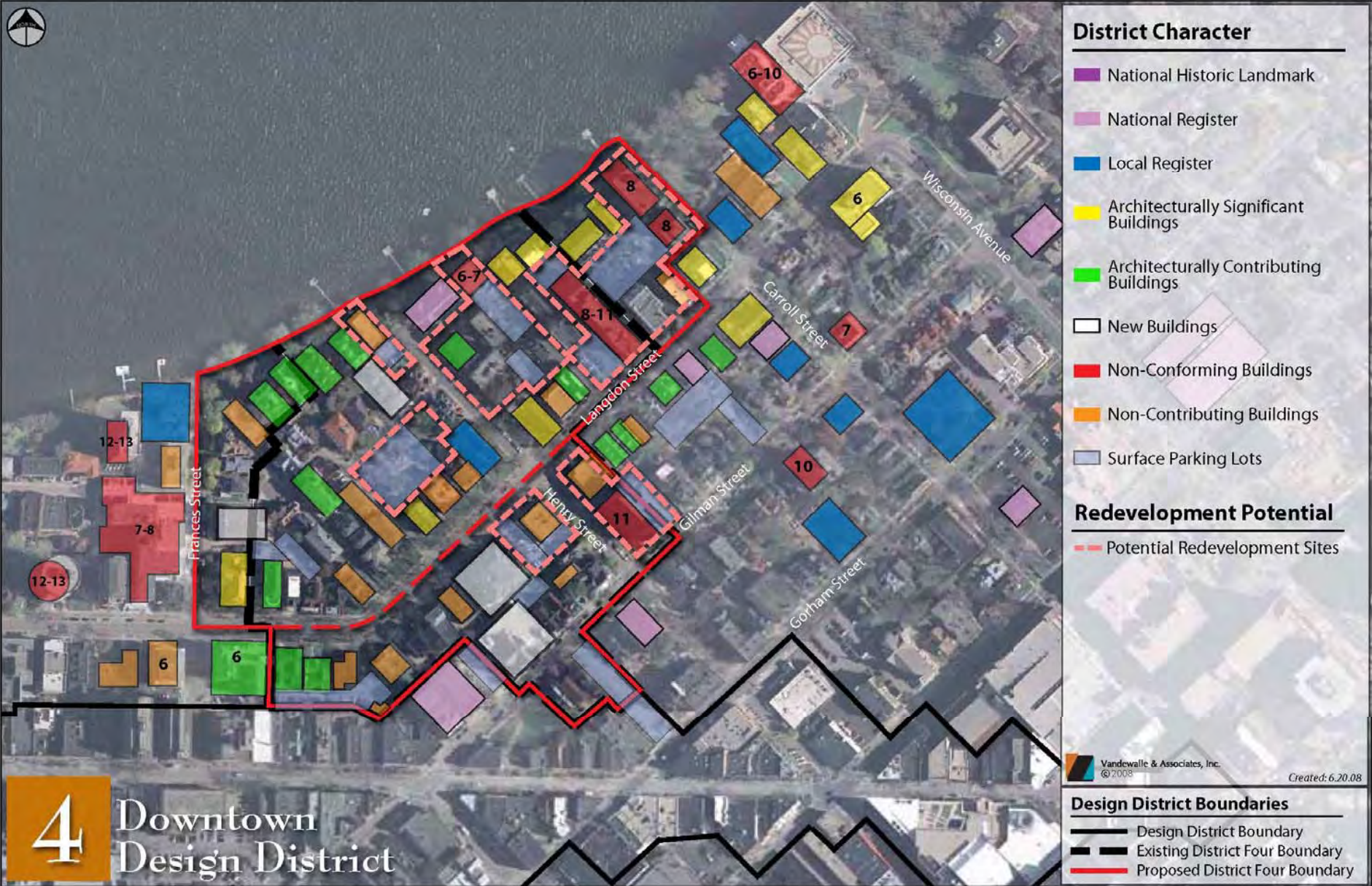
IOTA COURT PROJECT
EXISTING CONDITIONS
MADISON, WISCONSIN





IOTA COURT PROJECT
EXISTING CONDITIONS
 MADISON, WISCONSIN







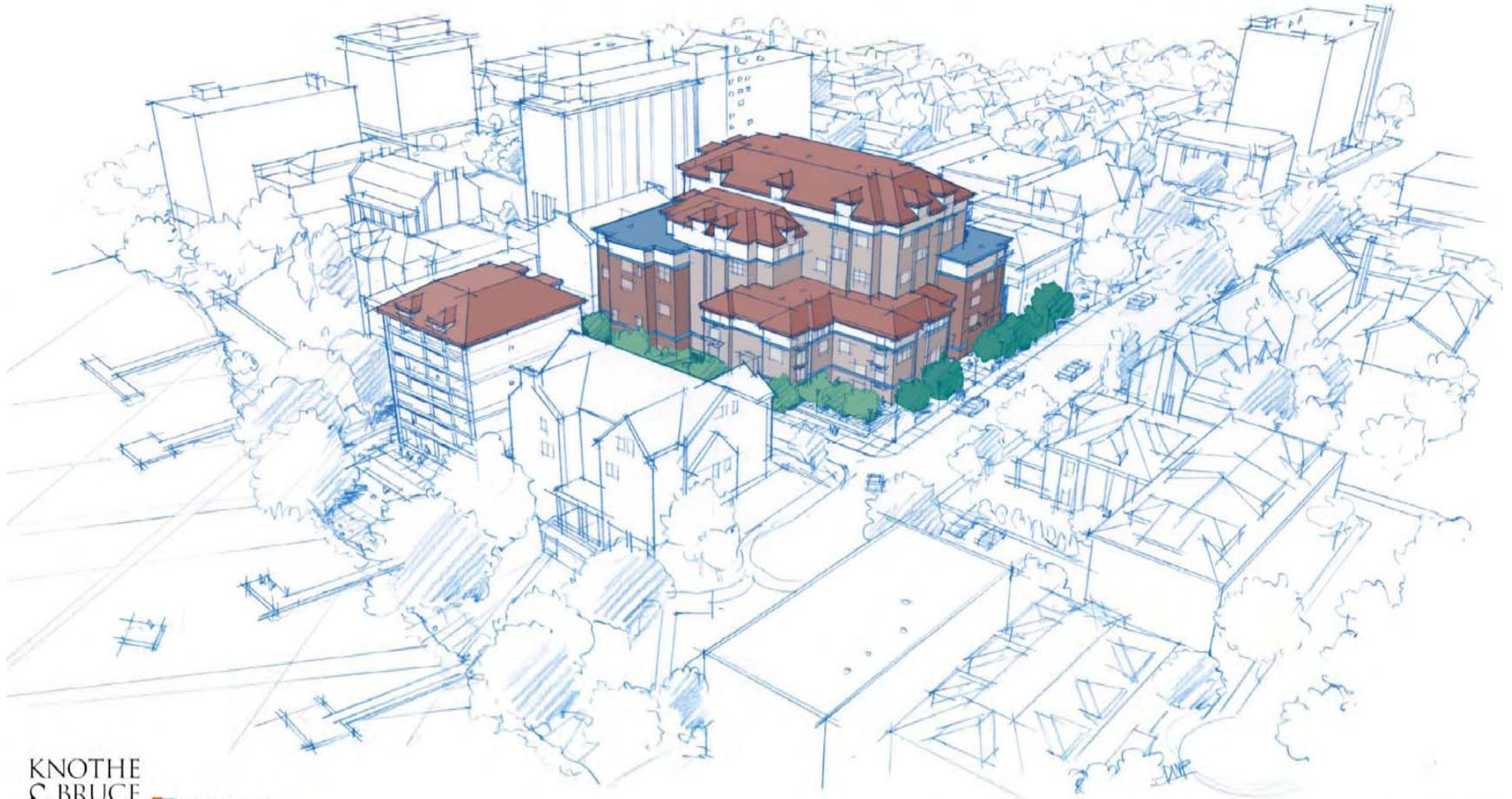
- Non-Contributing Building
- Contributing Building
- Historic District Boundary
- Bonus Height Area


 Waterfront Apartments
 Figure Ground Site Plan

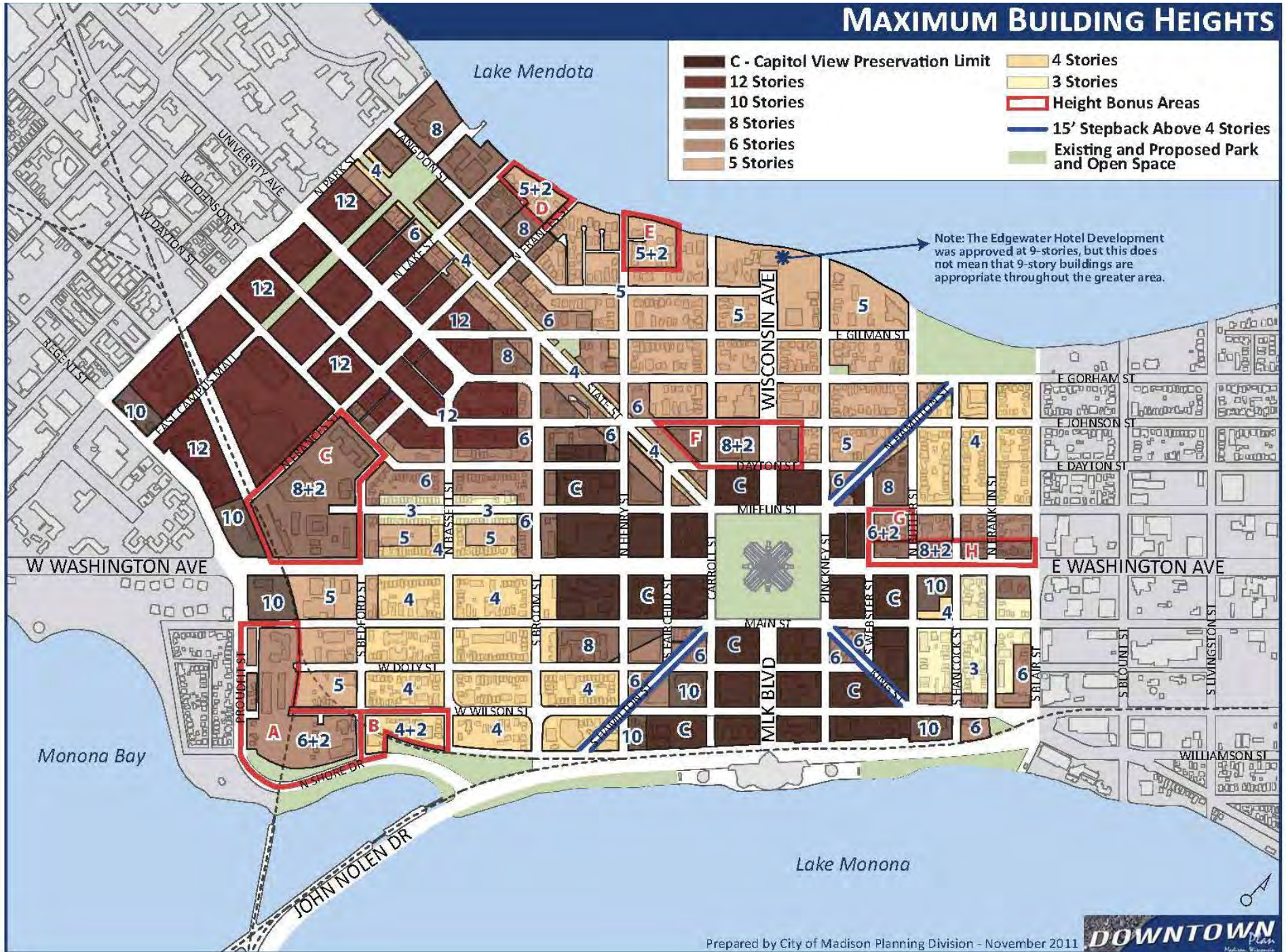
January 14, 2013
 #0804



IOTA COURT PROJECT
CONCEPT SKETCH
MADISON, WISCONSIN



MAXIMUM BUILDING HEIGHTS





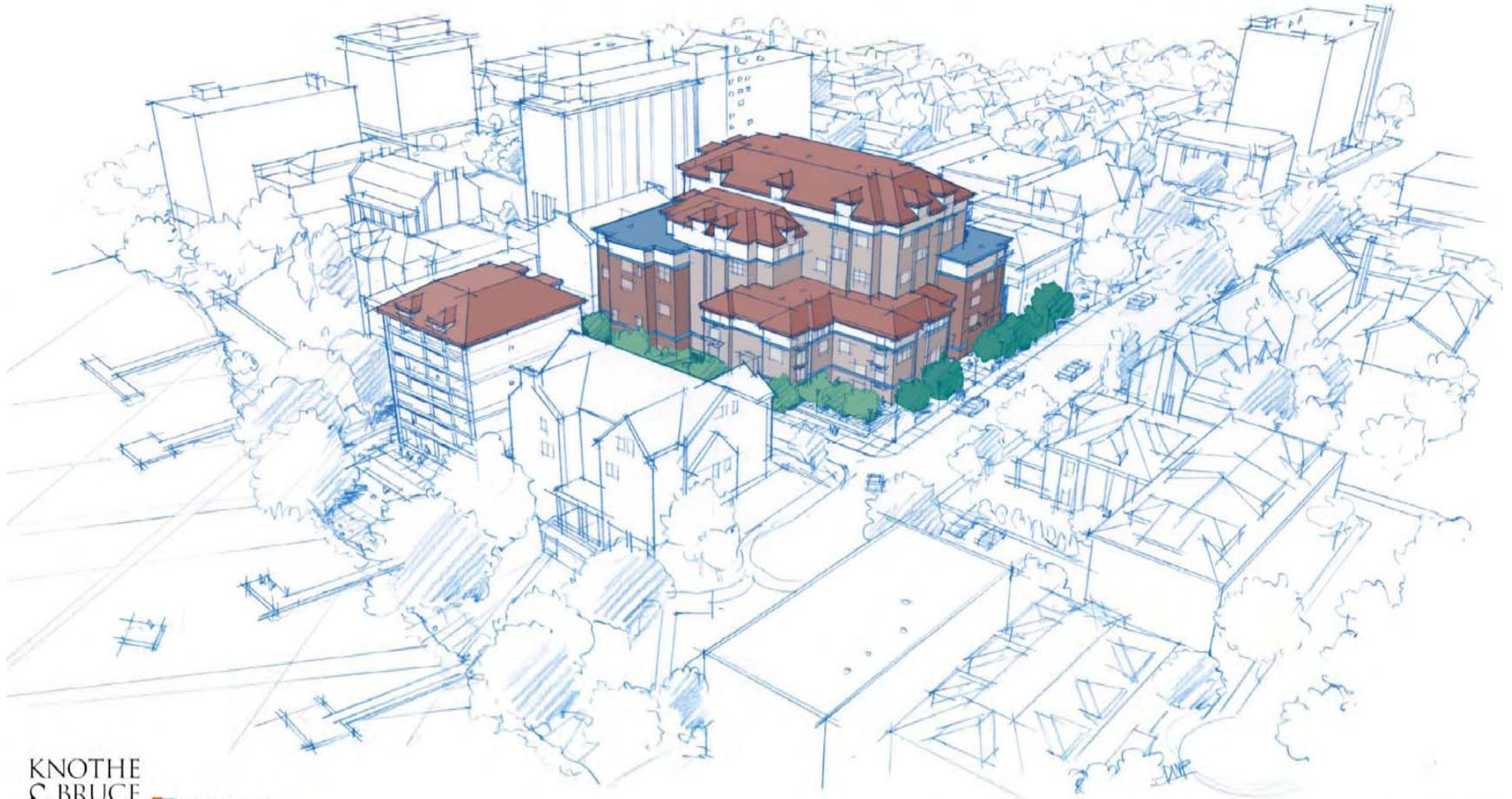
- Non-Contributing Building
- Contributing Building
- Historic District Boundary
- Bonus Height Area


 Waterfront Apartments
 Figure Ground Site Plan

January 14, 2013
 #0804



IOTA COURT PROJECT
CONCEPT SKETCH
MADISON, WISCONSIN







Project Components





ORIGINAL

ORIGINAL PLAT OF BLOCK 6

PART OF LOI 4

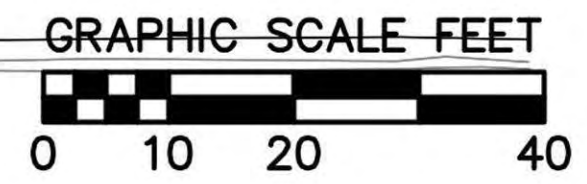
HANKS' REPLAT S.W. 82 E1 OF E 3

The Waterfront Apartments
Site Plan



January 30, 2013
#0804

KNOTHE & BRUCE
architects





PR

Langdon Mid-Block Path Concept – plan view

Consultant

Notes



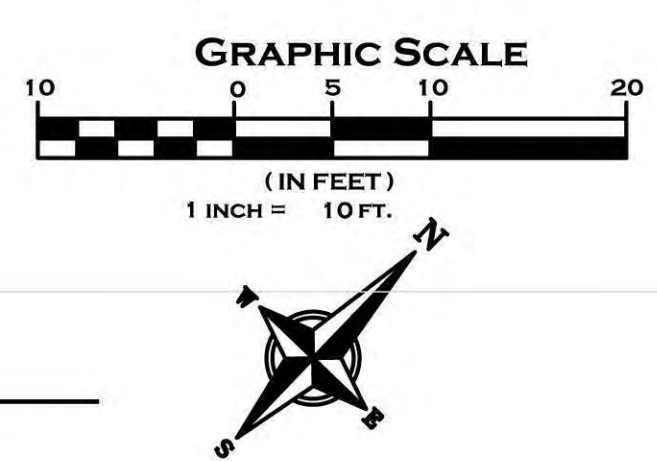
PRELIMINARY
NOT FOR CONSTRUCTION

Revisions
 Land Use Application - October 17, 2012
 Revised Land Use Drawings - January 24, 2015
 Plan Commission - February 4, 2015

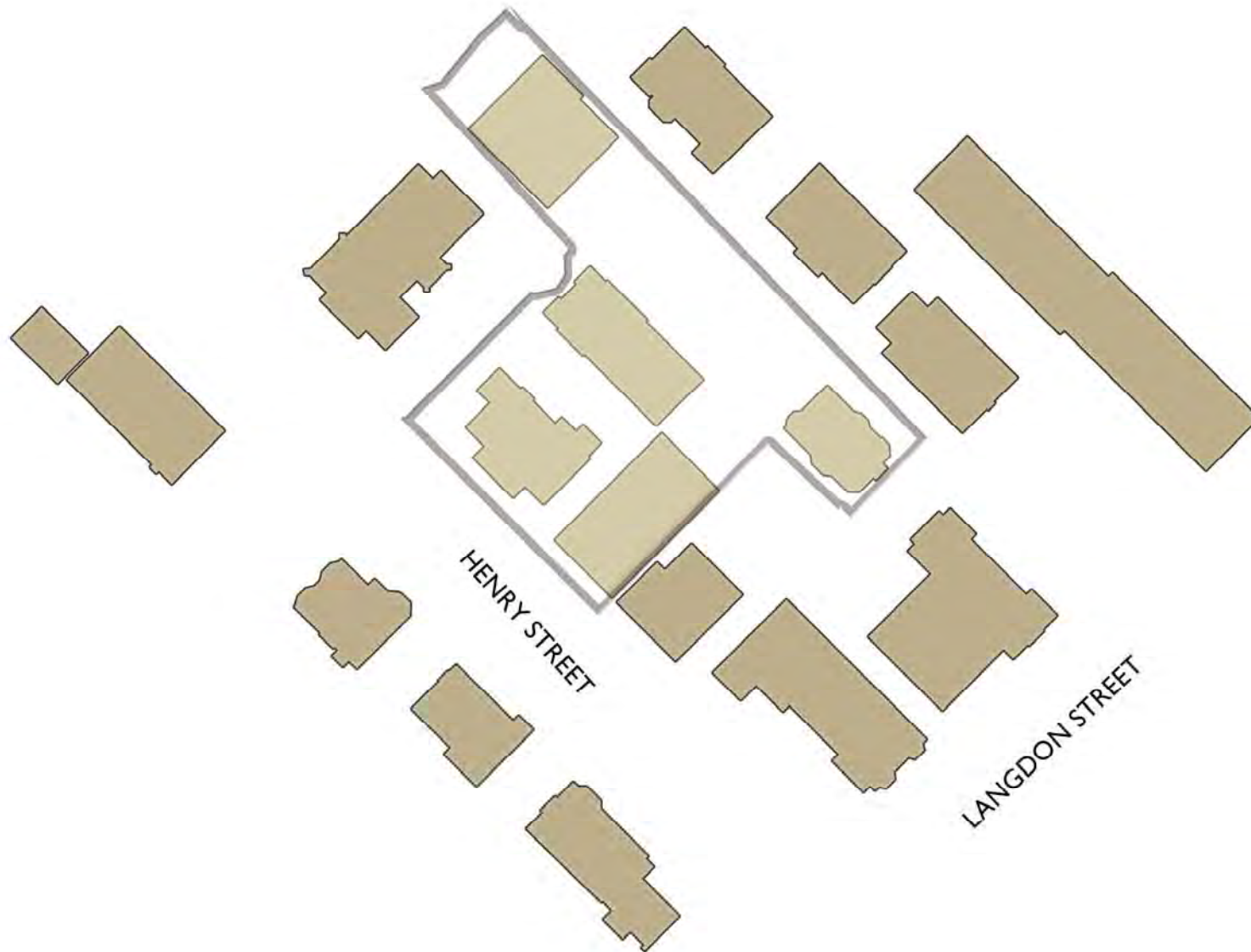
Project Title
 Houden - Iota Court

625 N. Henry St.
 Drawing Title
Landscape Plan
 Project No. 0804 Drawing No. L-1.0

Plant Key	Botanical Name	Common Name	Quantity	Size	Spec	Comments
Deciduous Shade Trees						
AFS	<i>Acer x freemanii</i> 'Sienna'	Sienna Glen Freeman Maple	3	2" Cal	B&B	Single, straight leader, match specimens, branching shall start at 5'-0" min.
GDE	<i>Gymnocladus dioica</i> 'Espresso'	Espresso Kentucky Coffeetree	2	3" Cal	B&B	Other seedless variety acceptable
PC	<i>Prunus celtica</i> 'Cleveland Select'	Cleveland Select Pear	2	2" Cal	B&B	Single, straight leader, match specimens, branching shall start at 5'-0" min.
Deciduous Ornamental Trees						
ALS	<i>Amelanchier laevis</i> 'JFS-Abt'	Spring Flurry Serviceberry	6	10" Ht	B&B	Single leader
Evergreen Shrubs						
Cpf	<i>Chamaecyparis paifora</i> 'Filtera'	Threadleaf Falsecypress	8	30" Spr	Cort. B&B	5 Gal. min. Space 5' - 6' O.C. Prune to maintain at 7' ht.
Tme	<i>Taxus x media</i> 'Everlow'	Everlow Yew	13	24" Spr	Cort. B&B	5 Gal. min. Space 4'-1/2" - 5' O.C. Prune minimally - maintain natural shape
Deciduous Shrubs						
Ami	<i>Aronia melanocarpa</i> 'Tropics Beauty'	Tropics Beauty Aronia	17	18" Ht	Cort.	Space 2 - 3-1/2' O.C.
Dgn	<i>Desmodium illinoense</i> 'Biko'	Biko Slender Desmodium	26	18" Ht	Cort.	Space 2' O.C.
Fgb	<i>Fothergilla gardenii</i> 'Beaver Creek'	Beaver Creek Dwarf Fothergilla	15	18" Ht	Cort.	Space 2' O.C.
Smp	<i>Syringa meyeri</i> 'Palton'	Meyer Lilac	4	3' Ht	Cort.	5 Gal. min. Space 5' O.C.
Perennials/Grasses/Groundcovers						
als	<i>Allium tanguticum</i> 'Summer Beauty'	Summer Beauty Allium	13	1 Qt	Cort.	Space 2' O.C.
bbs	<i>Rapista x bicolor</i> 'Starlike Prairiebloss'	Starlike Prairiebloss Wild Indigo	12	1 Gal	Cort.	Space 2' O.C.
dc	<i>Diachasma repens</i>	Tufted Hair Grass	24	1 Gal	Cort.	Space 2' O.C.
gcb	<i>Geranium carolinianense</i> 'Blokow'	Blokow Cranebill	27	1 Qt	Cort.	Space 2' O.C.
msa	<i>Miscanthus sinensis</i> 'Gracillimus'	Maiden Grass	12	3 Gal	Cort.	Space 3-1/2' O.C.
mcm	<i>Molinia caerulea</i> 'Moorflamme'	Moorflamme Purple Moor Grass	13	1 Qt	Cort.	Space 24" - 30" O.C. 'Moorheex' acceptable
pvn	<i>Panicum virgatum</i> 'Northwind'	Northwind Switch Grass	34	2 Gal	Cort.	Space 2 - 2-1/2' O.C.
saf	<i>Sedum 'Autumn Fire'</i>	Autumn Fire Sedum	22	1 Qt	Cort.	Space 24" O.C.
sa	<i>Sesleria autumnalis</i>	Autumn Moor Grass	78	1 Qt	Cort.	Space 24" O.C.



PLANTING PLAN

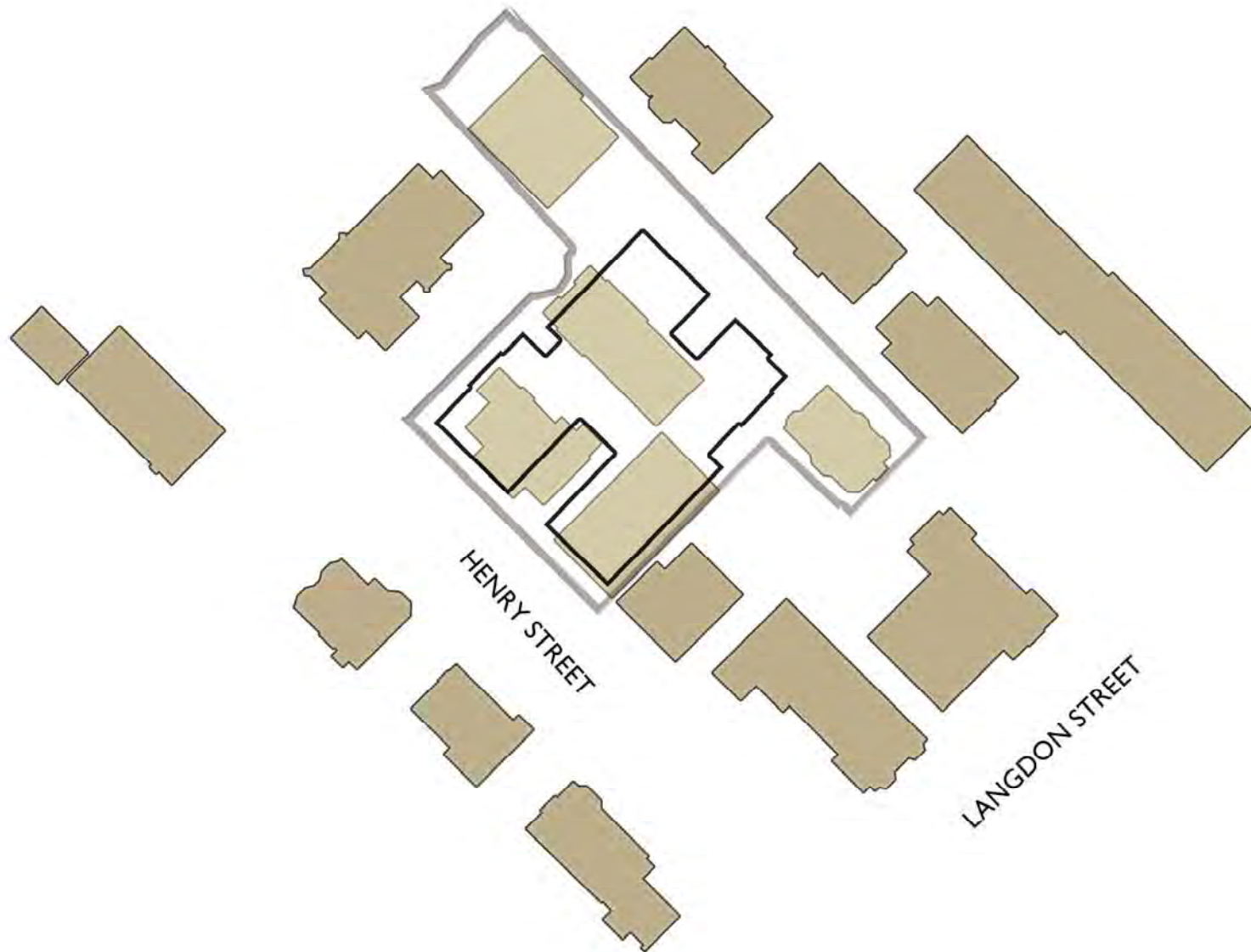


WATERFRONT

Site Plan

February 4, 2013
#0804

KNOTHE
BRUCE
& architects



WATERFRONT

Site Plan

February 4, 2013
#0804

KNOTHE
BRUCE
& architects

