

KIERAN TIMBERLAKE

# Music Hall Renovation + Addition Phase I

University of Wisconsin-Madison

General Update

Historic Preservation

Site Planning

Interior Planning



# Introduction Who We Are

## KieranTimberlake

Founded in 1984, KieranTimberlake brings together the experience and talents of roughly 90 professionals of diverse backgrounds and abilities in a practice that is recognized worldwide with special expertise in education, government, arts and culture, civic, and residential projects.



**Stephen Kieran, FAIA**  
Founding Principal



**Jason Smith, FAIA**  
Senior Principal



**Tim Peters, AIA**  
Principal



**Ryan Wall, AIA**  
Associate

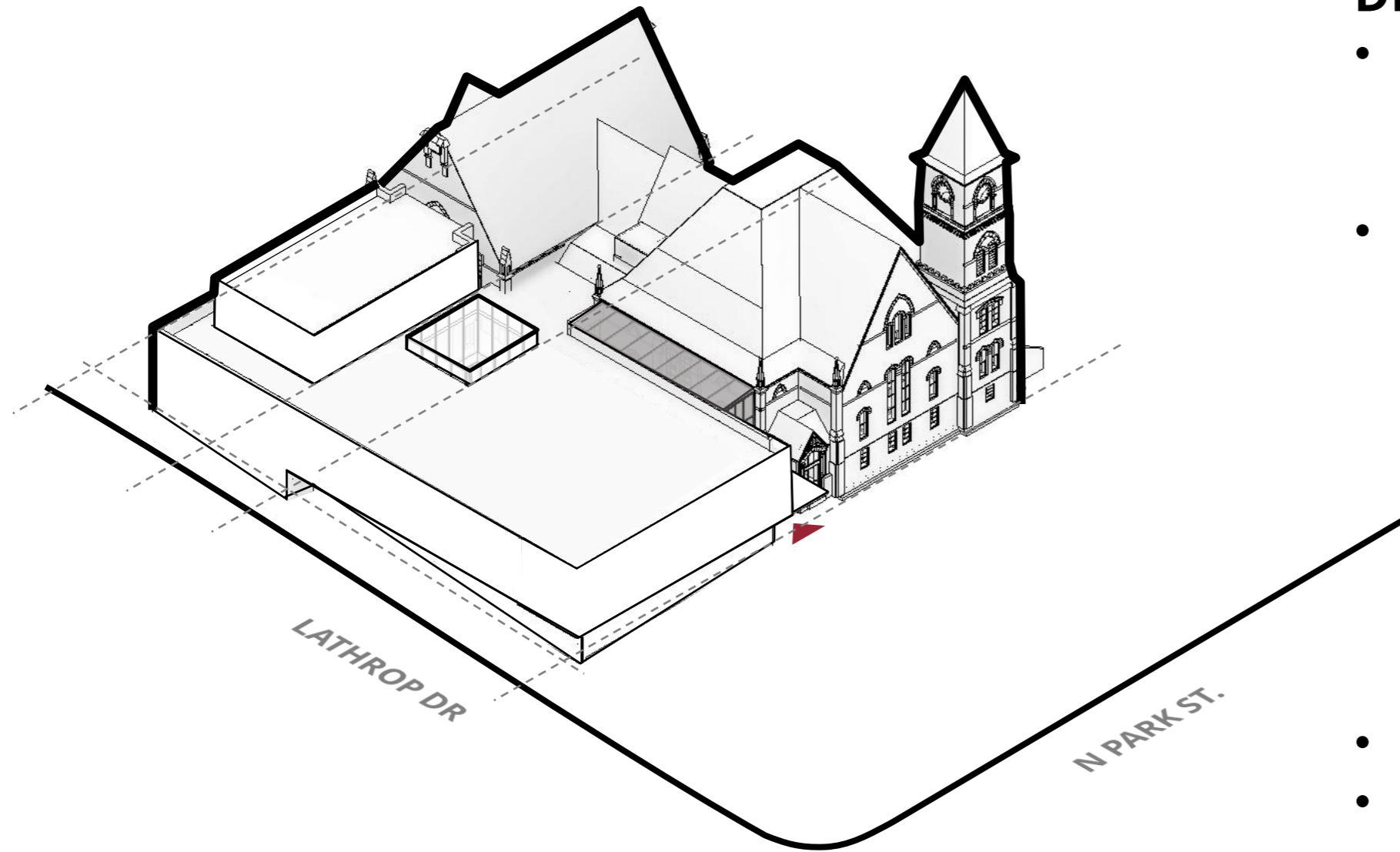
# Introduction Project Vision & Goals

A new home for the La Follette School of Public Affairs will embody democratic ideals, balance public access with departmental needs, and create welcoming, flexible environments for students, faculty, and the community. By adaptively reusing Music Hall, the design will honor the past while providing bright, functional, and future-ready spaces that foster connection, collaboration, and the Wisconsin Idea.

- Physically Embody the Identity of the La Follette School
- Engage the Community at Multiple Scales
- Balance Public Access with LFS Needs
- Create Spaces Where People Will Want to Stay
- Respect the Past while Designing for the Future



# Introduction What you saw / What we heard



## DRB review September 2025

- General support of the direction of design, including planning, circulation, and massing
- Inquiries:
  - Lathrop Drive massing, sidewalk, loading, accessible parking, etc.
  - Size and scale of interior courtyard
  - Massing interface refinements
  - Level of addition prominence on Park Street side and relationship to Music Hall facade

## JCAC review October 2025

- WHS package submitted December 2025

# Introduction Schedule

The project is currently in the Design Development phase. It includes two construction phases: Phase 1 will include the restoration and renovation of Music Hall. Phase 2 is expected to include the addition.

| Design Schedule |                           |
|-----------------|---------------------------|
| March 2025      | Project Start             |
| November 2025   | Schematic Design Complete |
| February 2026   | Board of Regents Approval |
| Fall 2026       | Design Phase Complete     |

| WEPA Schedule |                  |
|---------------|------------------|
| 10/30/2025    | Kick-Off Meeting |
| 1/13/2026     | Draft EIA        |
| 2/3/2026      | Draft EIA PIM    |
| 2/10/2026     | Final EIA        |

| Tentative Construction Schedule |                               |
|---------------------------------|-------------------------------|
| Spring 2027                     | Phase 1 Construction Start    |
| Summer 2029                     | Phase 1 Construction Complete |
| TBD                             | Phase 2 Construction Start    |
| TBD                             | Phase 2 Construction Complete |

# Program Phase I & Phase II

Phase I



28,134 GSF  
13,346 ASF

Phase II



28,179 GSF  
12,981 ASF



# Sustainability Summary

## Carbon

- Energy modeling and efficiency improvements for reduced pEUI
- On-Site Renewable Energy - Solar investigation (Phase 2)
- Plan for future campus decarbonization
- Lifecycle Cost Analysis to reduce embodied carbon emissions
  - Building renewal
  - Addition structural system selection (Phase 2)

## Water

- Planning for stormwater quality improvements and runoff reductions
- Reduce or eliminate irrigation (Phase 2)
- Low flow plumbing fixtures

## Ecology

- Native landscaping to expand local biodiversity
- Green roof habitat (Phase 2)

## Materials

- Avoid chemicals of concern and labor exploitation in material selection
- Use durable and natural materials
- Emphasize existing material reuse

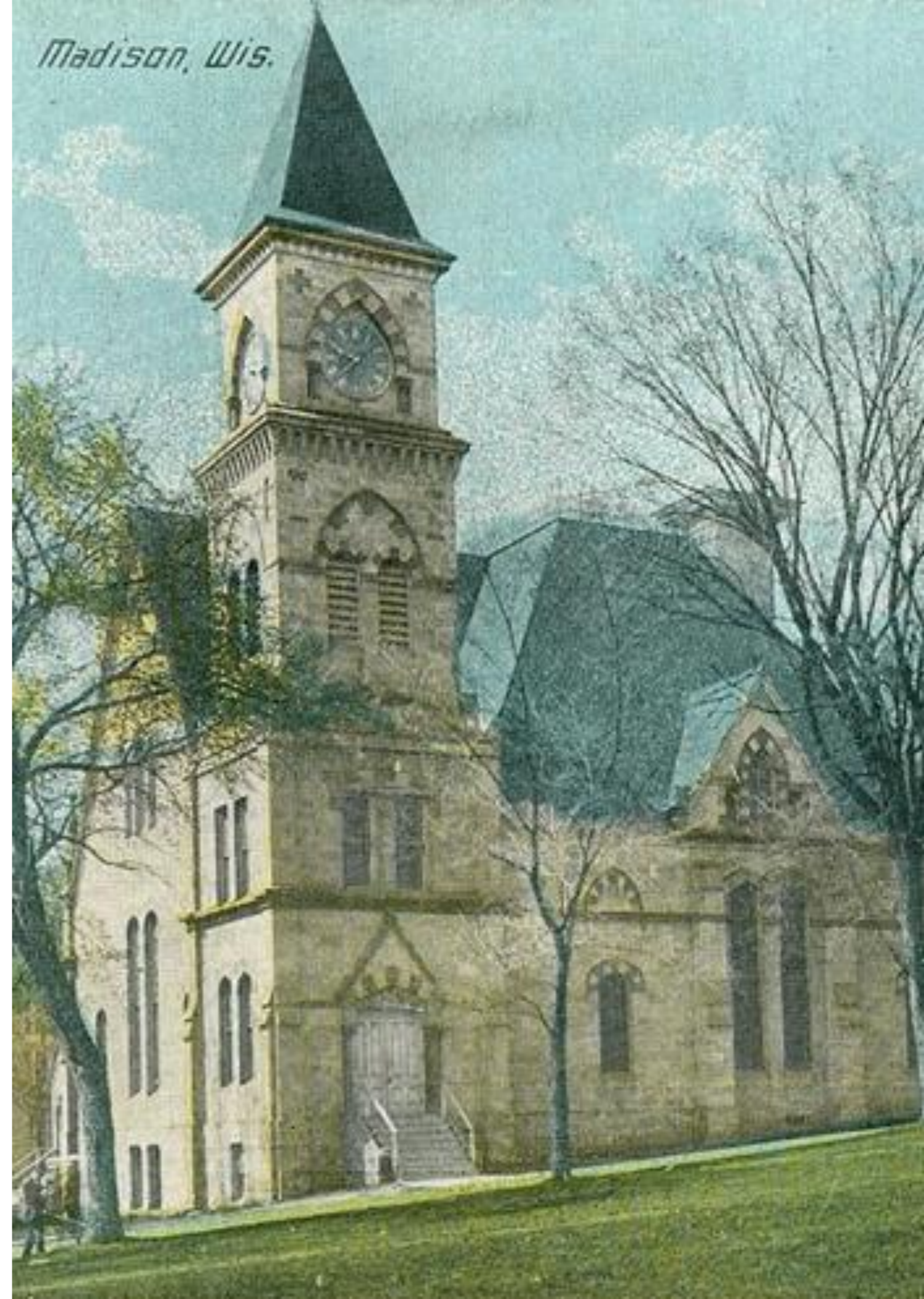
## People

- Create inclusive, active, and flexible spaces
- Stakeholder engagement
- Design for resilience in a warming climate

# Preservation Goals

The project aims to restore the building's historic character – inside and out – by preserving its prominent façades and celebrating key interior features and spatial configurations. At the same time, it will support the La Follette School's future vision – **restoration efforts must be balanced to optimize programmatic function, human experience, and judicious use of project resources.**

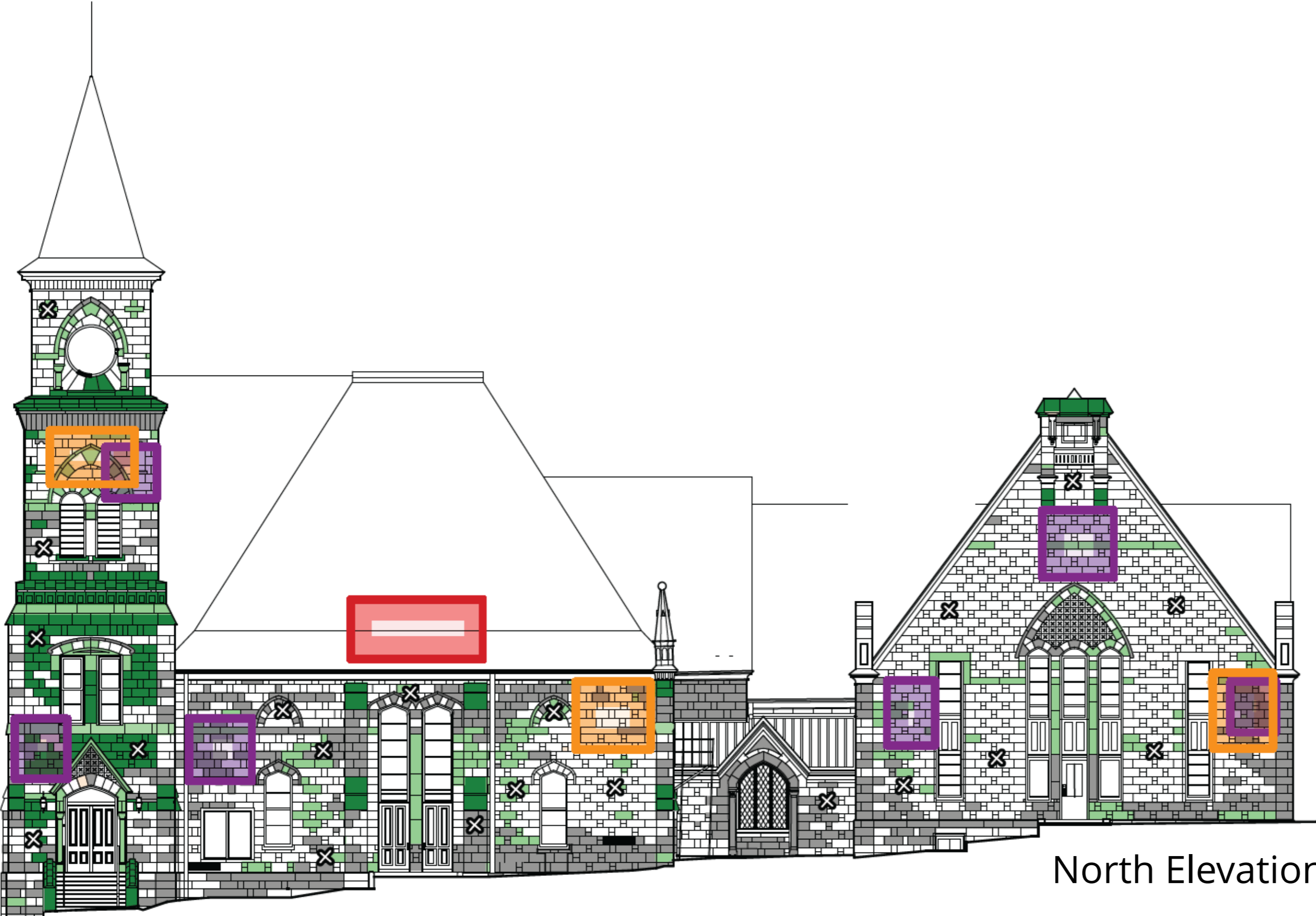
- **Return the historic building to its original beauty and form.** Preserve the remaining exterior historic fabric and restore key modified or missing elements to the greatest extent possible.
- **Support the programmatic function and future vision of LFS.**
- Restore and celebrate key historic interior fabric, especially in the Assembly Hall space.
- **Responsibly manage project resources** by limiting future unforeseen conditions with thorough **exploratory work**, and by **prioritizing restoration scope that enhances the program and user experience.**



# Exploratory Work



# Sample Exterior Exploration Locations



BORESCOPE

SURFACE PENETRATING RADAR (SPR)

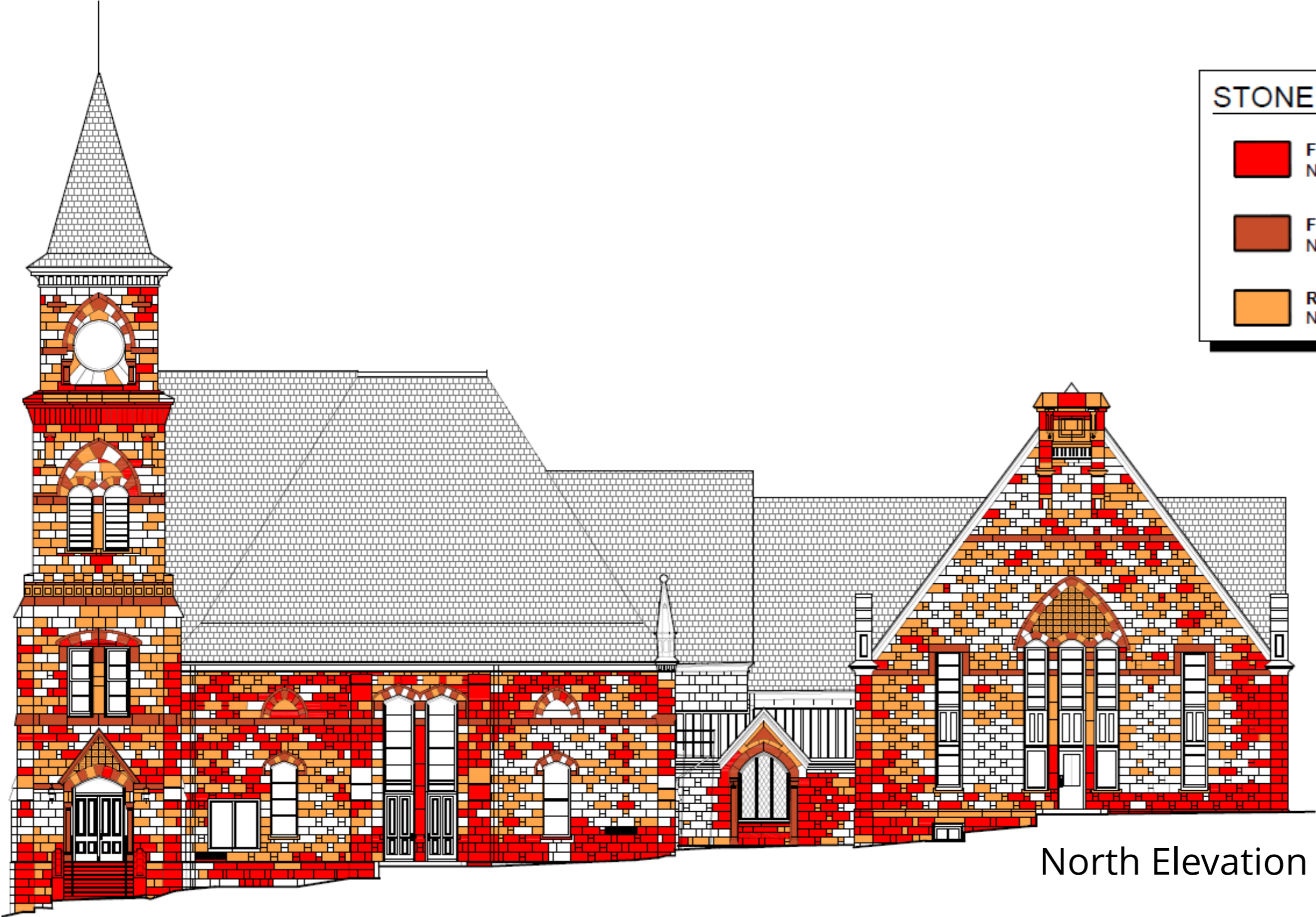
WALL OPENING

ROOF OPENING




EXPECTED STONE REPLACEMENT

North Elevation

# Stone Repair and Replacement



**STONE COLOR DESIGNATION KEY:**

-  **FULL REPLACEMENT (BUFF SANDSTONE)**  
NORTH ELEVATION TOTAL: 1,160sf
-  **FULL REPLACEMENT (RED SANDSTONE)**  
NORTH ELEVATION TOTAL: 315sf
-  **REPAIR SANDSTONE (IN-SITU)**  
NORTH ELEVATION TOTAL: 1,075sf

North Elevation

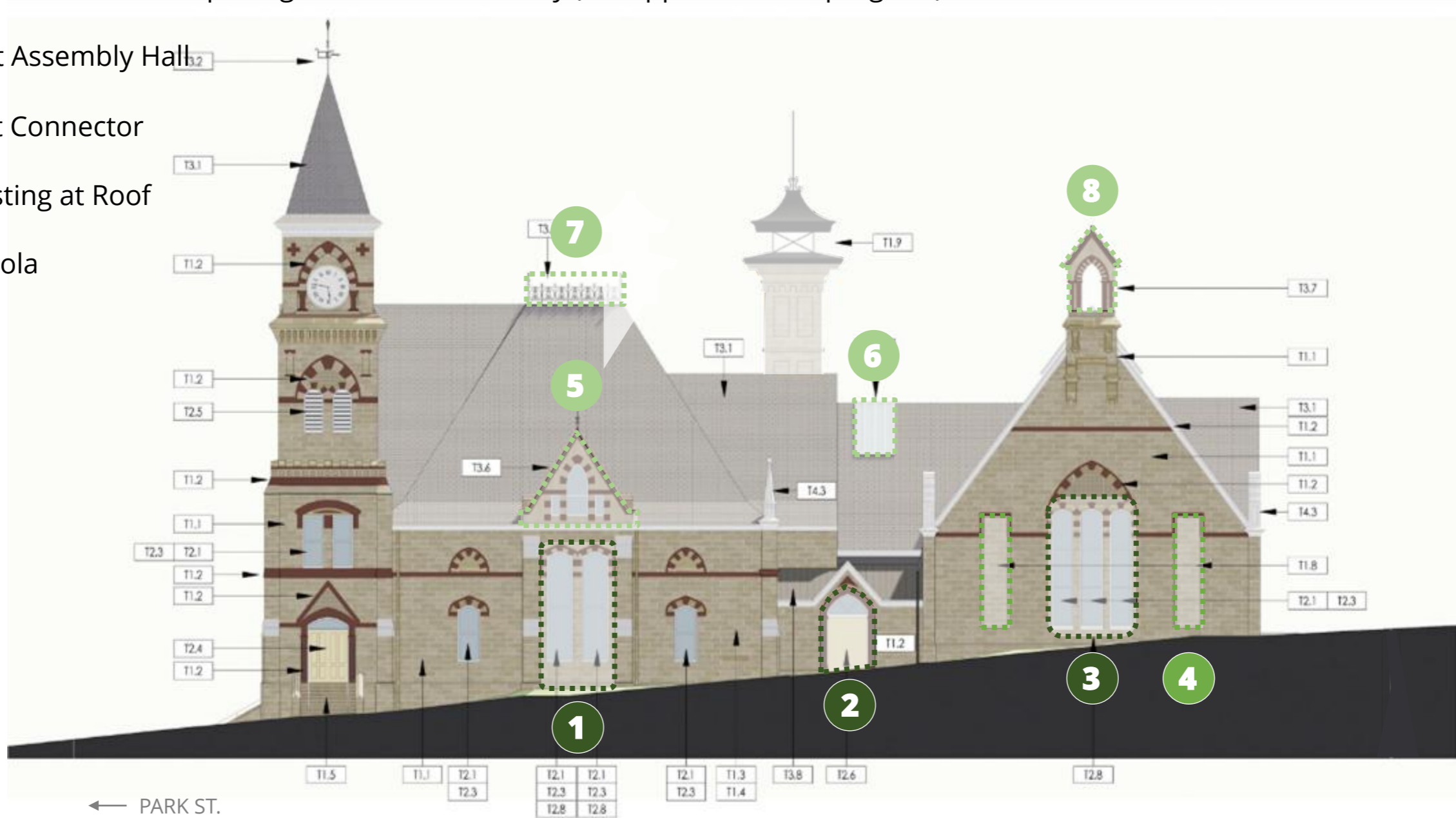
# Historic Fabric Exterior General

- **Stone Replacement**
  - Replace red sandstone throughout
- **Stone Restoration/Replacement**
  - Restore buff sandstone (replace stone where failure has been identified)
  - Clean throughout; Repoint and inject grout where identified by exploratory work
- **Window & Door Restoration**
  - Restore remaining historic windows & doors; reconstruct in kind where openings have been modified, while adding insulated glazing units where possible
  - Weatherstrip and seal to minimize infiltration/improve performance; paint; remove aluminum storms
- **Roof**
  - Replace roofing material
  - Evaluate re-creation of roof ornaments & metal cresting previously removed
- **Exterior Metal Repair & Restoration**
  - Repair metal finials & rebuild gutters
  - Repaint metal cornice
- **Remove non-historic fire escapes**
- **Restore clock mechanism & face**
- **Paint all exterior trim**

# Historic Fabric Exterior North Elevation Summary

## Proposed

- 1 Restoration:** Windows at Assembly Hall (currently doors)
- 2 Restoration:** Entry at Connector (currently window)
- 3 Restoration:** Central windows at Library (currently door in central bay)
- 4 Rehabilitation:** Non-original side window openings to remain at Library (to support interior program)
- \* **5 Reconstruction:** Dormer at Assembly Hall
- \* **6 Reconstruction:** Skylight at Connector
- \* **7 Reconstruction:** Metal crestring at Roof
- \* **8 Reconstruction:** Stone cupola



**KEY**

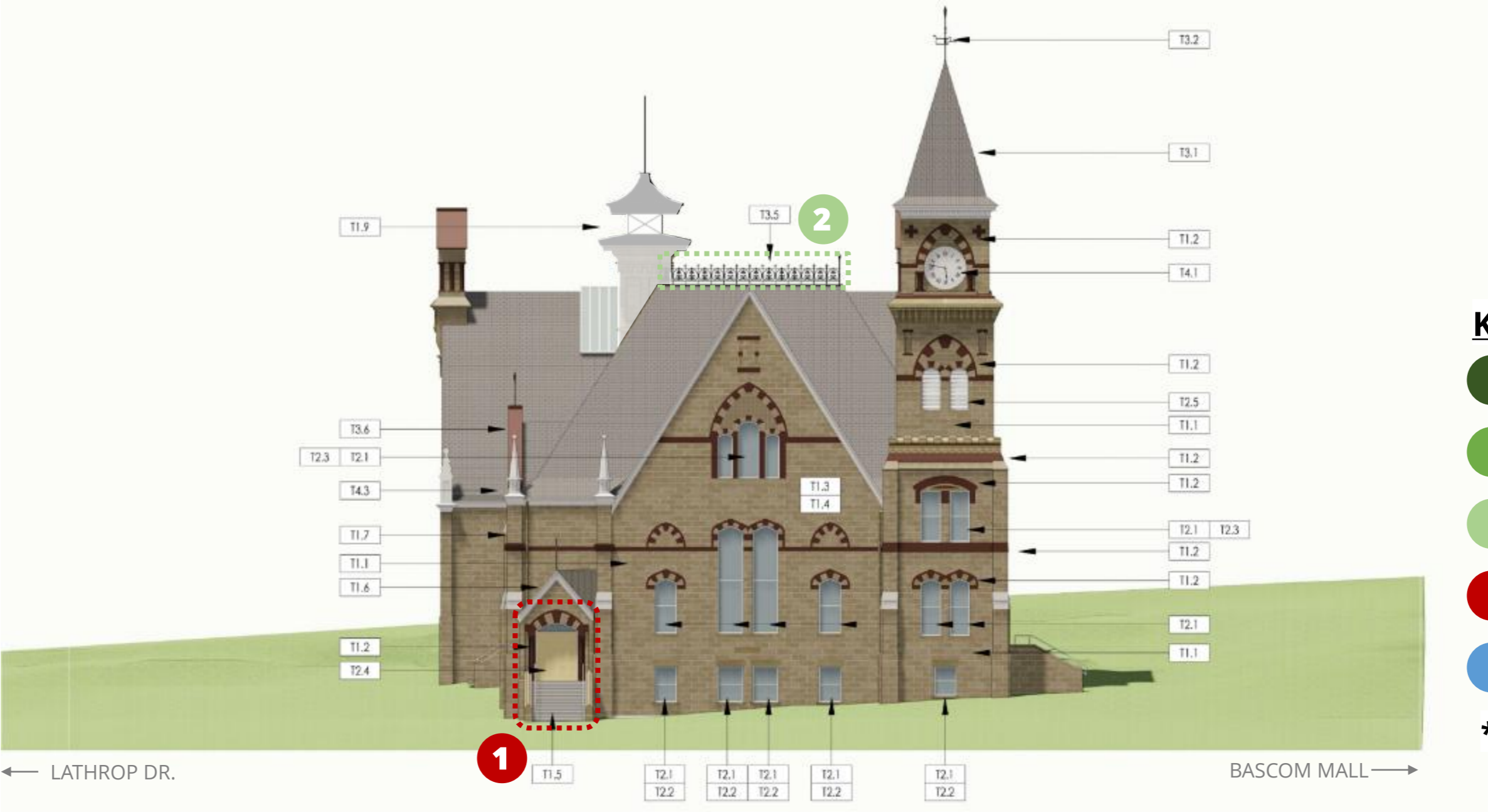
- RESTORATION
- REHABILITATION
- RECONSTRUCTION
- NOT RECONSTRUCTED
- NEW ELEMENT
- \* IN DESIGN/COST CONSIDERATION

# Historic Fabric Exterior East Elevation Summary

## Proposed

**1 Not Reconstructed:** Southeast vestibule no longer an entry; conversion to accessible entry, removal of existing stairs

\* **2 Reconstruction:** Metal cresting at Roof

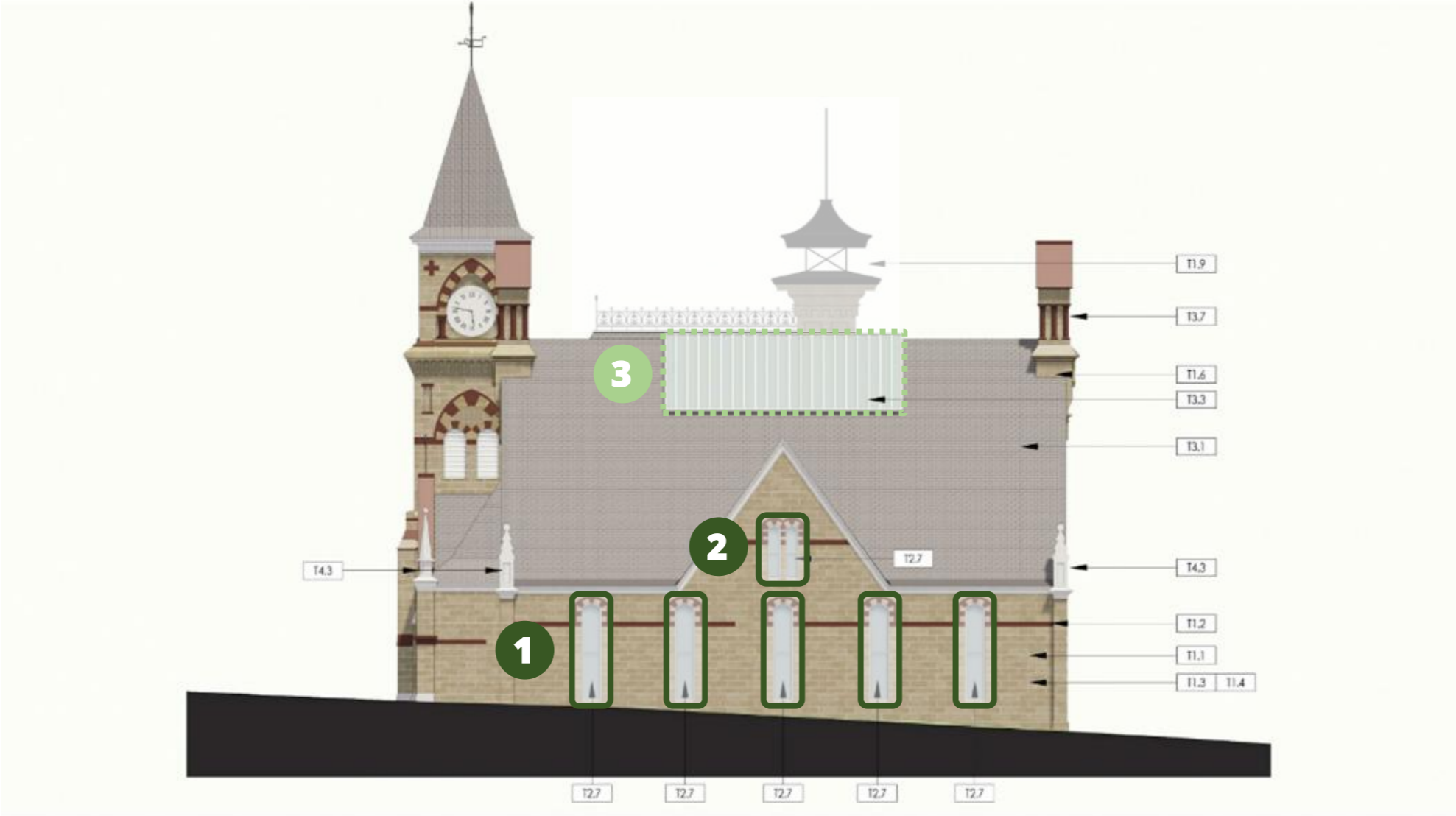


- KEY**
- RESTORATION
  - REHABILITATION
  - RECONSTRUCTION
  - NOT RECONSTRUCTED
  - NEW ELEMENT
  - \* IN DESIGN/COST CONSIDERATION

# Historic Fabric Exterior West Elevation Summary

## Proposed

- 1 Restoration:** Window Opening Quantity & Configuration
- 2 Restoration:** Windows at Library L2
- \* **3 Reconstruction:** Skylight at Library



← BASCOM MALL

LATHROP DR. →

- KEY**
- RESTORATION
  - REHABILITATION
  - RECONSTRUCTION
  - NOT RECONSTRUCTED
  - NEW ELEMENT
  - \* IN DESIGN/COST CONSIDERATION



# Site Plan

## Phase I Scope

PERMANENT LANDSCAPE AT BASCOM FRONTAGE AND AT NEW ENTRANCE

PERMANENT LANDSCAPE AT WEST SIDE OF BUILDING

NO CHANGE TO EXISTING SOUTH LANDSCAPE AND PEDESTRIAN / VEHICULAR PATHS



MINOR SITE IMPROVEMENTS WHERE DISTURBED BY PHASE I CONSTRUCTION

EAST LAWN SCOPE LIMITED TO NEW PATHS

INTERIM LANDSCAPE AT LEVEL 0 ENTRY AREA

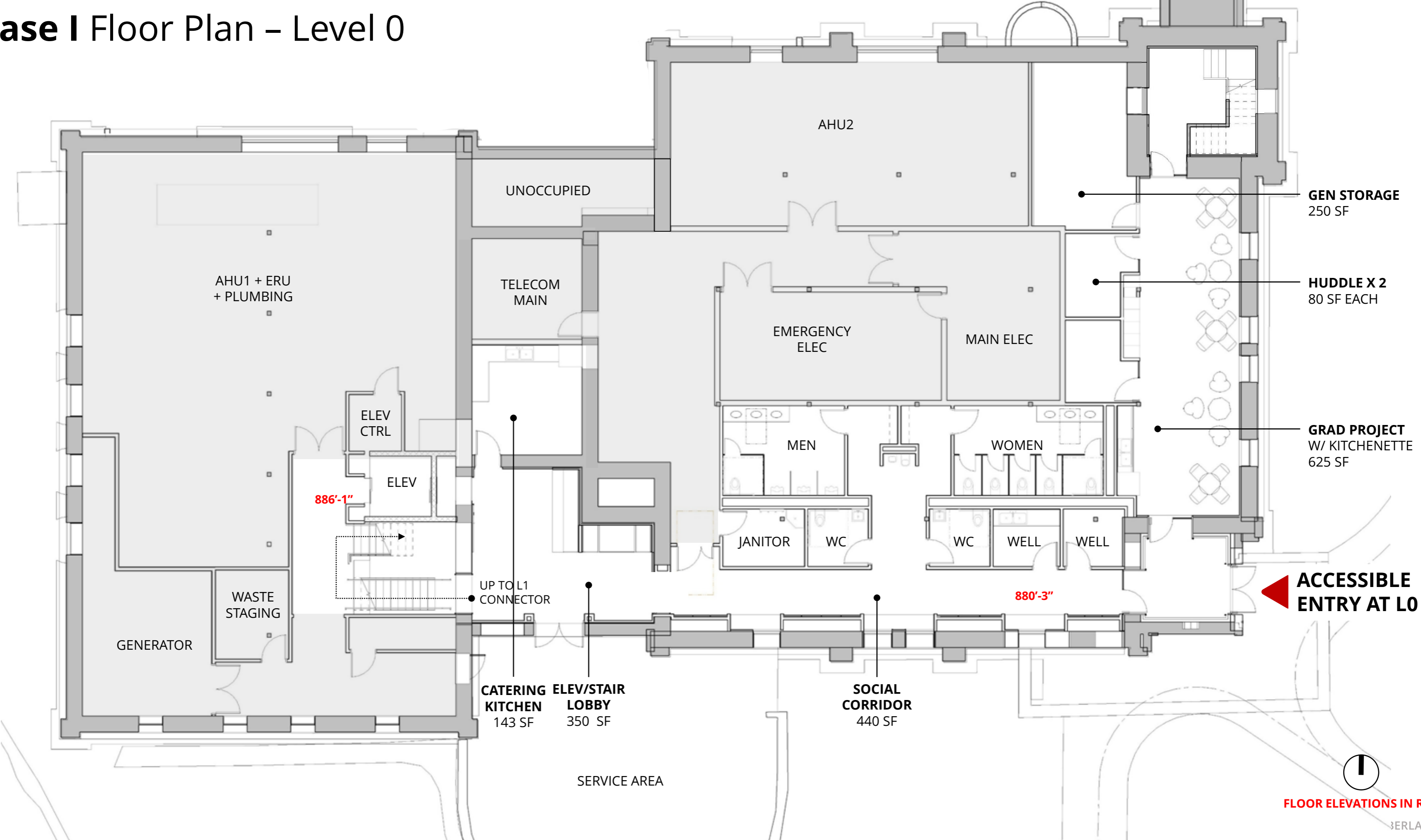
AREA OF SITE DISTURBANCE ANTICIPATED WITH PHASE II

# Site Plan

## Phase I Scope



# Phase I Floor Plan - Level 0



FLOOR ELEVATIONS IN RED

# Phase I Floor Plan - Level 1

**BASCOM ENTRY**



**OFFICE - SHARED**  
180 SF

**HUDDLE**  
125 SF

**OFFICE - SHARED**  
180 SF

**OFFICE**  
110 SF

**OPEN OFFICE**  
5 WORKSTATIONS

**OFFICE**  
110 SF

**OFFICE**  
110 SF

**OFFICE - SHARED**  
180 SF

**OFFICE - SHARED**  
160 SF

+/- 896'-0"

UP TO L2

MECH

891'-4 1/2"

**CONNECTOR LOBBY**

UP TO LFS SUITE

ELEV

UP TO L2

DOWN TO LL

OPEN TO BELOW

DN TO CONN

**HUDDLE**  
105 SF

UP TO BALCONY

891'-4 1/2"

+/- 889'-9"

DOWN

DOWN

TO BALCONY UP

DOWN

+/- 889'-9"

DOWN

DOWN

**FORUM/COMMONS**  
2625 SF

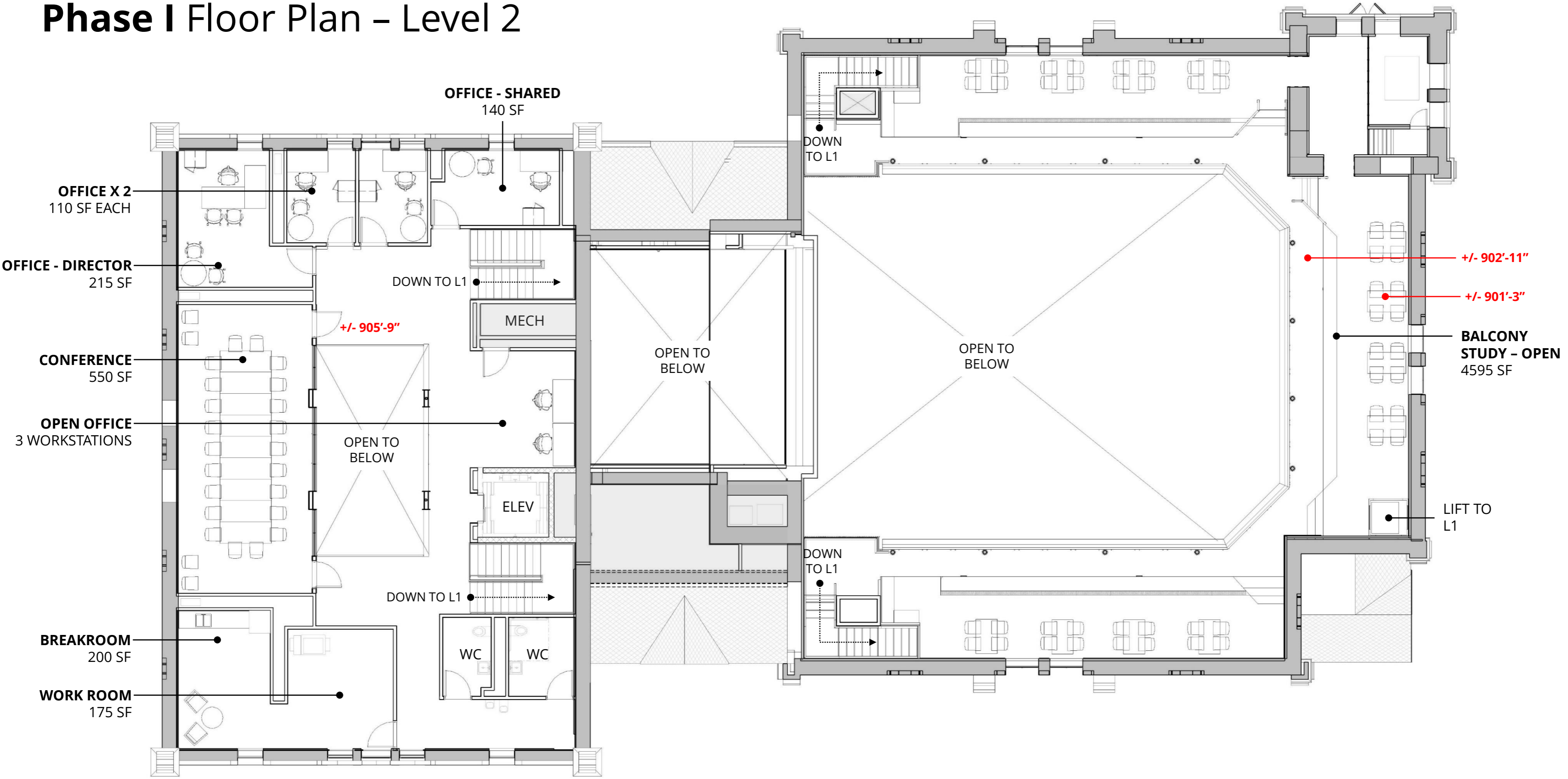
**STUDY - OPEN**  
2155 SF

LIFT TO BALCONY

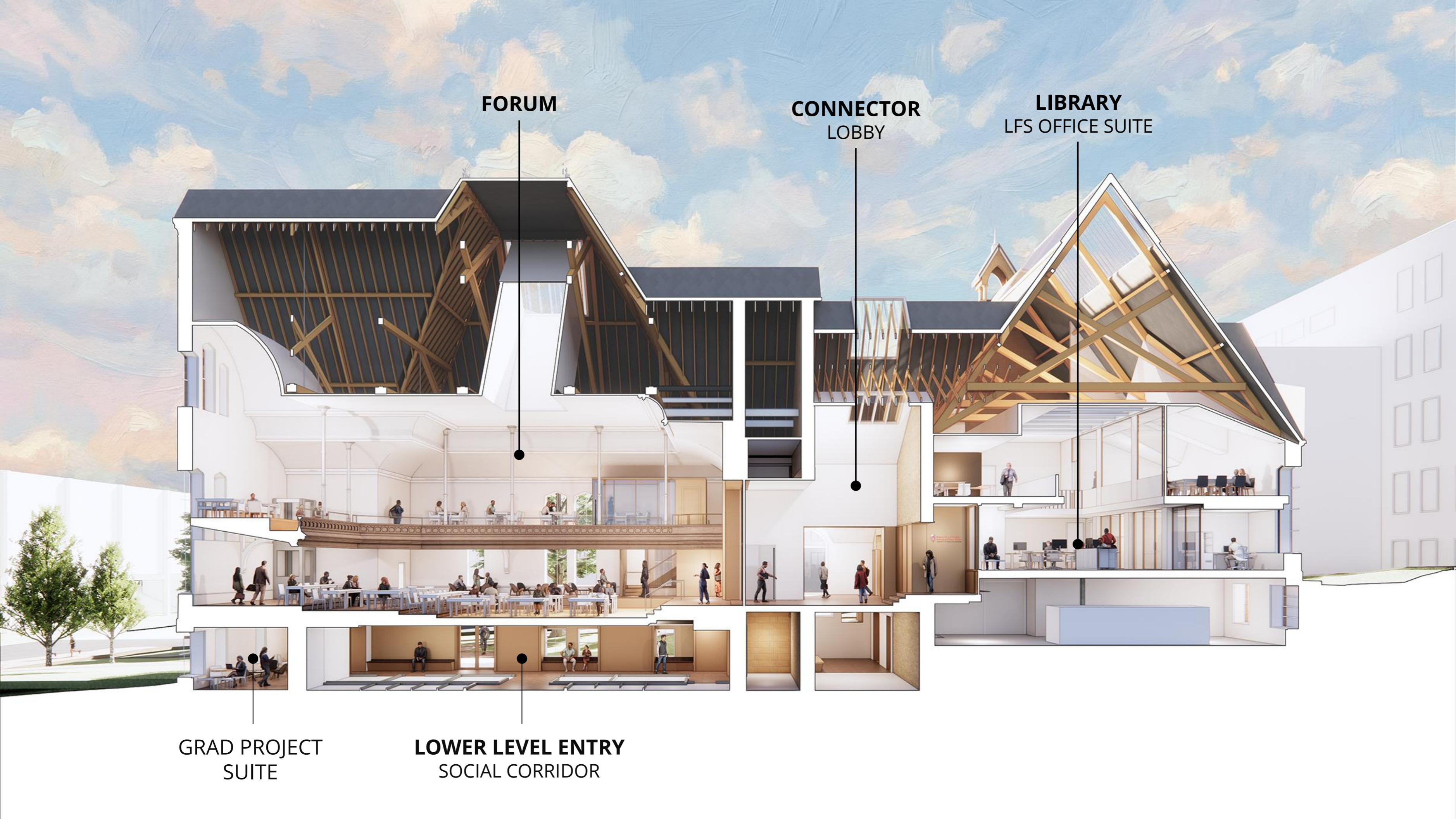


FLOOR ELEVATIONS IN RED

# Phase I Floor Plan - Level 2



FLOOR ELEVATIONS IN RED



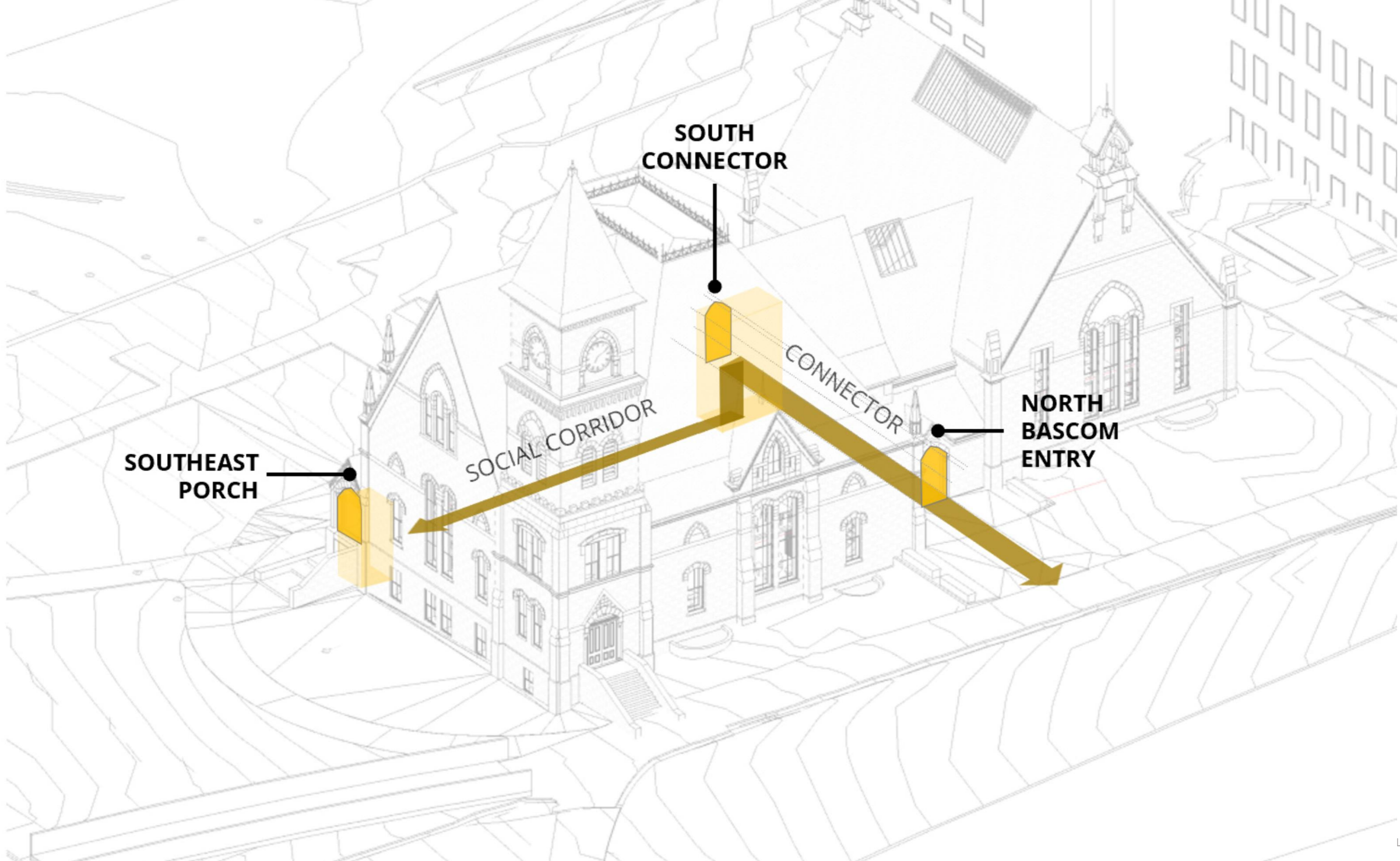
**FORUM**

**CONNECTOR**  
LOBBY

**LIBRARY**  
LFS OFFICE SUITE

**GRAD PROJECT**  
SUITE

**LOWER LEVEL ENTRY**  
SOCIAL CORRIDOR



**SOUTHEAST  
PORCH**

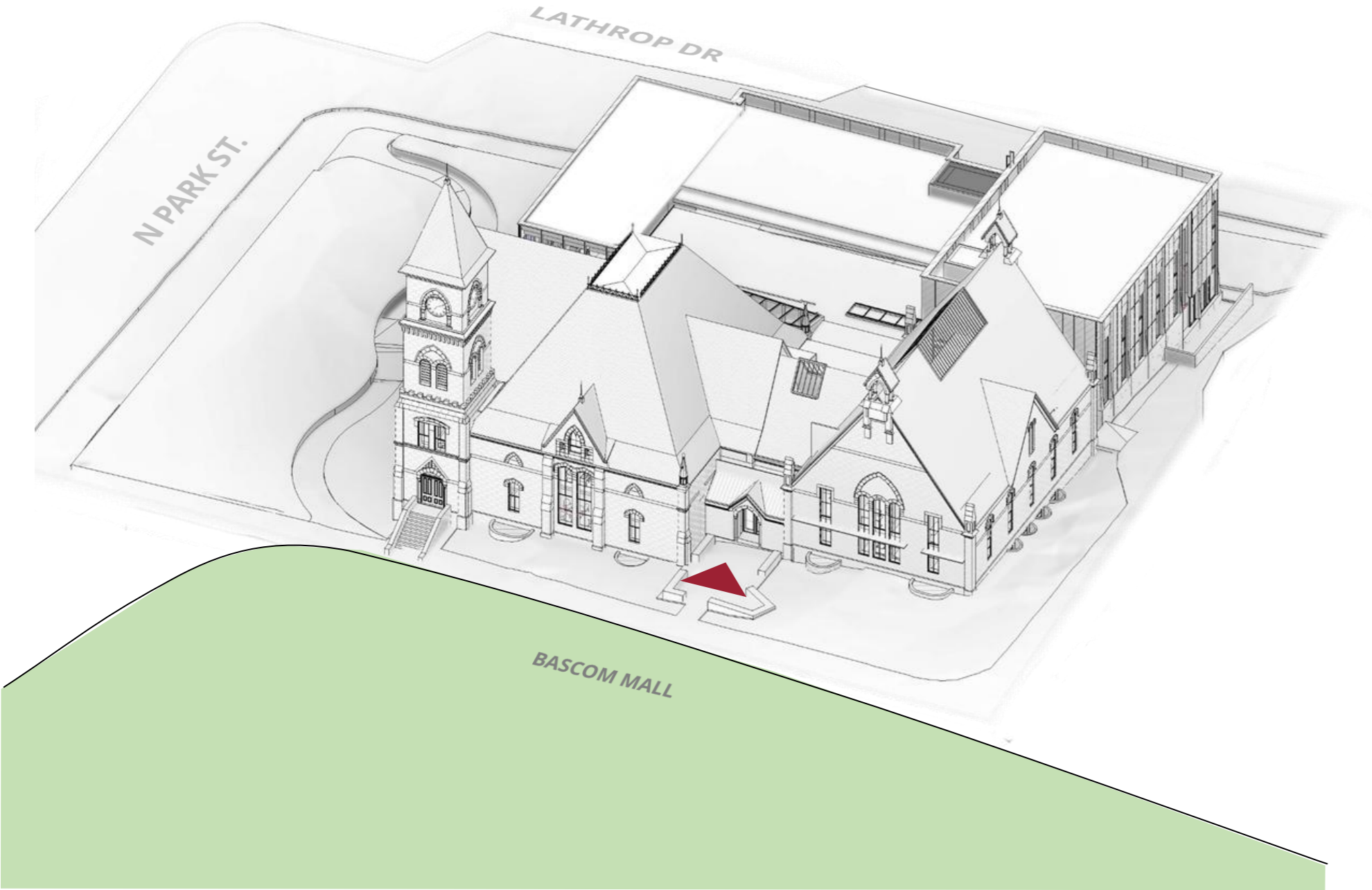
**SOUTH  
CONNECTOR**

**SOCIAL CORRIDOR**

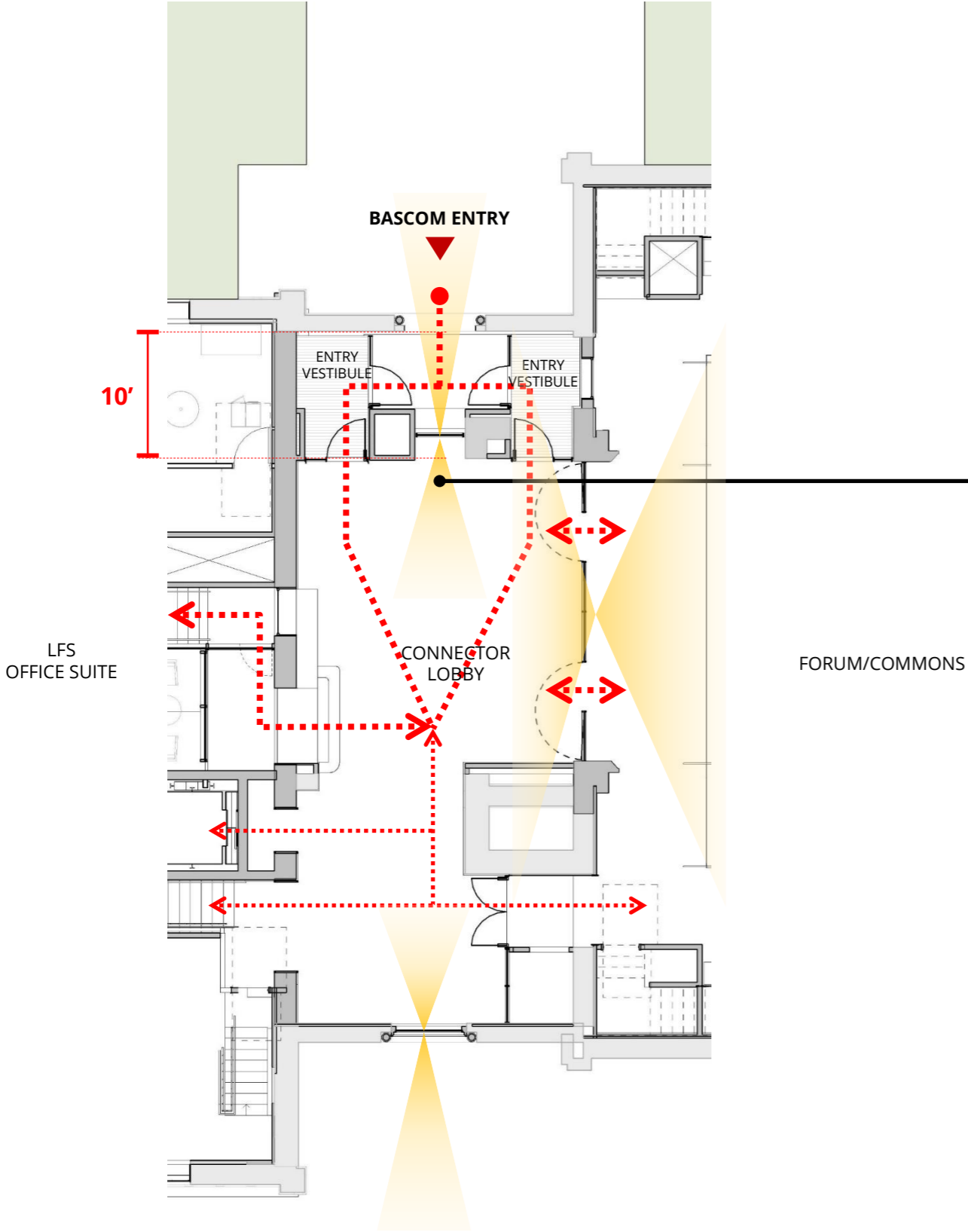
**CONNECTOR**

**NORTH  
BASCOM  
ENTRY**

# Bascom Mall Entry



# Connector



## Main Entry

- Large fixed glass opening centered on historic masonry opening
- Two (2) sets of single doors flanking masonry opening
- Allows inside face of vestibule to push north, aligning with north end of Forum glass partition

# Connector



VIEW LOOKING TOWARDS ENTRY VESTIBULE FROM BASCOM (EXTERIOR)



VIEW LOOKING EAST TOWARDS FORUM FROM CONNECTOR



VIEW LOOKING SOUTH THROUGH CONNECTOR



VIEW LOOKING NORTH TOWARDS MAIN ENTRY VESTIBULE

# South Connector / Social Corridor



# SE Porch Entry



KIERANTIMBERLAKE

# Music Hall Renovation + Addition Phase I

University of Wisconsin-Madison

