

Yahara Hills Golf Course Update



Overview of Land Sale & Agreements

- Land Sale Agreement between City of Madison Public Works and Dane County Waste & Renewables
- 232 Acres of golf course land
 - Expand landfill, serve community for at least 70 years
 - Expand sustainability practices through Sustainable Business Park
 - Compost facility
 - Disposal of dredging materials
 - Ultimately restore to more natural state for future recreational uses
 - Future purchase option approximately 100 acres if conditions are met
 - Opportunity to invest in Capital needs of Golf Enterprise Program

Project Timeline

- Neighborhood Meetings Held – March 17 & April 21, 2022
- Neighborhood Development Plan and Agreements Introduced at Common Council – March 29
- Agreements referred to:
 - Board of Public Works – April 6th (recommended adoption)
 - Board of Parks Commission – April 13th (recommended adoption)
 - Finance Committee – April 25th (recommended adoption)
- Review NDP amendment with various City committees
 - Board of Parks Commission – April 13 (recommended adoption)
 - Transportation Policy and Planning Board – April 18 (recommended adoption)
 - Plan Commission – April 25 (recommended adoption)
- Anticipated Common Council review and potential adoption – May 10 or May 24

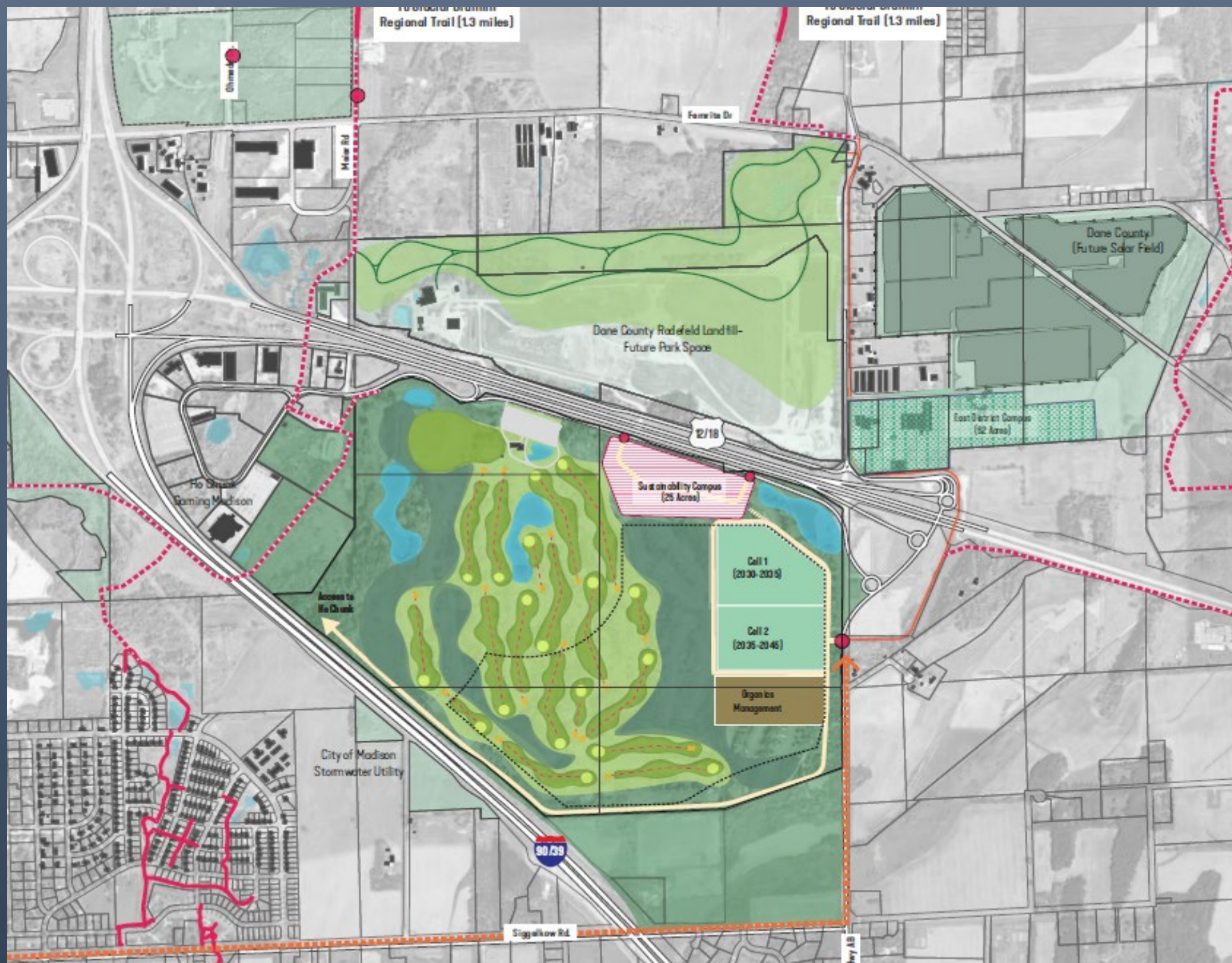


Preliminary Site Plan

Dane County Department of Waste & Renewables
Dane County Sustainability Campus
February 28, 2022

vierbicher
planners | engineers | advisors





Golf Enterprise Impact

Ongoing Preliminary site inspection work through Temp Land Use Permit with Parks

- Golf Operations Leases
 - 2022-2024: 36 holes of golf
 - Through 2025: 27 holes of golf
 - 2026-2042: 18 holes of golf
- Irrigation Easement: remove/relocate irrigation through end of 2026
- Facility Lease: Use of current Maintenance Facility through 2028

Capital Investment

- Pay-off remaining debt (approximately \$700K)
- Developing plan for long-term investment
 - Address recommendations from Task Force
 - LTE Crew to perform improvements in-house
 - Greens/Tees/Bunker across system
 - Natural areas
 - Tree care improvements
 - Address irrigation issues
 - New maintenance facility at Yahara
 - Address buildings and parking lots
 - Playable 18 hole course at Yahara, working with nature

Questions?