

**APPLICATION FOR  
URBAN DESIGN COMMISSION  
REVIEW AND APPROVAL**

**AGENDA ITEM #** \_\_\_\_\_

**Project #** \_\_\_\_\_

DATE SUBMITTED: <u>February 23, 2011</u>	<b>Action Requested</b>
UDC MEETING DATE: <u>March 2, 2011</u>	<input type="checkbox"/> Informational Presentation
	<input type="checkbox"/> Initial Approval and/or Recommendation
	<input checked="" type="checkbox"/> Final Approval and/or Recommendation

PROJECT ADDRESS: 4620 Frey Street

ALDERMANIC DISTRICT: District #11, Chris Schmidt

OWNER/DEVELOPER (Partners and/or Principals)

ARCHITECT/DESIGNER/OR AGENT:

Stone House Development, Inc.

Knothe & Bruce Architects, LLC

321 E. Main Street

7601 University Avenue, Suite 201

Madison, WI 53703

Middleton, Wisconsin 53562

CONTACT PERSON: J. Randy Bruce/Knothe & Bruce Architects, LLC

Address: 7601 University Avenue, Suite 201

Middleton, Wisconsin 53562

Phone: 608-836-3690

Fax: 608-836-6934

E-mail address: [rbruce@knothebruce.com](mailto:rbruce@knothebruce.com)

**TYPE OF PROJECT:**

(See Section A For:)

- Planned Unit Development (PUD)
  - General Development Plan (GDP)
  - Specific Implementation Plan (SIP)
- Planned Community Development (PCD)
  - General Development Plan (GDP)
  - Specific Implementation Plan (SIP)
- Planned Residential Development (PRD)
- New Construction or Exterior Remodeling in an Urban Design District\* (A public hearing is required as well as a fee)
- School, Public Building or Space (Fee may be required)
- New Construction or Addition to or Remodeling of a Retail, Hotel, or Motel Building Exceeding 50,000 Sq.Ft.
- Planned Commercial Site

(See Section B for:)

- New Construction or Exterior Remodeling in C4 District (Fee required)

(See Section C for:)

- R.P.S.M. Parking Variance (Fee required)

(See Section D for:)

- Comprehensive Design Review\* (Fee required)
- Street Graphics Variance\* (Fee Required)
- Other \_\_\_\_\_

\*Public Hearing Required (Submission Deadline 3 Weeks in Advance of Meeting Date)

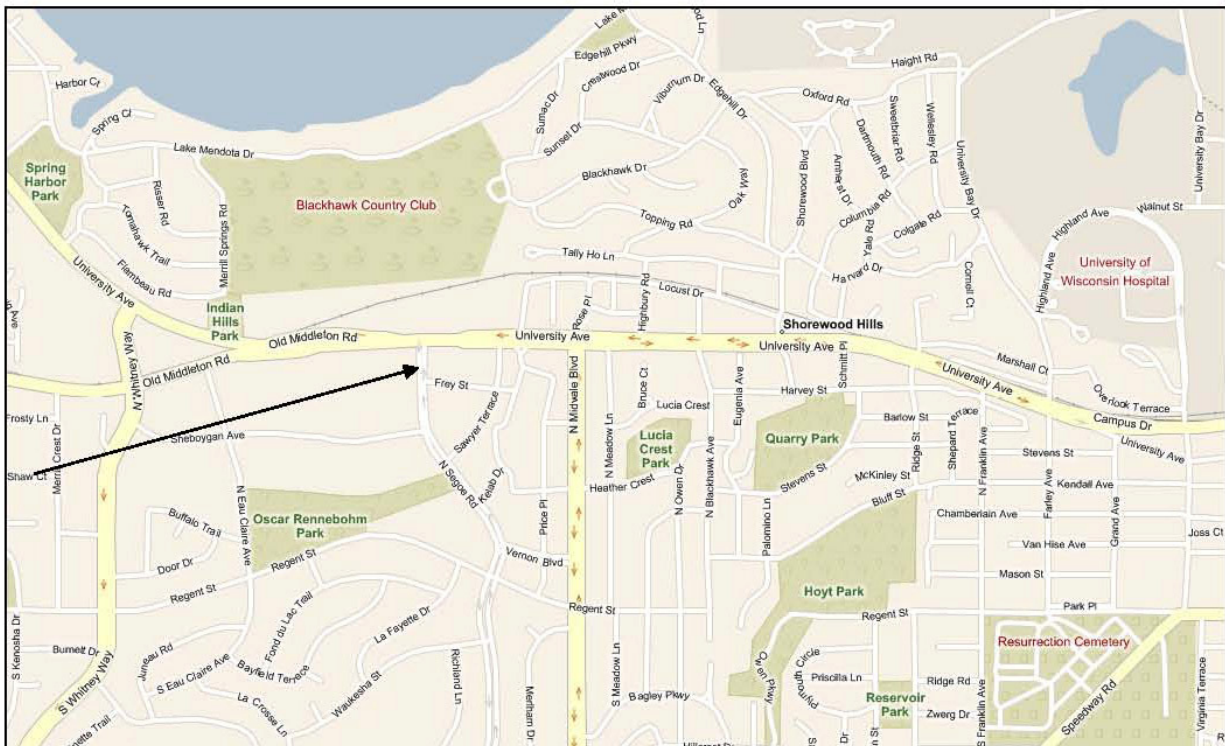
## UDC Final Submittal- Revised Material

February 23, 2011

4620 Frey Street

We are requesting a Final UDC approval for a revision to the recorded PUD-SIP located at 4620 Frey Street. The original elevations called out for fiber cement panel and reveal trim which we are proposing to change to metal panels. See attached drawings.

### Locator Map

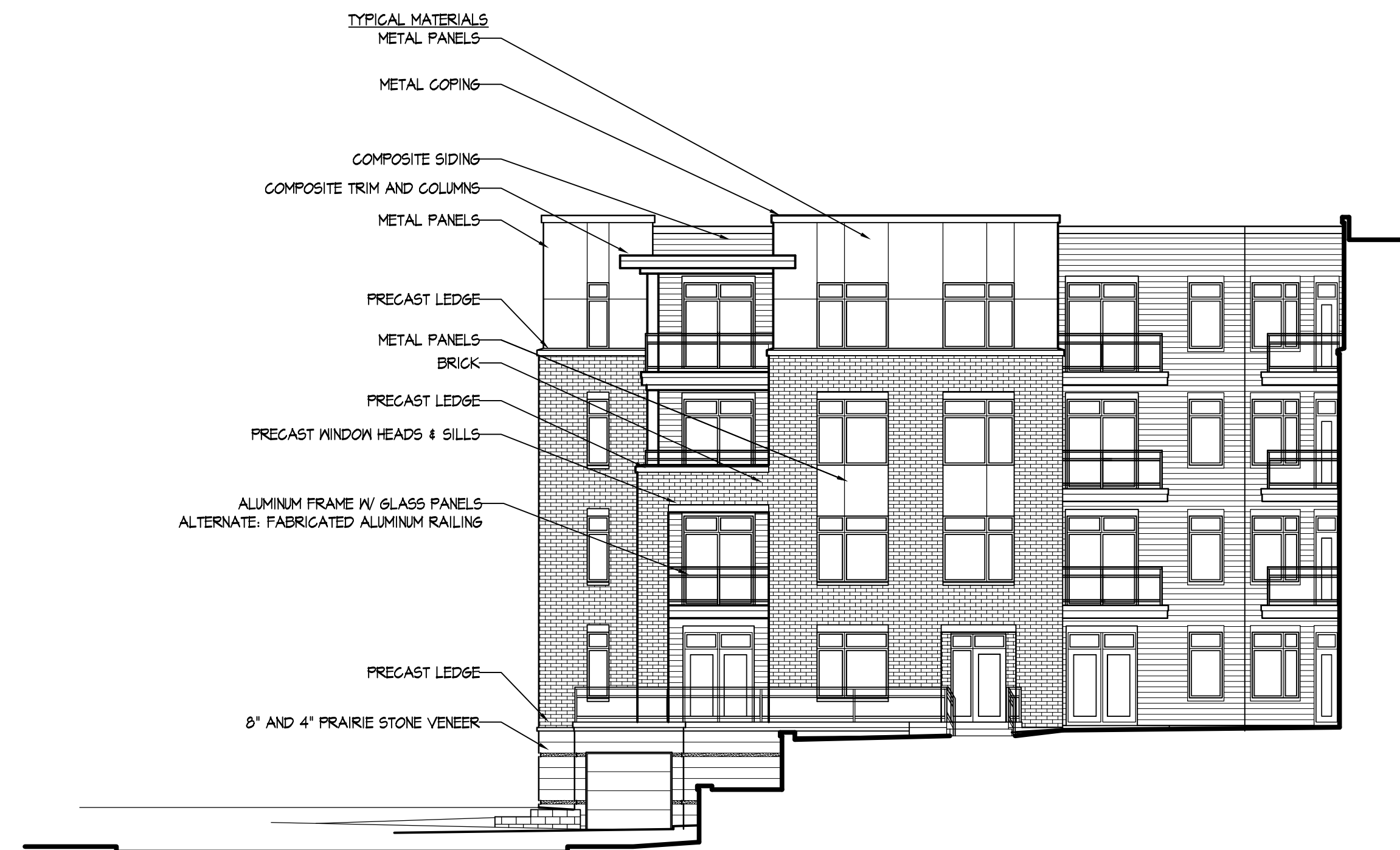


Consultant

Notes



BLDG A - SOUTH ELEVATION ALONG FREY STREET  
9/82" = 1'-0"



BLDG A - NORTH ELEVATION INSIDE COURTYARD  
9/82" = 1'-0"



BLDG A & B - WEST ELEVATION ALONG SEGOE ROAD  
9/82" = 1'-0"

Revisions  
UDC Final Revision Submittal - February 28, 2011

Project Title  
**The Overlook at Hilldale**  
(formerly Hilldale Place Apartments)  
4620 Frey Street  
Madison, WI

Drawing Title  
**Elevations**

Project No. Drawing No.

1007

A-2.1

This document contains confidential or proprietary information of Knothe & Bruce Architects. Neither the document nor the information herein is to be reproduced, distributed, used, or disclosed, either in whole or in part, except as specifically authorized by Knothe & Bruce Architects. Knothe & Bruce Architects is a Limited Liability Company of Wisconsin.



- TYPICAL MATERIALS
- METAL FASCIA & SOFFIT
  - METAL PANELS
  - COMPOSITE SIDING
  - COMPOSITE TRIM AND COLUMN
  - PRECAST LEDGE
  - 8" AND 4" PRAIRIE STONE VENEER
  - WINDOWS
  - BRICK
  - PRECAST LEDGE
  - PRECAST WINDOW HEADS & SILLS
  - ALUMINUM FRAME W/ GLASS PANELS ALTERNATE: FABRICATED ALUMINUM RAILING

- METAL PANELS
- EIFS - MATCH PRAIRIE STONE COLOR, TEXTURE AND COURSING



- TYPICAL MATERIALS
- METAL COPING
  - METAL PANELS
  - COMPOSITE SIDING
  - COMPOSITE TRIM
  - WINDOWS
  - BRICK
  - PRECAST LEDGE
  - PRECAST WINDOW HEADS & SILLS
  - ALUMINUM FRAME W/ GLASS PANELS ALTERNATE: FABRICATED ALUMINUM RAILING
  - PRECAST LEDGE
  - 8" AND 4" PRAIRIE STONE VENEER

BLDG B - NORTH ELEVATION ALONG UNIVERSITY AVENUE  
3/8" = 1'-0"

BLDG B - SOUTH ELEVATION INSIDE COURTYARD  
3/8" = 1'-0"

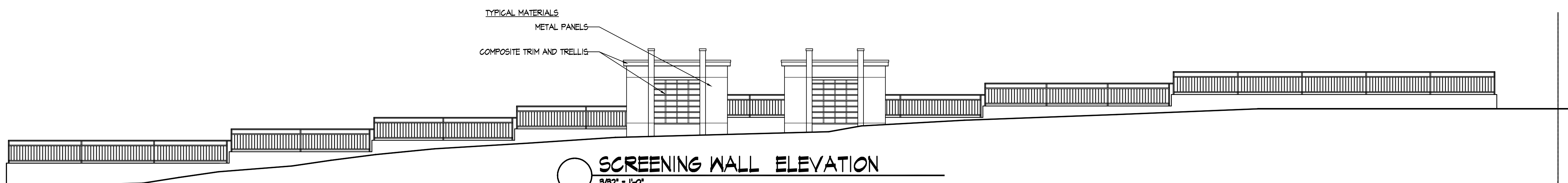
BUILDING B  
TRANSITION @ INSIDE CORNER

BUILDING A  
TRANSITION @ INSIDE CORNER



- METAL PANELS
- EIFS - MATCH PRAIRIE STONE COLOR, TEXTURE AND COURSING
- PRAIRIE STONE VENEER

BLDG A & B - EAST ELEVATION INSIDE COURTYARD  
3/8" = 1'-0"



- TYPICAL MATERIALS
- METAL PANELS
  - COMPOSITE TRIM AND TRELLIS

SCREENING WALL ELEVATION  
3/8" = 1'-0"

Revisions  
UDC Final Revision Submittal - February 23, 2011

Project Title  
**The Overlook at Hilldale**  
(formerly Hilldale Place Apartments)  
4620 Frey Street  
Madison, WI

Drawing Title  
**Elevations**

Project No. Drawing No.

1007 A-2.2

This document contains confidential or proprietary information of Knothe & Bruce Architects. Neither the document nor the information herein is to be reproduced, distributed, used, or disclosed, either in whole or in part, except as specifically authorized by Knothe & Bruce Architects. Knothe & Bruce Architects is a Limited Liability Company of Wisconsin.