



Certificate of Appropriateness for 1708 Regent

March 11, 2019



Proposed Work

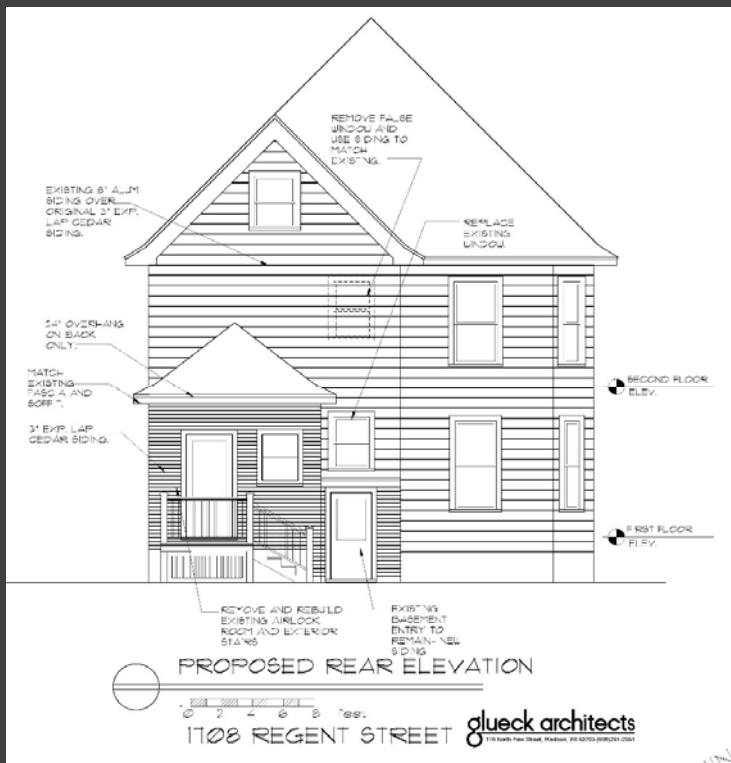
- Demolition of enclosed rear porch (27 sq ft)
- Construction of a single-story addition (75 sq ft) in same location
- Removal of one false window
- Replacement of two nonhistoric windows



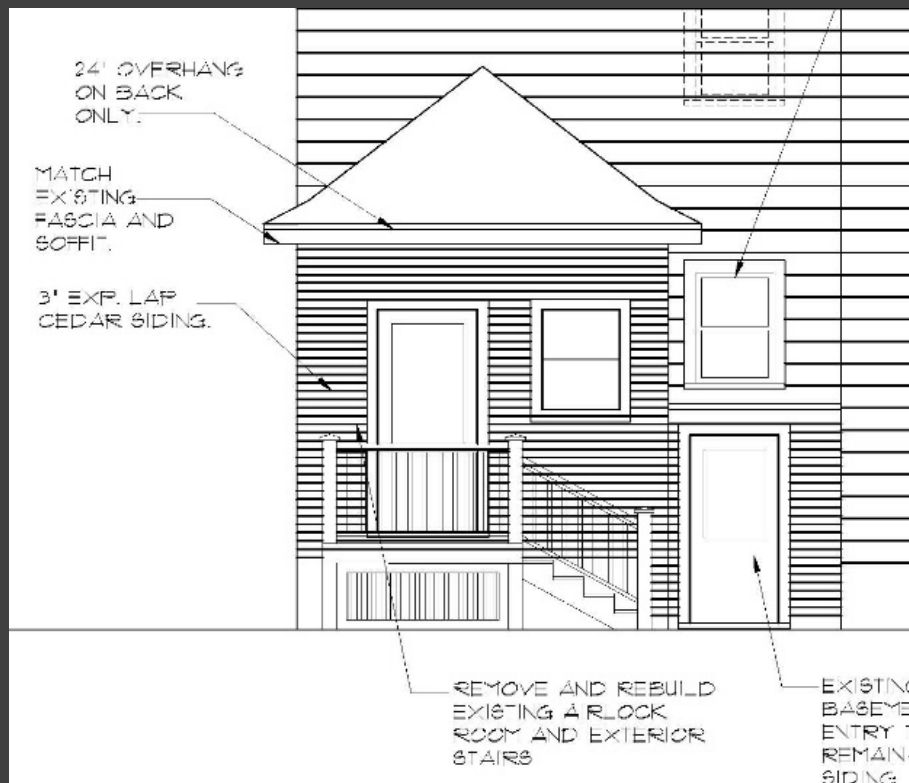
Demolition of Rear Porch



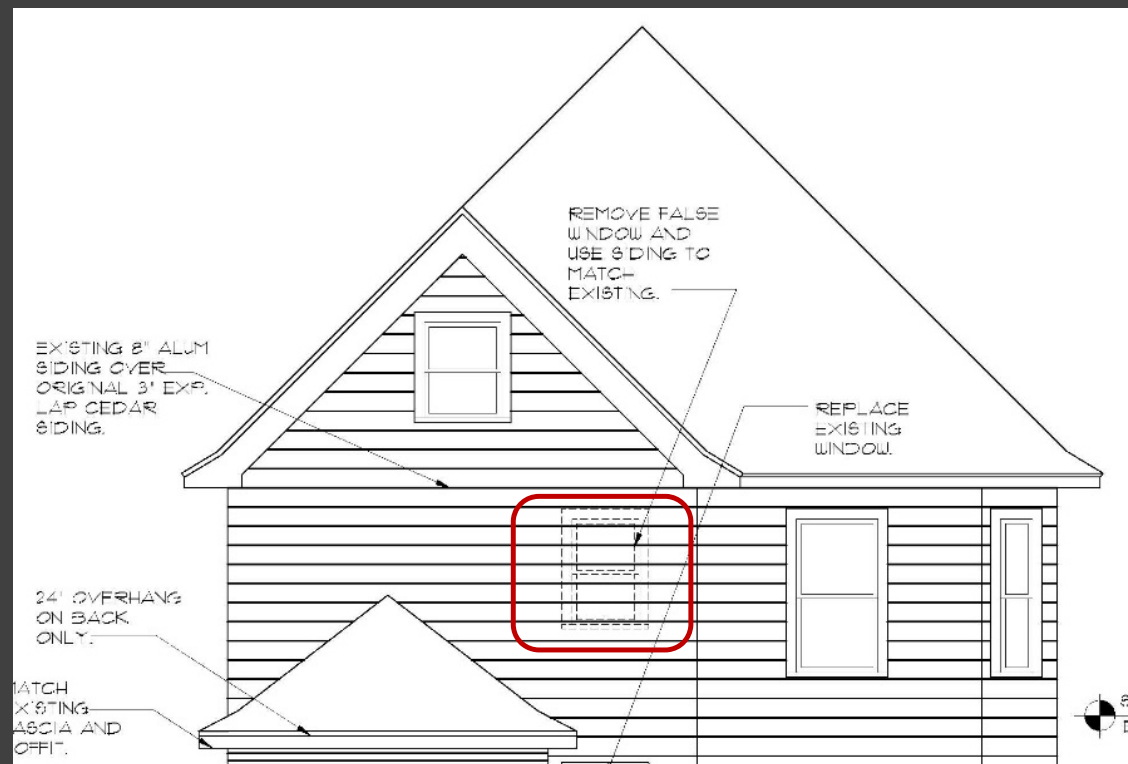
New Single-story Addition



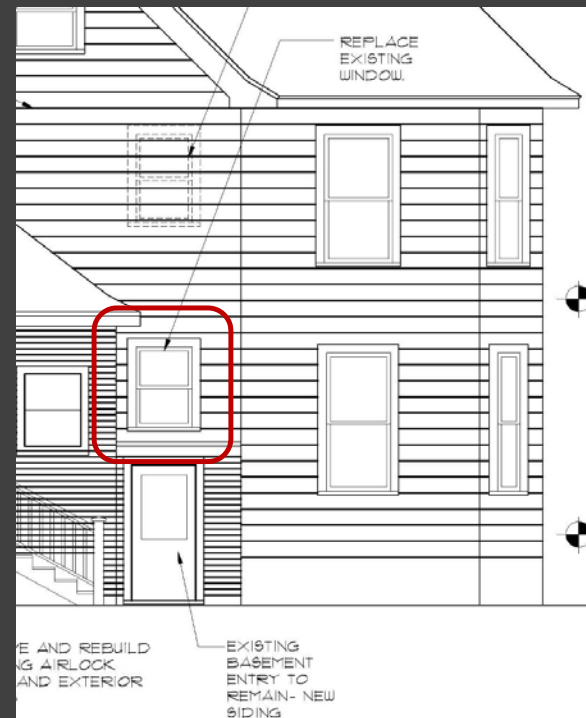
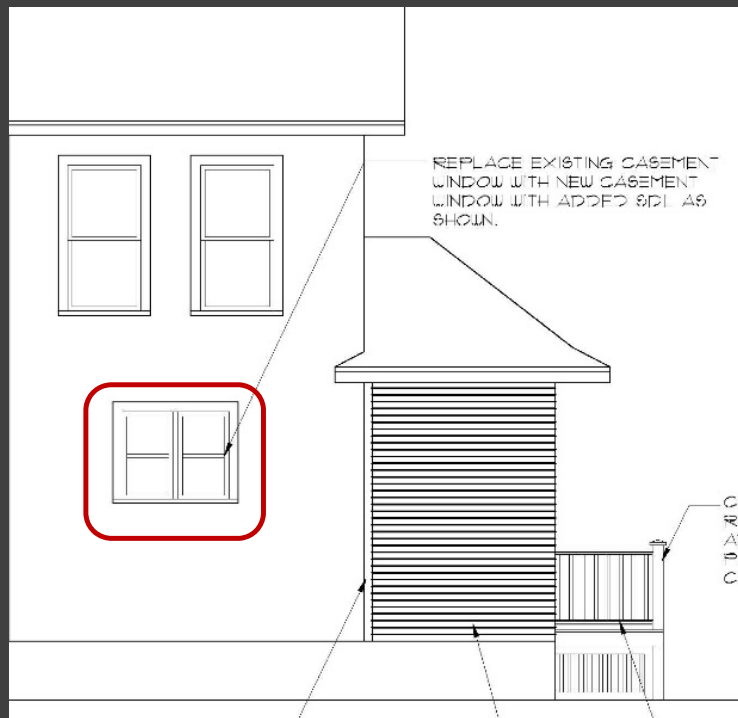
Siding on Rear Addition



Remove False Window



Replace Non-historic Windows



Staff Recommendation

Staff believes that the standards for granting a Certificate of Appropriateness are met for the proposed alterations and recommends the Landmarks Commission approve this request subject to the following conditions:

1. The window and door specifications be approved by staff.

