

Transportation Efforts Responding to Covid-19

March 2020

Sun	Mon	Tue	Wed	Thu	Fri	Sat
1	2	3	4	5	6	7
8	9	10	11 WHO Pandemic	12 WI Public Emergency	13	14 WI Schools Suspended
15	16	17	18	19	20	21
22	23	24 WI Safer at Home	25	26	27	28
29	30	31	1	2	3	4

Tony Evers orders all Wisconsin schools to close amid COVID-19 coronavirus pandemic

Riley Vetterkind | Wisconsin State Journal | Mar 14, 2020

SALE! Subscribe for \$1/mo.



Under the emergency declaration he announced Thursday, Gov. Tony Evers has directed the state Department of





State of Wisconsin
Department of Health Services

Tony Evers, Governor
Andrea Palm, Secretary

**EMERGENCY ORDER #12
SAFER AT HOME ORDER**

WHEREAS, in December, 2019, a novel strain of the coronavirus was detected, now named COVID-19, and it has spread throughout the world, including every state in the United States;

WHEREAS, on January 30, 2020, the World Health Organization declared COVID-19 to be a Public Health Emergency of International Concern;

WHEREAS, on March 12, 2020, Governor Tony Evers declared a public health emergency to direct all resources needed to respond to and contain COVID-19 in Wisconsin;

WHEREAS, Governor Evers designated the Department of Health Services as the lead agency to respond to the emergency and directed the Department to take all necessary and appropriate measures to prevent and respond to incidents of COVID-19 in Wisconsin;

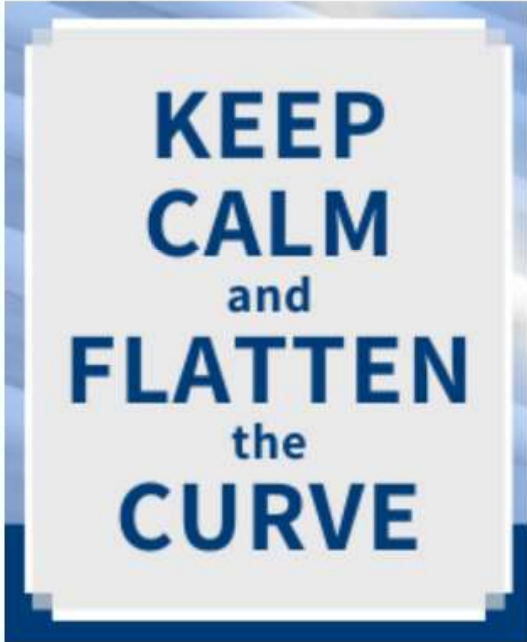
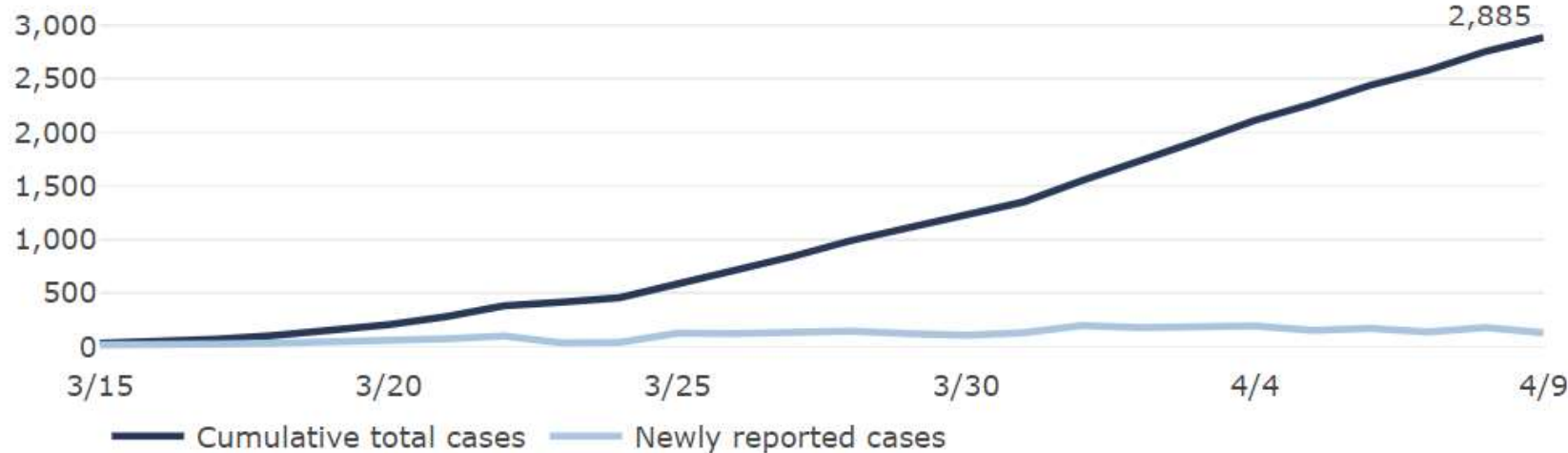
WHEREAS, on March 13, 2020, President Donald Trump proclaimed a

COVID-19 (Coronavirus Disease)



Cumulative total COVID-19 cases by date confirmed

Updated: 4/9/2020



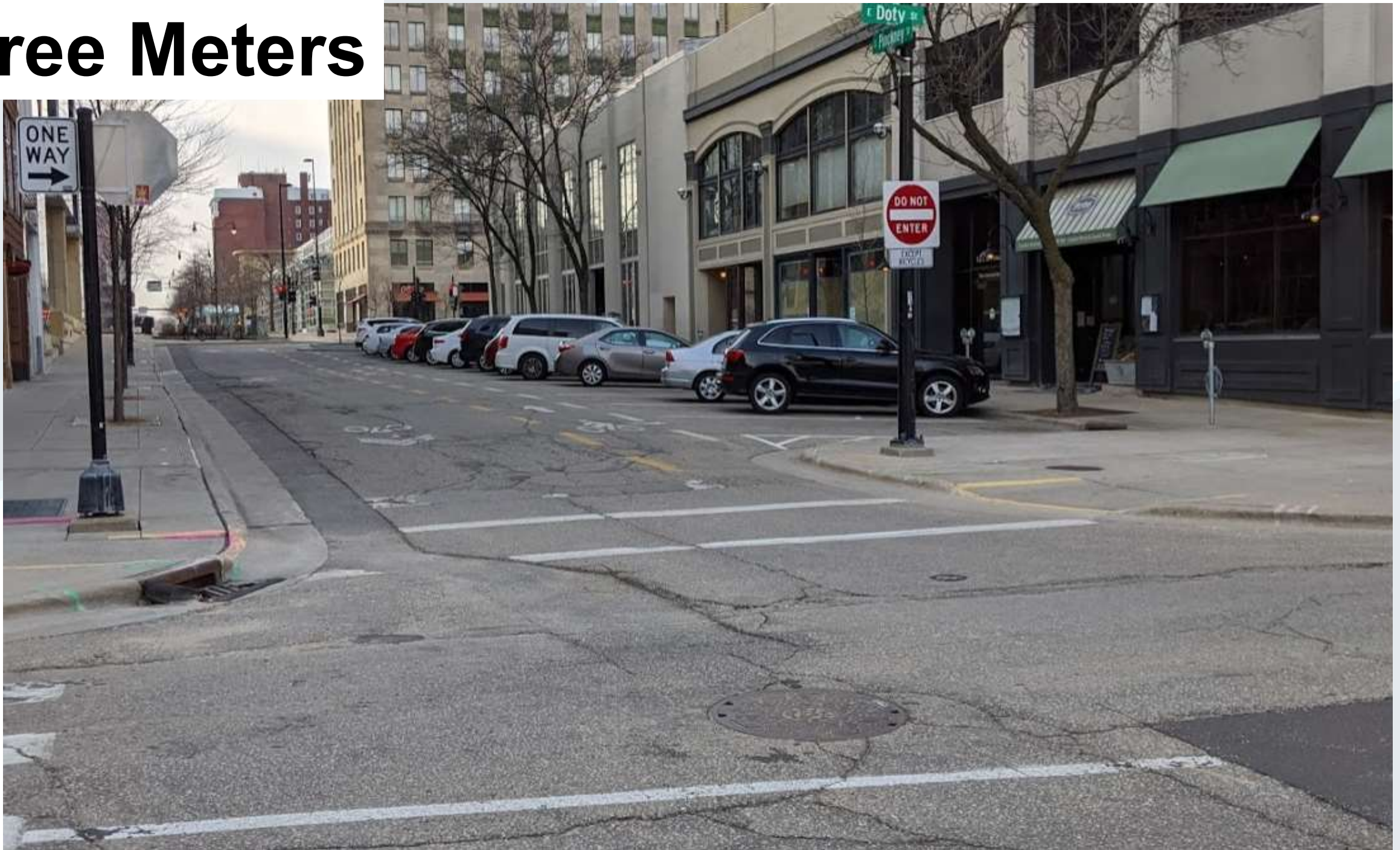
Outbreaks & Investigations

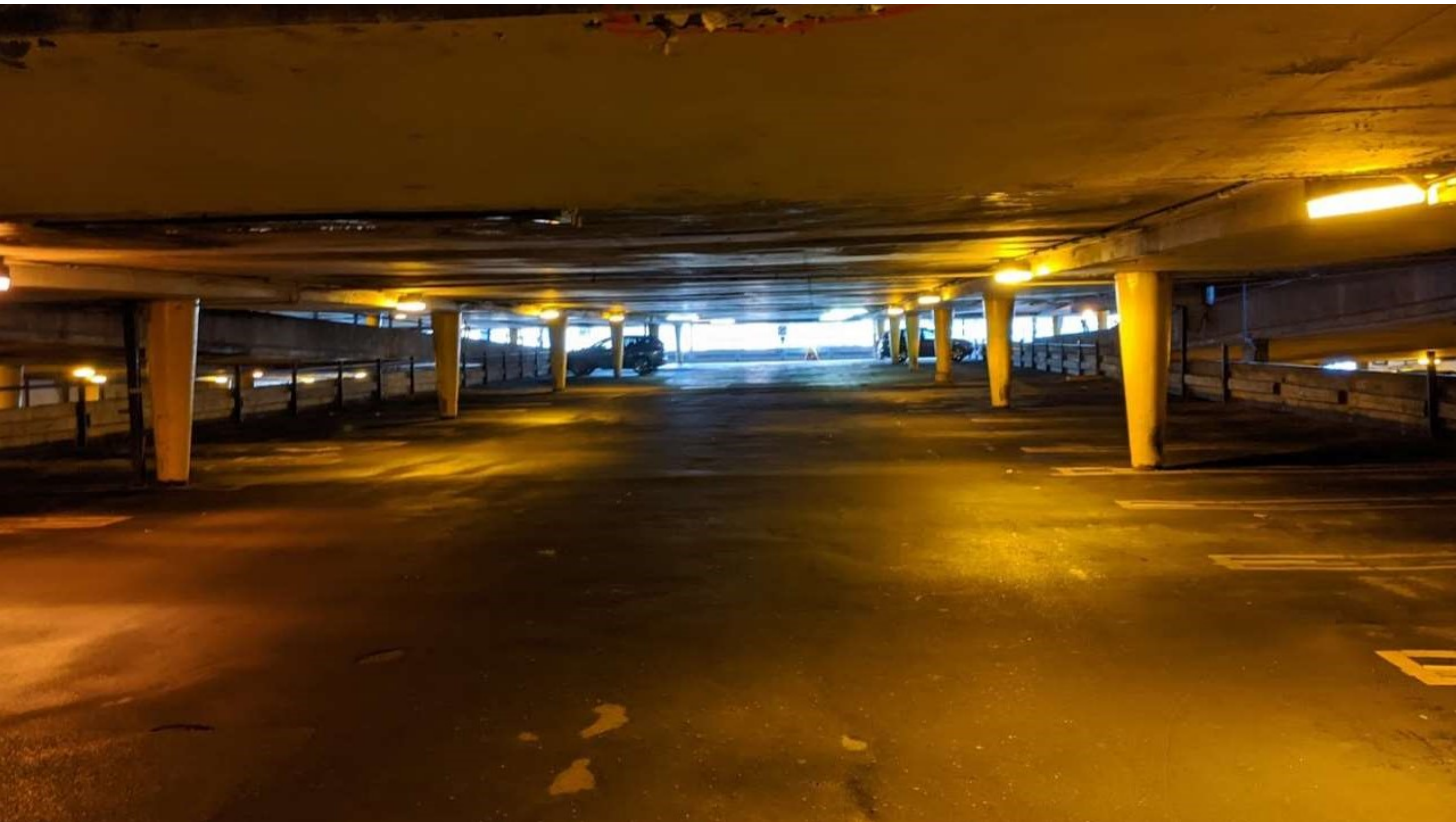
Parking

March 2020

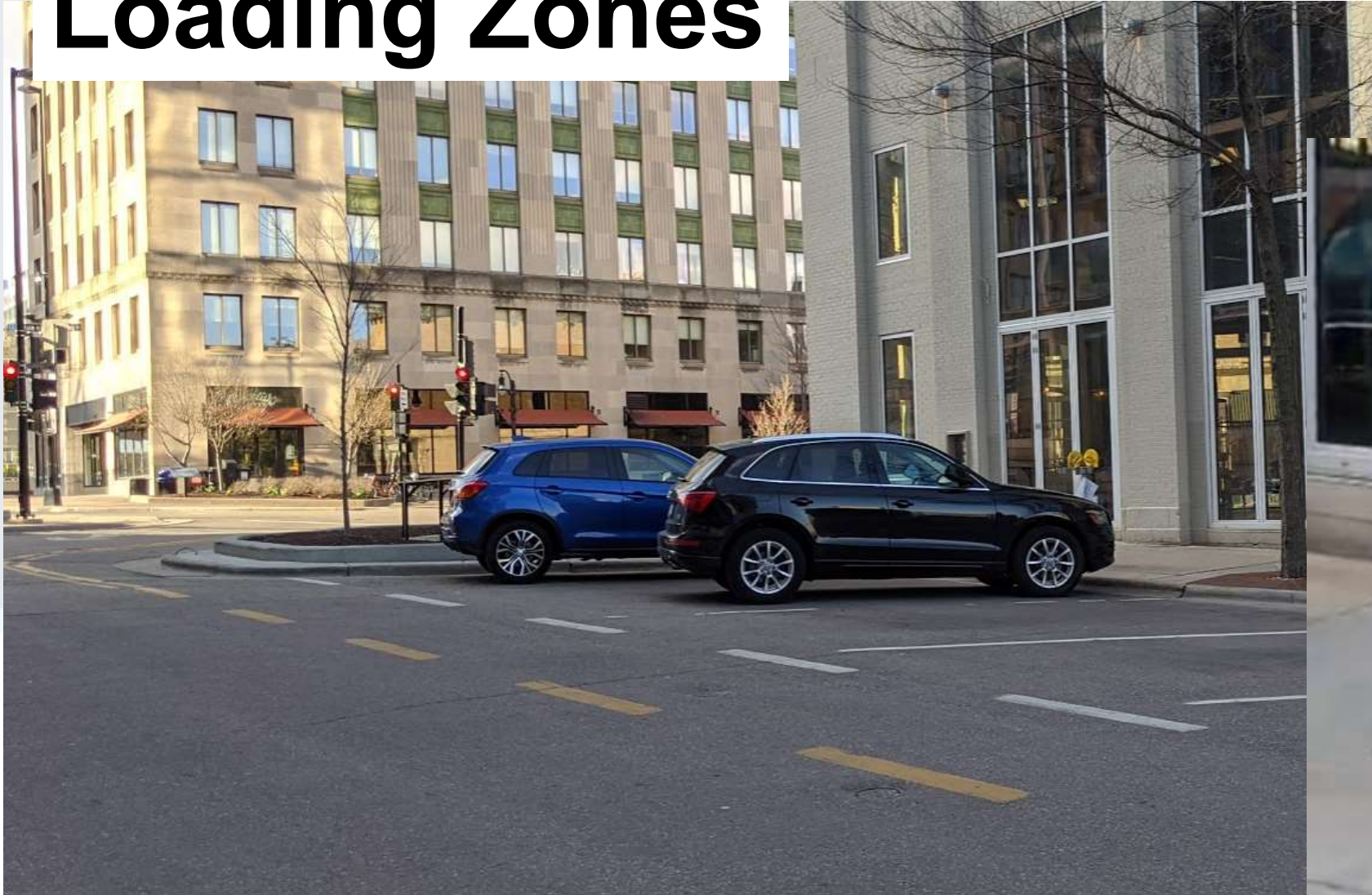
Sun	Mon	Tue	Wed	Thu	Fri	Sat
1	2	3	4	5	6	7
8	9	10	11 WHO Pandemic	12 WI Public Emergency	13	14 WI Schools Suspended
15	16	17 Meters Suspended	18	19	20	21
22 Temp Loading Zones	23	24 WI Safer at Home	25	26	27	28
29	30	31	1	2 Suspend 1&2 hr Clean Sts	3	4

Free Meters





Loading Zones



MADISON DEPARTMENT



OF TRANSPORTATION



metro transit

Monitoring of other Transit Systems

Other Transit Agencies (Apr 6)					
Fares					
Agency	3-Apr	23-Mar	20-Mar	Other Actions	Website
Minneapolis Metro	Yes	Yes	Yes	Suspending overnight service for buses and LRT between 11:00p-4:30a, Reducing Service Limiting to 10 passengers	https://www.metrotransit.org/metro-transit-suspending-overnight-service
Chicago CTA	Yes	Yes	Yes	Deep cleaning of vehicles and stations, normal service	https://www.transitchicago.com/coronavirus/
San Francisco MUNI	Yes	Yes	Yes	Eliminate service on 72 routes; focus on 17 most used core routes; ridership down 83%; paratransit normal. Cable cars and trains replaced with buses. Service center closed	https://www.sfmta.com/projects/covid-19-developments-response
New York MTA	No	No	Yes	Rear door entry, 75% service	http://www.mta.info/press-release/nyc-transit/mta-twu-and-atu-announce-rear-door-boarding-all-local-sbs-buses-beginning
Milwaukee MCTS	No	Yes	Yes	Extra precautions and cleaning. Reduced service. Asking users to use mobile app.; rear door access only; passengers asked to keep distance	https://www.ridemcts.com/about-mcts/news/march-16-mcts-update-on-coronavirus-or-covid-19
Seattle – King County Metro	No	No	Yes	Rear door boarding, Service reductions. Suspend fare enforcement; ridership down 72%; further Metro and Sound Transit service reductions Apr 6	https://kingcountymetro.blog/
LA Metro	No	No	Yes	Service reduced 15-20%; recommend passengers wear face masks; Metro rail stopping service at midnight; deep cleaning of vehicles and stations	https://thesource.metro.net/2020/03/03/metro-coordinating-with-l-a-county-department-of-public-health-in-response-to-recent-reports-of-covid-19/
Cleveland GCRTA	Yes	Yes	Yes	Park n ride trolley suspended; reduced services starting Apr 12; deep cleaning	http://www.riderta.com/coronavirus
Grand Rapids – The Rapid	Yes	Yes	Yes	Reducing service frequency (BRT 30 min.). Enhanced cleaning. Closing service centers; limit of 10 passengers on DASH buses and 15 on BRT	https://www.ridetherapid.org/coronavirus
Champaign Urbana	No	No	No	Reducing service; rear door boarding	https://mtd.org/inside/covid-19/
Nashville MTA	Yes	Yes	Yes	Increased cleaning. Operating Saturday service.	https://nashvillemta.org/Nashville-MTA-WeGo-Covid-19-Updates.asp
Omaha Transit	Yes		Yes	Reduced service on most routes; 50% ridership drop; deep cleaning; added buses on some routes to help with passenger social distancing	http://www.ometro.com/index.php/alert/covid-19/
Portland – Trimet	No		Yes	Continuing service; no more than 10-15 passengers per vehicle; no cash fares taken on vehicles	https://trimet.org/health/
Phoenix – Valley Metro	Yes		Yes	Reduced service starting Apr 6, offices closed, Enhanced cleaning; rear door boarding	https://www.valleymetro.org/news/our-response-coronavirus
Akron - Metro	No		No	Reduced service starting Apr 6; no Sunday service as of Apr 12; enhanced cleaning	https://www.akronmetro.org/free-fares-start-317.aspx
Des Moines – DART	No		No	Reduced service Apr 12 (Saturday schedule); limited access to central station; enhanced cleaning; rear door boarding	https://www.ridedart.com/
Dallas - DART	Yes		Yes	Reduced service for DART and TRE starting Apr 6; enhanced cleaning; transit center waiting areas temporarily closed	https://dartdaily.dart.org/
Houston – Metro	No	No	Yes	Adding buses to prevent overcrowding; seating limitations to facilitate passenger social distancing; service reductions on most routes; rear door entry	https://www.ridemetro.org/Pages/Coronavirus.aspx
Indianapolis – IndyGo	No		Yes	Saturday schedule (Mon-Sat); one rider per row on buses; rear door entry; Enhanced cleaning, closing restrooms	https://www.indygo.net/health/
Kansas City – KCRTA	No		No	Reduced street car hours, enhanced cleaning,	https://ridekc.org/news/covid-19
Atlanta – MARTA	Yes		Yes	Enhanced cleaning; reduced service for bus and rail; hiring freeze	https://www.itsmarta.com/coronavirus.aspx
Pittsburgh – Port Authority	Yes		Yes	Reduced services; Distancing on bus encouraged; enhanced cleaning	https://www.portauthority.org/coronavirus
				Reduced service operate Saturday schedule), closing of counters; rear boarding begins Apr 1: maximum passengers for distancing (bus-20.	

March 2020

Sun	Mon	Tue	Wed	Thu	Fri	Sat
1	2	3	4	5	6	7
8	9	10	11 WHO Pandemic	12 WI Public Emergency	13	14 WI Schools Suspended
15	16 Emergency Leave	17	18 Reduced Capacity Rear Exit	19 Enhance Cleaning	20	21
22	23 Reduced Service Single Use Buses	24 Rear Entry and Exit	25	26 Bathrooms	27	28
29	30	31	1	2	3	4



PPE
Masks





COVID-19

PREVENTION

**ENTER AT THE
REAR DOOR**



**ENTRA POR LA
PUERTA ATRÁS**





TEAM COVERAGE

**Keeping Metro Transit Buses Clean
Madison**

**CORONAVIRUS
COVID-19**

The slide features a white background with two large, light blue curved shapes on the left and right sides. A thin horizontal line is positioned above the text. The text 'Traffic Engineering' is centered in a bold, dark blue font.

Traffic Engineering

Traffic Engineering – Yang will Give Update

- Automatic Pedestrian Recall 50 intersections
- Social Distancing Signage
- Restrict traffic on some streets to local traffic only (discussed tonight)



DEPARTMENT



OF TRANSPORTATION