





145 IOTA COURT





619 N HENRY



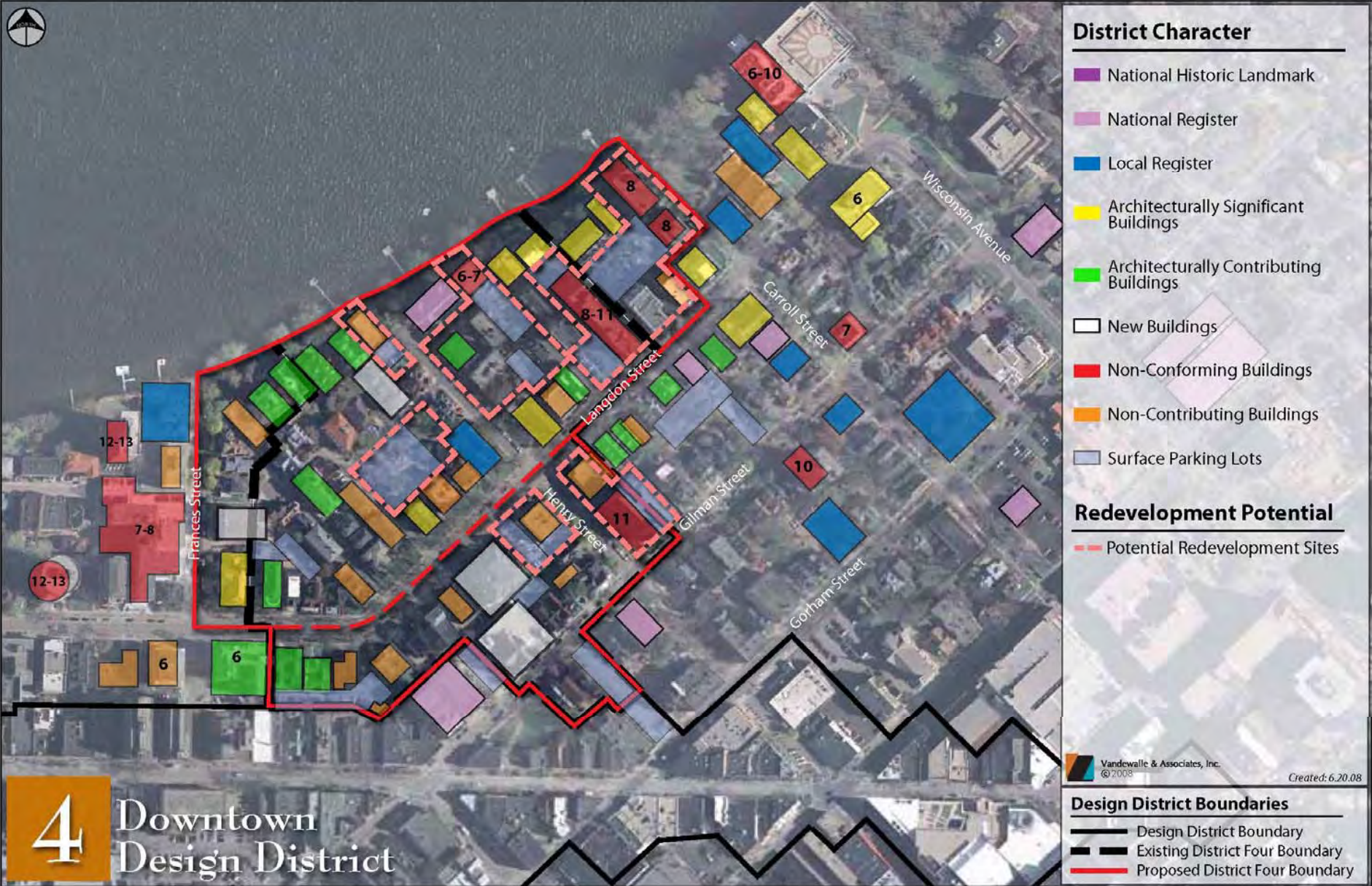
IOTA COURT PROJECT
EXISTING CONDITIONS
MADISON, WISCONSIN





IOTA COURT PROJECT
EXISTING CONDITIONS
 MADISON, WISCONSIN







- Non-Contributing Building
- Contributing Building
- Historic District Boundary
- Bonus Height Area


 Waterfront Apartments
 Figure Ground Site Plan


January 14, 2013
 #0804



IOTA COURT PROJECT
CONCEPT SKETCH
MADISON, WISCONSIN



**KNOTHE
& BRUCE**
architects

 Vandewalle & Associates, Inc.
© 2008

CREATED: MAY 12, 2008



- Non-Contributing Building
- Contributing Building
- Historic District Boundary
- Bonus Height Area


 Waterfront Apartments
 Figure Ground Site Plan

January 14, 2013
 #0804





Why 5 +2

- 1.) Maintain the character on the Lake and Langdon
- 2.) Avoid blocking key views
- 3.) Place mass centralized in the larger deep blocks
- 4.) Utilize grade transitions to incorporate density

IOTA COURT PROJECT
CONCEPT SKETCH
MADISON, WISCONSIN







Project Components



LAKE MENDOZA



HANKS' REPLAT OF LOIS 1 & 2 AND S.W. 82 E1 OF E3, 4 & 5 OF BLOCK 60

L.O.I. 1
L.O.I. 2
L.O.I. 3

IOTA COURT

HENRY STREET

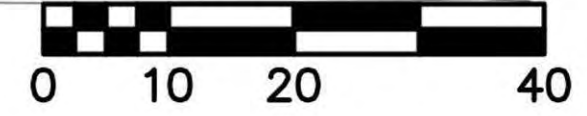
ORIGINAL

ORIGINAL PLAT OF BLOCK 6

PART OF L.O.I. 4

HANKS' REPLAT S.W. 82 E1 OF E3

GRAPHIC SCALE FEET



The Waterfront Apartments
Site Plan

January 30, 2013
#0804

KNOTHE
& BRUCE
architects



PR

Langdon Mid-Block Path Concept – plan view

Consultant

Notes



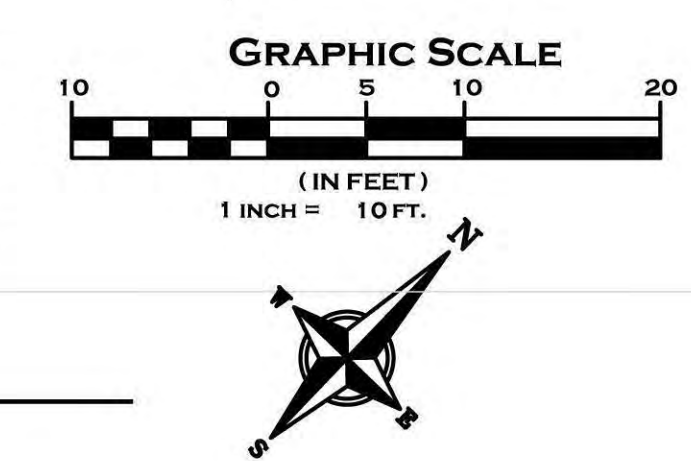
PRELIMINARY
NOT FOR CONSTRUCTION

Revisions
Land Use Application - October 17, 2012
Revised Land Use Drawings - January 24, 2015
Plan Commission - February 4, 2015

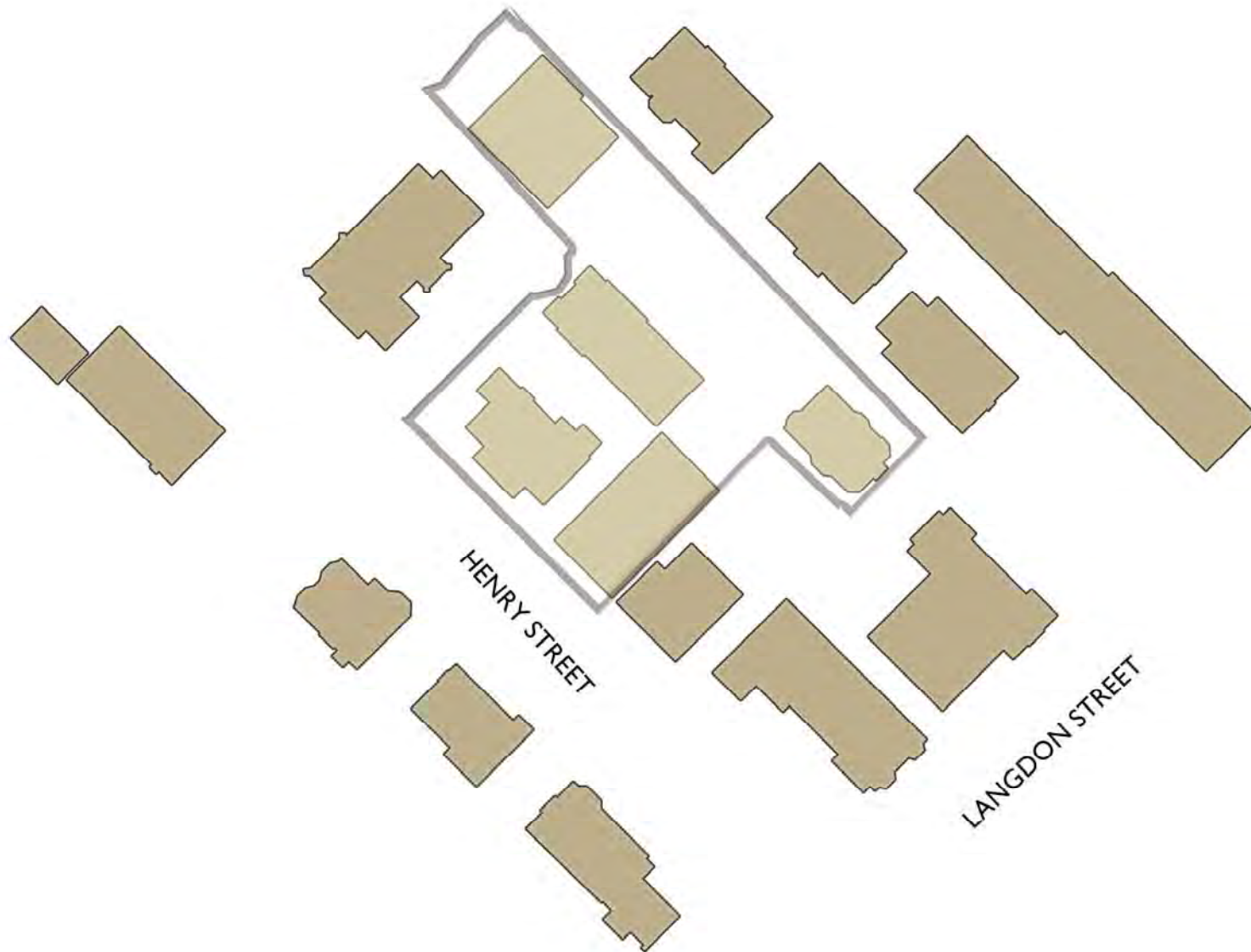
Project Title
Houden - Iota Court

625 N. Henry St.
Drawing Title
Landscape Plan
Project No. 0804 Drawing No. L-1.0

Plant Key	Botanical Name	Common Name	Quantity	Size	Spec	Comments
Deciduous Shade Trees						
AFS	<i>Acer x freemanii</i> 'Sienna'	Sienna Glen Freeman Maple	3	2" Cal	B&B	Single, straight leader, match specimens, branching shall start at 5'-0" min.
GDE	<i>Gymnocladus dioica</i> 'Espresso'	Espresso Kentucky Coffeetree	2	3" Cal	B&B	Other seedless variety acceptable
PC	<i>Prunus celtensis</i> 'Cleveland Select'	Cleveland Select Pear	2	2" Cal	B&B	Single, straight leader, match specimens, branching shall start at 5'-0" min.
Deciduous Ornamental Trees						
ALS	<i>Amelanchier laevis</i> 'JFS-Abz'	Spring Flurry Serviceberry	6	10" Ht	B&B	Single leader
Evergreen Shrubs						
Cpf	<i>Chamaecyparis paifora</i> 'Filtera'	Threadleaf Falsecypress	8	30" Spr	Cont. B&B	5 Gal. min. Space 5' - 6' O.C. Prune to maintain at 7' ht.
Tme	<i>Taxus x media</i> 'Everlow'	Everlow Yew	13	24" Spr	Cont. B&B	5 Gal. min. Space 4'-1/2' - 5' O.C. Prune minimally - maintain natural shape
Deciduous Shrubs						
Ami	<i>Aronia melanocarpa</i> 'Tropics Beauty'	Tropics Beauty Aronia	17	18" Ht	Cont.	Space 2 - 3-1/2' O.C.
Dgn	<i>Deutzia gracilis</i> 'Hikko'	Hikko Slender Deutzia	26	18" Ht	Cont.	Space 2' O.C.
Fgb	<i>Fothergilla gardenii</i> 'Beaver Creek'	Beaver Creek Dwarf Fothergilla	15	18" Ht	Cont.	Space 3' O.C.
Smp	<i>Syringa meyeri</i> 'Palton'	Meyer Lilac	4	3" Ht	Cont.	5 Gal. min. Space 5' O.C.
Perennials/Grasses/Groundcovers						
als	<i>Allium tanguticum</i> 'Summer Beauty'	Summer Beauty Allium	13	1 Qt	Cont.	Space 2' O.C.
bbs	<i>Rapista x bicolor</i> 'Starlite Prairiebloss'	Starlite Prairiebloss Wild Indigo	12	1 Gal	Cont.	Space 2' O.C.
dc	<i>Diarrhena repens</i>	Tufted Hair Grass	24	1 Gal	Cont.	Space 2' O.C.
gcb	<i>Geranium carolinianense</i> 'Blokovo'	Blokovo Cranebill	27	1 Qt	Cont.	Space 2' O.C.
msa	<i>Miscanthus sinensis</i> 'Gracillimus'	Maiden Grass	12	3 Gal	Cont.	Space 3-1/2' O.C.
mcm	<i>Molinia caerulea</i> 'Moorflamme'	Moorflamme Purple Moor Grass	13	1 Qt	Cont.	Space 24" - 30" O.C. 'Moorheex' acceptable
pvn	<i>Panicum virgatum</i> 'Northwind'	Northwind Switch Grass	34	2 Gal	Cont.	Space 2 - 2-1/2' O.C.
saf	<i>Sedum 'Autumn Fire'</i>	Autumn Fire Sedum	22	1 Qt	Cont.	Space 24" O.C.
sa	<i>Sesleria autumnalis</i>	Autumn Moor Grass	78	1 Qt	Cont.	Space 24" O.C.



PLANTING PLAN

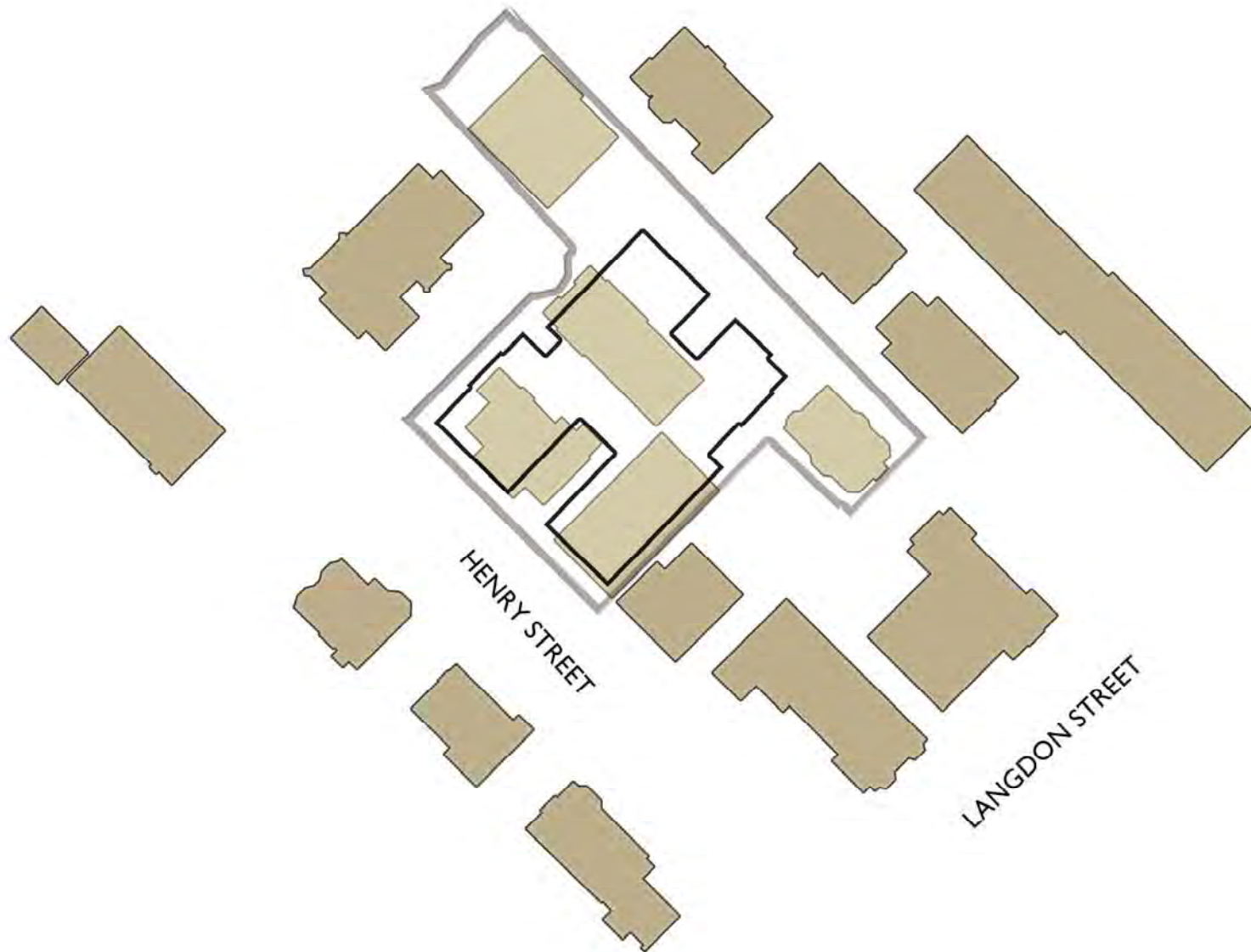


WATERFRONT

Site Plan

February 4, 2013
#0804

KNOTHE
BRUCE
& architects



WATERFRONT

Site Plan

February 4, 2013
#0804

KNOTHE
BRUCE
& architects

