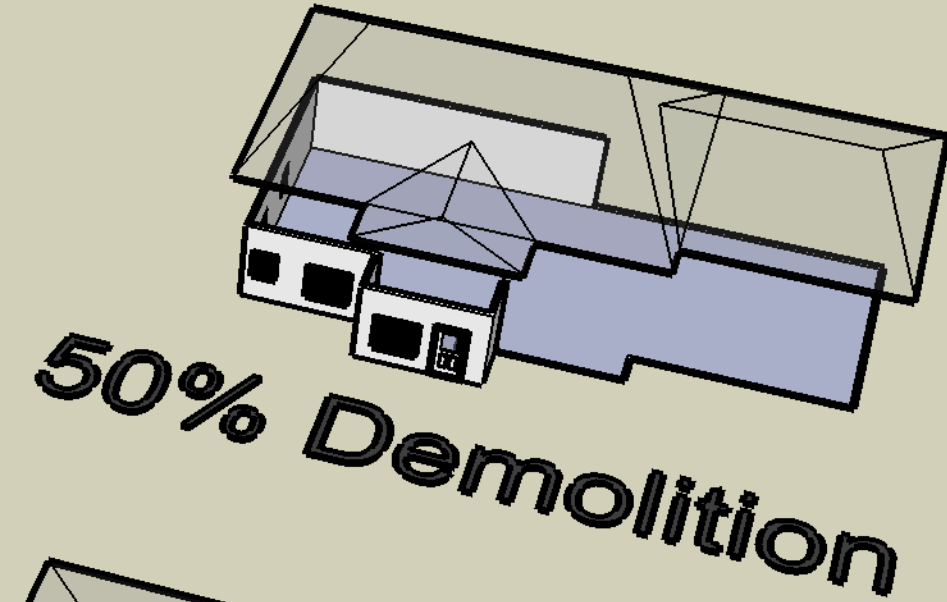
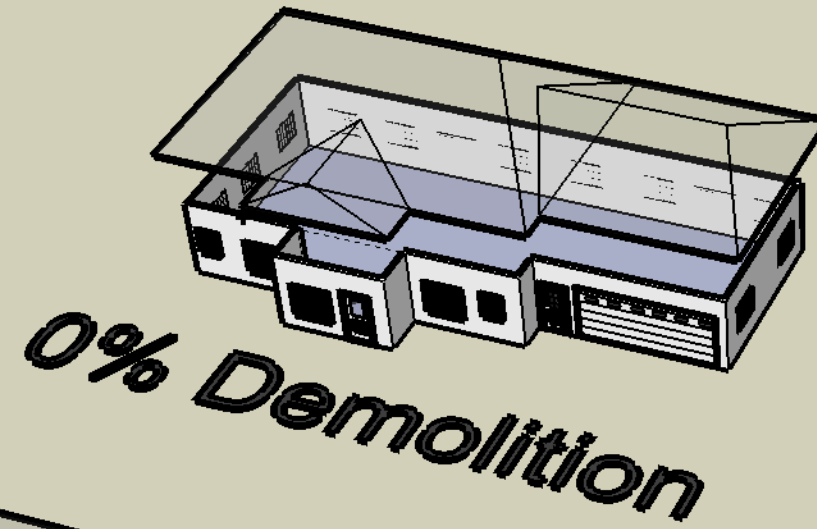


**DRAFT Illustrations  
City of Madison Planning Division  
10.06.08**

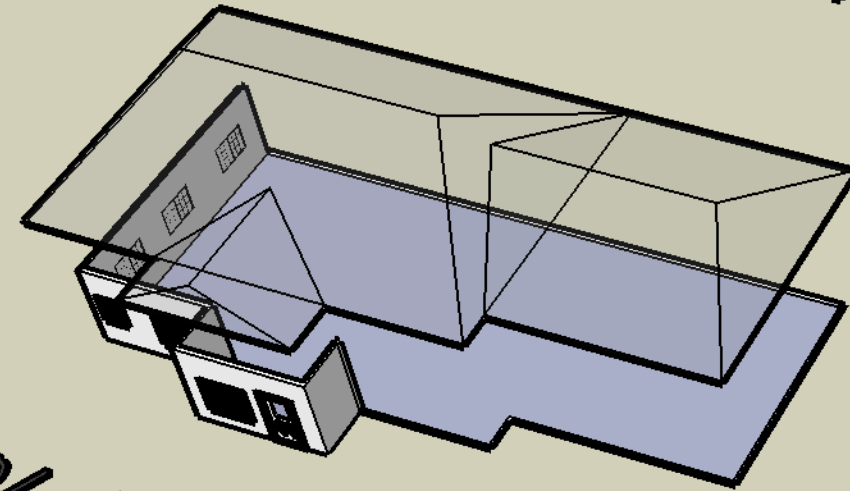
0% Demolition =  
212 Total Linear Wall Feet  
2090 Total Square Feet



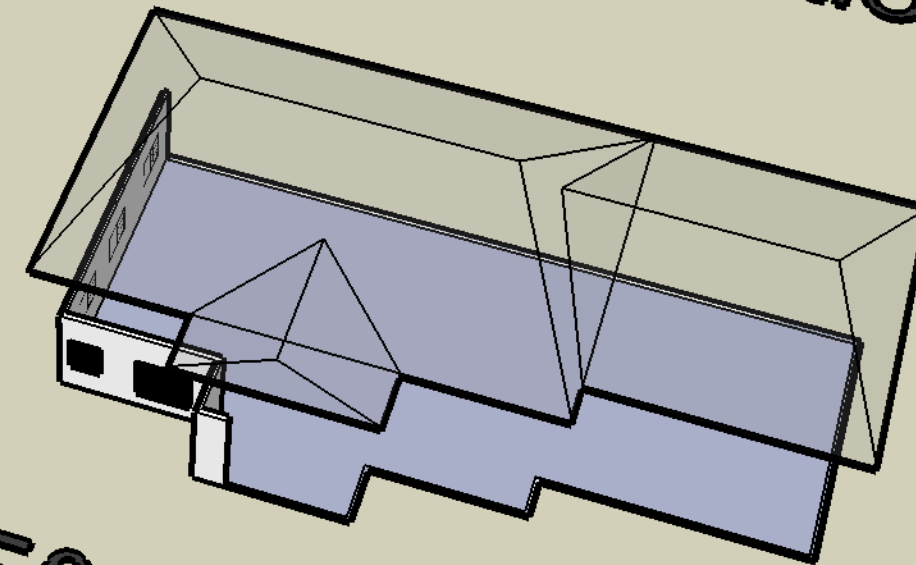
50% Demolition =  
106 Linear Wall Feet Remaining

66% Demolition =  
71 Linear Wall Feet Remaining

75% Demolition =  
53 Linear Wall Feet Remaining



**66% Demolition**



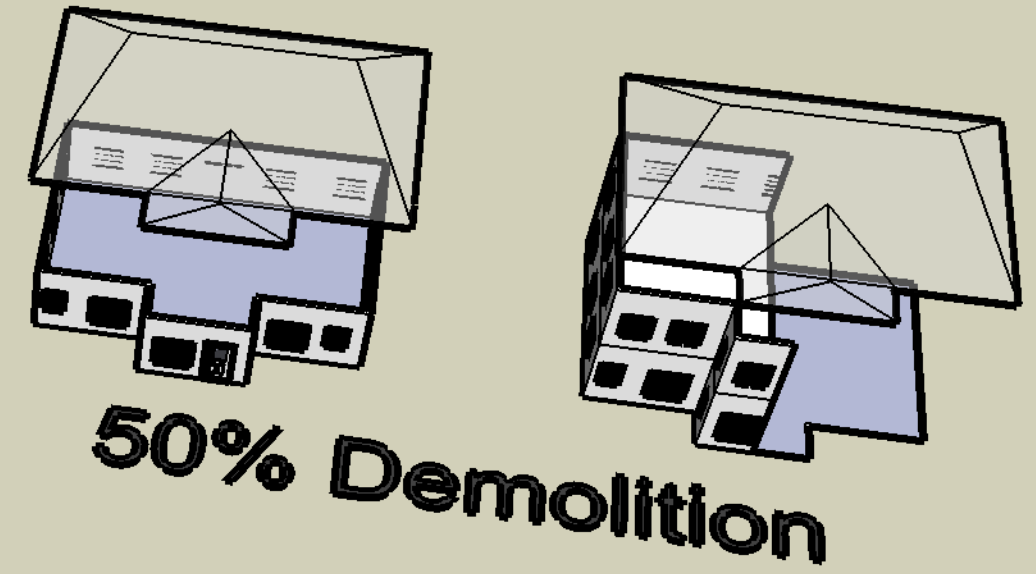
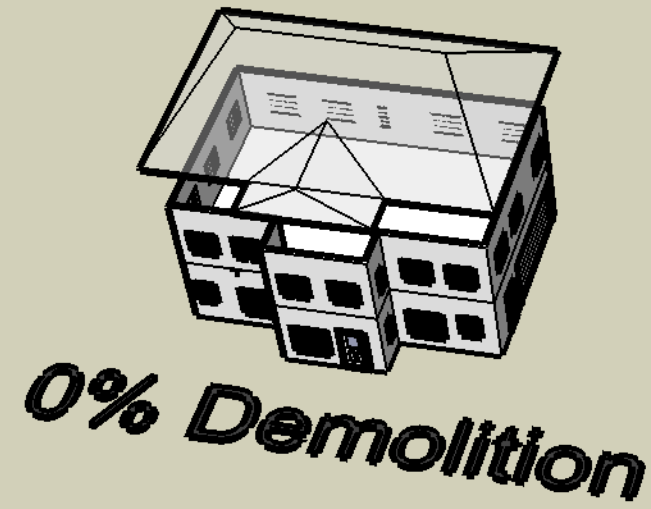
**75% Demolition**

**1-Story Ranch House Wall Demolition**

These examples illustrate different ways that a demolition of 50%, 66% and 75% can be accomplished. For each percentage, the example illustrates demolition of the linear wall area.

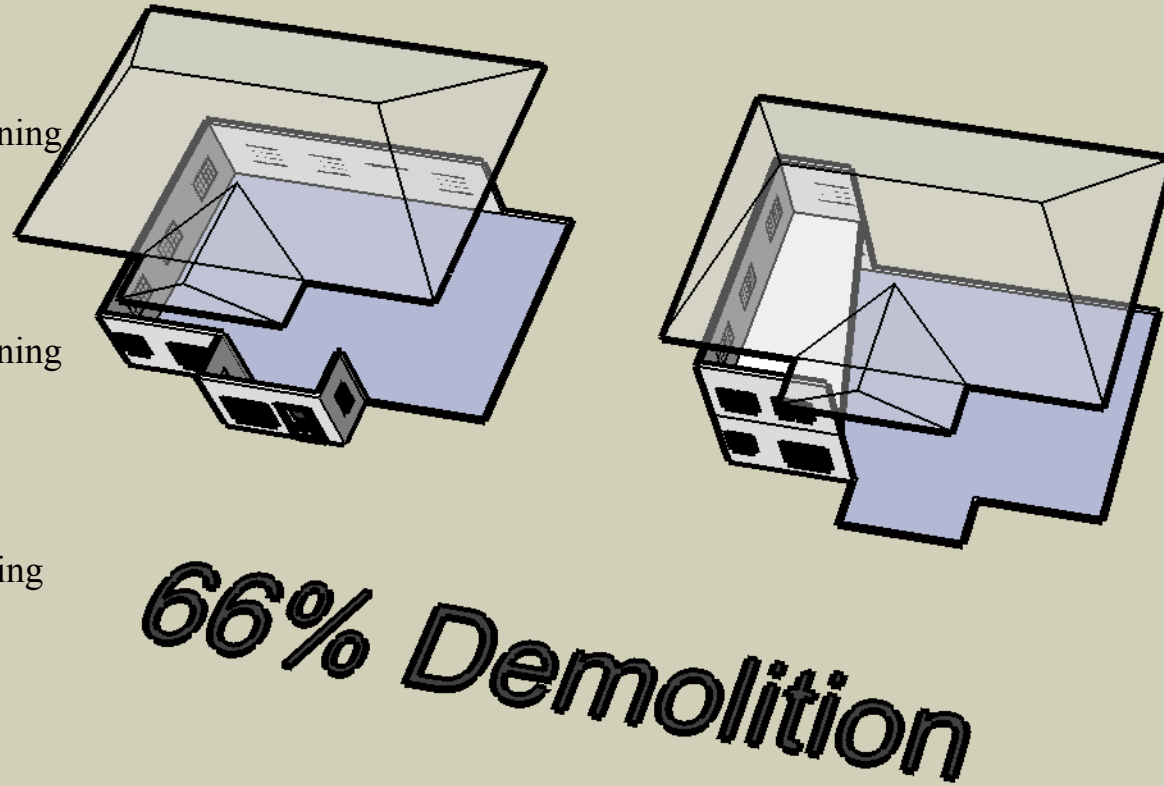
**DRAFT Illustrations  
City of Madison Planning Division  
10.06.08**

0% Demolition =  
324 Total Linear Wall Feet  
2880 Total Square Feet

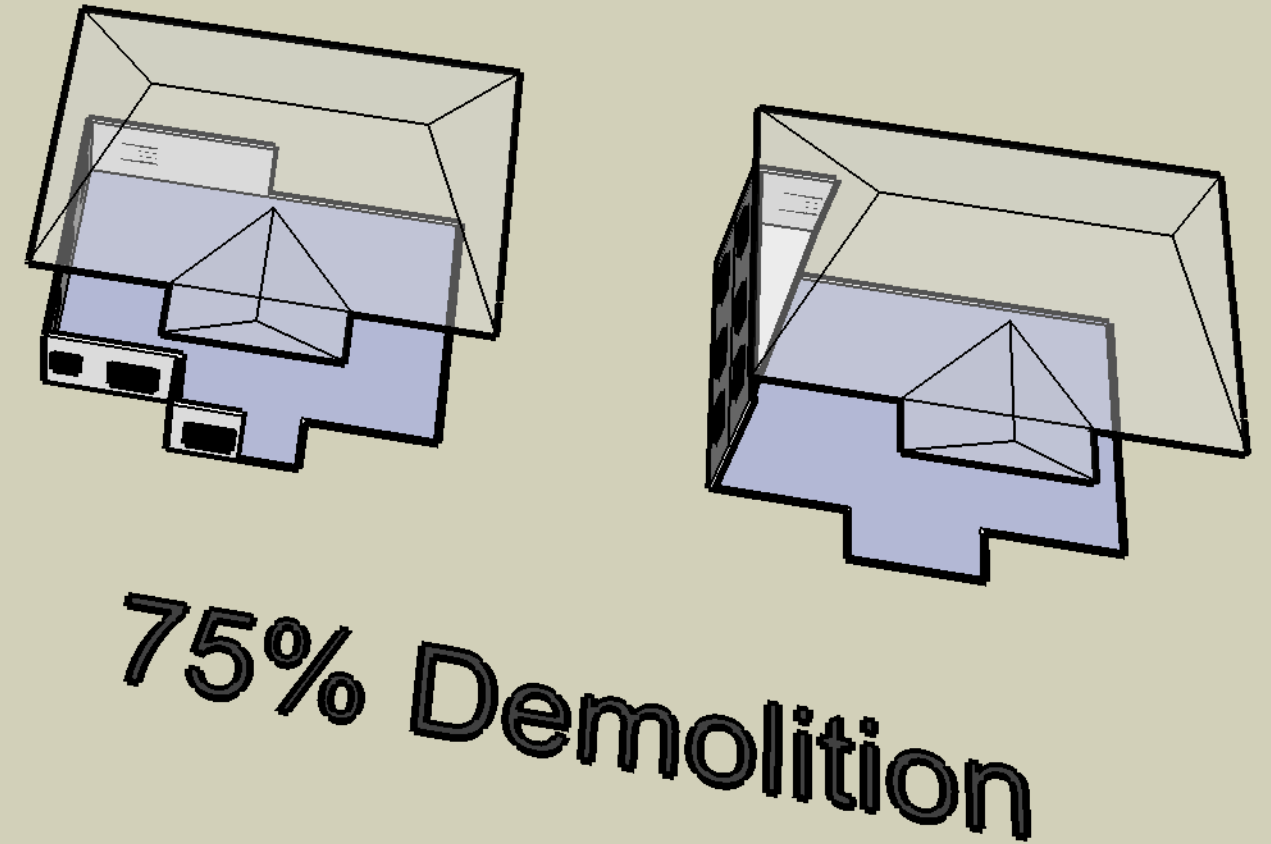


50% Demolition =  
162 Linear Wall Feet Remaining

66% Demolition =  
108 Linear Wall Feet Remaining



75% Demolition =  
81 Linear Wall Feet Remaining



**2-Story House Wall Demolition**

These examples illustrate different ways that a demolition of 50%, 66% and 75% can be accomplished.

For each percentage, one example illustrates demolition of the second floor wall area, plus additional demolition of the first floor wall area if needed.

The other example illustrates equal wall demolition of each floor.