



Madison Gas and Electric Company

P.O. Box 1231

Madison, WI 53701-1231

608-252-7000

your community energy company

January 13, 2026

Sent Via Email

lbrown@cityofmadison.com

Mr. Ian Brown
City of Madison Urban Forestry
Madison Streets Division
1402 Wingra Creek Parkway
Madison WI 53715

Subject: Permit for Utility Line Clearance Pruning and Removal in the Public Right-of-Way

Dear Mr. Brown:

Madison Gas and Electric Company (MGE) hereby applies for a permit to conduct utility line clearance operations including pruning and removal of trees in the public right-of-way of any street, alley, highway, or other area under the jurisdiction of the City of Madison.

MGE has an obligation to perform tree pruning under Chapter PSC 114 of the Wisconsin Administrative Code. This code adopts the National Electric Safety Code for Wisconsin which provides in Section 218 that trees interfering with ungrounded electric supply conductors must be pruned or removed. MGE is required by Chapter PSC 114, adopting this code, to maintain vegetation management services to prevent serious safety hazards caused by trees becoming intertwined with the electrical conductor.

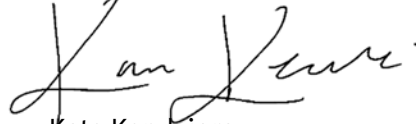
Each tree located in the public right-of-way will be assessed to determine necessary pruning dosage to achieve five years of regrowth clearance. MGE Forestry representatives will contact City Forestry if their limited visual assessment indicates a hazard tree may be present; all hazard trees will be discussed with City Forestry before work begins.

MGE and its contractors will prune or remove trees in accordance with the American National Standards Institute (ANSI) A300 and ANSI Z133.1 tree care operation standards and in accordance with the written guidelines and directives of the City Forester.

Mr. Ian Brown
Page 2
January 13, 2026

Line clearance pruning of City trees in the affected areas will begin following the approval of the Habitat Stewardship Subcommittee and City Forester. The affected areas within the City of Madison proposed for line clearance operations are listed by street name and block numbers. See Exhibit 1.

Sincerely,

A handwritten signature in black ink, appearing to read "Kate Kendziora", with a stylized, cursive script.

Kate Kendziora
Forestry Program Manager

art

Attachment

EXHIBIT 1
2026 Tree Trimming Block Numbers
and Street Names

0 BLOCK OF ANZINGER	0 BLOCK OF WOODVALE	100 BLOCK OF MERLHAM
0 BLOCK OF ASHLAND	0 BLOCK OF N BROOKS	100 BLOCK OF MILTON
0 BLOCK OF BAGLEY	0 BLOCK OF N BRYAN	100 BLOCK OF OHIO
0 BLOCK OF BAYSIDE	0 BLOCK OF N CHARTER	100 BLOCK OF POWERS
0 BLOCK OF BURROWS	0 BLOCK OF N FAIR OAKS	100 BLOCK OF QUAKER
0 BLOCK OF CHEYENNE	0 BLOCK OF N MILLS	100 BLOCK OF RETHKE
0 BLOCK OF CHRISTOPHER	0 BLOCK OF N ROCK	100 BLOCK OF RICHLAND
0 BLOCK OF CORAL	0 BLOCK OF N ROSA	100 BLOCK OF ROSEMARY
0 BLOCK OF CORRY	0 BLOCK OF S BLACKHAWK	100 BLOCK OF RYAN
0 BLOCK OF COYNE	0 BLOCK OF S BRYAN	100 BLOCK OF SILVER
0 BLOCK OF DALEY	0 BLOCK OF S CHARTER	100 BLOCK OF TALMADGE
0 BLOCK OF DIXON	0 BLOCK OF S EAU CLAIRE	100 BLOCK OF WAUBESA
0 BLOCK OF FARWELL	0 BLOCK OF S FAIR OAKS	100 BLOCK OF E DEAN
0 BLOCK OF FULLER	0 BLOCK OF S HILLSIDE	100 BLOCK OF E WINNEQUAH
0 BLOCK OF HARBORT	0 BLOCK OF S KENOSHA	100 BLOCK OF N FAIR OAKS
0 BLOCK OF HARDING	0 BLOCK OF S MARQUETTE	100 BLOCK OF N KENOSHA
0 BLOCK OF IRONWOOD	0 BLOCK OF S MEADOW	100 BLOCK OF N MILLS
0 BLOCK OF KEWAUNEE	0 BLOCK OF S MIDVALE	100 BLOCK OF N MILLS ST SC11
0 BLOCK OF KINGSBURY	0 BLOCK OF S MILLS	100 BLOCK OF N ORCHARD
0 BLOCK OF MARK TWAIN	0 BLOCK OF S ORCHARD	100 BLOCK OF N RANDALL
0 BLOCK OF MERLHAM	0 BLOCK OF S OWEN	100 BLOCK OF N ROSA
0 BLOCK OF OCONTO	0 BLOCK OF S ROCK	100 BLOCK OF S FAIR OAKS
0 BLOCK OF PAGET	0 BLOCK OF S ROSA	100 BLOCK OF S KENOSHA
0 BLOCK OF PARK	0 BLOCK OF S SEGOE	100 BLOCK OF S MARQUETTE
0 BLOCK OF PARKLAWN	100 BLOCK OF BUCKINGHAM	100 BLOCK OF S MIDVALE
0 BLOCK OF POWERS	100 BLOCK OF CARILLON	100 BLOCK OF S MILLS
0 BLOCK OF ROBIN	100 BLOCK OF CORRY	100 BLOCK OF S ROCK
0 BLOCK OF ROSEMARY	100 BLOCK OF DEMPSEY	100 BLOCK OF S ROSA
0 BLOCK OF SHERMAN	100 BLOCK OF DIXON	100 BLOCK OF S SEGOE
0 BLOCK OF VELEN	100 BLOCK OF DUNNING	100 BLOCK OF W LAKEVIEW
0 BLOCK OF WAKEMAN	100 BLOCK OF GARRISON	1000 BLOCK OF ACEWOOD
0 BLOCK OF WALWORTH	100 BLOCK OF GLEN	1000 BLOCK OF HACKBERRY
0 BLOCK OF WAUBESA	100 BLOCK OF HARDING	1000 BLOCK OF HAMPSHIRE
0 BLOCK OF WAUPACA	100 BLOCK OF JACKSON	1000 BLOCK OF MAYFAIR
0 BLOCK OF WAUSHARA	100 BLOCK OF LYNNHAVEN	1000 BLOCK OF MERRILL SPRINGS
0 BLOCK OF WHITE OAKS	100 BLOCK OF MARINETTE	1000 BLOCK OF MOORLAND
0 BLOCK OF WIRTH	100 BLOCK OF MEMPHIS	1000 BLOCK OF REGENT

EXHIBIT 1
2026 Tree Trimming Block Numbers
and Street Names

1000 BLOCK OF SEQUOIA	1200 BLOCK OF MACARTHUR	1600 BLOCK OF CAPITAL
1000 BLOCK OF SPRING	1200 BLOCK OF MEADOWLARK	1600 BLOCK OF GILBERT
1000 BLOCK OF UNIVERSITY	1200 BLOCK OF MENDOTA	1600 BLOCK OF GOLDEN OAK
1000 BLOCK OF VERNON	1200 BLOCK OF MINTON	1600 BLOCK OF MENDOTA
1000 BLOCK OF W BADGER	1200 BLOCK OF REGENT	1600 BLOCK OF NORMAN
1000 BLOCK OF W DAYTON	1200 BLOCK OF SPRING	1600 BLOCK OF RAE
1100 BLOCK OF ACEWOOD	1200 BLOCK OF TIMOTHY	1600 BLOCK OF ROWLAND
1100 BLOCK OF BONNIE	1200 BLOCK OF WOODVALE	1600 BLOCK OF SCHMEDEMAN
1100 BLOCK OF BOWEN	1300 BLOCK OF ACEWOOD	1600 BLOCK OF SHERMAN
1100 BLOCK OF BROOKWOOD	1300 BLOCK OF CHERRY	1600 BLOCK OF S WHITNEY
1100 BLOCK OF CHAPEL HILL	1300 BLOCK OF LARSON	1700 BLOCK OF CAMERON
1100 BLOCK OF FLEETWOOD	1300 BLOCK OF LYNNDALE	1700 BLOCK OF GOLDEN OAK
1100 BLOCK OF FRISCH	1300 BLOCK OF MACARTHUR	1700 BLOCK OF HEIM
1100 BLOCK OF HACKBERRY	1300 BLOCK OF MEADOWLARK	1700 BLOCK OF LYNNDALE
1100 BLOCK OF HATHAWAY	1300 BLOCK OF MENDOTA	1700 BLOCK OF MOORLAND
1100 BLOCK OF LUMBERMANS	1300 BLOCK OF RANDALL	1700 BLOCK OF RAE
1100 BLOCK OF MARG	1300 BLOCK OF REGENT	1700 BLOCK OF REDWOOD
1100 BLOCK OF MEADOWLARK	1300 BLOCK OF ROSEDALE	1700 BLOCK OF ROWLAND
1100 BLOCK OF MENDOTA	1300 BLOCK OF TEMKIN	1700 BLOCK OF S WHITNEY
1100 BLOCK OF MILTON	1300 BLOCK OF THERESA	1800 BLOCK OF CAMELOT
1100 BLOCK OF MINOCQUA	1300 BLOCK OF TIMOTHY	1800 BLOCK OF GILBERT
1100 BLOCK OF MINTON	1300 BLOCK OF WOODVALE	1800 BLOCK OF PRAIRIE
1100 BLOCK OF REGENT	1300 BLOCK OF W DAYTON	1800 BLOCK OF S WHITNEY
1100 BLOCK OF SPRING	1400 BLOCK OF ACEWOOD	1900 BLOCK OF FORDEM
1100 BLOCK OF TIMOTHY	1400 BLOCK OF ANGEL CREST	1900 BLOCK OF GILBERT
1100 BLOCK OF TOMAHAWK	1400 BLOCK OF LYNNDALE	1900 BLOCK OF RAE
1100 BLOCK OF VERNON	1400 BLOCK OF MACARTHUR	1900 BLOCK OF SHERMAN
1100 BLOCK OF WILLOW	1400 BLOCK OF MONROE	200 BLOCK OF BERNARD
1100 BLOCK OF WINSTON	1400 BLOCK OF REINDAHL	200 BLOCK OF BORDNER
1100 BLOCK OF WOODVALE	1400 BLOCK OF VONDRON	200 BLOCK OF BUCKINGHAM
1100 BLOCK OF W BADGER	1400 BLOCK OF WOODVALE	200 BLOCK OF DEMPSEY
1200 BLOCK OF ACEWOOD	1400 BLOCK OF E SKYLINE	200 BLOCK OF DIXON
1200 BLOCK OF BOWEN	1500 BLOCK OF CAMERON	200 BLOCK OF GANNON
1200 BLOCK OF BROOKWOOD	1500 BLOCK OF CAPITAL	200 BLOCK OF GLEN
1200 BLOCK OF CHAPEL HILL	1500 BLOCK OF MENDOTA	200 BLOCK OF HARDING
1200 BLOCK OF FRISCH	1500 BLOCK OF RAE	200 BLOCK OF LYNNHAVEN
1200 BLOCK OF JUNIPER	1600 BLOCK OF CAMERON	200 BLOCK OF MALONEY

EXHIBIT 1
2026 Tree Trimming Block Numbers
and Street Names

200 BLOCK OF MEMPHIS	2400 BLOCK OF LA FOLLETTE	300 BLOCK OF BUCKINGHAM
200 BLOCK OF POWERS	2400 BLOCK OF MONROE	300 BLOCK OF CHEYENNE
200 BLOCK OF RETHKE	2500 BLOCK OF	300 BLOCK OF DEMPSEY
200 BLOCK OF RICHLAND	COMMONWEALTH	300 BLOCK OF ELMSIDE
200 BLOCK OF ROSEMARY	2500 BLOCK OF GREENWAY	300 BLOCK OF GLEN
200 BLOCK OF SAINT CROIX	2500 BLOCK OF GREGORY	300 BLOCK OF LANCE
200 BLOCK OF SILVER	2500 BLOCK OF MONROE	300 BLOCK OF MALONEY
200 BLOCK OF TYLER	2600 BLOCK OF GOLDEN GATE	300 BLOCK OF MAPLE
200 BLOCK OF WARNER	2600 BLOCK OF GREGORY	300 BLOCK OF MEMPHIS
200 BLOCK OF WAUBESA	2600 BLOCK OF LA FOLLETTE	300 BLOCK OF ORCHARD
200 BLOCK OF E COLDSPRING	2600 BLOCK OF MILWAUKEE	300 BLOCK OF POWERS
200 BLOCK OF E DEAN	2600 BLOCK OF MONROE	300 BLOCK OF RACINE
200 BLOCK OF E WINNEQUAH	2600 BLOCK OF NORTH	300 BLOCK OF RETHKE
200 BLOCK OF N BLACKHAWK	2600 BLOCK OF RIMROCK	300 BLOCK OF ROBIN
200 BLOCK OF N BROOKS	2600 BLOCK OF SAINT PAUL	300 BLOCK OF SETH
200 BLOCK OF N CHARTER	2600 BLOCK OF SOUTH	300 BLOCK OF E COLDSPRING
200 BLOCK OF N FAIR OAKS	2700 BLOCK OF GOLDEN GATE	300 BLOCK OF E DEAN
200 BLOCK OF N HILLSIDE	2700 BLOCK OF GREGORY	300 BLOCK OF N HILLSIDE
200 BLOCK OF N MEADOW	2700 BLOCK OF LA FOLLETTE	300 BLOCK OF N MEADOW
200 BLOCK OF N MIDVALE	2700 BLOCK OF LONGVIEW	300 BLOCK OF N MIDVALE
200 BLOCK OF N OWEN	2700 BLOCK OF MILWAUKEE	300 BLOCK OF N OWEN
200 BLOCK OF N ROSA	2700 BLOCK OF MONROE	300 BLOCK OF N RANDALL
200 BLOCK OF N SHERMAN	2700 BLOCK OF RIMROCK	300 BLOCK OF N ROSA
200 BLOCK OF S FAIR OAKS	2700 BLOCK OF SAINT PAUL	300 BLOCK OF N SHERMAN
200 BLOCK OF S KENOSHA	2800 BLOCK OF ATWOOD	300 BLOCK OF S MIDVALE
200 BLOCK OF S MARQUETTE	2800 BLOCK OF FOXWOOD	300 BLOCK OF S SEGOE
200 BLOCK OF S MIDVALE	2800 BLOCK OF GREGORY	300 BLOCK OF W LAKEVIEW
200 BLOCK OF S SEGOE	2800 BLOCK OF MILWAUKEE	3000 BLOCK OF ATWOOD
200 BLOCK OF W LAKEVIEW	2800 BLOCK OF MONROE	3000 BLOCK OF CHURCHILL
2000 BLOCK OF SHERMAN	2800 BLOCK OF OAKRIDGE	3000 BLOCK OF FAIRVIEW
2100 BLOCK OF FORDEM	2800 BLOCK OF SOMMERS	3000 BLOCK OF GATEWAY
2200 BLOCK OF CATALPA	2900 BLOCK OF ATWOOD	3000 BLOCK OF GREGORY
2200 BLOCK OF LA FOLLETTE	2900 BLOCK OF FAIRVIEW	3000 BLOCK OF HERMINA
2300 BLOCK OF LA FOLLETTE	2900 BLOCK OF GREGORY	3000 BLOCK OF MILWAUKEE
2400 BLOCK OF CATALPA	2900 BLOCK OF MILWAUKEE	3000 BLOCK OF OAKRIDGE
2400 BLOCK OF	2900 BLOCK OF OAKRIDGE	3100 BLOCK OF ATWOOD
COMMONWEALTH	2900 BLOCK OF SAINT PAUL	3100 BLOCK OF BUENA VISTA
2400 BLOCK OF GREGORY	300 BLOCK OF BORDNER	

EXHIBIT 1
2026 Tree Trimming Block Numbers
and Street Names

3100 BLOCK OF CENTER	3300 BLOCK OF FUREY	3700 BLOCK OF SUSSEX
3100 BLOCK OF CHURCHILL	3300 BLOCK OF IVY	3700 BLOCK OF WILSHIRE
3100 BLOCK OF COMMERCIAL	3300 BLOCK OF LEXINGTON	3800 BLOCK OF ANCHOR
3100 BLOCK OF CROSS	3300 BLOCK OF MILWAUKEE	3800 BLOCK OF DAWES
3100 BLOCK OF DALEY	3300 BLOCK OF THORP	3800 BLOCK OF DENNETT
3100 BLOCK OF EMMET	3300 BLOCK OF THURBER	3800 BLOCK OF HOOVER
3100 BLOCK OF FUREY	3300 BLOCK OF WEBB	3800 BLOCK OF MARGARET
3100 BLOCK OF GREGORY	3300 BLOCK OF WELLS	3800 BLOCK OF PAUS
3100 BLOCK OF HERMINA	3400 BLOCK OF BURKE	3800 BLOCK OF RICHARD
3100 BLOCK OF JAMES	3400 BLOCK OF CONCORD	3800 BLOCK OF RIDGEWAY
3100 BLOCK OF LAKELAND	3400 BLOCK OF FUREY	3800 BLOCK OF SYCAMORE
3100 BLOCK OF LINDBERGH	3400 BLOCK OF GRACELAND	3800 BLOCK OF TULANE
3100 BLOCK OF MILWAUKEE	3400 BLOCK OF HOME	3800 BLOCK OF E WASHINGTON
3100 BLOCK OF OAKRIDGE	3400 BLOCK OF LEXINGTON	3900 BLOCK OF ANCHOR
3100 BLOCK OF SAINT PAUL	3400 BLOCK OF WEBB	3900 BLOCK OF CALVERT
3100 BLOCK OF THORP	3500 BLOCK OF ALBERT	3900 BLOCK OF DENNETT
3100 BLOCK OF THURBER	3500 BLOCK OF BURKE	3900 BLOCK OF HYNEK
3100 BLOCK OF WEBB	3500 BLOCK OF COMMERCIAL	3900 BLOCK OF MARGARET
3100 BLOCK OF WORTHINGTON	3500 BLOCK OF CONCORD	3900 BLOCK OF PAUS
3200 BLOCK OF ATWOOD	3500 BLOCK OF DAWES	3900 BLOCK OF ROCKWELL
3200 BLOCK OF BURKE	3500 BLOCK OF FUREY	3900 BLOCK OF SYCAMORE
3200 BLOCK OF CENTER	3500 BLOCK OF GRACELAND	3900 BLOCK OF TULANE
3200 BLOCK OF CHURCHILL	3500 BLOCK OF HEATHER	400 BLOCK OF AGNES
3200 BLOCK OF COMMERCIAL	3500 BLOCK OF LEXINGTON	400 BLOCK OF BORDNER
3200 BLOCK OF CROSS	3500 BLOCK OF LUCIA	400 BLOCK OF CHARLES
3200 BLOCK OF FUREY	3500 BLOCK OF PRAIRIE	400 BLOCK OF DEMPSEY
3200 BLOCK OF GREGORY	3500 BLOCK OF RICHARD	400 BLOCK OF ELMSIDE
3200 BLOCK OF JAMES	3500 BLOCK OF RIDGEWAY	400 BLOCK OF GANNON
3200 BLOCK OF MILWAUKEE	3500 BLOCK OF UNIVERSITY	400 BLOCK OF GUNDERSON
3200 BLOCK OF OAKRIDGE	3500 BLOCK OF WEBB	400 BLOCK OF LANCE
3200 BLOCK OF THORP	3500 BLOCK OF E WASHINGTON	400 BLOCK OF LUDINGTON
3200 BLOCK OF THURBER	3600 BLOCK OF BRIGHAM	400 BLOCK OF MAPLE
3200 BLOCK OF WEBB	3600 BLOCK OF LARSON	400 BLOCK OF MEMPHIS
3200 BLOCK OF WORTHINGTON	3700 BLOCK OF DENNETT	400 BLOCK OF ORCHARD
3300 BLOCK OF BURKE	3700 BLOCK OF OLBRICH	400 BLOCK OF POWERS
3300 BLOCK OF CHICAGO	3700 BLOCK OF PAUS	400 BLOCK OF RETHKE
3300 BLOCK OF COMMERCIAL	3700 BLOCK OF RICHARD	400 BLOCK OF ROSEMARY

EXHIBIT 1
2026 Tree Trimming Block Numbers
and Street Names

400 BLOCK OF TOGSTAD	4500 BLOCK OF WOODS	4800 BLOCK OF FERRIS
400 BLOCK OF WELCH	4600 BLOCK OF ACADEMY	4800 BLOCK OF FOND DU LAC
400 BLOCK OF WOODSIDE	4600 BLOCK OF AMES	4800 BLOCK OF LEO
400 BLOCK OF E DEAN	4600 BLOCK OF ELDORADO	4800 BLOCK OF MARATHON
400 BLOCK OF N FAIR OAKS	4600 BLOCK OF FEMRITE	4800 BLOCK OF MEREDITHE
400 BLOCK OF N MEADOW	4600 BLOCK OF FERRIS	4800 BLOCK OF REGENT
400 BLOCK OF N MIDVALE	4600 BLOCK OF GREGG	4800 BLOCK OF SOUTH HILL
400 BLOCK OF N OWEN	4600 BLOCK OF KEATING	4800 BLOCK OF STARKER
400 BLOCK OF N ROSA	4600 BLOCK OF LEO	4800 BLOCK OF STEINHAUER
400 BLOCK OF N SHERMAN	4600 BLOCK OF MEREDITHE	4800 BLOCK OF WAUKESHA
400 BLOCK OF S MIDVALE	4600 BLOCK OF MINERAL POINT	4900 BLOCK OF ACADEMY
400 BLOCK OF W LAKEVIEW	4600 BLOCK OF REGENT	4900 BLOCK OF BAYFIELD
4000 BLOCK OF ANCHOR	4600 BLOCK OF STARKER	4900 BLOCK OF ELLESTAD
4000 BLOCK OF LORI	4600 BLOCK OF STEINHAUER	4900 BLOCK OF FOND DU LAC
4000 BLOCK OF ROCKWELL	4600 BLOCK OF TOKAY	4900 BLOCK OF MARATHON
4000 BLOCK OF STEINIES	4600 BLOCK OF WAUKESHA	4900 BLOCK OF REGENT
4100 BLOCK OF JEROME	4700 BLOCK OF ACADEMY	4900 BLOCK OF SOUTH HILL
4100 BLOCK OF MONONA	4700 BLOCK OF AMES	4900 BLOCK OF STARKER
4200 BLOCK OF JEROME	4700 BLOCK OF COTTAGE GROVE	4900 BLOCK OF WAUKESHA
4200 BLOCK OF MONONA	4700 BLOCK OF ELDORADO	500 BLOCK OF BORDNER
4300 BLOCK OF BAGLEY	4700 BLOCK OF ELLESTAD	500 BLOCK OF CHARLES
4300 BLOCK OF REGENT	4700 BLOCK OF FEMRITE	500 BLOCK OF CHRISTIANSON
4400 BLOCK OF COTTAGE GROVE	4700 BLOCK OF FERRIS	500 BLOCK OF DEMPSEY
4400 BLOCK OF HILLCREST	4700 BLOCK OF FOND DU LAC	500 BLOCK OF ELMSIDE
4400 BLOCK OF KEATING	4700 BLOCK OF KEATING	500 BLOCK OF GANNON
4400 BLOCK OF MINERAL POINT	4700 BLOCK OF LAFAYETTE	500 BLOCK OF GUNDERSON
4400 BLOCK OF TOKAY	4700 BLOCK OF LEO	500 BLOCK OF JACOBSON
4400 BLOCK OF WOODS	4700 BLOCK OF MEREDITHE	500 BLOCK OF LUDINGTON
4500 BLOCK OF AMES	4700 BLOCK OF MINERAL POINT	500 BLOCK OF MAPLE
4500 BLOCK OF COTTAGE GROVE	4700 BLOCK OF REGENT	500 BLOCK OF MEMPHIS
4500 BLOCK OF FEMRITE	4700 BLOCK OF STARKER	500 BLOCK OF ORCHARD
4500 BLOCK OF FERRIS	4700 BLOCK OF STEINHAUER	500 BLOCK OF PIPER
4500 BLOCK OF GREGG	4700 BLOCK OF WAUKESHA	500 BLOCK OF POWERS
4500 BLOCK OF KEATING	4800 BLOCK OF ACADEMY	500 BLOCK OF RETHKE
4500 BLOCK OF LEO	4800 BLOCK OF BAYFIELD	500 BLOCK OF SHELDON
4500 BLOCK OF MINERAL POINT	4800 BLOCK OF ELDORADO	500 BLOCK OF TOGSTAD
4500 BLOCK OF TOKAY	4800 BLOCK OF ELLESTAD	500 BLOCK OF WELCH

EXHIBIT 1
2026 Tree Trimming Block Numbers
and Street Names

500 BLOCK OF WOODSIDE	5400 BLOCK OF RUSSETT	5900 BLOCK OF OLD SAUK
500 BLOCK OF E DEAN	5400 BLOCK OF SOUTH HILL	5900 BLOCK OF PIPING ROCK
500 BLOCK OF N FAIR OAKS	5400 BLOCK OF TREMPLEAU	5900 BLOCK OF RAYMOND
500 BLOCK OF N MEADOW	5500 BLOCK OF BELIN	600 BLOCK OF BALTZELL
500 BLOCK OF N MIDVALE	5500 BLOCK OF GETTLE	600 BLOCK OF BORDNER
500 BLOCK OF N OWEN	5500 BLOCK OF MARCONI	600 BLOCK OF CHAPMAN
500 BLOCK OF N ROSA	5500 BLOCK OF MARSHA	600 BLOCK OF CHRISTIANSON
500 BLOCK OF N SHERMAN	5500 BLOCK OF PARK	600 BLOCK OF CRANDALL
500 BLOCK OF N WHITNEY	5500 BLOCK OF RAYMOND	600 BLOCK OF DEMPSEY
500 BLOCK OF S MIDVALE	5500 BLOCK OF REGENT	600 BLOCK OF ELMSIDE
5000 BLOCK OF ACADEMY	5500 BLOCK OF RUSSETT	600 BLOCK OF FAIRMONT
5000 BLOCK OF BAYFIELD	5500 BLOCK OF SOUTH HILL	600 BLOCK OF GANNON
5000 BLOCK OF FLAMBEAU	5500 BLOCK OF STADIUM	600 BLOCK OF GILMORE
5000 BLOCK OF IRONWOOD	5500 BLOCK OF TERRE HAUTE	600 BLOCK OF GUNDERSON
5000 BLOCK OF LA CROSSE	5500 BLOCK OF TESLA	600 BLOCK OF JACOBSON
5000 BLOCK OF MANITOWOC	5500 BLOCK OF TREMPLEAU	600 BLOCK OF KNICKERBOCKER
5000 BLOCK OF MARATHON	5500 BLOCK OF VARSITY	600 BLOCK OF MAYFAIR
5000 BLOCK OF OLD MIDDLETON	5600 BLOCK OF ELDER	600 BLOCK OF MEMPHIS
5000 BLOCK OF SHEBOYGAN	5600 BLOCK OF RAYMOND	600 BLOCK OF PICKFORD
5000 BLOCK OF SOUTH HILL	5600 BLOCK OF REGENT	600 BLOCK OF POWERS
5000 BLOCK OF STARKER	5600 BLOCK OF SOUTH HILL	600 BLOCK OF RETHKE
5000 BLOCK OF TOMAHAWK	5600 BLOCK OF STADIUM	600 BLOCK OF SHELDON
5000 BLOCK OF VOGES	5600 BLOCK OF TREMPLEAU	600 BLOCK OF SPRAGUE
5100 BLOCK OF ACADEMY	5600 BLOCK OF VARSITY	600 BLOCK OF WELCH
5100 BLOCK OF FLAMBEAU	5700 BLOCK OF ARBOR VITAE	600 BLOCK OF WESTERN
5100 BLOCK OF MARATHON	5700 BLOCK OF BARTLETT	600 BLOCK OF N BLACKHAWK
5100 BLOCK OF PEPIN	5700 BLOCK OF BARTON	600 BLOCK OF N FAIR OAKS
5100 BLOCK OF STARKER	5700 BLOCK OF BITTERSWEET	600 BLOCK OF N MEADOW
5100 BLOCK OF TOMAHAWK	5700 BLOCK OF CEDAR	600 BLOCK OF N MIDVALE
5100 BLOCK OF VOGES	5700 BLOCK OF DOGWOOD	600 BLOCK OF N ROSA
5200 BLOCK OF BARTON	5700 BLOCK OF ELDER	6000 BLOCK OF BIRCH HILL
5200 BLOCK OF FLAD	5700 BLOCK OF FORSYTHIA	6000 BLOCK OF HAMMERSLEY
5200 BLOCK OF PEPIN	5700 BLOCK OF OLD SAUK	6000 BLOCK OF OLD MIDDLETON
5400 BLOCK OF BARTON	5800 BLOCK OF CRABAPPLE	6000 BLOCK OF PIPING ROCK
5400 BLOCK OF MARSHA	5800 BLOCK OF OLD SAUK	6000 BLOCK OF RAYMOND
5400 BLOCK OF RAYMOND	5800 BLOCK OF YORKSHIRE	6100 BLOCK OF BARTON
5400 BLOCK OF REGENT	5900 BLOCK OF OLD MIDDLETON	6100 BLOCK OF BIRCH HILL

EXHIBIT 1
2026 Tree Trimming Block Numbers
and Street Names

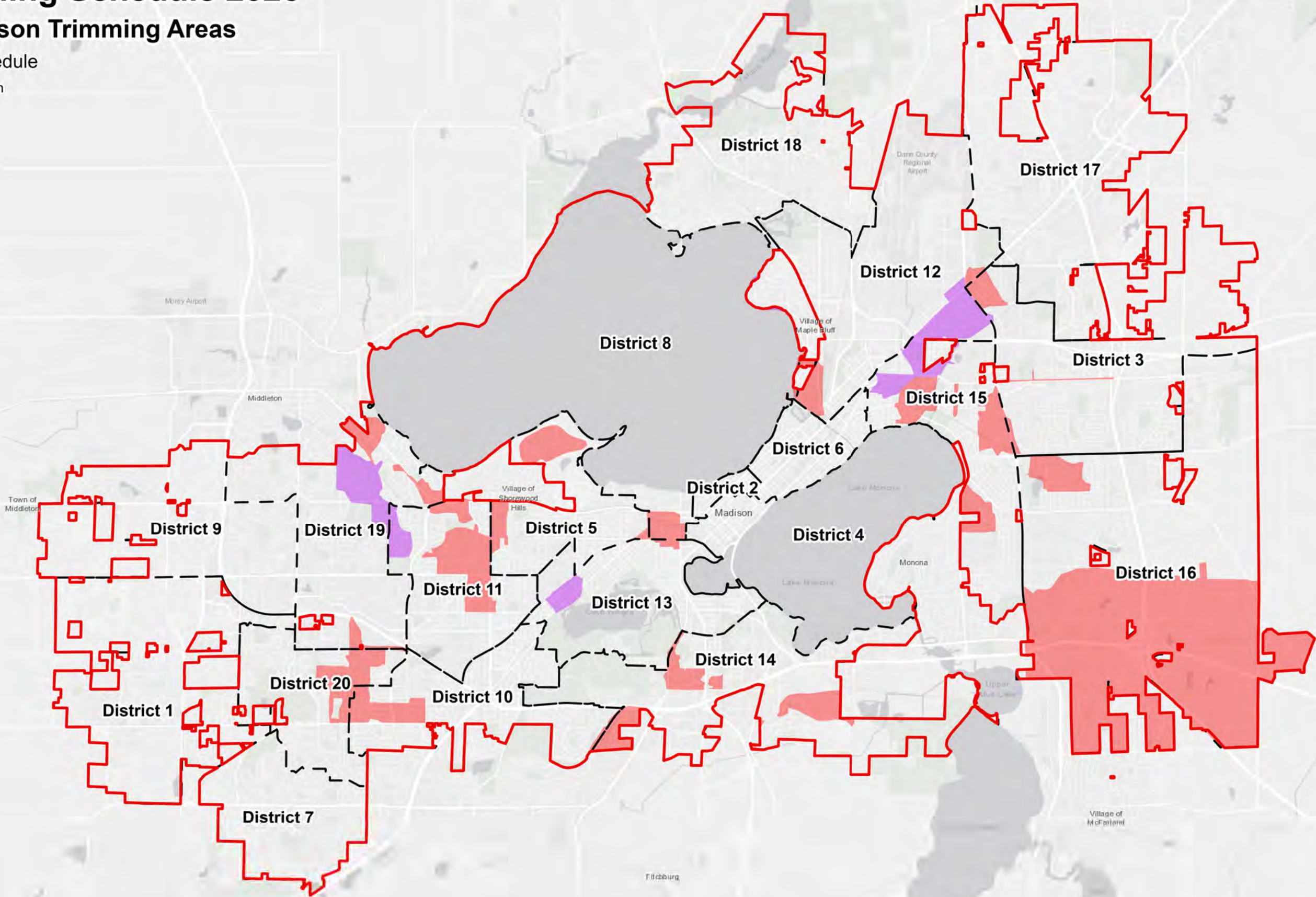
6100 BLOCK OF DAVENPORT	800 BLOCK OF POWERS
6100 BLOCK OF OLD MIDDLETON	800 BLOCK OF RIDGEWOOD
6100 BLOCK OF STRATHMORE	800 BLOCK OF ROYSTER OAKS
6200 BLOCK OF BIRCH HILL	800 BLOCK OF SILAS
6200 BLOCK OF LOMAX	800 BLOCK OF N FAIR OAKS
6200 BLOCK OF OLD MIDDLETON	800 BLOCK OF W BADGER
6200 BLOCK OF STRATHMORE	900 BLOCK OF DEMPSEY
6200 BLOCK OF S HIGHLANDS	900 BLOCK OF FAIRMONT
6300 BLOCK OF WOODINGTON	900 BLOCK OF GREENWICH
6500 BLOCK OF BETTYS	900 BLOCK OF HAMPSHIRE
6500 BLOCK OF SUTTON	900 BLOCK OF MAGNOLIA
6600 BLOCK OF MONTCLAIR	900 BLOCK OF MAYFAIR
700 BLOCK OF BALTZELL	900 BLOCK OF MERRILL SPRINGS
700 BLOCK OF BERGEN	900 BLOCK OF MOORLAND
700 BLOCK OF BRUCE	900 BLOCK OF REGENT
700 BLOCK OF CHAPMAN	900 BLOCK OF SEQUOIA
700 BLOCK OF CHRISTIANSON	900 BLOCK OF N FAIR OAKS
700 BLOCK OF DEMPSEY	900 BLOCK OF W BADGER
700 BLOCK OF FAIRMONT	900 BLOCK OF W DAYTON
700 BLOCK OF GANNON	
700 BLOCK OF GILMORE	
700 BLOCK OF JACOBSON	
700 BLOCK OF MAYFAIR	
700 BLOCK OF MOORLAND	
700 BLOCK OF ONTARIO	
700 BLOCK OF PICKFORD	
700 BLOCK OF POWERS	
700 BLOCK OF N FAIR OAKS	
700 BLOCK OF N MEADOW	
700 BLOCK OF N MIDVALE	
800 BLOCK OF CHRISTIANSON	
800 BLOCK OF DEMPSEY	
800 BLOCK OF GANNON	
800 BLOCK OF JACOBSON	
800 BLOCK OF MAYFAIR	
800 BLOCK OF MERRILL SPRINGS	
800 BLOCK OF MOORLAND	

Tree Pruning Schedule 2026

City of Madison Trimming Areas

Pruning Schedule

- Construction
- Planned



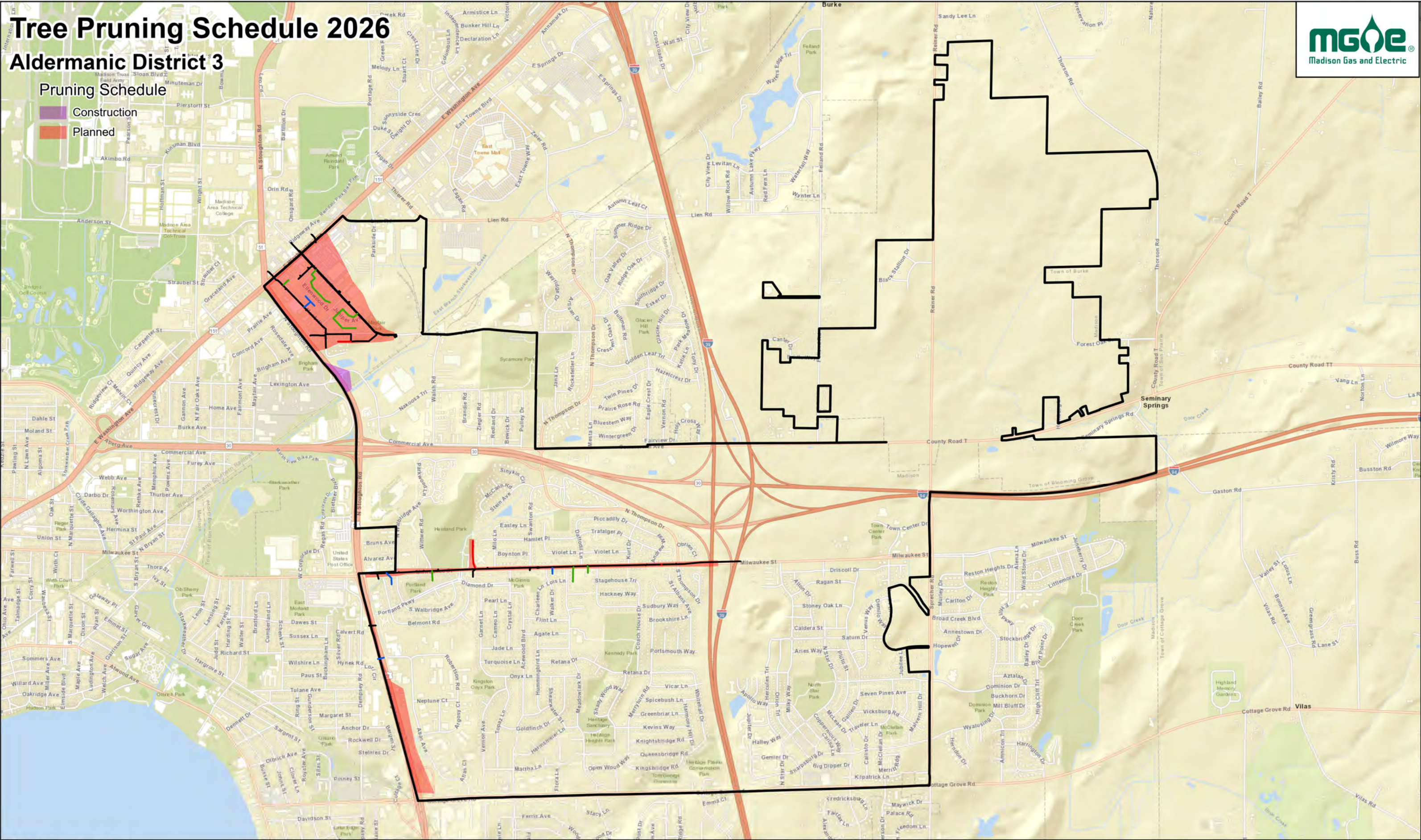
GIS Data / Mapping Disclaimer
Madison Gas and Electric Company ("MGE") is providing you access to its GIS mapping data ("Information"), in electronic format or print format, as a resource of general information for use "as-is." The Information provided is for reference purposes only and is and shall remain the property of MGE. This Information may not be copied, distributed, rented, or altered for subsequent use, in whole or in part, without the express written consent of MGE. The Information provided may contain inaccuracies or errors. Source data used for the Information may have been collected at different scales, times or definitions, resulting in inconsistencies among features represented together as part of this Information. MGE makes no representation regarding the accuracy, reliability, or completeness of the information. The use of this Information is at your own risk.
By accessing this Information, you agree and acknowledge that receipt of the Information in no way releases you from following required and standard protocols in the course of normal business including but not limited to calling and relying upon Digger's Hotline.
By using the Information you hereby release MGE, its officers, directors, employees and agents from any responsibility or liability associated with its use. In no event will MGE be liable for any damages whatsoever that may arise out of the use of the Information.
For questions, contact Steve Marymee (smarymee@mge.com) or Zach Lindfors (zlindefors@mge.com)

Tree Pruning Schedule 2026

Aldermanic District 3

Pruning Schedule

- Construction
- Planned



GIS Data / Mapping Disclaimer
Madison Gas and Electric Company ("MGE") is providing you access to its GIS mapping data ("Information"), in electronic format or print format, as a resource of general information for use "as-is." The Information provided is for reference purposes only and is and shall remain the property of MGE. This Information may not be copied, distributed, rented, or altered for subsequent use, in whole or in part, without the express written consent of MGE. The Information provided may contain inaccuracies or errors. Source data used for the Information may have been collected at different scales, times or definitions, resulting in inconsistencies among features represented together as part of this Information. MGE makes no representation regarding the accuracy, reliability, or completeness of the information. The use of this Information is at your own risk. By accessing this Information, you agree and acknowledge that receipt of the Information in no way releases you from following required and standard protocols in the course of normal business including but not limited to calling and relying upon Digger's Hotline. By using the Information you hereby release MGE, its officers, directors, employees and agents from any responsibility or liability associated with its use. In no event will MGE be liable for any damages whatsoever that may arise out of the use of the Information. For questions, contact Steve Marymee (smarymee@mge.com) or Zach Lindfors (zclindfors@mge.com)

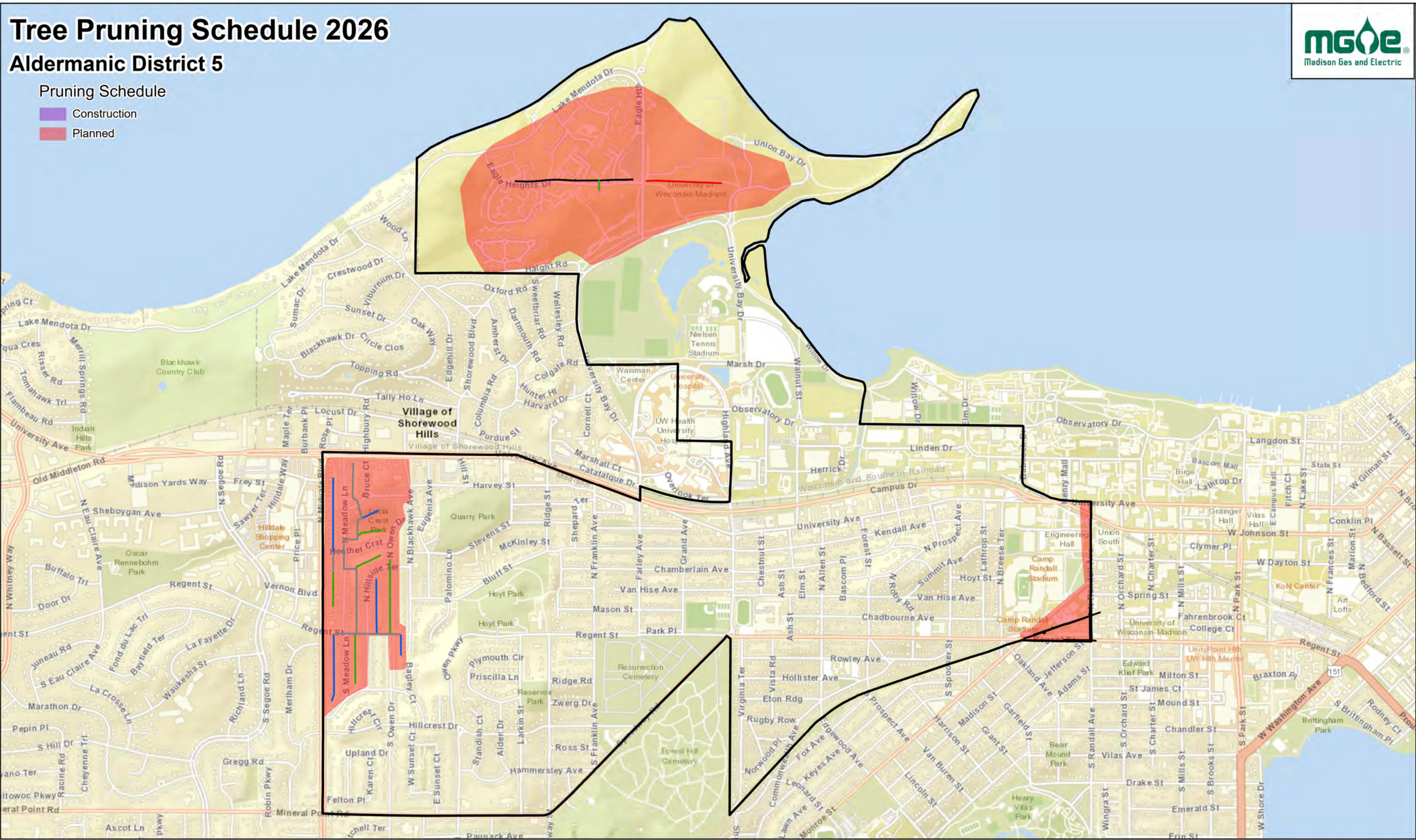
Tree Pruning Schedule 2026

Aldermanic District 5



Pruning Schedule

- Construction
- Planned



GIS Data / Mapping Disclaimer
Madison Gas and Electric Company ("MGE") is providing you access to its GIS mapping data ("Information"), in electronic format or print format, as a resource of general information for use "as-is." The Information provided is for reference purposes only and is and shall remain the property of MGE. This Information may not be copied, distributed, rented, or altered for subsequent use, in whole or in part, without the express written consent of MGE. The Information provided may contain inaccuracies or errors. Source data used for the Information may have been collected at different scales, times or definitions, resulting in inconsistencies among features represented together as part of this Information. MGE makes no representation regarding the accuracy, reliability, or completeness of the information. The use of this Information is at your own risk. By accessing this Information, you agree and acknowledge that receipt of the Information in no way releases you from following required and standard protocols in the course of normal business including but not limited to calling and relying upon Digger's Hotline. By using the Information you hereby release MGE, its officers, directors, employees and agents from any responsibility or liability associated with its use. In no event will MGE be liable for any damages whatsoever that may arise out of the use of the Information. For questions, contact Steve Marymee (smarymee@mge.com) or Zach Lindfors (zlindfors@mge.com)

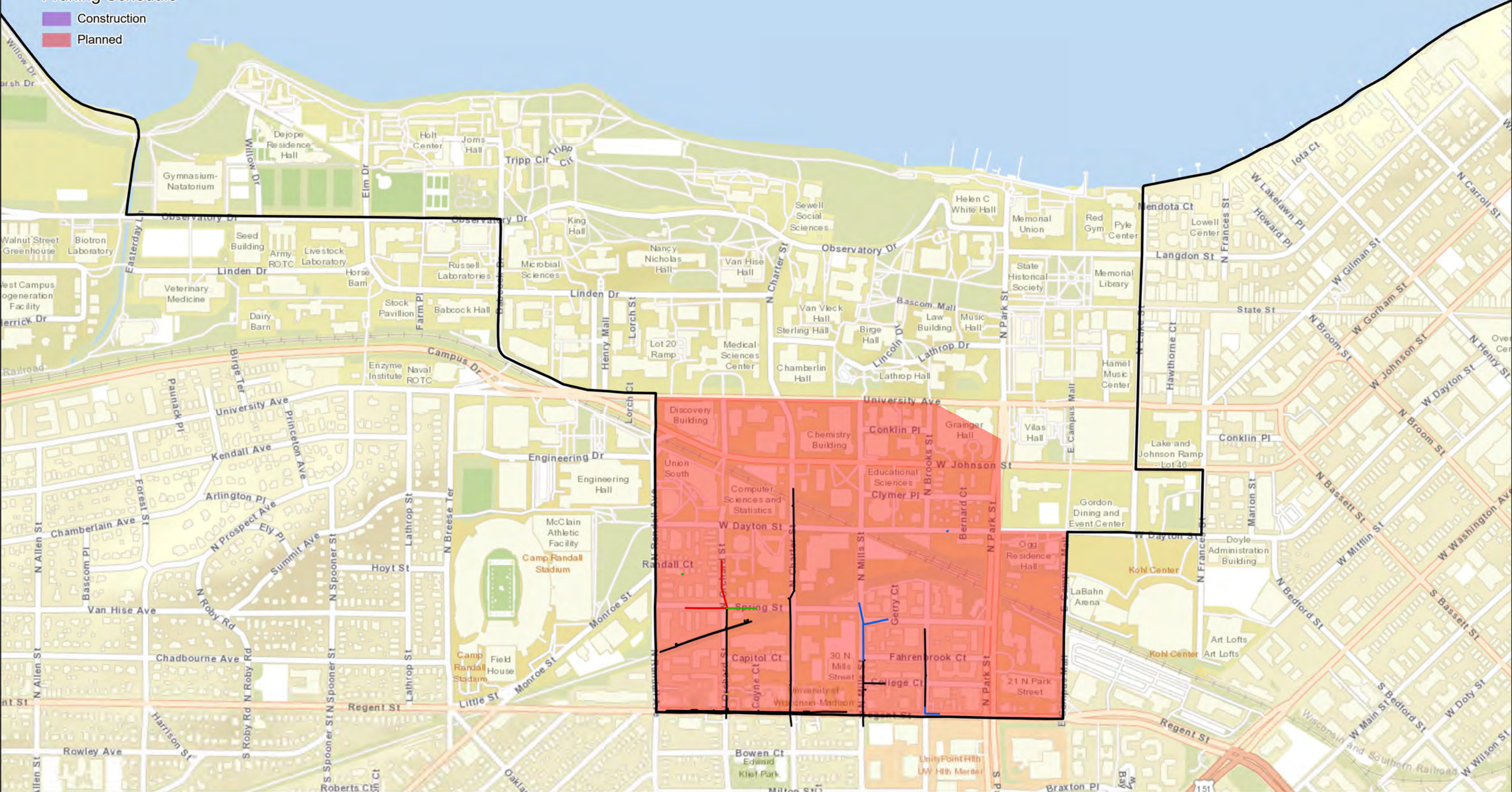
Tree Pruning Schedule 2026

Aldermanic District 8



Pruning Schedule

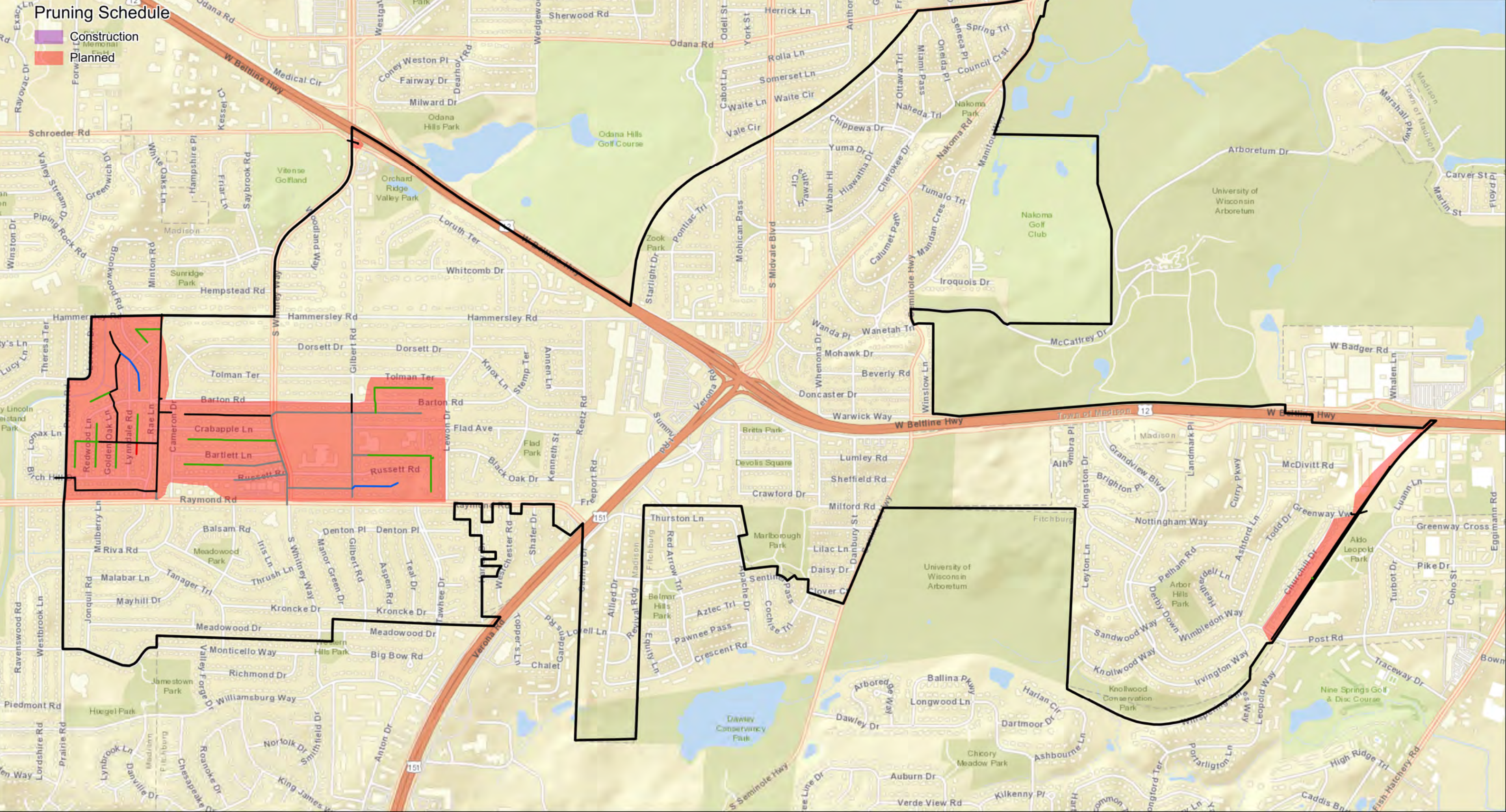
- Construction
- Planned



GIS Data / Mapping Disclaimer
Madison Gas and Electric Company ("MGE") is providing you access to its GIS mapping data ("Information"), in electronic format or print format, as a resource of general information for use "as-is." The Information provided is for reference purposes only and is and shall remain the property of MGE. This Information may not be copied, distributed, rented, or altered for subsequent use, in whole or in part, without the express written consent of MGE. The Information provided may contain inaccuracies or errors. Source data used for the Information may have been collected at different scales, times or definitions, resulting in inconsistencies among features represented together as part of this Information. MGE makes no representation regarding the accuracy, reliability, or completeness of the information. The use of this Information is at your own risk.
By accessing this Information, you agree and acknowledge that receipt of the Information in no way releases you from following required and standard protocols in the course of normal business including but not limited to calling and relying upon Digger's Hotline.
By using the Information you hereby release MGE, its officers, directors, employees and agents from any responsibility or liability associated with its use. In no event will MGE be liable for any damages whatsoever that may arise out of the use of the Information.
For questions, contact Steve Marymee (smarymee@mge.com) or Zach Lindfors (zclindfors@mge.com)

Tree Pruning Schedule 2026

Aldermanic District 10



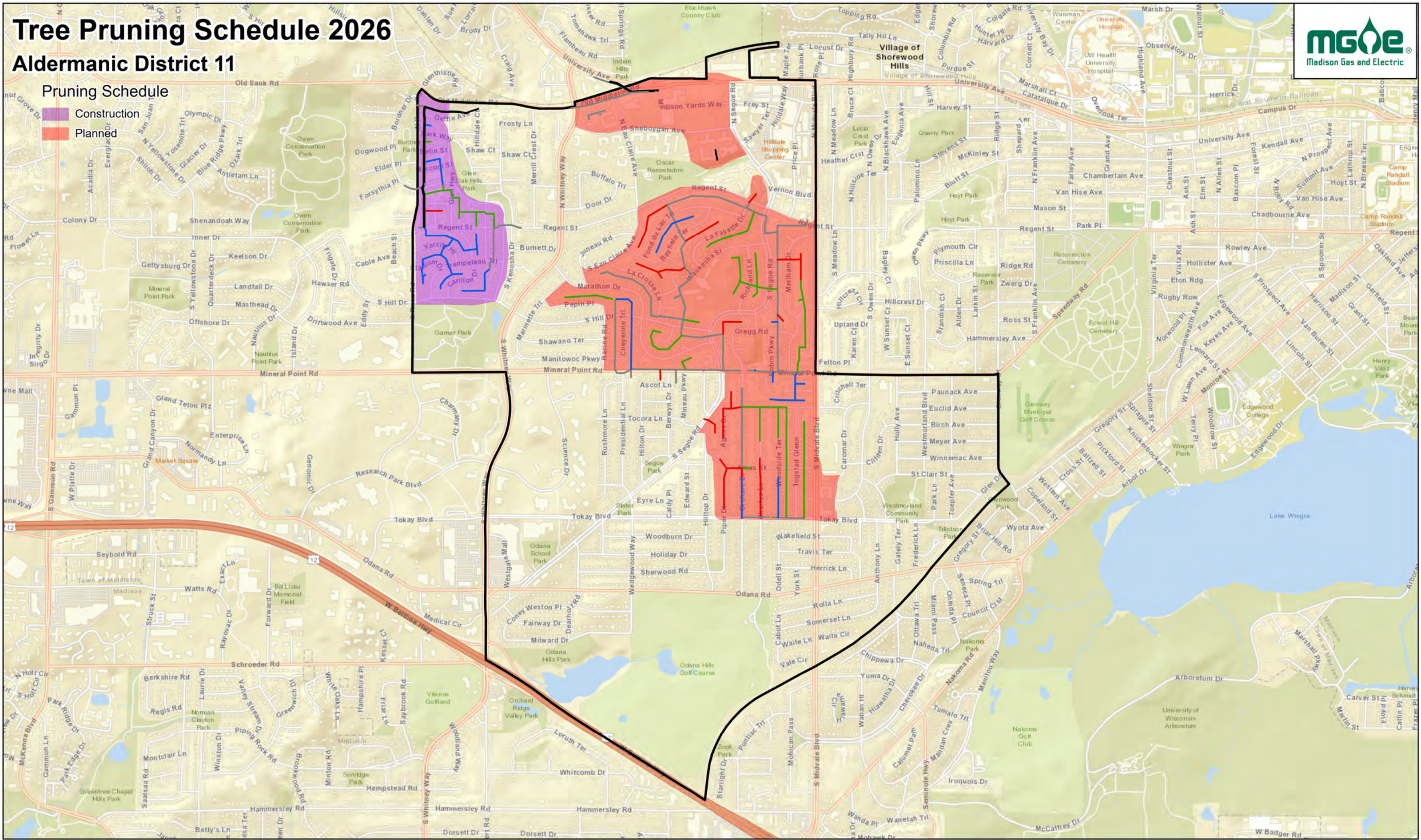
GIS Data / Mapping Disclaimer
Madison Gas and Electric Company ("MGE") is providing you access to its GIS mapping data ("Information"), in electronic format or print format, as a resource of general information for use "as-is." The Information provided is for reference purposes only and is and shall remain the property of MGE. This Information may not be copied, distributed, rented, or altered for subsequent use, in whole or in part, without the express written consent of MGE. The Information provided may contain inaccuracies or errors. Source data used for the Information may have been collected at different scales, times or definitions, resulting in inconsistencies among features represented together as part of this Information. MGE makes no representation regarding the accuracy, reliability, or completeness of the information. The use of this Information is at your own risk. By accessing this Information, you agree and acknowledge that receipt of the Information in no way releases you from following required and standard protocols in the course of normal business including but not limited to calling and relying upon Digger's Hotline. By using the Information you hereby release MGE, its officers, directors, employees and agents from any responsibility or liability associated with its use. In no event will MGE be liable for any damages whatsoever that may arise out of the use of the Information. For questions, contact Steve Marymee (smarymee@mge.com) or Zach Lindfors (zlindfors@mge.com)

Tree Pruning Schedule 2026

Aldermanic District 11

Pruning Schedule

- Construction
- Planned



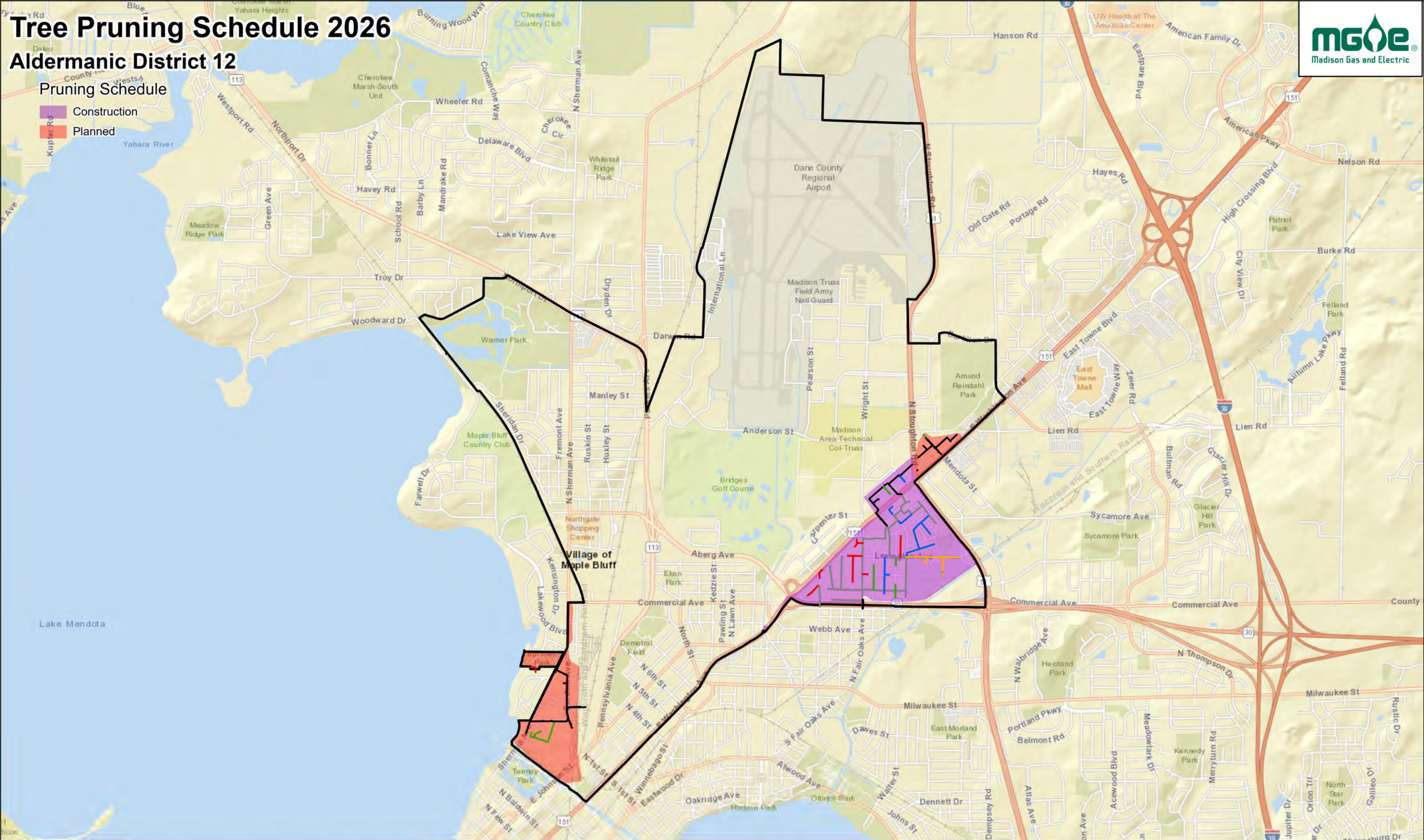
GIS Data / Mapping Disclaimer
Madison Gas and Electric Company ("MGE") is providing you access to its GIS mapping data ("Information"), in electronic format or print format, as a resource of general information for use "as-is." The Information provided is for reference purposes only and is and shall remain the property of MGE. This Information may not be copied, distributed, rented, or altered for subsequent use, in whole or in part, without the express written consent of MGE. The Information provided may contain inaccuracies or errors. Source data used for the Information may have been collected at different scales, times or definitions, resulting in inconsistencies among features represented together as part of this Information. MGE makes no representation regarding the accuracy, reliability, or completeness of the information. The use of this Information is at your own risk. By accessing this Information, you agree and acknowledge that receipt of the Information in no way releases you from following required and standard protocols in the course of normal business including but not limited to calling and relying upon Digger's Hotline. By using the Information you hereby release MGE, its officers, directors, employees and agents from any responsibility or liability associated with its use. In no event will MGE be liable for any damages whatsoever that may arise out of the use of the Information. For questions, contact Steve Marymee (smarymee@mge.com) or Zach Lindfors (zclindfors@mge.com)

Tree Pruning Schedule 2026

Aldermanic District 12

Pruning Schedule

- Construction
- Planned



GIS Data / Mapping Disclaimer
Madison Gas and Electric Company ("MGE") is providing you access to its GIS mapping data ("Information"), in electronic format or print format, as a resource of general information for use "as-is." The Information provided is for reference purposes only and is and shall remain the property of MGE. This Information may not be copied, distributed, rented, or altered for subsequent use, in whole or in part, without the express written consent of MGE. The Information provided may contain inaccuracies or errors. Source data used for the Information may have been collected at different scales, times or definitions, resulting in inconsistencies among features represented together as part of this Information. MGE makes no representation regarding the accuracy, reliability, or completeness of the information. The use of this Information is at your own risk.
By accessing this Information, you agree and acknowledge that receipt of the Information in no way releases you from following required and standard protocols in the course of normal business including but not limited to calling and relying upon Digger's Hotline.
By using the Information you hereby release MGE, its officers, directors, employees and agents from any responsibility or liability associated with its use. In no event will MGE be liable for any damages whatsoever that may arise out of the use of the Information.
For questions, contact Steve Marymee (smarymee@mge.com) or Zach Lindfors (zclindfors@mge.com)

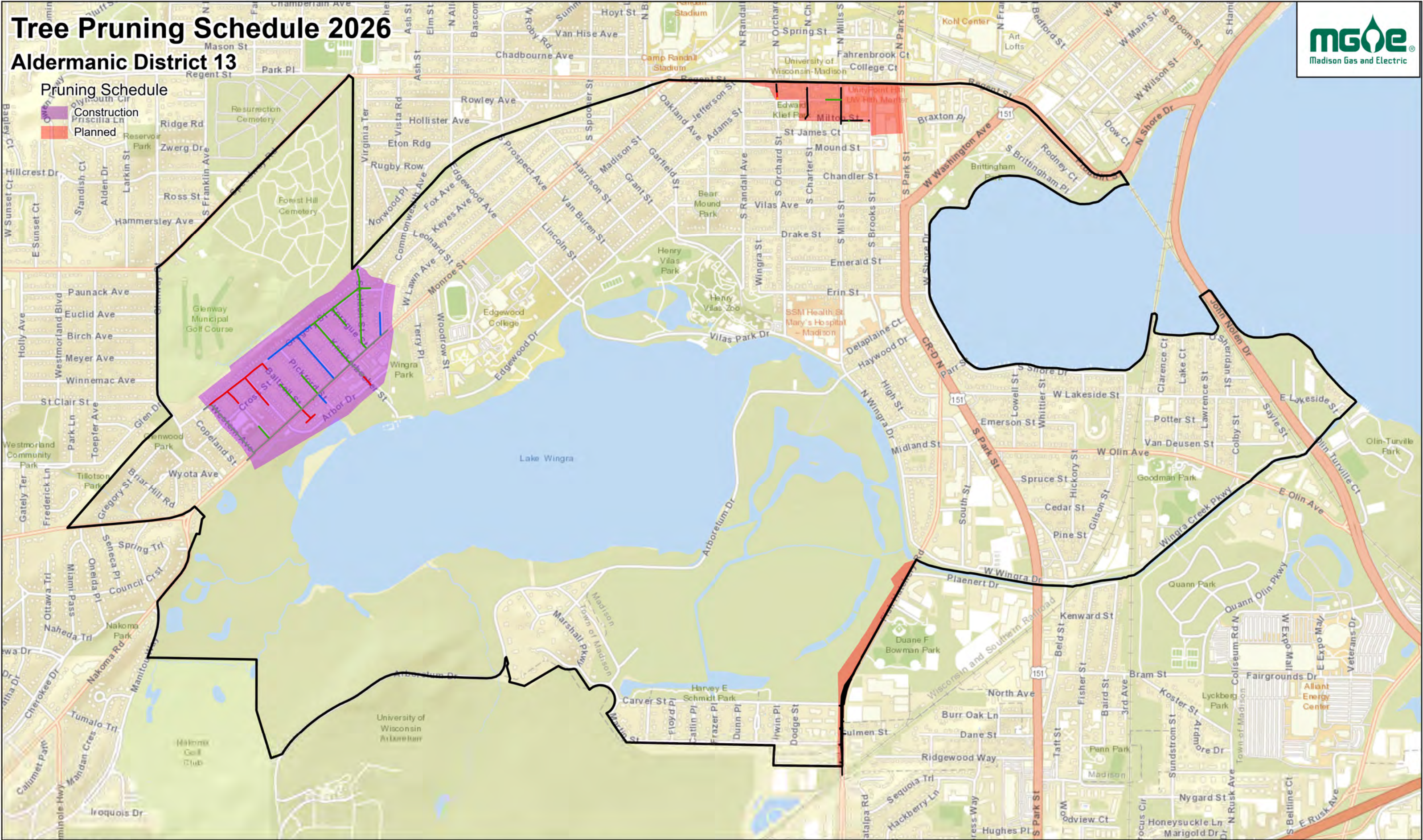
Tree Pruning Schedule 2026

Aldermanic District 13



Pruning Schedule

- Construction
- Planned



GIS Data / Mapping Disclaimer
Madison Gas and Electric Company ("MGE") is providing you access to its GIS mapping data ("Information"), in electronic format or print format, as a resource of general information for use "as-is." The Information provided is for reference purposes only and is and shall remain the property of MGE. This Information may not be copied, distributed, rented, or altered for subsequent use, in whole or in part, without the express written consent of MGE. The Information provided may contain inaccuracies or errors. Source data used for the Information may have been collected at different scales, times or definitions, resulting in inconsistencies among features represented together as part of this Information. MGE makes no representation regarding the accuracy, reliability, or completeness of the information. The use of this Information is at your own risk.
By accessing this Information, you agree and acknowledge that receipt of the Information in no way releases you from following required and standard protocols in the course of normal business including but not limited to calling and relying upon Digger's Hotline.
By using the Information you hereby release MGE, its officers, directors, employees and agents from any responsibility or liability associated with its use. In no event will MGE be liable for any damages whatsoever that may arise out of the use of the Information.
For questions, contact Steve Marymee (smarymee@mge.com) or Zach Lindfors (zlindfors@mge.com)

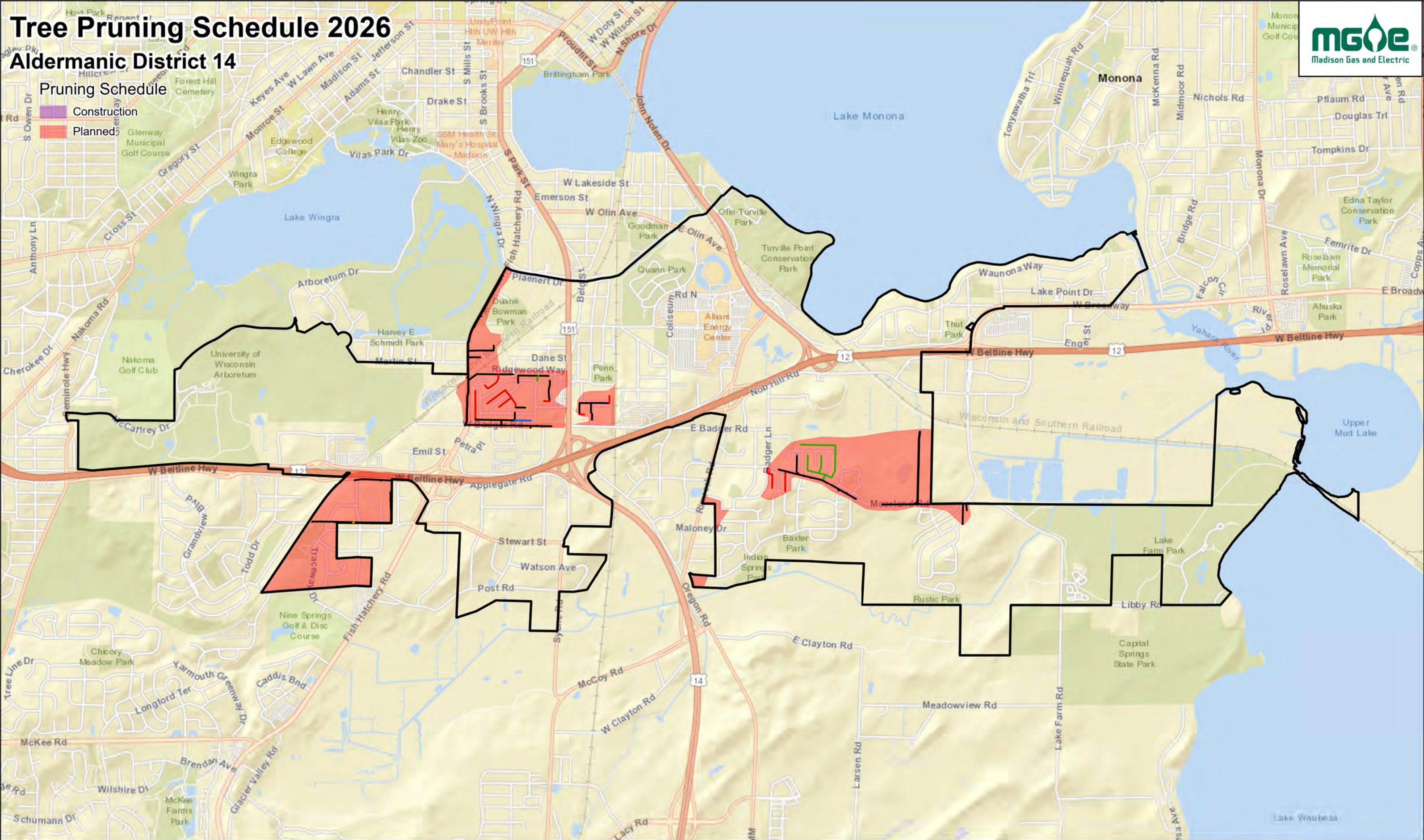
Tree Pruning Schedule 2026

Aldermanic District 14



Pruning Schedule

- Construction
- Planned



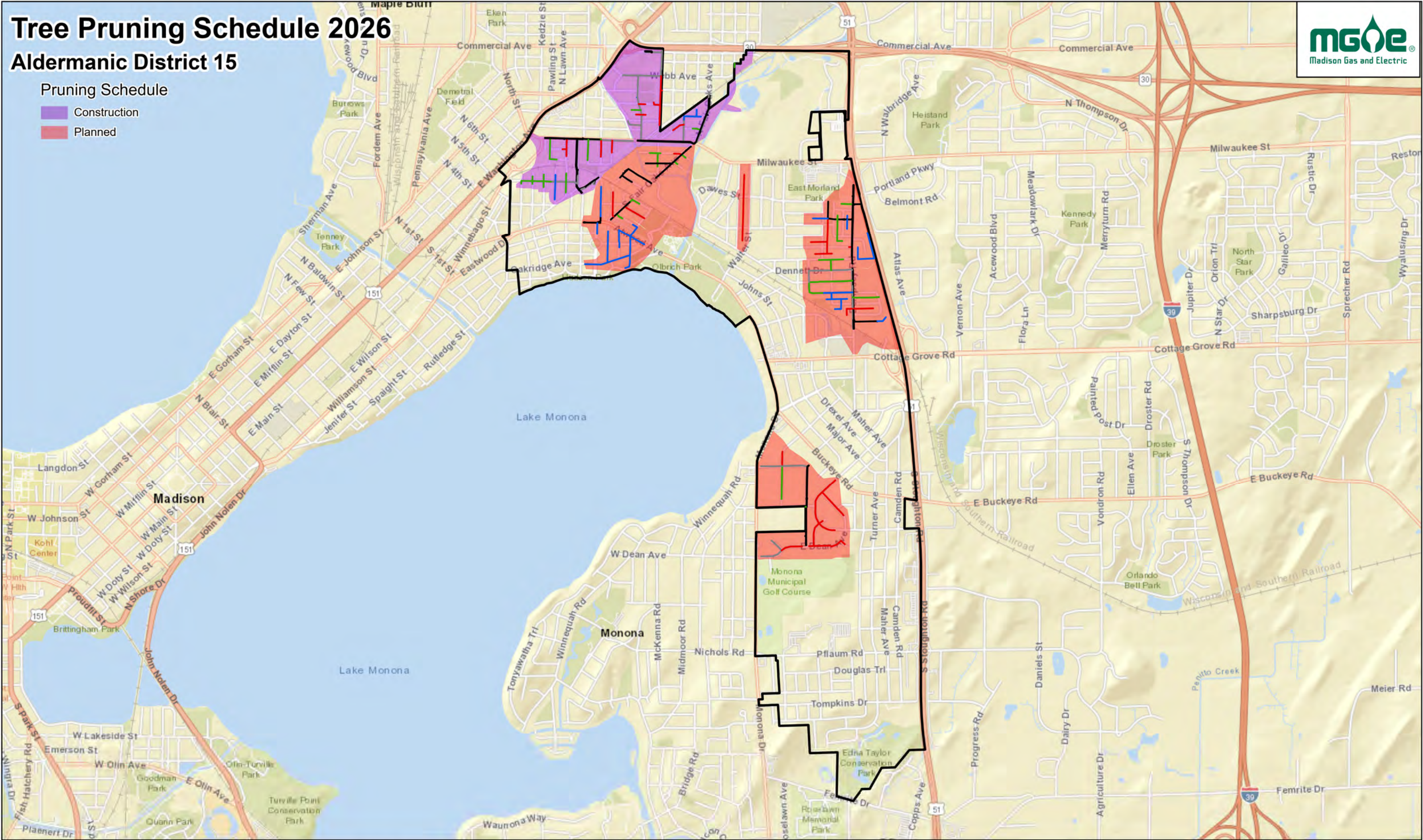
GIS Data / Mapping Disclaimer
Madison Gas and Electric Company ("MGE") is providing you access to its GIS mapping data ("Information"), in electronic format or print format, as a resource of general information for use "as-is." The Information provided is for reference purposes only and is and shall remain the property of MGE. This Information may not be copied, distributed, rented, or altered for subsequent use, in whole or in part, without the express written consent of MGE. The Information provided may contain inaccuracies or errors. Source data used for the Information may have been collected at different scales, times or definitions, resulting in inconsistencies among features represented together as part of this Information. MGE makes no representation regarding the accuracy, reliability, or completeness of the information. The use of this Information is at your own risk.
By accessing this Information, you agree and acknowledge that receipt of the Information in no way releases you from following required and standard protocols in the course of normal business including but not limited to calling and relying upon Digger's Hotline.
By using the Information you hereby release MGE, its officers, directors, employees and agents from any responsibility or liability associated with its use. In no event will MGE be liable for any damages whatsoever that may arise out of the use of the Information.
For questions, contact Steve Marymee (smarymee@mge.com) or Zach Lindfors (zllindfors@mge.com)

Tree Pruning Schedule 2026

Aldermanic District 15

Pruning Schedule

- Construction
- Planned



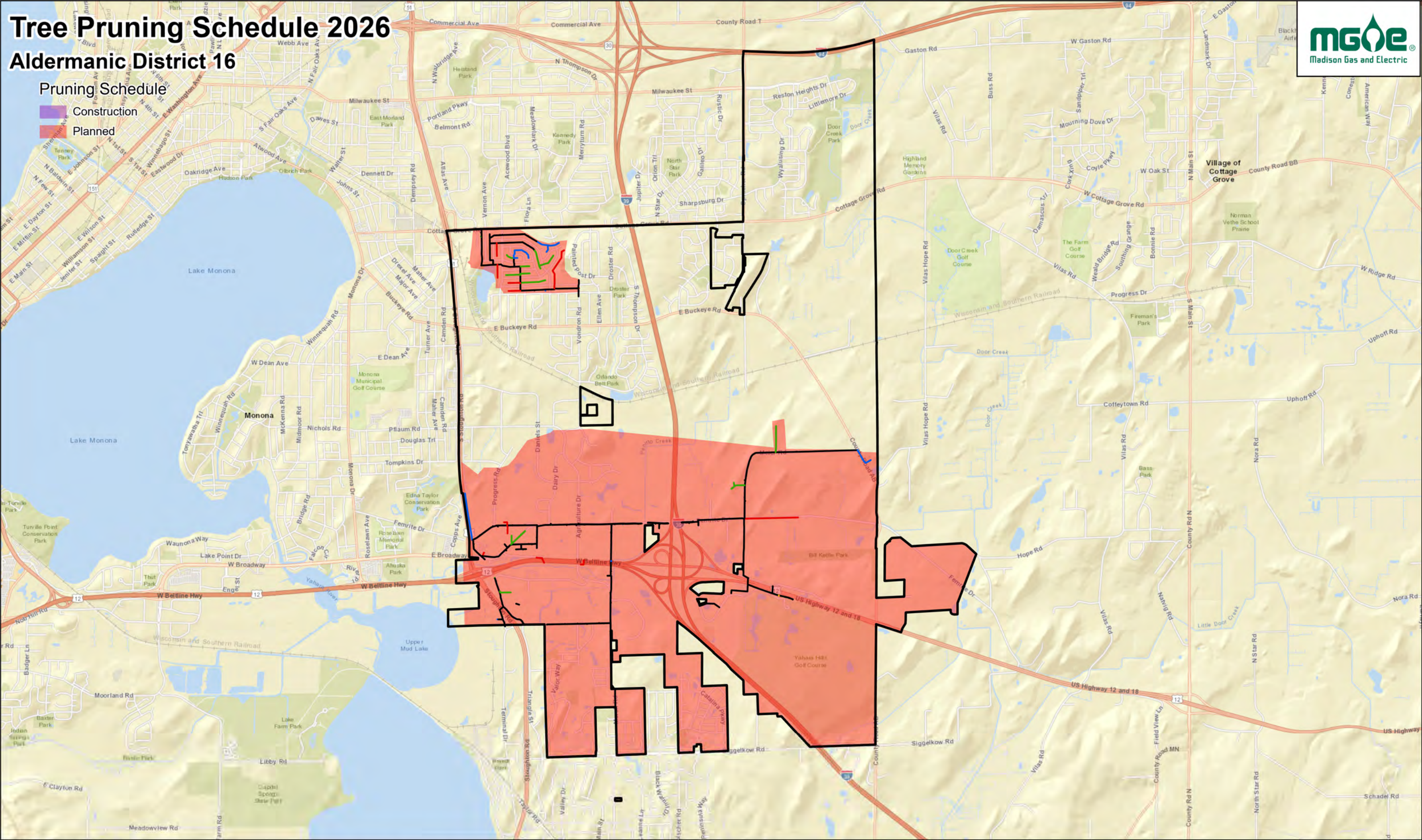
GIS Data / Mapping Disclaimer
Madison Gas and Electric Company ("MGE") is providing you access to its GIS mapping data ("Information"), in electronic format or print format, as a resource of general information for use "as-is." The Information provided is for reference purposes only and is and shall remain the property of MGE. This Information may not be copied, distributed, rented, or altered for subsequent use, in whole or in part, without the express written consent of MGE. The Information provided may contain inaccuracies or errors. Source data used for the Information may have been collected at different scales, times or definitions, resulting in inconsistencies among features represented together as part of this Information. MGE makes no representation regarding the accuracy, reliability, or completeness of the information. The use of this Information is at your own risk.
By accessing this Information, you agree and acknowledge that receipt of the Information in no way releases you from following required and standard protocols in the course of normal business including but not limited to calling and relying upon Digger's Hotline.
By using the Information you hereby release MGE, its officers, directors, employees and agents from any responsibility or liability associated with its use. In no event will MGE be liable for any damages whatsoever that may arise out of the use of the Information.
For questions, contact Steve Marymee (smarymee@mge.com) or Zach Lindfors (zlindfors@mge.com)

Tree Pruning Schedule 2026

Aldermanic District 16

Pruning Schedule

- Construction
- Planned



GIS Data / Mapping Disclaimer
Madison Gas and Electric Company ("MGE") is providing you access to its GIS mapping data ("Information"), in electronic format or print format, as a resource of general information for use "as-is." The Information provided is for reference purposes only and is and shall remain the property of MGE. This Information may not be copied, distributed, rented, or altered for subsequent use, in whole or in part, without the express written consent of MGE. The Information provided may contain inaccuracies or errors. Source data used for the Information may have been collected at different scales, times or definitions, resulting in inconsistencies among features represented together as part of this Information. MGE makes no representation regarding the accuracy, reliability, or completeness of the information. The use of this Information is at your own risk. By accessing this Information, you agree and acknowledge that receipt of the Information in no way releases you from following required and standard protocols in the course of normal business including but not limited to calling and relying upon Digger's Hotline. By using the Information you hereby release MGE, its officers, directors, employees and agents from any responsibility or liability associated with its use. In no event will MGE be liable for any damages whatsoever that may arise out of the use of the Information. For questions, contact Steve Marymee (smarymee@mge.com) or Zach Lindfors (zlindfors@mge.com)

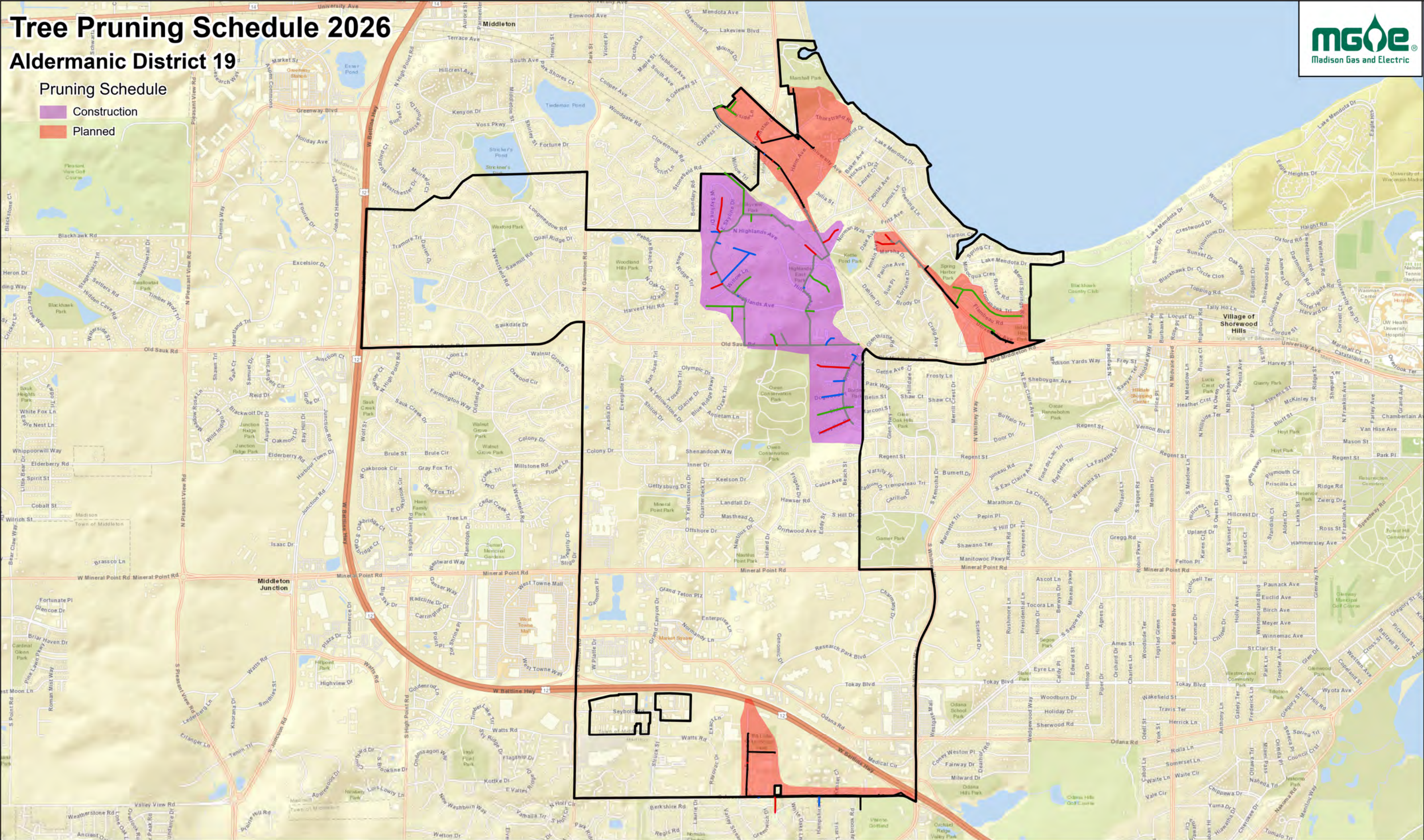
Tree Pruning Schedule 2026

Aldermanic District 19



Pruning Schedule

- Construction
- Planned



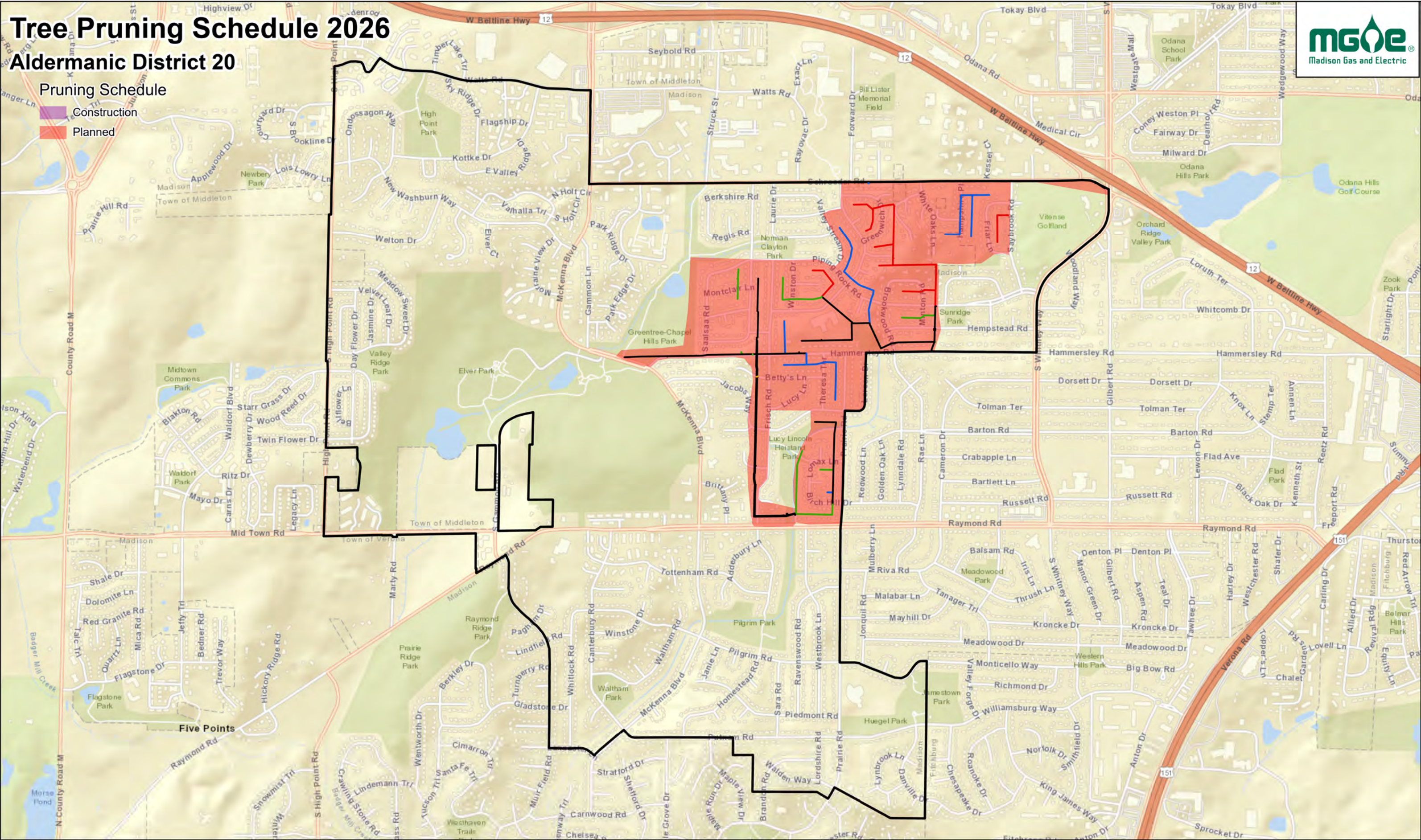
GIS Data / Mapping Disclaimer
Madison Gas and Electric Company ("MGE") is providing you access to its GIS mapping data ("Information"), in electronic format or print format, as a resource of general information for use "as-is." The Information provided is for reference purposes only and is and shall remain the property of MGE. This Information may not be copied, distributed, rented, or altered for subsequent use, in whole or in part, without the express written consent of MGE. The Information provided may contain inaccuracies or errors. Source data used for the Information may have been collected at different scales, times or definitions, resulting in inconsistencies among features represented together as part of this Information. MGE makes no representation regarding the accuracy, reliability, or completeness of the information. The use of this Information is at your own risk. By accessing this Information, you agree and acknowledge that receipt of the Information in no way releases you from following required and standard protocols in the course of normal business including but not limited to calling and relying upon Digger's Hotline. By using the Information you hereby release MGE, its officers, directors, employees and agents from any responsibility or liability associated with its use. In no event will MGE be liable for any damages whatsoever that may arise out of the use of the Information. For questions, contact Steve Marymee (smarymee@mge.com) or Zach Lindfors (zlindfors@mge.com)

Tree Pruning Schedule 2026

Aldermanic District 20

Pruning Schedule

- Construction
- Planned



GIS Data / Mapping Disclaimer
Madison Gas and Electric Company ("MGE") is providing you access to its GIS mapping data ("Information"), in electronic format or print format, as a resource of general information for use "as-is." The Information provided is for reference purposes only and is and shall remain the property of MGE. This Information may not be copied, distributed, rented, or altered for subsequent use, in whole or in part, without the express written consent of MGE. The Information provided may contain inaccuracies or errors. Source data used for the Information may have been collected at different scales, times or definitions, resulting in inconsistencies among features represented together as part of this Information. MGE makes no representation regarding the accuracy, reliability, or completeness of the information. The use of this Information is at your own risk. By accessing this Information, you agree and acknowledge that receipt of the Information in no way releases you from following required and standard protocols in the course of normal business including but not limited to calling and relying upon Digger's Hotline. By using the Information you hereby release MGE, its officers, directors, employees and agents from any responsibility or liability associated with its use. In no event will MGE be liable for any damages whatsoever that may arise out of the use of the Information. For questions, contact Steve Marymee (smarymee@mge.com) or Zach Lindfors (zlindfors@mge.com)

Notice of Application for City of Madison Tree Pruning Permit

To prune City of Madison-owned trees within the public right-of-way of any street, alley, highway or greenway Madison Gas and Electric (MGE) is required to apply for a permit; MGE Forestry works with the City Forester and the City of Madison Streets and Urban Forestry Division on a yearly plan to prevent over-pruning of City-owned trees. MGE's 2026 plan for pruning trees on the public rights-of-ways will be considered by the Board of Public Works on Wednesday, January 28th, 2026, at 4:30 P.M., via virtual meeting.

If you wish to speak at the virtual meeting, you must register. You can register at www.cityofmadison.com/city-hall/committees/meeting-schedule. Registration will open when the meeting is published on the calendar, typically around noon on the Friday preceding the meeting, in this instance Friday, January 23rd, 2026. Interested participants can search for the date, click on the Board of Public Works meeting, then click "Register for Public Comment."

If you require an interpreter, materials in alternate formats, or other accommodations to access this public hearing, please contact City of Madison Engineering Department at (608) 266-4751 or email us at boardofpublicworks@cityofmadison.com. Please make contact at least 72 hours prior to the date of this public hearing so that we can make proper accommodations.

Your safety and our electric system reliability are both important to us. Line clearance pruning is done to minimize tree-related storm damage and tree-caused electric system outages and conflicts. As a National Arbor Day "Tree Line USA Utility," we are concerned about the health and appearance of trees in your neighborhood. Our contract crews prune according to industry Best Management Practices as outlined by the International Society of Arboriculture. The crews also undergo yearly work- and safety-related training.

If your trees require pruning, you will receive further notification before line clearance work begins.



Madison Gas and Electric Company

P.O. Box 1231

Madison, Wisconsin 53701-1231

Prsrt First Class
US Postage
PAID
Permit# 48
Royal Oak, MI

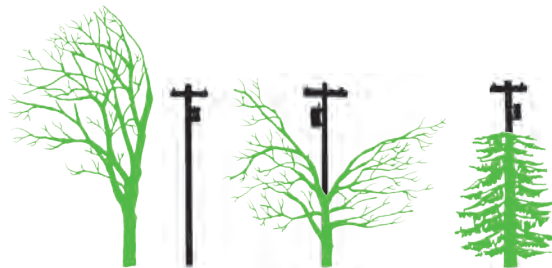
Tree pruning in your neighborhood

Madison Gas and Electric (MGE) will be performing line clearance tree pruning in your neighborhood in the next few months. This postcard is the first of a two-part notification process before we begin our pruning work. Along with this postcard, you can expect to see an MGE Consulting Utility Arborist (CUA) in your neighborhood soon.

Our International Society of Arboriculture-certified CUAs will conduct a full inspection and assessment of all MGE's overhead electric facilities for vegetation conflicts in your neighborhood. You will be notified about any proposed pruning on your property prior to the work starting. MGE's goal is to prune for five years of clearance and remove tall-growing species under our primary wires.

As a recognized Tree Line USA utility for more than 20 years, MGE trains our tree service contractors to follow industry-accepted best management practices and internationally accepted tree-pruning methods. MGE's line clearance pruning is necessary for your safety, to help prevent storm damage, and to minimize electrical outages related to tree/wire conflicts. We thank you for your cooperation in our efforts.

If you have questions or special circumstances we should be aware of, such as a dog in the yard, a locked gate, or a tree you would like removed, please call MGE's Forestry Line at 608-252-7186 or 1-800-245-1125.



The amount of pruning is based on the type of tree and how close the tree is to the wires. These are examples of pruning according to international pruning standards.





Madison Gas and Electric Company

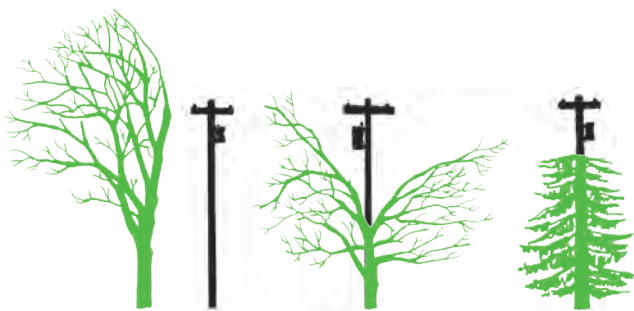
P.O. Box 1231

Madison, Wisconsin 53701-1231

PRESORTED
FIRST CLASS

Tree pruning

The amount of pruning is based on the type of tree and how close the tree is to the wires. These are examples of pruning according to international pruning standards.



Planting near power lines?

Use our online selection guide to pick the best tree or shrub for your yard. Visit mge.com/trees. We also have a printed guide called *Power Planting*. Just call 252-7222 to get a copy, or download it at mge.com/brochures.

Small trees

(less than 25 feet tall)

Flowering Crabapple,
Hawthorne, Lilac,
Shrubs

Medium trees

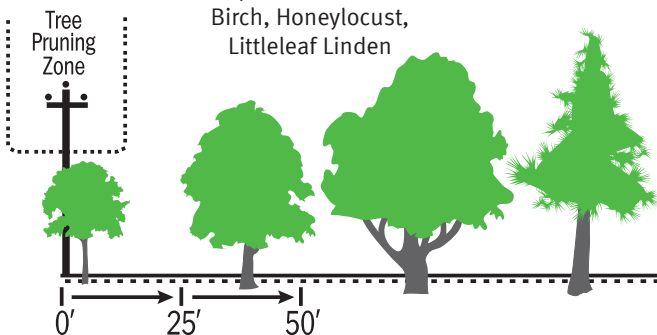
(up to 40 feet tall)

Birch, Honeylocust,
Littleleaf Linden

Tall trees

(more than 40 feet tall)

Ash, Maple, Oak





Madison Gas and Electric (MGE) will be pruning trees in your neighborhood. We prune trees near power lines for your safety, to prevent storm damage and to minimize electrical outages.

As a recognized Tree Line USA utility, MGE trains our tree service contractors to prune trees according to international pruning standards. They will prune to attain approximately four years of safe clearance.

You will be notified with more specific information prior to our crew starting work on your property. If a tree needs extensive pruning, you may talk to our crew about other options such as removing the tree.

If you have any questions or special circumstances we should be aware of, such as a dog in the yard or a tree you would like removed, please contact MGE's Forestry Line at 252-7186 or 1-800-245-1125.



Map Number



TREE PRUNING NOTIFICATION

MGE will have a professional pruning contractor trim or remove trees on your property. There is no charge for this work. Please review this notification, sign it and leave it on your door knob. **We will pick it up on:** _____

Print Name

Best time to call

Phone Number

Home Address

Location of Work

Work to be Done	Qty.	Species
Side Trims		
Top Trims		
V-Trims		
Removals		

Brush to be:

☐ Left

☐ Chipped and Blown

☐ Chipped and Removed

☐ Stacked and Slashed

Herbicide treatment of stumps

☐ Yes

☐ No

We may need to drive equipment on driveway and/or yard when conditions allow.

☐ Yes

☐ No

Logs or larger pieces of wood 6" in diameter or greater will be cut into lengths approximately 18" to 2 feet and left for your use. If you have any questions, please call.

Forestry

Representative _____ Phone _____

I certify that I am the property owner. I understand there will be no charge for this work and that the work will be performed at a later date.

Signature _____

Phone _____

If you do not have the authority to approve this notification or do not wish to, please indicate on reverse side of this card. You may also include any instructions or remarks on the back as well. **Thank you!**

Remarks

MGE is committed to providing safe and reliable energy to our customers. Inadequate line clearance can create safety hazards and cause service interruptions to you, your neighbors, and your community. As a recognized Tree Line USA utility, MGE thoroughly trains our tree service contractors to trim trees following international pruning standards. They will prune to attain approximately four years safe clearance.

We enlist the tree trimming services of corporations which are active members of The International Society of Arboriculture, The Wisconsin Arborist Association, and The National Arbor Day Foundation.

Thank you for your cooperation in our line clearance efforts.





Map Number

LINE CLEARANCE WORK NOTICE

Madison Gas and Electric Company (MGE) contracts with a professional line-clearing contractor to perform necessary tree pruning and/or sapling removal. There is no charge to you to perform this work. Crews will prune for approximately five years' growth. All brush will be chipped and removed. Learn more about MGE's tree-pruning process by visiting mge.com/pruning.

Work Location

Back Yard☐Front Yard☐Side Yard☐

Wire Type

Pole to Pole☐Pole to House☐

Work to be Done

Pruning

Qty.	Species	Notes

Sapling Removal

Y/N	Description

Work Access

We may need to drive equipment onto your property.
This will only be done if site conditions allow.

Site	Y/N	Notes
Yard		
Driveway		

5.5" x 11"

Please call the forestry representative if herbicide use is desired or you require further notification before the work is performed.

Forestry
Representative _____Date _____
Phone _____

5.5" x 11"

MGE is committed to providing safe and reliable energy to our customers. Inadequate line clearance can create safety hazards and cause service interruptions to you, your neighbors and your community. As a recognized Tree Line USA utility, MGE thoroughly trains our tree service contractors to prune trees following international pruning standards. Our contractors are active members of the International Society of Arboriculture, the Wisconsin Arborist Association and the National Arbor Day Foundation. We admire beautiful trees and will make every effort to be fair with both you as our customer and the tree.





Madison Gas and Electric Company

P.O. Box 1231

Madison, WI 53701-1231

608-252-7000

your community energy company

January 13, 2026

Sent Via Email

lbrown@cityofmadison.com

Mr. Ian Brown
City of Madison Urban Forestry
Madison Streets Division
1402 Wingra Creek Parkway
Madison WI 53715

Subject: Tree Pruning Notice

Dear Mr. Brown:

This letter is to confirm that on Wednesday, December 31, 2025, Madison Gas and Electric Company delivered to the U.S. Post Office the following mailer:

- Tree Pruning Notice Postcard Mailer - City of Madison - 2026

If you have any further questions, please email me at mark.rappe@mge.com.

Sincerely,

A handwritten signature in dark ink, appearing to read "Mark Rappe", is written over a light blue horizontal line.

Mark Rappe
Lead Customer Systems Analyst

art

cc: Kate Kendziora, MGE