

---

# MIDDLETON - CROSS PLAINS AREA SCHOOL DISTRICT - POPE FARM ELEMENTARY SCHOOL

MADISON, WI



eppstein uhen : architects

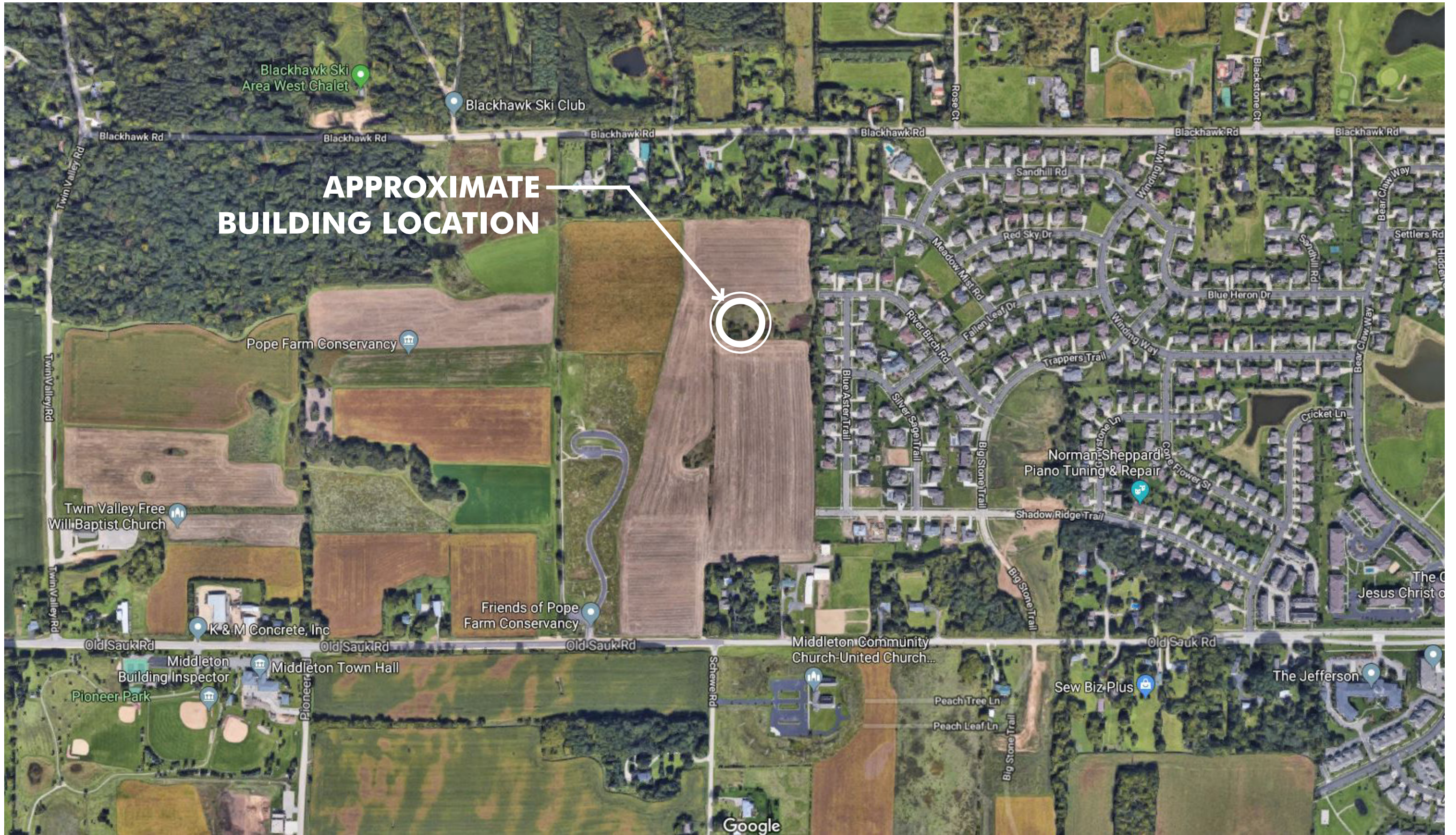
---

## CUP SUBMITTAL

JANUARY 9, 2019

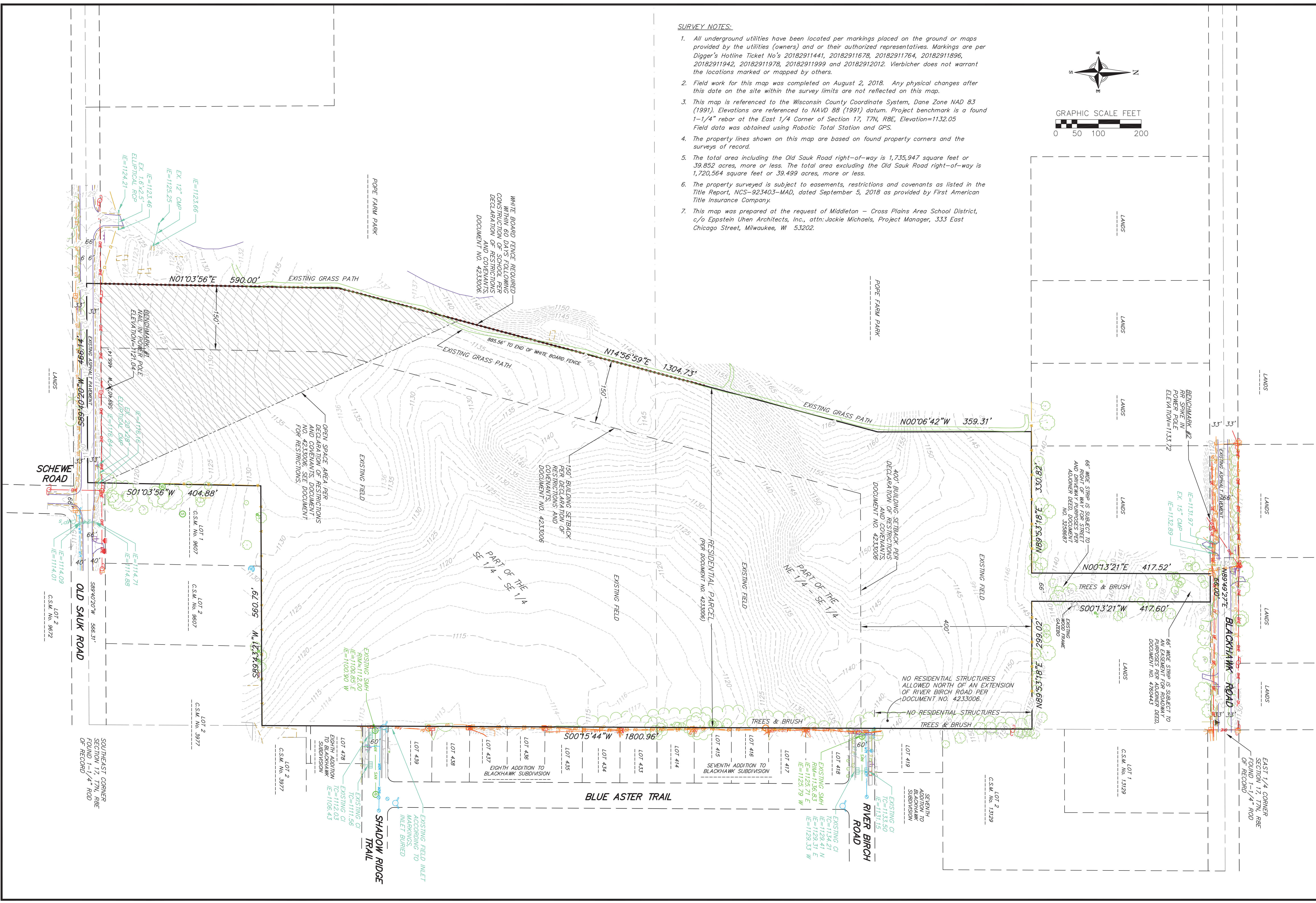
PROJECT NUMBER: 316517-01





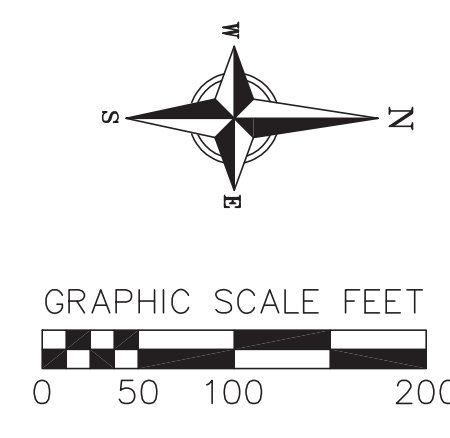
**APPROXIMATE  
BUILDING LOCATION**

LOCATOR MAP



**SURVEY NOTES:**

- All underground utilities have been located per markings placed on the ground or maps provided by the utilities (owners) and or their authorized representatives. Markings are per Digger's Hotline Ticket No's 20182911441, 20182911678, 20182911764, 20182911896, 20182911942, 20182911978, 20182911999 and 20182912012. Vierbicher does not warrant the locations marked or mapped by others.
- Field work for this map was completed on August 2, 2018. Any physical changes after this date on the site within the survey limits are not reflected on this map.
- This map is referenced to the Wisconsin County Coordinate System, Dane Zone NAD 83 (1991). Elevations are referenced to NAVD 88 (1991) datum. Project benchmark is a found 1-1/4" rebar at the East 1/4 Corner of Section 17, T7N, R8E, Elevation=1132.05. Field data was obtained using Robotic Total Station and GPS.
- The property lines shown on this map are based on found property corners and the surveys of record.
- The total area including the Old Sauk Road right-of-way is 1,735,947 square feet or 39.852 acres, more or less. The total area excluding the Old Sauk Road right-of-way is 1,720,564 square feet or 39.499 acres, more or less.
- The property surveyed is subject to easements, restrictions and covenants as listed in the Title Report, NCS-923403-MAD, dated September 5, 2018 as provided by First American Title Insurance Company.
- This map was prepared at the request of Middleton - Cross Plains Area School District, c/o Eppstein Uhen Architects, Inc., attn:Jackie Michaels, Project Manager, 333 East Chicago Street, Milwaukee, WI 53202.



**Existing Conditions**  
Middleton-Cross Plains Elementary School  
City of Madison  
Dane County, Wisconsin

REVISIONS	NO.	DATE	REMARKS

SCALE	AS SHOWN
DATE	1/9/19
DRAFTER	BBAR/JGOL
CHECKED	MSCH/TSCH
PROJECT NO.	180222
<b>C</b>	<b>2</b>



SOUTHEAST AERIAL

3D VIEWS OF PROPOSED DESIGN



MAIN ENTRY

3D VIEWS OF PROPOSED DESIGN



WEST ENTRY

3D VIEWS OF PROPOSED DESIGN



NORTHWEST AERIAL

3D VIEWS OF PROPOSED DESIGN





eppstein uhen : architects

milwaukee 333 East Chicago Street  
Milwaukee, Wisconsin 53202  
414.271.5350

madison 309 West Johnson Street, Suite 202  
Madison, Wisconsin 53703  
608.442.5350

des moines 699 Walnut Street, Suite 400  
Des Moines, Iowa 50309  
515.274.5840

denver 1899 Wynkoop Street, Suite 300  
Denver, Colorado 80202  
303.555.4500

CONSULTANTS



engineers | consultants | commissioning  
901 Whalen Road, Suite A | Verona, WI 53593  
P: 608.846.9556 | j@mepprojects.com

PROJECT INFORMATION

MIDDLETON -  
CROSS PLAINS  
ELEMENTARY  
SCHOOL

MADISON, WI

ISSUANCE AND REVISIONS

DATE	DESCRIPTION

KEY PLAN

SHEET INFORMATION

**PROGRESS DOCUMENTS  
NOT FOR CONSTRUCTION**

These documents reflect progress and intent and may be subject to change, including additional detail. These are not final construction documents and shall not be used for final bidding or construction-related purposes.

PROJECT MANAGER JKH

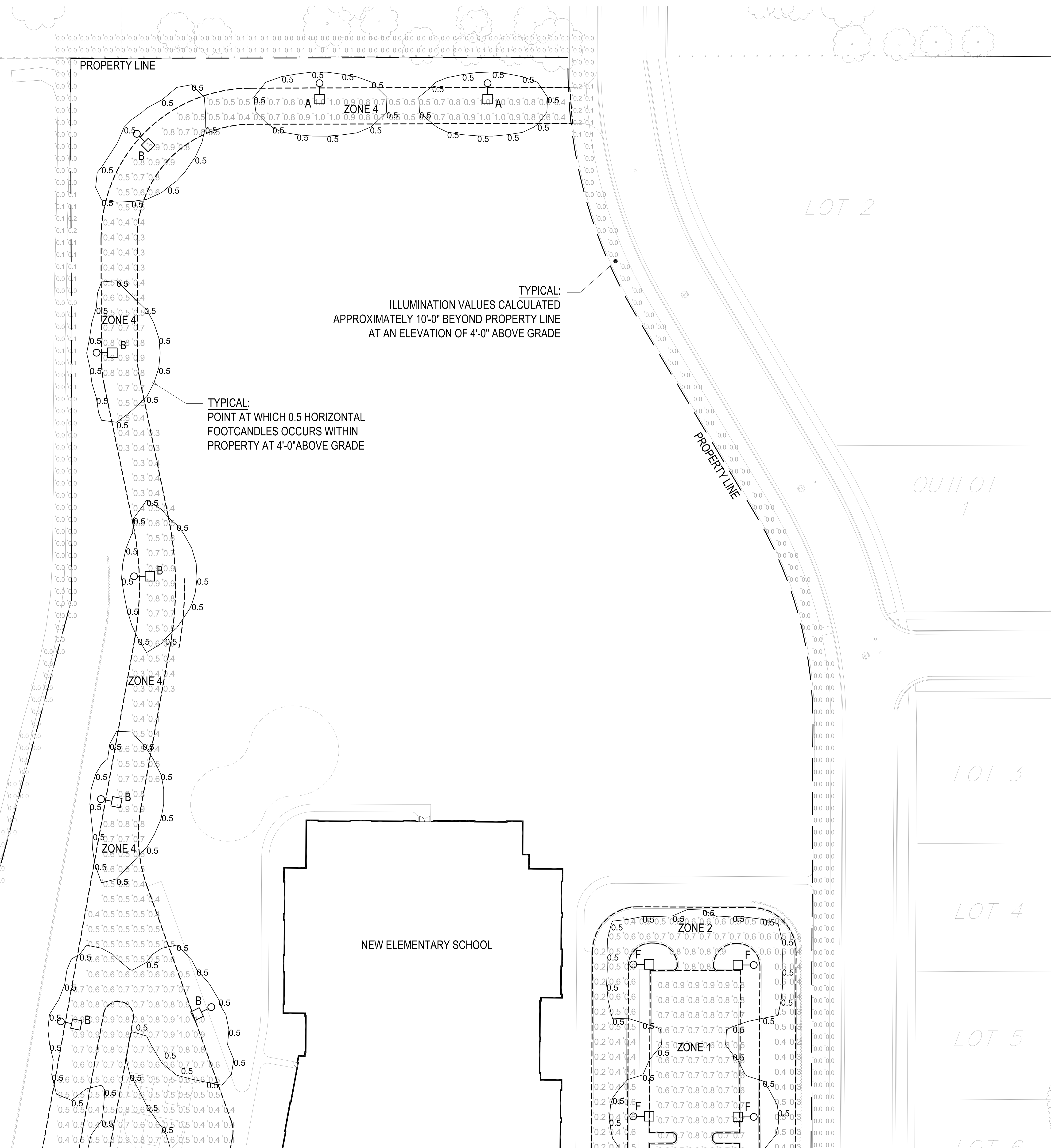
PROJECT NUMBER E08.18.02

SITE PHOTOMETRICS  
PLAN - NORTH

E002

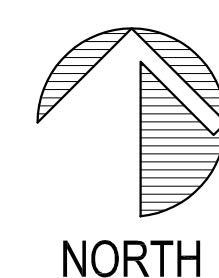
© Eppstein Uhen Architects, Inc.

STATISTICS					
ZONE	DESCRIPTION	AVERAGE	MAXIMUM	MINIMUM	AVG:MIN
ZONE 1	EAST PARKING	0.7 FC	0.9 FC	0.5 FC	1.4:1
ZONE 2	EAST DRIVES	0.5 FC	1.0 FC	0.2 FC	2.5:1
ZONE 3	SOUTH PARKING	0.6 FC	1.0 FC	0.2 FC	3:1
ZONE 4	WEST DRIVES/BUS LANES	0.6 FC	1.1 FC	0.3 FC	2:1



# 1 SITE PHOTOMETRICS PLAN - NORTH

1" = 30'-0"



NORTH



eppstein uhen : architects

milwaukee 333 East Chicago Street  
Milwaukee, Wisconsin 53202  
414.271.5350

madison 309 West Johnson Street, Suite 202  
Madison, Wisconsin 53703  
608.442.5350

des moines 699 Walnut Street, Suite 400  
Des Moines, Iowa 50309  
515.274.5840

denver 1899 Wynkoop Street, Suite 300  
Denver, Colorado 80202  
303.595.4500

CONSULTANTS



engineers | consultants | commissioning  
901 Whalen Road, Suite A | Verona, WI 53593  
P: 608.846.9556 | mepassociates.com

PROJECT INFORMATION

MIDDLETON -  
CROSS PLAINS  
ELEMENTARY  
SCHOOL

MADISON, WI

ISSUANCE AND REVISIONS

DATE	DESCRIPTION

KEY PLAN

SHEET INFORMATION

**PROGRESS DOCUMENTS  
NOT FOR CONSTRUCTION**

These documents reflect progress and intent and may be subject to change, including additional detail. These are not final construction documents and shall not be used for final bidding or construction-related purposes.

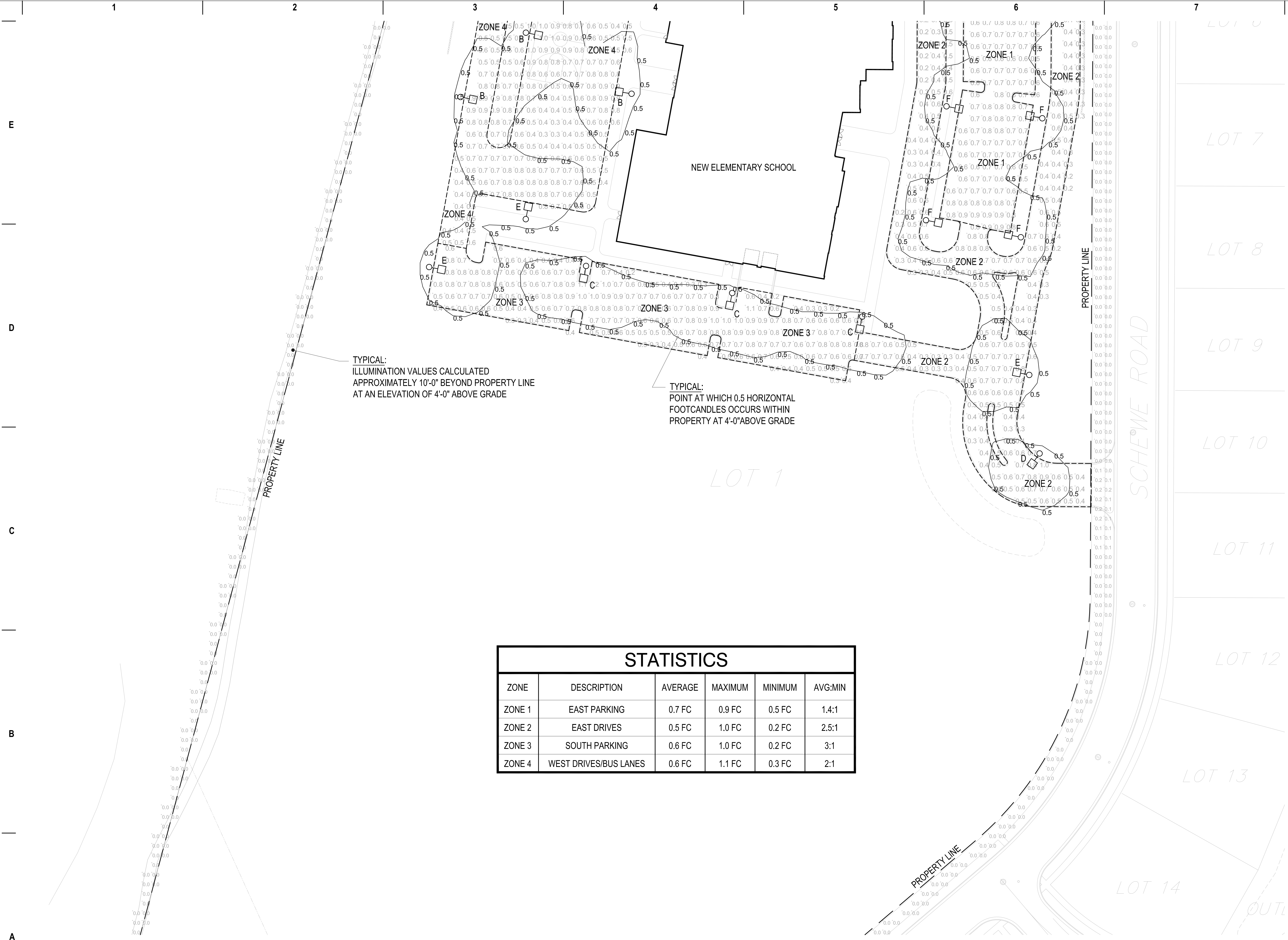
PROJECT MANAGER JKH

PROJECT NUMBER E08.18.02

SITE PHOTOMETRICS  
PLAN - CENTRAL

E003

© Eppstein Uhen Architects, Inc.

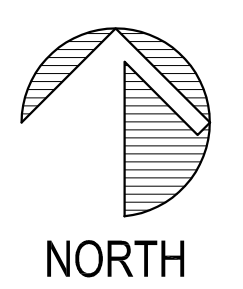


TYPICAL:  
ILLUMINATION VALUES CALCULATED  
APPROXIMATELY 10'-0" BEYOND PROPERTY LINE  
AT AN ELEVATION OF 4'-0" ABOVE GRADE

TYPICAL:  
POINT AT WHICH 0.5 HORIZONTAL  
FOOTCANDLES OCCURS WITHIN  
PROPERTY AT 4'-0" ABOVE GRADE

# 1 SITE PHOTOMETRICS PLAN - CENTRAL

1" = 30'-0"



NORTH



epstein uhen : architects

milwaukee 333 East Chicago Street  
Milwaukee, Wisconsin 53202  
414.271.5350

madison 309 West Johnson Street, Suite 202  
Madison, Wisconsin 53703  
608.442.5350

des moines 699 Walnut Street, Suite 400  
Des Moines, Iowa 50309  
515.274.5840

denver 1899 Wynkoop Street, Suite 300  
Denver, Colorado 80202  
303.595.4500

CONSULTANTS



engineers | consultants | commissioning  
901 Whalen Road, Suite A | Verona, WI 53593  
P: 608.848.9556 | mepassociates.com

PROJECT INFORMATION

MIDDLETON -  
CROSS PLAINS  
ELEMENTARY  
SCHOOL

MADISON, WI

ISSUANCE AND REVISIONS

DATE	DESCRIPTION

KEY PLAN

SHEET INFORMATION

**PROGRESS DOCUMENTS  
NOT FOR CONSTRUCTION**

These documents reflect progress and intent and may be subject to change, including additional detail. These are not final construction documents and shall not be used for final bidding or construction-related purposes.

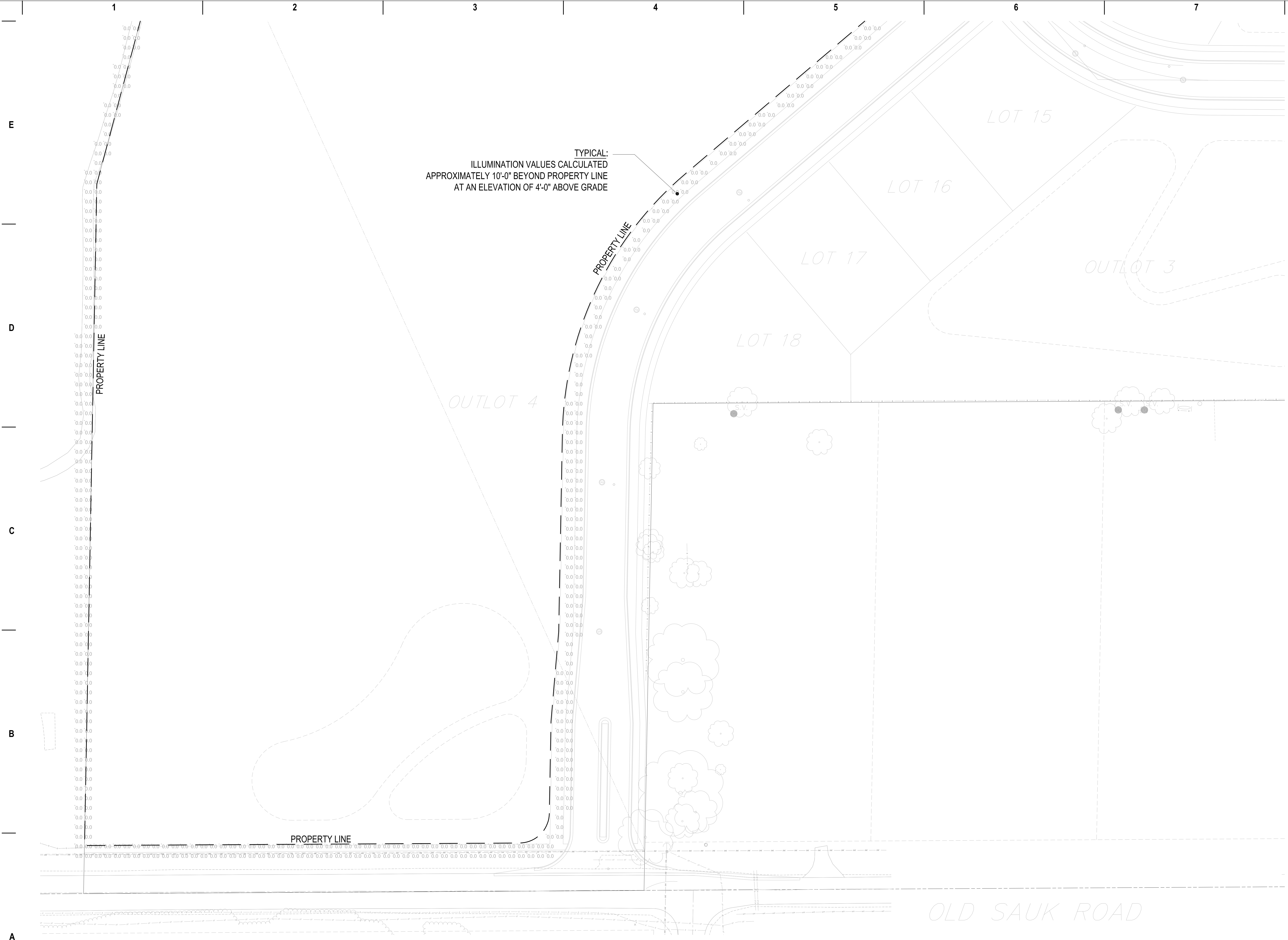
PROJECT MANAGER JKH

PROJECT NUMBER E08.18.02

SITE PHOTOMETRICS  
PLAN - SOUTH

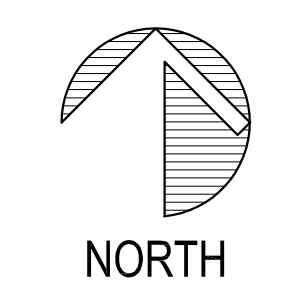
E004

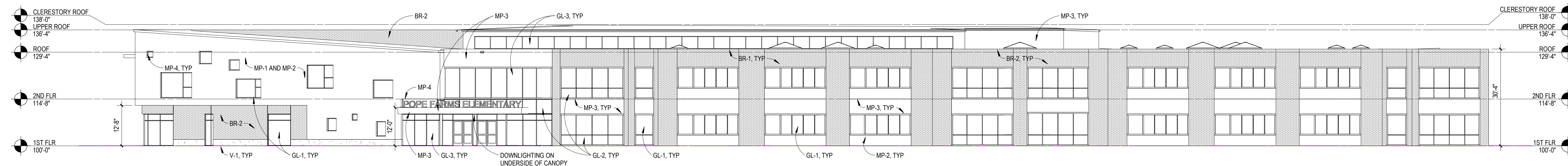
© Epstein Uhen Architects, Inc.



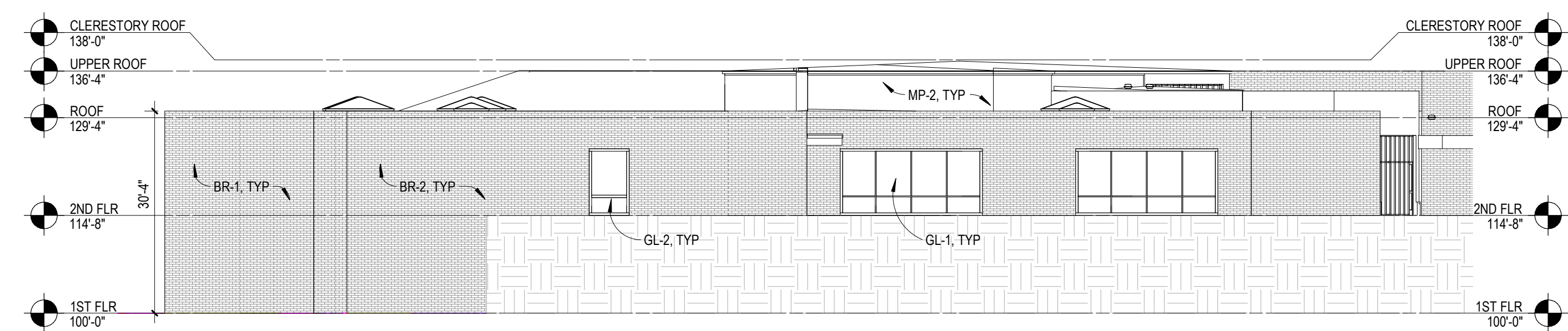
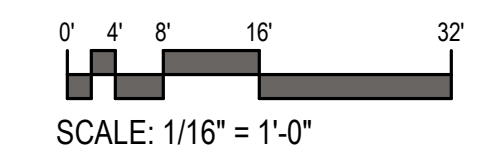
TYPICAL:  
ILLUMINATION VALUES CALCULATED  
APPROXIMATELY 10'-0" BEYOND PROPERTY LINE  
AT AN ELEVATION OF 4'-0" ABOVE GRADE

**1 SITE PHOTOMETRICS PLAN - SOUTH**  
1" = 30'-0"

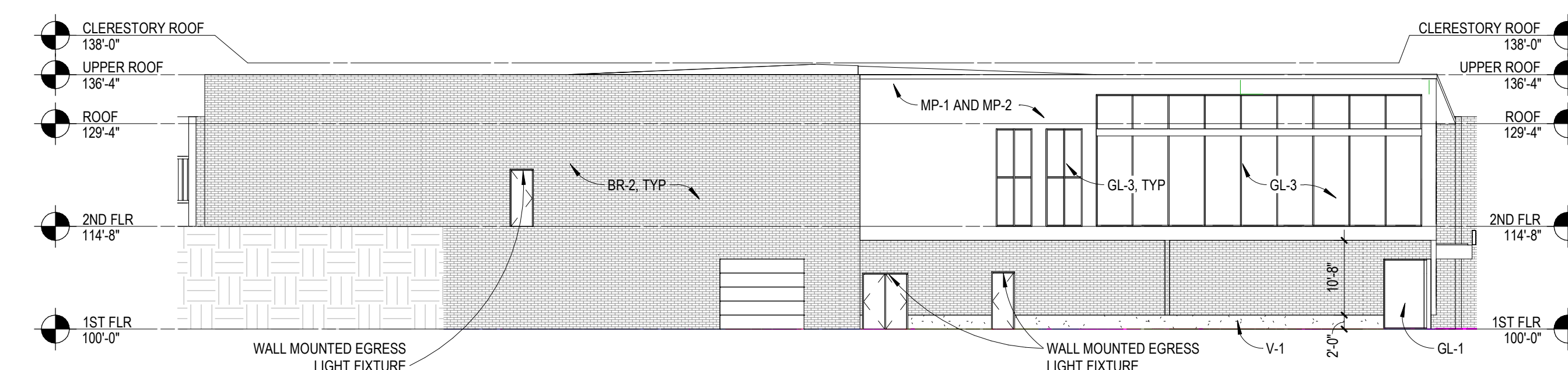
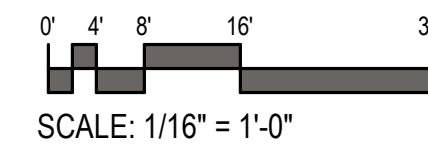




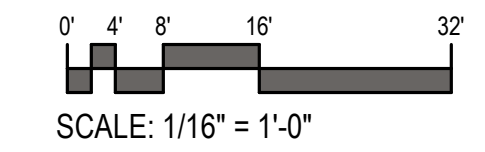
**C1** EAST ELEVATION  
1/16" = 1'-0"



**B2** NORTH ELEVATION  
1/16" = 1'-0"



**B5** SOUTH ELEVATION  
1/16" = 1'-0"



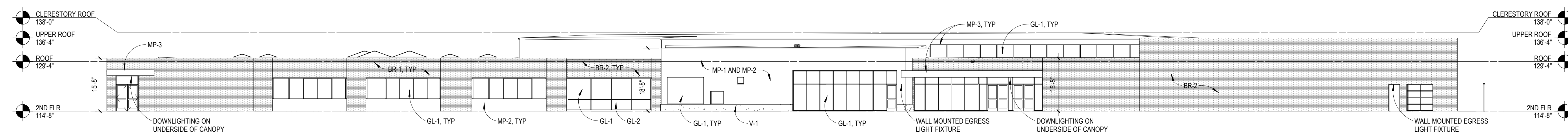
**EXTERIOR MATERIAL SCHEDULE**

- MP-1 DARK GREEN METAL PANEL
- MP-2 LIGHT GREEN METAL PANEL
- MP-3 DARK GRAY METAL PANEL
- MP-4 YELLOW METAL PANEL

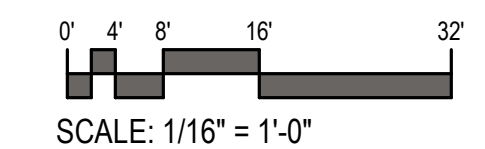
- BR-1 DARK GRAY BRICK
- BR-2 TAN BRICK

- GL-1 STOREFRONT
- GL-2 SPANDREL
- GL-3 CURTAIN WALL

- V-1 PRECAST VENEER



**A2** WEST ELEVATION  
1/16" = 1'-0"



OVERALL EXTERIOR ELEVATIONS - BLACK AND WHITE



AERIAL VIEW - LOOKING EAST



VIEW - LOOKING EAST



AERIAL VIEW - LOOKING WEST

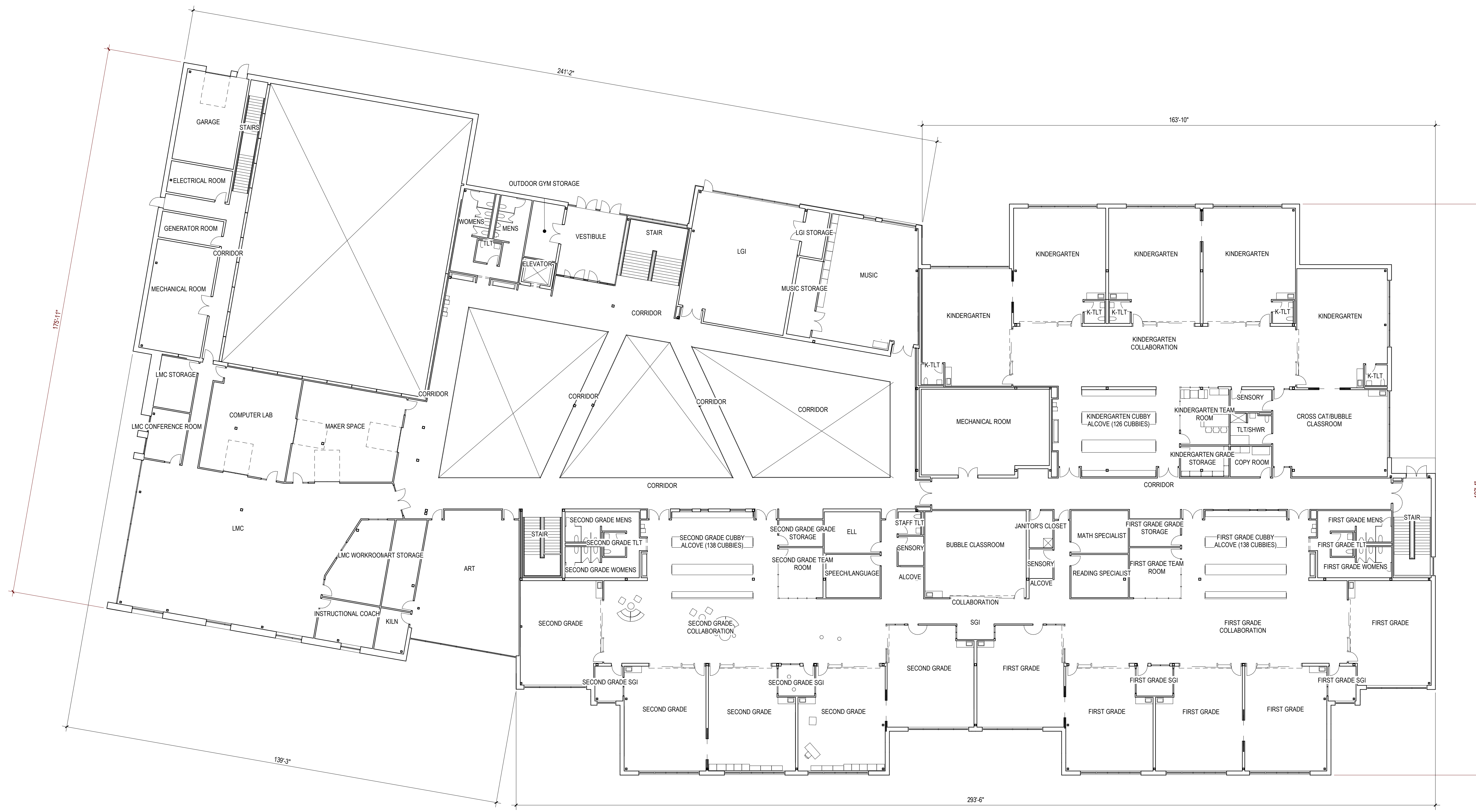


VIEW - LOOKING WEST

CONTEXTUAL SITE INFORMATION



**A2** FIRST FLOOR OVERALL PLAN  
 1/16" = 1'-0"  
 TRUE



**A2** SECOND FLOOR OVERALL PLAN  
 1/16" = 1'-0"  
 TRUE

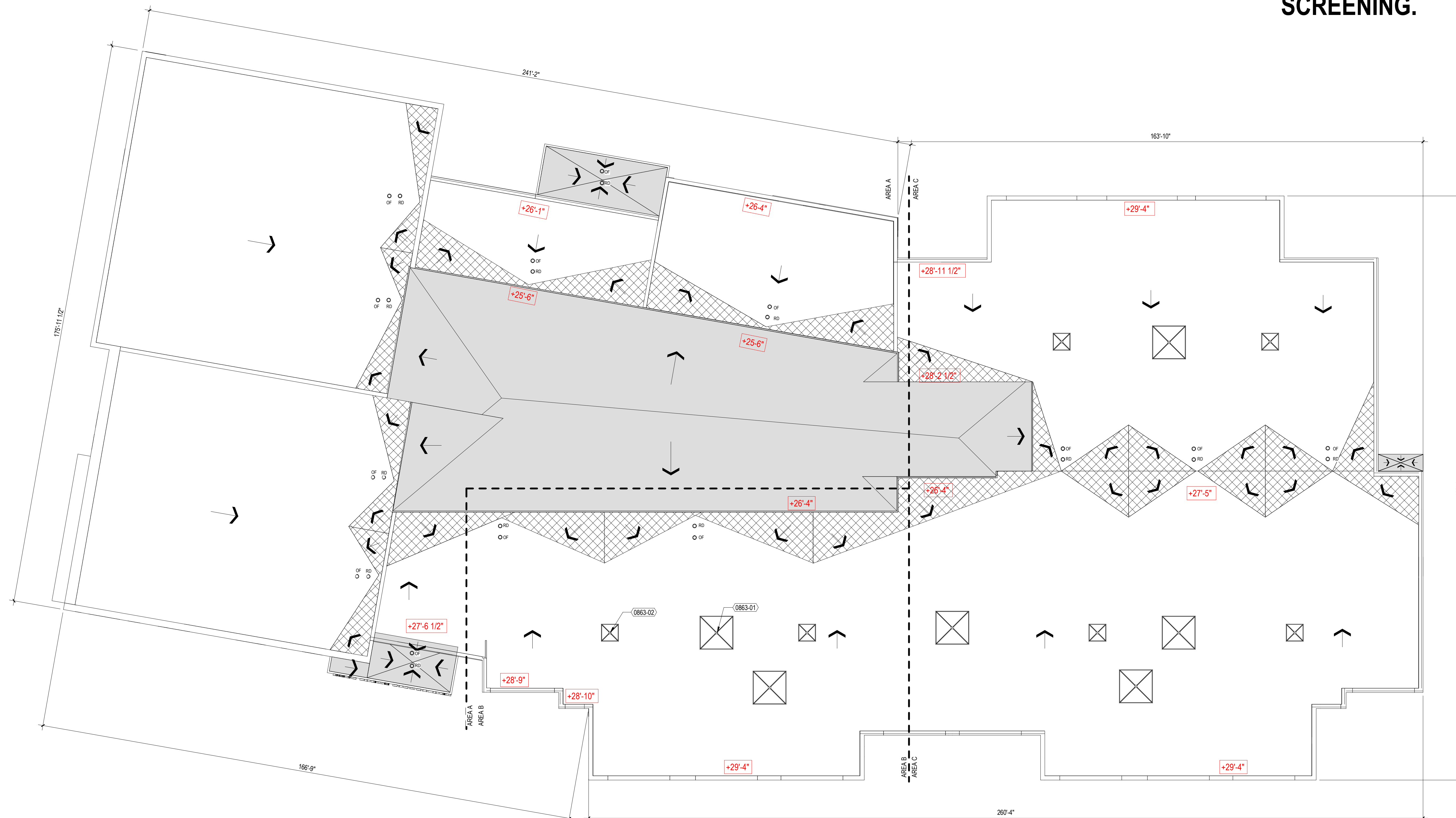
**KEYNOTES PER SHEET**

0863-01 METAL-FRAMED SKYLIGHT #1 (LARGE)  
 0863-02 METAL-FRAMED SKYLIGHT #2 (SMALL)

**ROOF PLAN LEGEND**

RD	INDICATES ROOF DRAIN WITH SUMP PAN
OF	INDICATES OVERFLOW ROOF DRAIN WITH SUMP PAN
←	INDICATES SLOPE DIRECTION OF ROOF AND TAPERED INSULATION
□	NO HATCH INDICATES SLOPED STRUCTURE
■	INDICATES FLAT STRUCTURE AND TAPERED INSULATION WITH MINIMUM SLOPE OF 1/4" PER FOOT, UNLESS NOTED OTHERWISE
⊠	INDICATES TAPERED INSULATION/SADDLES/CRICKETS WITH MINIMUM SLOPE OF 1/2" PER FOOT, UNLESS NOTED OTHERWISE

**ROOF WILL NOT HOUSE MECHANICAL UNITS OR SCREENING.**



**A2** OVERALL ROOF PLAN  
 1/16" = 1'-0"  
 TRUE





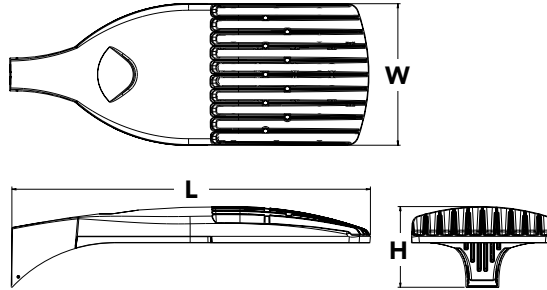
# D-Series Size 1 LED Area Luminaire

d#series



## Specifications

<b>EPA:</b>	1.01 ft <sup>2</sup> (0.09 m <sup>2</sup> )
<b>Length:</b>	33" (83.8 cm)
<b>Width:</b>	13" (33.0 cm)
<b>Height:</b>	7-1/2" (19.0 cm)
<b>Weight (max):</b>	27 lbs (12.2 kg)



A+ Capable options indicated by this color background.

Catalog Number
Notes
Type

Hit the Tab key or mouse over the page to see all interactive elements.

## Capable Luminaire

This item is an A+ capable luminaire, which has been designed and tested to provide consistent color appearance and system-level interoperability.

- All configurations of this luminaire meet the Acuity Brands' specification for chromatic consistency
- This luminaire is A+ Certified when ordered with DTL<sup>®</sup> controls marked by a shaded background. DTL DLL equipped luminaires meet the A+ specification for luminaire to photocontrol interoperability<sup>1</sup>
- This luminaire is part of an A+ Certified solution for ROAM<sup>®</sup> or XPoint<sup>™</sup> Wireless control networks, providing out-of-the-box control compatibility with simple commissioning, when ordered with drivers and control options marked by a shaded background<sup>1</sup>

To learn more about A+, visit [www.acuitybrands.com/aplus](http://www.acuitybrands.com/aplus).

- See ordering tree for details.
- A+ Certified Solutions for ROAM require the order of one ROAM node per luminaire. Sold Separately: [Link to Roam](#); [Link to DTL DLL](#)

## Ordering Information

**EXAMPLE: DSX1 LED P7 40K T3M MVOLT SPA DDBXD**

Series	LEDs	Color temperature	Distribution	Voltage	Mounting
DSX1 LED	<b>Forward optics</b> P1 P4 P7 P2 P5 P8 P3 P6 P9 <b>Rotated optics</b> P10 <sup>1</sup> P12 <sup>1</sup> P11 <sup>1</sup> P13 <sup>1</sup>	30K 3000 K 40K 4000 K 50K 5000 K AMBPC Amber phosphor converted <sup>2</sup>	T1S Type I short T2S Type II short T2M Type II medium T3S Type III short T3M Type III medium T4M Type IV medium TFTM Forward throw medium TSVS Type V very short T5S Type V short T5M Type V medium T5W Type V wide BLC Backlight control <sup>2,3</sup> LCCO Left corner cutoff <sup>2,3</sup> RCCO Right corner cutoff <sup>2,3</sup>	MVOLT <sup>4,5</sup> 120 <sup>6</sup> 208 <sup>5,6</sup> 240 <sup>5,6</sup> 277 <sup>6</sup> 347 <sup>5,6,7</sup> 480 <sup>5,6,7</sup>	<b>Shipped included</b> SPA Square pole mounting RPA Round pole mounting WBA Wall bracket SPUMBA Square pole universal mounting adaptor <sup>8</sup> RPUMBA Round pole universal mounting adaptor <sup>8</sup> <b>Shipped separately</b> KMA8 DDBXD U Mast arm mounting bracket adaptor (specify finish) <sup>9</sup>

Control options	Other options	Finish (required)
<b>Shipped installed</b> NLTAIR2 nLight AIR generation 2 enabled <sup>10</sup> PER NEMA twist-lock receptacle only (controls ordered separate) <sup>11</sup> PER5 Five-wire receptacle only (controls ordered separate) <sup>11,12</sup> PER7 Seven-wire receptacle only (controls ordered separate) <sup>11,12</sup> DMG 0-10V dimming extend out back of housing for external control (leads exit fixture) DS Dual switching <sup>13,14</sup> PIR Bi-level, motion/ambient sensor, 8-15' mounting height, ambient sensor enabled at 5fc <sup>5,15,16</sup> PIRH Bi-level, motion/ambient sensor, 15-30' mounting height, ambient sensor enabled at 5fc <sup>5,15,16</sup> PIRHN Network, Bi-Level motion/ambient sensor <sup>17</sup> PIR1FC3V Bi-level, motion/ambient sensor, 8-15' mounting height, ambient sensor enabled at 1fc <sup>5,15,16</sup>	PIRH1FC3V Bi-level, motion/ambient sensor, 15-30' mounting height, ambient sensor enabled at 1fc <sup>5,15,16</sup> BL30 Bi-level switched dimming, 30% <sup>5,14,18</sup> BL50 Bi-level switched dimming, 50% <sup>5,14,18</sup> PNMTDD3 Part night, dim till dawn <sup>5,19</sup> PNMT5D3 Part night, dim 5 hrs <sup>5,19</sup> PNMT6D3 Part night, dim 6 hrs <sup>5,19</sup> PNMT7D3 Part night, dim 7 hrs <sup>5,19</sup> FAO Field adjustable output <sup>20</sup>	<b>Shipped installed</b> HS House-side shield <sup>21</sup> SF Single fuse (120, 277, 347V) <sup>6</sup> DF Double fuse (208, 240, 480V) <sup>6</sup> L90 Left rotated optics <sup>1</sup> R90 Right rotated optics <sup>1</sup> <b>Shipped separately</b> BS Bird spikes <sup>22</sup> EGS External glare shield <sup>22</sup>
		DDBXD Dark bronze DBLXD Black DNAXD Natural aluminum DWHXD White DDBTXD Textured dark bronze DBLTXD Textured black DNATXD Textured natural aluminum DWHGXD Textured white



# Ordering Information

## Accessories

Ordered and shipped separately.

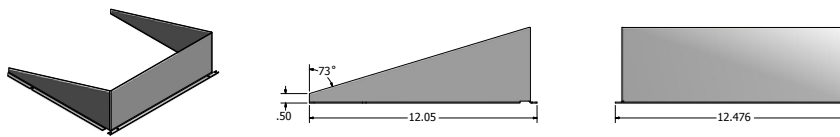
DLL127F 1.5 JU	Photocell - SSL twist-lock (120-277V) <sup>23</sup>
DLL347F 1.5 CUL JU	Photocell - SSL twist-lock (347V) <sup>23</sup>
DLL480F 1.5 CUL JU	Photocell - SSL twist-lock (480V) <sup>23</sup>
DSHORT SBK U	Shorting cap <sup>23</sup>
DSX1HS 30C U	House-side shield for 30 LED unit <sup>21</sup>
DSX1HS 40C U	House-side shield for 40 LED unit <sup>21</sup>
DSX1HS 60C U	House-side shield for 60 LED unit <sup>21</sup>
PUMBA DDBXD U*	Square and round pole universal mounting bracket (specify finish) <sup>24</sup>
KMA8 DDBXD U	Mast arm mounting bracket adaptor (specify finish) <sup>4</sup>

For more control options, visit [DTL](#) and [ROAM](#) online.

## NOTES

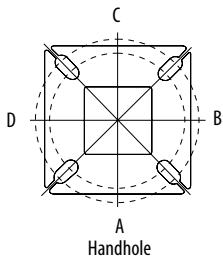
- P10, P11, P12 or P13 and rotated optics (L90, R90) only available together.
- AMBPC is not available with BLC, LCCO, RCCO or P4, P7, P8, P9 or P13.
- Not available with HS.
- MVOLT driver operates on any line voltage from 120-277V (50/60 Hz).
- Any PIRx with BL30, BL50 or PNMT, is not available with 208V, 240V, 347V, 480V or MVOLT. It is only available in 120V or 277V specified.
- Single fuse (SF) requires 120V, 277V or 347V. Double fuse (DF) requires 208V, 240V or 480V.
- Not available in P1 or P10. Not available with BL30, BL50 or PNMT options.
- Existing drilled pole only. Available as a separate combination accessory; for retrofit use only: PUMBA (finish) U; 1.5 G vibration load rating per ANCI C136.31.
- Must order fixture with SPA option. Must be ordered as a separate accessory; see Accessories information. For use with 2-3/8" mast arm (not included).
- Must be ordered with PIRHN.
- Photocell ordered and shipped as a separate line item from Acuity Brands Controls. See accessories. Not available with DS option. Shorting cap included.
- If ROAM<sup>®</sup> node required, it must be ordered and shipped as a separate line item from Acuity Brands Controls. Not available with DCR. Node with integral dimming. Shorting cap included.
- Provides 50/50 fixture operation via (2) independent drivers. Not available with PER, PER5, PER7, PIR or PIRH. Not available P1, P2, P3, P4 or P5.
- Requires (2) separately switched circuits.
- Reference Motion Sensor table on page 3.
- Reference PER table on page 3 to see functionality.
- Must be ordered with NLTAIR2. For more information on nLight Air 2 visit [this link](#).
- Not available with 347V, 480V, PNMT, DS. For PER5 or PER7, see PER Table on page 3. Requires isolated neutral.
- Not available with 347V, 480V, DS, BL30, BL50. For PER5 or PER7, see PER Table on page 3. Separate Dusk to Dawn required.
- Not available with other dimming controls options
- Not available with BLC, LCCO and RCCO distribution. Also available as a separate accessory; see Accessories information.
- Must be ordered with fixture for factory pre-drilling.
- Requires luminaire to be specified with PER, PER5 or PER7 option. See PER Table on page 3.
- For retrofit use only.

## External Glare Shield



## Drilling

### HANDHOLE ORIENTATION



### Tenon Mounting Slipfitter\*\*

Tenon O.D.	Single Unit	2 at 180°	2 at 90°	3 at 120°	3 at 90°	4 at 90°
2-3/8"	AST20-190	AST20-280	AST20-290	AST20-320	AST20-390	AST20-490
2-7/8"	AST25-190	AST25-280	AST25-290	AST25-320	AST25-390	AST25-490
4"	AST35-190	AST35-280	AST35-290	AST35-320	AST35-390	AST35-490

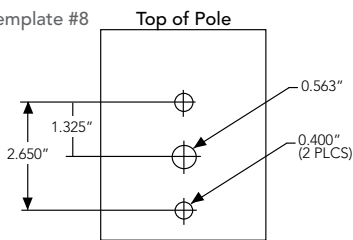
Pole drilling nomenclature: # of heads at degree from handhole (default side A)					
DM19AS	DM28AS	DM29AS	DM32AS	DM39AS	DM49AS
1 @ 90°	2 @ 280°	2 @ 90°	3 @ 120°	3 @ 90°	4 @ 90°
Side B	Side B & D	Side B & C	Round pole only	Side B, C, & D	Sides A, B, C, D

Note: Review luminaire spec sheet for specific nomenclature

Pole top or tenon O.D.	4.5" @ 90°	4" @ 90°	3.5" @ 90°	3" @ 90°	4.5" @ 120°	4" @ 120°	3.5" @ 120°	3" @ 120°
DSX SPA	Y	Y	Y	N	-	-	-	-
DSX RPA	Y	Y	N	N	Y	Y	Y	Y
DSX SPUMBA	Y	N	N	N	-	-	-	-
DSX RPUMBA	N	N	N	N	Y	Y	Y	N

\*3 fixtures @120 require round pole top/tenon.

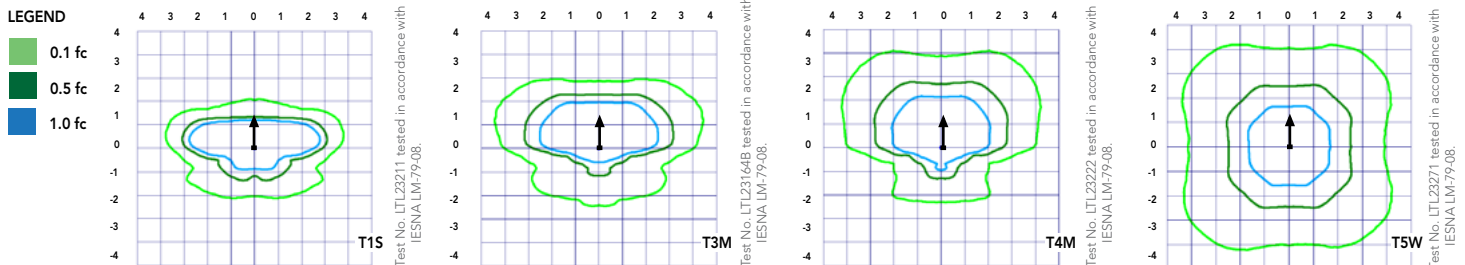
Template #8



## Photometric Diagrams

To see complete photometric reports or download .ies files for this product, visit Lithonia Lighting's [D-Series Area Size 1 homepage](#).

Isofootcandle plots for the DSX1 LED 60C 1000 40K. Distances are in units of mounting height (25').



## Performance Data

### Lumen Ambient Temperature (LAT) Multipliers

Use these factors to determine relative lumen output for average ambient temperatures from 0-40°C (32-104°F).

Ambient		Lumen Multiplier
0°C	32°F	1.04
5°C	41°F	1.04
10°C	50°F	1.03
15°C	59°F	1.02
20°C	68°F	1.01
<b>25°C</b>	<b>77°F</b>	<b>1.00</b>
30°C	86°F	0.99
35°C	95°F	0.98
40°C	104°F	0.97

### Projected LED Lumen Maintenance

Data references the extrapolated performance projections for the platforms noted in a **25°C ambient**, based on 10,000 hours of LED testing (tested per IESNA LM-80-08 and projected per IESNA TM-21-11).

To calculate LLF, use the lumen maintenance factor that corresponds to the desired number of operating hours below. For other lumen maintenance values, contact factory.

Operating Hours	0	25000	50000	100000
Lumen Maintenance Factor	1.00	0.96	0.92	0.85

### Electrical Load

	Performance Package	LED Count	Drive Current	Wattage	Current (A)					
					120	208	240	277	347	480
Forward Optics (Non-Rotated)	P1	30	530	54	0.45	0.26	0.23	0.19	0.10	0.12
	P2	30	700	70	0.59	0.34	0.30	0.25	0.20	0.16
	P3	30	1050	102	0.86	0.50	0.44	0.38	0.30	0.22
	P4	30	1250	125	1.06	0.60	0.52	0.46	0.37	0.27
	P5	30	1400	138	1.16	0.67	0.58	0.51	0.40	0.29
	P6	40	1250	163	1.36	0.78	0.68	0.59	0.47	0.34
	P7	40	1400	183	1.53	0.88	0.76	0.66	0.53	0.38
	P8	60	1050	207	1.74	0.98	0.87	0.76	0.64	0.49
	P9	60	1250	241	2.01	1.16	1.01	0.89	0.70	0.51
Rotated Optics (Requires L90 or R90)	P10	60	530	106	0.90	0.52	0.47	0.43	0.33	0.27
	P11	60	700	137	1.15	0.67	0.60	0.53	0.42	0.32
	P12	60	1050	207	1.74	0.99	0.87	0.76	0.60	0.46
	P13	60	1250	231	1.93	1.12	0.97	0.86	0.67	0.49

### Motion Sensor Default Settings

Option	Dimmed State	High Level (when triggered)	Photocell Operation	Dwell Time	Ramp-up Time	Ramp-down Time
PIR or PIRH	3V (37%) Output	10V (100%) Output	Enabled @ 5FC	5 min	3 sec	5 min
*PIR1FC3V or PIRH1FC3V	3V (37%) Output	10V (100%) Output	Enabled @ 1FC	5 min	3 sec	5 min

\*for use with Inline Dusk to Dawn or timer.

### PER Table

Control	PER (3 wire)	PER5 (5 wire)		PER7 (7 wire)		
		Wire 4/Wire5	Wire 4/Wire5	Wire 4/Wire5	Wire 6/Wire7	
Photocontrol Only (On/Off)	✓	▲	Wired to dimming leads on driver	▲	Wired to dimming leads on driver	Wires Capped inside fixture
ROAM	✗	✓	Wired to dimming leads on driver	▲	Wired to dimming leads on driver	Wires Capped inside fixture
ROAM with Motion (ROAM on/off only)	✗	▲	Wires Capped inside fixture	▲	Wires Capped inside fixture	Wires Capped inside fixture
Future-proof*	✗	▲	Wired to dimming leads on driver	✓	Wired to dimming leads on driver	Wires Capped inside fixture
Future-proof* with Motion	✗	▲	Wires Capped inside fixture	✓	Wires Capped inside fixture	Wires Capped inside fixture

✓ Recommended
✗ Will not work
▲ Alternate

\*Future-proof means: Ability to change controls in the future.







---

## FEATURES & SPECIFICATIONS

### INTENDED USE

The sleek design of the D-Series Size 1 reflects the embedded high performance LED technology. It is ideal for many commercial and municipal applications, such as parking lots, plazas, campuses, and streetscapes.

### CONSTRUCTION

Single-piece die-cast aluminum housing has integral heat sink fins to optimize thermal management through conductive and convective cooling. Modular design allows for ease of maintenance and future light engine upgrades. The LED drivers are mounted in direct contact with the casting to promote low operating temperature and long life. Housing is completely sealed against moisture and environmental contaminants (IP65). Low EPA (1.01 ft<sup>2</sup>) for optimized pole wind loading.

### FINISH

Exterior parts are protected by a zinc-infused Super Durable TGIC thermoset powder coat finish that provides superior resistance to corrosion and weathering. A tightly controlled multi-stage process ensures a minimum 3 mils thickness for a finish that can withstand extreme climate changes without cracking or peeling. Available in both textured and non-textured finishes.

### OPTICS

Precision-molded proprietary acrylic lenses are engineered for superior area lighting distribution, uniformity, and pole spacing. Light engines are available in standard 3000 K, 4000 K and 5000 K (70 CRI) configurations. The D-Series Size 1 has zero uplight and qualifies as a Nighttime Friendly™ product, meaning it is consistent with the LEED® and Green Globes™ criteria for eliminating wasteful uplight.

### ELECTRICAL

Light engine configurations consist of high-efficacy LEDs mounted to metal-core circuit boards to maximize heat dissipation and promote long life (up to L85/100,000 hours at 25°C). Class 1

electronic drivers are designed to have a power factor >90%, THD <20%, and an expected life of 100,000 hours with <1% failure rate. Easily serviceable 10kV surge protection device meets a minimum Category C Low operation (per ANSI/IEEE C62.41.2).

### INSTALLATION

Included mounting block and integral arm facilitate quick and easy installation. Stainless steel bolts fasten the mounting block securely to poles and walls, enabling the D-Series Size 1 to withstand up to a 3.0 G vibration load rating per ANSI C136.31. The D-Series Size 1 utilizes the AERIS™ series pole drilling pattern (template #8). Optional terminal block and NEMA photocontrol receptacle are also available.

### LISTINGS

UL Listed for wet locations. Light engines are IP66 rated; luminaire is IP65 rated. Rated for -40°C minimum ambient. U.S. Patent No. D672,492 S. International patent pending.

DesignLights Consortium® (DLC) Premium qualified product and DLC qualified product. Not all versions of this product may be DLC Premium qualified or DLC qualified. Please check the DLC Qualified Products List at [www.designlights.org/QPL](http://www.designlights.org/QPL) to confirm which versions are qualified.

International Dark-Sky Association (IDA) Fixture Seal of Approval (FSA) is available for all products on this page utilizing 3000K color temperature only.

### WARRANTY

5-year limited warranty. Complete warranty terms located at: [www.acuitybrands.com/CustomerResources/Terms\\_and\\_conditions.aspx](http://www.acuitybrands.com/CustomerResources/Terms_and_conditions.aspx)

**Note:** Actual performance may differ as a result of end-user environment and application. All values are design or typical values, measured under laboratory conditions at 25 °C. Specifications subject to change without notice.



## LIGHT FIXTURE SCHEDULE

TYPE	DESCRIPTION	MANUFACTURER	REFERENCE CATALOG #	LAMPS	WATTS	VOLTS	NOTES
A	13"W X 8"H x 33"D AREA FIXTURE, 30 LED ENGINE, 530mA DRIVE CURRENT, 4000K CCT, TYPE II SHORT DISTRIBUTION, HOUSE-SIDE SHIELD, ROUND POLE MOUNTING OPTION, NATURAL ALUMINUM FINISH	LITHONIA	DSX1 LED P1 40K T2S MVOLT RPA HS	LED 6,900 LUMENS	54	MVOLT	1
B	13"W X 8"H x 33"D AREA FIXTURE, 30 LED ENGINE, 530mA DRIVE CURRENT, 4000K CCT, TYPE II MEDIUM DISTRIBUTION, HOUSE-SIDE SHIELD, ROUND POLE MOUNTING OPTION, NATURAL ALUMINUM FINISH	LITHONIA	DSX1 LED P1 40K T2M MVOLT RPA HS	LED 6,900 LUMENS	54	MVOLT	1
C	13"W X 8"H x 33"D AREA FIXTURE, 30 LED ENGINE, 700mA DRIVE CURRENT, 4000K CCT, TYPE III MEDIUM DISTRIBUTION, HOUSE-SIDE SHIELD, ROUND POLE MOUNTING OPTION, NATURAL ALUMINUM FINISH	LITHONIA	DSX1 LED P2 40K T3M MVOLT RPA HS	LED 8,900 LUMENS	70	MVOLT	1
D	13"W X 8"H x 33"D AREA FIXTURE, 30 LED ENGINE, 530mA DRIVE CURRENT, 4000K CCT, TYPE IV MEDIUM DISTRIBUTION, HOUSE-SIDE SHIELD, ROUND POLE MOUNTING OPTION, NATURAL ALUMINUM FINISH	LITHONIA	DSX1 LED P1 40K T4M MVOLT RPA HS	LED 6,800 LUMENS	54	MVOLT	1
E	13"W X 8"H x 33"D AREA FIXTURE, 30 LED ENGINE, 530mA DRIVE CURRENT, 4000K CCT, TYPE V MEDIUM DISTRIBUTION, HOUSE-SIDE SHIELD, ROUND POLE MOUNTING OPTION, NATURAL ALUMINUM FINISH	LITHONIA	DSX1 LED P1 40K T5M MVOLT RPA HS	LED 7,200 LUMENS	54	MVOLT	1
F	13"W X 8"H x 33"D AREA FIXTURE, 30 LED ENGINE, 530mA DRIVE CURRENT, 4000K CCT, FORWARD THROW MEDIUM DISTRIBUTION, HOUSE-SIDE SHIELD, ROUND POLE MOUNTING OPTION, NATURAL ALUMINUM FINISH	LITHONIA	DSX1 LED P1 40K TFTM MVOLT RPA HS	LED 6,900 LUMENS	54	MVOLT	1

**NOTES:**

1. FIXTURE SHALL BE MOUNTED ON A 27'-0" TALL, ROUND TAPERED, ANODIZED ALUMINUM (WITH OPTIONAL POWDER COAT FINISH) CONTINUOUS POLE WITH HAND HOLE AND VIBRATION DAMPENERS. POLE SHALL BE MOUNTED TO A 24" DIAMETER, 30" HIGH EXTENDED POLE BASE WITH SQUARE METAL BASE. ENTIRE ASSEMBLY SHALL BE CAPABLE OF WITHSTANDING 100 MILE PER HOUR VELOCITY. FIXTURE MOUNTING HEIGHT SHALL NOT EXCEED 30'-0" ABOVE FINISHED GRADE.





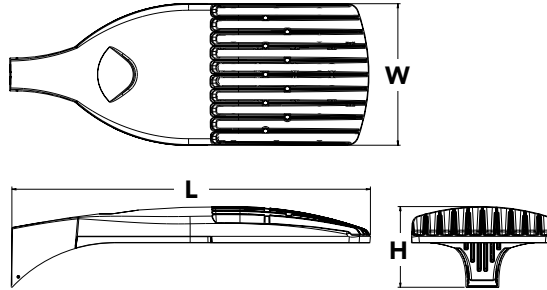
# D-Series Size 1 LED Area Luminaire

d#series



## Specifications

<b>EPA:</b>	1.01 ft <sup>2</sup> (0.09 m <sup>2</sup> )
<b>Length:</b>	33" (83.8 cm)
<b>Width:</b>	13" (33.0 cm)
<b>Height:</b>	7-1/2" (19.0 cm)
<b>Weight (max):</b>	27 lbs (12.2 kg)



A+ Capable options indicated by this color background.

Catalog Number
Notes
Type

Hit the Tab key or mouse over the page to see all interactive elements.

## Capable Luminaire

This item is an A+ capable luminaire, which has been designed and tested to provide consistent color appearance and system-level interoperability.

- All configurations of this luminaire meet the Acuity Brands' specification for chromatic consistency
- This luminaire is A+ Certified when ordered with DTL<sup>®</sup> controls marked by a shaded background. DTL DLL equipped luminaires meet the A+ specification for luminaire to photocontrol interoperability<sup>1</sup>
- This luminaire is part of an A+ Certified solution for ROAM<sup>®</sup> or XPoint<sup>™</sup> Wireless control networks, providing out-of-the-box control compatibility with simple commissioning, when ordered with drivers and control options marked by a shaded background<sup>1</sup>

To learn more about A+, visit [www.acuitybrands.com/aplus](http://www.acuitybrands.com/aplus).

- See ordering tree for details.
- A+ Certified Solutions for ROAM require the order of one ROAM node per luminaire. Sold Separately: [Link to Roam](#); [Link to DTL DLL](#)

## Ordering Information

**EXAMPLE: DSX1 LED P7 40K T3M MVOLT SPA DDBXD**

Series	LEDs	Color temperature	Distribution	Voltage	Mounting
DSX1 LED	<b>Forward optics</b> P1 P4 P7 P2 P5 P8 P3 P6 P9 <b>Rotated optics</b> P10 <sup>1</sup> P12 <sup>1</sup> P11 <sup>1</sup> P13 <sup>1</sup>	30K 3000 K 40K 4000 K 50K 5000 K AMBPC Amber phosphor converted <sup>2</sup>	T1S Type I short T2S Type II short T2M Type II medium T3S Type III short T3M Type III medium T4M Type IV medium TFTM Forward throw medium TSVS Type V very short T5S Type V short T5M Type V medium T5W Type V wide BLC Backlight control <sup>2,3</sup> LCCO Left corner cutoff <sup>2,3</sup> RCCO Right corner cutoff <sup>2,3</sup>	MVOLT <sup>4,5</sup> 120 <sup>6</sup> 208 <sup>5,6</sup> 240 <sup>5,6</sup> 277 <sup>6</sup> 347 <sup>5,6,7</sup> 480 <sup>5,6,7</sup>	<b>Shipped included</b> SPA Square pole mounting RPA Round pole mounting WBA Wall bracket SPUMBA Square pole universal mounting adaptor <sup>8</sup> RPUMBA Round pole universal mounting adaptor <sup>8</sup> <b>Shipped separately</b> KMA8 DDBXD U Mast arm mounting bracket adaptor (specify finish) <sup>9</sup>

Control options	Other options	Finish (required)
<b>Shipped installed</b> NLTAIR2 nLight AIR generation 2 enabled <sup>10</sup> PER NEMA twist-lock receptacle only (controls ordered separate) <sup>11</sup> PER5 Five-wire receptacle only (controls ordered separate) <sup>11,12</sup> PER7 Seven-wire receptacle only (controls ordered separate) <sup>11,12</sup> DMG 0-10V dimming extend out back of housing for external control (leads exit fixture) DS Dual switching <sup>13,14</sup> PIR Bi-level, motion/ambient sensor, 8-15' mounting height, ambient sensor enabled at 5fc <sup>5,15,16</sup> PIRH Bi-level, motion/ambient sensor, 15-30' mounting height, ambient sensor enabled at 5fc <sup>5,15,16</sup> PIRHN Network, Bi-Level motion/ambient sensor <sup>17</sup> PIR1FC3V Bi-level, motion/ambient sensor, 8-15' mounting height, ambient sensor enabled at 1fc <sup>5,15,16</sup>	PIRH1FC3V Bi-level, motion/ambient sensor, 15-30' mounting height, ambient sensor enabled at 1fc <sup>5,15,16</sup> BL30 Bi-level switched dimming, 30% <sup>5,14,18</sup> BL50 Bi-level switched dimming, 50% <sup>5,14,18</sup> PNMTDD3 Part night, dim till dawn <sup>5,19</sup> PNMT5D3 Part night, dim 5 hrs <sup>5,19</sup> PNMT6D3 Part night, dim 6 hrs <sup>5,19</sup> PNMT7D3 Part night, dim 7 hrs <sup>5,19</sup> FAO Field adjustable output <sup>20</sup>	<b>Shipped installed</b> HS House-side shield <sup>21</sup> SF Single fuse (120, 277, 347V) <sup>6</sup> DF Double fuse (208, 240, 480V) <sup>6</sup> L90 Left rotated optics <sup>1</sup> R90 Right rotated optics <sup>1</sup> <b>Shipped separately</b> BS Bird spikes <sup>22</sup> EGS External glare shield <sup>22</sup>



# Ordering Information

## Accessories

Ordered and shipped separately.

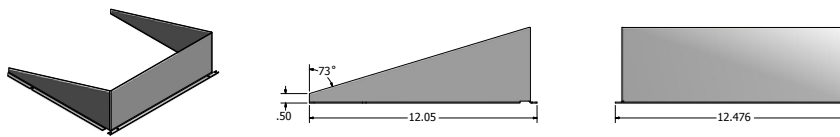
DLL127F 1.5 JU	Photocell - SSL twist-lock (120-277V) <sup>23</sup>
DLL347F 1.5 CUL JU	Photocell - SSL twist-lock (347V) <sup>23</sup>
DLL480F 1.5 CUL JU	Photocell - SSL twist-lock (480V) <sup>23</sup>
DSHORT SBK U	Shorting cap <sup>23</sup>
DSX1HS 30C U	House-side shield for 30 LED unit <sup>21</sup>
DSX1HS 40C U	House-side shield for 40 LED unit <sup>21</sup>
DSX1HS 60C U	House-side shield for 60 LED unit <sup>21</sup>
PUMBA DDBXD U*	Square and round pole universal mounting bracket (specify finish) <sup>24</sup>
KMA8 DDBXD U	Mast arm mounting bracket adaptor (specify finish) <sup>4</sup>

For more control options, visit [DTL](#) and [ROAM](#) online.

## NOTES

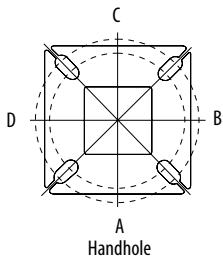
- P10, P11, P12 or P13 and rotated optics (L90, R90) only available together.
- AMBPC is not available with BLC, LCCO, RCCO or P4, P7, P8, P9 or P13.
- Not available with HS.
- MVOLT driver operates on any line voltage from 120-277V (50/60 Hz).
- Any PIRx with BL30, BL50 or PNMT, is not available with 208V, 240V, 347V, 480V or MVOLT. It is only available in 120V or 277V specified.
- Single fuse (SF) requires 120V, 277V or 347V. Double fuse (DF) requires 208V, 240V or 480V.
- Not available in P1 or P10. Not available with BL30, BL50 or PNMT options.
- Existing drilled pole only. Available as a separate combination accessory; for retrofit use only: PUMBA (finish) U; 1.5 G vibration load rating per ANCI C136.31.
- Must order fixture with SPA option. Must be ordered as a separate accessory; see Accessories information. For use with 2-3/8" mast arm (not included).
- Must be ordered with PIRHN.
- Photocell ordered and shipped as a separate line item from Acuity Brands Controls. See accessories. Not available with DS option. Shorting cap included.
- If ROAM<sup>®</sup> node required, it must be ordered and shipped as a separate line item from Acuity Brands Controls. Not available with DCR. Node with integral dimming. Shorting cap included.
- Provides 50/50 fixture operation via (2) independent drivers. Not available with PER, PER5, PER7, PIR or PIRH. Not available P1, P2, P3, P4 or P5.
- Requires (2) separately switched circuits.
- Reference Motion Sensor table on page 3.
- Reference PER table on page 3 to see functionality.
- Must be ordered with NLTAIR2. For more information on nLight Air 2 visit [this link](#).
- Not available with 347V, 480V, PNMT, DS. For PER5 or PER7, see PER Table on page 3. Requires isolated neutral.
- Not available with 347V, 480V, DS, BL30, BL50. For PER5 or PER7, see PER Table on page 3. Separate Dusk to Dawn required.
- Not available with other dimming controls options
- Not available with BLC, LCCO and RCCO distribution. Also available as a separate accessory; see Accessories information.
- Must be ordered with fixture for factory pre-drilling.
- Requires luminaire to be specified with PER, PER5 or PER7 option. See PER Table on page 3.
- For retrofit use only.

## External Glare Shield



## Drilling

### HANDHOLE ORIENTATION



### Tenon Mounting Slipfitter\*\*

Tenon O.D.	Single Unit	2 at 180°	2 at 90°	3 at 120°	3 at 90°	4 at 90°
2-3/8"	AST20-190	AST20-280	AST20-290	AST20-320	AST20-390	AST20-490
2-7/8"	AST25-190	AST25-280	AST25-290	AST25-320	AST25-390	AST25-490
4"	AST35-190	AST35-280	AST35-290	AST35-320	AST35-390	AST35-490

### Pole drilling nomenclature: # of heads at degree from handhole (default side A)

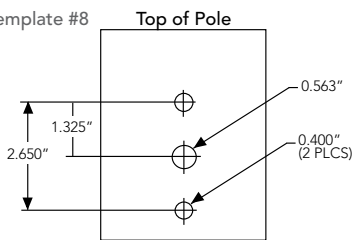
DM19AS	DM28AS	DM29AS	DM32AS	DM39AS	DM49AS
1 @ 90°	2 @ 280°	2 @ 90°	3 @ 120°	3 @ 90°	4 @ 90°
Side B	Side B & D	Side B & C	Round pole only	Side B, C, & D	Sides A, B, C, D

Note: Review luminaire spec sheet for specific nomenclature

Pole top or tenon O.D.	4.5" @ 90°	4" @ 90°	3.5" @ 90°	3" @ 90°	4.5" @ 120°	4" @ 120°	3.5" @ 120°	3" @ 120°
DSX SPA	Y	Y	Y	N	-	-	-	-
DSX RPA	Y	Y	N	N	Y	Y	Y	Y
DSX SPUMBA	Y	N	N	N	-	-	-	-
DSX RPUMBA	N	N	N	N	Y	Y	Y	N

\*3 fixtures @120 require round pole top/tenon.

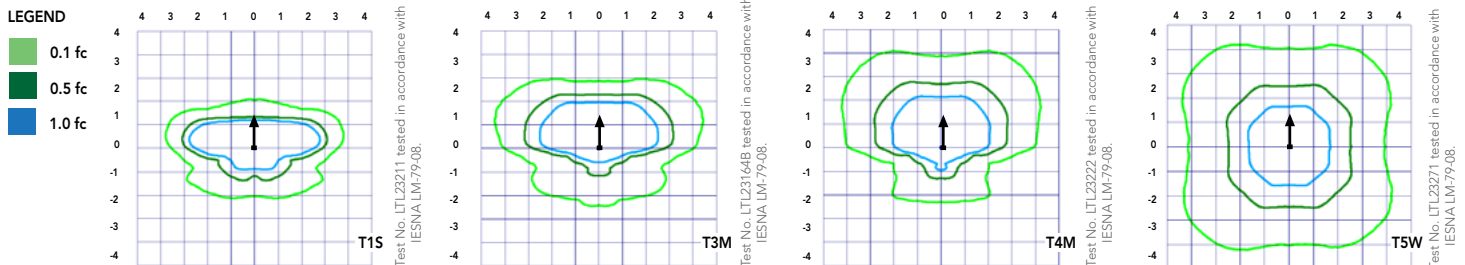
Template #8



## Photometric Diagrams

To see complete photometric reports or download .ies files for this product, visit Lithonia Lighting's [D-Series Area Size 1 homepage](#).

Isofootcandle plots for the DSX1 LED 60C 1000 40K. Distances are in units of mounting height (25').



## Performance Data

### Lumen Ambient Temperature (LAT) Multipliers

Use these factors to determine relative lumen output for average ambient temperatures from 0-40°C (32-104°F).

Ambient		Lumen Multiplier
0°C	32°F	1.04
5°C	41°F	1.04
10°C	50°F	1.03
15°C	59°F	1.02
20°C	68°F	1.01
<b>25°C</b>	<b>77°F</b>	<b>1.00</b>
30°C	86°F	0.99
35°C	95°F	0.98
40°C	104°F	0.97

### Projected LED Lumen Maintenance

Data references the extrapolated performance projections for the platforms noted in a **25°C ambient**, based on 10,000 hours of LED testing (tested per IESNA LM-80-08 and projected per IESNA TM-21-11).

To calculate LLF, use the lumen maintenance factor that corresponds to the desired number of operating hours below. For other lumen maintenance values, contact factory.

Operating Hours	0	25000	50000	100000
Lumen Maintenance Factor	1.00	0.96	0.92	0.85

### Electrical Load

	Performance Package	LED Count	Drive Current	Wattage	Current (A)					
					120	208	240	277	347	480
Forward Optics (Non-Rotated)	P1	30	530	54	0.45	0.26	0.23	0.19	0.10	0.12
	P2	30	700	70	0.59	0.34	0.30	0.25	0.20	0.16
	P3	30	1050	102	0.86	0.50	0.44	0.38	0.30	0.22
	P4	30	1250	125	1.06	0.60	0.52	0.46	0.37	0.27
	P5	30	1400	138	1.16	0.67	0.58	0.51	0.40	0.29
	P6	40	1250	163	1.36	0.78	0.68	0.59	0.47	0.34
	P7	40	1400	183	1.53	0.88	0.76	0.66	0.53	0.38
	P8	60	1050	207	1.74	0.98	0.87	0.76	0.64	0.49
	P9	60	1250	241	2.01	1.16	1.01	0.89	0.70	0.51
Rotated Optics (Requires L90 or R90)	P10	60	530	106	0.90	0.52	0.47	0.43	0.33	0.27
	P11	60	700	137	1.15	0.67	0.60	0.53	0.42	0.32
	P12	60	1050	207	1.74	0.99	0.87	0.76	0.60	0.46
	P13	60	1250	231	1.93	1.12	0.97	0.86	0.67	0.49

### Motion Sensor Default Settings

Option	Dimmed State	High Level (when triggered)	Photocell Operation	Dwell Time	Ramp-up Time	Ramp-down Time
PIR or PIRH	3V (37%) Output	10V (100%) Output	Enabled @ 5FC	5 min	3 sec	5 min
*PIR1FC3V or PIRH1FC3V	3V (37%) Output	10V (100%) Output	Enabled @ 1FC	5 min	3 sec	5 min

\*for use with Inline Dusk to Dawn or timer.

### PER Table

Control	PER (3 wire)	PER5 (5 wire)		PER7 (7 wire)		
			Wire 4/Wire5		Wire 4/Wire5	Wire 6/Wire7
Photocontrol Only (On/Off)	✓	▲	Wired to dimming leads on driver	▲	Wired to dimming leads on driver	Wires Capped inside fixture
ROAM	✗	✓	Wired to dimming leads on driver	▲	Wired to dimming leads on driver	Wires Capped inside fixture
ROAM with Motion (ROAM on/off only)	✗	▲	Wires Capped inside fixture	▲	Wires Capped inside fixture	Wires Capped inside fixture
Future-proof*	✗	▲	Wired to dimming leads on driver	✓	Wired to dimming leads on driver	Wires Capped inside fixture
Future-proof* with Motion	✗	▲	Wires Capped inside fixture	✓	Wires Capped inside fixture	Wires Capped inside fixture

✓ Recommended
✗ Will not work
▲ Alternate

\*Future-proof means: Ability to change controls in the future.







---

## FEATURES & SPECIFICATIONS

### INTENDED USE

The sleek design of the D-Series Size 1 reflects the embedded high performance LED technology. It is ideal for many commercial and municipal applications, such as parking lots, plazas, campuses, and streetscapes.

### CONSTRUCTION

Single-piece die-cast aluminum housing has integral heat sink fins to optimize thermal management through conductive and convective cooling. Modular design allows for ease of maintenance and future light engine upgrades. The LED drivers are mounted in direct contact with the casting to promote low operating temperature and long life. Housing is completely sealed against moisture and environmental contaminants (IP65). Low EPA (1.01 ft<sup>2</sup>) for optimized pole wind loading.

### FINISH

Exterior parts are protected by a zinc-infused Super Durable TGIC thermoset powder coat finish that provides superior resistance to corrosion and weathering. A tightly controlled multi-stage process ensures a minimum 3 mils thickness for a finish that can withstand extreme climate changes without cracking or peeling. Available in both textured and non-textured finishes.

### OPTICS

Precision-molded proprietary acrylic lenses are engineered for superior area lighting distribution, uniformity, and pole spacing. Light engines are available in standard 3000 K, 4000 K and 5000 K (70 CRI) configurations. The D-Series Size 1 has zero uplight and qualifies as a Nighttime Friendly™ product, meaning it is consistent with the LEED® and Green Globes™ criteria for eliminating wasteful uplight.

### ELECTRICAL

Light engine configurations consist of high-efficacy LEDs mounted to metal-core circuit boards to maximize heat dissipation and promote long life (up to L85/100,000 hours at 25°C). Class 1

electronic drivers are designed to have a power factor >90%, THD <20%, and an expected life of 100,000 hours with <1% failure rate. Easily serviceable 10kV surge protection device meets a minimum Category C Low operation (per ANSI/IEEE C62.41.2).

### INSTALLATION

Included mounting block and integral arm facilitate quick and easy installation. Stainless steel bolts fasten the mounting block securely to poles and walls, enabling the D-Series Size 1 to withstand up to a 3.0 G vibration load rating per ANSI C136.31. The D-Series Size 1 utilizes the AERIS™ series pole drilling pattern (template #8). Optional terminal block and NEMA photocontrol receptacle are also available.

### LISTINGS

UL Listed for wet locations. Light engines are IP66 rated; luminaire is IP65 rated. Rated for -40°C minimum ambient. U.S. Patent No. D672,492 S. International patent pending.

DesignLights Consortium® (DLC) Premium qualified product and DLC qualified product. Not all versions of this product may be DLC Premium qualified or DLC qualified. Please check the DLC Qualified Products List at [www.designlights.org/QPL](http://www.designlights.org/QPL) to confirm which versions are qualified.

International Dark-Sky Association (IDA) Fixture Seal of Approval (FSA) is available for all products on this page utilizing 3000K color temperature only.

### WARRANTY

5-year limited warranty. Complete warranty terms located at: [www.acuitybrands.com/CustomerResources/Terms\\_and\\_conditions.aspx](http://www.acuitybrands.com/CustomerResources/Terms_and_conditions.aspx)

**Note:** Actual performance may differ as a result of end-user environment and application. All values are design or typical values, measured under laboratory conditions at 25 °C. Specifications subject to change without notice.



## LIGHT FIXTURE SCHEDULE

TYPE	DESCRIPTION	MANUFACTURER	REFERENCE CATALOG #	LAMPS	WATTS	VOLTS	NOTES
A	13"W X 8"H x 33"D AREA FIXTURE, 30 LED ENGINE, 530mA DRIVE CURRENT, 4000K CCT, TYPE II SHORT DISTRIBUTION, HOUSE-SIDE SHIELD, ROUND POLE MOUNTING OPTION, NATURAL ALUMINUM FINISH	LITHONIA	DSX1 LED P1 40K T2S MVOLT RPA HS	LED 6,900 LUMENS	54	MVOLT	1
B	13"W X 8"H x 33"D AREA FIXTURE, 30 LED ENGINE, 530mA DRIVE CURRENT, 4000K CCT, TYPE II MEDIUM DISTRIBUTION, HOUSE-SIDE SHIELD, ROUND POLE MOUNTING OPTION, NATURAL ALUMINUM FINISH	LITHONIA	DSX1 LED P1 40K T2M MVOLT RPA HS	LED 6,900 LUMENS	54	MVOLT	1
C	13"W X 8"H x 33"D AREA FIXTURE, 30 LED ENGINE, 700mA DRIVE CURRENT, 4000K CCT, TYPE III MEDIUM DISTRIBUTION, HOUSE-SIDE SHIELD, ROUND POLE MOUNTING OPTION, NATURAL ALUMINUM FINISH	LITHONIA	DSX1 LED P2 40K T3M MVOLT RPA HS	LED 8,900 LUMENS	70	MVOLT	1
D	13"W X 8"H x 33"D AREA FIXTURE, 30 LED ENGINE, 530mA DRIVE CURRENT, 4000K CCT, TYPE IV MEDIUM DISTRIBUTION, HOUSE-SIDE SHIELD, ROUND POLE MOUNTING OPTION, NATURAL ALUMINUM FINISH	LITHONIA	DSX1 LED P1 40K T4M MVOLT RPA HS	LED 6,800 LUMENS	54	MVOLT	1
E	13"W X 8"H x 33"D AREA FIXTURE, 30 LED ENGINE, 530mA DRIVE CURRENT, 4000K CCT, TYPE V MEDIUM DISTRIBUTION, HOUSE-SIDE SHIELD, ROUND POLE MOUNTING OPTION, NATURAL ALUMINUM FINISH	LITHONIA	DSX1 LED P1 40K T5M MVOLT RPA HS	LED 7,200 LUMENS	54	MVOLT	1
F	13"W X 8"H x 33"D AREA FIXTURE, 30 LED ENGINE, 530mA DRIVE CURRENT, 4000K CCT, FORWARD THROW MEDIUM DISTRIBUTION, HOUSE-SIDE SHIELD, ROUND POLE MOUNTING OPTION, NATURAL ALUMINUM FINISH	LITHONIA	DSX1 LED P1 40K TFTM MVOLT RPA HS	LED 6,900 LUMENS	54	MVOLT	1

**NOTES:**

1. FIXTURE SHALL BE MOUNTED ON A 27'-0" TALL, ROUND TAPERED, ANODIZED ALUMINUM (WITH OPTIONAL POWDER COAT FINISH) CONTINUOUS POLE WITH HAND HOLE AND VIBRATION DAMPENERS. POLE SHALL BE MOUNTED TO A 24" DIAMETER, 30" HIGH EXTENDED POLE BASE WITH SQUARE METAL BASE. ENTIRE ASSEMBLY SHALL BE CAPABLE OF WITHSTANDING 100 MILE PER HOUR VELOCITY. FIXTURE MOUNTING HEIGHT SHALL NOT EXCEED 30'-0" ABOVE FINISHED GRADE.