

# CERTIFIED SURVEY MAP NO.

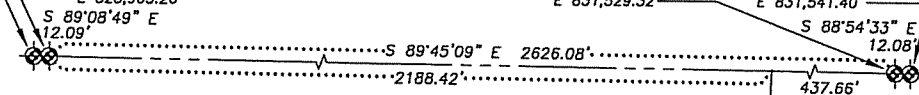
PART OF LOTS 1, 2 AND 3 AND ALL OF LOTS 4 THROUGH 11, BLOCK 4, WAKELEY'S SUBDIVISION, LOCATED IN THE NORTHEAST QUARTER (NE 1/4) OF THE SOUTHEAST QUARTER (SE 1/4) OF SECTION SIX (6), TOWN SEVEN NORTH (T7N), RANGE TEN EAST (R10E), IN THE CITY OF MADISON, DANE COUNTY, WISCONSIN

SOUTH 1/4 CORNER,  
SECTION 31, T8N, R10E,  
BRASS CAP IN  
CONCRETE MONUMENT  
FOUND  
N 494,549.42  
E 828,891.17

NORTH 1/4 CORNER,  
SECTION 6, T7N, R10E,  
BRASS CAP IN  
CONCRETE MONUMENT  
FOUND  
N 494,549.24  
E 828,903.26

SOUTHEAST CORNER,  
SECTION 31, T8N, R10E,  
BRASS CAP IN  
CONCRETE MONUMENT  
FOUND  
N 494,537.89  
E 831,529.32

NORTHEAST CORNER,  
SECTION 6, T7N, R10E,  
BRASS CAP IN  
CONCRETE MONUMENT  
FOUND  
N 494,537.66  
E 831,541.40

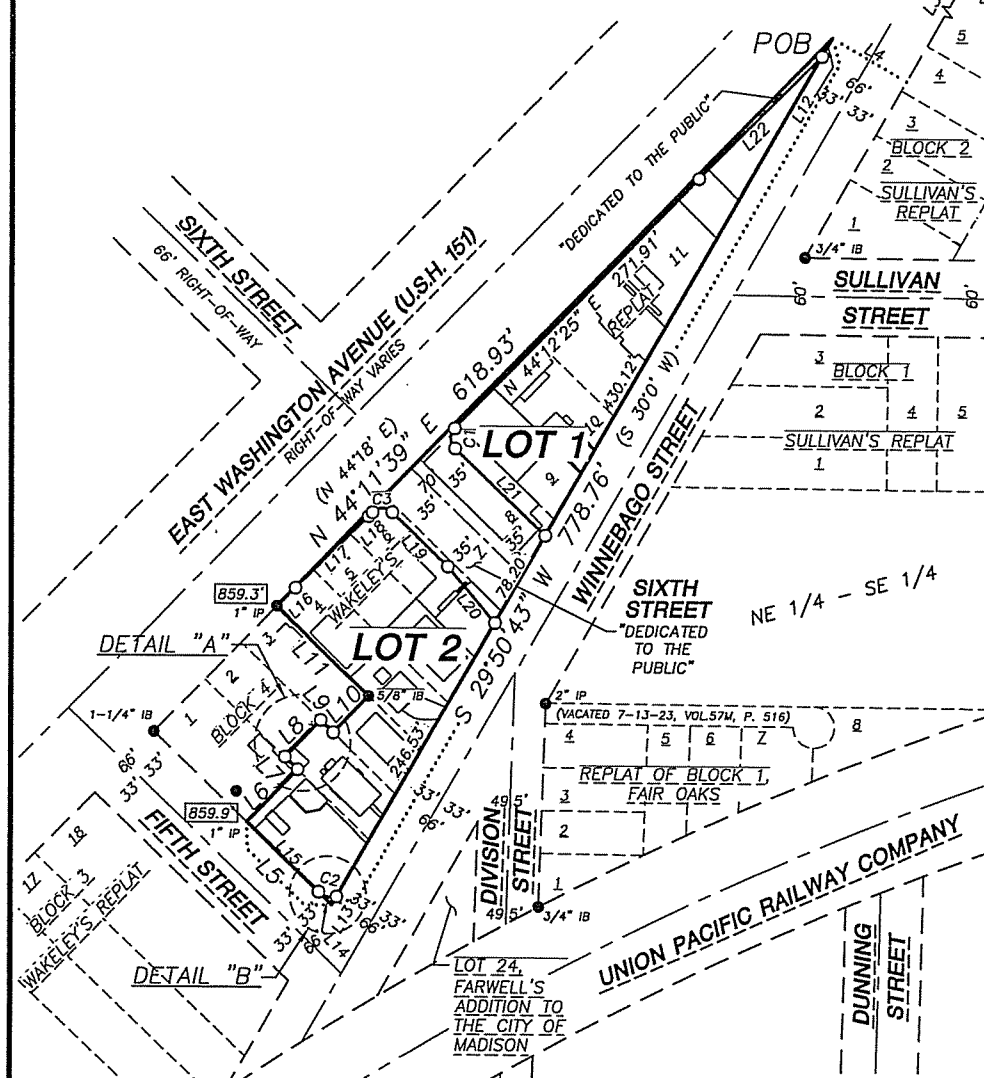


### LEGEND

- SECTION CORNER
- IRON STAKE FOUND, AS NOTED
- PK NAIL FOUND
- 3/4" X 24" REBAR SET
- MAG NAIL SET IN CONCRETE
- BUILDINGS
- PROPERTY LINE
- PLATTED LINE
- SECTION LINE
- EASEMENT LINE
- FENCE
- ELEVATION AT LOT CORNER
- PREVIOUSLY RECORDED INFORMATION

### NOTES

1. BEARINGS ARE BASED ON THE WISCONSIN COUNTY COORDINATE SYSTEM, DANE COUNTY ZONE.
2. BOUNDARY SURVEY PERFORMED BY JENKINS SURVEY & DESIGN, INC. OCTOBER 9, 2006.
3. ELEVATIONS ARE BASED ON NORTH AMERICAN VERTICAL DATUM OF 1988 (NAVD 88). BENCHMARK IS 3/4" REBAR MARKING THE MEANDER CORNER FOR THE WEST 1/4 OF SECTION 5, T7N, R10E, PUBLISHED ELEVATION = 862.467'.
4. SEE SHEETS 1 AND 2 FOR INTERIOR LOT CURVE AND LINE TABLES AND LOT DETAILS.
5. EXCEPT FOR SOME UTILITY FACILITIES TO BE DETERMINED, ALL EXISTING IMPROVEMENTS CONTAINED WITHIN THE BOUNDARY OF THIS CERTIFIED SURVEY MAP ARE TO BE REMOVED OR RELOCATED.
6. PER THE CITY OF MADISON: "IN THE EVENT OF A CITY OF MADISON PLAN COMMISSION AND/OR COMMON COUNCIL APPROVED REDIVISION OF A PREVIOUSLY SUBDIVIDED PROPERTY, THE UNDERLYING PUBLIC EASEMENTS FOR DRAINAGE PURPOSES ARE RELEASED AND REPLACED BY THOSE REQUIRED AND CREATED BY THE CURRENT APPROVED SUBDIVISION".
7. PER CITY OF MADISON: "ALL LOTS WITHIN THIS CERTIFIED SURVEY SHALL HAVE DRAINAGE PLANS REVIEWED ON AN INDIVIDUAL BASIS AS PART OF THE BUILDING PERMIT PROCESS. NO BUILDING PERMITS SHALL BE ISSUED PRIOR TO THIS APPROVAL."



LINE	BEARING	LENGTH
L1	S 02°01'24" W	2490.62'
L2	N 88°21'21" W	383.10'
L3	S 29°56'08" W (S 29°21' W)	377.97'
L4	N 60°03'52" W	66.70'
L5	N 46°14'25" W (N 45°42' W)	92.39' (93.0')
L6	N 43°57'44" E (N 44°18' E)	56.80' (57.0')
L7	N 46°07'28" W	13.88'
L8	N 44°11'39" E	40.01'
L9	S 45°59'07" E	13.72'
L10	N 43°57'44" E	39.78'
L11	N 45°59'04" W	100.06'
L12	S 29°50'43" W (S 30°0' W)	16.57'
L13	S 29°50'43" W (S 30°0' W)	7.34'
L14	N 46°14'25" W (N 45°42' W)	14.53'

LINE	BEARING	LENGTH
L15	N 46°14'25" W	77.86'
L16	N 45°11'28" E	20.14'
L17	N 45°38'26" E	79.82'
L18	N 44°12'25" E	4.33'
L19	S 46°20'53" E	59.97'
L20	S 40°22'35" E	57.11'
L21	N 46°20'53" W	97.32'
L22	N 44°53'55" E	134.83'

LOT NO.	LOT AREA	
	SQ.FT.	ACRES
1	22,826	0.524
2	27,018	0.620

CURVE	LENGTH	RADIUS	DELTA	TANGENT	CHORD	CHORD BEARING
C1	17.17'	11.00'	89°27'03"	10.90'	15.48'	N 01°04'15" W
C2	15.27'	15.00'	58°19'57"	8.37'	14.62'	N 75°24'23" W

