

Map 6:
Future Land Use and
Street Plan

High Point - Raymond
Neighborhood Development Plan
Update
August 2017

City of Madison Planning Division

- High Point-Raymond Planning Area
- City of Madison Boundary
- Existing Building Footprints
- Right of Way
- Unimproved Right of Way
- Residential Housing Mix 1 (Avg 6 du/ac)
- Housing Mix 2 (Avg 12 du/ac)
- Housing Mix 3 (Avg 20 du/ac)
- Housing Mix 4 (Avg 35 du/ac)
- Commercial and Mixed Use Neighborhood Mixed Use
- Potential Mixed Use
- Employment - Office
- Park and Open Spaces Park
- Other open space





Mid Town Road

Dewberry Drive

Legacy Lane

High Point Road

Marly Road

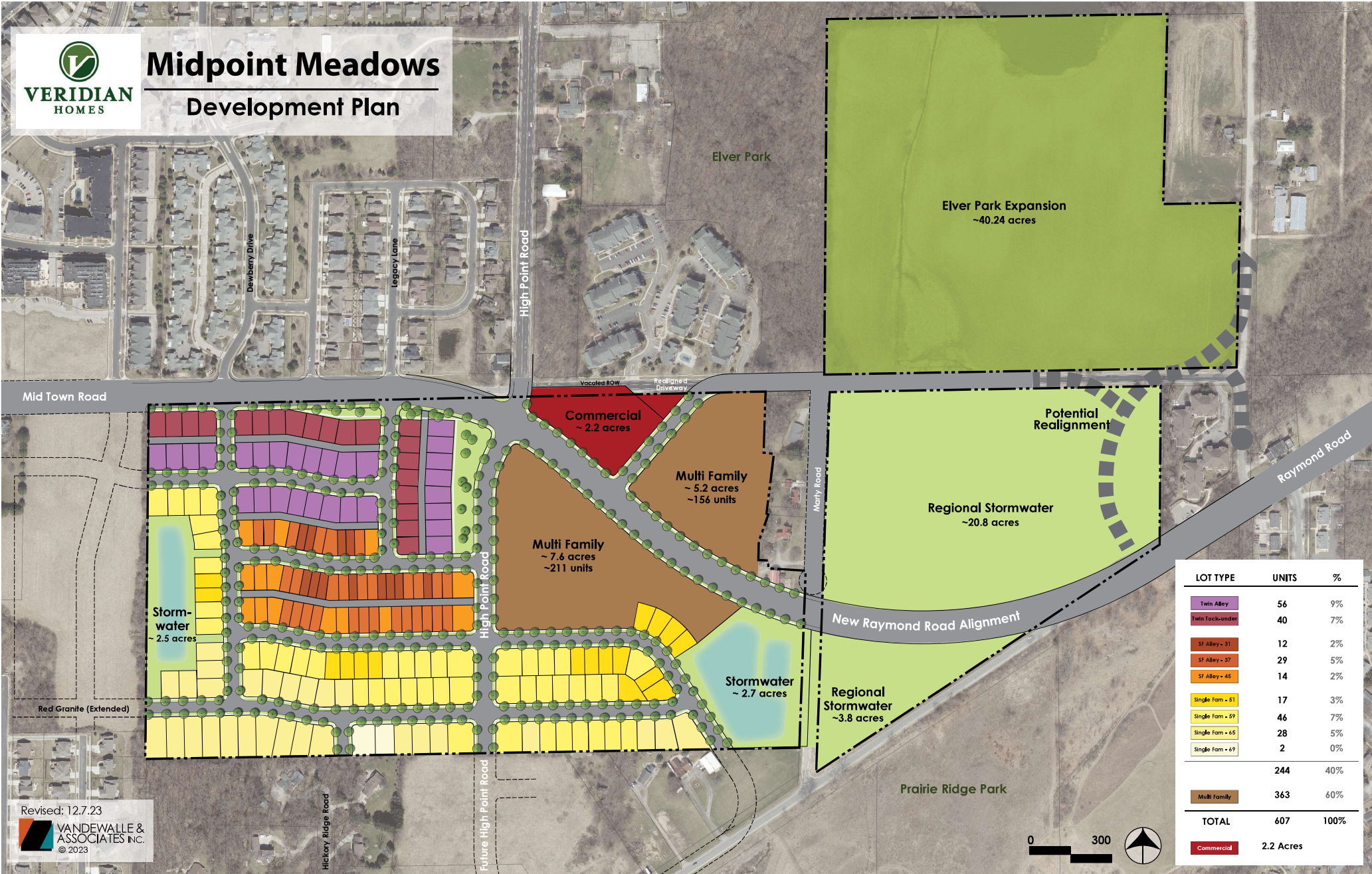
Raymond Road

Hickory Ridge Road



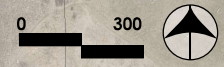
Midpoint Meadows

Development Plan



LOT TYPE	UNITS	%
Twin Alley	56	9%
Twin Tuck-under	40	7%
SF Alley - 31	12	2%
SF Alley - 37	29	5%
SF Alley - 45	14	2%
Single Fam - 51	17	3%
Single Fam - 59	46	7%
Single Fam - 65	28	5%
Single Fam - 69	2	0%
	244	40%
Multi Family	363	60%
TOTAL	607	100%
Commercial	2.2 Acres	

Revised: 12.7.23
 VANDEWALLE & ASSOCIATES INC.
 © 2023





Midpoint Meadows

Zoning District Overlay

Elver Park

Existing AG

Elver Park Expansion
~40.24 acres

Mid Town Road

CC-T

Multi Family
~ 5.2 acres
~154 units

Potential
Realignment

Regional Stormwater
~20.8 acres

Existing AG

TR-P

Multi Family
~ 7.6 acres
~211 units

New Raymond Road Alignment

Stormwater
~2.5 acres

Stormwater
~ 2.7 acres

Regional Stormwater
~3.8 acres

Prairie Ridge Park

LOT TYPE	UNITS	%
TR-P	56	9%
CC-T	40	7%
TR-P	12	2%
ST-Alley - 35	29	5%
ST-Alley - 45	14	2%
Single Fam - 51	17	3%
Single Fam - 49	46	7%
Single Fam - 65	28	5%
Single Fam - 49	2	0%
	244	40%
Multi Family	363	60%
TOTAL	607	100%
Commercial	2.2 Acres	

Revised: 12.7.23

