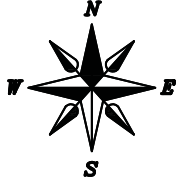


EXHIBIT A

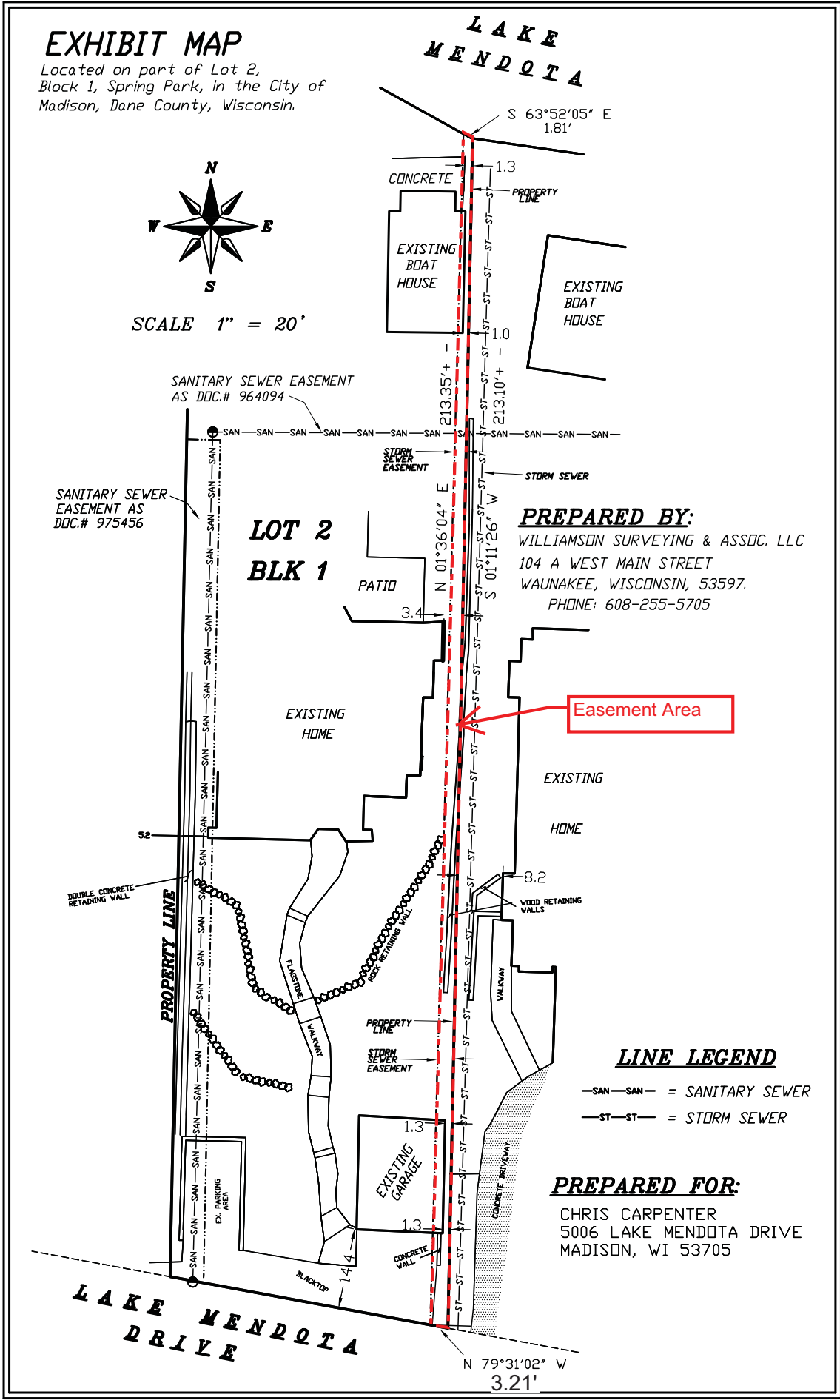
Permanent Public Storm Sewer and Consent to Occupy Easement

EXHIBIT MAP

Located on part of Lot 2,
Block 1, Spring Park, in the City of
Madison, Dane County, Wisconsin.



SCALE 1" = 20'



PREPARED BY:
WILLIAMSON SURVEYING & ASSOC. LLC
104 A WEST MAIN STREET
WAUNAKEE, WISCONSIN, 53597.
PHONE: 608-255-5705

Easement Area

LINE LEGEND

- SAN-SAN- = SANITARY SEWER
- ST-ST- = STORM SEWER

PREPARED FOR:
CHRIS CARPENTER
5006 LAKE MENDOTA DRIVE
MADISON, WI 53705