

**APPLICATION FOR
URBAN DESIGN COMMISSION
REVIEW AND APPROVAL**

AGENDA ITEM # _____
Project # _____

DATE SUBMITTED: February 28, 2007	Action Requested
UDC MEETING DATE: March 7, 2007	<input type="checkbox"/> Informational Presentation
	<input checked="" type="checkbox"/> Initial Approval and/or Recommendation
	<input checked="" type="checkbox"/> Final Approval and/or Recommendation

PROJECT ADDRESS: 4000 International Lane

ALDERMANIC DISTRICT: 17

OWNER/DEVELOPER (Partners and/or Principals) ARCHITECT/DESIGNER/OR AGENT:
 Dane County Regional Airport Graef, Anhalt, Schloemer & Associates, Inc.
 4000 International Lane Eppstein Uhen Architects, Inc.
 Madison, Wisconsin 53704

CONTACT PERSON: Jonathan Parker, Eppstein Uhen Architects, Inc.
 Address: 222 West Washington Avenue, Suite 650
 Madison, Wisconsin 53703
 Phone: (608) 442-5350
 Fax: (608) 442-6680
 E-mail address: jonathanp@eua.com

TYPE OF PROJECT:

(See Section A for:)

- Planned Unit Development (PUD)
 - General Development Plan (GDP)
 - Specific Implementation Plan (SIP)
- Planned Community Development (PCD)
 - General Development Plan (GDP)
 - Specific Implementation Plan (SIP)
- Planned Residential Development (PRD)
- New Construction or Exterior Remodeling in an Urban Design District * (A public hearing is required as well as a fee)
- School, Public Building or Space (Fee may be required)
- New Construction or Addition to or Remodeling of a Retail, Hotel or Motel Building Exceeding 40,000 Sq. Ft.
- Planned Commercial Site

(See Section B for:)

- New Construction or Exterior Remodeling in C4 District (Fee required)

(See Section C for:)

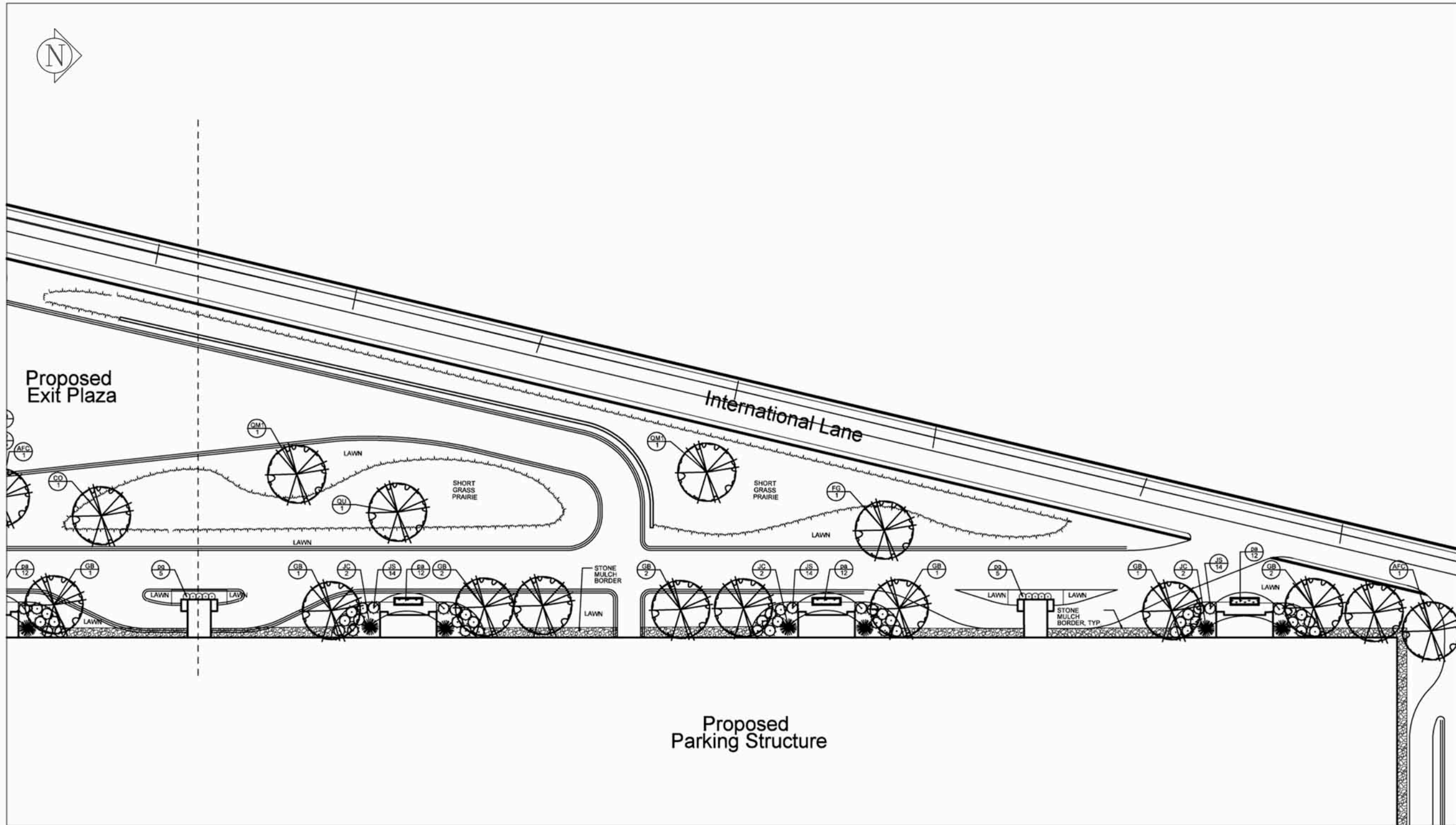
- R.P.S.M. Parking Variance (Fee required)

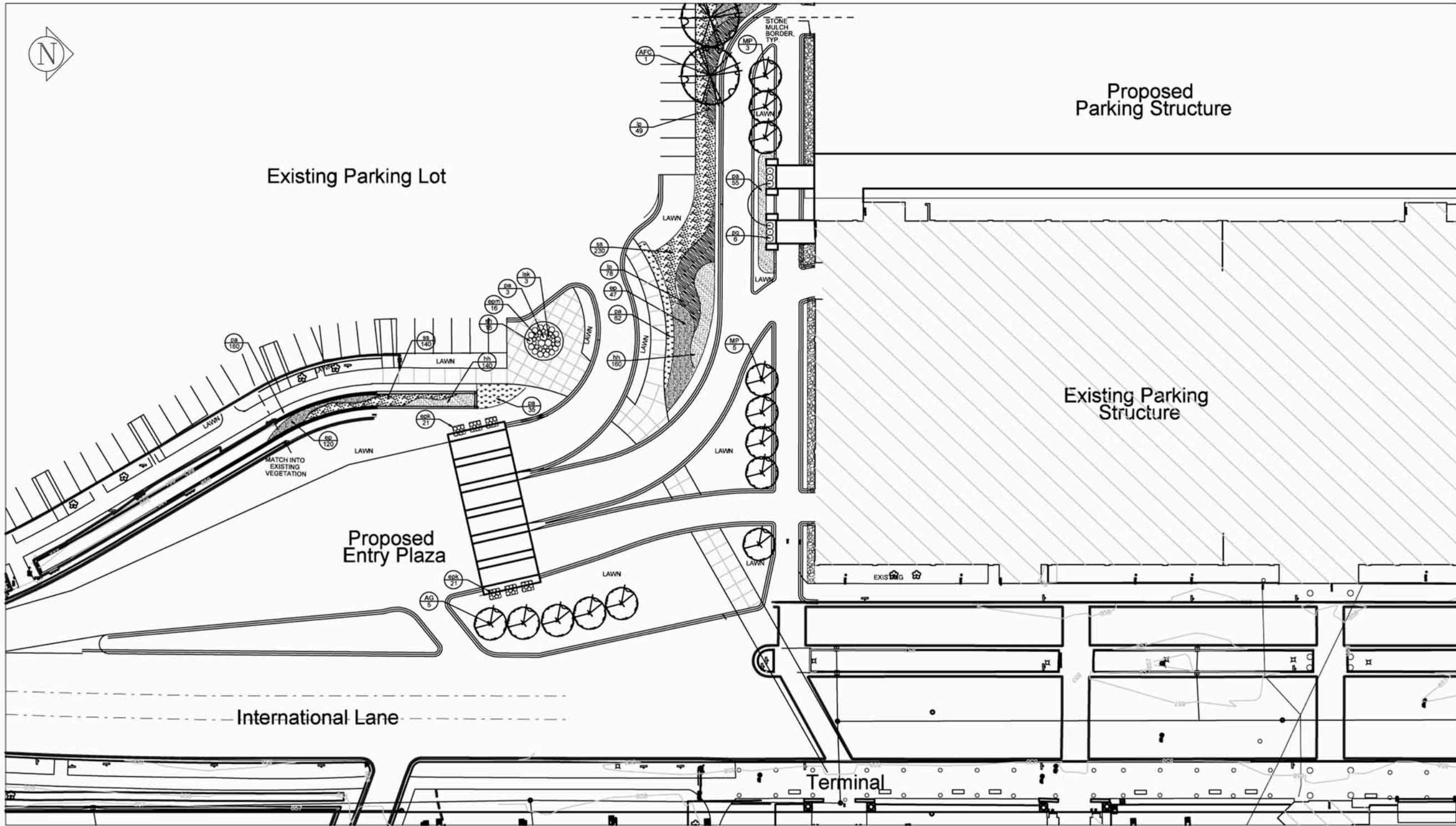
(See Section D for:)

- Comprehensive Design Review* (Fee required)
- Street Graphics Variance* (Fee required)
- Other _____

*Public Hearing Required (Submission Deadline 3 Weeks in Advance of Meeting Date)

Where fees are required (as noted above) they apply with the first submittal for either initial or final approval of a project.

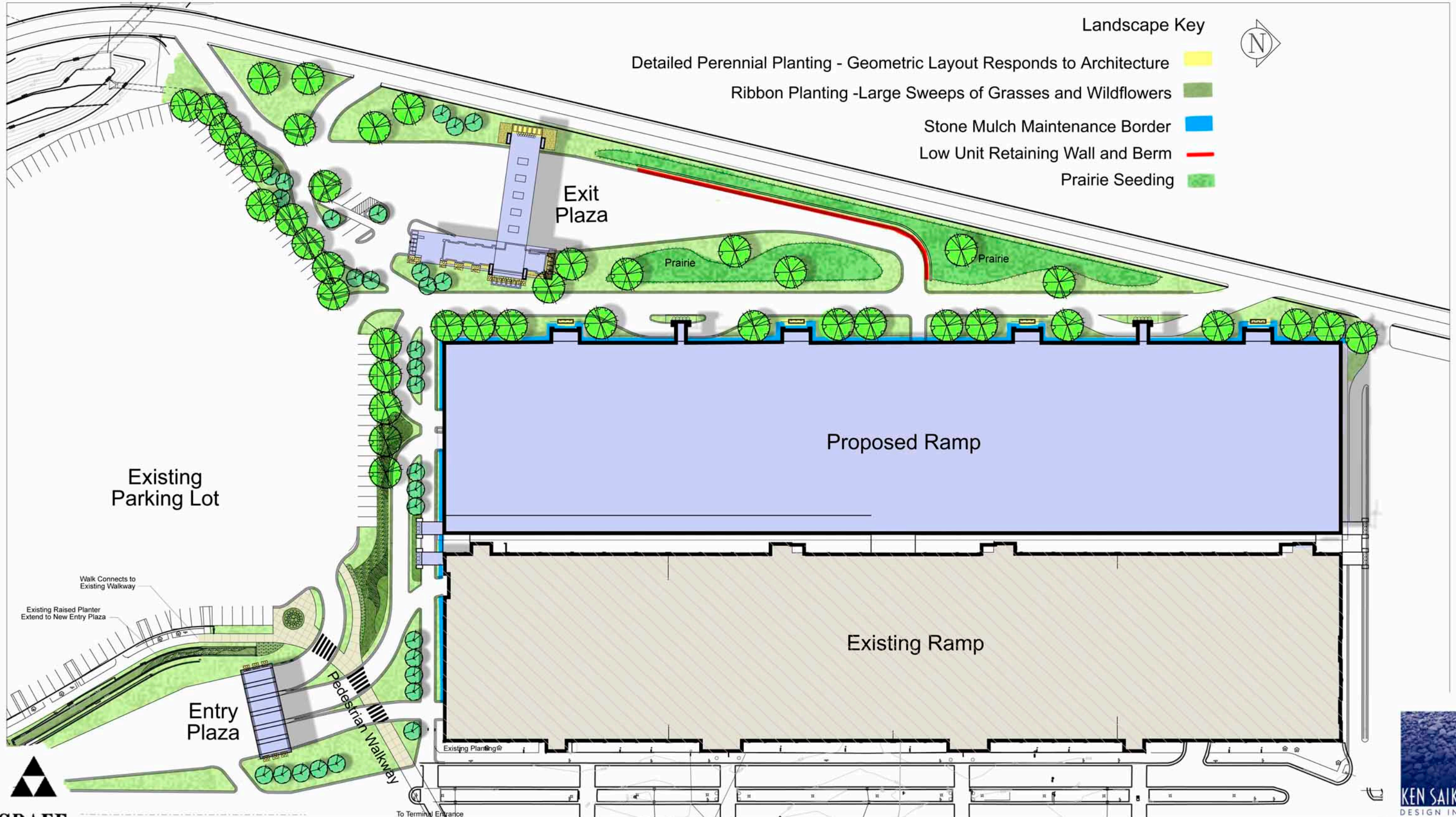




Plant List					
Key	Botanical Name	Common Name	Quantity	Size	Spec
Deciduous Trees					
AFC	<i>Acer x freemanii</i> 'Celzam'	Celebration Maple		2-1/2" Cal.	B&B
AS	<i>Acer saccharum</i> 'Morton'	Crescendo Maple		2-1/2" Cal.	B&B
FG	<i>Fagus grandifolia</i>	American Beech		2-1/2" Cal.	B&B
CO	<i>Carya ovata</i>	Shagbark Hickory		2-1/2" Cal.	B&B
GB	<i>Ginkgo biloba</i> 'Autumn Gold'	Autumn Gold Ginkgo		2-1/2" Cal.	B&B
QM1	<i>Quercus macrocarpa</i>	Bur Oak - large specimen		2-1/2" Cal.	B&B
QM2	<i>Quercus macrocarpa</i>	Bur Oak		2-1/2" Cal.	B&B
QU	<i>Quercus muehlenbergii</i>	Chinkapin Oak		2-1/2" Cal.	B&B
Ornamental Trees					
MP	<i>Malus</i> 'Prairiefire'	Crabapple		1-3/4" Cal.	B&B
AG	<i>Acer ginnala</i> 'Red Wing'	Shadblow Serviceberry		1-3/4" Cal.	B&B
CC	<i>Crataegus crus-galli</i>	/cockspur Hawthorn		1-3/4" Cal.	B&B
Evergreen Trees					
JC	<i>Juniperus chinensis</i> 'Wintergreen'	Wintergreen Juniper			#3 Cont.
Evergreen Shrubs					
JS	<i>Juniperus chinensis</i> 'Seagreen'	Seagreen Juniper			#3 Cont.
Perennials/Grasses/Groundcovers					
aff	<i>Athyrium filix-femina</i>	Lady Fern			#2 Cont.
ep	<i>Echinacea purpurea</i> 'Magnus'	Magnus Coneflower			#2 Cont.
epk	<i>Echinacea purpurea</i> 'Kim's Knee High'	Kim's Knee High Purple Coneflower			#2 Cont.
epm	<i>Echinacea purpurea</i> 'Kim's Mophead'	Kim's Mophead Coneflower			#2 Cont.
hbb	<i>Hemerocallis</i> 'Border Baby'	Border Baby Daylily			#2 Cont.
hh	<i>Hemerocallis</i> 'Happy Returns'	Happy Returns Daylily			#2 Cont.
hmm	<i>Hemerocallis</i> 'May May'	May May Daylily			#2 Cont.
hsb	<i>Helictotrichon sempervirens</i> 'Blue Sapphire'	Blue Sapphire Oat Grass			#2 Cont.
lp	<i>Liatis pycnostachya</i>	Prairie Blazing Star			#2 Cont.
lsk	<i>Liatis spicata</i>	Gayfeather			#2 Cont.
pa	<i>Pennisetum alopecuroides</i> 'Hamelin'	Fountain Grass			#2 Cont.
pal	<i>Perovskia atriplicifolia</i> 'Little Spire'	Little Spire Russian Sage			#2 Cont.
pq	<i>Parthenocissus quinquefolia</i>	Virginia Creeper			#2 Cont.
sh	<i>Sporobolus heterolepis</i>	Prairie Dropseed			#2 Cont.
ss	<i>Schizachyrium scoparium</i>	Little Bluestem			#2 Cont.
vsb	<i>Veronica</i> 'Sunny Border Blue'	Sunny Border Blue Speedwell			#2 Cont.

Dane County Regional Airport - Plant List

Madison, WI



Landscape Key

Detailed Perennial Planting - Geometric Layout Responds to Architecture

Ribbon Planting - Large Sweeps of Grasses and Wildflowers

Stone Mulch Maintenance Border

Low Unit Retaining Wall and Berm

Prairie Seeding

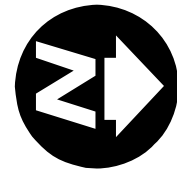


Dane County Regional Airport - Landscape Design

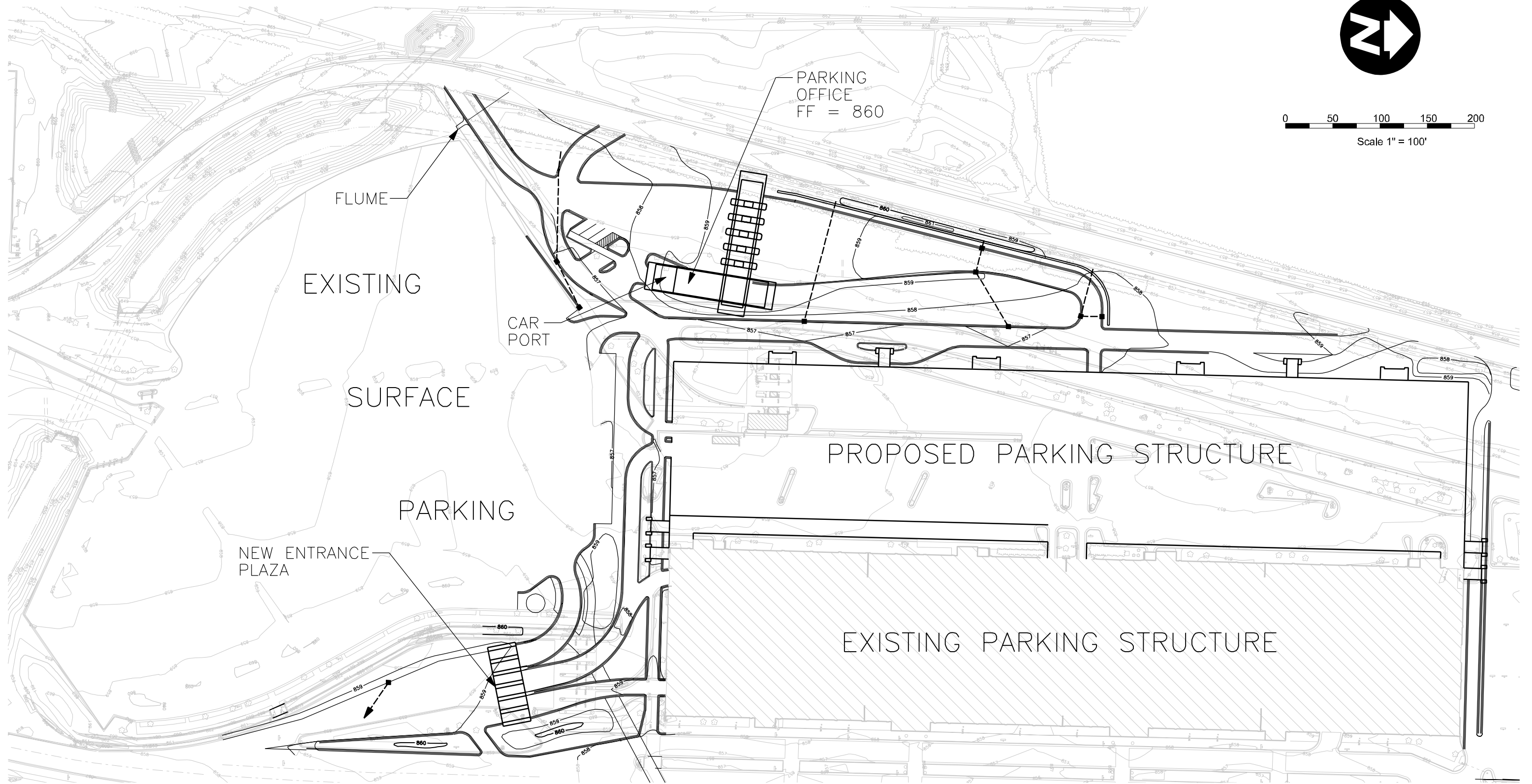
Madison, WI

**GRAEF
ANHALT
SCHLOEMER**
and Associates Inc.

KEN SAIKI
DESIGN INC
LANDSCAPE
ARCHITECTS
303 S. PATERSON
SUITE ONE
MADISON, WI 53703
Phone: 608 951-3600
Fax: 608 951-9330
www.ksd-la.com

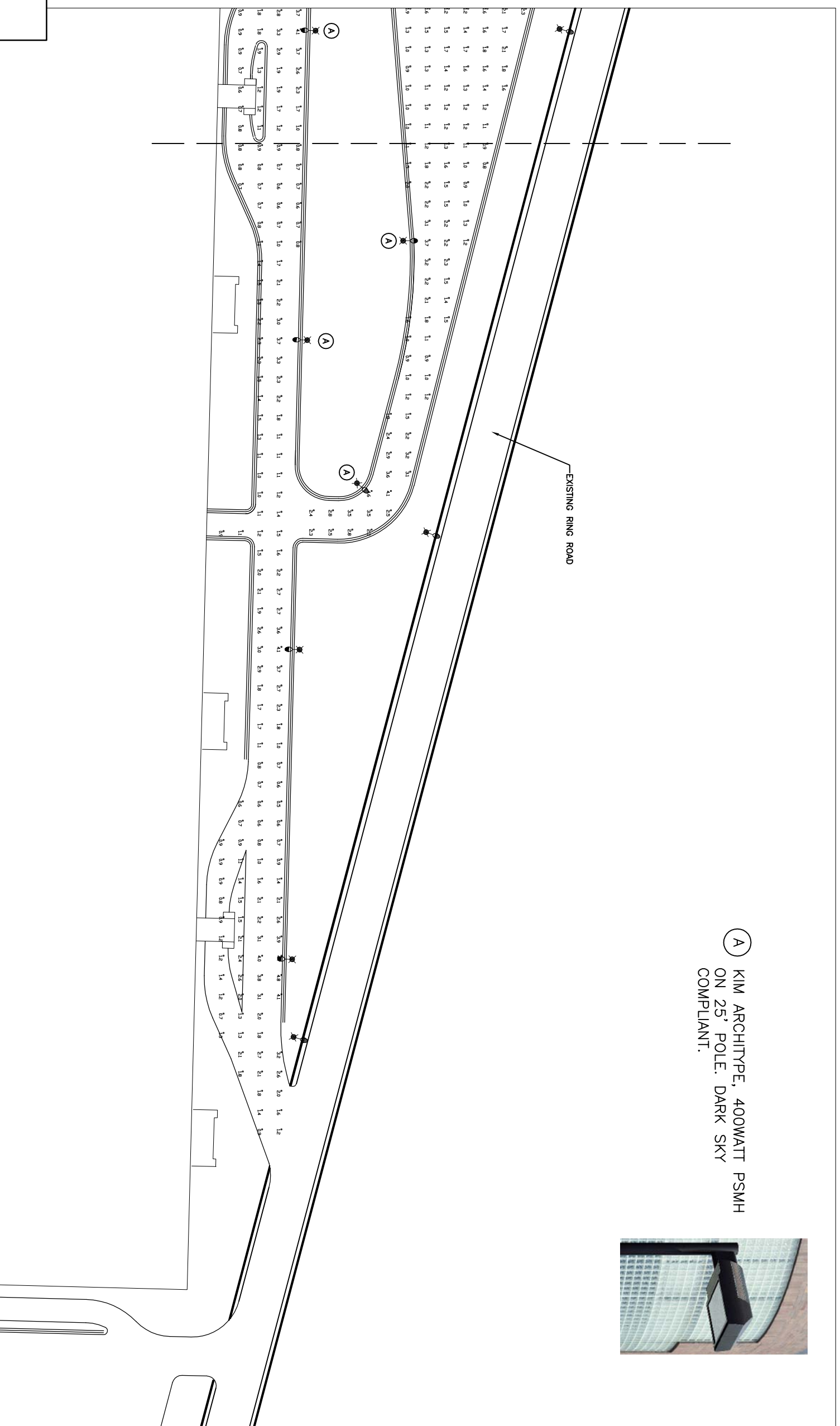


0 50 100 150 200
Scale 1" = 100'

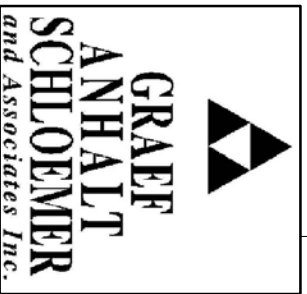




Ⓐ KIM ARCHTYPE, 400WATT PSMH
ON 25' POLE. DARK SKY
COMPLIANT.



EXISTING RING ROAD



Dane County Regional Airport - Exit Plaza

Madison, WI

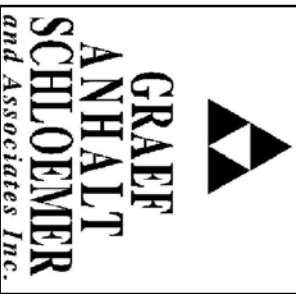
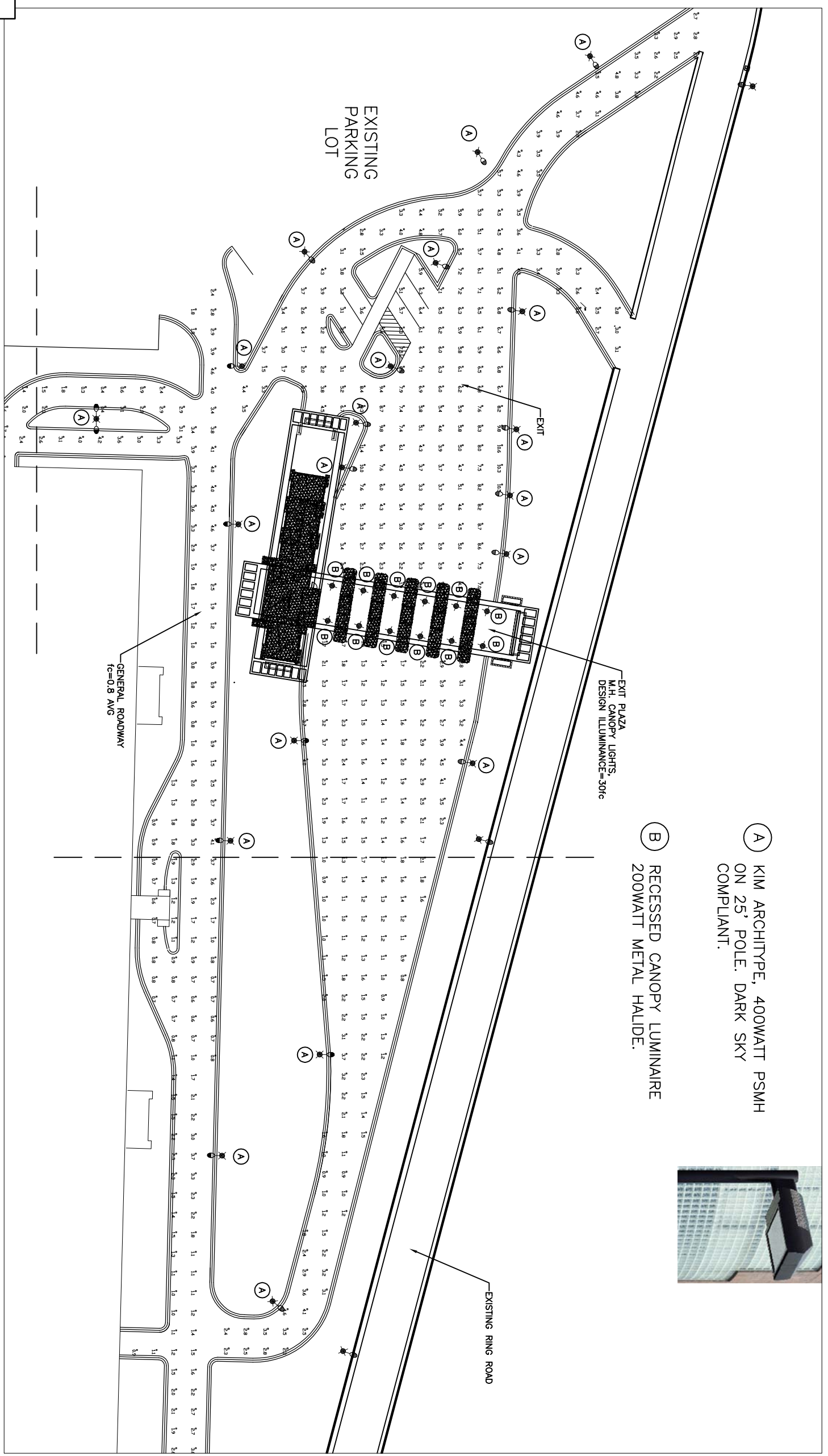




(A) KIM ARCHITYPE, 400WATT PSMH
ON 25' POLE. DARK SKY
COMPLIANT.

(B) RECESSED CANOPY LUMINAIRE
200WATT METAL HALIDE.

EXIT PLAZA
M.H. CANOPY LIGHTS,
DESIGN ILLUMINANCE=30fc



Dane County Regional Airport - Exit Plaza

Madison, WI



epstein uhlen : architects

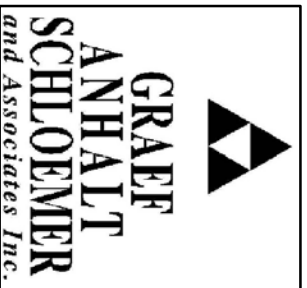
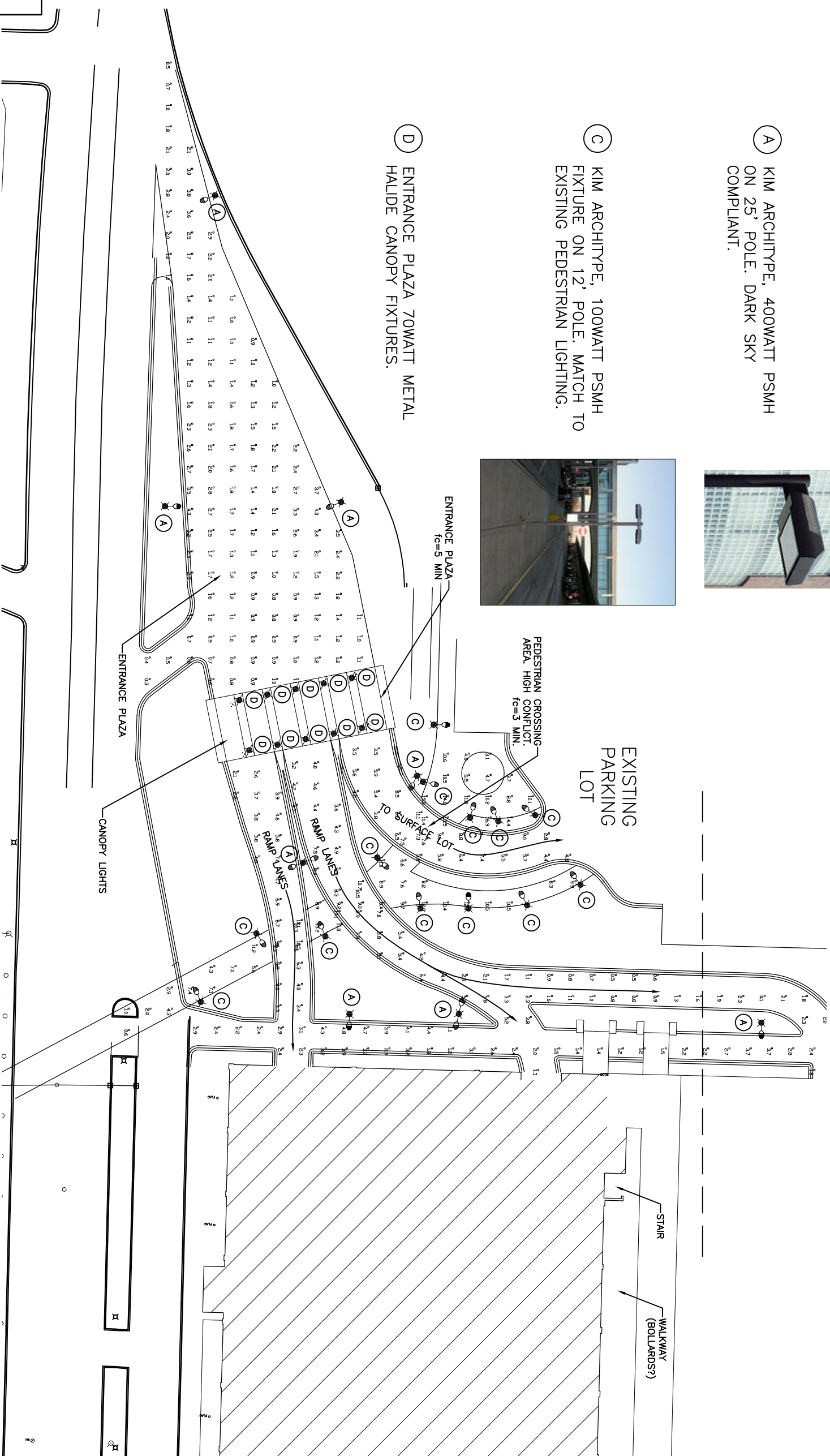


- A KIM ARCHITYPE, 400WATT PSMH ON 25' POLE. DARK SKY COMPLIANT.



- C KIM ARCHITYPE, 100WATT PSMH FIXTURE ON 12' POLE. MATCH TO EXISTING PEDESTRIAN LIGHTING.

- D ENTRANCE PLAZA 70WATT METAL HALIDE CANOPY FIXTURES.



Dane County Regional Airport - Exit Plaza

Madison, WI





February 28, 2007

City of Madison
Department of Planning & Development
215 Martin Luther King Jr. Boulevard
Room LL100
Madison, Wisconsin 53703

RE: Dane County Regional Airport Parking Structure Expansion and New Exit Plaza
4000 International Lane

Dear Urban Design Commission:

Presented for Initial and Final Approval, this project consists of an expansion of the existing Parking Ramp and replacement of the existing Exit Plaza at the Dane County Regional Airport. The design intent is to substantially match the recently completed Airport Terminal Building. The proposed Exit Plaza emphasizes the horizontal and is primarily brick and glass. The column and spandrel elements on the Parking Garage will be constructed of Precast concrete which will match the existing Parking Garage. The Stair Towers and Snow Chutes on the Parking Garage will be a combination of Brick and Precast matching the Exit plaza and the Parking Garage. Signage for managing vehicular movement will be provided to match existing traffic control signage. Signage to manage exit and entry lanes will be programmable LED panels integrated into the building architecture.

The Landscape Design continues the existing emphasis on a natural appearing prairie. Using native plant species and composition the landscape will require little or no maintenance or irrigation. The recently completed re-configuration of the airport ring road has made accommodation for storm water management on site. The ring road project was completed with the diligent input of the State of Wisconsin Department of Natural Resources. Site lighting design concept and fixture selections are based on existing design and fixtures at the airport terminal area. The proposed project continues to work with the existing site design with an emphasis on pedestrian way finding and safety. These issues are accommodated by re-configuring the pedestrian path from the south parking lots to the terminal and providing additional space between the vehicle entry plaza and the pedestrian walkway.

Sincerely,

Jonathan Parker, AIA
Principal



PRECAST CONCRETE
PANELS

PRECAST CONCRETE
COLUMNS

Dane County Regional Airport - Parking Structure

EXISTING VISUAL CONTEXT



PARKING STRUCTURE

TERMINAL

MATERIALS KEY:

- 1 BRICK MASONRY TYPE #1
- 2 BRICK MASONRY TYPE #2
- 3 ARCHITECTURAL PRECAST CONCRETE- LIMESTONE FINISH
- 4 COMPOSITE ALUMINUM PANEL SYSTEM
- 5 ALUMINUM STOREFRONT GLAZING SYSTEM- CLEAR ANODIZED FINISH
- 6 EXTERIOR PLANTER- BRICK MASONRY TYPE #1
- 7 COPPER PIPE FINIAL
- 8 PRE-MANUFACTURED BOOTH, PAINTED TO MATCH BRICK TYPE #1
- 9 ALUMINUM DOOR- CLEAR ANODIZE FINISH TO MATCH STORFRONT GLAZING SYSTEM



Dane County Regional Airport - Parking Structure

EXISTING VISUAL CONTEXT

Dane County Regional Airport

International Drive



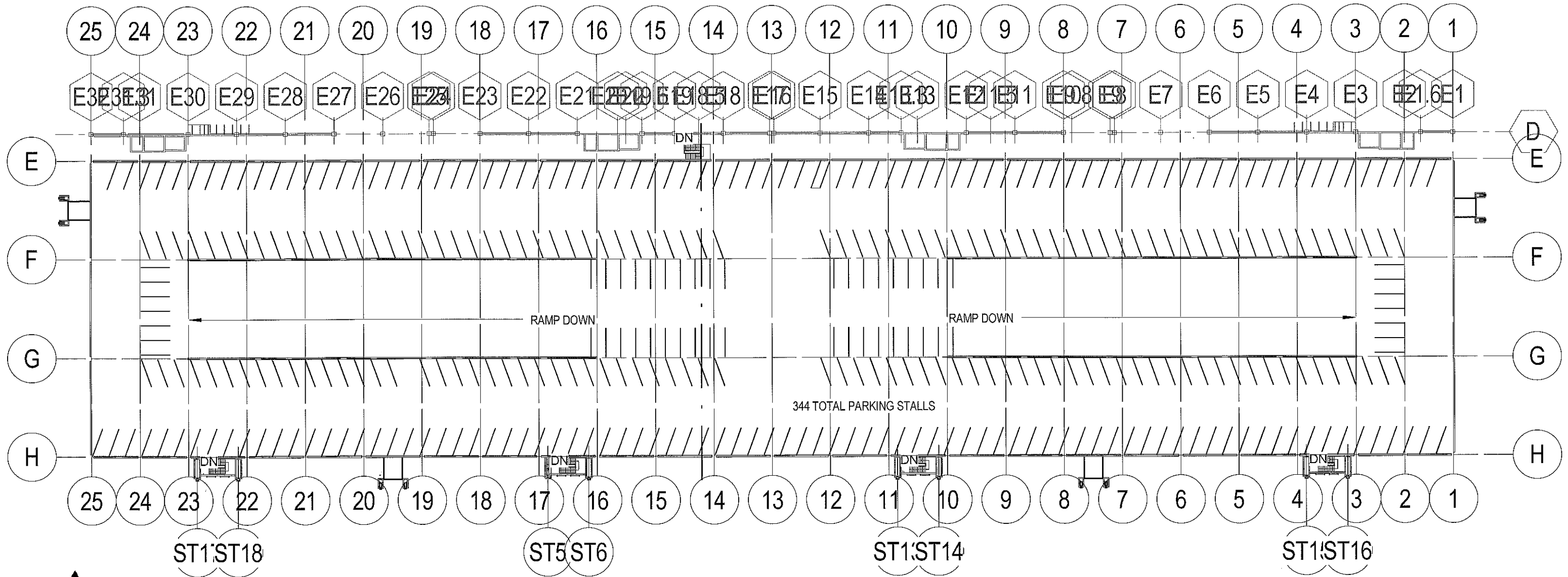
epstein uhen : architects



GRAEF
ANHALT
SCHLOEMER
and Associates Inc.

Urban Design Committee Submittal





Dane County Regional Airport - Parking Structure

UDC THIRD FLOOR PKNG - 1"=60'-0"



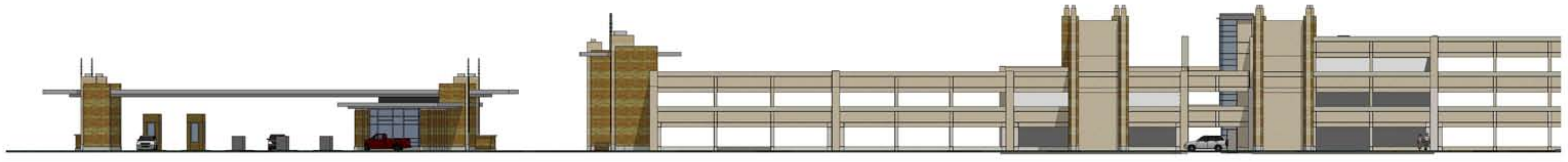
epstein uhen : architects

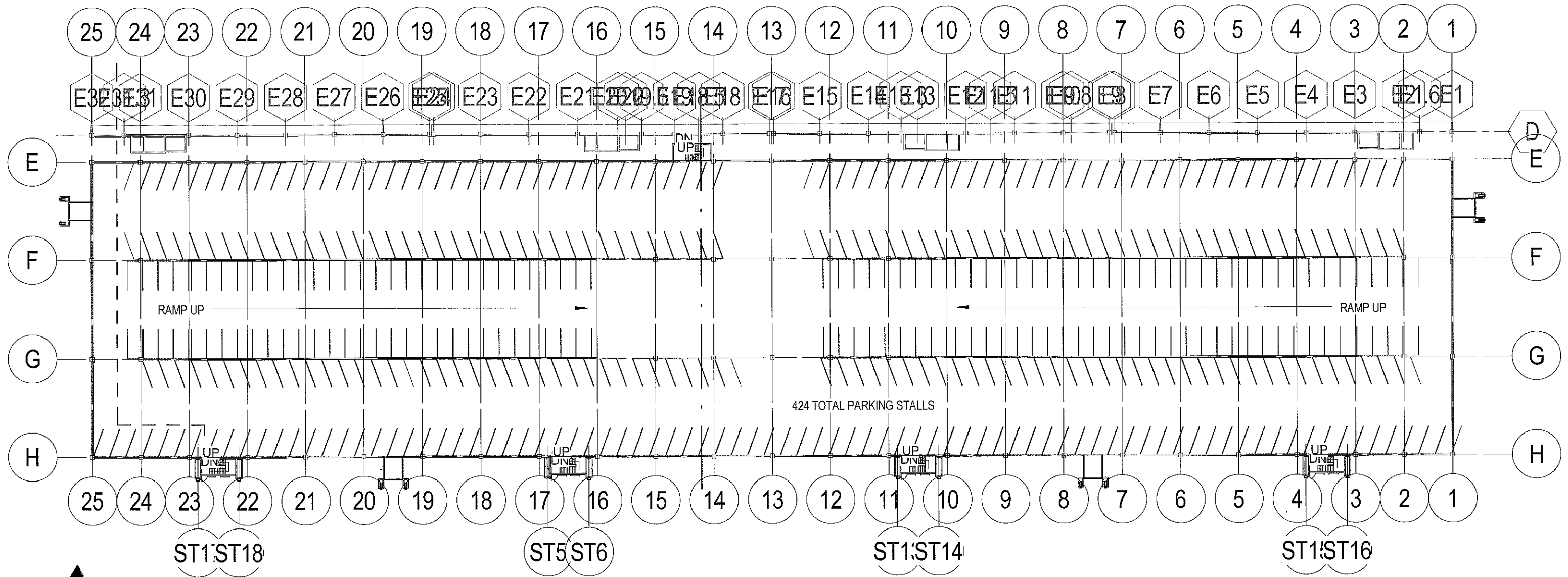
02/28/07

06009-01

© Epstein Uhen Architects, Inc.







Dane County Regional Airport - Parking Structure

UDC SECOND FLOOR PKNG - 1"=60'-0"



epstein uhen : architects

02/28/07

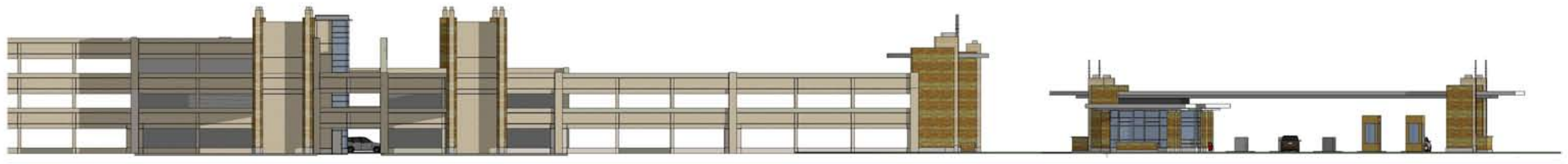
06009-01

© Epstein Uhen Architects, Inc.



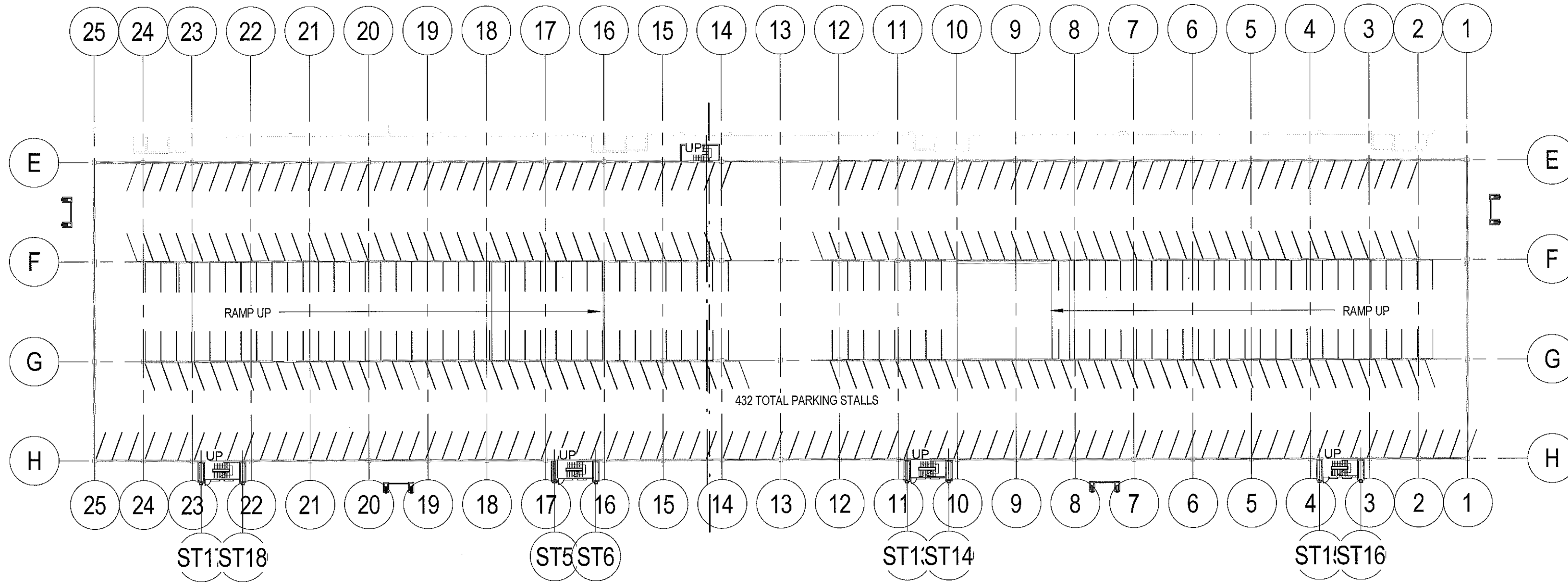
Dane County Regional Airport - Parking Structure

NORTHWEST PERSPECTIVE



Dane County Regional Airport - Parking Structure

NORTH ELEVATION



FIRST FLOOR: 432 STALLS
SECOND FLOOR: 424 TOTAL
THIRD FLOOR: 344 TOTAL
TOTAL: 1,200 PARKING STALLS



Dane County Regional Airport - Parking Structure

UDC FIRST FLOOR PKNG - 1"=60'-0"



epstein uhen : architects

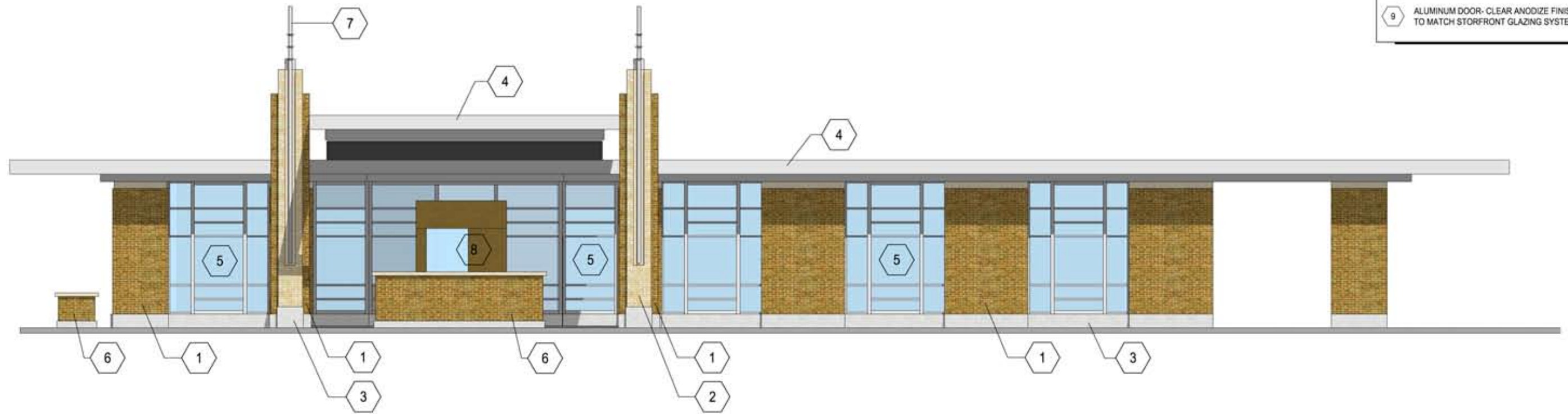
02/28/07

06009-01

© Epstein Uhen Architects, Inc.

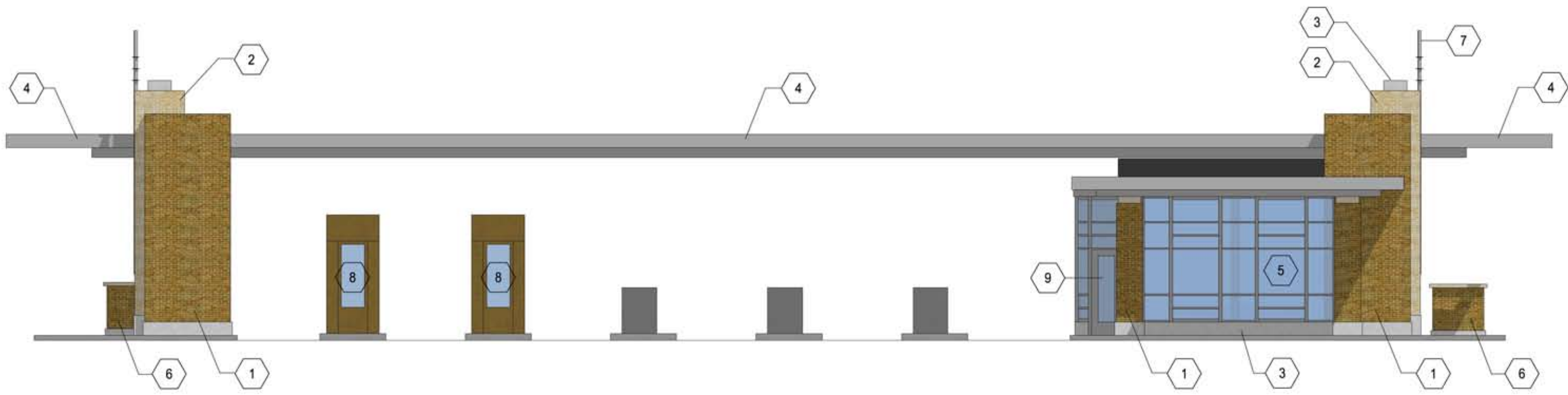
MATERIALS KEY:

- 1 BRICK MASONRY TYPE #1
- 2 BRICK MASONRY TYPE #2
- 3 ARCHITECTURAL PRECAST CONCRETE- LIMESTONE FINISH
- 4 COMPOSITE ALUMINUM PANEL SYSTEM
- 5 ALUMINUM STOREFRONT GLAZING SYSTEM- CLEAR ANODIZED FINISH
- 6 EXTERIOR PLANTER- BRICK MASONRY TYPE #1
- 7 COPPER PIPE FINIAL
- 8 PRE-MANUFACTURED BOOTH. PAINTED TO MATCH BRICK TYPE #1
- 9 ALUMINUM DOOR- CLEAR ANODIZE FINISH TO MATCH STORFRONT GLAZING SYSTEM



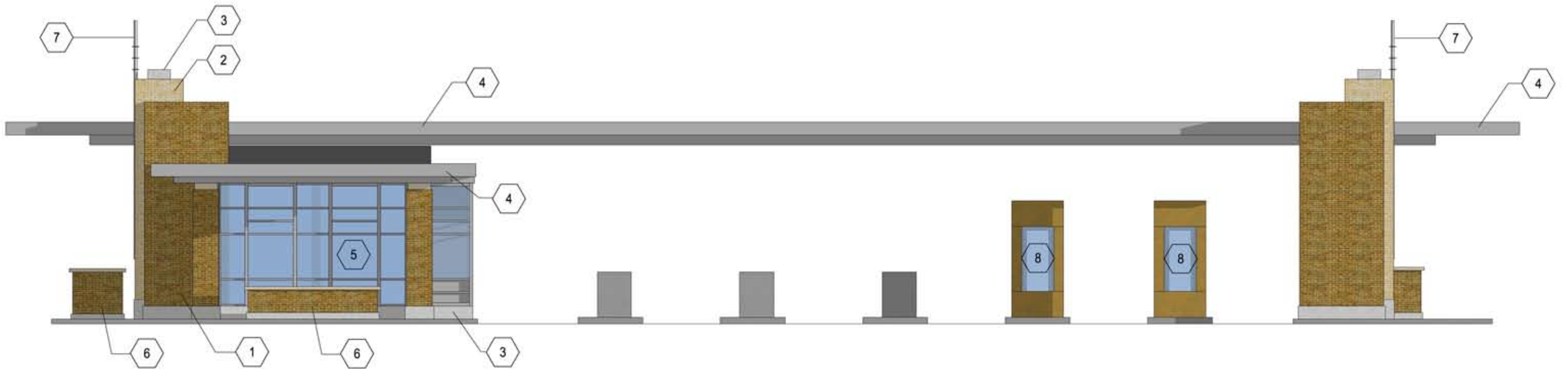
MATERIALS KEY:

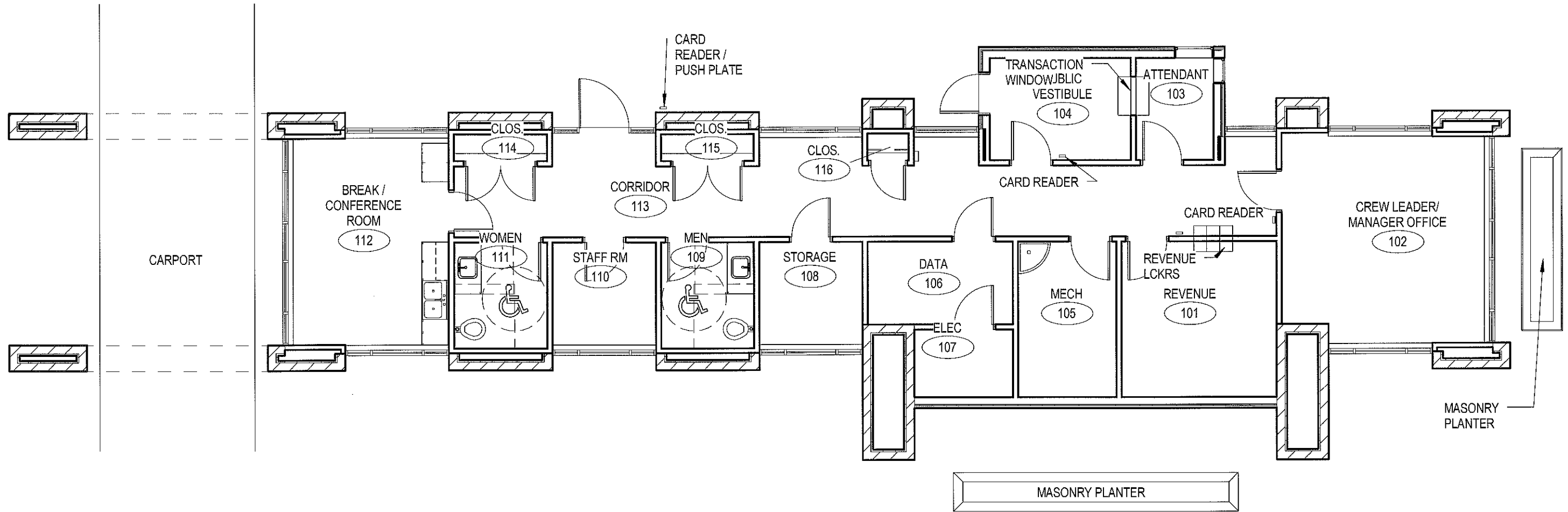
1	BRICK MASONRY TYPE #1
2	BRICK MASONRY TYPE #2
3	ARCHITECTURAL PRECAST CONCRETE- LIMESTONE FINISH
4	COMPOSITE ALUMINUM PANEL SYSTEM
5	ALUMINUM STOREFRONT GLAZING SYSTEM- CLEAR ANODIZED FINISH
6	EXTERIOR PLANTER- BRICK MASONRY TYPE #1
7	COPPER PIPE FINIAL
8	PRE-MANUFACTURED BOOTH, PAINTED TO MATCH BRICK TYPE #1
9	ALUMINUM DOOR- CLEAR ANODIZE FINISH TO MATCH STORFRONT GLAZING SYSTEM



MATERIALS KEY:

- 1 BRICK MASONRY TYPE #1
- 2 BRICK MASONRY TYPE #2
- 3 ARCHITECTURAL PRECAST CONCRETE- LIMESTONE FINISH
- 4 COMPOSITE ALUMINUM PANEL SYSTEM
- 5 ALUMINUM STOREFRONT GLAZING SYSTEM- CLEAR ANODIZED FINISH
- 6 EXTERIOR PLANTER- BRICK MASONRY TYPE #1
- 7 COPPER PIPE FINIAL
- 8 PRE-MANUFACTURED BOOTH. PAINTED TO MATCH BRICK TYPE #1
- 9 ALUMINUM DOOR- CLEAR ANODIZE FINISH TO MATCH STORFRONT GLAZING SYSTEM





MATERIALS KEY:

1	BRICK MASONRY TYPE #1
2	BRICK MASONRY TYPE #2
3	ARCHITECTURAL PRECAST CONCRETE- LIMESTONE FINISH
4	COMPOSITE ALUMINUM PANEL SYSTEM
5	ALUMINUM STOREFRONT GLAZING SYSTEM- CLEAR ANODIZED FINISH
6	EXTERIOR PLANTER- BRICK MASONRY TYPE #1
7	COPPER PIPE FINIAL
8	PRE-MANUFACTURED BOOTH. PAINTED TO MATCH BRICK TYPE #1
9	ALUMINUM DOOR- CLEAR ANODIZE FINISH TO MATCH STORFRONT GLAZING SYSTEM

