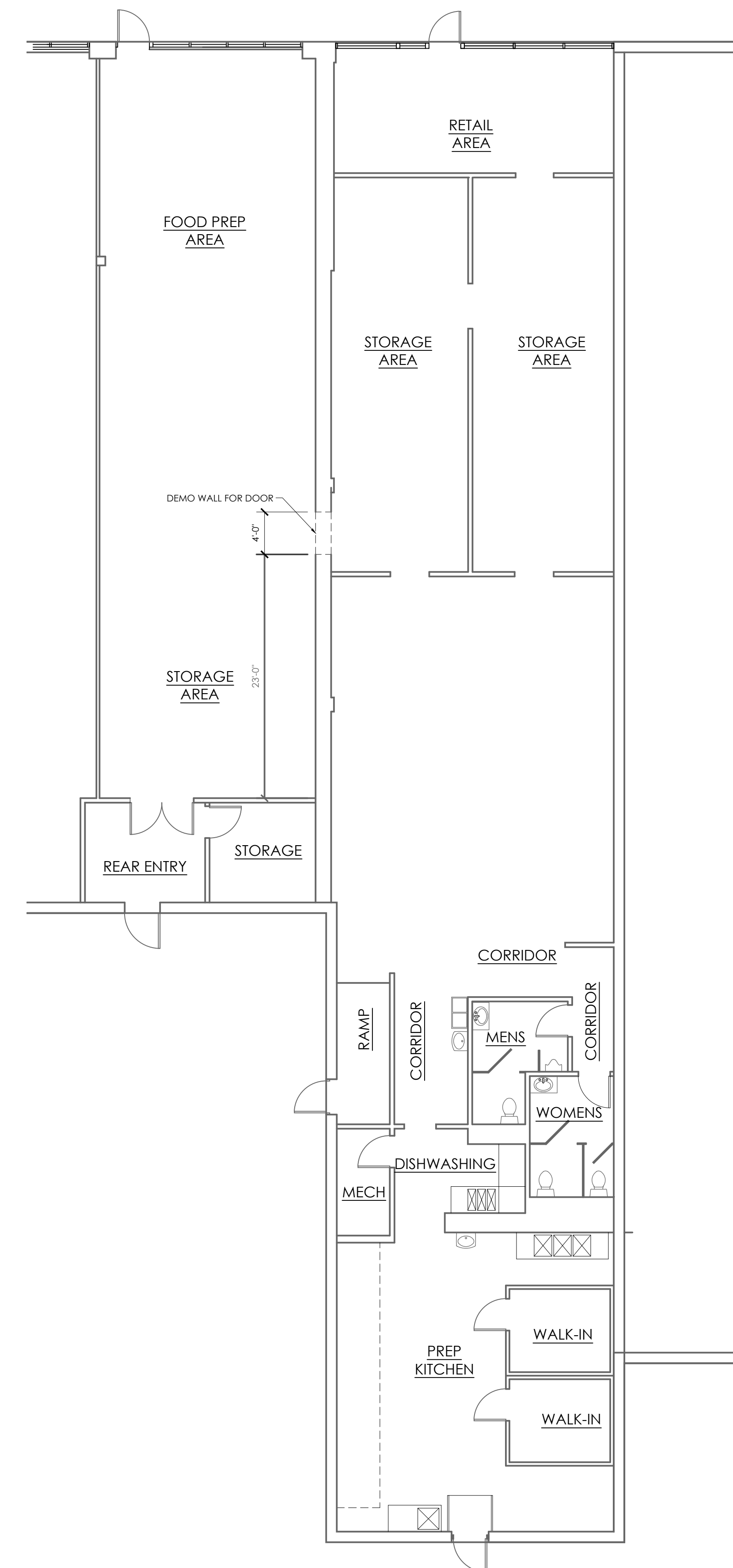
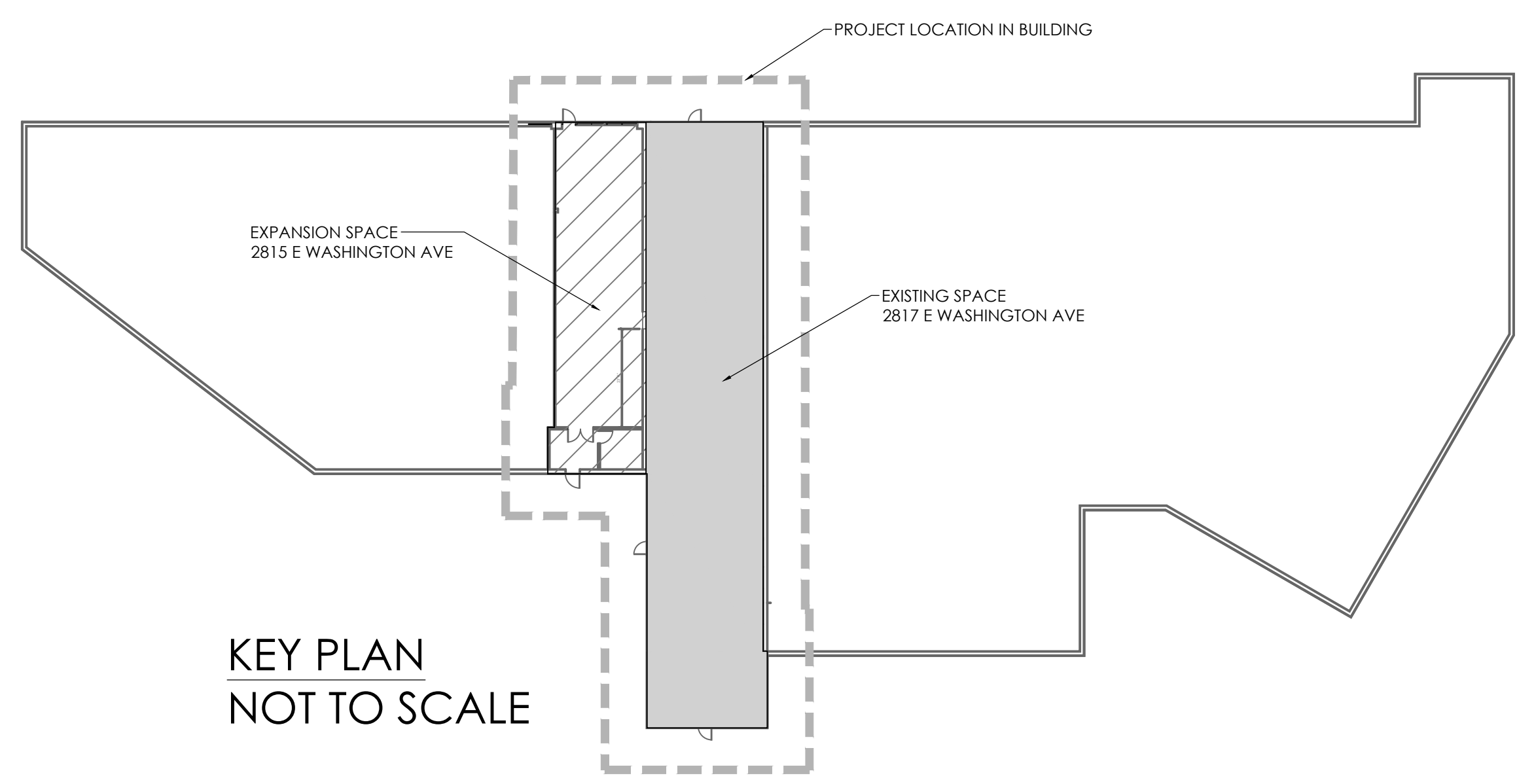


2 FLOOR PLAN NOT TO SCALE

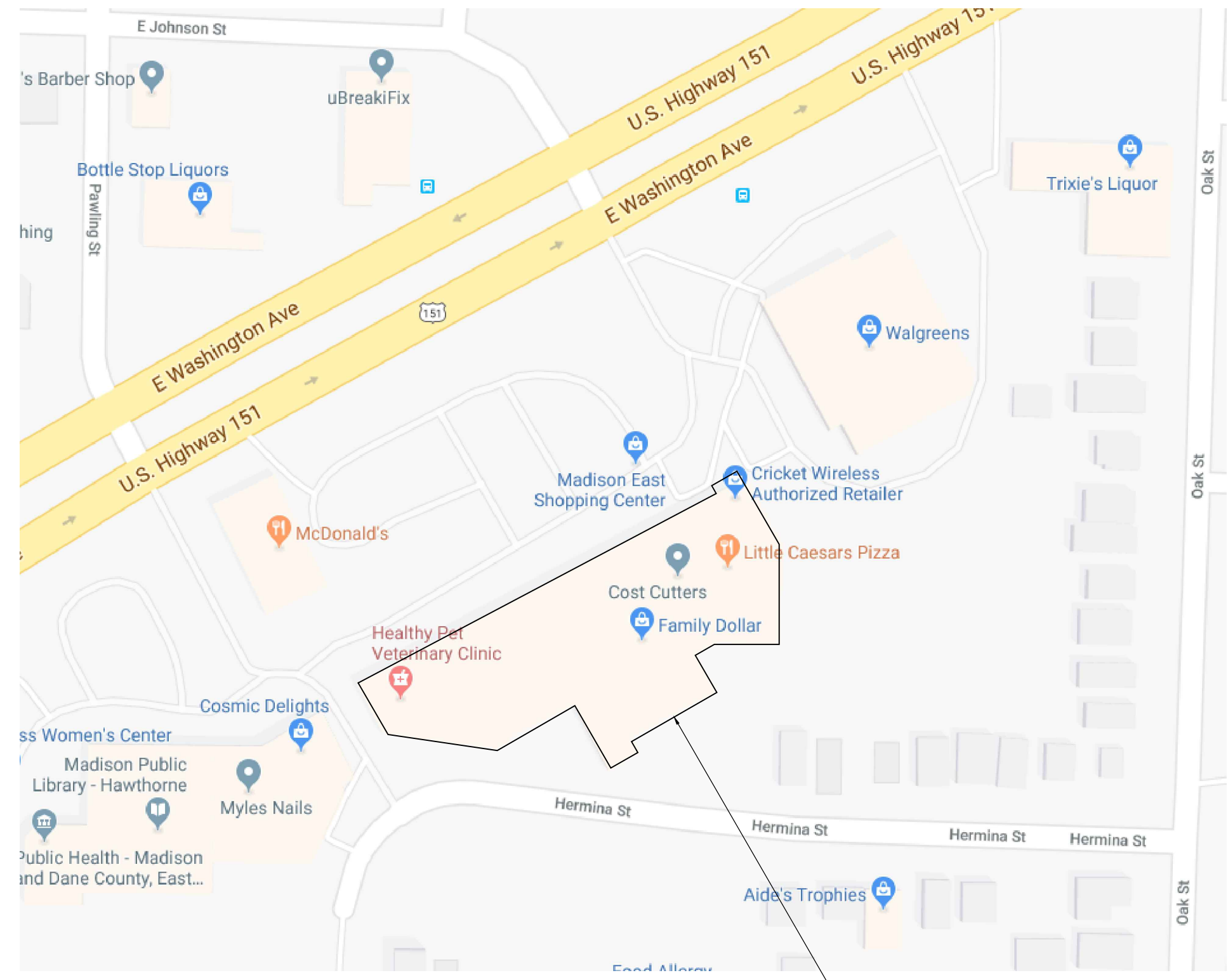


1 DEMO PLAN NOT TO SCALE



**CODE SUMMARY:**  
 PROJECT DESCRIPTION: LEVEL 2 ALTERNATION TO AN EXISTING TENANT.  
 OCCUPANCY: BUSINESS  
 CONSTRUCTION TYPE: IIIIB NON-SPRINKLERED  
 NOTES: RETAIL SPACE INTENDED FOR QUICK TRANSACTIONS AND PICKUPS. SPACE IS 300 SF

**SQUARE FOOTAGES**  
 AREA OF WORK = 600 SF



LOCATION MAP NOT TO SCALE

DESTREE DESIGN ARCHITECTS, INC. HOLDS ALL RIGHTS INCLUDING THE COPYRIGHT OF THIS DOCUMENT. AS WELL AS THE CONCEPTS AND DESIGNS INCORPORATED HEREIN AS AN INSTRUMENT OF SERVICE. AS PROPERTY OF DESTREE DESIGN ARCHITECTS, INC. IT IS NOT TO BE COPIED, DISTRIBUTED, OR USED IN WHOLE OR PART WITHOUT THE EXPRESS WRITTEN CONSENT OF DESTREE DESIGN ARCHITECTS, INC.

MADISON EAST SHOPPING CENTER  
 CHRISTINE'S KITCHEN LLC - EXPANSION  
 2817 EAST WASHINGTON AVE  
 MADISON, WI

ISSUANCES:  
 PLAN COMMISSION: 06.12.19

PROJECT #: 000000.00  
 SHEET NUMBER

**A100**

**PARCEL LINE AND CURVE TABLES**

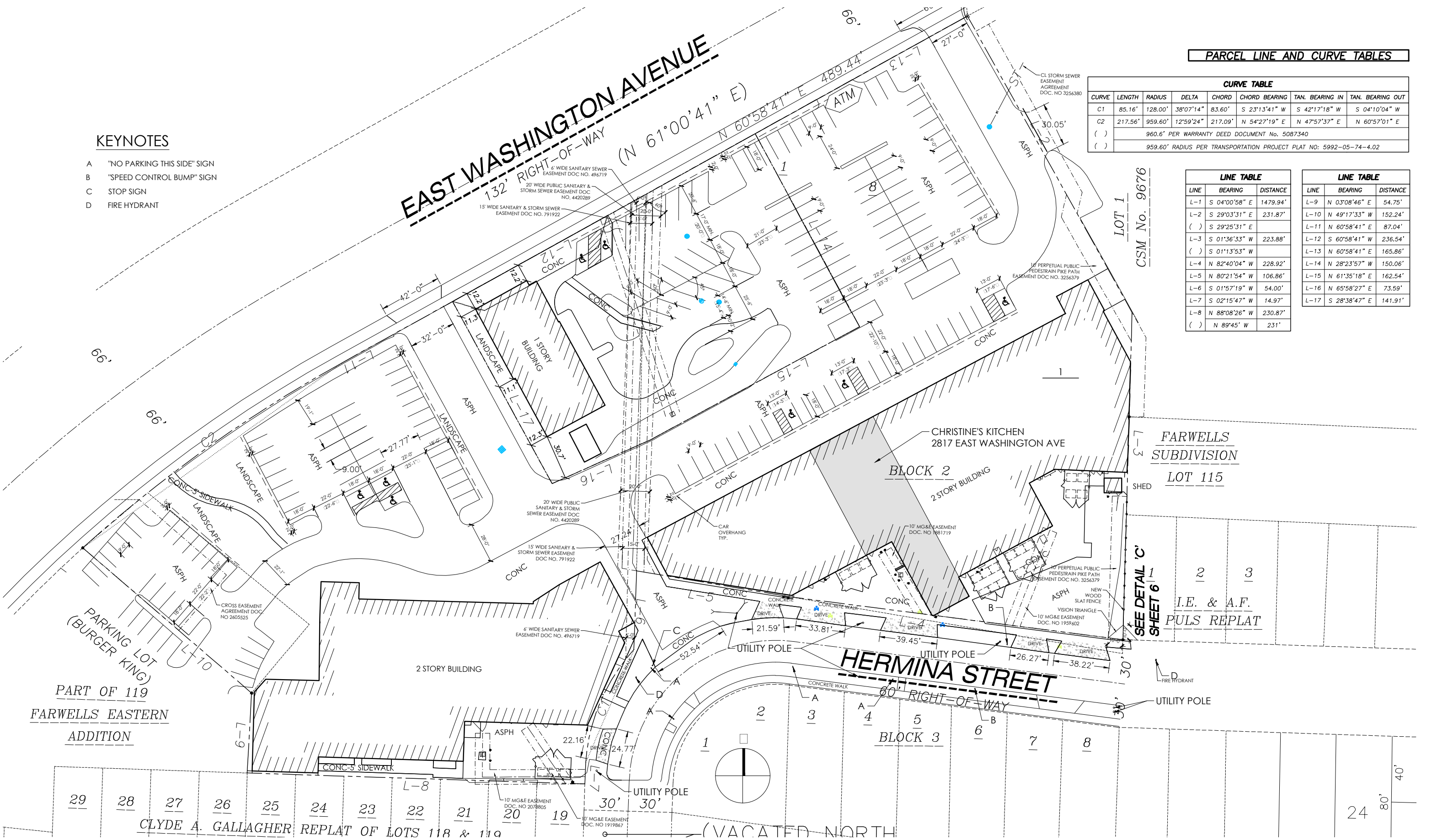
CURVE TABLE						
CURVE	LENGTH	RADIUS	DELTA	CHORD	CHORD BEARING	TAN. BEARING IN TAN. BEARING OUT
C1	85.16'	128.00'	38°07'14"	83.60'	S 23°13'41" W	S 42°17'18" W S 04°10'04" W
C2	217.56'	959.60'	12°59'24"	217.09'	N 54°27'19" E	N 47°57'37" E N 60°57'01" E
( )	960.6' PER WARRANTY DEED DOCUMENT No. 5087340					
( )	959.60' RADIUS PER TRANSPORTATION PROJECT PLAT NO: 5992-05-74-4.02					

LINE TABLE		
LINE	BEARING	DISTANCE
L-1	S 04°00'58" E	1479.94'
L-2	S 29°03'31" E	231.87'
( )	S 29°25'31" E	
L-3	S 01°36'33" W	223.88'
( )	S 01°13'53" W	
L-4	N 82°40'04" W	228.92'
L-5	N 80°21'54" W	106.86'
L-6	S 01°57'19" W	54.00'
L-7	S 02°15'47" W	14.97'
L-8	N 88°08'26" W	230.87'
( )	N 89°45' W	231'

LINE TABLE		
LINE	BEARING	DISTANCE
L-9	N 03°08'46" E	54.75'
L-10	N 49°17'33" W	152.24'
L-11	N 60°58'41" E	87.04'
L-12	S 60°58'41" W	236.54'
L-13	N 60°58'41" E	165.86'
L-14	N 28°23'57" W	150.06'
L-15	N 61°35'18" E	162.54'
L-16	N 65°58'27" E	73.59'
L-17	S 28°38'47" E	141.91'

**KEYNOTES**

- A "NO PARKING THIS SIDE" SIGN
- B "SPEED CONTROL BUMP" SIGN
- C STOP SIGN
- D FIRE HYDRANT



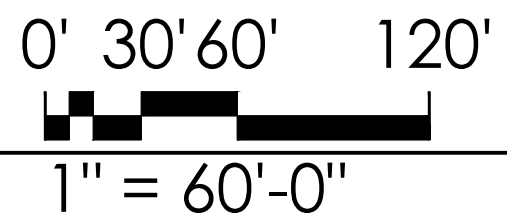
FARWELLS SUBDIVISION  
 LOT 115  
 I.E. & A.F. PULS REPLAT  
 SEE DETAIL 'C' SHEET 6

PART OF 119 FARWELLS EASTERN ADDITION

CLYDE A. GALLAGHER REPLAT OF LOTS 118 & 119



PLAN COMMISSION: 06.12.19



**MADISON EAST SHOPPING CENTER  
 SITE PLAN**

**AS-100**