




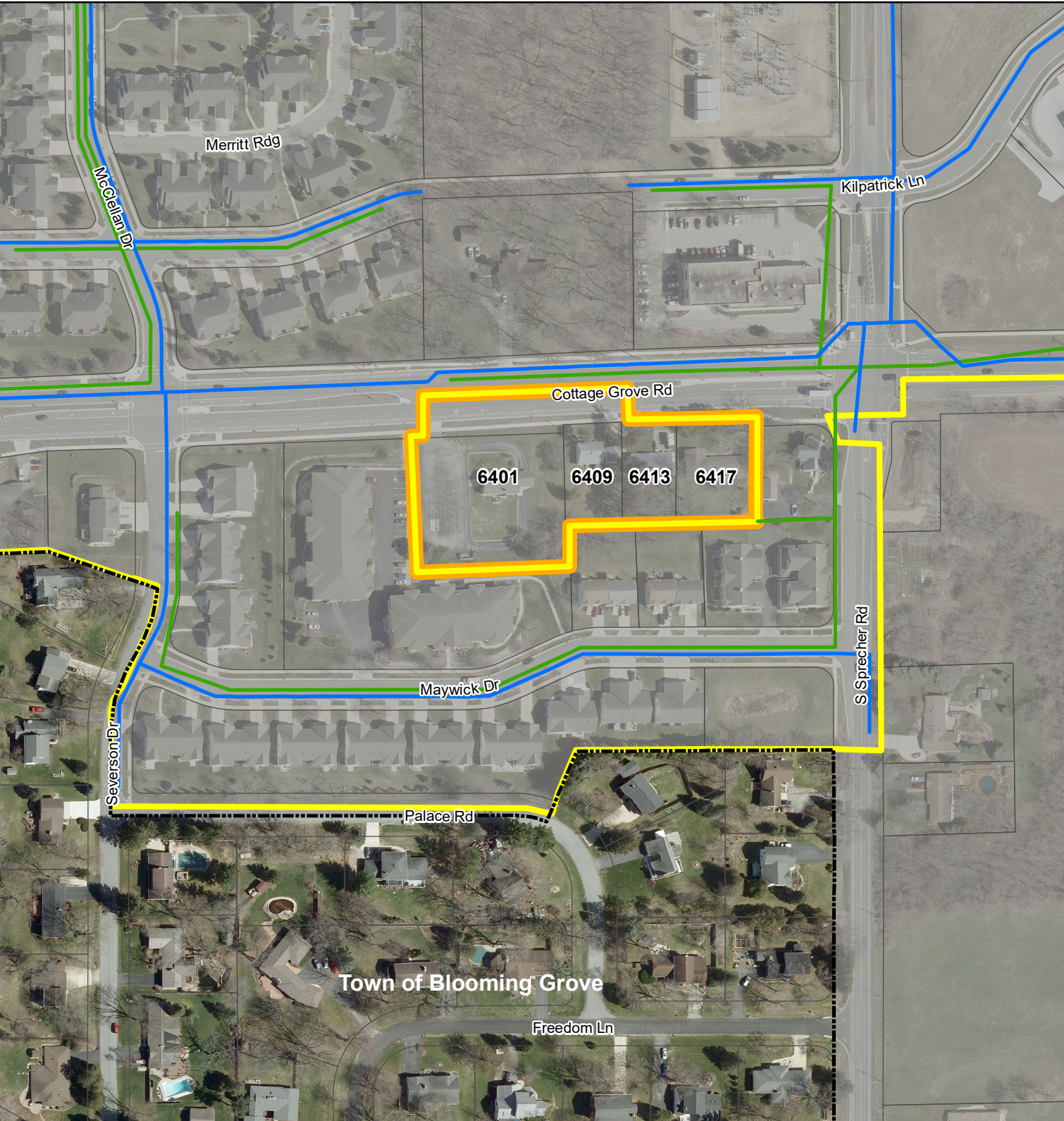


Central Urban Service Area Amendment

6401 - 6417 Cottage Grove Rd

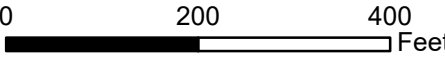
Site and Utility Plan

-  Central Urban Service Area
-  CUSA Amendment Area
-  City of Madison
-  Watermain
-  Sanitary Sewer



Town of Blooming Grove

Map 1



Source: City of Madison Planning, Dane County LIO

