



PHILLIPS

URBAN OUTFITTERS

604 STATE STREET  
Store No. 7  
604 State Street  
Madison, WI 53703

MEP ENGINEERING  
CONSULTANT :  
DEVITA & ASSOCIATES  
669 N. ACADEMY ST.  
GREENVILLE, SC 29601  
PH: (864) 232.6642

ARCH PROJECT #: 0821913  
DRAWN BY:

ISSUE / DATE:

ISSUE 1- 25% DDT
12-17-2008
ISSUE 2- 100% CHECK SET
01-30-2009
ISSUE 3- BID / PERMIT SET
03-03-2009

REVISION :

SHEET TITLE :

COVER SHEET

SHEET NO. :

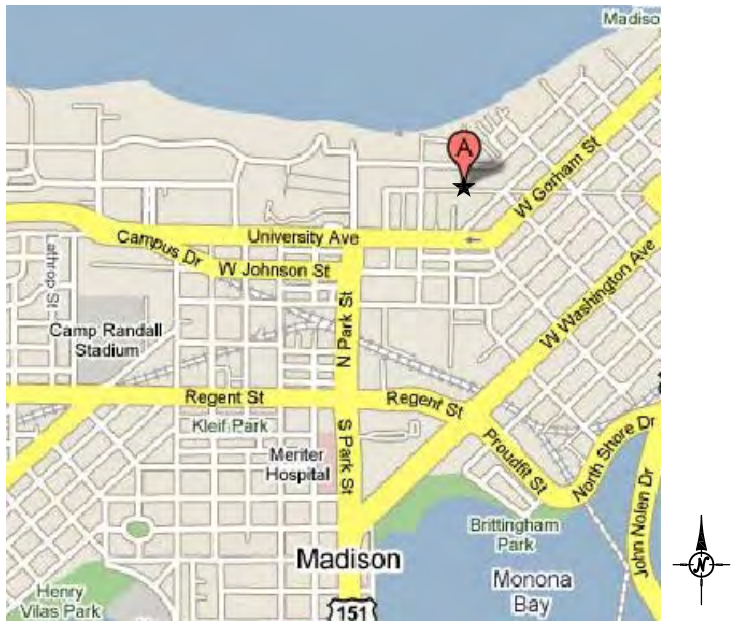


INSPIRATIONAL IMAGES

PROJECT NARRATIVE

THIS PROJECT LIMITED TO THE ADDITION OF 1/4" THICK LASER CUT ALUMINUM POWDER COATED SIGNAGE WITHIN AN EXISTING METAL CLAD FACIA BAND AND THE ADDITION OF 1/8" THICK PRE-FINISHED ALUMINUM PANELS OVER EXISTING SPANDRELITE PANELS. THIS WORK WILL BE COMPLETED IN CONCURRENCE WITH AN INTERIOR RENOVATION.

VICINITY MAP



SHEET INDEX

0	COVER SHEET, LOCATOR MAP, PROJECT NARRATIVE
1	SITE PLAN
2	COLOR STOREFRONT ELEVATIONS
3	STOREFRONT SIGNAGE CALCS
4	STOREFRONT WINDOW AREA CALCS
5	OVERALL SOUTH ELEVATION
6	OVERALL EAST ELEVATION
7	OVERALL NORTH ELEVATION
8	OVERALL WEST ELEVATION
9	SITE PHOTOGRAPHS
10	NEIGHBORHOOD PHOTOGRAPHS
11	COLOR SAMPLES AND DESCRIPTIONS



PHILLIPS

URBAN OUTFITTERS

604 STATE STREET  
Store No. 7  
604 State Street  
Madison, WS 53703

MEP ENGINEERING  
CONSULTANT:  
DEVITA & ASSOCIATES  
669 N. ACADEMY ST.  
GREENVILLE, SC 29601  
PH: (864) 232.6642

ARCH PROJECT #: 0821913  
DRAWN BY:

ISSUE / DATE:

- ISSUE 1- 25% DDT  
12-17-2008
- ISSUE 2- 100% CHECK SET  
01-30-2009
- ISSUE 3- BID / PERMIT SET  
03-03-2009

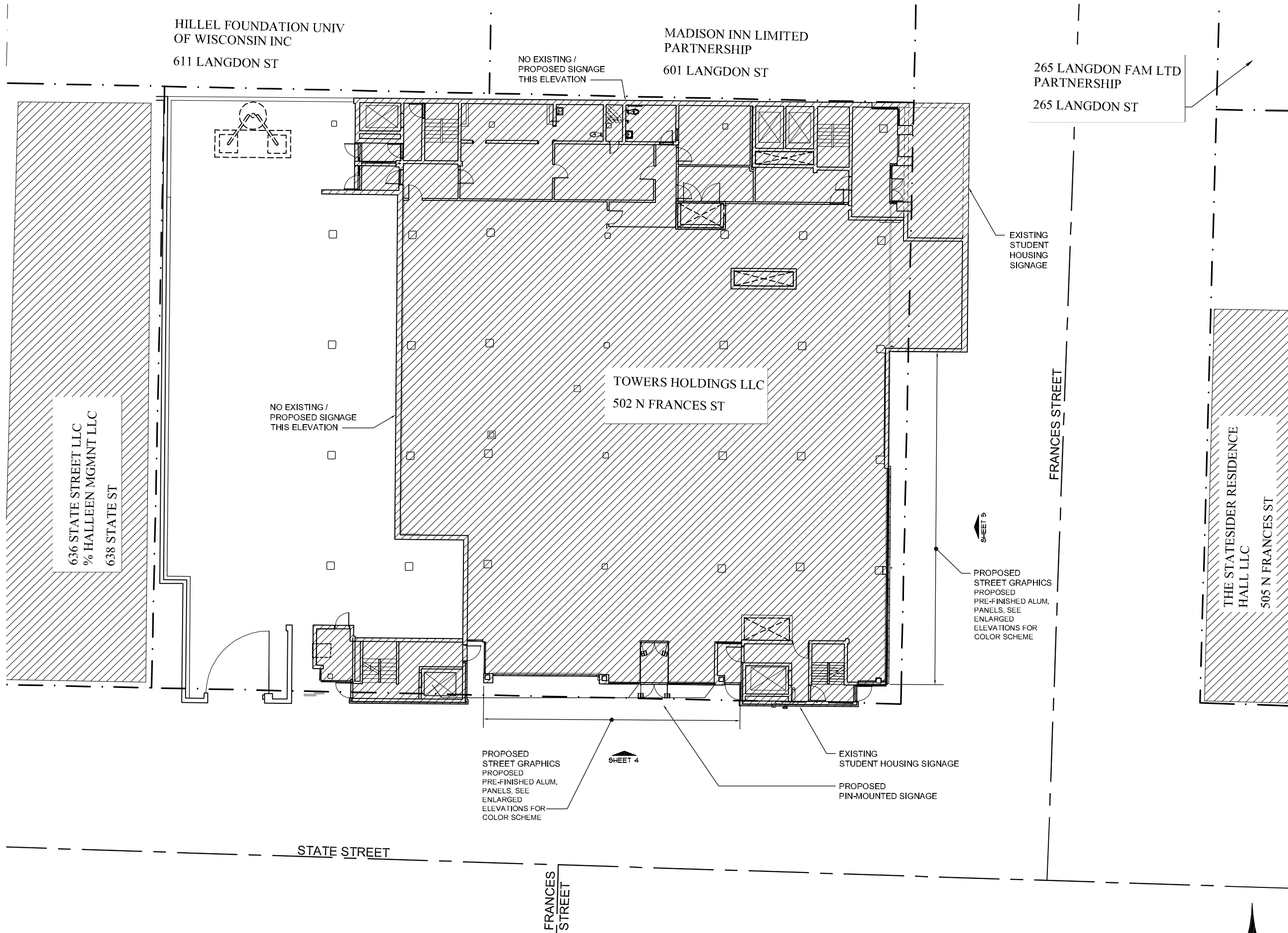
REVISION:

SHEET TITLE:

SITE PLAN

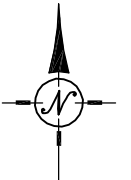
SHEET NO.:

0



SITE PLAN

SCALE: 1/16"=1'-0"



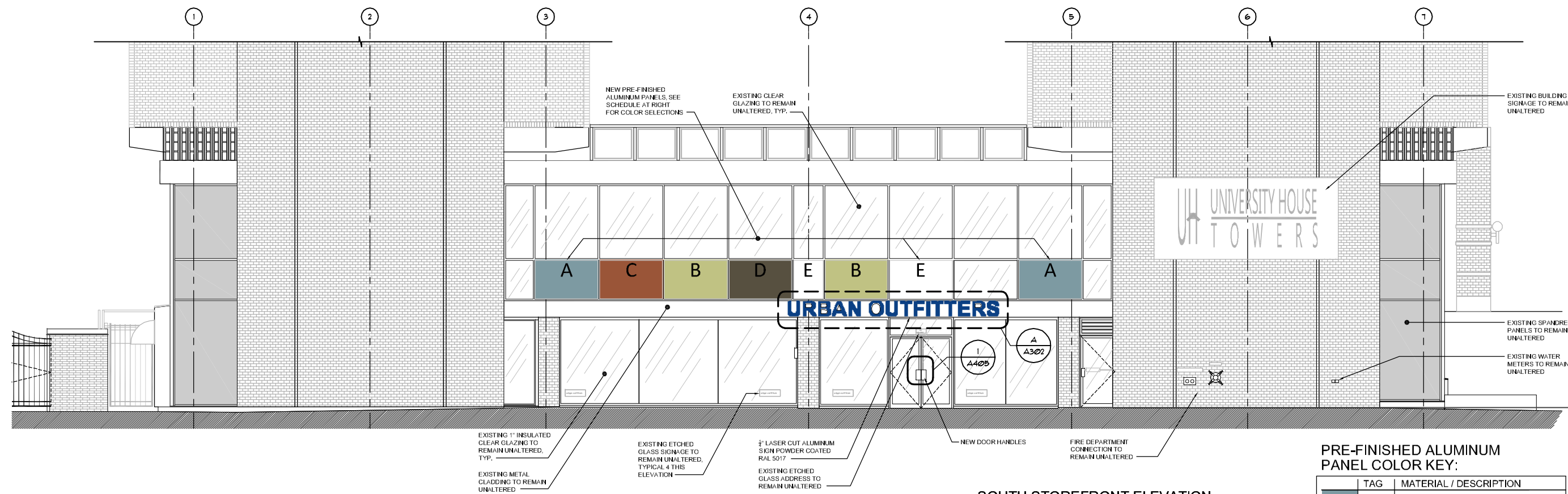


PHILLIPS

URBAN OUTFITTERS

604 STATE STREET  
Store No. 7  
604 State Street  
Madison, WI 53703

MEP ENGINEERING  
CONSULTANT :  
DEVITA & ASSOCIATES  
669 N. ACADEMY ST.  
GREENVILLE, SC 29601  
PH: (864) 232.6642



**SOUTH STOREFRONT ELEVATION**

SCALE: 3/16"=1'-0"

**PRE-FINISHED ALUMINUM PANEL COLOR KEY:**

TAG	MATERIAL / DESCRIPTION
A	PAINT - BENJAMIN MOORE, PROVINCE BLUE 2135-40
B	PAINT - BENJAMIN MOORE, DILL PICKLE 2147-40
C	PAINT - BENJAMIN MOORE, CINNAMON 2174-20
D	PAINT - BENJAMIN MOORE, CHAR BROWN 2137-20
E	PAINT - BENJAMIN MOORE, DECORATOR WHITE 04
SIGN	POWDER COATED - RAL 5017

ARCH PROJECT #: 0821913  
DRAWN BY:

XXX

ISSUE / DATE:

- ISSUE 1- 25% DDT  
12-17-2008
- ISSUE 2- 100% CHECK SET  
01-30-2009
- ISSUE 3- BID / PERMIT SET  
03-03-2009

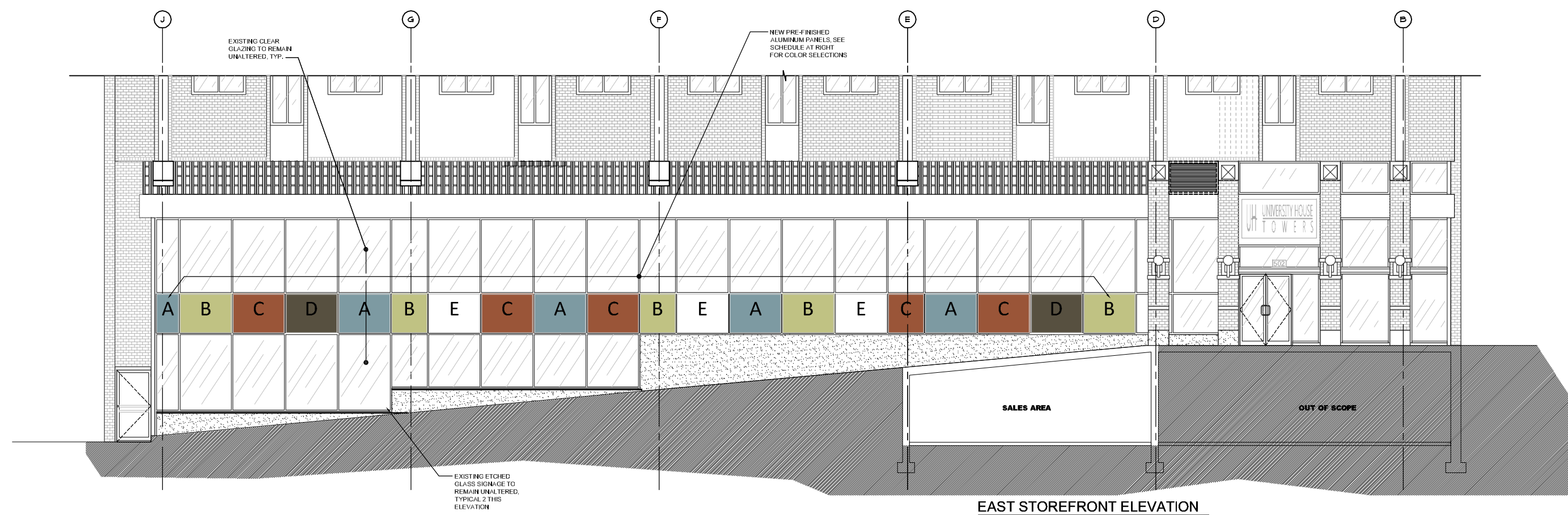
REVISION:

SHEET TITLE :

COLORED  
STOREFRONT  
ELEVATIONS

SHEET NO. :

1



**EAST STOREFRONT ELEVATION**

SCALE: 3/16"=1'-0"

SALES AREA

OUT OF SCOPE



PHILLIPS

URBAN OUTFITTERS

604 STATE STREET  
Store No. 7  
604 State Street  
Madison, WI 53703

MEP ENGINEERING  
CONSULTANT :  
DEVITA & ASSOCIATES  
669 N. ACADEMY ST.  
GREENVILLE, SC 29601  
PH: (864) 232.6642

ARCH PROJECT #: 0821913  
DRAWN BY:

XXX

ISSUE / DATE:

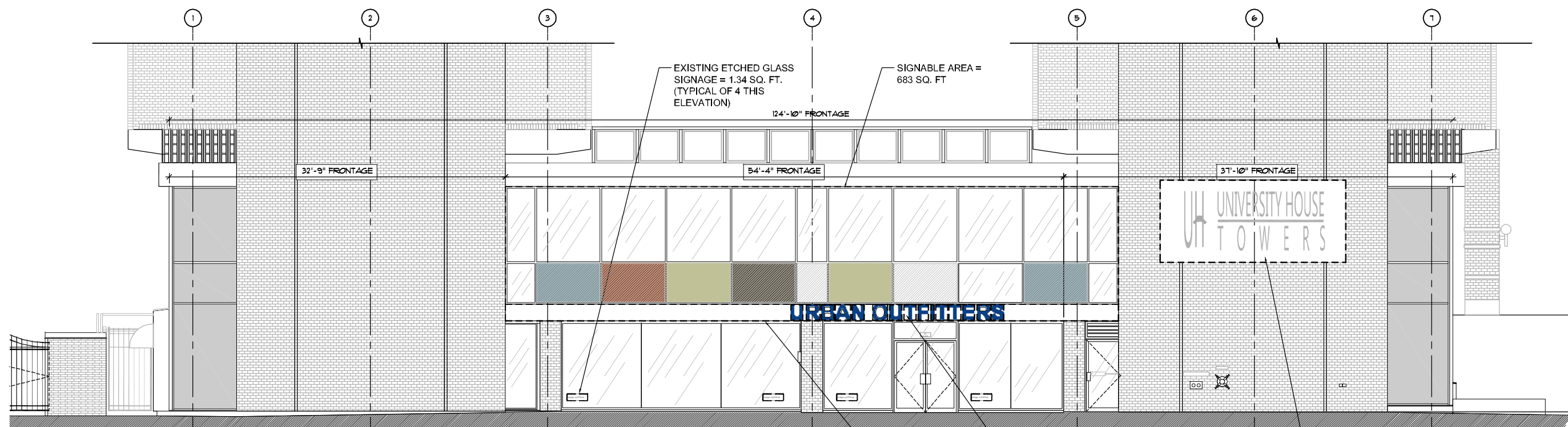
- ISSUE 1- 25% DDT  
12-17-2008
- ISSUE 2- 100% CHECK SET  
01-30-2009
- ISSUE 3- BID / PERMIT SET  
03-03-2009

REVISION:

SHEET TITLE :

STOREFRONT  
SIGNAGE AREA  
CALCS

SHEET NO. :



**SOUTH ELEVATION SIGNAGE CALCS:**

EXISTING	
ETCHED GLASS SIGNAGE	1.34 SQ. FT.
ETCHED GLASS SIGNAGE	1.34 SQ. FT.
ETCHED GLASS SIGNAGE	1.34 SQ. FT.
ETCHED GLASS SIGNAGE	1.34 SQ. FT.
WALL MOUNTED SIGNAGE	145.00 SQ. FT.
PROPOSED FOR URBAN OUTFITTERS	
INDIVIDUAL WALL MTD	26.00 SQ. FT.
TOTAL	176.36 SQ. FT.

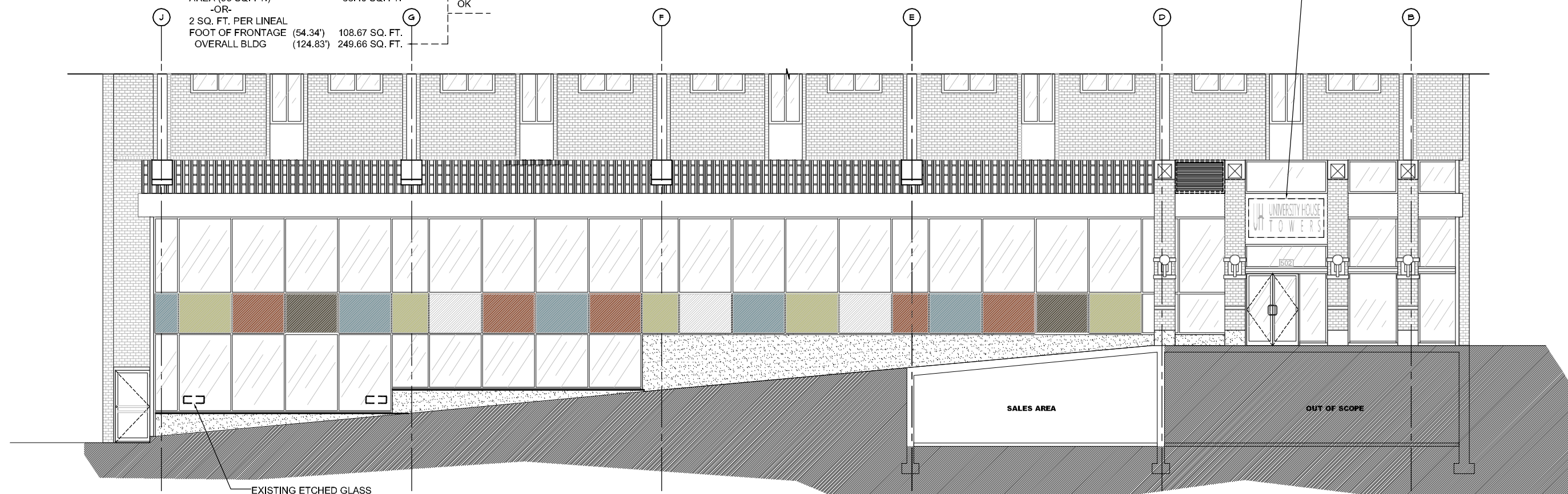
SIGNABLE AREA (EXCLUSIVE TO URBAN OUTFITTERS):	
40% OF SIGNABLE AREA (96 SQ. FT.)	
-OR-	
2 SQ. FT. PER LINEAL FOOT OF FRONTAGE (54.34')	108.67 SQ. FT.
OVERALL BLDG (124.83')	249.66 SQ. FT.

**EAST ELEVATION SIGNAGE CALCS:**

EXISTING	
ETCHED GLASS SIGNAGE	1.34 SQ. FT.
ETCHED GLASS SIGNAGE	1.34 SQ. FT.
WALL MOUNTED SIGNAGE	28.00 SQ. FT.
PROPOSED	
NONE	0.00 SQ. FT.
TOTAL	30.68 SQ. FT.

**SOUTH STOREFRONT ELEVATION**

SCALE: 3/16"=1'-0"



**EAST STOREFRONT ELEVATION**

SCALE: 3/16"=1'-0"



PHILLIPS

URBAN OUTFITTERS

604 STATE STREET  
Store No. 7  
604 State Street  
Madison, WI 53703

MEP ENGINEERING  
CONSULTANT :  
DEVITA & ASSOCIATES  
669 N. ACADEMY ST.  
GREENVILLE, SC 29601  
PH: (864) 232.6642

ARCH PROJECT #: 0821913  
DRAWN BY:

XXX

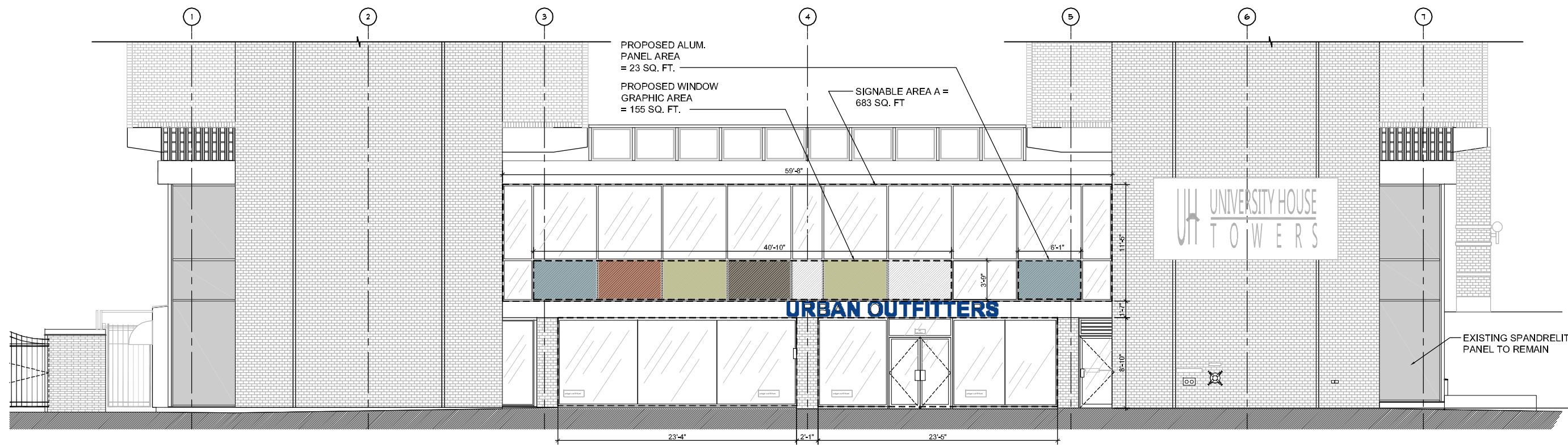
ISSUE / DATE:

ISSUE 1- 25% DDT  
12-17-2008  
ISSUE 2- 100% CHECK SET  
01-30-2009  
ISSUE 3- BID / PERMIT SET  
03-03-2009

REVISION:

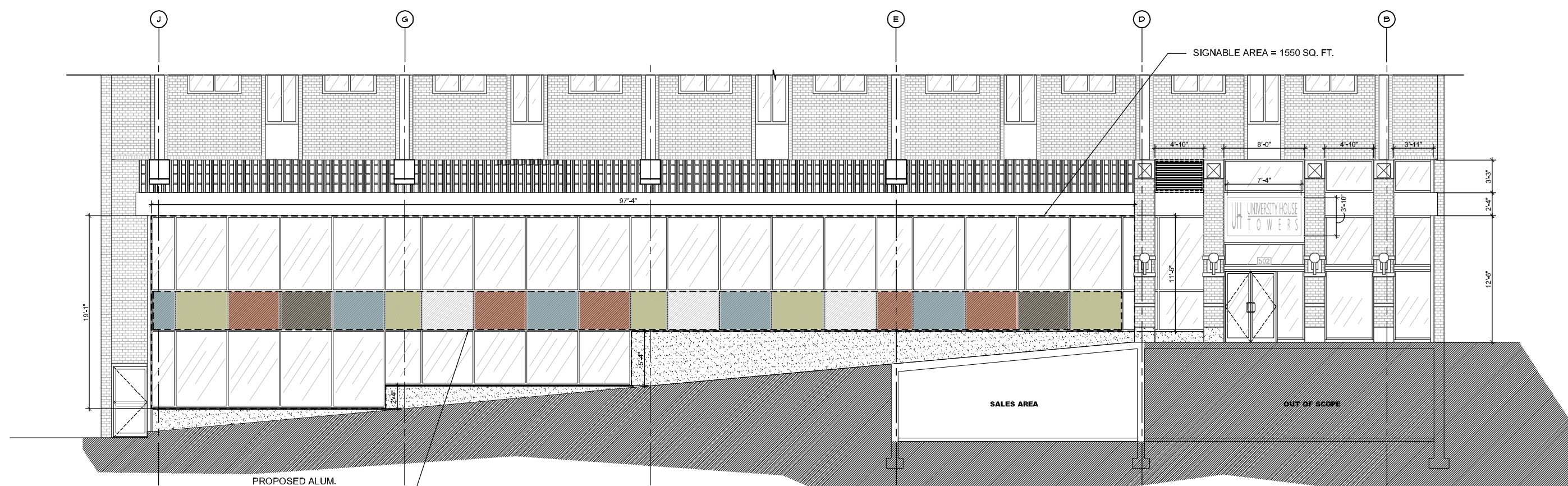
SHEET TITLE:

STOREFRONT  
WINDOW  
GRAPHICS AREA  
CALCS  
SHEET NO.:



SOUTH STOREFRONT ELEVATION

SCALE: 3/16"=1'-0"



EAST STOREFRONT ELEVATION

SCALE: 3/16"=1'-0"



PHILLIPS

URBAN OUTFITTERS

604 STATE STREET  
Store No. 7  
604 State Street  
Madison, WI 53703

MEP ENGINEERING  
CONSULTANT :  
DEVITA & ASSOCIATES  
669 N. ACADEMY ST.  
GREENVILLE, SC 29601  
PH: (864) 232.6642

ARCH PROJECT #: 0821913  
DRAWN BY:

TG

ISSUE / DATE:

ISSUE 1- 25% DDT  
12-17-2008  
ISSUE 2- 100% CHECK SET  
01-30-2009  
ISSUE 3- BID / PERMIT SET  
03-03-2009

REVISION :

SHEET TITLE :

OVERALL  
STOREFRONT  
ELEVATION -  
SOUTH

SHEET NO. :

4

EL: 138'-5 3/8"  
T.O. ROOF



- NOTE:
- ① EXISTING SPANDRELITE PANEL TO REMAIN
  - ② EXISTING SPANDRELITE PANEL TO BE COVERED BY NEW PRE-FINISHED ALUMINUM PANEL

EL: 0'-0"  
B.O. FIRST FLOOR

STOREFRONT ELEVATION - SOUTH

SCALE: 1/8"=1'-0"



PHILLIPS

URBAN OUTFITTERS

604 STATE STREET  
Store No. 7  
604 State Street  
Madison, WI 53703

MEP ENGINEERING  
CONSULTANT :  
DEVITA & ASSOCIATES  
669 N. ACADEMY ST.  
GREENVILLE, SC 29601  
PH: (864) 232.6642

ARCH PROJECT #: 0821913  
DRAWN BY:

TG

ISSUE / DATE:

ISSUE 1- 25% DDT  
12-17-2008  
ISSUE 2- 100% CHECK SET  
01-30-2009  
ISSUE 3- BID / PERMIT SET  
03-03-2009

REVISION :

SHEET TITLE :

OVERALL  
STOREFRONT  
ELEVATION - EAST

SHEET NO. :

5

EL.: 138'-5 3/8"  
T.O. ROOF



EL.: 0'-0"  
B.O. FIRST FLOOR

STOREFRONT ELEVATION - EAST

SCALE: 1/8"=1'-0"

- NOTE:
- ① EXISTING SPANDRELITE PANEL TO REMAIN
  - ② EXISTING SPANDRELITE PANEL TO BE COVERED BY NEW PRE-FINISHED ALUMINUM PANEL



PHILLIPS

URBAN OUTFITTERS

604 STATE STREET  
Store No. 7  
604 State Street  
Madison, WS 53703

MEP ENGINEERING  
CONSULTANT :  
DEVITA & ASSOCIATES  
669 N. ACADEMY ST.  
GREENVILLE, SC 29601  
PH: (864) 232.6642

ARCH PROJECT #: 0821913  
DRAWN BY:

ISSUE / DATE:

- ISSUE 1- 25% DDT  
12-17-2008
- ISSUE 2- 100% CHECK SET  
01-30-2009
- ISSUE 3- BID / PERMIT SET  
03-03-2009

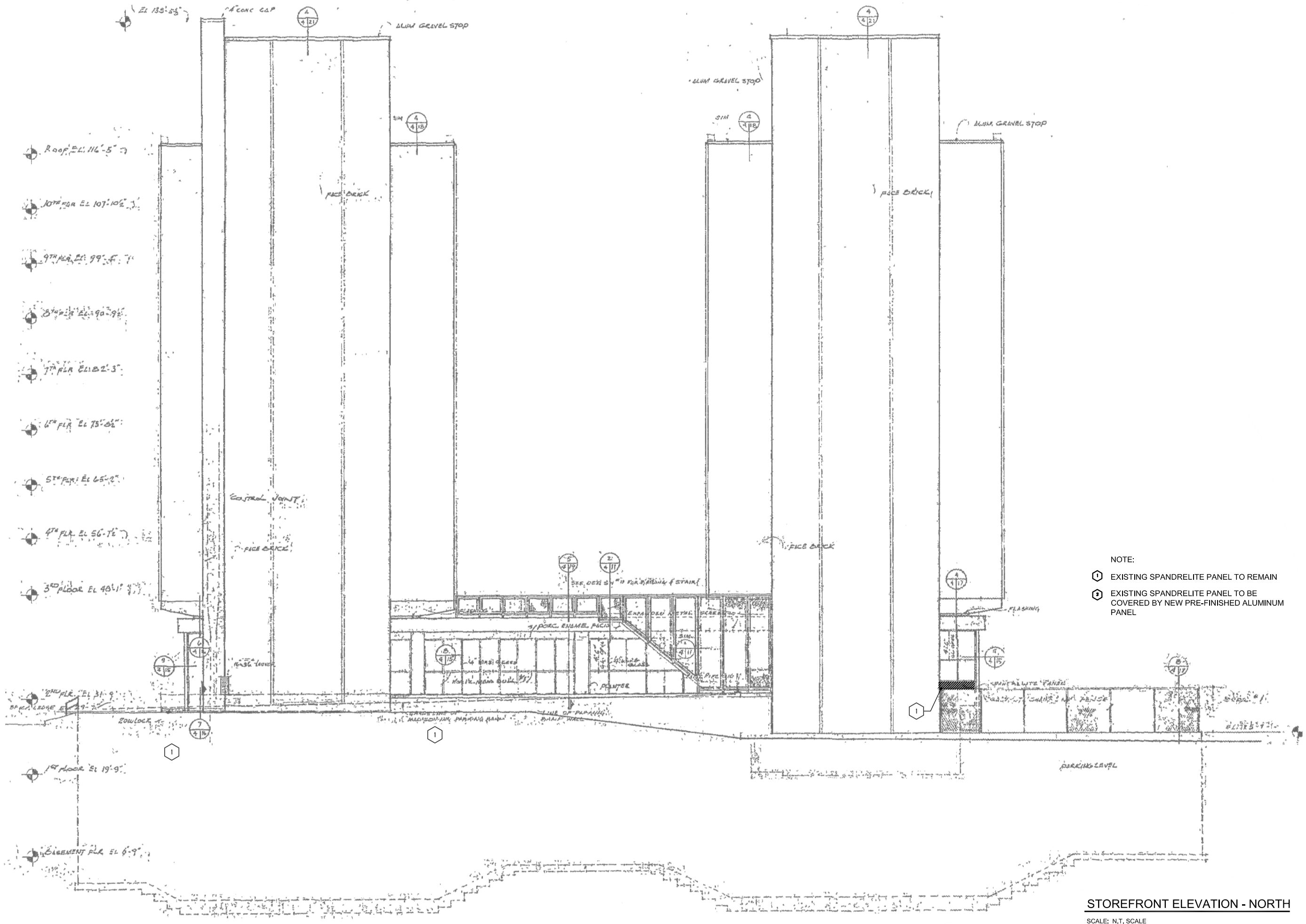
REVISION :

SHEET TITLE :

OVERALL  
STOREFRONT  
ELEVATION -  
NORTH

SHEET NO. :

6



NOTE:  
 ① EXISTING SPANDRELITE PANEL TO REMAIN  
 ② EXISTING SPANDRELITE PANEL TO BE COVERED BY NEW PRE-FINISHED ALUMINUM PANEL

STOREFRONT ELEVATION - NORTH  
 SCALE: N.T. SCALE







PHOTO 1



PHOTO 2



PHOTO 3



PHOTO 4



PHOTO 5



PHOTO 6



PHOTO 7



PHOTO 8

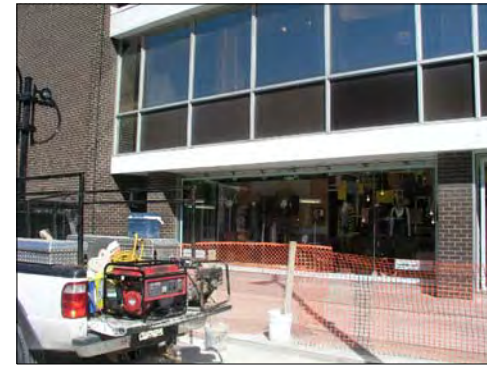


PHOTO 9



PHOTO 10



PHOTO 11



PHOTO 12



PHOTO 13



PHOTO 14



PHOTO 15



PHOTO 16



PHOTO 17



PHOTO 18



PHOTO 19

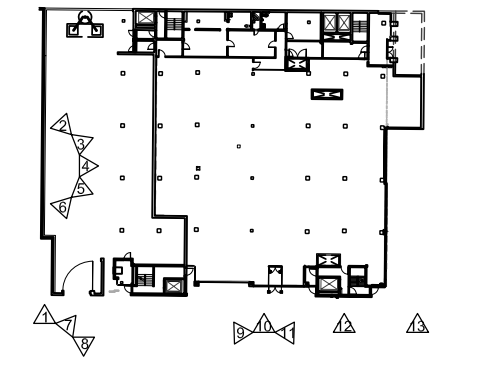


PHOTO KEY PLAN



PHILLIPS

URBAN OUTFITTERS

604 STATE STREET  
Store No. 7  
604 State Street  
Madison, WI 53703

MEP ENGINEERING  
CONSULTANT :  
DEVITA & ASSOCIATES  
669 N. ACADEMY ST.  
GREENVILLE, SC 29601  
PH: (864) 232.6642

ARCH PROJECT #: 0821913  
DRAWN BY:

ISSUE / DATE:

ISSUE 1- 25% DDT  
12-17-2008  
ISSUE 2- 100% CHECK SET  
01-30-2009  
ISSUE 3- BID / PERMIT SET  
03-03-2009

REVISION :

SHEET TITLE :

PHOTOGRAPHS

SHEET NO. :

8



553 STATE STREET (EAST)



553 STATE STREET



603 STATE STREET



613 - 617 STATE STREET



619 - 625 STATE STREET



627 - 631 STATE STREET



639 STATE STREET



651 STATE STREET



661 - 665 STATE STREET



673 STATE STREET



676 STATE STREET



664 - 662 STATE STREET



652 - 658 STATE STREET



640 STATE STREET



636 STATE STREET



STATE STREET



FRANCES STREET



564 STATE STREET



PHILLIPS

URBAN OUTFITTERS

604 STATE STREET  
Store No. 7  
604 State Street  
Madison, WS 53703

MEP ENGINEERING  
CONSULTANT :  
DEVITA & ASSOCIATES  
669 N. ACADEMY ST.  
GREENVILLE, SC 29601  
PH: (864) 232.6642

ARCH PROJECT #: 0821913  
DRAWN BY:

ISSUE / DATE:

- ISSUE 1- 25% DDT  
12-17-2008
- ISSUE 2- 100% CHECK SET  
01-30-2009
- ISSUE 3- BID / PERMIT SET  
03-03-2009

REVISION :

SHEET TITLE :

NEIGHBORHOOD  
PHOTOGRAPHS

SHEET NO. :



**PHILLIPS**

**URBAN OUTFITTERS**

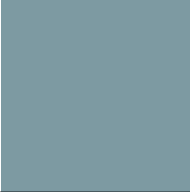
604 STATE STREET  
Store No. 7  
604 State Street  
Madison, WI 53703

MEP ENGINEERING  
CONSULTANT :  
DEVITA & ASSOCIATES  
669 N. ACADEMY ST.  
GREENVILLE, SC 29601  
PH: (864) 232.6642

**PRE-FINISHED ALUMINUM  
PANEL COLOR KEY:**

TAG	MATERIAL / DESCRIPTION
A	PAINT - BENJAMIN MOORE, PROVINCE BLUE 2135-40
B	PAINT - BENJAMIN MOORE, DILL PICKLE 2147-40
C	PAINT - BENJAMIN MOORE, CINNAMON 2174-20
D	PAINT - BENJAMIN MOORE, CHAR BROWN 2137-20
E	PAINT - BENJAMIN MOORE, DECORATOR WHITE 04
SIGN	POWDER COATED - RAL 5017

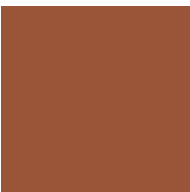
PROVINCE BLUE



DILL PICKLE



CINNAMON



CHAR BROWN



RAL 5017



ARCH PROJECT #: 0821913  
DRAWN BY:

XXX

ISSUE / DATE:

ISSUE 1- 25% DDT

12-17-2008

ISSUE 2- 100% CHECK SET

01-30-2009

ISSUE 3- BID / PERMIT SET

03-03-2009

REVISION:

SHEET TITLE :

**COLOR SAMPLES  
& DESCRIPTIONS**

SHEET NO. :