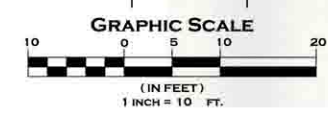


A SITE PLAN
1"=10'-0"



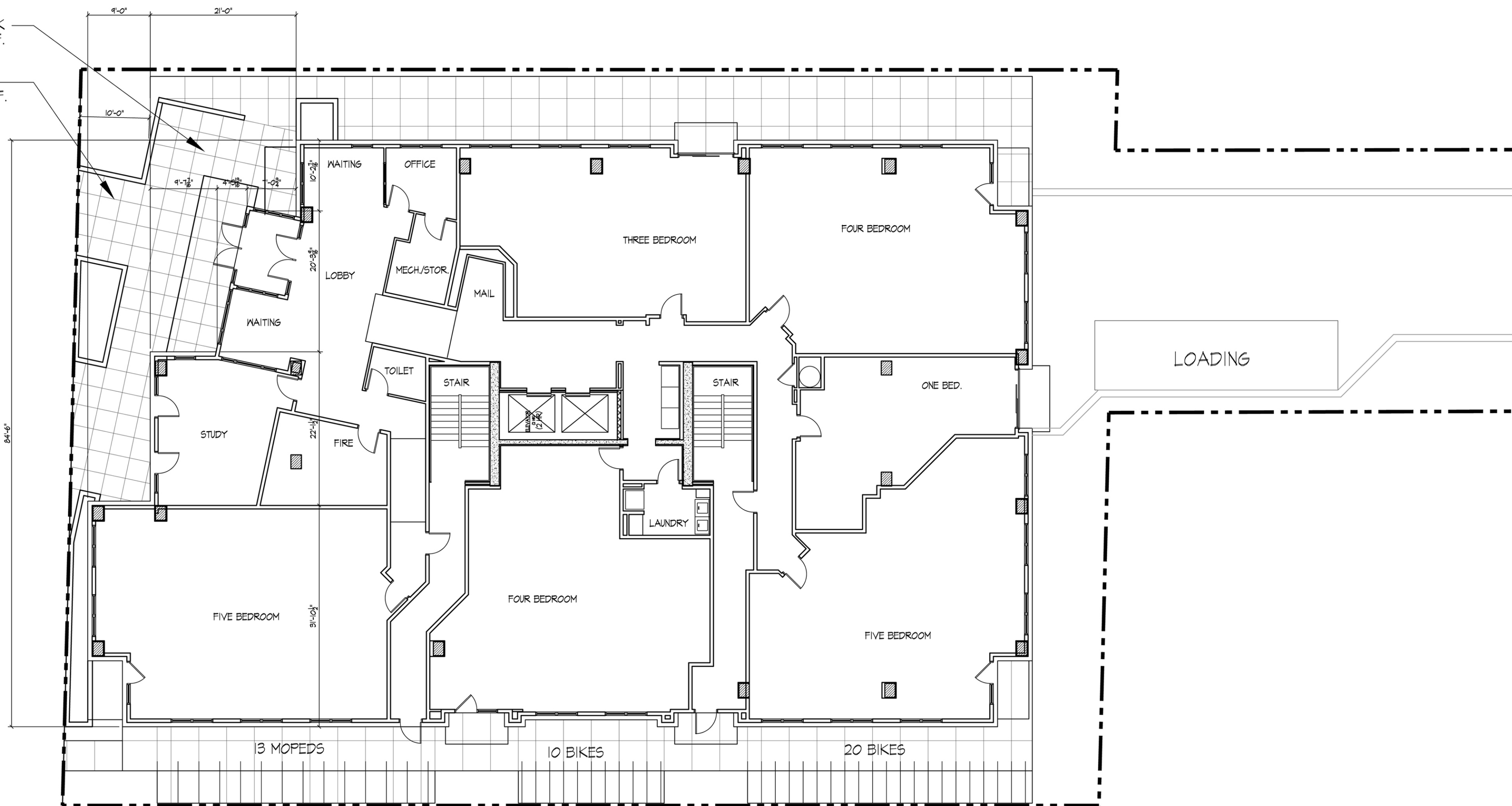
Dayton Street

April 18, 2012

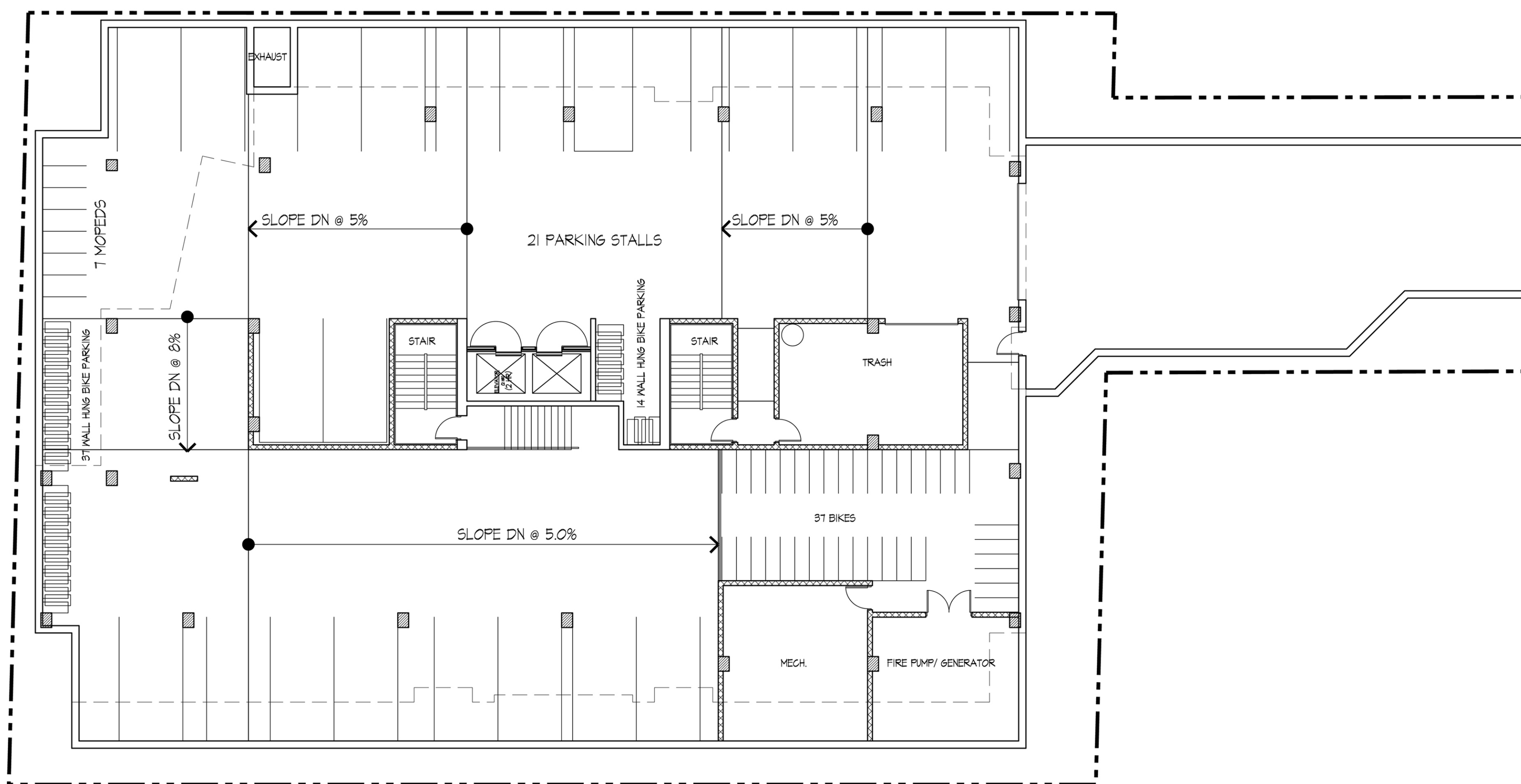
KNOTHE & BRUCE
architects

PROJECT #1001

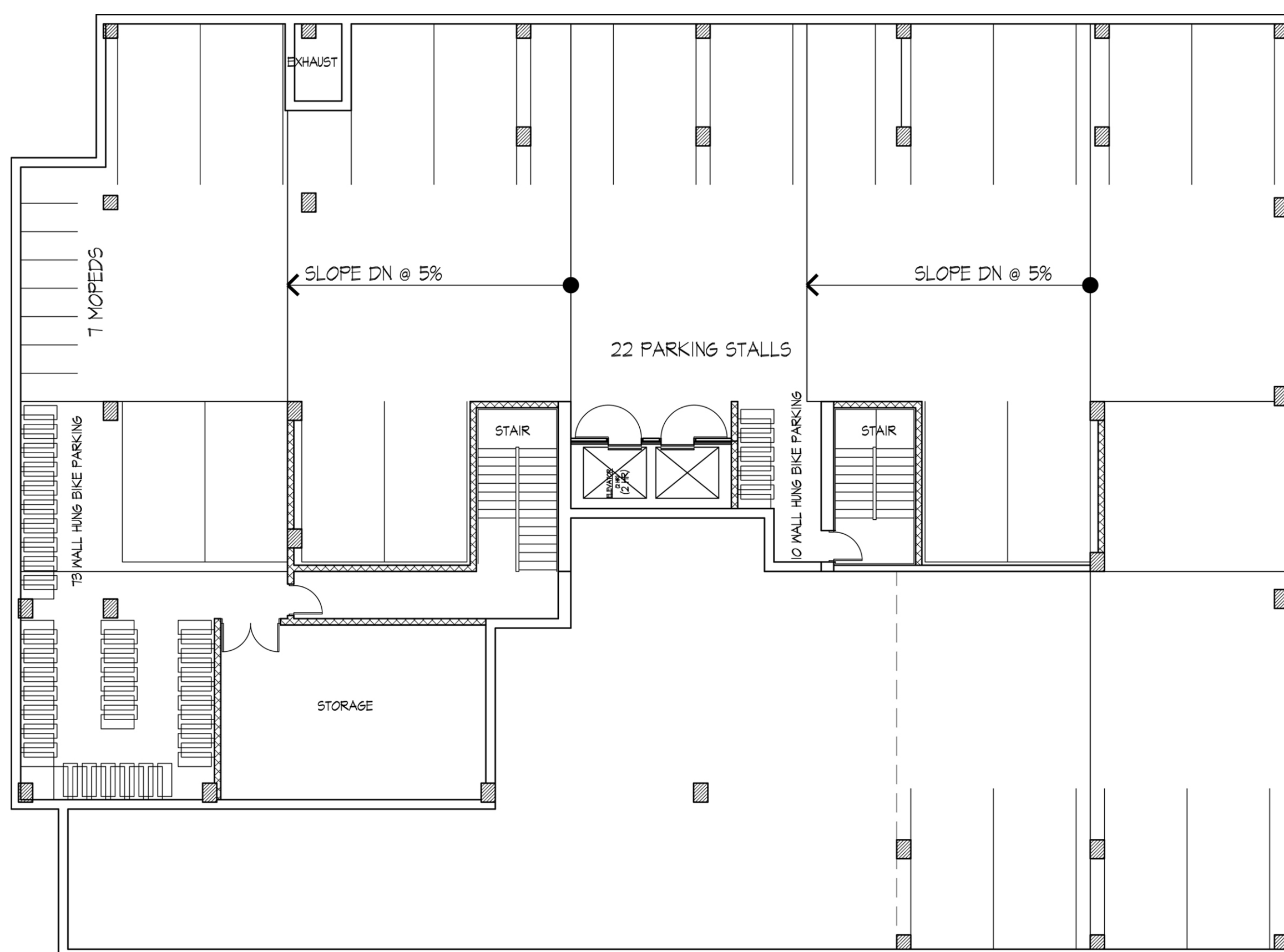
PROPOSED SETBACK
OPEN SPACE 1101 S.F.
10' SETBACK
OPEN SPACE 845 S.F.



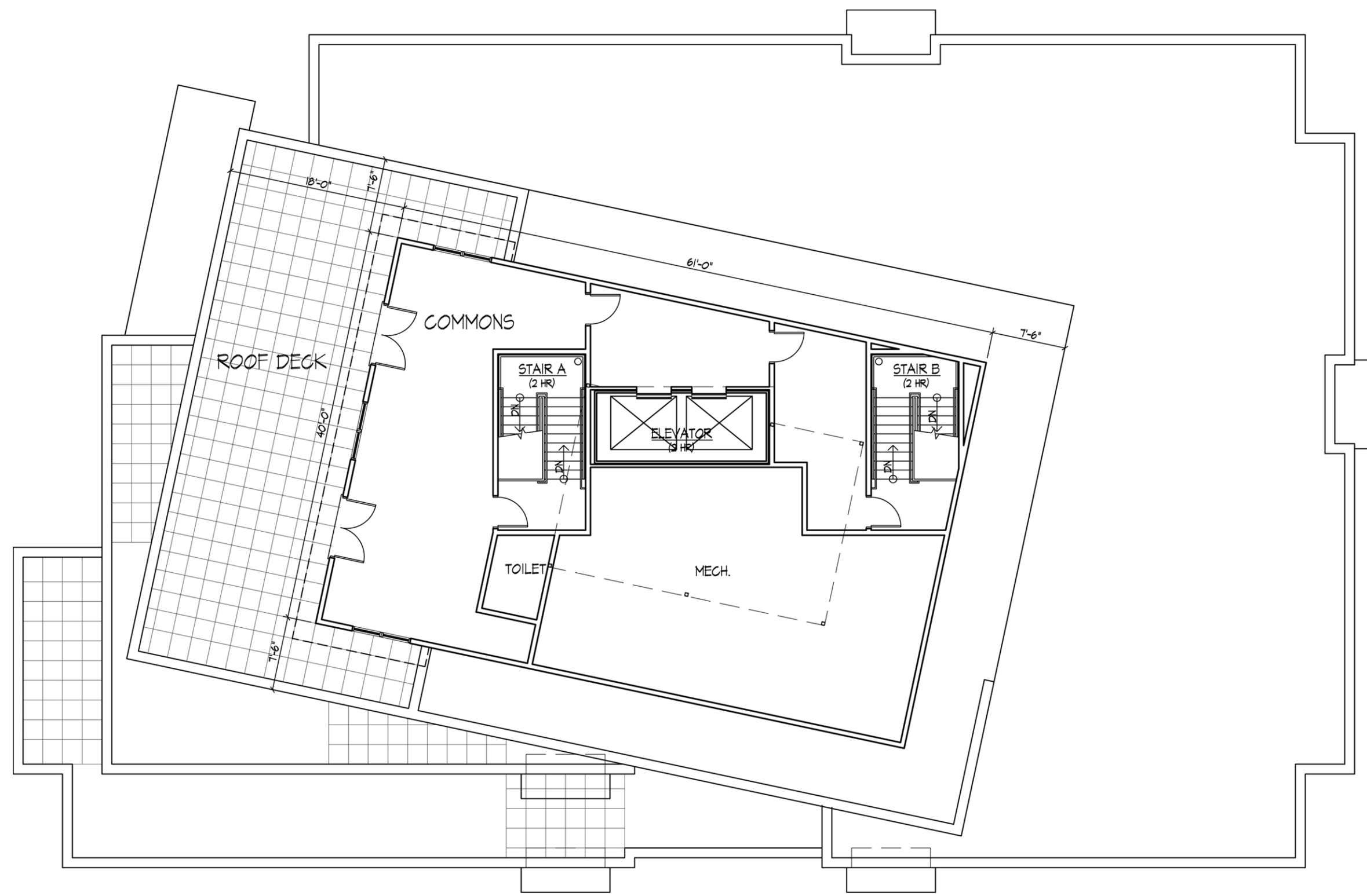
FIRST FLOOR PLAN
1/8" = 1'-0"



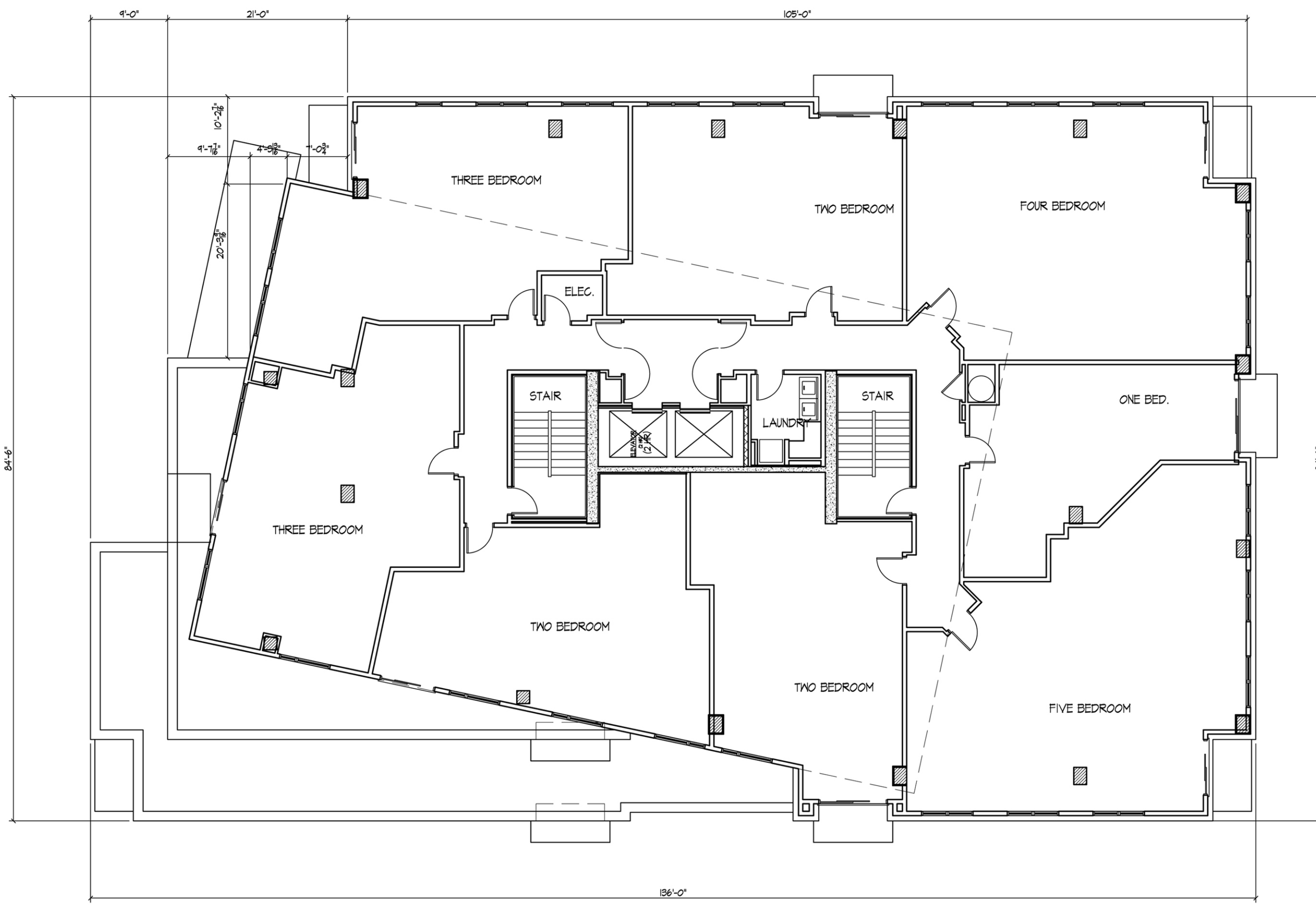
PARKING LEVEL 1 PLAN
1/8" = 1'-0"



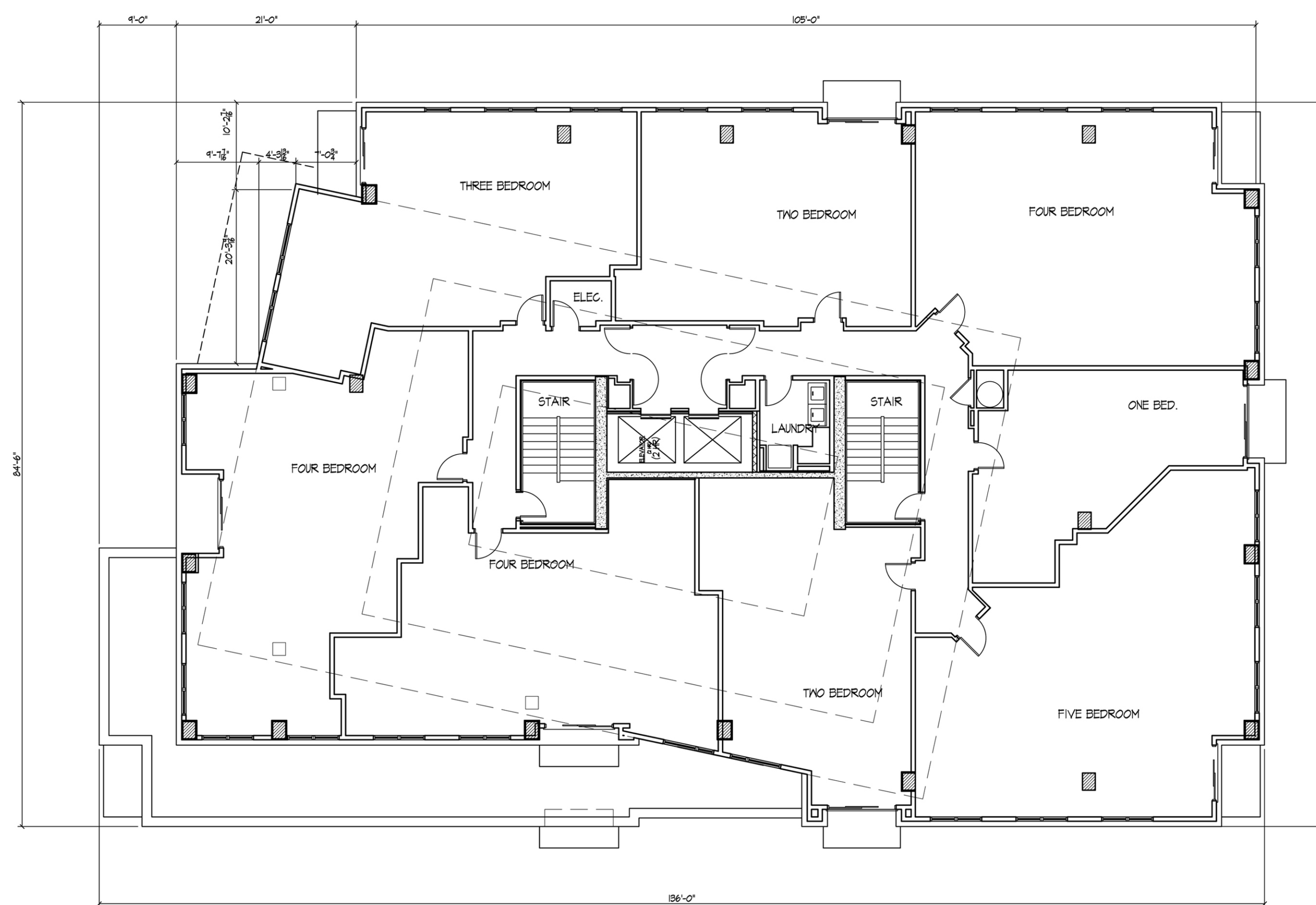
PARKING LEVEL 2 PLAN
1/8" = 1'-0"



ROOF/PENTHOUSE PLAN
1/8" = 1'-0"



EIGHTH FLOOR PLAN
1/8" = 1'-0"



FIFTH-SEVENTH FLOOR PLANS
1/8" = 1'-0"



North Elevation Dayton Street

April 18, 2012

KNOTHE
& BRUCE
architects

PROJECT #1001



West Elevation
Dayton Street

April 18, 2012

KNOTHE
& BRUCE
architects

PROJECT #1001



Perspectives Dayton Street

April 18, 2012

KNOTHE
& BRUCE
architects

PROJECT #1001



Street Perspective Dayton Street

April 18, 2012

KNOTHE
& BRUCE
architects

PROJECT #1001