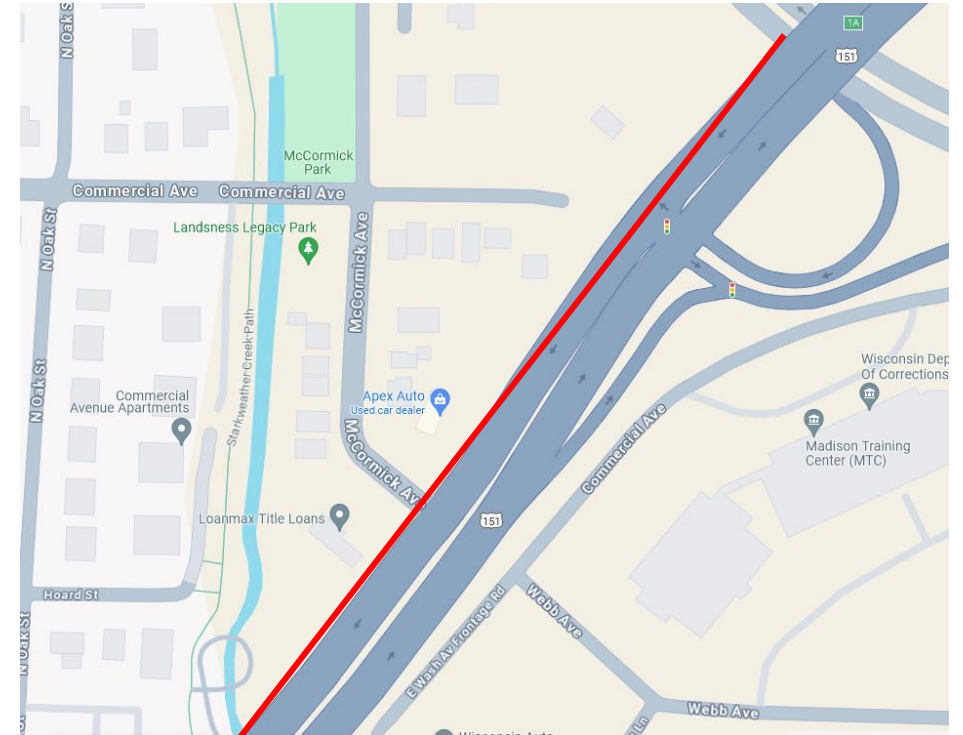


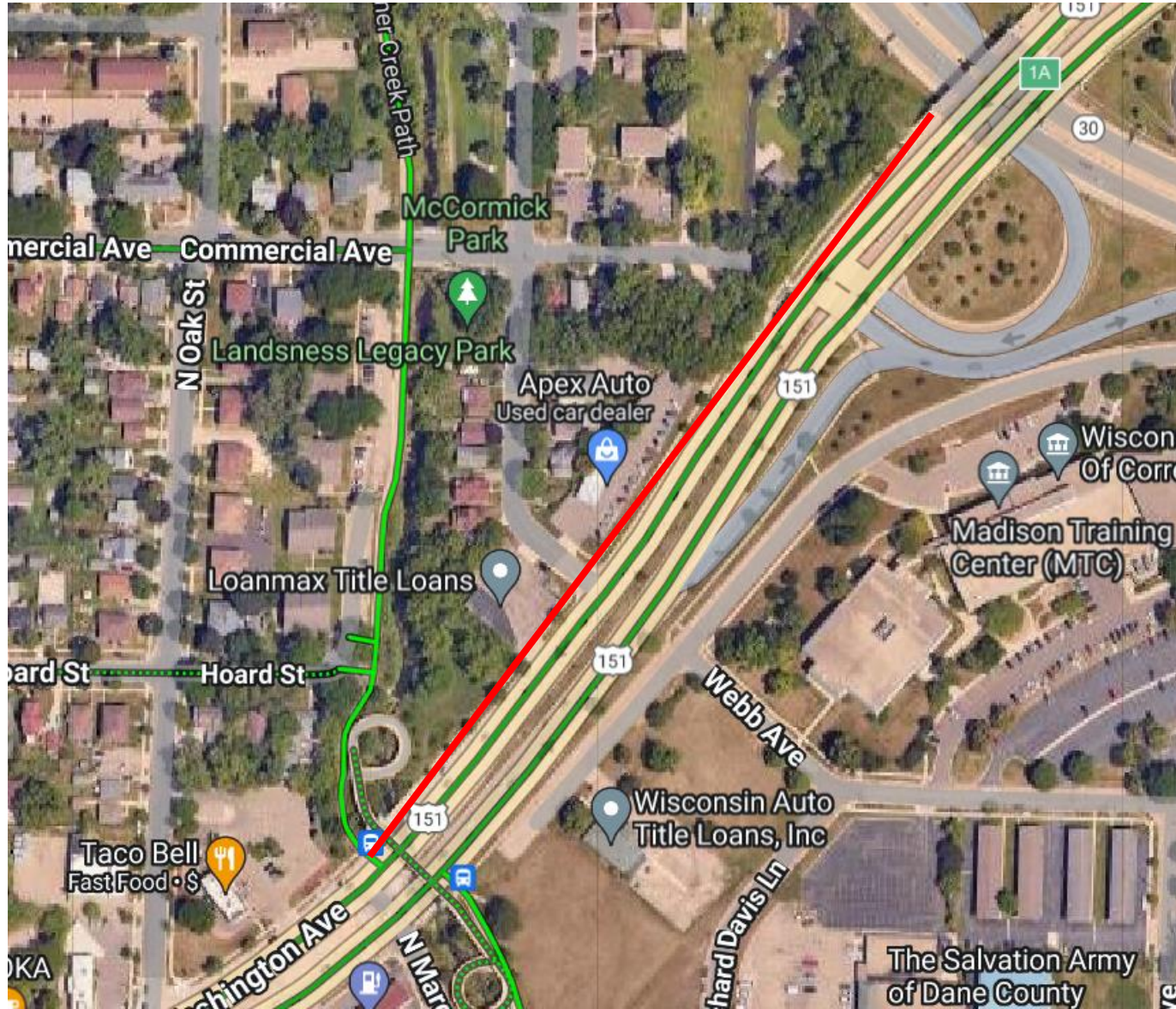
Hoard Street Connection

Connection from E Washington near Aberg Ave to Hoard St

- Original plan to widen sidewalk on E Washington
- Many trees, right of way constraints
- Surveyed to see if can make connection at Commercial Ave - steep grades in this area



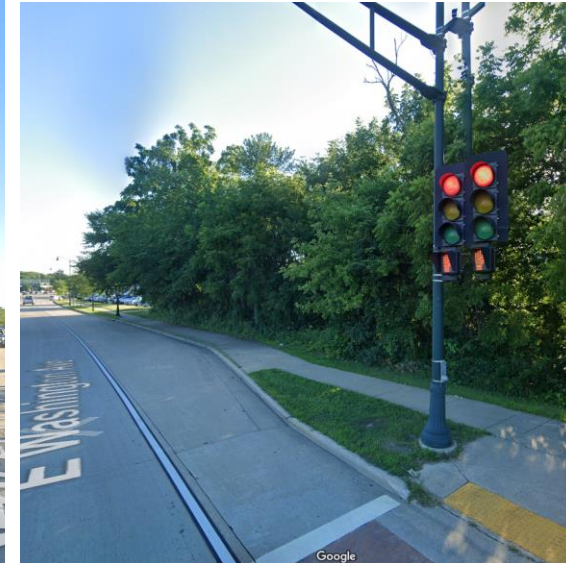
Hoard St Connection along E Washington



Hoard St Connection along E Washington



Commercial Ave cul-de-sac – worn path to East Washington
Steep Grades



Narrow ROW with trees, poles, lights in right of way



081032312027
3040 Commercial Ave
DIAMOND, KATHERINE T
BRIAN J WARD

081032312035
3046 Commercial Ave
JUSTIN, WHITNEY
BRENDAN J LOULA

**SUBSTANTIAL
TREE CLEARING**

0812043
Commercial Ave
AUGUSTA REALTY INC
SHIMANSKI RLTY INC

081032312051
3034 Commercial Ave
AUGUSTA REALTY INC
ATTN G SHIMANSKI RLTY INC

HWY 30

E WASHINGTON AVE

COMMERCIAL AVE

5% GRADE

VERY TIGHT CURVE

005201034
5 Commercial Ave
DUSTIN & JENNIFER

071005201026
3007 Commercial Ave
EMARS, JASON

071005201018
3015 Commercial Ave Unit CDM
AMERICORPS CDM UNIT OWNRS
ASSOC % TIM JENSEN

071005201117
3025 Commercial Ave
GLACIERS EDGE LLC
SUITE 101

071005201068
529 McCormick Ave

081032312027
3040 Commercial Ave
DIAMOND, KATHERINE T
BRIAN J WARD

081032312035
3046 Commercial Ave
JUSTIN, WHITNEY
BRENDAN J LOULA

**SUBSTANTIAL
TREE CLEARING**

0812043
Commercial Ave
ATA REALTY INC
SHIMANSKI RLTY INC

081032312051
3034 Commercial Ave
AUGUSTA REALTY INC
ATTN G SHIMANSKI RLTY INC

COMMERCIAL AVE

**>5% GRADE = REQUIRES
LANDINGS EVERY 30-FT**

E WASHINGTON AVE

HWY 30

005201034
5 Commercial Ave
LP, DUSTIN & JENNIFER

071005201026
3007 Commercial Ave
EMARS, JASON

071005201018
3015 Commercial Ave Unit CDM
AMERICORPS CDM UNIT OWNRS
ASSOC % TIM JENSEN

071005201117
3025 Commercial Ave
GLACIERS EDGE LLC
SUITE 101

071005201068
529 McCormick Ave