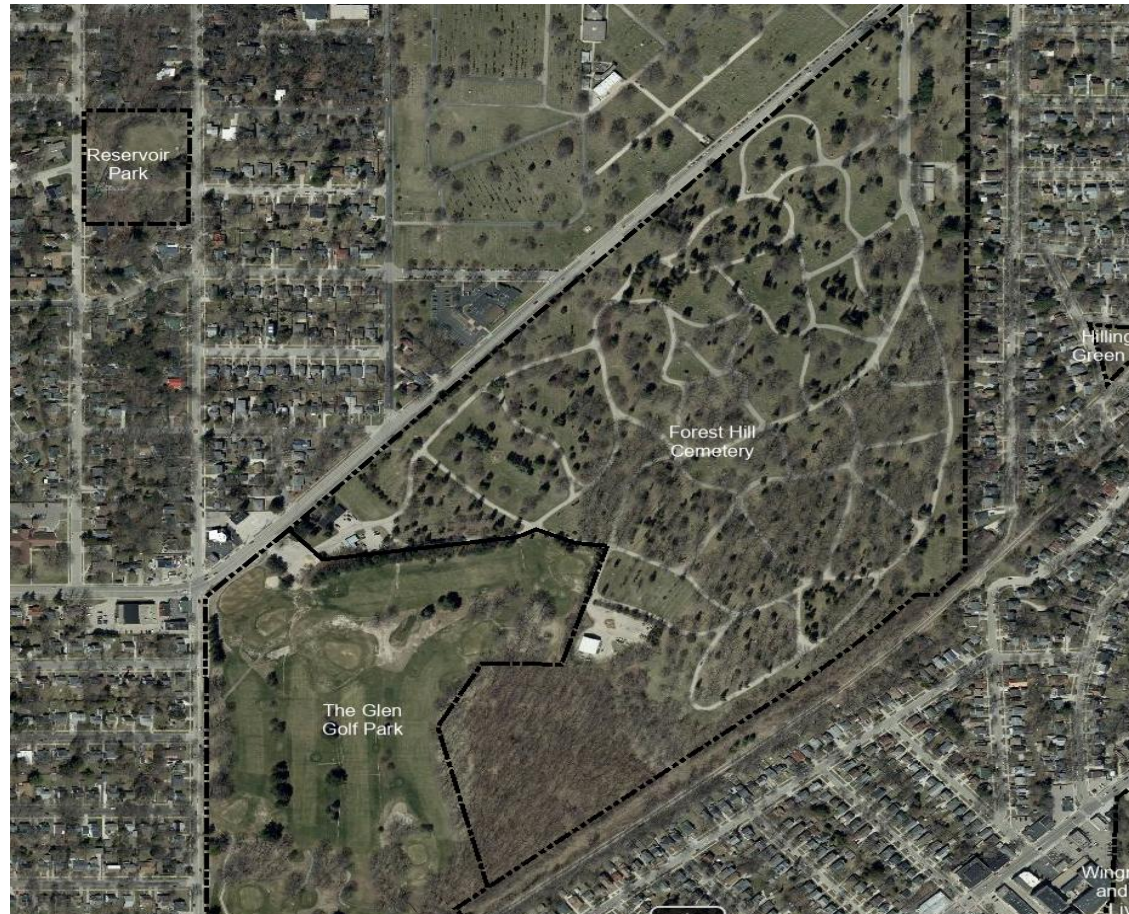


## **Forest Hill Cemetery Proposed Fees**

### Facilities Programs and Fees Subcommittee

# Forest Hill Cemetery



## 2026 Forest Hill Cemetery Fees

Burial Lots (Includes 40% PC)	Cost
Resident Single	\$ 2,163
Resident 2 Grave	\$ 4,307
Resident 3 Grave	\$ 6,450
Resident 4 Grave	\$ 8,604
Resident 6 Grave	\$ 12,906
Resident 8 Grave	\$ 17,213
Non-Resident Single	\$ 2,822
Non-Resident 2 Grave	\$ 5,639
Non-Resident 3 Grave	\$ 8,456
Non-Resident 4 Grave	\$ 11,284
Non-Resident 6 Grave	\$ 16,922
Non-Resident 8 Grave	\$ 22,559
Cremation Lot, Resident	\$ 1,282
Cremation Lot, Non-Resident	\$ 1,703
Infant Lot, Resident	\$ 610
Infant Lot, Non-Resident	\$ 918
Memorial Lot, Resident	\$ 764
Memorial Lot, Non-Resident	\$ 1,093

Cemetery Services	Cost
Stake Only	\$ 119
Restake	\$ 185
Install Government Granite	\$ 216
Install Government Upright Or Bronze	\$ 355
Quitclaim Processing / Lot Exchange	\$ 216
Special, Non-Perpetual Care Maintenance	\$ 133

Mausoleum Crypts**	Cost
Corridor Single	\$ 6,578
Corridor Single, End Room	\$ 7,025
Chapel, Hall	\$ 8,693
Chapel, Sanctum	\$ 8,917
Chapel, Couch Room	\$ 9,368
Garden True Companion	\$ 8,693
Garden Single	\$ 4,456

Mausoleum Niches	Cost
Apostle's Rest	\$ 927
Marble Front (Incl. Urn)	\$ 1,082
Glass Front (Incl. Inurnment, Mon-Fri)	\$ 1,273
Corridor Ends	\$ 2,068
Corridor End-Window Seat	\$ 3,401
Tall Urn, Glass Front	\$ 3,401
Garden Family (Up To 18)**	\$ 6,020
Garden Nook, 1 Or 2 Urns (Incl.)	\$ 2,132
Niche Plate	\$ 71
Lettering	\$ 49

### \*All Interment/Entombment Costs Include \$35 Admin Fee\*

**All interments/entombments must be scheduled through our office at least <u>2 business days (M-F) in advance</u> of the interment/entombment date.**	
Late arrival surcharge for interments/entombments - 15 minute grace period then \$35 per 15 min.	
*No services 2 hours before sunset or after 4PM, whichever is earlier.	
*Niche or crypt buy-back is purchase price less 10%.	
*Removal of crypt/niche identification at cost plus 10%.	
**No Garden Family Mausoleum Niches currently available.	
***Prices of all crypts include up to 25 engraved characters.	

Interment Services Monday - Friday	8AM-2PM	2PM-4PM	4PM-5PM
Adult Grave (Over 36")	\$ 1,230	\$ 1,735	\$ 2,141
Cremains (To 18")	\$ 830	\$ 1,096	\$ 1,637
Child or Small Grave (To 36")	\$ 508	\$ 789	\$ 1,160
Infant	No Charge	\$ 766	\$ 1,149
Open Weekend & Close Wkday, Full-size	\$ 1,683		

Interment Services Saturday, Sunday	8AM-12PM	12PM-2PM	2PM-4PM
Adult Grave (Over 36")	\$ 1,709	\$ 2,157	\$ 2,929
Cremains	\$ 1,096	\$ 1,353	\$ 2,157
Infant, Child, or Small Grave (To 36")	\$ 761	\$ 1,065	\$ 1,709
Both Open & Close On Weekend	\$ 2,466	\$ 3,048	\$ 3,661

Entombment Services Monday-Friday	8AM-2PM	2PM-4PM	4PM-5PM
Casket Entombment	\$ 1,158	\$ 1,678	\$ 2,044
Urn Entombment	\$ 483	\$ 725	\$ 998
Unseal Crypt To Entomb Urn (Additional Charge)	\$ 293	Only Available Until 2PM	

Entombment Services Saturday, Sunday	8AM-12PM	12PM-2PM	2PM-4PM
Casket Entombment	\$ 1,673	\$ 2,157	\$ 2,723
Urn Entombment	\$ 730	\$ 1,065	\$ 1,302

Miscellaneous Interment/Entombment Services	Cost
Disinter Adult	\$ 2,177
Disinter Cremains	\$ 900
Disinter Infant Or Limb (To 36")	\$ 1,323
Locate & Hold Urn For Reinterment	\$ 282
Disentomb Casket	\$ 1,642
Disentomb Urn	\$ 437
Winter Burial Of Cremains, Additional Charge	\$ 447
Pallbearer Surcharge	\$ 159
Bronze Urns (No Admin Fee)	\$ 82
Transferring Ashes To Another Urn (No Admin Fee)	\$ 56
Same Day Interment/Entombment (M-F, 8AM-2PM), Additional Charge	\$ 694

Standard

# Services and Fees - 2026

- All fees will increase by 3%
- Labor, supplies, and services costs have all increased
- Administrative fee will increase from \$30 to \$40 for annual software license fee increases.

# Added Revenue

Year	Total Revenue		Perpetual Care	
2022	\$	382,076.00	\$	79,603.00
2023	\$	325,743.00	\$	95,800.00
2024	\$	286,338.00	\$	82,132.00
<b>Average</b>	\$	331,385.67	\$	85,845.00
<b>3% Increase</b>	\$	341,327.24	\$	88,420.35
<b>Additional Revenue</b>	\$	9,941.57	\$	2,575.35

## **Forest Hill Cemetery Proposed Fees**

### Facilities Programs and Fees Subcommittee