



Transmittal

5100 Eastpark Boulevard, Suite 310, Madison, WI 53718

PROJECT: Ryan Reda - Home Addition -
Madison, WI
18-037

DATE: 7/7/2023

SUBJECT: 719 Jenifer st

TRANSMITTAL ID: 00008

PURPOSE: Other

VIA: Info Exchange

FROM

NAME	COMPANY	EMAIL	PHONE
Bradley Servin 5100 Eastpark Boulevard, Suite 310 Madison, WI 53718	Architectural Design Consultants, Inc.	b.servin@adcidesign.com	608.254.6181

TO

NAME	COMPANY	EMAIL	PHONE
Heather Bailey United States	City of Madison	hbailey@cityofmadison.com	
City of Madison Landmarks United States		landmarkscommission@cityof madison.com	

REMARKS: Heather,

Attached are updated plans and final product information you are looking for to issue the Certificate of Appropriateness.

Let me know if you have any further questions.

DESCRIPTION OF CONTENTS

QTY	DATED	TITLE	NOTES
1	7/7/2023	Cedar Shingles.pdf	
1	7/7/2023	IKO Cambridge Shingle.pdf	
1	7/7/2023	Landmarks Commission Submittal07.07.2023.pdf	
1	7/7/2023	Larson Screen Door.pdf	
1	7/7/2023	Pella Entry Doors.pdf	

COPIES:

Mark Hazelbaker
Ryan Reda

Transmittal

DATE: 7/7/2023
TRANSMITTAL ID: 00008

Hayden Frank
Scott Frank

(Oak Park Place)
(Alternative Continuum of Care, LLC)

16" Eastern White Cedar Undercourse Shingles (12.5 sq. ft.)

Model Number: BAU1032 | Menards® SKU: 1071011



EVERYDAY LOW PRICE

\$16.97

11% MAIL-IN REBATE

Good Through 7/9/23


\$1.87

FINAL PRICE

\$15¹⁰

/bndl


- You Save \$1.87 with Mail-In Rebate
- Covers 12.5 square feet at a 5" exposure
 - Utility grade
 - Also ideal as construction shims
 - Not recommended for finish application on roofing or siding
- [View More Information >](#)



Pick Up At Store

49 In-Stock at [BARABOO](#)

[Check Another Store for Availability.](#)



Shipping & Delivery

Available

Description & Documents

Cedar undercourse shingles from Maibec are great for creating interior decor that has rustic appeal with the warmth of real wood. These shingles can be used for shimming or for sidewalls of secondary buildings such as sheds, playhouses and barns.


Brand Name: **Maibec**

- Features**
- Covers 12.5 square feet at a 5" exposure
 - Utility grade
 - Also ideal as construction shims
 - Not recommended for finish application on roofing or siding

Specifications

Product Type	Cedar Shakes	Thickness	3/8
Material	Wood	Overall Width	12 inch
Overall Length	16 inch	Color/Finish	Cedar
Coverage Area	12.5 square foot	Shipping Dimensions	22.50 H x 19.25 W x 3.50 D
Shipping Weight	20.0 lbs	Return Policy	Regular Return (view Return Policy).

Please Note: Prices, promotions, styles and availability may vary by store and online. Inventory is sold and received continuously throughout the day; therefore, the quantity shown may not be available when you get to the store. This inventory may include a store display unit. Online orders and products purchased in-store qualify for rebate redemption. Mail-in Rebate is in the form of merchandise credit check, valid in-store only. Merchandise credit check is not valid towards purchases made on MENARDS.COM®. By submitting this rebate form, you agree to resolve any disputes related to rebate redemption by binding arbitration and you waive any right to file or participate in a class action. Terms and conditions available at [www.rebateinternational.com®](#)



To see our special offers and sales, please enter your email address today to get immediate access! We value your privacy and trust at Menards. We will not distribute your information to any other company. View our [Privacy Policy](#). This site is protected by reCAPTCHA and the Google [Privacy Policy](#) and [Terms of Service](#) apply.

☐ email@address.com

Zip Code

Close

Sign Up



Cambridge®

IKO.COM



The Trusted Solution
for a Beautiful Roof.

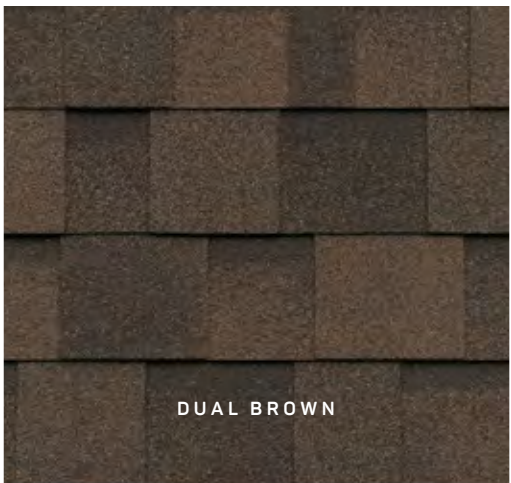
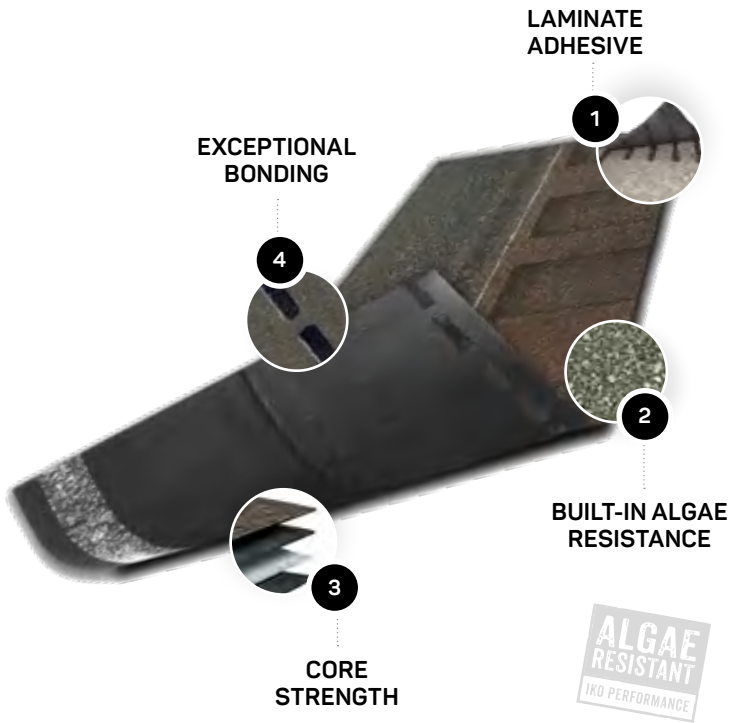


BEAUTY You Can See. QUALITY You Can Feel.

NOW THAT IT'S TIME TO REPLACE YOUR ROOF, WHY TAKE ANYTHING FOR GRANTED? We never do. Since 1951, IKO has been protecting American homes and families just like yours against the elements.

Whether it's elegant and sophisticated or laid-back and casual, or somewhere in-between, **IKO Cambridge® Architectural shingles** come in a wide range of stunning color blends to express your personality, reflect your taste and potentially boost your home's resale value too.

Their modern, laminated two-piece design provides the depth, dimension and texture of genuine wood shakes for an upscale appearance without the upscale price tag. Now unleash your exterior designer and dress up your home with an exciting new look, for less than you might expect.



PERFORMANCE You Can Trust.

- 1

LAMINATE ADHESIVE. Five strips of our tough, construction-grade adhesive are used to laminate the shim to the tooth.
- 2

BUILT-IN ALGAE RESISTANCE. Special colorfast granules embedded in the shingles’ surface help inhibit the growth of blue-green algae that can cause unattractive black stains, streaks and discoloration.
- 3

CORE STRENGTH. Our resilient fiberglass mat is coated top and bottom with weathering asphalt, then surfaced with colored granules. It’s heavy-duty for exceptional durability and structural integrity.
- 4

EXCEPTIONAL BONDING. IKO’s FastLock® sealant on the shingles’ bottom edge gets extra-tacky when activated by the sun’s heat. This creates a strong bond to help ensure maximum protection against wind uplift, blow-off and water penetration.

THE IKO ADVANTAGE

Limited Warranty ¹	Limited Lifetime ³
Iron Clad Protection ¹	10 Years (U.S. only)
Limited Wind Warranty ¹	110 mph (177 km/h)
Limited High-Wind Warranty Upgrade ^{1,2}	130 mph (210 km/h)
Blue-Green Algae Resistant ¹	Yes

PRODUCT SPECIFICATIONS⁴

Length	40 7/8 in (1038 mm)
Width	13 3/4 in (349 mm)
Exposure	5 7/8 in (149 mm)
Coverage per Bundle	33 1/3 ft ² (3.1 m ²)
(3 bundles = 1 full square = 100 sq ft coverage)	

STANDARDS⁵

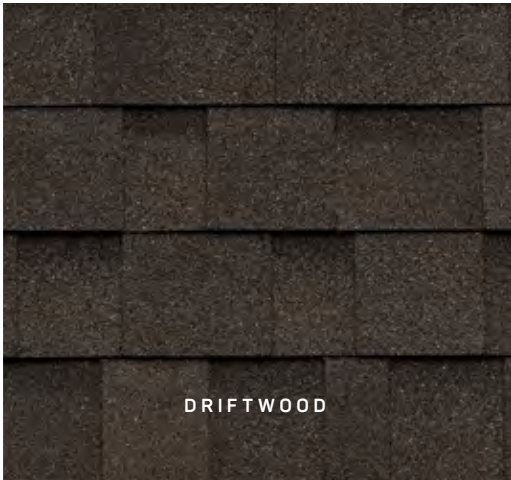
ASTM D3462, ASTM D3018, ASTM D3161 – Class F,
ASTM D7158 – Class H, ASTM E108/UL 790 – Class A.



HARVARD SLATE



EARTHTONE CEDAR



DRIFTWOOD



DOVE WHITE
AVAILABLE IN SELECT MARKETS

IMPORTANT! To ensure complete satisfaction, please view several full-size shingles and an actual roof installation prior to final color selection as the shingle swatches and photography shown online, in our brochures and in our **ROOFViewer®** tool may not accurately reflect shingle color and do not fully represent the entire color blend range, nor the impact of sunlight.

Note: Product and color availability may vary by region. Products with Miami Dade NOA, FBC product approval and Texas Department of Insurance listings are available. Please contact IKO for details. ¹See Limited Warranty at IKO.com for complete terms, conditions, restrictions and application requirements. Shingles must be applied in accordance with application instructions and local building code requirements. ²High-wind application is required. ³“Lifetime” means the period of time commencing on the date of the completion of the installation of the shingles on the building, and continuing so long as the owner owns the building on which the shingles were installed. ⁴All values shown are approximate. ⁵Products are developed with reference to these standards.

Shingles are your home’s first line of defense, but they protect, perform and look their best installed with the **IKO Proformax Integrated Roofing Accessories** shown below.



DECK PROTECTION	SYNTHETIC UNDERLAYMENT	ROOF STARTERS	CAPPING SHINGLES
<p>1. IKO GoldSeam[™] Roof Sealing Tape</p> <p>1a. Apply where the fascia and eaves meet.</p> <p>1b. Apply over seams when sealing the deck using synthetic underlayment.</p> <p>StormShield[®]</p> <p>1c. Apply under shingled roofs to help prevent water infiltration due to ice dams and wind-driven rain.</p>	<p>2. Stormtite[™]</p> <p>It's IKO's economical synthetic underlayment choice. Stronger than conventional felts, Stormtite installs easily, even in cool weather, due to its light weight. Stormtite is the perfect combination of strength and flexibility.</p>	<p>3. Leading Edge Plus[™] or EdgeSeal[™]</p> <p>Apply starter shingles with IKO's own high-strength thermally activated sealant or use the double-sided starter roll at eaves and rakes to help ensure wind resistance at that critical first course of shingles.</p>	<p>4. Hip & Ridge 12[™]</p> <p>These capping shingles are available in colors that pair with every Cambridge color. Installation is easy, just separate the tapered pieces along the perforation, bend and nail in place. No waste.</p>

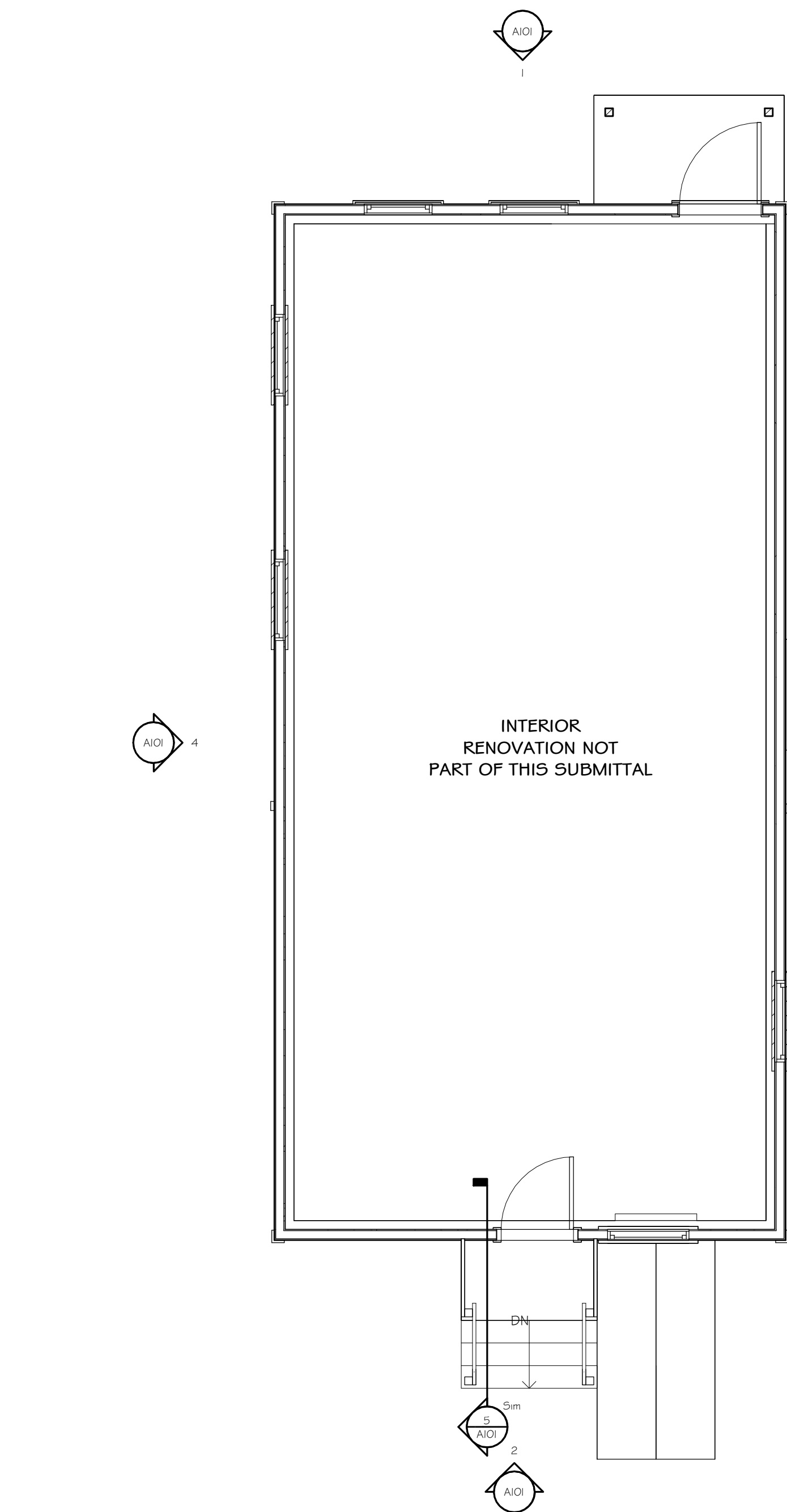


To find out more about Cambridge[®] Architectural shingles or additional IKO products, please talk to an IKO sales representative or a professional roofing contractor, or contact IKO directly.

United States 1-888-IKO-ROOF (1-888-456-7663)
Canada 1-855-IKO-ROOF (1-855-456-7663)

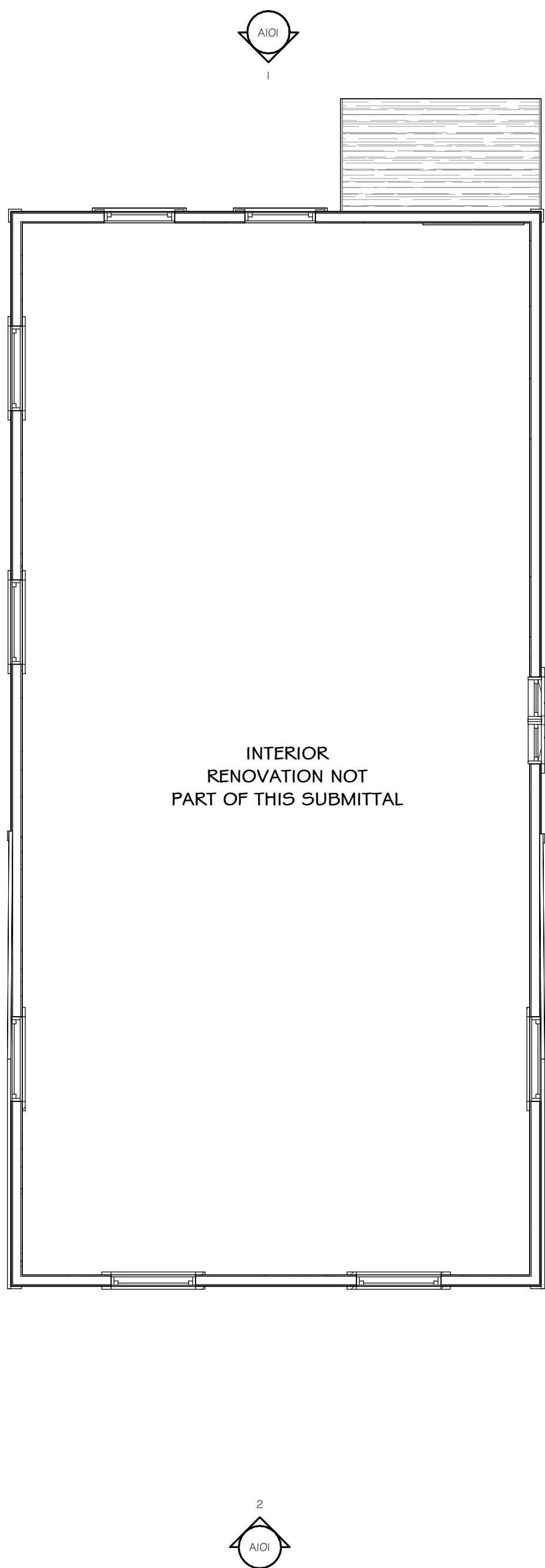
The information in this literature is subject to change without notice. We assume no responsibility for errors that may appear in this literature.





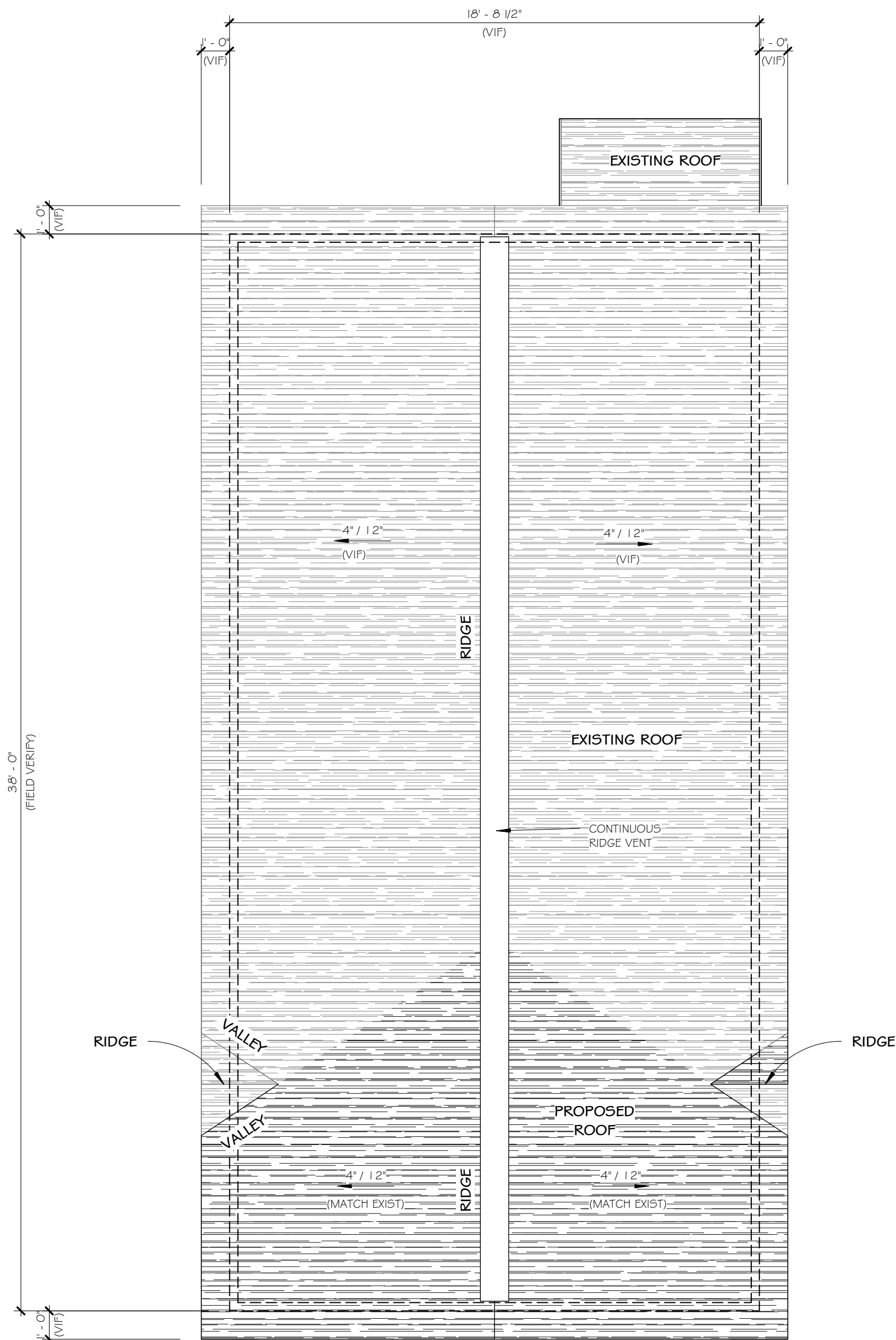
1 FIRST FLOOR PLAN

SCALE: 1/4" = 1'-0"



2 SECOND FLOOR PLAN

SCALE: 1/4" = 1'-0"

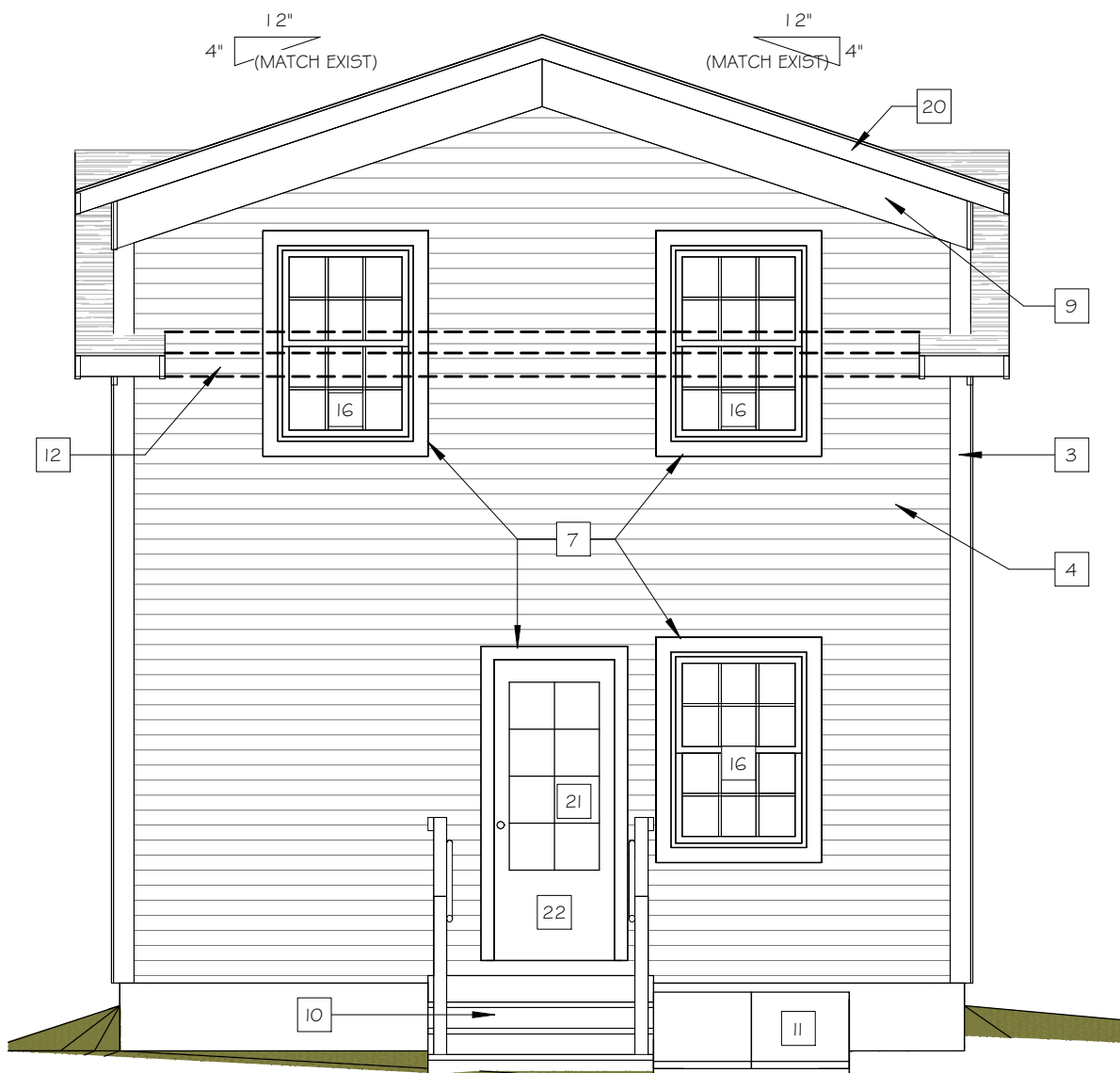


3 ROOF PLAN

SCALE: 1/4" = 1'-0"



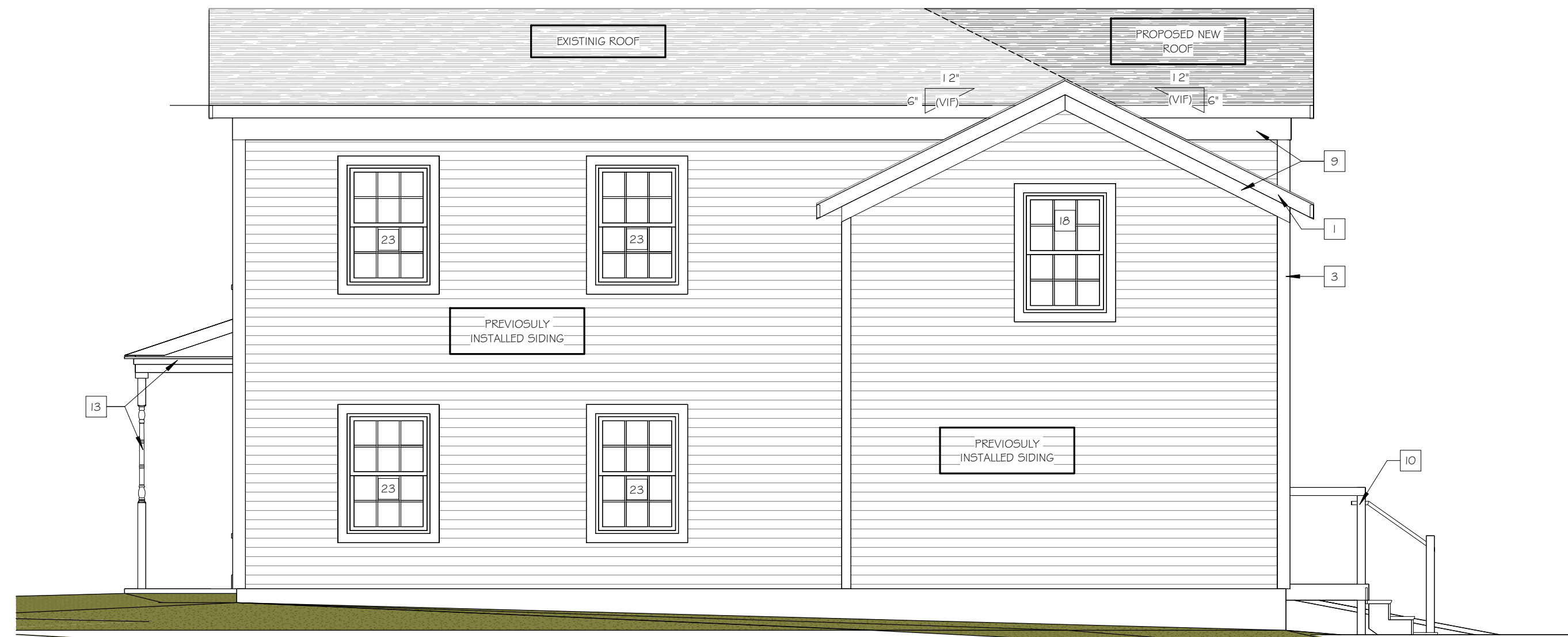
1 EXISTING NORTH ELEVATION
SCALE: 1/4" = 1'-0"



2 EXISTING SOUTH ELEVATION
SCALE: 1/4" = 1'-0"

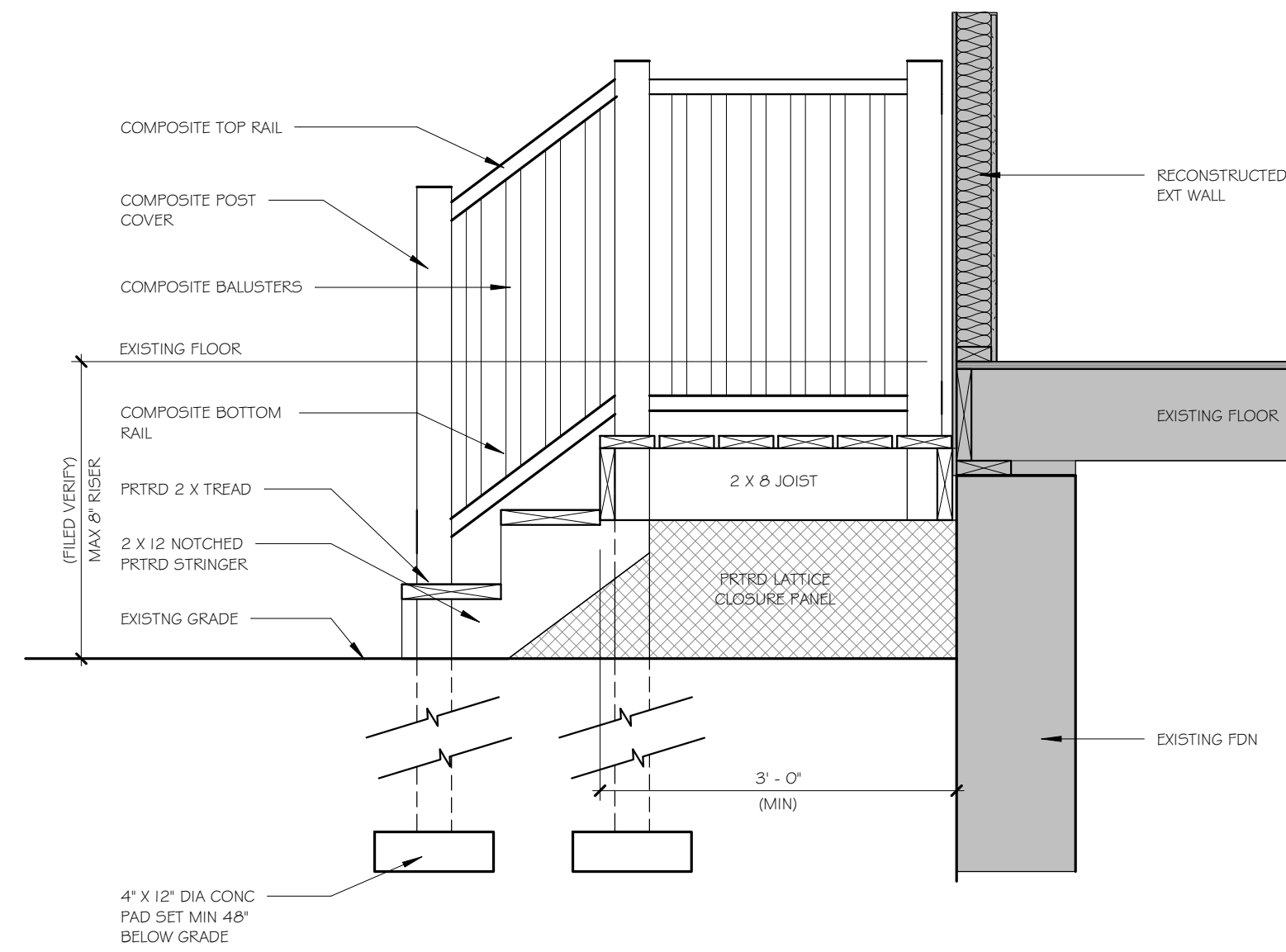


3 EXISTING EAST ELEVATION
SCALE: 1/4" = 1'-0"



4 EXISTING WEST ELEVATION
SCALE: 1/4" = 1'-0"

EXTERIOR FINISH SCHEDULE			
BOX	MATERIAL	MANUFACTURER / STYLE	NOTES
1	EXISTING WOOD FASCIA	N/A	SCRAPE & PAINT / REPLACE ROTTED BOARDS IN KIND AS REQUIRED
2	ASPHALT SHINGLES	IKO CAMBRIDGE ARCHITECTURAL SHINGLE	COLOR TO MATCH EXISTING
3	COMPOSITE TRIM BD	LPSMARTSIDE / 540 SERIES SMOOTH TRIM	MATCH EXISTING DIMENSION & PROFILE
4	ENGINEERED WOOD SIDING	LPSMARTSIDE / SMOOTH LAP SIDING	FINISH INSTALLTION
5	EXISTING FRIEZE BD	N/A	SCRAPE & PAINT / REPLACE ROTTED BOARDS IN KIND AS REQUIRED
6	EXISTING WINDOW	N/A	REFURBISH EXISTING WINDOW FRAME, SASH, SILL & TRIM
7	COMPOSITE WINDOW TRIM	LPSMARTIDE / 540 SERIES SMOOTH TRIM	MATCH EXISTING DIMENSIONS AND PROFILE
8	EXISTING CORBEL	N/A	SCRAPE & PAINT / REPLACE ROTTED CORBEL IN KIND AS REQUIRED
9	NEW FRIEZE BD	LPSMARTSIDE / 540 SERIES SMOOTH TRIM	COMPOSITE BD - MATCH EXISTING DIMENSIONS AND PROFILE
10	WOOD PORCH	N/A	REBUILDING EXISTING WOOD PORCH AND RAILING
11	BASEMENT ACCESS STAIR	N/A	REMOVE AND RECONSTRUCT BASEMENT ACCESS STAIR AS REQUIRED FOR WATER TIGHT SEAL
12	REMOVE EXISTING OVERHANG	N/A	---
13	EXISTING PORCH	N/A	REMOVE AND REPLACED ROTTED STRUCTURE AS REQUIRED - REPLACE WITH IN KIND MATERIALS - MATCH EXISTING DIMENSIONS AND PROFILES
14	ENTRY DOOR	N/A	REPAIR IN KIND
15	KICK BD	N/A	REMOVE AND REPLACE IN KIND
16	NEW DOUBLE HUNG WINDOW	SIERRA PACIFIC / H3 ALUMINUM GLAD DOUBLE HUNG	36" x 52" WOOD FRAMED WINDOW WITH VINYL CLAD EXTERIOR AND SIMULATED DIVIDED LITE
17	FASCIA	LPSMARTSIDE / 540 SERIES SMOOTH TRIM	---
18	PREVIOUSLY INSTALLED WINDOW	SIERRA PACIFIC / H3 ALUMINUM CLAD CASEMENT	--
19	FRIEZE BOARD	LPSMARTSIDE / 540 SERIES SMOOTH TRIM	FINISH INSTALLTION
20	NEW FASCIA	LPSMARTSIDE / 540 SERIES SMOOTH TRIM	FINISH INSTALLTION
21	REAR ENTRY DOOR	PELLA TRADITIONAL WOOD ENTRY DOOR	PELLA WOOD ENTRY DOOR- CRAFTSMAN STYLE, SIMULATED DIVIDED LIGHT 1-1/8" PVC PERMANENTLY BONDED TO INTERIOR AND EXTERIOR OF GLAZING
22	ALUMINUM SCREEN DOOR	LARSON SCREEN DOOR	LARSON FULLVIEW SCREEN DOOR MODEL 149FVE- WHITE
23	PREVIOUSLY INSTALLED WINDOW	SIERRA PACIFIC / H3 ALUMINUM CLAD DOUBLE HUNG	--
24	CEDAR SHINGLE	EASTERN WHITE CEDAR SHINGLE	--



5 STAIR DETAIL
SCALE: 3/4" = 1'-0"



2018 PLAN NORTH ELEVATION



2018 PLAN WEST ELEVATION



2018 PLAN SOUTH ELEVATION



2023 PLAN NORTH ELEVATION



2023 PLAN WEST ELEVATION



2023 PLAN SOUTH ELEVATION



2023 PLAN EAST ELEVATION



Model(s):
149FVE

Build Your Door

Color:



Handle Design:



Handle:



Glass: LOW-E

Door Width:

Standard door width fits

Door Height:

*Standard door height fits





Pella® Entry Doors:

Fiberglass and Steel



Fiberglass

High performance. Low maintenance.

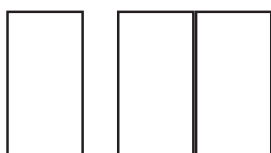
- Grained fiberglass has the warm, rich look of wood.
- Dent-resistant and won't rust or corrode.
- Choose from Mahogany-grain, Oak-grain, Fir-grain and Smooth fiberglass.

Steel

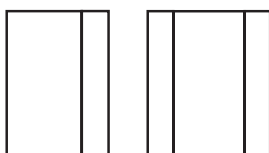
Naturally strong and durable.

- Steel panels provide a quality appearance to any home that's easy to maintain.
- Smooth surface creates even color when painted.
- Steel provides extra durability.

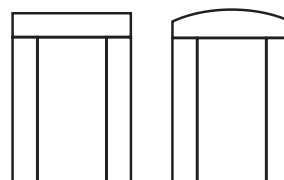
Single and Double Doors₁



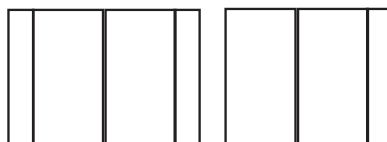
Single Door with Sidelights₁



Single Door with Sidelights and Transom₁



Double Door with Sidelights₁



Pella® entry doors are backed by one of the best warranties in the business.*

Pella entry door fiberglass systems with composite exterior frames are backed by the Pella Limited Lifetime Warranty.*

The Pella 20/10 Limited Warranty is the standard warranty for all steel and wood entry doors from Pella.*

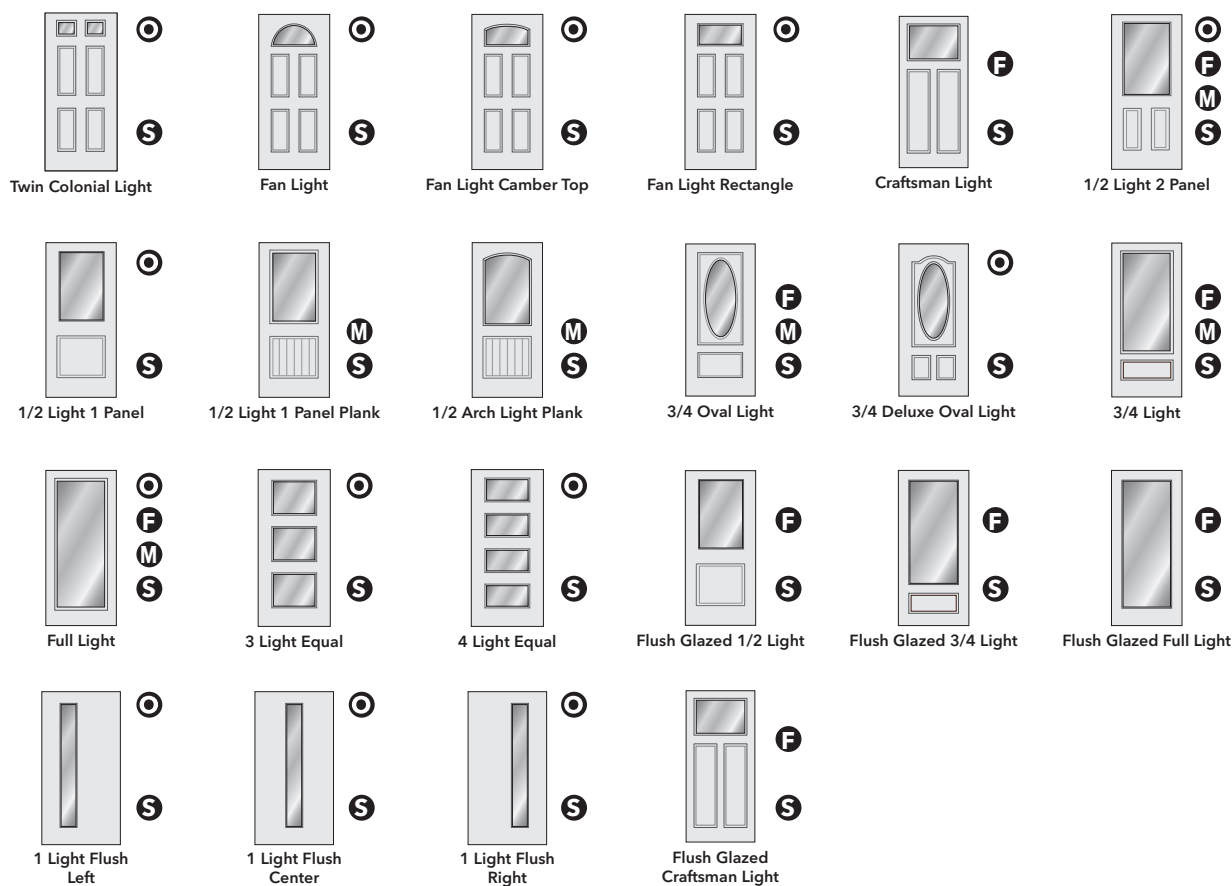
*See written limited warranties for complete details, including exceptions and limitations, at pella.com/warranty or contact Pella Customer Service.

(1) Configuration only available with fiberglass.

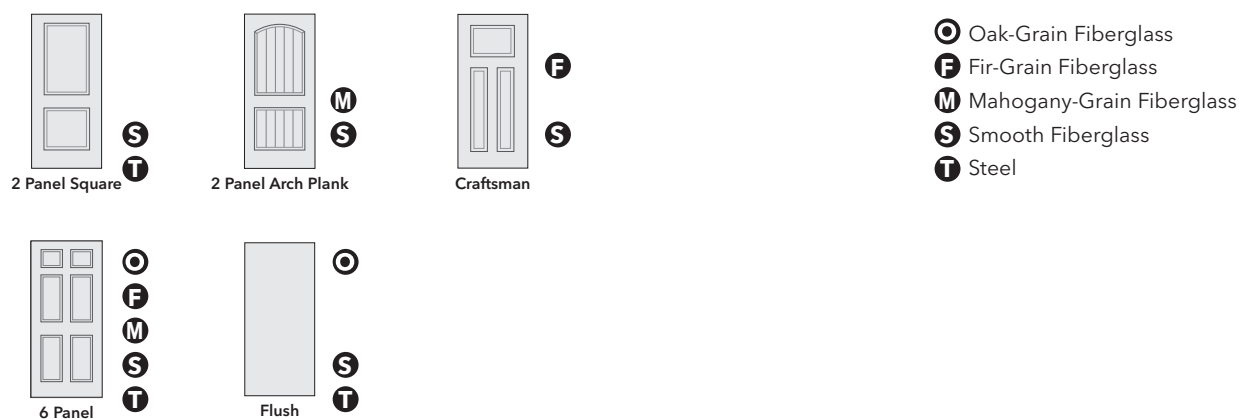
Brand Overview

Panel Options

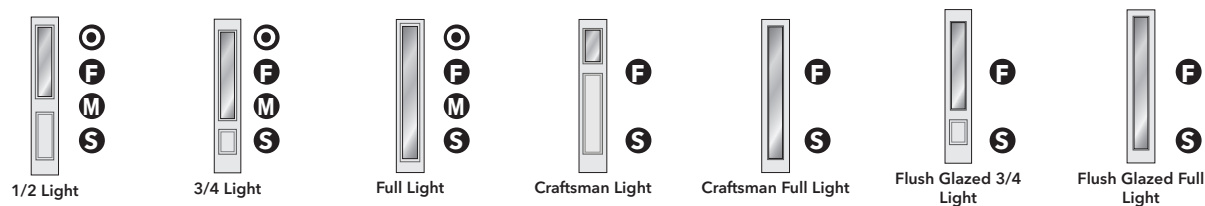
Glass Panels: Fiberglass



Solid Panels: Fiberglass or Steel



Sidelights: Fiberglass



Glazing Options

Low-E Clear Glass



Textured and Obscure Glass



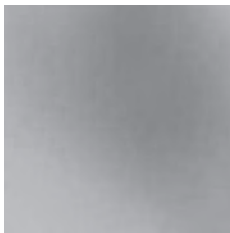
Chord | Textured



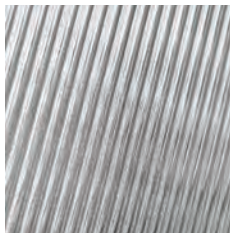
Double Water | Textured



Pear | Obscure



Satin Etch | Obscure



Narrow Reed | Textured

Glass Privacy Ratings

	Privacy Rating
Low-E	
Low-E Clear	1
Textured and Obscure	
Chord	9
Double Water	9
Pear	9
Satin Etch	9
Narrow Reed	7
Decorative Glass	
Avoca	8
Huxley	8
Lucas	8
Tune	7
Danbury	9
Lovilia	9

Decorative Glass Collections

Traditional



Avoca
Platinum Caming



Transitional



Huxley
Black Patina Caming

Craftsman



Lucas
Platinum Caming



Tune
Black Patina Caming



Contemporary (Wrought Iron between glass)



Danbury
Black Wrought Iron



Lovilia
Black Wrought Iron

Because of printing limitations, actual colors may vary slightly from those shown.

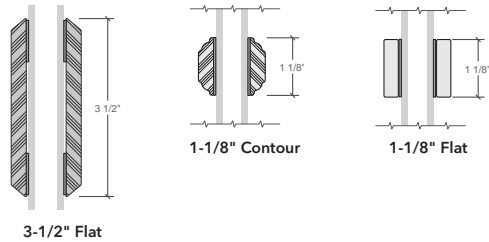
Indicates impact-resistant glazing available.

Brand Overview

Grille Profiles

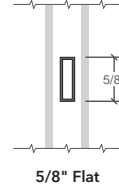
For grille size and pattern availability contact your local Pella sales representative.

Simulated-Divided-Light Grilles

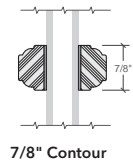


SDL grilles available for Flush Glazed panels only

Grilles-Between-the-Glass

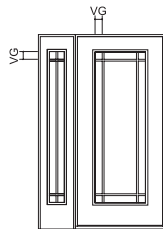


Fixed Grilles



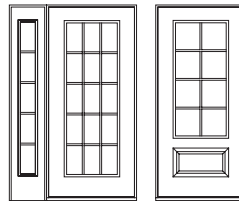
Grille Patterns

9-Light Prairie

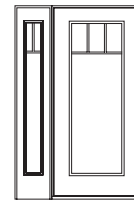


VG = Visible Glass
Standard corner light
dimension:
GBG = 3-15/16" VG
1-1/8" SDL = 2.930" VG

Traditional



Top Row



All doors will be 2 or 3 lights wide.

For size and pattern availability contact your local Pella sales representative.

Simulated-Divided Light (1-1/8")

(Flush Glazed Panels Only)

Traditional Pattern Lites		6' 8"		8' 0"	
		Lites Wide	Lites High	Lites Wide	Lites High
Door	Craftsman Light	2	2	2	2
	Flush Glazed 1/2 Light	2 or 3	2 or 3	-	-
	Flush Glazed 3/4 Light	2	2, 3 or 4	2	2, 3 or 4
	Flush Glazed Full Light	2	2, 4 or 5	2	2, 4 or 5
Sidelight	Craftsman Light	1	2	1	2
	Flush Glazed 3/4 Light	1	2, 3 or 4	1	2, 3 or 4
	Flush Glazed Full Light	1	3, 4 or 5	1	3, 4 or 5

Grilles-Between-the-Glass

Traditional Pattern Lites		6' 8"		8' 0"	
		Lites Wide	Lites High	Lites Wide	Lites High
Door	Craftsman Light	2 or 3	1 or 2	2 or 3	1 or 2
	Flush Glazed 1/2 Light	2 or 3	2 or 3	2 or 3	2 or 3
	Flush Glazed 3/4 Light	2	2, 3 or 4	2	2, 3 or 4
	Flush Glazed Full Light	2 or 3	2, 4 or 5	2 or 3	2, 4, 5 or 6
Sidelight	Craftsman Light	1	2	1	2
	Flush Glazed 3/4 Light	1	2, 3 or 4	1	2, 3 or 4
	Flush Glazed Full Light	1	2, 4 or 5	1	2, 4, 5 or 6

Fixed

Traditional Pattern Lites		6' 8"		8' 0"	
		Lites Wide	Lites High	Lites Wide	Lites High
Door	Fan Light	5	-	5	-
	Craftsman Light	3	2 or 1	3	2 or 1
	1/2 Light	3	3	-	-
	Full Light	2 or 3	5	-	-
Sidelight	1/2 Light	1	3	-	-
	Full Light	1	5	-	-

Blinds-Between-the-Glass



Cordless white blinds offer light and privacy control and are protected between two panes of Low-E insulating glass so they don't need cleaning.

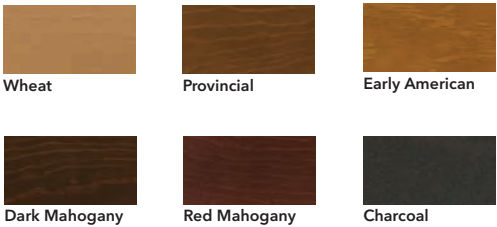
Pella® Entry Doors Prefinished Fiberglass or Steel

All paints and stains are available on the exterior and interior of a panel or sidelight, as well as the frame.*

Fiberglass and Steel Factory Prefinish Paint



Fiberglass Factory Prefinish Stain



*Frame finish is monotone.

NOTE: The rich, distinctive look of our factory-prefinished doors is achieved through hand-finishing. Some color variation is expected.

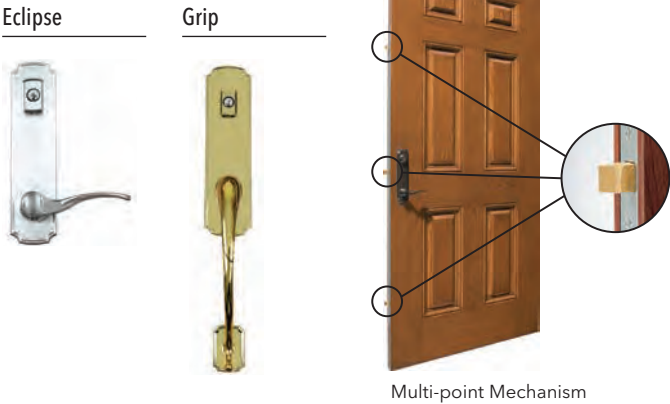
Because of printing limitations, actual colors may vary slightly from those shown.

Brand Overview

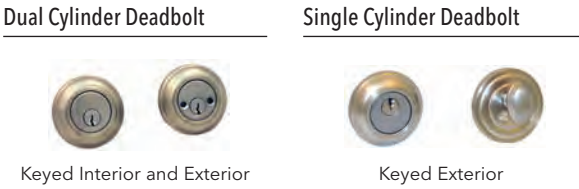
Handle Sets








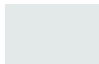


Multi-point Lock Exterior Hardware₁



Optional Deadbolts



Hardware Finishes

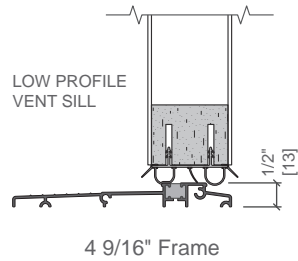
	<div>         </div>							
HARDWARE	Satin Brass	Distressed Bronze	Distressed Nickel	Matte Black	Bright Brass	Polished Chrome	Satin Nickel	Oil-Rubbed Bronze
Standard					•		•	•
Napa / Del Mar	•			•			•	•
La Jolla / Seattle	•			•		•	•	
Longview / Elkhorn		•	•					
Eclipse / Grip					•		•	
Deadbolts					•		•	•

Additional Decorative Accents

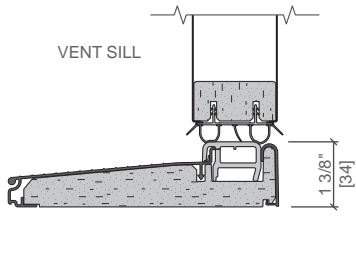
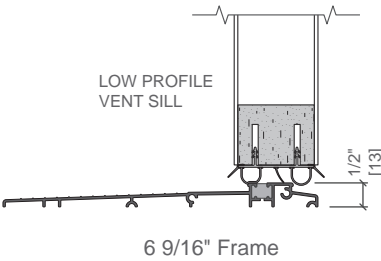


(1) Not available on steel panels.
 (2) Also available with Multipoint Lock.

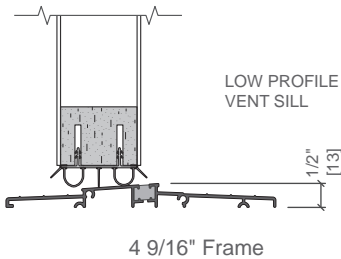
In-Swing Doors - Fiberglass or Steel



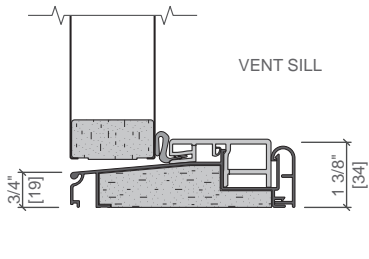
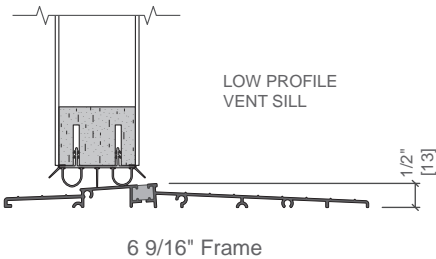
5-1/4" Frame Depth also available.



Out-Swing Doors - Fiberglass or Steel



5-1/4" Frame Depth also available.



Sizes & Performance

Performance Summary	Door Type - Standard Sill (Single Unit)		Fiberglass / Steel	
			Standard	Impact
	In-Swing Door	Design Pressure	35 - 50	40 - 50
	Out-Swing Door	Design Pressure	35 - 50	40 - 50

Thermal Performance	Panel Category (Applicable to)	U-Factor	SHGC	VLT %	Energy Star® Capable
Fiberglass Panels (1" Insulating glass)	Full Light Flush Glazed Full Light 3/4 Light Flush Glazed 3/4 Light	0.25 - 0.36	0.12 - 0.30	0.18 - 0.31	N, NC, SC, S
	3/4 Light Flush Glazed 3/4 Light 3 Light Equal 1/2 Light 1 Panel 1/2 Light 1 Panel Plank 1/2 Light 2 Panel Flush Glazed 1/2 Light	0.22 - 0.31	0.09 - 0.23	0.16 - 0.24	N, NC, SC, S
	Flush Glazed 3/4 Light 3/4 Deluxe Oval Light 3/4 Oval Light 4 Light Equal 1/2 Arch Light Plank 1/2 Light 1 Panel 1/2 Light 1 Panel Plank 1/2 Light 2 Panel Flush Glazed 1/2 Light	0.21 - 0.27	0.07 - 0.17	0.12 - 0.18	N, NC, SC, S
	Craftsman Light Fan Light Fan Light Camber Top Fan Light Rectangle Twin Colonial Light	0.19 - 0.22	0.07 - 0.10	0.07 - 0.10	N, NC, SC, S

Performance values do not include the performance of handles or glass seals. Published performance data is for single unit only.