



Madison, Wisconsin

CITY OF MADISON

CITY ENGINEERING DIVISION

DEPARTMENT OF PUBLIC WORKS

PLAN OF PROPOSED IMPROVEMENT

EAST TOWNE POND

PUBLIC IMPROVEMENT PROJECT
APPROVED

APPROVED DATE
AUGUST 1, 2022

BY THE COMMON COUNCIL
OF MADISON, WISCONSIN

PUBLIC IMPROVEMENT DESIGN
APPROVED BY:

City Engineer

Date

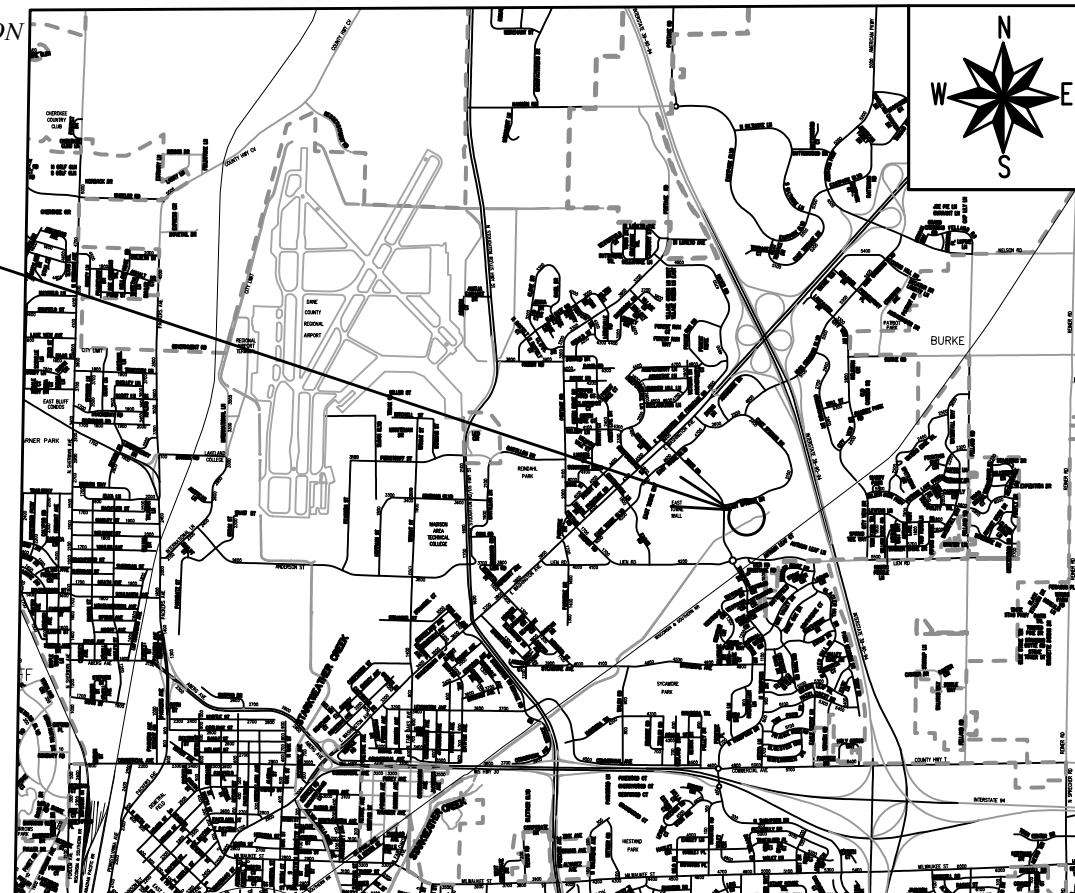
STORM SEWER
DESIGNED BY:

INDEX OF SHEETS

SHEET NO. 1	COVER SHEET
SHEET NO. EX1	EXISTING CONDITIONS
SHEET NO. S1	OVERALL SITE LAYOUT
SHEET NO. CP1	CLEARING PLAN
SHEET NO. GP1	GRADING & EROSION CONTROL PLAN-NE DETENTION AREA
SHEET NO. GP2	GRADING & EROSION CONTROL PLAN - NW WET STORAGE AREA
SHEET NO. U1	UTILITY PLAN
SHEET NO. U2	STORMSEWER SCHEDULE
SHEET NO. VP1	VEGETATION PLAN
SHEET NO. D1	NE DET -FLOATABLE REMOVAL DETAIL
SHEET NO. D2	NW WET STORAGE-FLOATABLE REMOVAL DETAIL
SHEET NO. D3	NE DETENTION/NW WET STORAGE CROSS SECTION
SHEET NO. P1	NE DET MAINTENANCE ACCESS ROAD P&P
SHEET NO. P2	NW MAINTENANCE ACCESS ROAD P&P

CITY PROJECT NO. 11066
CONTRACT NO. 9437

PROJECT
LOCATION

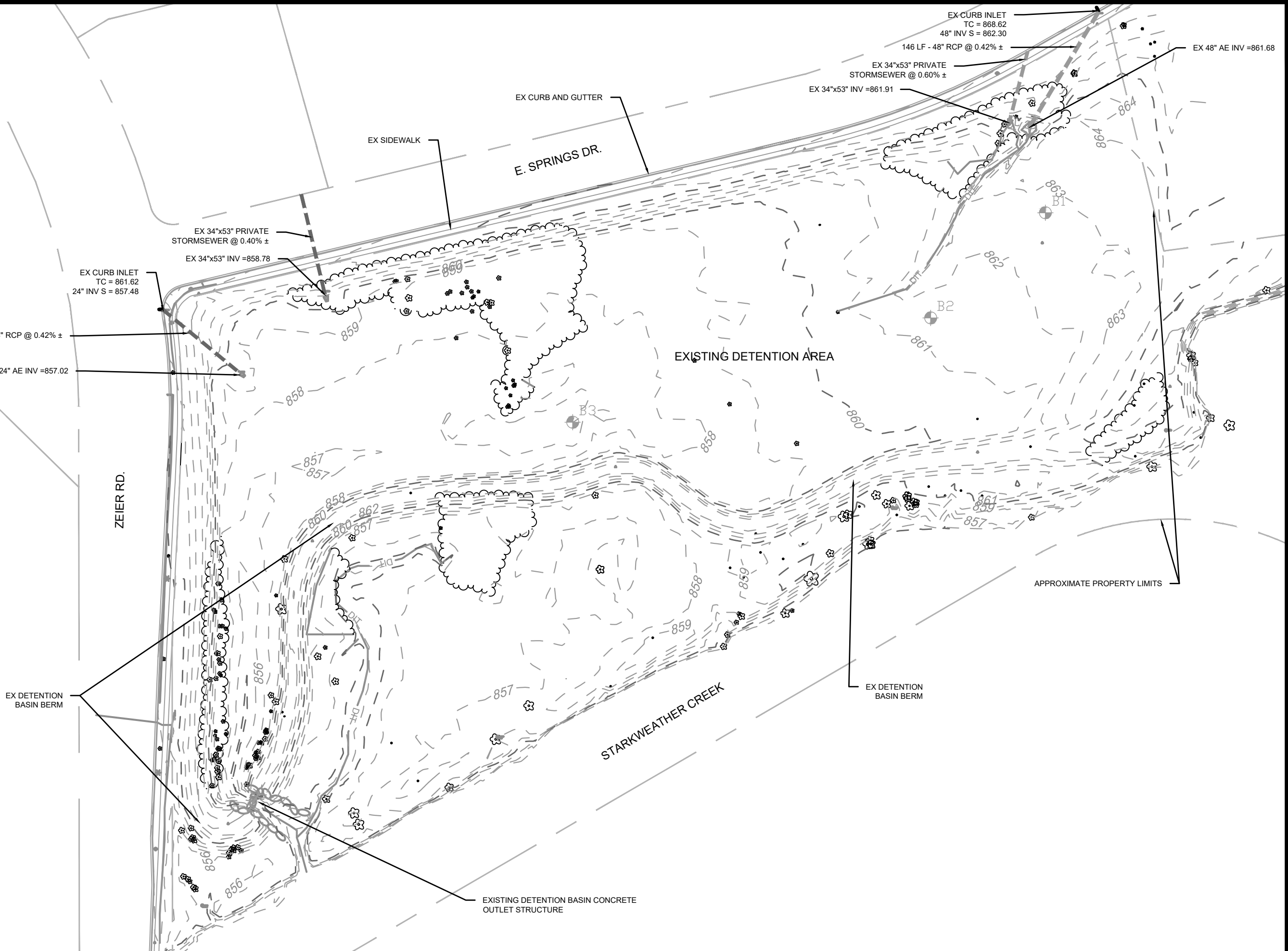
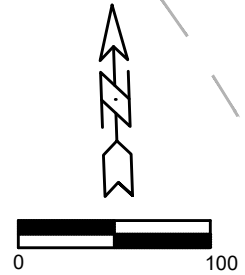


PLOT SCALE: 1:1_XREF

PLOT NAME: ---

REV. DATE: 10/3/2022 4:09 PM

ORIGINATOR: CITY_OF_MADISON



MARK	REVISION	DATE	BY

Designed By: GVP
 Date: 10/3/2022 4:14 PM
 Scale: 1"=100'
 11066
 EX1

11066
 1801 ZEIER RD, MADISON, WI
 CONTRACT NO: 9437



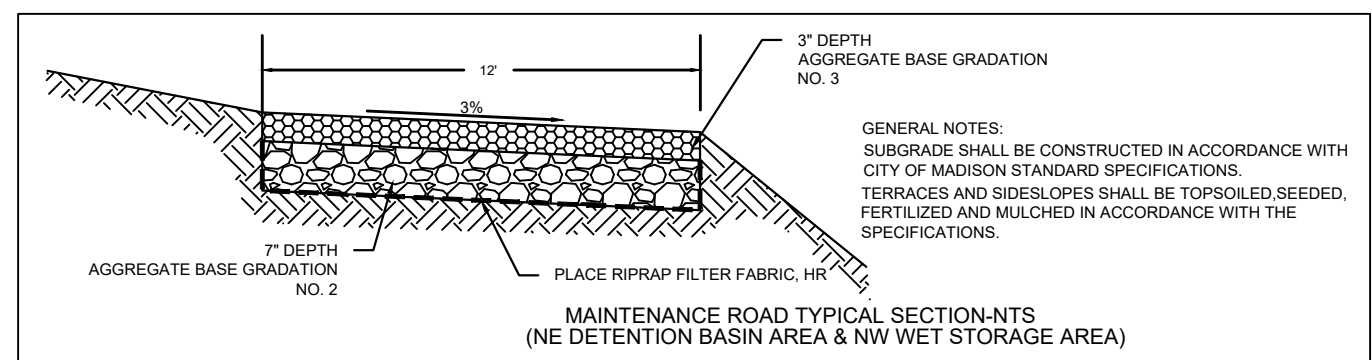
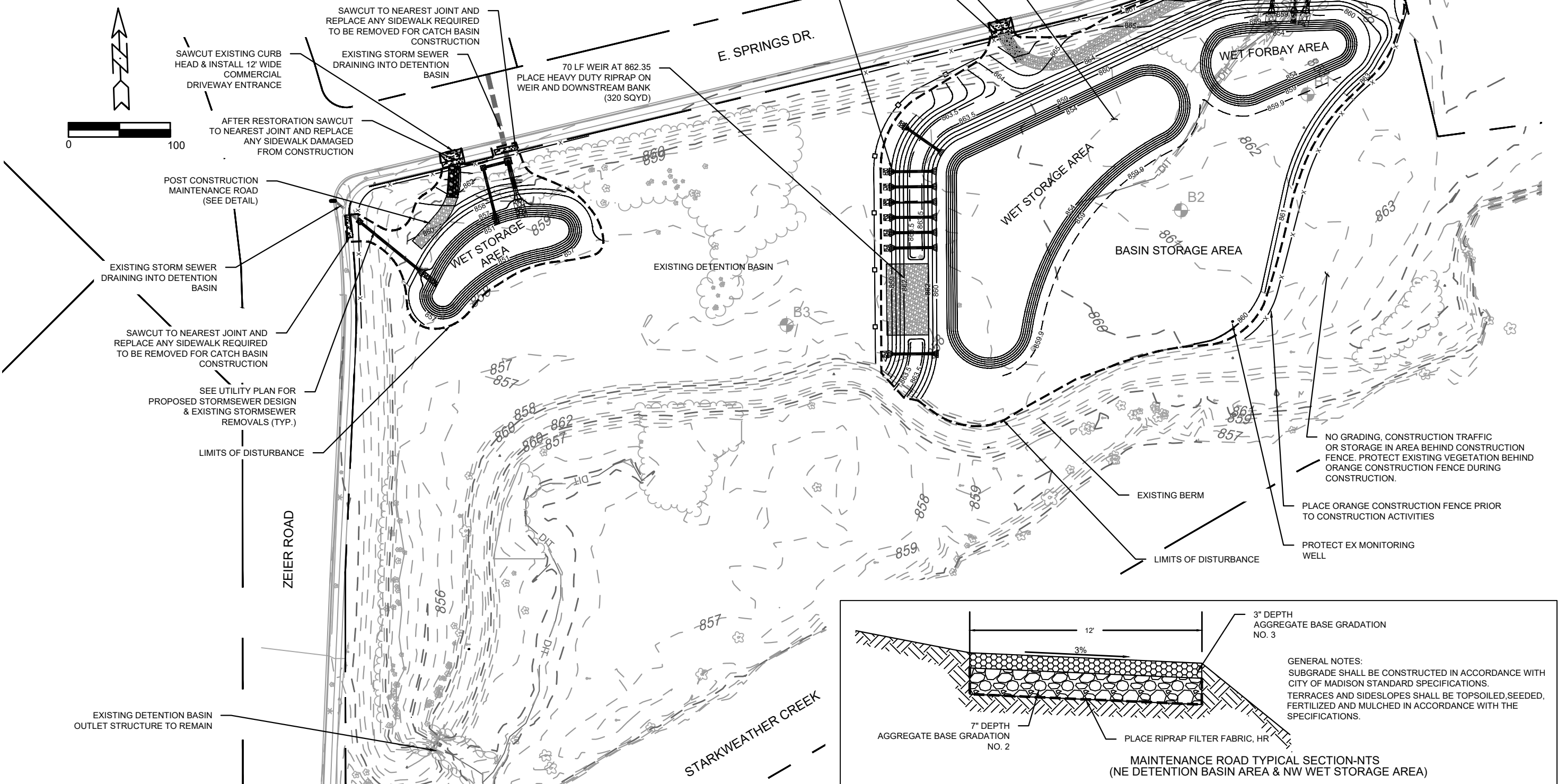
11066
 EX 1

M:\DESIGN\Projects\11066\CAD\Sewers\11066 East Towne Pond Ex Conditions.dwg

GENERAL NOTES:

- ALL SITE WORK AND MATERIALS SHALL BE PER THE CITY OF MADISON STANDARD SPECIFICATIONS
- EROSION CONTROL MEASURES SHALL BE PLACED PER THE APPROVED EROSION CONTROL PLAN
- LENGTHS OF STORM SEWER INCLUDE ENDWALLS
- STORM SEWER LENGTHS SHALL BE FIELD VERIFIED DURING CONSTRUCTION TO ENSURE THAT THEY ARE LONG ENOUGH TO CONFORM TO THE TYPICAL SECTION
- ALL DISTURBED AREAS SHALL RECEIVE A MINIMUM OF 6" OF TOPSOIL, FERTILIZER, SEED AND MULCH. SEED MIXTURE SHALL BE PER THE CITY OF MADISON REQUIREMENTS. FERTILIZER SHALL BE PLACED PER A SOIL TEST. VEGETATION WITHIN THE DETENTION BASIN SHALL BE TOLERANT OF FLUCTUATING WATER CONDITIONS.
- IF ANY ERRORS, DISCREPANCIES OR DIMENSIONS WITH THE PLAN BECOME APPARENT. IT SHALL BE BROUGHT TO THE ATTENTION OF THE ENGINEER PRIOR TO CONSTRUCTION.
- CONTRACTOR IS RESPONSIBLE TO OBTAIN ANY AND ALL PERMITS REQUIRED.
- CONTRACTOR SHALL REPLACE ALL SIDEWALK AND CURB & GUTTER WHICH ABUTS THE PROPERTY AND IS DAMAGED BY CONSTRUCTION
- ALL DAMAGE TO PAVEMENT OF ADJACENT PUBLIC STREETS SHALL BE RESTORED IN ACCORDANCE WITH THE CITY OF MADISON'S PAVEMENT PATCHING CRITERIA.

(8) - 24" OUTLET CULVERTS SPACED TO SPREAD FLOW WITH APRON ENDWALLS AND 6'X6' RIPRAP PADS. SEE UTILITY PLAN FOR STORMSEWER DESIGN (TYP.)



GENERAL NOTES:
 SUBGRADE SHALL BE CONSTRUCTED IN ACCORDANCE WITH CITY OF MADISON STANDARD SPECIFICATIONS.
 TERRACES AND SIDESLOPES SHALL BE TOPSOILED, SEEDED, FERTILIZED AND MULCHED IN ACCORDANCE WITH THE SPECIFICATIONS.

11066	1801 ZEIER RD, MADISON, WI	9437
OVERALL SITE LAYOUT	EAST TOWNE POND	CONTRACT NO.:
City of Madison Wisconsin Logo 11066 S1		

Overall Site Layout
 East Towne Pond
 11066
 S1
 Contract No. 9437
 1801 Zeier Rd, Madison, WI
 11066
 S1
 Date: 10/31/2022 4:15 PM
 Scale: 1" = 100'
 Designed By: GVP
 Marked By: GVP
 Revision
 Date
 By
 S1

LEGEND



DENOTES TREES OVER 6" DIAMETER TO BE REMOVED FOR GREENWAY IMPROVEMENTS. ALL OTHER TREES UNDER 6" DIAMETER, BRUSH AND DOWNED TREES SHALL BE REMOVED BY THE CONTRACTOR WITHIN THE LIMITS OF DISTURBANCE UNDER THE BRUSHING BID ITEM. VERIFY TREES TO BE REMOVED DURING CONSTRUCTION WITH ENGINEER

ALL BRUSH, TREES, AND DOWNED TREES NOT NOTED WITHIN THE LIMITS OF DISTURBANCE, TO BE REMOVED UNDER THE BRUSHING BID ITEM

ALL BRUSH, TREES AND DOWNED TREES NOT NOTED WITHIN THE LIMITS OF DISTURBANCE, TO BE REMOVED UNDER THE BRUSHING BID ITEM

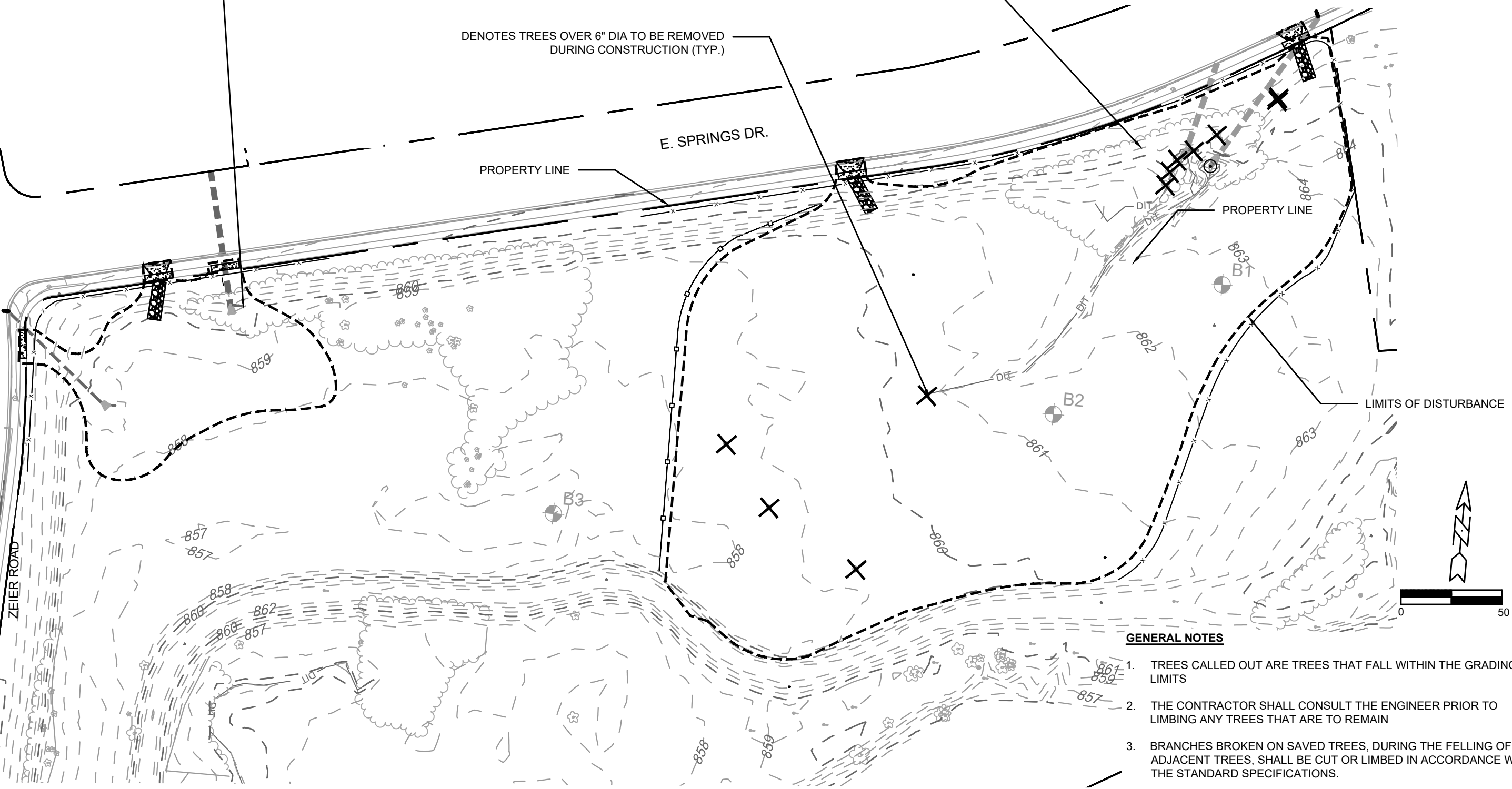
DENOTES TREES OVER 6" DIA TO BE REMOVED DURING CONSTRUCTION (TYP.)

E. SPRINGS DR.

PROPERTY LINE

PROPERTY LINE

LIMITS OF DISTURBANCE



GENERAL NOTES

1. TREES CALLED OUT ARE TREES THAT FALL WITHIN THE GRADING LIMITS
2. THE CONTRACTOR SHALL CONSULT THE ENGINEER PRIOR TO LIMBING ANY TREES THAT ARE TO REMAIN
3. BRANCHES BROKEN ON SAVED TREES, DURING THE FELLING OF ADJACENT TREES, SHALL BE CUT OR LIMBED IN ACCORDANCE WITH THE STANDARD SPECIFICATIONS.
4. STUMPS WITHIN THE GRADING LIMITS SHALL BE GRUBBED OR PULLED TO MEET FINAL GRADE.

MARK	REVISION	DATE	BY
11066		10/3/2022 4:15 PM	CPI

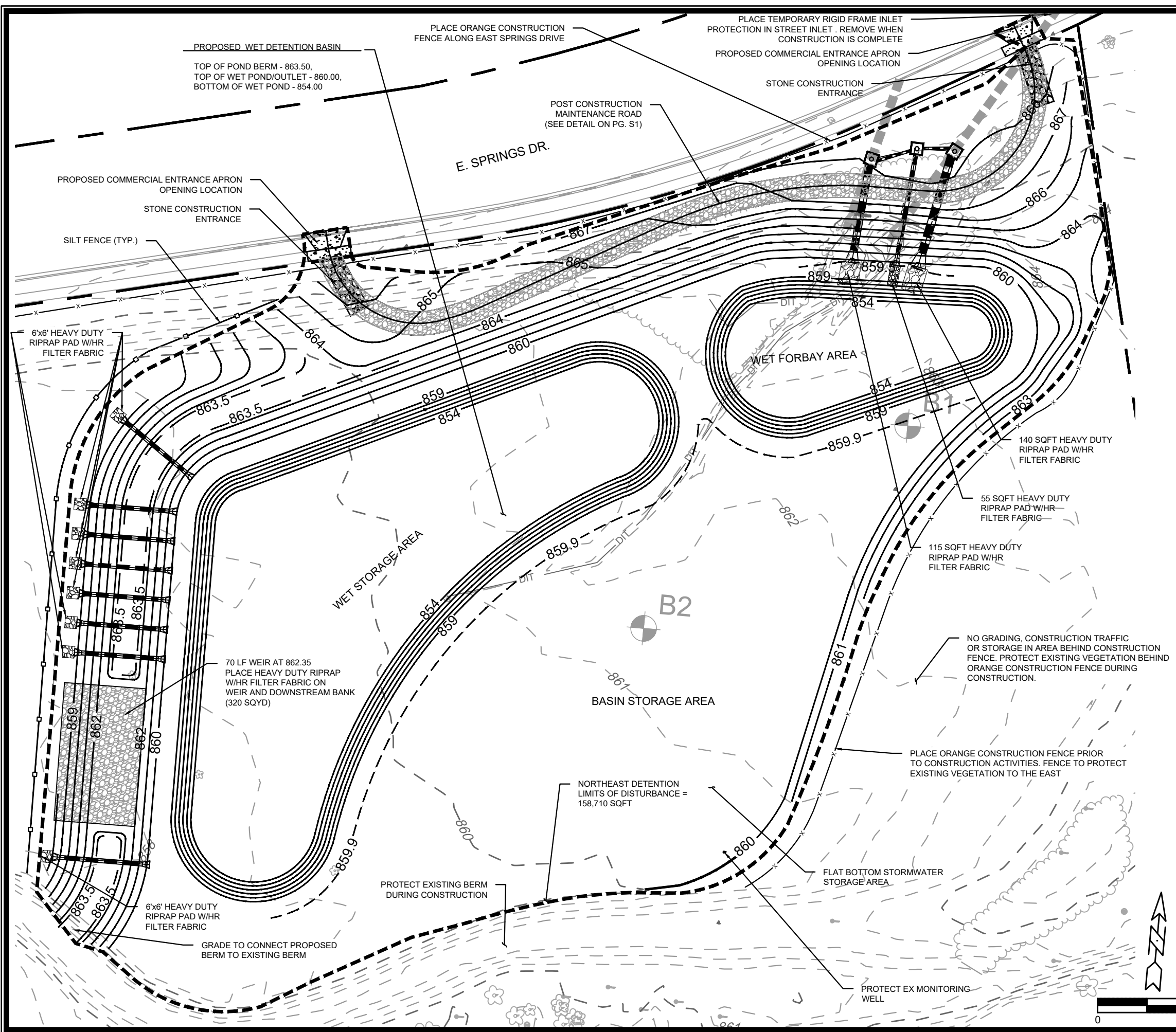
11066
1801 ZEIER RD, MADISON, WI
CONTRACT NO: 9437

CLEARING PLAN
EAST TOWNE POND



11066
CP1

M:\DESIGN\Projects\11066\CAD\Sewers\11066 East Town Detention Basin.dwg



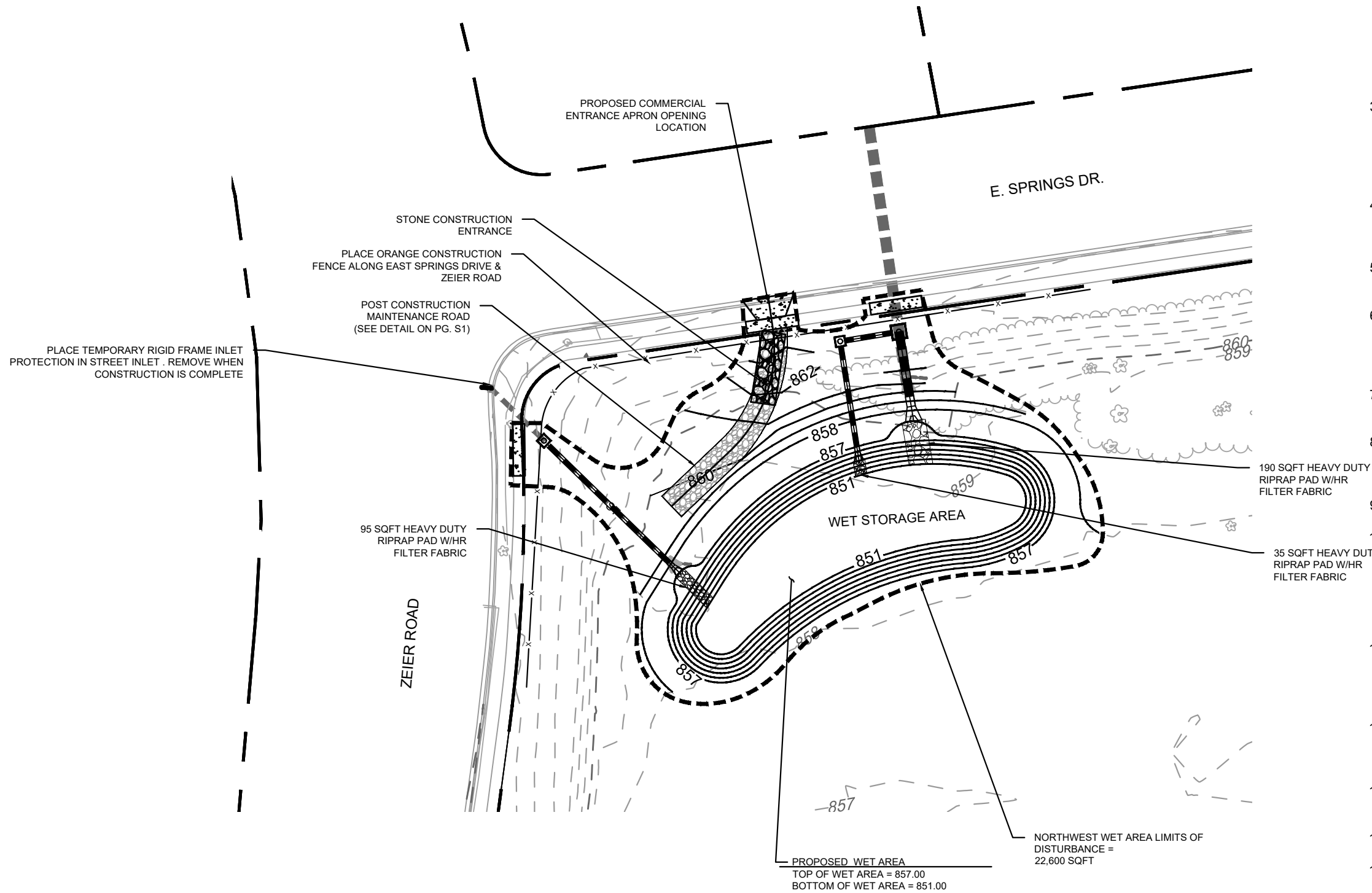
- EROSION CONTROL NOTES:**
1. ALL EROSION CONTROL MEASURES SHALL BE CONSTRUCTED AND MAINTAINED BY THE CONTRACTOR IN ACCORDANCE WITH THE WISCONSIN DNR TECHNICAL STANDARDS AND CITY OF MADISON STANDARD SPECIFICATIONS.
 2. INSTALL EROSION CONTROL MEASURES PRIOR TO ANY SITE WORK, MODIFICATIONS TO SEDIMENT CONTROL DESIGN MAY BE CONDUCTED TO MEET UNFORESEEN FIELD CONDITIONS. THE CONTRACTOR SHALL PLACE SILT SOCK OR SILT FENCE AT THE DIRECTION OF THE CONSTRUCTION ENGINEER.
 3. EROSION CONTROL MEASURES INDICATED ON THE PLANS SHALL BE CONSIDERED MINIMUMS. IF DETERMINED NECESSARY DURING CONSTRUCTION ADDITIONAL MEASURES SHALL BE INSTALLED TO PREVENT SEDIMENT FROM LEAVING THE SITE.
 4. INSPECT EROSION CONTROL MEASURES AFTER EACH 1/2" OR GREATER RAINFALL. REPAIR ANY DAMAGE OBSERVED DURING CONSTRUCTION.
 5. CONTRACTOR SHALL REMOVE ALL EROSION CONTROL PRACTICES WHEN THE SITE IS RESTORED.
 6. THE CONTRACTOR IS RESPONSIBLE FOR THE CONSTRUCTION AND MAINTENANCE OF ALL EROSION CONTROL MEASURES UNTIL FINAL ACCEPTANCE BY THE CITY OF MADISON
 7. NO SITE GRADING OUTSIDE OF THE LIMITS OF DISTURBANCE
 8. INSTALL INLET PROTECTION IN ALL STORM SEWER INLETS AND CATCH BASINS THAT MAY RECEIVE RUNOFF FROM DISTURBED AREAS
 9. CUT AND FILL SLOPES SHALL BE NO GREATER THAN 3:1
 10. ALL DISTURBED AREAS WITH A SLOPE OF 4:1 OR GREATER, PROPOSED BERM AREA, AND AREA WITHIN THE DETENTION BASIN LIMITS SHALL BE STABILIZED WITH CLASS I, TYPE A ORGANIC EROSION MATTING AND ALL DRAINAGE SWALES SHALL BE STABILIZED WITH CLASS II, TYPE C EROSION MATTING.
 11. ALL INCIDENTAL MUD TRACKING OFF-SITE ONTO ADJACENT PUBLIC THOROUGHFARES SHALL BE CLEANED UP AND REMOVED BY THE END OF EACH WORKING DAY USING PROPER DISPOSAL METHODS.
 12. PREVENT EXCESSIVE DUST FROM LEAVING THE CONSTRUCTION SITE IN ACCORDANCE WITH LOCAL AND STATE REGULATIONS.
 13. INSTALL EROSION CONTROLS ON THE DOWNSTREAM SIDE OF STOCKPILES.
 14. CONTOURS REPRESENT FINISH GRADE.
 15. ALL DISTURBED AREAS SHALL RECEIVE A MINIMUM OF 6" OF TOPSOIL, FERTILIZER, SEED AND MULCH. SEED MIXTURE SHALL BE PER THE CITY OF MADISON REQUIREMENTS. FERTILIZER SHALL BE PLACED PER A SOIL TEST.
 16. DEWATERING SHALL BE CONDUCTED PER WDNR STORM WATER MANAGEMENT TECHICAL STANDARD 1061.

DATE	BY
10/3/2022 4:15 PM	GPI
REVISION	
MARK	
DESIGNED BY: GVP	Scale: 1" = 10'
11066	

11066
 GRADING AND EROSION CONTROL PLAN - NE DETENTION AREA
 1801 ZEIER RD, MADISON, WI
 CONTRACT NO: 9437

MA:DESIGN\Projects\11066\CAD\Sewers\11066 East Town Detention Basin.dwg

11066
 GP1



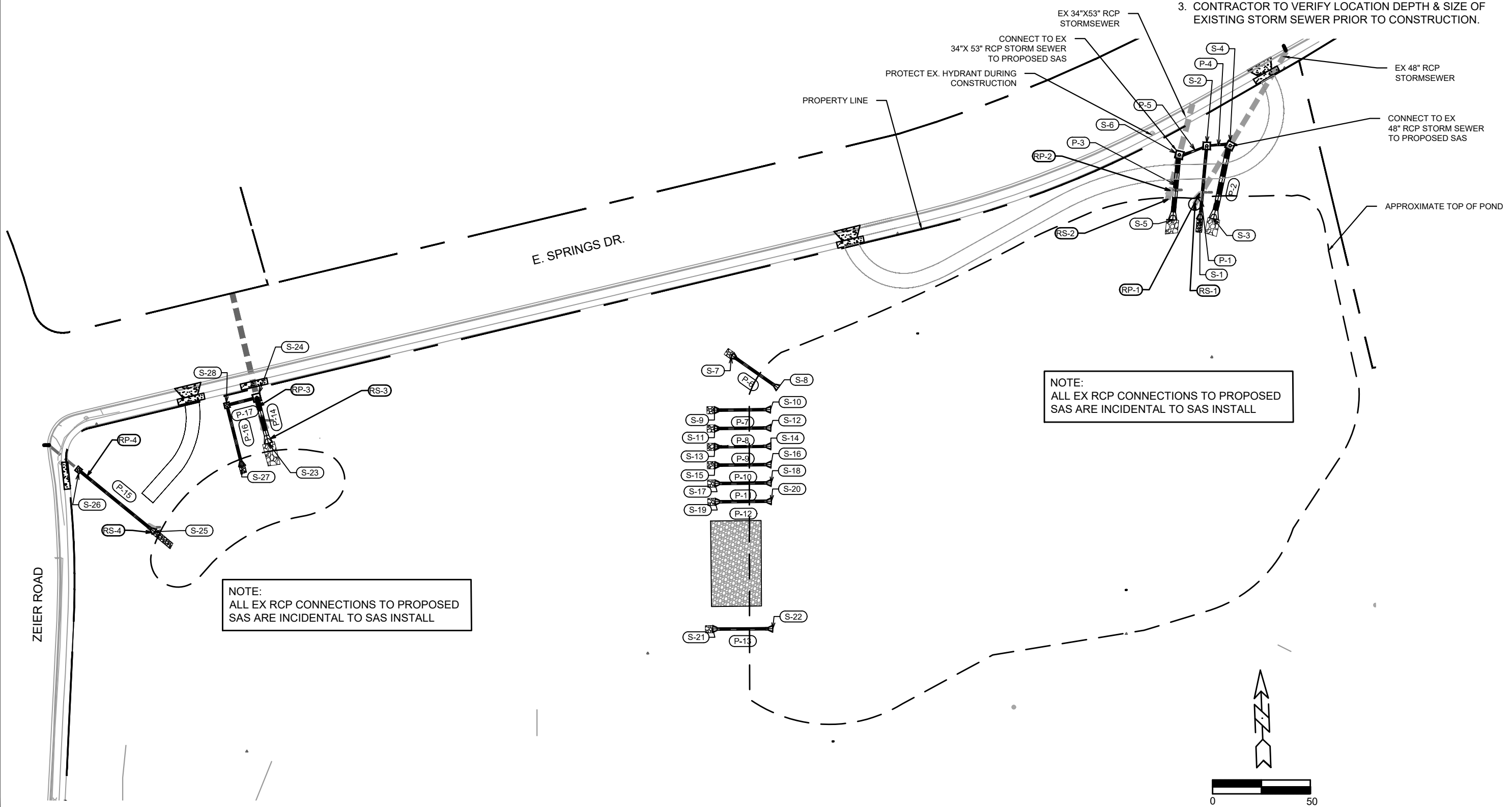
EROSION CONTROL NOTES:

1. ALL EROSION CONTROL MEASURES SHALL BE CONSTRUCTED AND MAINTAINED BY THE CONTRACTOR IN ACCORDANCE WITH THE WISCONSIN DNR TECHNICAL STANDARDS AND CITY OF MADISON STANDARD SPECIFICATIONS.
2. INSTALL EROSION CONTROL MEASURES PRIOR TO ANY SITE WORK, MODIFICATIONS TO SEDIMENT CONTROL DESIGN MAY BE CONDUCTED TO MEET UNFORESEEN FIELD CONDITIONS. THE CONTRACTOR SHALL PLACE SILT SOCK OR SILT FENCE AT THE DIRECTION OF THE CONSTRUCTION ENGINEER.
3. EROSION CONTROL MEASURES INDICATED ON THE PLANS SHALL BE CONSIDERED MINIMUMS. IF DETERMINED NECESSARY DURING CONSTRUCTION ADDITIONAL MEASURES SHALL BE INSTALLED TO PREVENT SEDIMENT FROM LEAVING THE SITE.
4. INSPECT EROSION CONTROL MEASURES AFTER EACH 1/2" OR GREATER RAINFALL. REPAIR ANY DAMAGE OBSERVED DURING CONSTRUCTION.
5. CONTRACTOR SHALL REMOVE ALL EROSION CONTROL PRACTICES WHEN THE SITE IS RESTORED.
6. THE CONTRACTOR IS RESPONSIBLE FOR THE CONSTRUCTION AND MAINTENANCE OF ALL EROSION CONTROL MEASURES UNTIL FINAL ACCEPTANCE BY THE CITY OF MADISON
7. NO SITE GRADING OUTSIDE OF THE LIMITS OF DISTURBANCE
8. INSTALL INLET PROTECTION IN ALL STORM SEWER INLETS AND CATCH BASINS THAT MAY RECEIVE RUNOFF FROM DISTURBED AREAS
9. CUT AND FILL SLOPES SHALL BE NO GREATER THAN 3:1
10. ALL DISTURBED AREAS WITH A SLOPE OF 4:1 OR GREATER, PROPOSED BERM AREA, AND AREA WITHIN THE DETENTION BASIN LIMITS SHALL BE STABILIZED WITH CLASS I, TYPE A ORGANIC EROSION MATTING AND ALL DRAINAGE SWALES SHALL BE STABILIZED WITH CLASS II, TYPE C EROSION MATTING.
11. ALL INCIDENTAL MUD TRACKING OFF-SITE ONTO ADJACENT PUBLIC THOROUGHFARES SHALL BE CLEANED UP AND REMOVED BY THE END OF EACH WORKING DAY USING PROPER DISPOSAL METHODS.
12. PREVENT EXCESSIVE DUST FROM LEAVING THE CONSTRUCTION SITE IN ACCORDANCE WITH LOCAL AND STATE REGULATIONS.
13. INSTALL EROSION CONTROLS ON THE DOWNSTREAM SIDE OF STOCKPILES.
14. CONTOURS REPRESENT FINISH GRADE.
15. ALL DISTURBED AREAS SHALL RECEIVE A MINIMUM OF 6" OF TOPSOIL, FERTILIZER, SEED AND MULCH. SEED MIXTURE SHALL BE PER THE CITY OF MADISON REQUIREMENTS. FERTILIZER SHALL BE PLACED PER A SOIL TEST.
16. DEWATERING SHALL BE CONDUCTED PER WDNR STORM WATER MANAGEMENT TECHNICAL STANDARD 1061.

	<p>11066</p> <p>GP 2</p>	<p>GRADING AND EROSION CONTROL PLAN - NW WET STORAGE AREA</p> <p>EAST TOWNE POND</p> <p>1801 ZEIER RD, MADISON, WI</p> <p>CONTRACT NO: 9437</p>
M:\DESIGN\Projects\11066\CAD\Sewers\11066 East Town Detention Basin.dwg	Scale: 1" = 50'	Date: 10/3/2022 4:15 PM Designed By: GVP REVISION MARK BY DATE 11066 GP1

SITE UTILITY NOTES

1. ALL CONSTRUCTION & MATERIALS SHALL BE PER THE CITY OF MADISON STANDARD SPECIFICATIONS
2. THE LOCATION OF EXISTING UTILITIES SHOWN ON THE PLANS ARE APPROXIMATE. PROTECTION OF EXISTING UTILITIES IS THE CONTRACTOR'S RESPONSIBILITY.
3. CONTRACTOR TO VERIFY LOCATION DEPTH & SIZE OF EXISTING STORM SEWER PRIOR TO CONSTRUCTION.



MARK	REVISION	DATE	BY

11066
 1801 ZEIER RD, MADISON, WI
 CONTRACT NO: 9437



11066
 U1

M:\DESIGN\Projects\11066\CAD\Sewers\11066 East Towne Detention Basin.dwg

STORM SEWER SCHEDULE

EAST TOWNE POND	SHEET NO.
PROJECT NO. 11066	1 of 1
STORM SEWER SCHEDULE	
CITY OF MADISON	

PROPOSED STORM STRUCTURES

STRUC. NO.	LOCATION (NORTHING)	LOCATION (EASTING)	TYPE	TOP OF CASTING	E.I.	DEPTH	NOTES
S-1	501419.39	844599.02	24" RCP APRON ENDWALL	-	859.50	-	W/GATE
S-2	501479.13	844604.54	5'X5' SAS	868.20	859.78	13.42 (Includes 5' Sump)	FP, W/R-1878-B7G (1)(2)
S-3	501419.50	844610.08	48" RCP APRON ENDWALL	-	859.50	-	W/GATE
S-4	501479.39	844623.68	6'X6' SAS	868.10	860.67	7.43	FP, W/R-1878-B7G (3)
S-5	501418.72	844576.64	42" RCP APRON ENDWALL	-	859.50	-	W/GATE
S-6	501471.82	844582.05	6'X6' SAS	868.10	860.89	7.21	FP, W/R-1878-B7G (4)
S-7	501307.54	844215.93	24" RCP APRON ENDWALL	-	859.00	-	
S-8	501281.05	844253.67	24" RCP APRON ENDWALL	-	860.00	-	
S-9	501262.86	844201.43	24" RCP APRON ENDWALL	-	859.00	-	
S-10	501263.35	844247.43	24" RCP APRON ENDWALL	-	860.00	-	
S-11	501247.86	844201.56	24" RCP APRON ENDWALL	-	859.00	-	
S-12	501248.35	844247.63	24" RCP APRON ENDWALL	-	860.00	-	
S-13	501232.86	844201.70	24" RCP APRON ENDWALL	-	859.00	-	
S-14	501233.35	844247.69	24" RCP APRON ENDWALL	-	860.00	-	
S-15	501217.86	844201.83	24" RCP APRON ENDWALL	-	859.00	-	
S-16	501218.35	844247.83	24" RCP APRON ENDWALL	-	860.00	-	
S-17	501202.94	844201.85	24" RCP APRON ENDWALL	-	859.00	-	
S-18	501203.35	844247.96	24" RCP APRON ENDWALL	-	860.00	-	
S-19	501187.94	844201.98	24" RCP APRON ENDWALL	-	859.00	-	
S-20	501188.35	844248.09	24" RCP APRON ENDWALL	-	860.00	-	
S-21	501083.80	844200.06	24" RCP APRON ENDWALL	-	859.00	-	
S-22	501084.03	844249.23	24" RCP APRON ENDWALL	-	860.00	-	
S-23	501235.90	843836.34	42" RCP APRON ENDWALL	-	857.00	-	W/GATE
S-24	501273.16	843826.76	6X6 SAS	865.35	855.70	9.65	FP, W/R-1878-B7G (5)
S-25	501163.33	843742.95	24" RCP APRON ENDWALL	-	857.00	-	W/GATE
S-26	501213.96	843680.84	4X4 RCP APRON ENDWALL	862.50	852.34	10.16 (Includes 5' Sump)	FP, W/R-1878-B7G (1)(2)
S-27	501217.19	843814.71	24" RCP APRON ENDWALL	-	854.00	-	W/GATE
S-28	501266.87	843802.31	4X4 RCP APRON ENDWALL	863.60	849.51	14.09 (Includes 5' Sump)	FP, W/R-1878-B7G (1)(2)(6)

PROPOSED STORM PIPES

PIPE NO.	FROM (DNSTM)	TO (UPSTM)	DISCH. E.I.	INLET E.I.	PLAN (PAY) LGTH (FT)	PIPE LGTH (FT)	SLOPE (%)	PIPE SIZE	TYPE	NOTES
P-1	S-1	S-2	859.50	859.78	60	57	0.47%	24 IN RCP	TYPE 1	
P-2	S-3	S-4	859.50	862.12	61	59	4.27%	48 IN RCP	TYPE 1	
P-3	S-5	S-6	859.50	862.24	53	51	5.13%	42 IN RCP	TYPE 1	
P-4	S-2	S-4	860.57	860.67	19	13	0.52%	15 IN RCP	TYPE 1	
P-5	S-2	S-6	860.57	860.89	24	17	1.35%	15 IN RCP	TYPE 1	
P-6	S-7	S-8	859.00	860.00	46	46	2.17%	24 IN RCP	TYPE 1	
P-7	S-9	S-10	859.00	860.00	46	46	2.17%	24 IN RCP	TYPE 1	
P-8	S-11	S-12	859.00	860.00	46	46	2.17%	24 IN RCP	TYPE 1	
P-9	S-13	S-14	859.00	860.00	46	46	2.17%	24 IN RCP	TYPE 1	
P-10	S-15	S-16	859.00	860.00	46	46	2.17%	24 IN RCP	TYPE 1	
P-11	S-17	S-18	859.00	860.00	46	46	2.17%	24 IN RCP	TYPE 1	
P-12	S-19	S-20	859.00	860.00	46	46	2.17%	24 IN RCP	TYPE 1	
P-13	S-21	S-22	859.00	860.00	49	49	2.03%	24 IN RCP	TYPE 1	
P-14	S-23	S-24	857.00	858.86	39	36	4.83%	42 IN RCP	TYPE 1	
P-15	S-25	S-26	857.00	857.34	80	78	0.42%	24 IN RCP	TYPE 1	
P-16	S-27	S-28	854.00	854.51	51	49	1.00%	24 IN RCP	TYPE 1	
P-17	S-28	S-24	855.45	855.70	25	20	0.99%	24 IN RCP	TYPE 1	

EXISTING STORM STRUCTURE REMOVALS

STRUC. NO.	LOCATION (NORTHING)	LOCATION (EASTING)	TYPE	LENGTH (FT)	NOTES
RS-1	501431.43	844594.74	48" RCP APRON ENDWALL	8.00	REMOVAL PAID FOR UNDER PIPE REMOVAL
RS-2	501434.67	844572.59	34"X53" RCP APRON ENDWALL	8.00	REMOVAL PAID FOR UNDER PIPE REMOVAL
RS-3	501250.88	843833.34	34"X53" RCP APRON ENDWALL	8.00	REMOVAL PAID FOR UNDER PIPE REMOVAL
RS-4	501165.26	843741.08	24" RCP APRON ENDWALL	5.00	REMOVAL PAID FOR UNDER PIPE REMOVAL

STORM PIPE REMOVALS

PIPE REMOV.	REMOVE FROM	LENGTH (FT)	SIZE	TYPE
RP-1	END OF PIPE	60	48"	RCP
RP-2	END OF PIPE	41	34"X53"	RCP
RP-3	END OF PIPE	30	34"X53"	RCP
RP-4	END OF PIPE	77	24"	RCP


SPECIFIC NOTES:

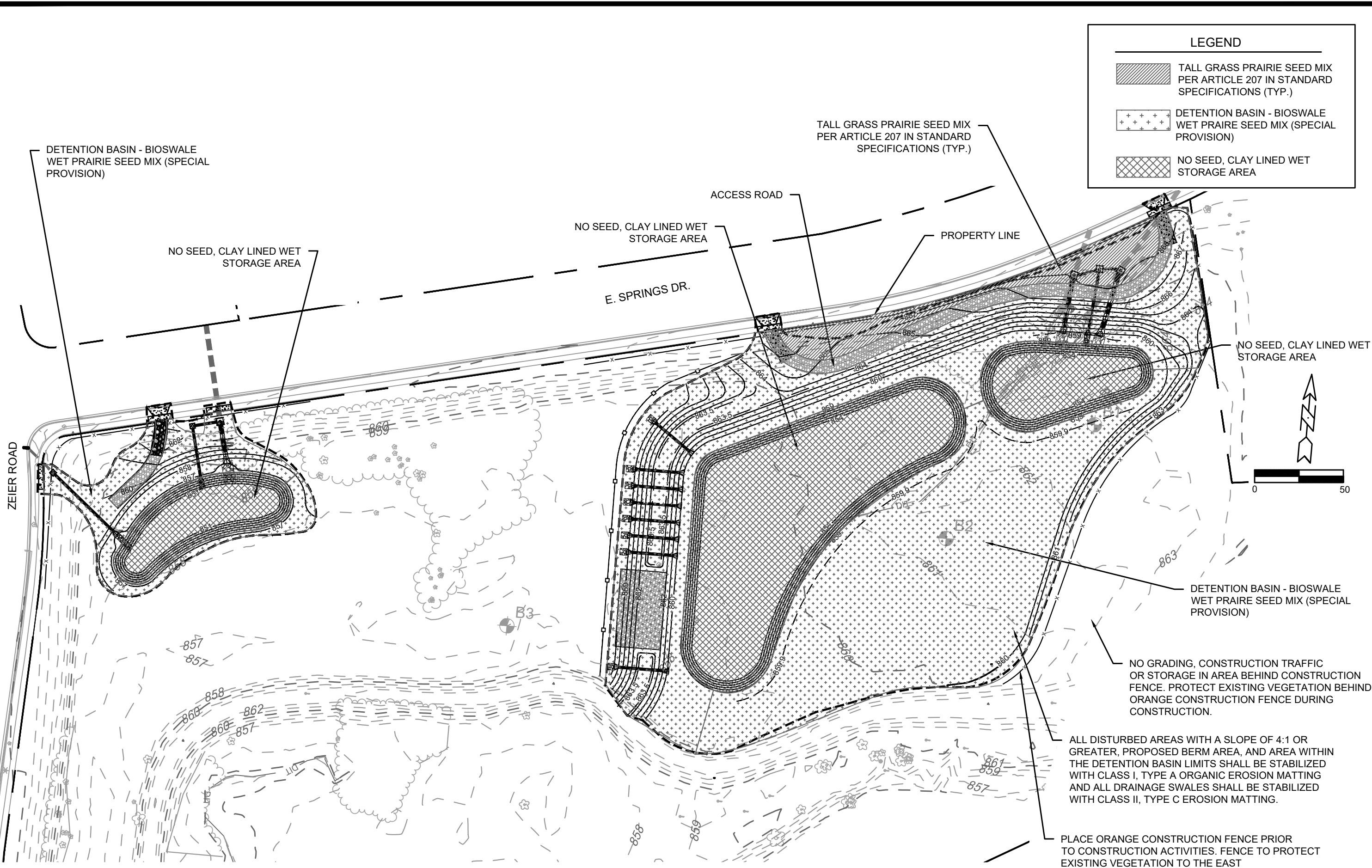
- STRUCTURE INCLUDES 5' SUMP
- STRUCTURE INCLUDES "SNOUT - 30F OIL AND DEPRIS STOP"
- CONNECT TO EX 48" RCP; CONNECTION PAID AS INCIDENTAL TO S-4
- CONNECT TO EX 34"X53" RCP; CONNECTION PAID AS INCIDENTAL TO S-6
- CONNECT TO EX 34"X53" RCP; CONNECTION PAID AS INCIDENTAL TO S-24
- CONNECT TO EX 24" RCP; CONNECTION PAID AS INCIDENTAL TO S-26

STANDARD NOTES:

- PLAN LENGTH (PAY LENGTH) IS FROM CENTER OF STRUCTURE TO CENTER OF STRUCTURE. PIPE LENGTH IS ACTUAL LENGTH OF PIPE FROM STRUCTURE WALL TO STRUCTURE WALL. SLOPE CALCULATED USING PIPE LENGTH.
- ABBREVIATIONS: AE = APRON ENDWALL; RCP = REINFORCED CONCRETE PIPE; HERCP = HORIZONTAL ELLIPTICAL REINFORCED CONCRETE PIPE; DNA = DOES NOT APPLY; SAS = SEWER ACCESS STRUCTURE; LP = LOW POINT INLET STRUCTURE; FP = FIELD POURED STRUCTURE; TR = TOP OF CONCRETE ROOF; NCM = NO CROWN MATCH FOR PIPES; UD = UNDERDRAIN
- APPROXIMATE DISCHARGE E.I. GIVEN, ADJUST E.I. AND PIPE SLOPE IN THE FIELD.
- TOP OF CASTING GRADE GIVEN IS THE TOP OF CURB FOR INLET STRUCTURES AND THE FLOWLINE OF THE CLOSED CASTING FOR SAS's.

- ALL REINFORCED CONCRETE PIPES TO BE CLASS III UNLESS OTHERWISE NOTED.
- SURVEY OR TO CONFIRM THAT ALL INLET STATION / OFFSETS LINE UP WITH PROPOSED CURB AND GUTTER.
- ALL FIELD POURED SAS STRUCTURES SHALL BE CONSTRUCTED IN ACCORDANCE WITH STANDARD DETAIL DRAWING 5.7.3.
- ALL PRECAST SAS STORM STRUCTURES SHALL BE CONSTRUCTED IN ACCORDANCE WITH STANDARD DETAIL DRAWING 5.7.5.
- ALL STRUCTURES CALLED OUT AS FIELD POURED SHALL BE FIELD POURED. ALL OTHER STRUCTURES (NOT INDICATED AS FIELD POURED) SHALL BE SUBMITTED TO CITY ENGINEERING FOR APPROVAL IF PRECAST STRUCTURES ARE PREFERRED. CONTACT GRANT POKOS OF CITY ENGINEERING AT GPOKOS@CITYOFMADISON.COM FOR PRECAST APPROVALS AND TO SEND SHOP DRAWINGS

11066	1801 ZEIER RD, MADISON, WI	9437
STORMSEWER SCHEDULE	EAST TOWNE POND	CONTRACT NO.:
		
11066	U2	



LEGEND

	TALL GRASS PRAIRIE SEED MIX PER ARTICLE 207 IN STANDARD SPECIFICATIONS (TYP.)
	DETENTION BASIN - BIOSWALE WET PRAIRIE SEED MIX (SPECIAL PROVISION)
	NO SEED, CLAY LINED WET STORAGE AREA

DETENTION BASIN - BIOSWALE WET PRAIRIE SEED MIX (SPECIAL PROVISION)

NO SEED, CLAY LINED WET STORAGE AREA

TALL GRASS PRAIRIE SEED MIX PER ARTICLE 207 IN STANDARD SPECIFICATIONS (TYP.)

NO SEED, CLAY LINED WET STORAGE AREA

ACCESS ROAD

PROPERTY LINE

E. SPRINGS DR.

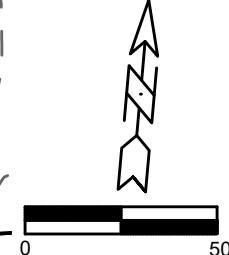
NO SEED, CLAY LINED WET STORAGE AREA

DETENTION BASIN - BIOSWALE WET PRAIRIE SEED MIX (SPECIAL PROVISION)

NO GRADING, CONSTRUCTION TRAFFIC OR STORAGE IN AREA BEHIND CONSTRUCTION FENCE. PROTECT EXISTING VEGETATION BEHIND ORANGE CONSTRUCTION FENCE DURING CONSTRUCTION.

ALL DISTURBED AREAS WITH A SLOPE OF 4:1 OR GREATER, PROPOSED BERM AREA, AND AREA WITHIN THE DETENTION BASIN LIMITS SHALL BE STABILIZED WITH CLASS I, TYPE A ORGANIC EROSION MATTING AND ALL DRAINAGE SWALES SHALL BE STABILIZED WITH CLASS II, TYPE C EROSION MATTING.

PLACE ORANGE CONSTRUCTION FENCE PRIOR TO CONSTRUCTION ACTIVITIES. FENCE TO PROTECT EXISTING VEGETATION TO THE EAST



MARK	REVISION	DATE	BY
Designed By: GVP			Date: 10/3/2022 4:15 PM
11066			VP1

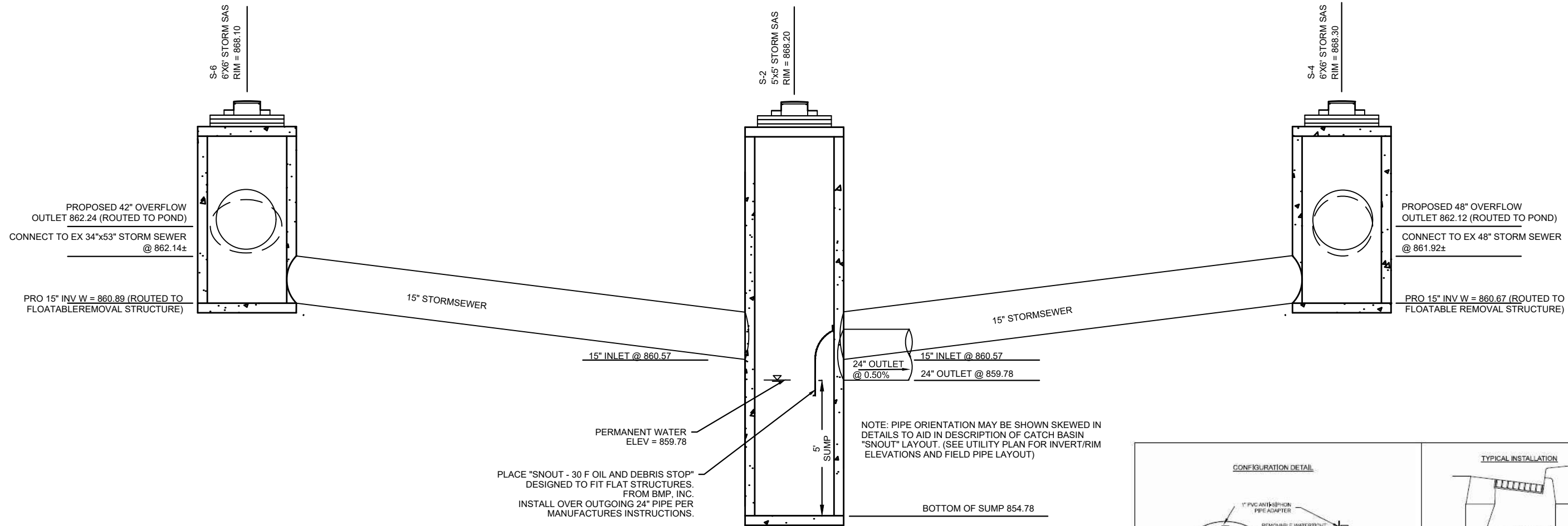
11066
1801 ZEIER RD, MADISON, WI
9437

VEGETATION PLAN
EAST TOWNE POND

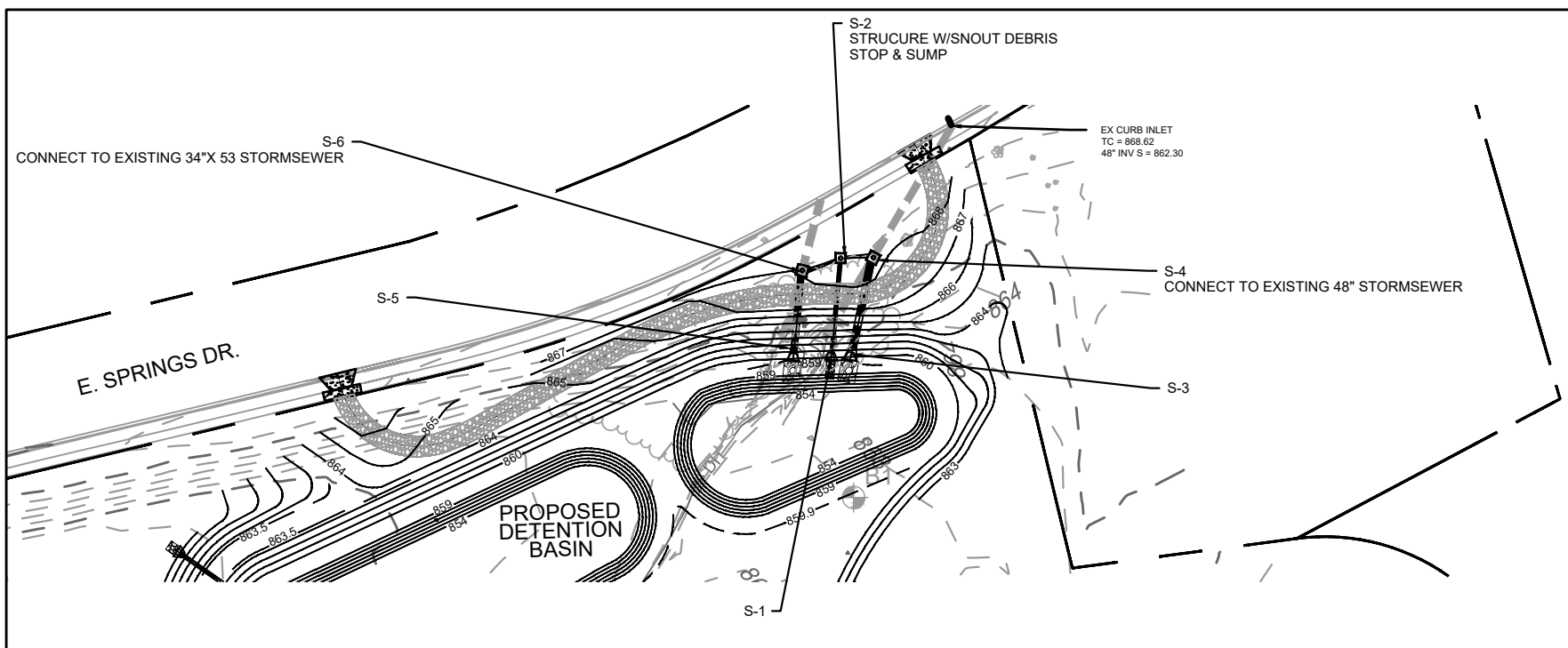


11066
VP1

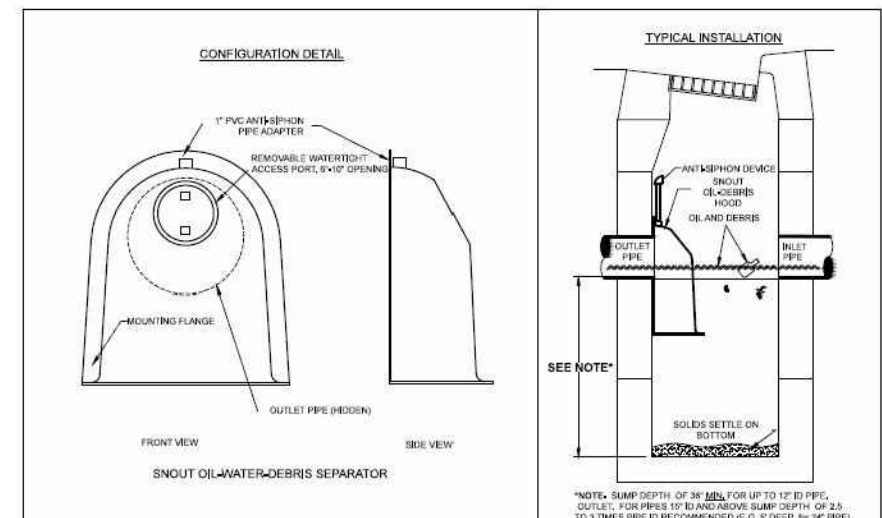
M:\DESIGN\Projects\11066\CAD\Sewers\11066 East Towne Detention Basin.dwg



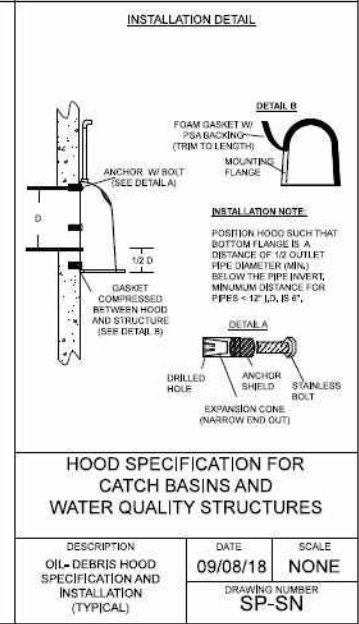
PROFILE VIEW
PROPOSED EAST TOWNE WET DETENTION BASIN -
FLOATABLE REMOVAL SYSTEM (S2, S4, S6)
 NOT TO SCALE



PLAN VIEW
PROPOSED EAST TOWNE WET DETENTION BASIN - FLOATABLE REMOVAL SYSTEM



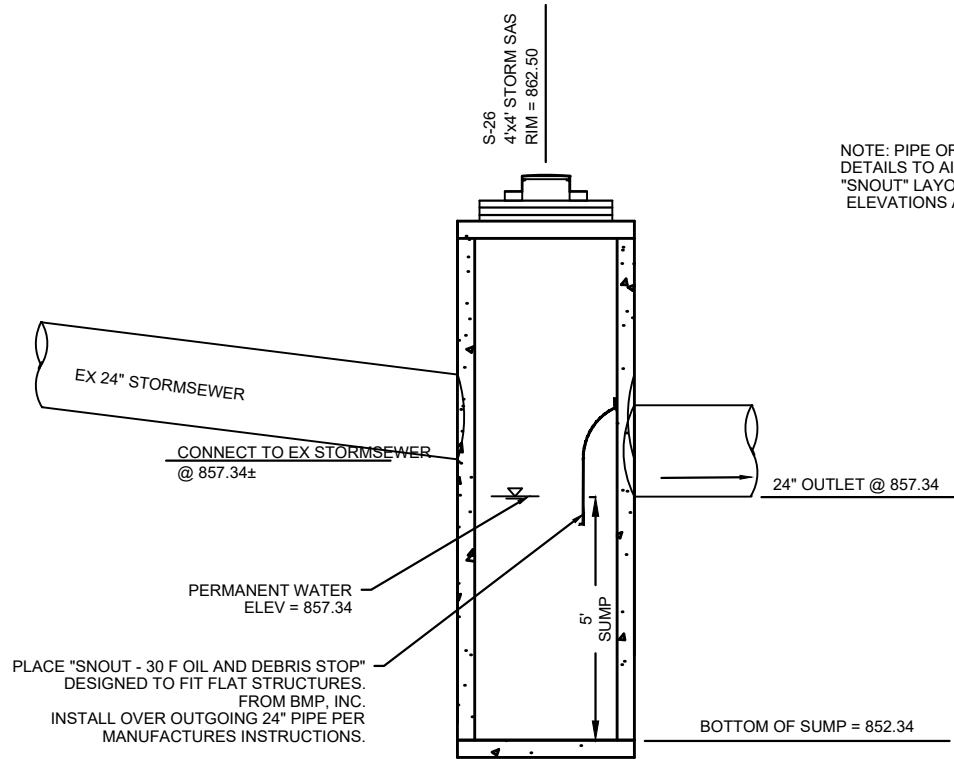
- NOTES:**
- ALL HOODS AND TRAPS FOR CATCH BASINS AND WATER QUALITY STRUCTURES SHALL BE AS MANUFACTURED BY: BEST MANAGEMENT PRODUCTS, INC., 9 MATTHEWS DRIVE, UNIT A1-A2, EAST HADDAM, CT 06423. TOLL FREE: (800) 504-6008 OR (888) 434-0277, FAX: (877) 434-3107. WEB SITE: www.bmpinc.com OR PRE-APPROVED EQUAL.
 - ALL HOODS SHALL BE CONSTRUCTED OF A GLASS REINFORCED RESIN COMPOSITE WITH 150 GEL COAT EXTERIOR FINISH WITH A MINIMUM 0.125" LAMINATE THICKNESS.
 - ALL HOODS SHALL BE EQUIPPED WITH A WATERTIGHT ACCESS PORT, A MOUNTING FLANGE, AND AN ANTI-SIPHON VENT PIPE AND ELBOW AS DRAWN. (SEE CONFIGURATION DETAIL).
 - THE SIZE AND POSITION OF THE HOOD SHALL BE DETERMINED BY OUTLET PIPE SIZE AS PER MANUFACTURER'S RECOMMENDATION (SNOUT SIZE ALWAYS LARGER THAN PIPE SIZE).
 - THE BOTTOM OF THE HOOD SHALL EXTEND DOWNWARD A MINIMUM DISTANCE EQUAL TO 1/2 THE OUTLET PIPE DIAMETER WITH A MINIMUM DISTANCE OF 5" FOR PIPES <12" I.D.
 - THE ANTI-SIPHON VENT SHALL EXTEND ABOVE HOOD BY MINIMUM OF 3" AND A MAXIMUM OF 12" ACCORDING TO STRUCTURE CONFIGURATION.
 - THE SURFACE OF THE STRUCTURE WHERE THE HOOD IS MOUNTED SHALL BE FINISHED SMOOTH AND FREE OF LOOSE MATERIAL AND PIPE SHALL BE FINISHED FLUSH TO WALL.
 - ALL STRUCTURE JOINTS SHALL BE WATERTIGHT.
 - THE HOOD SHALL BE SECURELY ATTACHED TO STRUCTURE WALL WITH 1/2" STAINLESS STEEL BOLTS AND OIL-RESISTANT GASKET AS SUPPLIED BY MANUFACTURER, (SEE INSTALLATION DETAIL).
 - INSTALLATION INSTRUCTIONS SHALL BE FURNISHED WITH MANUFACTURER SUPPLIED INSTALLATION KIT. INSTALLATION KIT SHALL INCLUDE:
 - INSTALLATION INSTRUCTIONS
 - PVC ANTI-SIPHON VENT PIPE AND ADAPTER
 - OIL-RESISTANT CRUSHED CELL FOAM GASKET WITH PSA BACKING
 - 3/8" STAINLESS STEEL BOLTS
 - ANCHOR SHIELDS



DESCRIPTION	DATE	SCALE
OIL-DEBRIS HOOD SPECIFICATION AND INSTALLATION (TYPICAL)	09/08/18	NONE
	DRAWING NUMBER	SP-SN

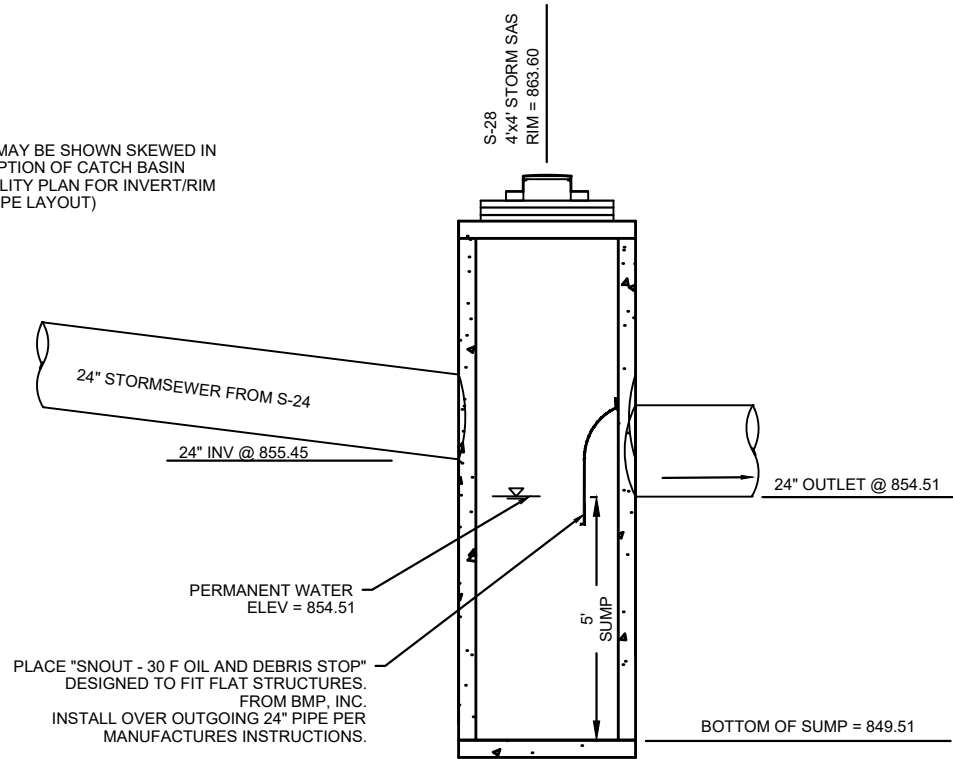
US Patent # 6126817, 7951294, 7857966, 8512556
 Canada Patent # 2285146, 2690156, 2690156 others pending

11066	11066	11066	11066
EAST TOWNE DETENTION - NE DETENTION FLOATABLE REMOVAL SYSTEM	1801 ZEIER RD, MADISON, WI	CONTRACT NO:	D1
EAST TOWNE POND			
11066 D1			

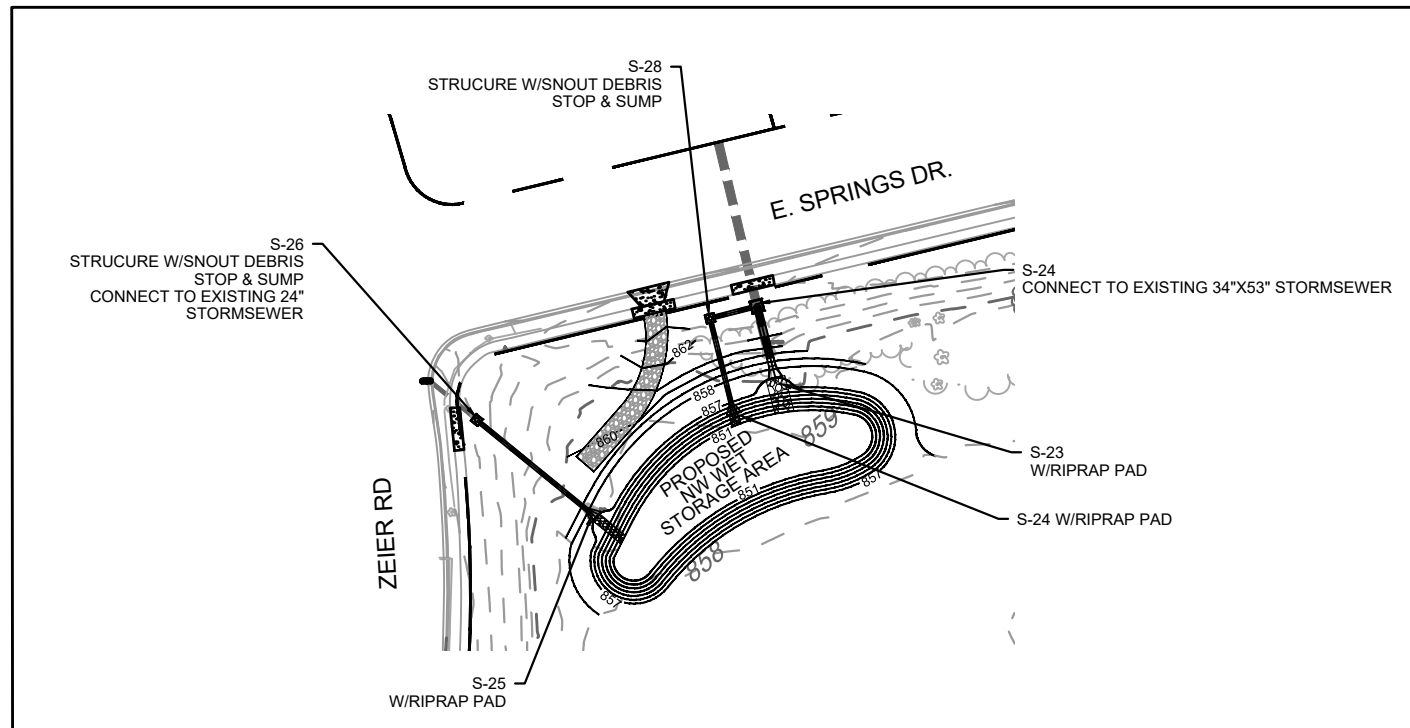


PROFILE VIEW
PROPOSED EAST TOWNE NW FOREBAY -
FLOATABLE REMOVAL SYSTEM (S26)
 NOT TO SCALE

NOTE: PIPE ORIENTATION MAY BE SHOWN SKEWED IN DETAILS TO AID IN DESCRIPTION OF CATCH BASIN "SNOUT" LAYOUT. (SEE UTILITY PLAN FOR INVERT/RIM ELEVATIONS AND FIELD PIPE LAYOUT)



PROFILE VIEW
PROPOSED EAST TOWNE NW FOREBAY -
FLOATABLE REMOVAL SYSTEM (S28)
 NOT TO SCALE



PLAN VIEW
PROPOSED EAST TOWNE NW FOREBAY AREA - FLOATABLE REMOVAL SYSTEM

CONFIGURATION DETAIL

FRONT VIEW SIDE VIEW

SNOUT OIL-WATER-DEBRIS SEPARATOR

TYPICAL INSTALLATION

SEE NOTE*

*NOTE: SUMP DEPTH OF 30" MIN. FOR UP TO 12" ID PIPE. OUTLET, FOR PRESS UP TO 150 PSI. SUMP DEPTH OF 2.5 TO 3 TIMES PIPE ID RECOMMENDED (E.G., 3' DEEP for 24" PIPE)

NOTES:

- ALL HOODS AND TRAPS FOR CATCH BASINS AND WATER QUALITY STRUCTURES SHALL BE AS MANUFACTURED BY: BEST MANAGEMENT PRODUCTS, INC., 9 MATTHEWS DRIVE, UNIT A-42, EAST HADDAM, CT 06423. TOLL FREE: (800) 504-6008 OR (888) 434-0277, FAX: (877) 434-3107. WEB SITE: www.bmpinc.com OR PRE-APPROVED EQUAL.
- ALL HOODS SHALL BE CONSTRUCTED OF A GLASS REINFORCED RESIN COMPOSITE WITH ISO GEL COAT EXTERIOR FINISH WITH A MINIMUM 0.125" LAMINATE THICKNESS.
- ALL HOODS SHALL BE EQUIPPED WITH A WATER TIGHT ACCESS PORT, A MOUNTING FLANGE, AND AN ANTI-SIPHON VENT PIPE AND ELBOW AS DRAWN. (SEE CONFIGURATION DETAIL).
- THE SIZE AND POSITION OF THE HOOD SHALL BE DETERMINED BY OUTLET PIPE SIZE AS PER MANUFACTURER'S RECOMMENDATION (SNOUT SIZE ALWAYS LARGER THAN PIPE SIZE).
- THE BOTTOM OF THE HOOD SHALL EXTEND DOWNWARD A MINIMUM DISTANCE EQUAL TO 1/2 THE OUTLET PIPE DIAMETER WITH A MINIMUM DISTANCE OF 5" FOR PIPES <12" I.D.
- THE ANTI-SIPHON VENT SHALL EXTEND ABOVE HOOD BY MINIMUM OF 3" AND A MAXIMUM OF 12" ACCORDING TO STRUCTURE CONFIGURATION.
- THE SURFACE OF THE STRUCTURE WHERE THE HOOD IS MOUNTED SHALL BE FINISHED SMOOTH AND FREE OF LOOSE MATERIAL AND PIPE SHALL BE FINISHED FLUSH TO WALL.
- ALL STRUCTURE JOINTS SHALL BE WATER TIGHT.
- THE HOOD SHALL BE SECURELY ATTACHED TO STRUCTURE WALL WITH 1/2" STAINLESS STEEL BOLTS AND OIL-RESISTANT GASKET AS SUPPLIED BY MANUFACTURER, (SEE INSTALLATION DETAIL).
- INSTALLATION INSTRUCTIONS SHALL BE FURNISHED WITH MANUFACTURER SUPPLIED INSTALLATION KIT. INSTALLATION KIT SHALL INCLUDE:
 - INSTALLATION INSTRUCTIONS
 - PVC ANTI-SIPHON VENT PIPE AND ADAPTER
 - OIL-RESISTANT CRUSHED CELL FOAM GASKET WITH PSA BACKING
 - 3/8" STAINLESS STEEL BOLTS
 - ANCHOR SHIELDS

INSTALLATION DETAIL

INSTALLATION NOTE: POSITION HOOD SUCH THAT BOTTOM FLANGE IS A DISTANCE OF 1/2 OUTLET PIPE DIAMETER (MIN) BELOW THE PIPE INVERT, MINIMUM DISTANCE FOR PIPES <12" I.D. IS 5".

HOOD SPECIFICATION FOR CATCH BASINS AND WATER QUALITY STRUCTURES

DESCRIPTION	DATE	SCALE
OIL-DEBRIS HOOD SPECIFICATION AND INSTALLATION (TYPICAL)	09/08/18	NONE
	DRAWING NUMBER	SP-SN

US Patent # 6126817, 7951294, 7857966, 8512556
 Canada Patent # 2285146, 2690156, 2690156 others pending

MARK	REVISION	DATE	BY

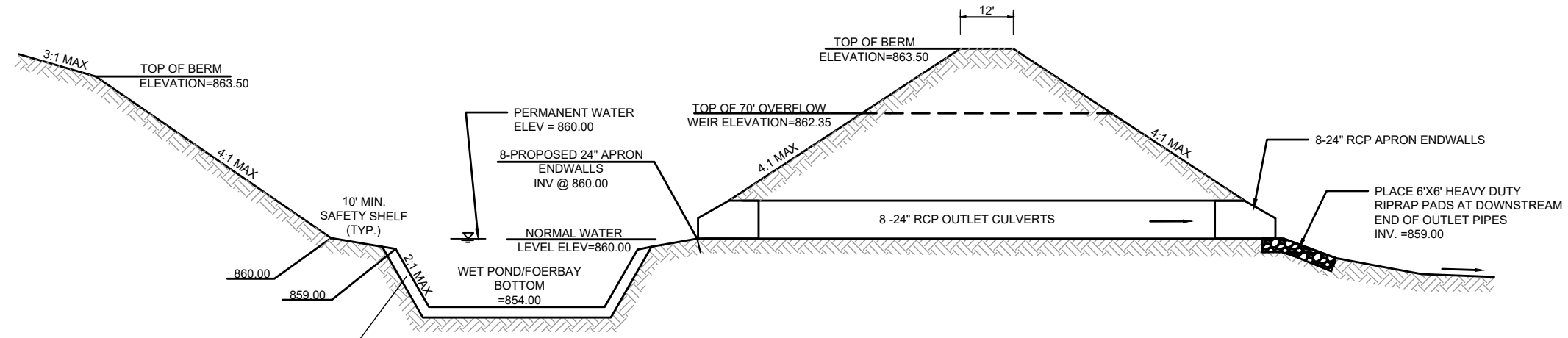
Designed By: _____ Date: 10/3/2022 4:16 PM Scale: 1" = 100'

11066
 1801 ZEIER RD, MADISON, WI
 CONTRACT NO: _____

NW WET STORAGE FLOATABLE REMOVAL SYSTEM
 EAST TOWNE POND
 M:\DESIGN\Projects\11066\CAD\Drawings\11066 East Town Deletion Basin.dwg

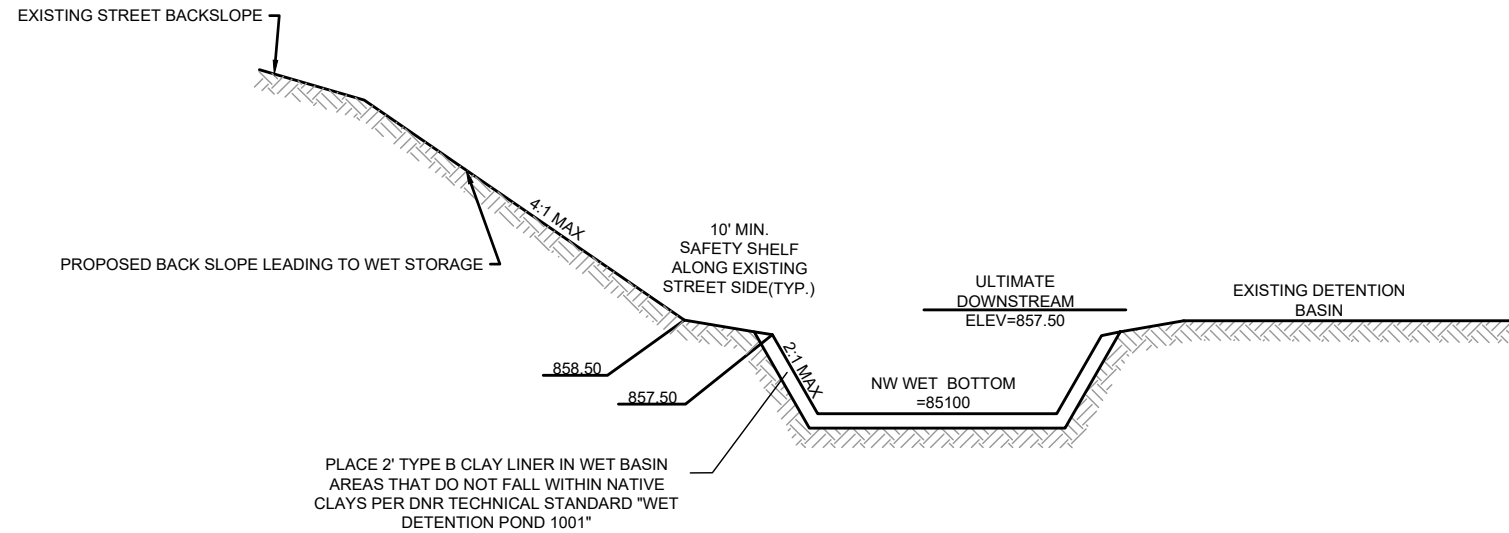


11066
 D2



PROFILE VIEW

PROPOSED EAST TOWNE NE WET DETENTION BASIN AREA
NOT TO SCALE



PROFILE VIEW

PROPOSED EAST TOWNE NW WET STORAGE AREA
NOT TO SCALE

PROPOSED NE DETENTION BASIN & NW WET AREA CROSS SECTION
11066

EAST TOWNE POND
1801 ZEIER RD, MADISON, WI

M:\DESIGN\Projects\11066\CAD\Sewers\11066 East Town Detention Basin.dwg

CONTRACT NO: ----



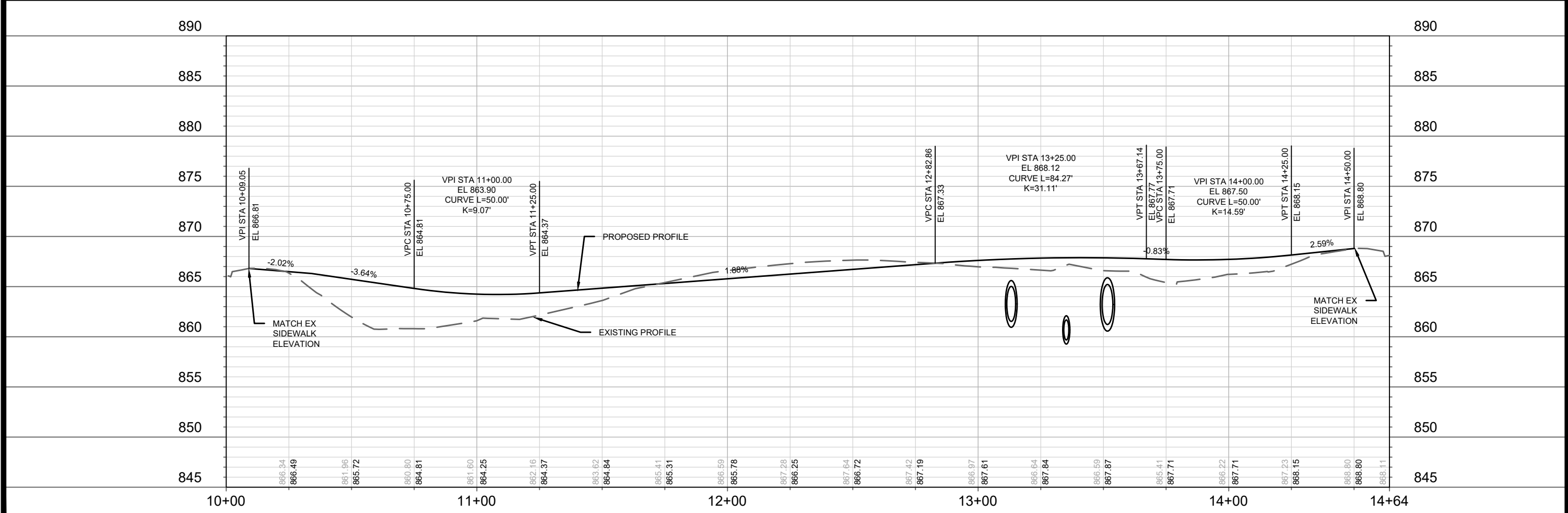
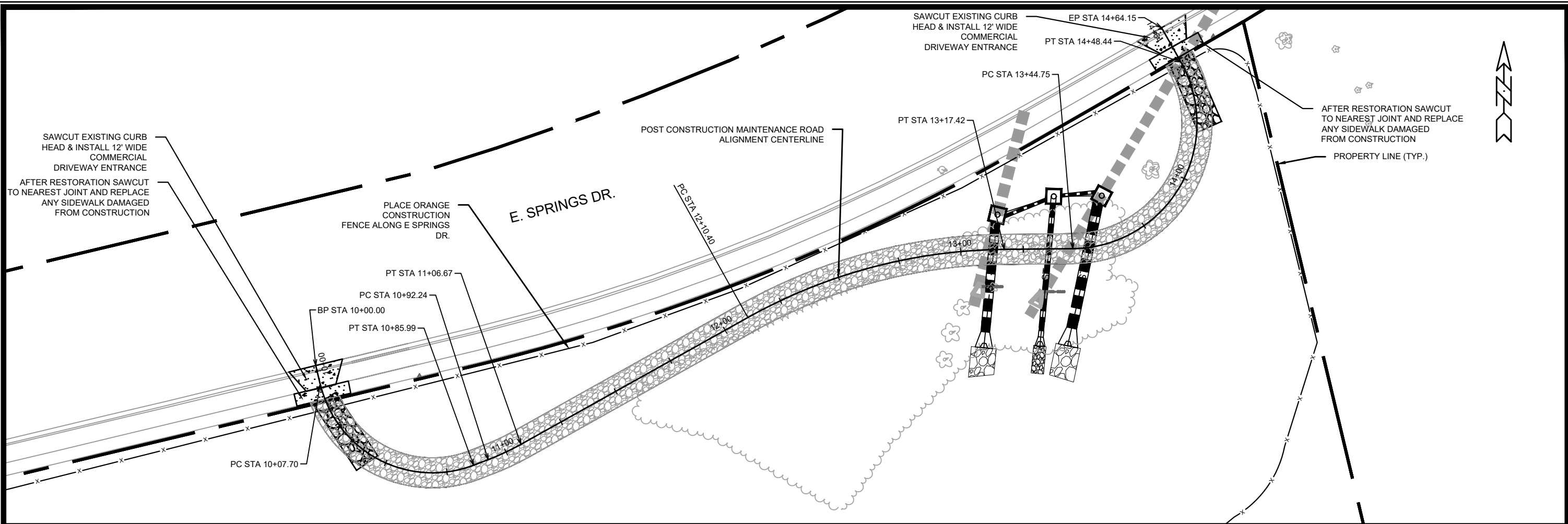
11066

D3

MARK	REVISION	DATE	BY

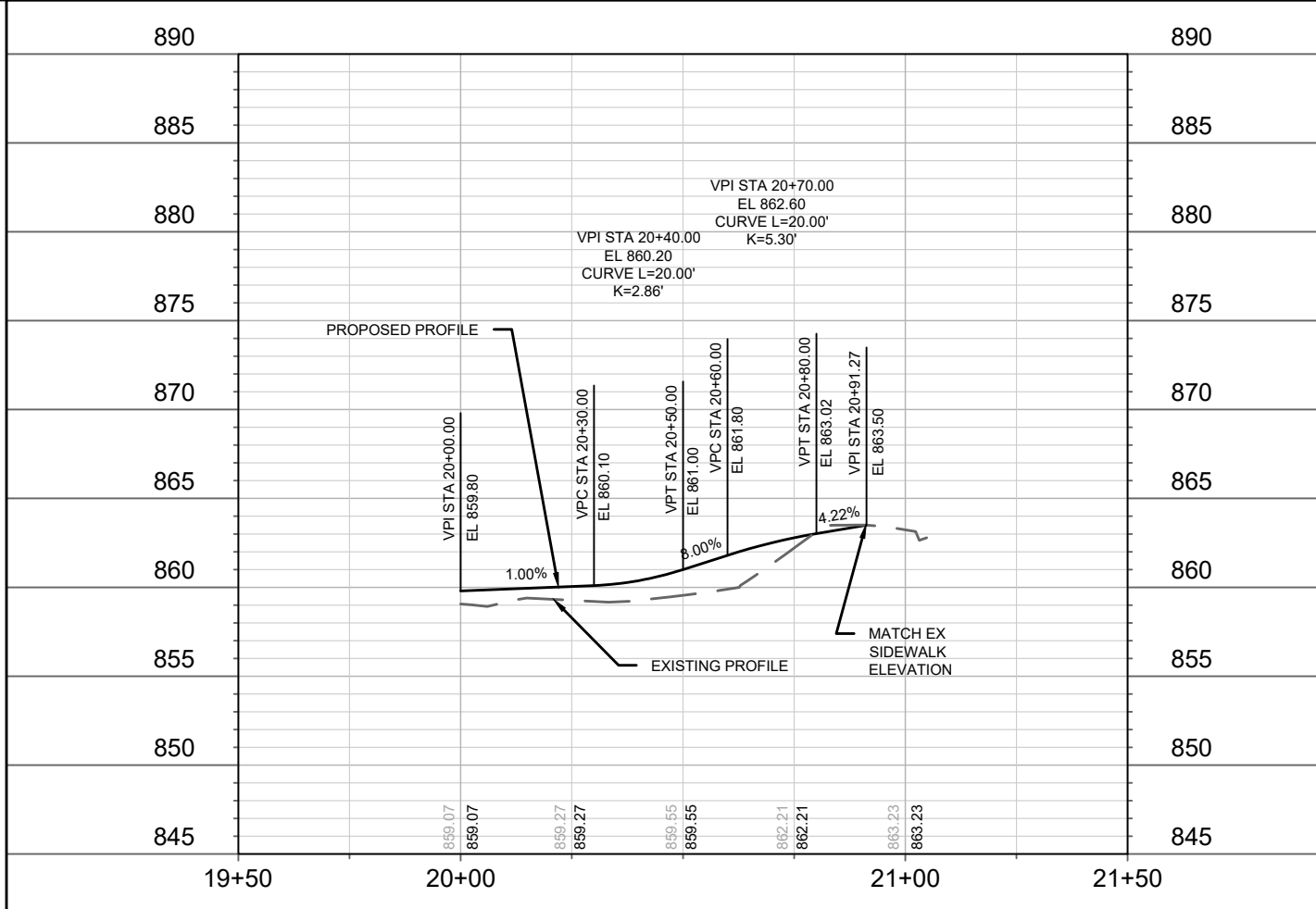
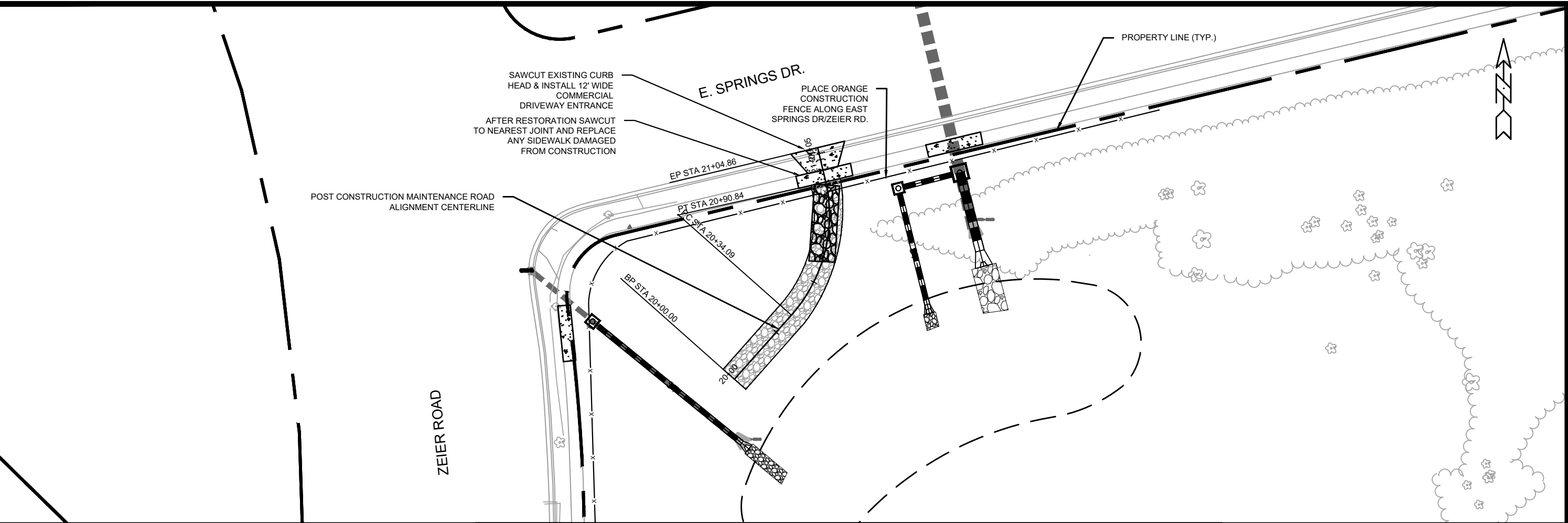
Designed By: ---
Date: 10/3/2022 4:15 PM
Scale: 1" = 100'

D2



MARK	REVISION	DATE	BY	
11066		10/3/2022 4:16 PM		P1
Scale: 1" = 40'				
Designed By: ##				
Contract No: 9437				
11066				
1801 ZEIER ROAD, MADISON, WI				
NORTH EAST MAINTENANCE ACCESS ROAD PLAN AND PROFILE				
EAST TOWNE POND				
M:\DESIGN\Projects\11066\CAD\Sewers\11066 East Town Detention Basin.dwg				
11066				
P1				





MARK	REVISION	DATE	BY
11066			
Designed By: GVP	Date: 10/3/2022 4:16 PM	Scale: 1" = 40'	P2

11066
 NORTHWEST MAINTENANCE ACCESS ROAD PLAN AND PROFILE
 EAST TOWNE POND
 1801 ZEIER RD, MADISON, WI
 CONTRACT NO: 9437



11066
 P2

M:\DESIGN\Projects\11066\CAD\Sewers\11066 East Town Detention Basin.dwg