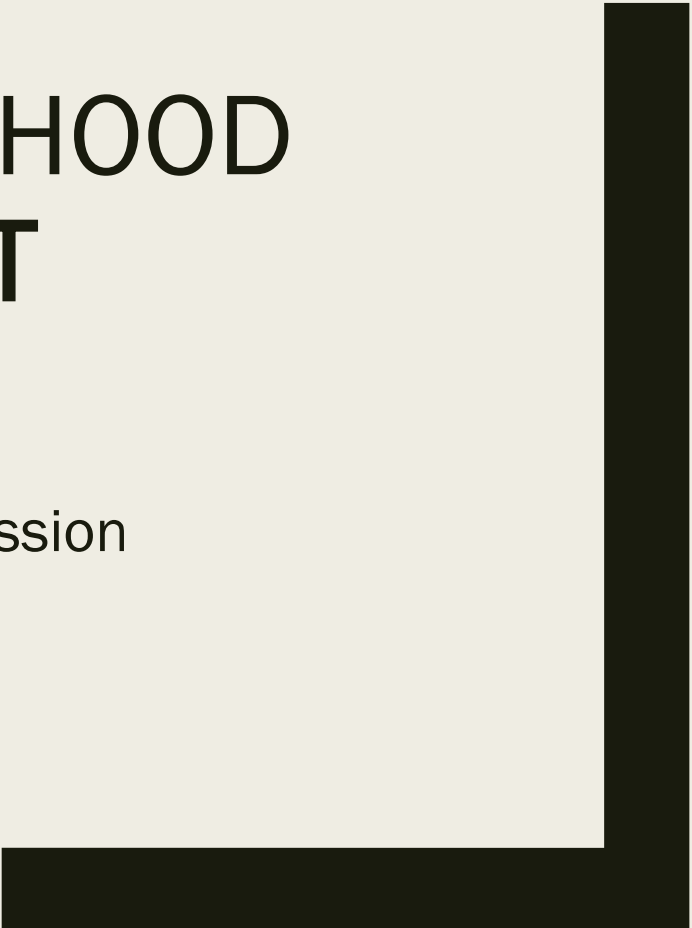




EKEN PARK NEIGHBORHOOD GATEWAY PROJECT

Presented to the Madison Arts Commission
Tuesday, July 10, 2018



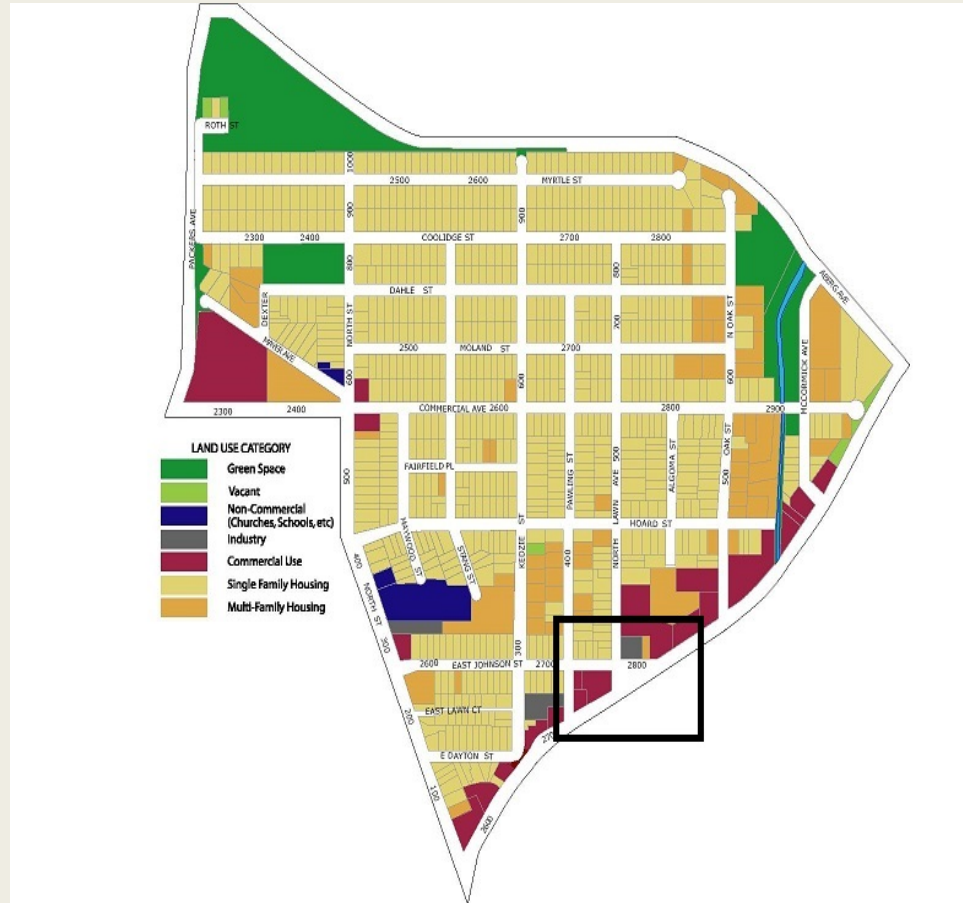
Gateway Project Timeline:

- 2015-2017 – Eken Park Sign and Butterfly Sculpture Garden (DPCED Grant)
- February 2017 – Eken Park Neighborhood Association forms Placemaking Committee
- March 29, 2017 – Meeting with Linda Horvath (DPCED) to discuss gateway project
- April 2017 – City of Madison DPCED approves \$2500 grant for gateway project
- July 18, 2017 – Meeting with DPCED to discuss plans for gateway project
- January 19, 2018 – Meeting with Linda Horvath to discuss additional funds for gateway project
- March 2018 – City of Madison DPCED approves grant for additional \$5000 for gateway project
- May 10, 2018 – Meeting with Linda Horvath and design staff for latest gateway design plans
- May 22, 2018 – Meeting with Karin Wolf (Arts Program Administrator)
- July 10, 2018 – Presentation to Madison Arts Commission

Eken Park Sign and Butterfly Sculpture Garden 2015-17



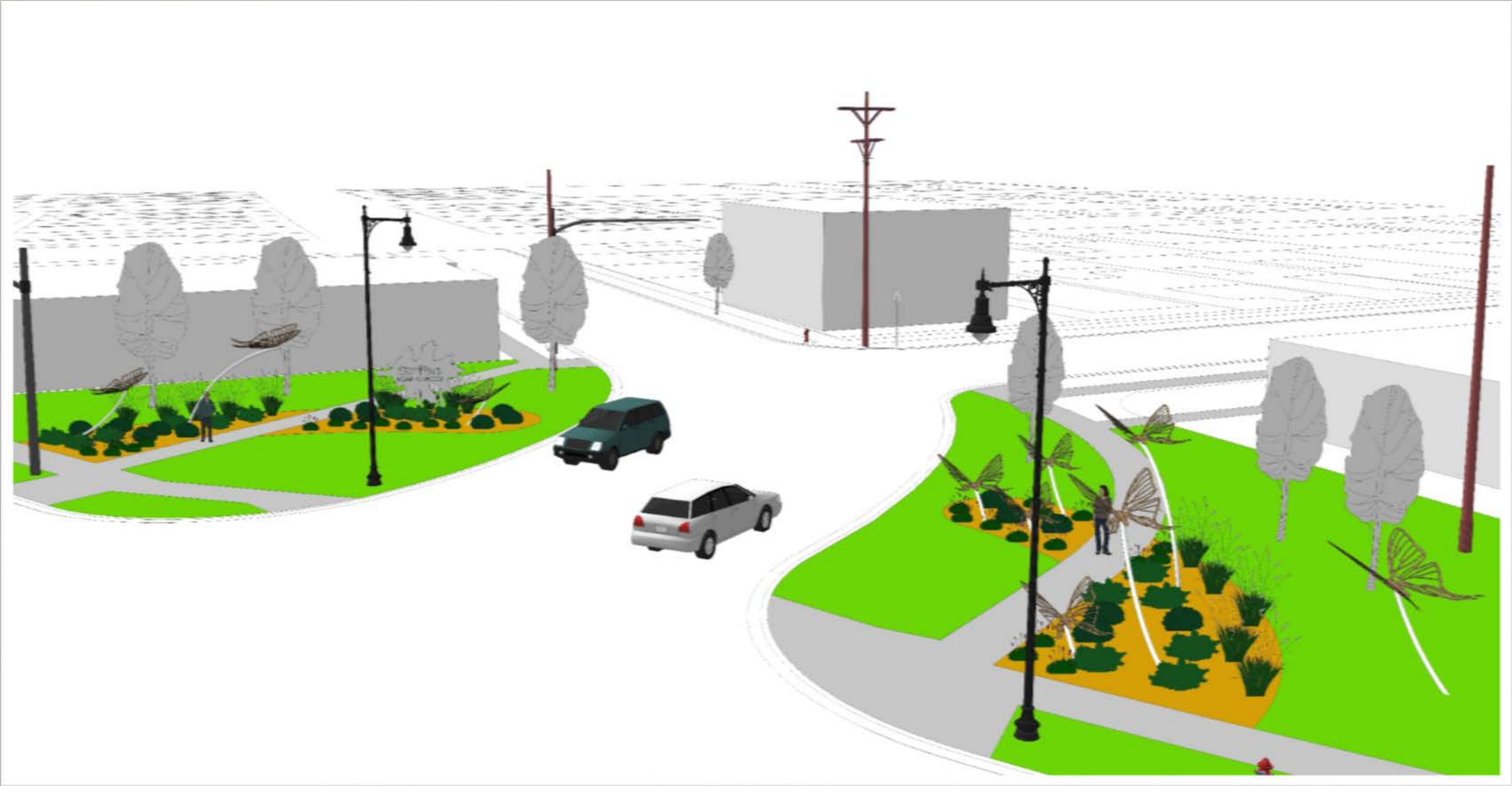
Site of future Gateway Project



Current Site of Gateway Project



Future Gateway Design



Phase 1 (Fall 2018): Welcome Sign

Funded by City of Madison DPCED "Neighborhood Grant" (\$7500)



Current Welcome Sign



Future Welcome Sign

Phase 2 (Spring 2019): Butterfly Sculptures on West Corner

Funded by AIPP Grant (\$4500)



Phase 3 (Summer/Fall 2019): Butterfly Sculptures on East Corner

Funded by AIPP Grant (\$10,500)



Phase 4 (Spring 2020): Landscaping

Funded by Eken Park Neighborhood Association (\$5000)



Current Landscaping



Future Landscaping

Gateway Project Budget:

Eken Park Gateway Project Expenses			Eken Park Gateway Project Revenue	
Eken Park Welcome Sign			City of Madison DPCED Neighborhood Grant	\$7,500
	Materials	\$375		
	Labor	\$5,200		
	Footings	\$2,250		
	Installation	\$470		
	TOTAL:	\$8,295		
Butterfly Sculptures			City of Madison MAC Arts in Public Places Grant	\$15,000
	Materials	\$750		
	Labor	\$10,400		
	Footings	\$4,500		
	Installation	\$940		
	TOTAL:	\$16,590		
Landscaping			Eken Park Neighborhood Association Donation	\$3,000
	Plants	\$2,500	Eken Park Fest Fundraiser	\$2,500
	Labor	\$2,500	Sponsor a Sculpture Fundraiser	\$1,000
	TOTAL:	\$5,000	EPNA Volunteering (in kind)	\$1,000
	TOTAL PROJECT COST:	\$29,885	TOTAL REVENUE:	\$30,000