

Northeast Interceptor Joint Grouting: MH10-106 to MH10-101 Project



Public Hearing for Noise Variance

November 17, 2021

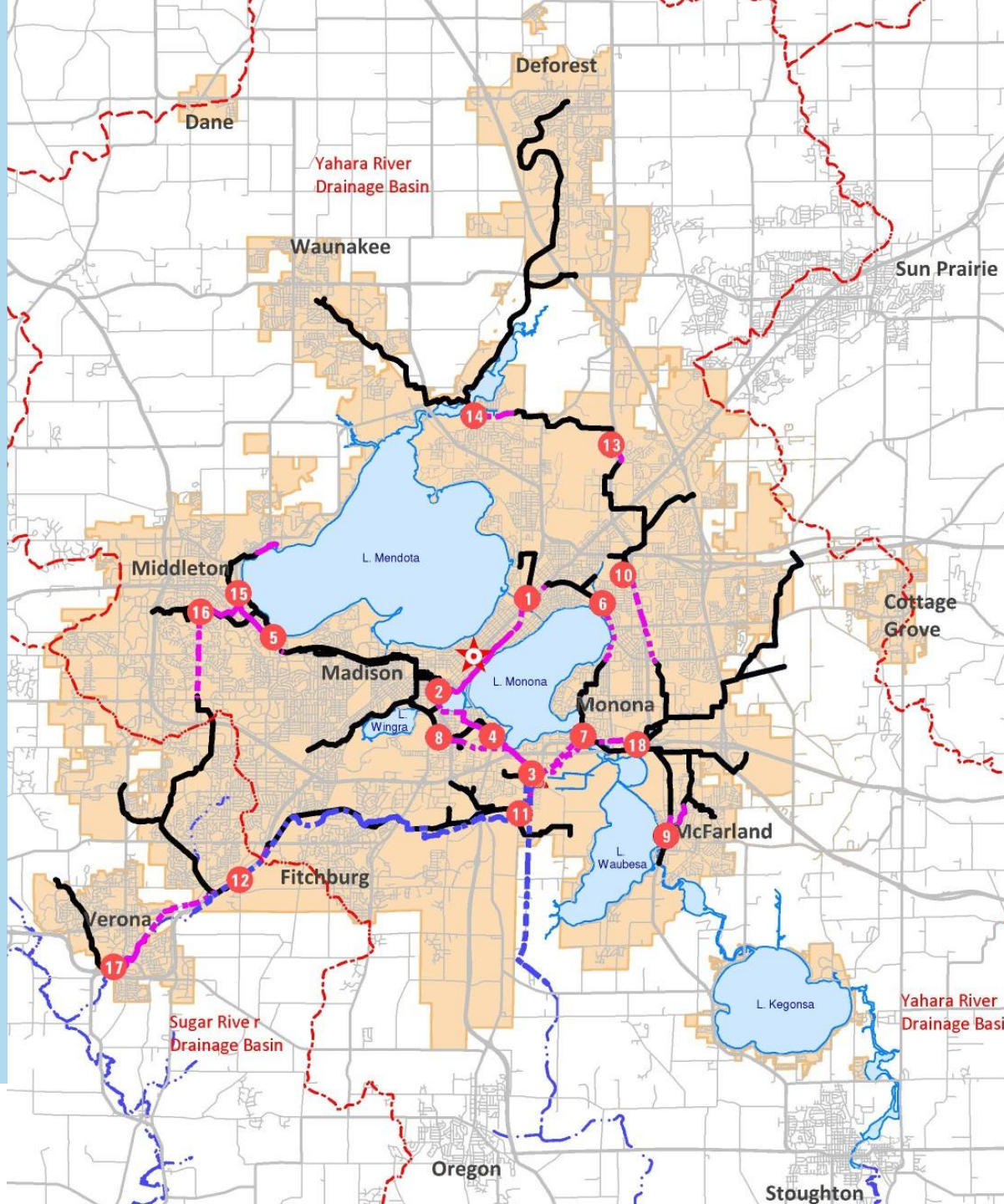
5 PM

**City of Madison Board of
Public Works**

Madison Metropolitan Sewerage District

About the District

- Established in 1930
- Regional provider for 26 communities
- 380,000 people
- 184 square miles
- 142 miles of pipe
- 41 million gallons per day on average

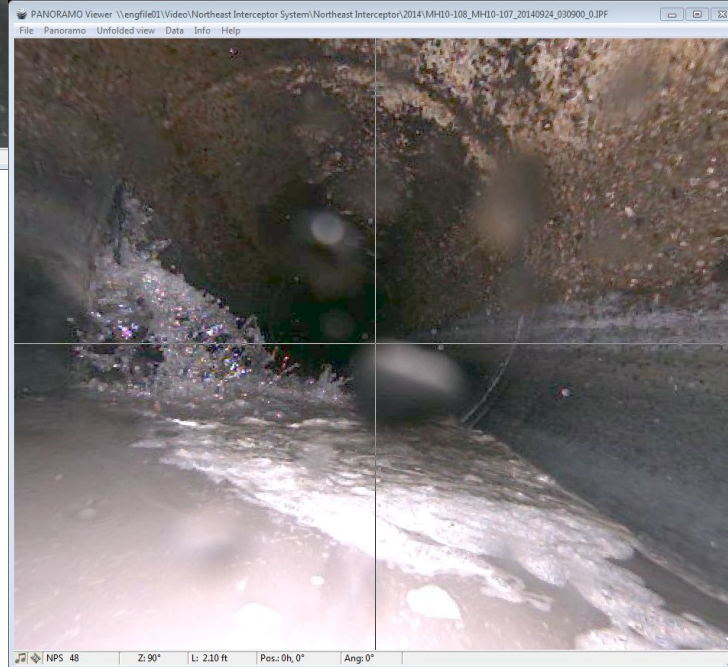
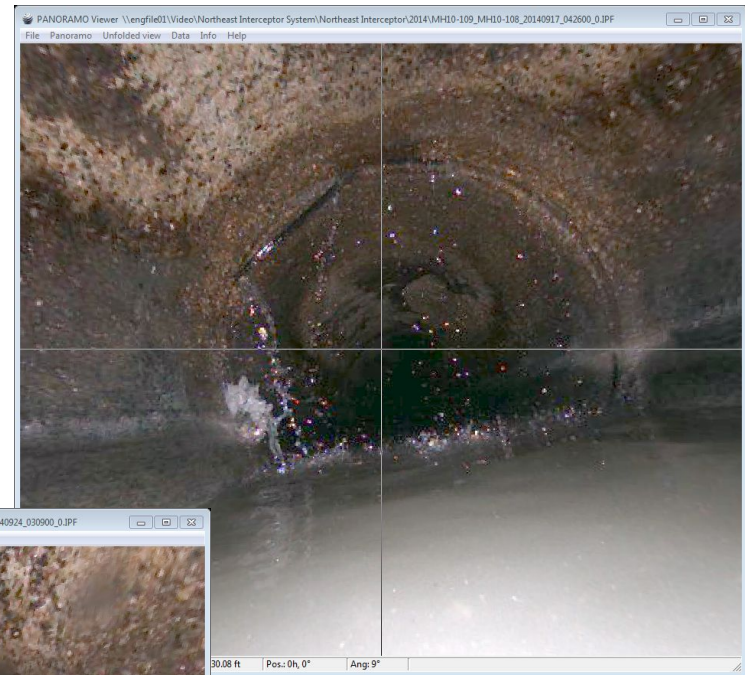
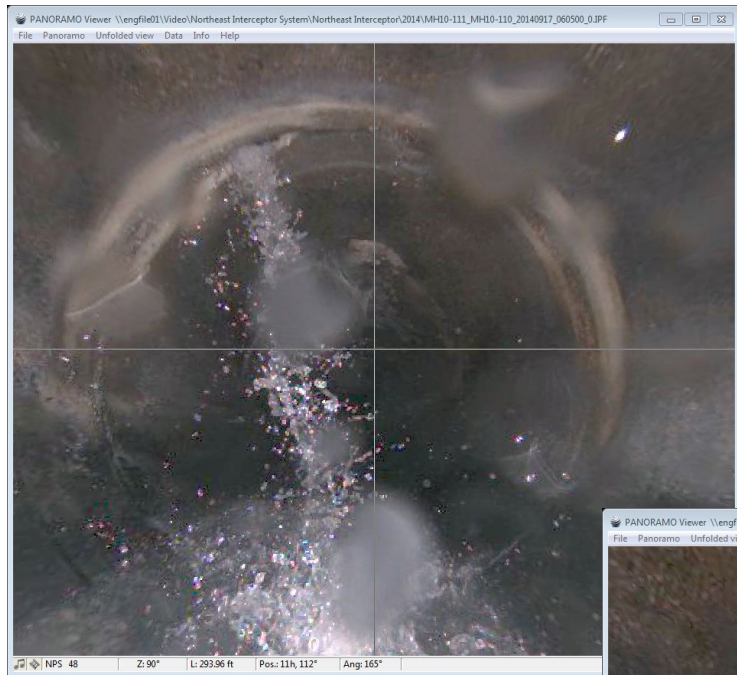


Background on the Northeast Interceptor

- Existing sewer constructed in 1964
- 48" diameter reinforced concrete pipe
- Inflow/Infiltration present at pipe joints



Project Location and Scope



Project Video: Before

NAK005A TRL

10-412

12-108



Project Video: After

Upstream MH: MH10-412
Downstream MH: MH10-108
Date: 10/30/2020



Tentative Schedule

- Select Tree & Brush Clearing in December
- Noise Variance work starting in January
- Completion in May



Why is a noise variance needed?

- The flow levels in the interceptor are too high between 7:00 AM to 7:00 PM to complete the work. Off-hour work will take advantage of low diurnal flows in the evening and early morning time periods.

What night work is anticipated?

- Access to manhole structures, including televising & cleaning and joint grouting.

Where might this occur?

- At “access manholes” in the previous map



Traffic Impacts

- Marsh View Path to Remain Open, advance caution/project signage to be installed
- Truck access at access manholes



Questions?



For questions please contact:

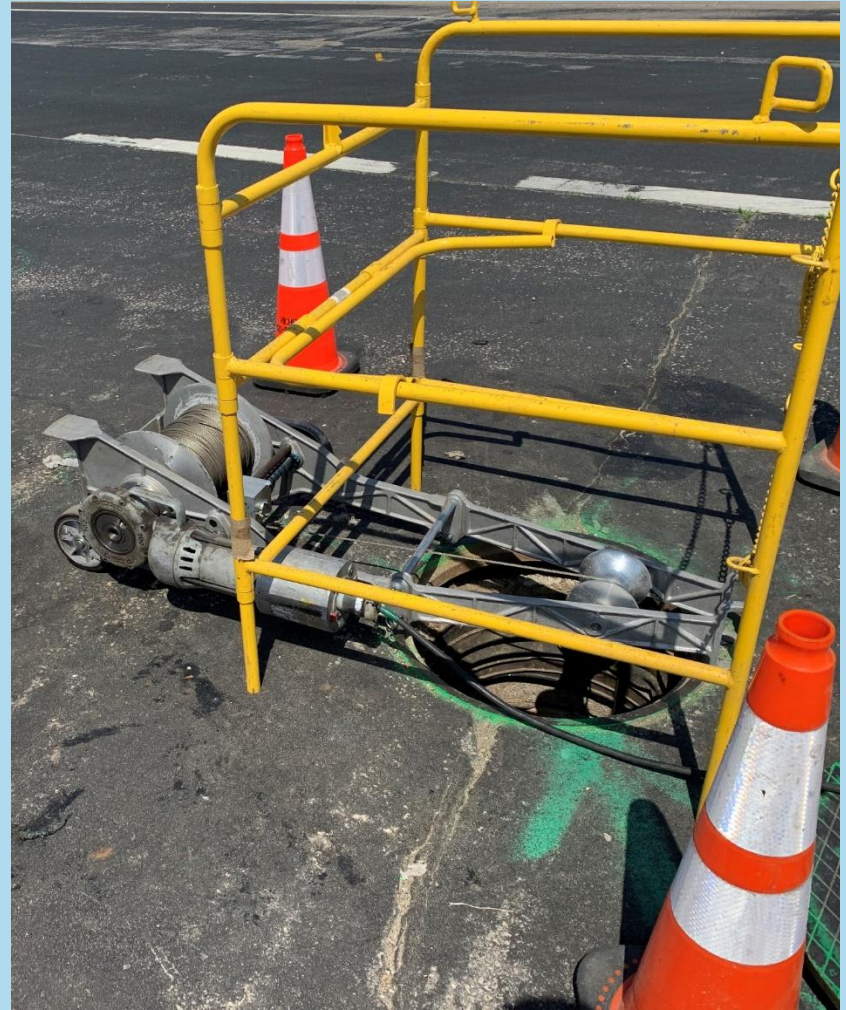
Rachel Feil

Madison Metropolitan Sewerage District, Project Manager

608-628-1214

rachelf@madsewer.org

Madison Metropolitan Sewerage District



Madison Metropolitan Sewerage District





Hwy 30

Tree Removal & Clearing and Grubbing Area shown in shaded red.

Hwy 151

Tree Removal & Clearing and Grubbing Area shown in shaded red.

Blether Blvd

Tree Removal & Clearing and Grubbing Area shown in shaded red.

Tree Removal & Clearing and Grubbing Area shown in shaded red.

CAUTION CONSTRUCTION AHEAD

Madison Metropolitan Sewerage District

Madison Metropolitan Sewerage District's Northeast Interceptor Joint Grouting MH10-106 to MH10-101 project plans to joint grout a sanitary sewer adjacent to the Marsh View Bike Path. This project will rehabilitate existing infrastructure to continue to serve the needs of the community. **Work is anticipated to start in December 2021 and be complete in May 2022.**

Routine inspection revealed joints are suffering from inflow/infiltration, which means groundwater is getting into the sewer system. The project will use a trenchless technology known as joint grouting to minimize disturbance and help preserve the integrity of this sewer for use in the future.

The Marsh View Pike Bath is anticipated to remain open during this work. Path users should be aware of construction activity and should use caution while in the area.

For more information scan the QR code or visit:
<https://www.madsewer.org/Projects/NEIJointGrouting>



Questions? Call the District at 608-222-1201.

