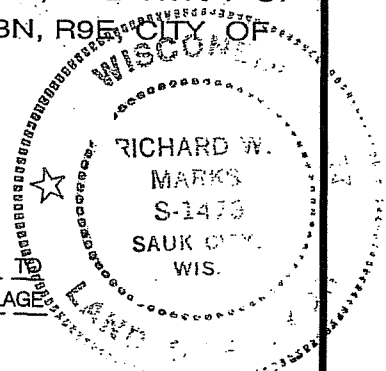


NORTHPORT DRIVE

CERTIFIED SURVEY MAP NO.

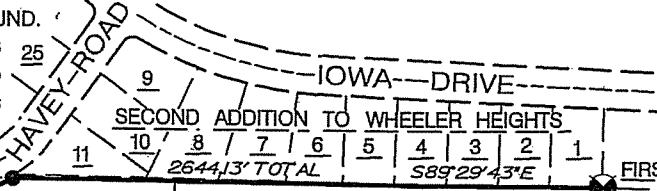
LOCATED IN THE NE 1/4 OF THE SW 1/4, THE SE 1/4 OF THE SW 1/4, THE NW 1/4 OF THE SE 1/4 AND THE SW 1/4 OF THE SE 1/4 OF SECTION 25, T8N, R9E CITY OF MADISON, DANE COUNTY, WISCONSIN.



WEST 1/4 CORNER OF SECTION 25
4.00' SOUTH OF P.K. NAIL FOUND.
DANE COUNTY COORDINATES

N 507016.40
E 821480.86

(S89°29'43"E)
S89°29'43"E



FIRST ADDITION TO SHERMAN VILLAGE

0' 300' 300'
SCALE 1" = 300'

- "A" - S19°37'W 274.20'
- "B" - S88°51'22"E 205.84'
- "C" - S1°32'40"W 126.27'
- "D" - S89°13'57"E 40.00'
- "E" - S1°33'51"W 174.59'
- "F" - N88°56'48"W 29.94'
- "G" - N1°32'40"E 20.47'
- "H" - N89°18'02"W 215.89'
- "I" - S89°04'30"E 185.36'
- "J" - S1°39'00"W 299.57'
- "K" - S88°53'15"E 60.06'

LOT 1
2107132 Sq. Ft. - 48.37 Acres.
HANOVER PLAT

THESE LOTS AND THIS PART OF HANOVER PLAT WERE VACATED - VOLUME 86, PAGE 207

C
CENTRAL ANGLE - 23°04'48"
ARC LENGTH = 80.56
RADIUS = 200.00
LONG CHORD = N 70°19'51" E 80.02
TANGENT BEARINGS = N 58°47'27" E
& N 81°52'15" E

EASEMENT TO CITY OF MADISON DOCUMENT NO. 2909070
SEE DETAIL ON PAGE 2

NE-SW

VACATED HANOVER STREET

SE-SW

KENWOOD ESTATES

VACATED - VOLUME 352
MISC. PAGE 203

LAKE VIEW HEIGHTS

LAKE VIEW HEIGHTS

LAKE VIEW HEIGHTS

SW-SE

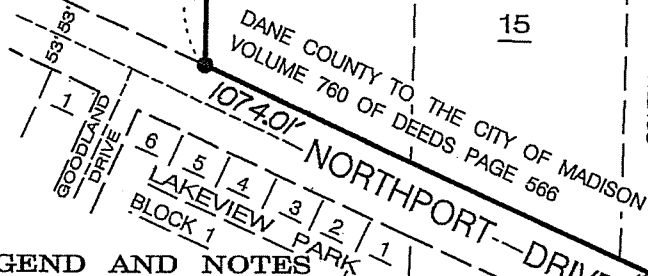
DREWRY-LANE

"K" = (N89°37'E 60.0')

BRASS CAP IN CONCRETE AT THE SOUTHWEST CORNER OF SECTION 25
DANE COUNTY COORDINATES
N 504363.10
E 821414.47

DANE COUNTY TO THE CITY OF MADISON
VOLUME 760 OF DEEDS PAGE 566

SOUTH 1/4 CORNER TO CENTER 1/4 CORNER - N1°28'58"E 2654.25'
WATER MAIN AND BOOSTER PUMP EASEMENT TO THE CITY OF MADISON - DOCUMENT 1249251 (NORTH)



LEGEND AND NOTES

- DENOTES 3/4" X 24" SOLID ROUND IRON ROD WEIGHING 1.50 LBS. PER LINEAL FOOT SET.
- DENOTES 1" INSIDE DIAMETER IRON PIPE FOUND UNLESS OTHERWISE NOTED.
- ⊗ DENOTES 14" INSIDE DIAMETER IRON PIPE FOUND.
- DENOTES 1" SOLID ROUND IRON ROD FOUND.

1.) BEARINGS ARE GRID BASED ON THE DANE COUNTY COORDINATE SYSTEM DESIGNED BY THE WISCONSIN DEPARTMENT OF TRANSPORTATION. NAD 83 (97). THE WEST LINE OF THE SW 1/4 OF SECTION 25 BEARS N1°25'59"E.
2.) WHEN DIFFERENT RECORDED BEARINGS AND DISTANCES ARE SHOWN IN PARENTHESES.

PREPARED FOR:
32 DANE COUNTY LAND & WATER RESOURCES DEPARTMENT
1 FEN OAK COURT - ROOM 223
MADISON, WISCONSIN 53718-8812
BRASS CAP IN CONCRETE AT THE SOUTH 1/4 CORNER OF SECTION 25
DANE COUNTY COORDINATES
N 504339.74
E 824056.19