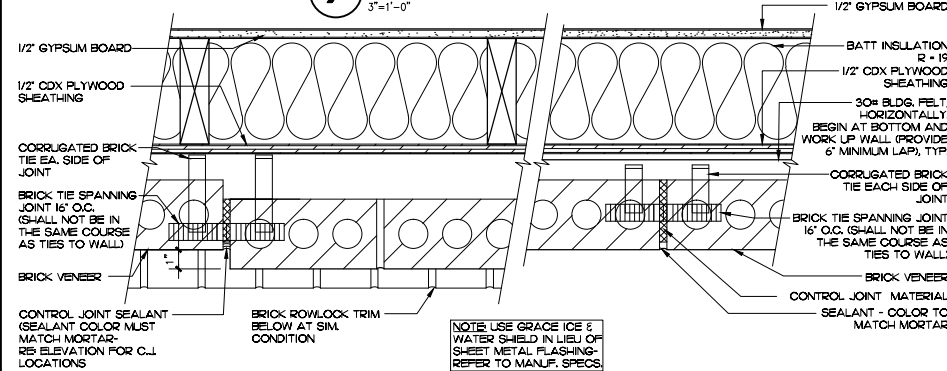
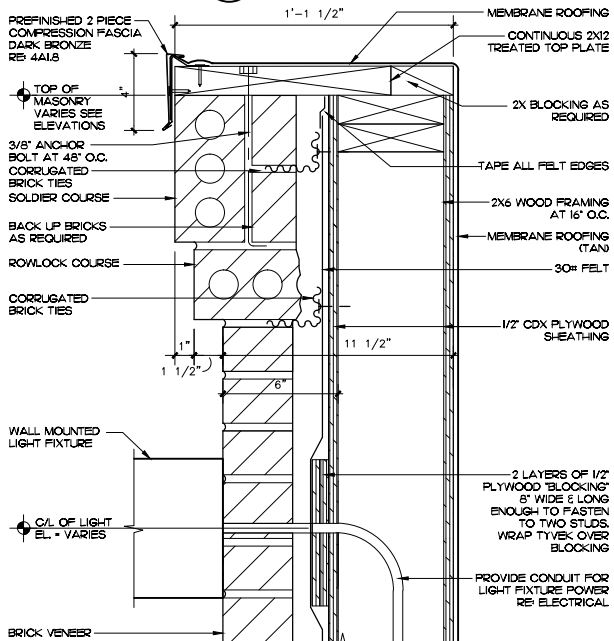


7 ROOF EDGE DETAIL
3"=1'-0"

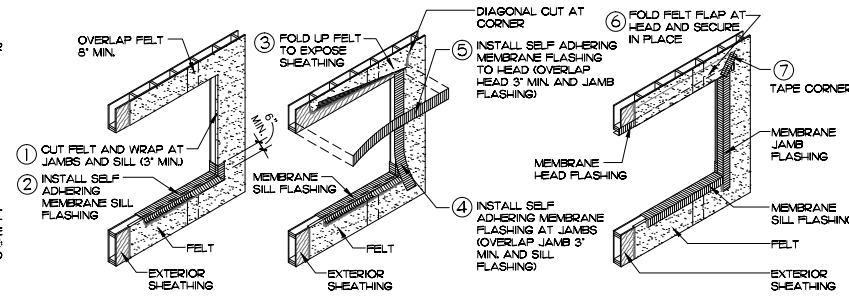


5 BRICK PILASTER DETAIL
3"=1'-0"

4 BRICK CONTROL JOINT DETAIL
3"=1'-0"



3 PARAPET DETAIL
3"=1'-0"

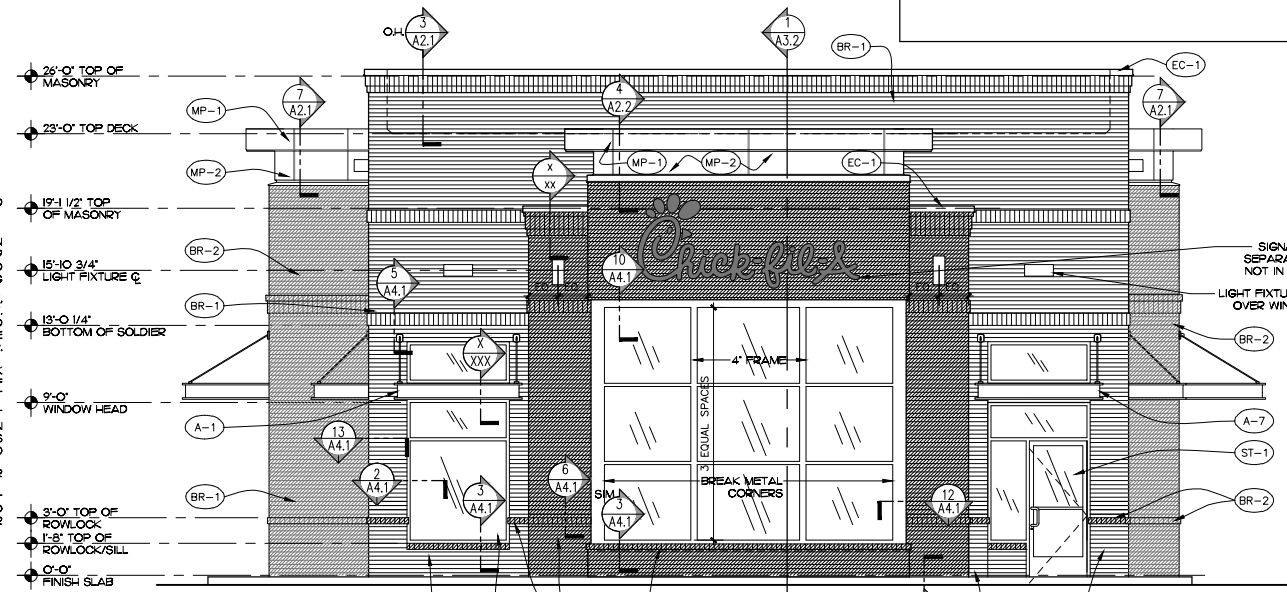


6 STOREFRONT FLASHING
NOT TO SCALE

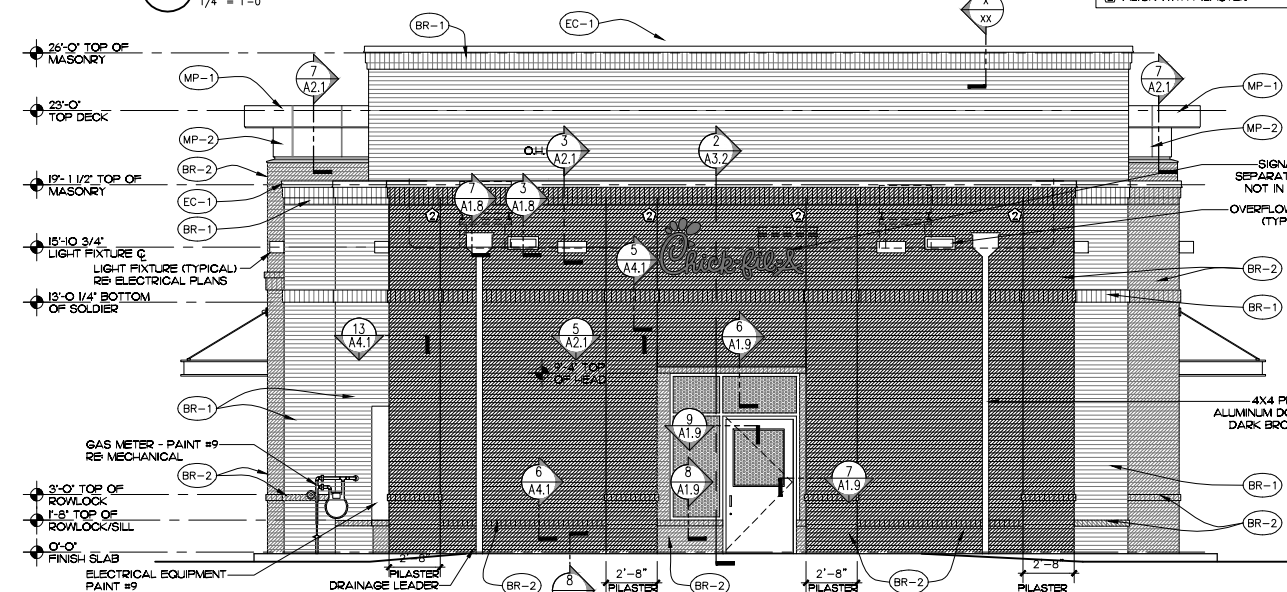
EXTERIOR FINISHES - FOR STOREFRONT GLAZING - SEE GLASS SCHEDULE & INTERIOR ELEVATIONS

BR-1	BRICK # 1 (MODULAR SIZE) GENERAL SHALE BRICK - RED VELOUR ACME EQUIVALENT - CRIMSON	A-1	ALUMINUM AWNING - LOUVERED COLOR - DARK BRONZE SIZE - 5'-4" LENGTH x 3'-0" DEPTH
BR-2	BRICK # 2 (MODULAR SIZE) GENERAL SHALE BRICK - SILVERSTONE ACME EQUIVALENT - MISSION BLEND 1	A-2	ALUMINUM AWNING - LOUVERED COLOR - DARK BRONZE SIZE - 27'-8" LENGTH x 3'-0" DEPTH
ST-1	STOREFRONT YKK - YES 45 COLOR - DARK BRONZE (MAITE)	A-3	ALUMINUM AWNING - COVERED COLOR - DARK BRONZE SIZE - 8'-0" LENGTH x 4'-6" DEPTH
EC-1	PARAPET WALL COPING DUROLAST/ EXCEPTIONAL METALS - COLOR - DARK BRONZE	A-4	ALUMINUM AWNING - LOUVERED COLOR - DARK BRONZE SIZE - 22'-4" LENGTH x 3'-0" DEPTH
MP-1	ALUMINUM FASCIA & SOFFIT DUROLAST/ EXCEPTIONAL METALS - DARK BRONZE (ALTERNATE: REGAL RED)	A-5	ALUMINUM AWNING - COVERED COLOR - DARK BRONZE SIZE - 7'-4" LENGTH x 4'-6" DEPTH
MP-2	ALUMINUM FASCIA DUROLAST/ EXCEPTIONAL METALS - COLOR - SIERRA TAN	A-6	ALUMINUM AWNING - LOUVERED COLOR - DARK BRONZE SIZE - 38'-11" LENGTH x 3'-0" DEPTH
PT-9	PAINT #9 SHERWIN WILLIAMS - SHER-CRYL HIGH PERFORMANCE ACRYLIC #B66-350 COLOR - DARK BRONZE (SEMI-GLOSS)	A-7	ALUMINUM AWNING - COVERED COLOR - DARK BRONZE SIZE - 5'-4" LENGTH x 3'-0" DEPTH

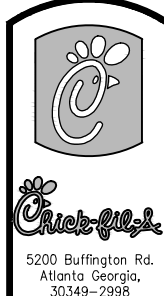
NOTE:



1 FRONT ELEVATION
1/4" = 1'-0"



2 REAR ELEVATION
1/4" = 1'-0"



2500 Buffington Rd.
Atlanta Georgia,
30349-2998

Revisions:
Mark Date By
4.24.2014

ISSUED FOR
PERMIT & BID

Mark Date By

Mark Date By

Seal

I HEREBY CERTIFY THAT THESE PLANS HAVE BEEN PREPARED BY ME OR BY AN ENGINEER, ARCHITECT, OR LANDSCAPE ARCHITECT REGISTERED IN THE STATE OF GEORGIA AND I AM A LICENSED PROFESSIONAL ENGINEER.

Chipman Design
ARCHITECTURE & INTERIOR DESIGN
1000 W. BROAD ST. SUITE 100
ATLANTA, GA 30308

STORE #3352
West Towne Mall
FSU 508

432 S. Gammon Rd
Madison, WI 53703

SHEET TITLE
EXTERIOR
ELEVATIONS

VERSION: V8.6
ISSUE DATE: 3-2014

Job No. : 13-5018
Store : 3352
Date : 04.24.14
Drawn By : MJS
Checked By: MJS

Sheet

A-21

EXTERIOR FINISHES - FOR STOREFRONT GLAZING - SEE GLASS SCHEDULE & INTERIOR ELEVATIONS			
BR-1	BRICK # 1 (MODULAR SIZE) GENERAL SHALE BRICK - RED VELOUR ACME EQUIVALENT - CRIMSON	A-1	ALUMINUM AWNING - LOUVERED COLOR - DARK BRONZE SIZE - 5'-4" LENGTH x 3'-0" DEPTH
BR-2	BRICK # 2 (MODULAR SIZE) GENERAL SHALE BRICK - SILVERSTONE ACME EQUIVALENT - MISSION BLEND 1	A-2	ALUMINUM AWNING - LOUVERED COLOR - DARK BRONZE SIZE - 27'-8" LENGTH x 3'-0" DEPTH
ST-1	STOREFRONT YKK - YES 45 COLOR - DARK BRONZE (MATTE)	A-3	ALUMINUM AWNING - COVERED COLOR - DARK BRONZE SIZE - 8'-0" LENGTH x 4'-6" DEPTH
EC-1	PARAPET WALL COPING DUROLAST/ EXCEPTIONAL METALS - COLOR - DARK BRONZE	A-4	ALUMINUM AWNING - LOUVERED COLOR - DARK BRONZE SIZE - 22'-4" LENGTH x 3'-0" DEPTH
MP-1	ALUMINUM FASCIA & SOFFIT DUROLAST/ EXCEPTIONAL METALS - DARK BRONZE (ALTERNATE: REGAL RED)	A-5	ALUMINUM AWNING - COVERED COLOR - DARK BRONZE SIZE - 7'-4" LENGTH x 4'-6" DEPTH
MP-2	ALUMINUM FASCIA DUROLAST/ EXCEPTIONAL METALS - COLOR - SIERRA TAIN	A-6	ALUMINUM AWNING - LOUVERED COLOR - DARK BRONZE SIZE - 38'-1" LENGTH x 3'-0" DEPTH
PT-9	PAINT #9 SHERWIN WILLIAMS - SHER-CRYL HIGH PERFORMANCE ACRYLIC #B66-350 COLOR - DARK BRONZE (SEMI-GLOSS)	A-7	ALUMINUM AWNING - COVERED COLOR - DARK BRONZE SIZE - 5'-4" LENGTH x 3'-0" DEPTH

NOTE:

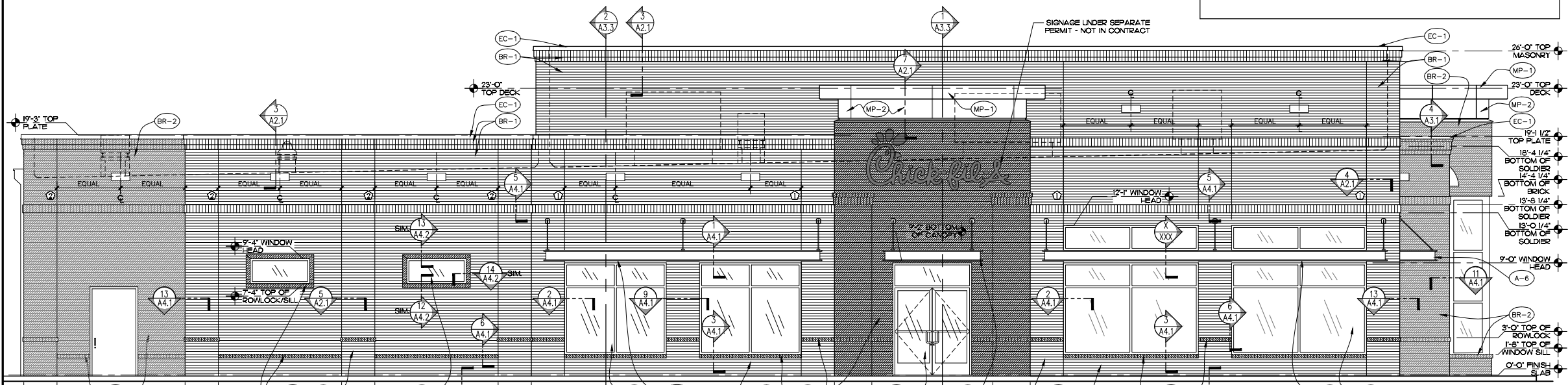


Revisions:

Mark	Date	By
△	04.24.2014	

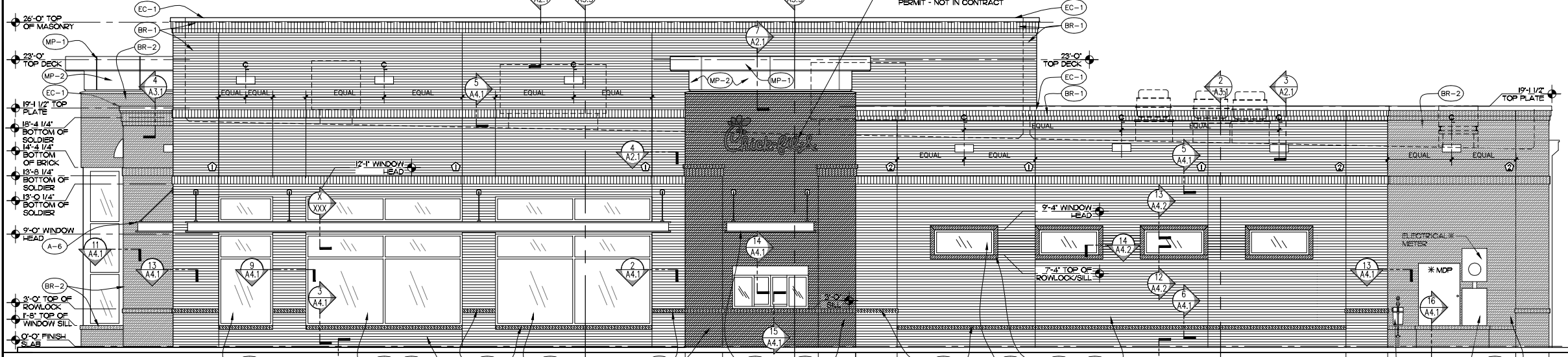
ISSUED FOR PERMIT & BID

Mark	Date	By
△		



1 SIDE ENTRY ELEVATION
1/4" = 1'-0"

BRICK JOINT LEGEND - RE: 4A21
CONTROL JOINTS
① ALIGN WITH JAMB
② ALIGN WITH PILASTER



2 DRIVE-THRU ELEVATION
1/4" = 1'-0"

NOTE:
*ALL ELECTRICAL EQUIPMENT & GAS METER - PAINT #9

Seal

PROFESSIONAL SEAL REQUIRED FOR PERMITTING AND BIDDING

ChipmanDesign
ARCHITECTURE & INTERIOR DESIGN
1100 W. BROADWAY, SUITE 100
MADISON, WI 53703
TEL: 608.261.1111
WWW.CHIPMANDSIGN.COM

ISSUE FOR BID DATE 3.24.2014

STORE #3352
West Towne Mall
FSU S08
432 S. Gammon Rd
Madison, WI 53703

SHEET TITLE
EXTERIOR
ELEVATIONS

VERSION: V8.6
ISSUE DATE: 3-2014

Job No. : 13-5018
Store : 3352
Date : 04.24.14
Drawn By : MJS
Checked By: MJS

Sheet
A-2.2