

CITY OF MADISON - PARKS DIVISION
CHEROKEE MARSH

CITY OF MADISON - PARKS DIVISION
CHEROKEE MARSH

CITY OF MADISON - PARKS DIVISION
CHEROKEE MARSH

WHEELER ROAD

WHEELER ROAD

SCHOOL ROAD

CITY OF MADISON - PARKS DIVISION
NORTHLAND MANOR PARK



**CITY OF MADISON - PARKS DIVISION
CHEROKEE MARSH**

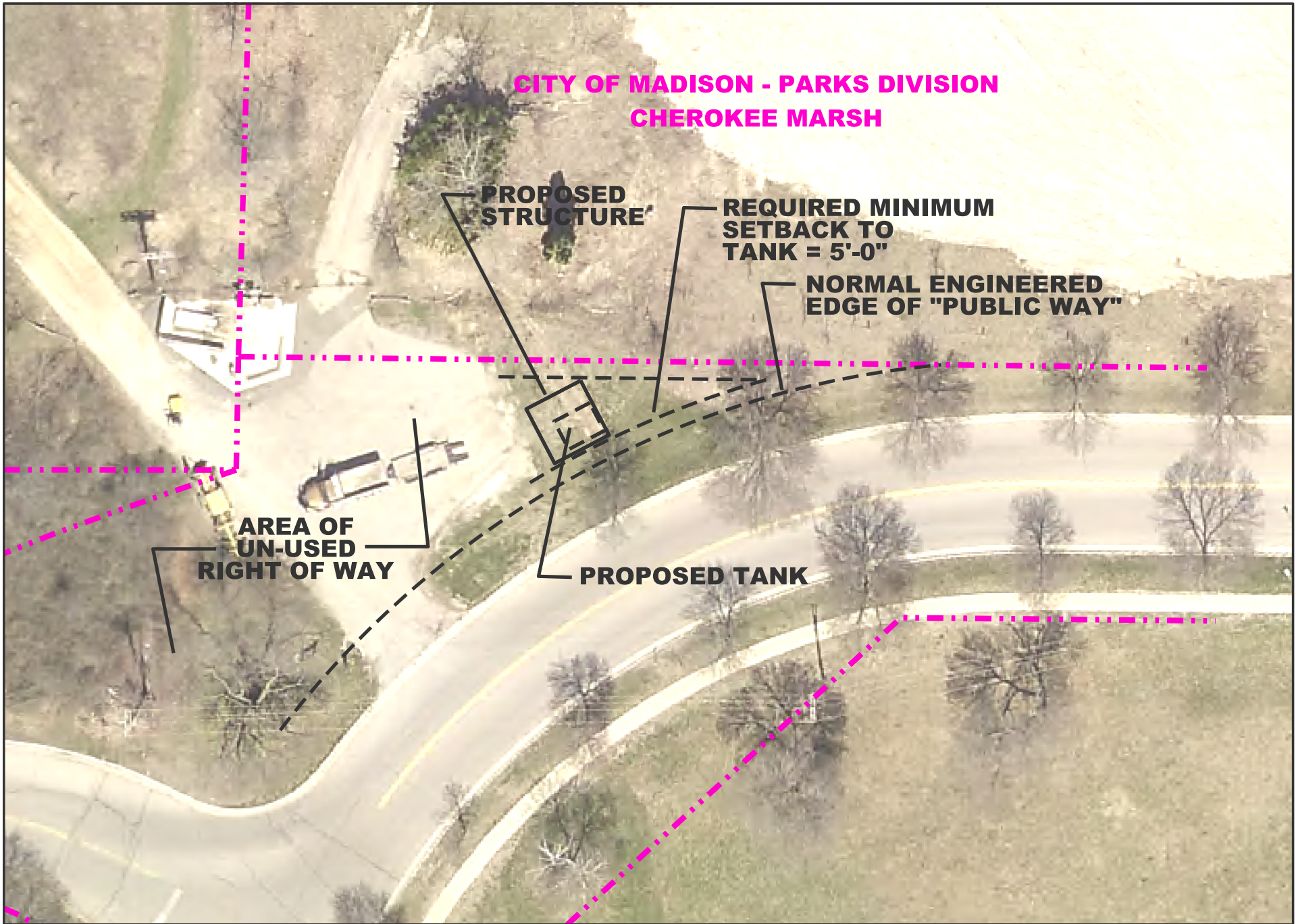
**PROPOSED
STRUCTURE**

**REQUIRED MINIMUM
SETBACK TO
TANK = 5'-0"**

**NORMAL ENGINEERED
EDGE OF "PUBLIC WAY"**

**AREA OF
UN-USED
RIGHT OF WAY**

PROPOSED TANK





**REQUIRED MINIMUM
SETBACK TO
TANK = 5'-0"**

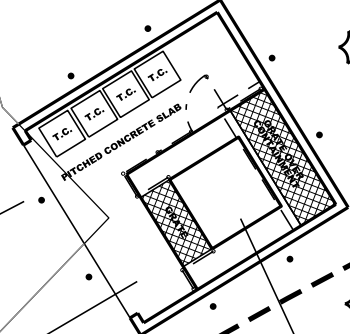
PROPERTY LINE

ASPHALT

MIN. REQ'D SETBACK

MIN. REQ'D SETBACK

**SAFETY BOLLARDS
REQUIRED BY CODE**



**EXISTING STREET
TREE, TYPICAL**

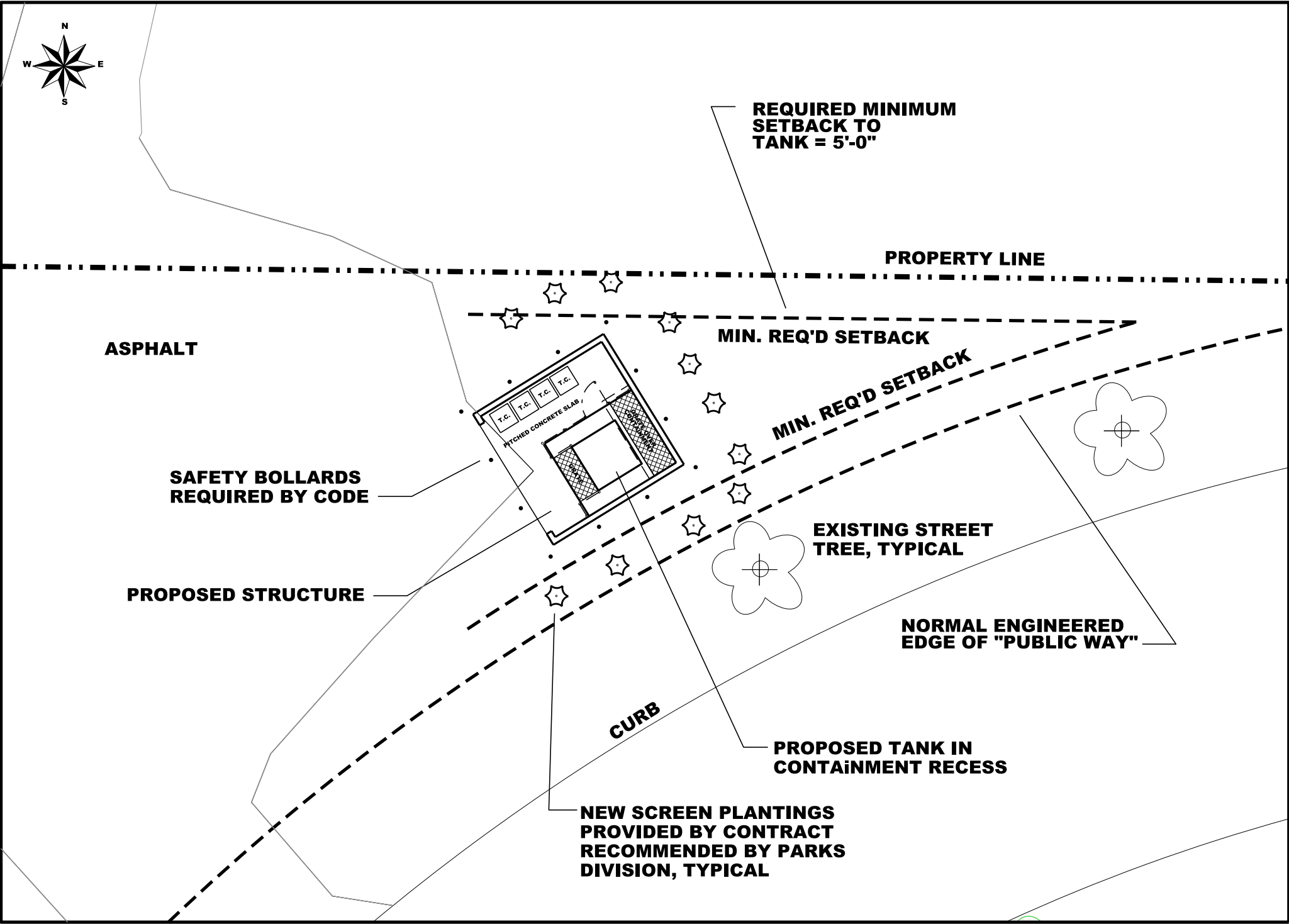
PROPOSED STRUCTURE

**NORMAL ENGINEERED
EDGE OF "PUBLIC WAY"**

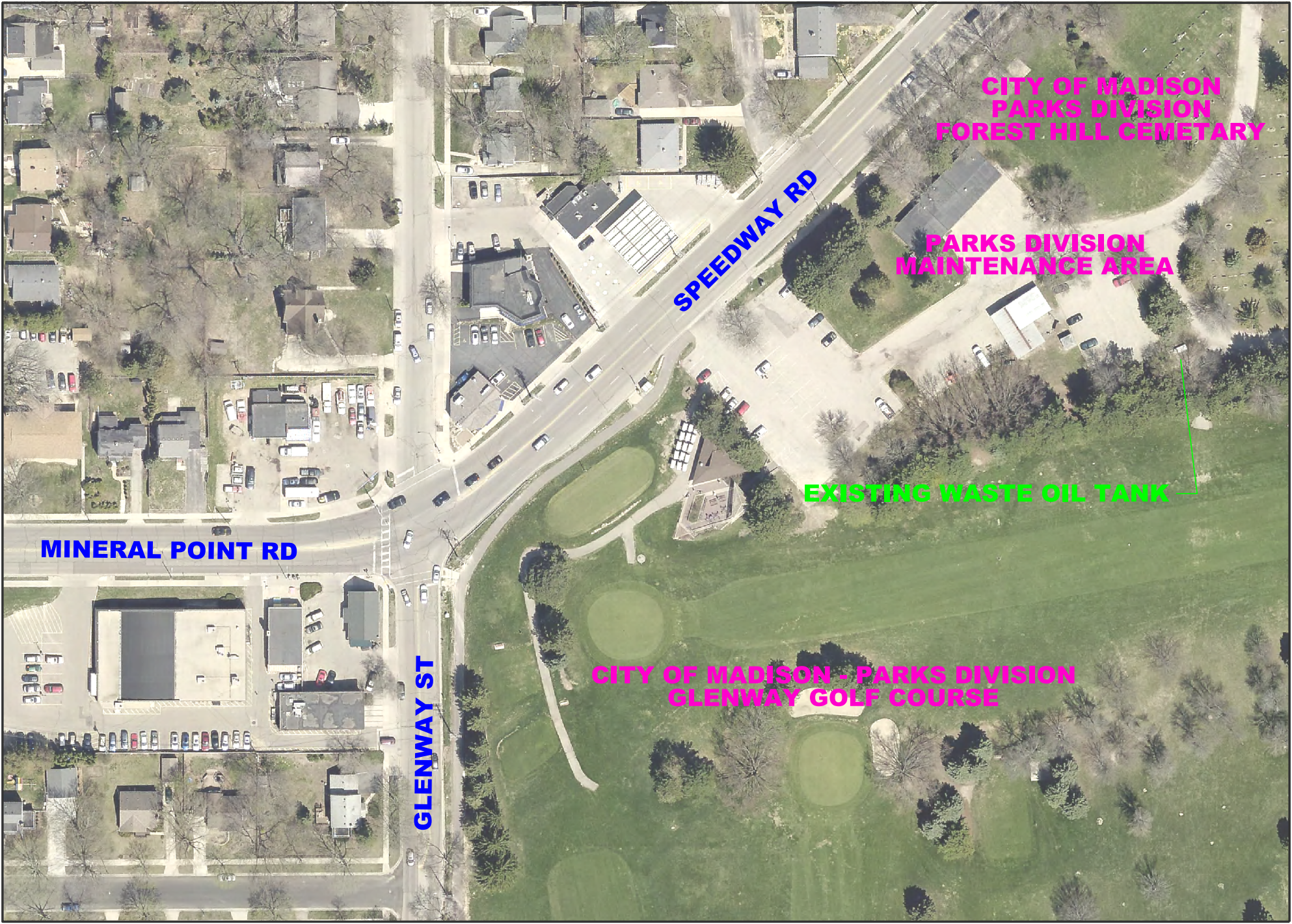
CURB

**PROPOSED TANK IN
CONTAINMENT RECESS**

**NEW SCREEN PLANTINGS
PROVIDED BY CONTRACT
RECOMMENDED BY PARKS
DIVISION, TYPICAL**







**CITY OF MADISON
PARKS DIVISION
FOREST HILL CEMETARY**

**PARKS DIVISION
MAINTENANCE AREA**

EXISTING WASTE OIL TANK

SPEEDWAY RD

MINERAL POINT RD

GLENWAY ST

**CITY OF MADISON - PARKS DIVISION
GLENWAY GOLF COURSE**



CEMETARY

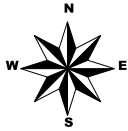
**PARKS
MAINTENANCE
BUILDINGS**

**STAFF AND
OVERFLOW
PARKING**

GOLF COURSE PARKING

**EXISTING
TANK**





REMOVE EXISTING STUMP BY CONTRACT DURING EXCAVATION

NEW SCREEN PLANTINGS PROVIDED BY CONTRACT RECOMMENDED BY PARKS DIVISION, TYPICAL

TYPICAL PARKING STALL

PROPOSED STRUCTURE

PROPOSED TANK IN CONTAINMENT RECESS

REMOVE EXISTING BUSHES BY CONTRACT DURING EXCAVATION

SAFETY BOLLARDS REQUIRED BY CODE

REMOVE ALL OF THE FOLLOWING UNDER CONTRACT: EXIST TANK, STEP AND SUMP; EXIST CONCRETE PAD; EXIST ASPHALT AND CONCRETE CURBS; EXCAVATION AS NEEDED

TRIM LOWER BRANCHES OF MAPLE TREES BY PARKS DIVISION BEFORE CONTRACT

