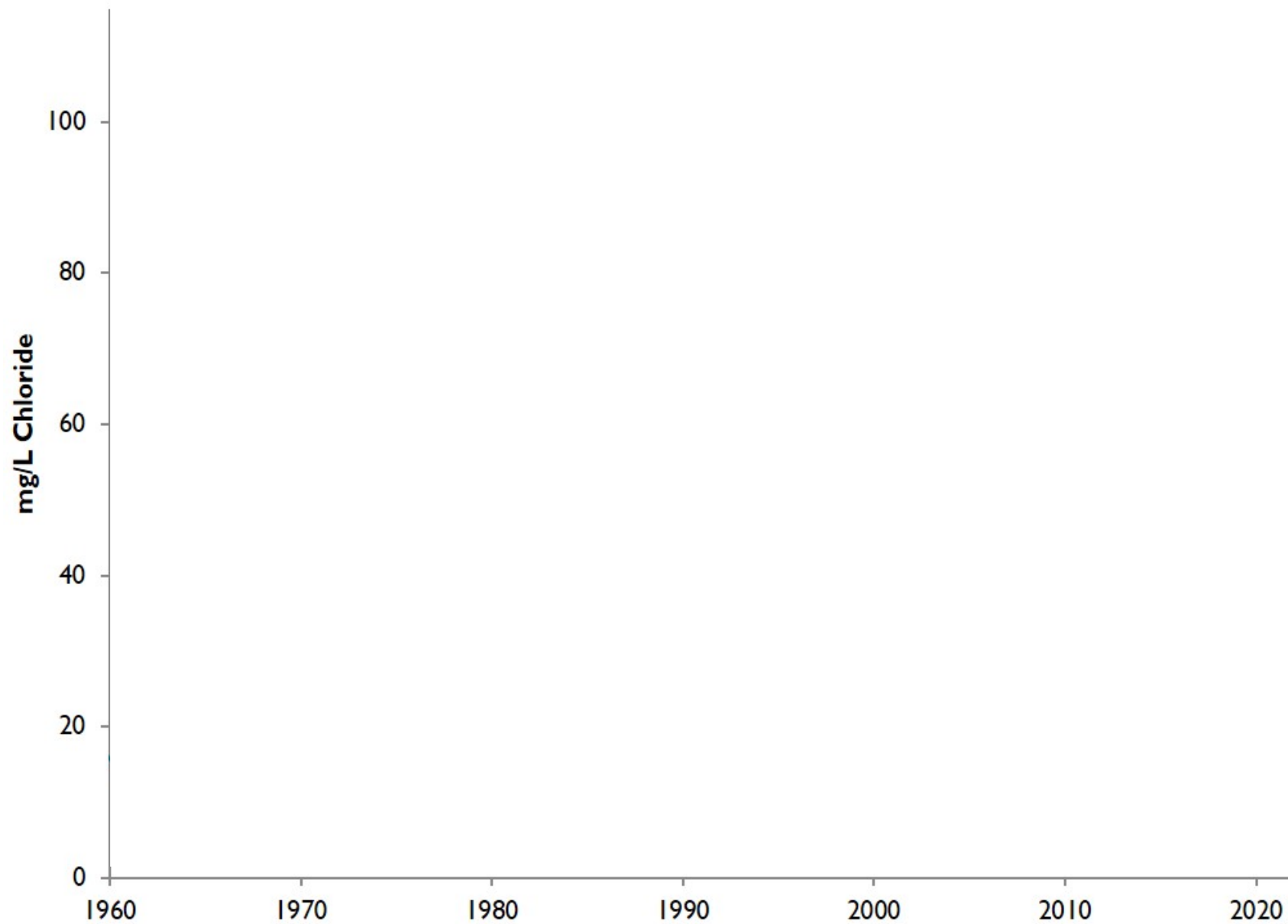
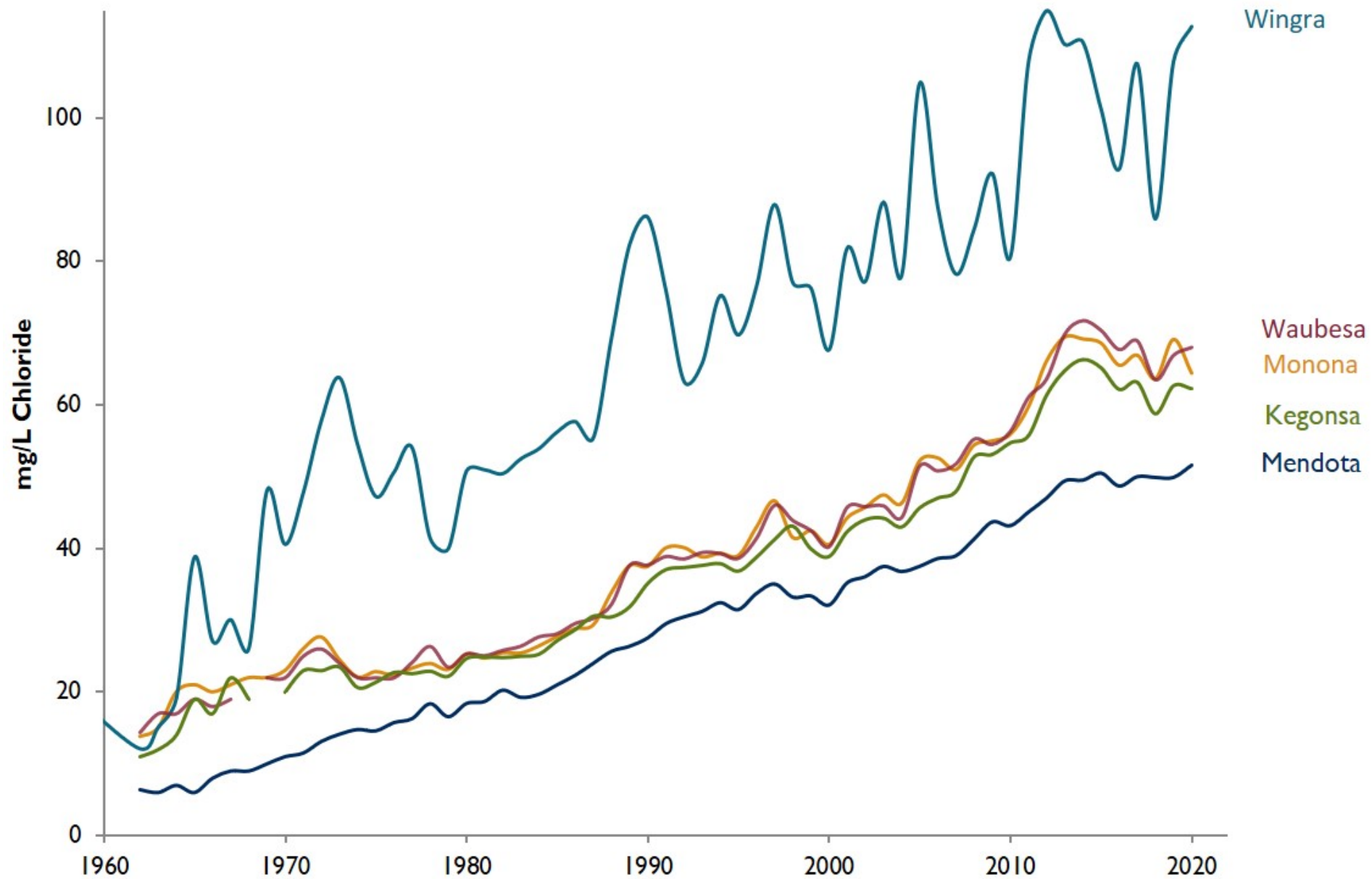


# Yahara Lakes Annual Chloride Levels



# Yahara Lakes Annual Chloride Levels



# Draft Text: Salt Doesn't Go Away

Our local lakes, waterways, groundwater and soil have been absorbing all the salt spread in the city for more than six decades. Concerted efforts by Dane County and municipal governments over the past five years have helped to slow these trends, but more work is needed to protect and restore our freshwater resources.

**Q: What is the connection between water softeners and fresh water?**

**A: Every bag of salt you put in your water softener ends up in freshwater streams.**

***Increasing the efficiency of your water softener can reduce salt use by 25-50% and protect the aquatic plants and animals that make our waters special.***



# ALL WATER IS ONE WATER

