

Time: 5/9/2018 11:19:44 AM

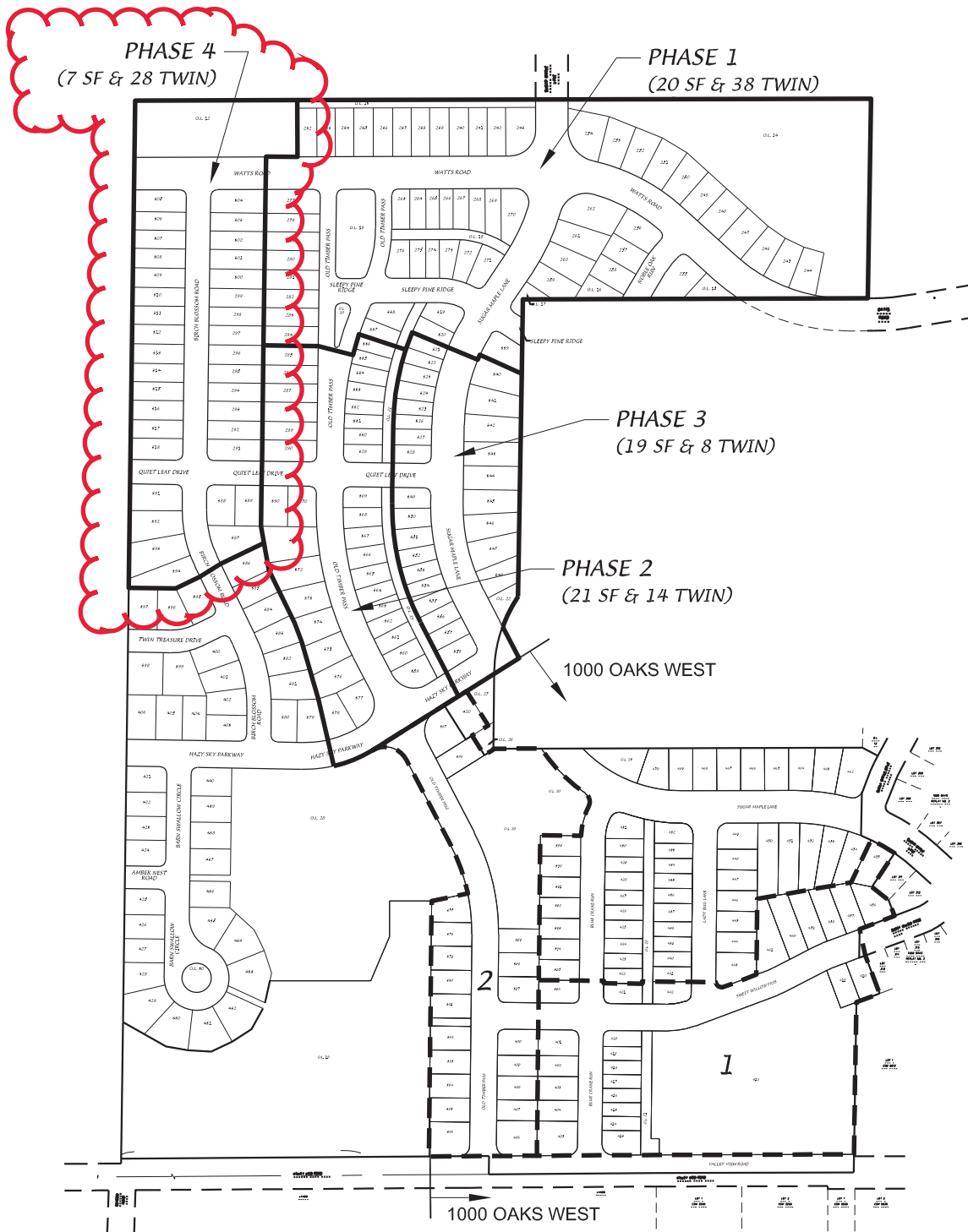
Session: C:\GTViewer_Sessions\Deming & Fourier SW.gts

City of Madison, WI - GIS/Mapping data

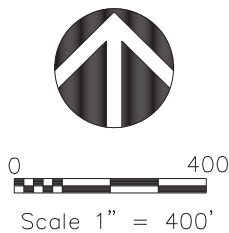
Printed By: entnt

Disclaimer: The City makes no representation about the accuracy of these records and shall not be liable for any damages

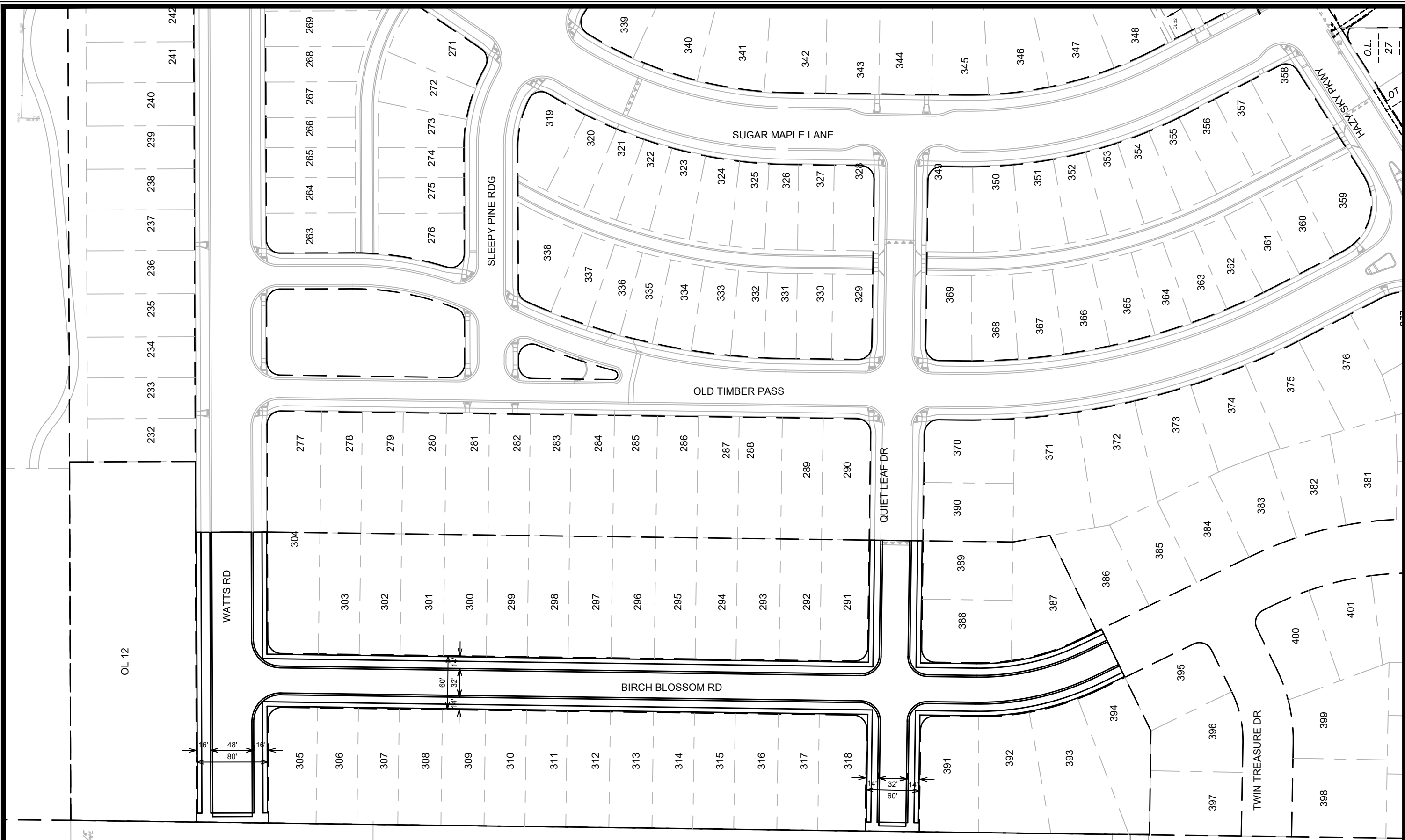
Birchwood Point South - Phase Map



D'ONOFRIO KOTTKE AND ASSOCIATES, INC.
 7530 Westward Way, Madison, WI 53717
 Phone: 608.833.7530 • Fax: 608.833.1089
 YOUR NATURAL RESOURCE FOR LAND DEVELOPMENT

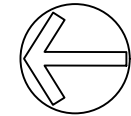


DATE: 08-31-20
 REV.:
 F.N.: 19-05-132
 DRAWN BY: JMS



1-1/4"
IRON PIPE

LANDS



SCALE 1"=100'

BIRCHWOOD POINT SOUTH:
PHASE 4

MARK	REVISION	DATE	BY
1	REVISION 1	4-2-19	LMJ
Designed By: LMJ		Date: 12/18/2020 4:42 PM	Scale: #####
12345			

12345

987654

CONTRACT NO:
987654

BIRCHWOOD POINT SOUTH: PHASE 4
TEST PROJECT
M:\DESIGN\Projects\13295\CAD\Streets\13295EN-Street\Network.dwg



13295