

- NOTES:**
- RESTORE DISTURBED TERRACE AREA WITH 6 INCHES OF TOPSOIL, SEED, AND EROSION MAT.
 - FINAL ASPHALT PATCHING LIMITS TO BE DETERMINED IN THE FIELD BY CONSTRUCTION ENGINEER.

MARK	REVISION	DATE	BY
###	###	###	###
###	###	###	###
###	###	###	###
###	###	###	###

Designed By: JAN Date: 1/29/2024 2:32 PM Scale: 1:16

#####

#####

#####

#####

FISHER ST AND CENTER ST - BUMP OUT

SSM 2024

M:\DESIGN\Projects\14199\CAD\Traffic\SSM 2024 - JAN\Safe Streets Madison 2024-14199 JAN.dwg

CONTRACT NO:

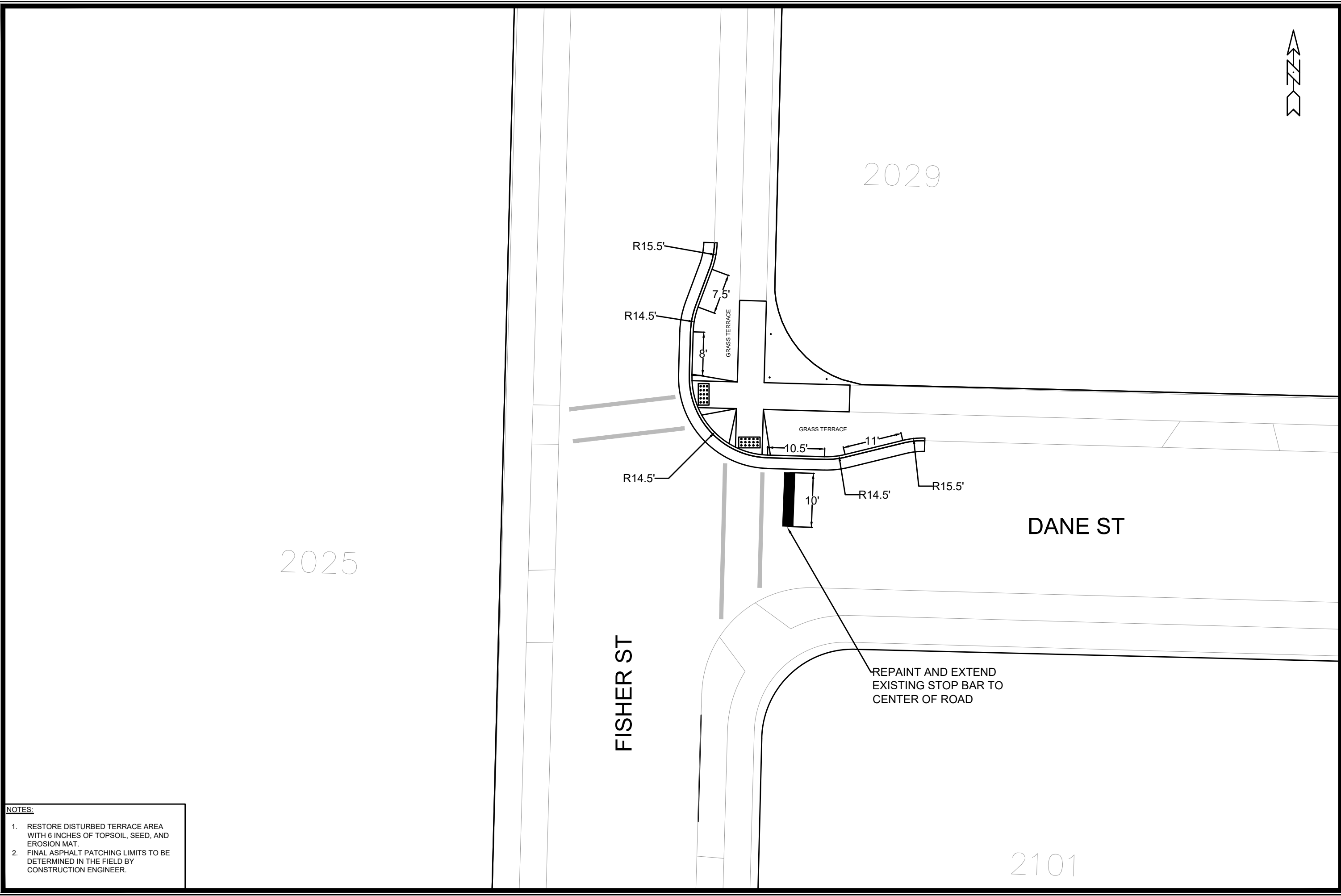


####

####

NOTES:

1. RESTORE DISTURBED TERRACE AREA WITH 6 INCHES OF TOPSOIL, SEED, AND EROSION MAT.
2. FINAL ASPHALT PATCHING LIMITS TO BE DETERMINED IN THE FIELD BY CONSTRUCTION ENGINEER.



#####	#####	#####	#####	#####	#####
####	####	####	####	####	####
####	####	####	####	####	####
####	####	####	####	####	####
####	####	####	####	####	####
####	####	####	####	####	####
####	####	####	####	####	####
####	####	####	####	####	####
####	####	####	####	####	####
####	####	####	####	####	####

FISHER ST AND DANE ST - BUMPOUT
SSM 2024
M:\DESIGN\Projects\14199\CAD\Traffic\SSM 2024 - JAN\Safe Streets Madison 2024 - 14199 JAN.dwg CONTRACT NO: #####

City of Madison Wisconsin



TAFT ST

FISHER ST

BUICK ST

8" WHITE
PAVEMENT MARKING

30.5'

18'

12'

4" DOUBLE YELLOW
PAVEMENT MARKING

GRASS TERRACE
SIDEWALK

GRASS TERRACE
SIDEWALK

EXTEND CONC.
DRIVE APRON

EXTEND CONC.
DRIVE APRON

PLOT SCALE:

PLOT NAME:

REV. DATE:

ORIGINATOR: CITY OF MADISON, TRAFFIC ENG. DIV.



GAMMON RD

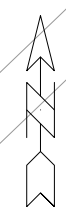
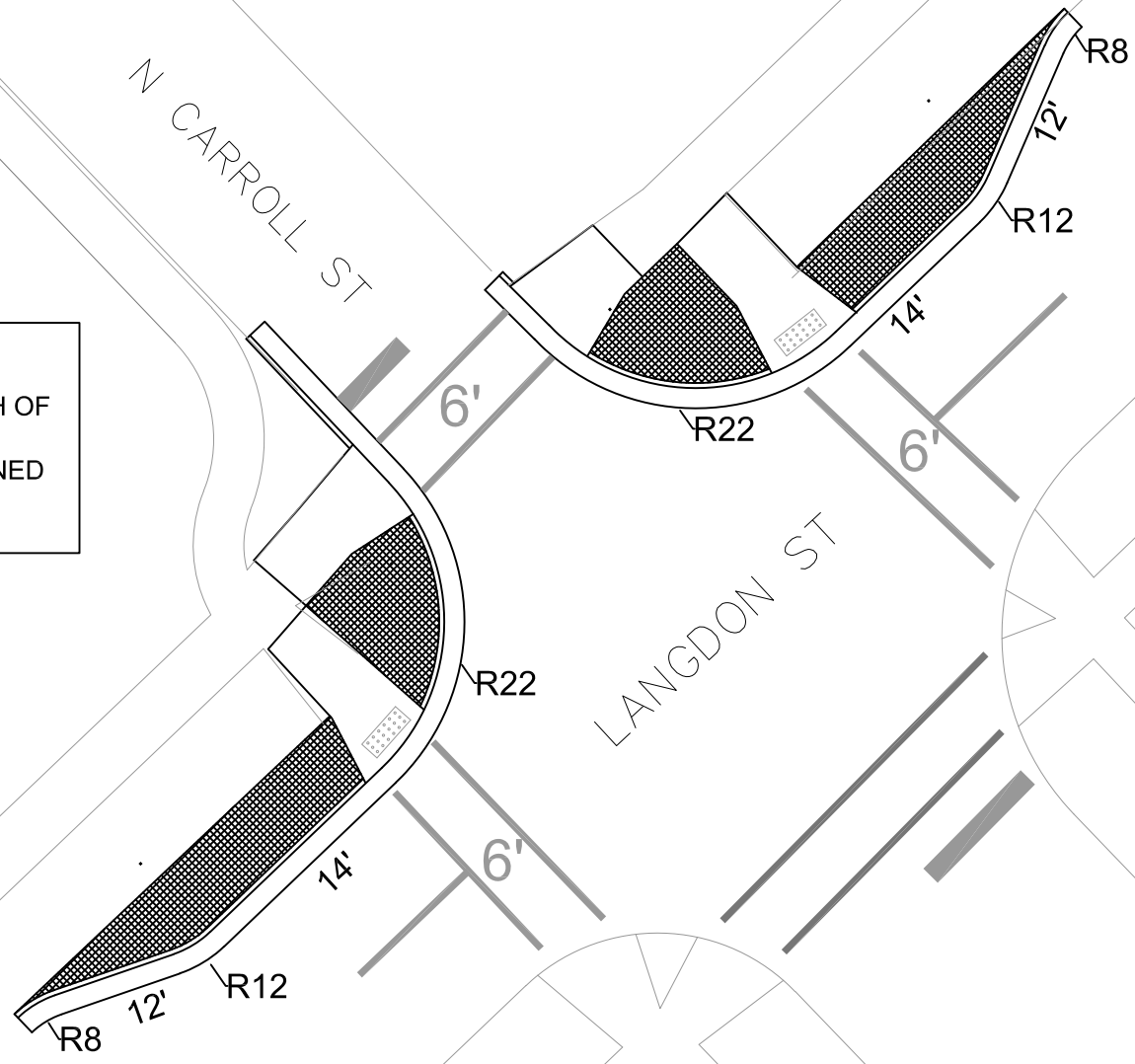
MINERAL POINT RD

ADD ISLAND NOSE, WIDEN PED REFUGE,
CONVERT CROSSWALKS TO CONTINENTAL-STYLE



NOTES:

- RESTORE DISTURBED TERRACE AREA WITH 6 INCH OF TOPSOIL, SEED, AND EROSION MAT.
- FINAL ASPHALT PATCHING LIMITS TO BE DETERMINED IN FIELD BY CONSTRUCTION ENGINEER.
- RADII DIMENSIONED TO FACE OF CURB.



MARK	REVISION	DATE	BY
###	###	###	###
###	###	###	###
###	###	###	###
###	###	###	###

LANGDON ST AND N CARROLL ST
 PROJECT 14199
 C:\Users\lrah\OneDrive - cityofmadison\Documents\Safe Streets Madison 2024-14199 - AH autocad.dwg CONTRACT NO:



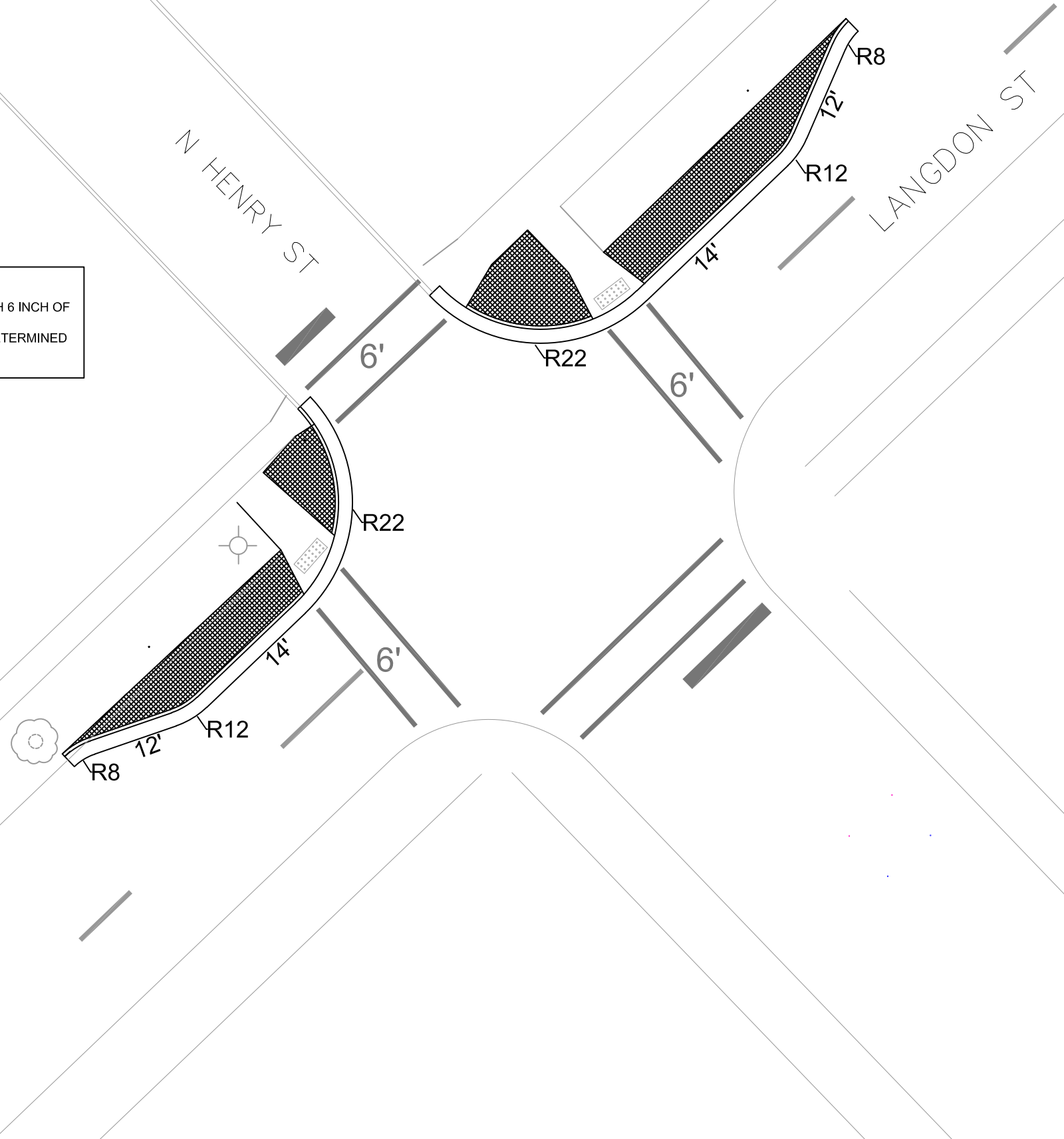
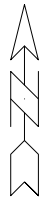
14199
S4

NOTES:

- RESTORE DISTURBED TERRACE AREA WITH 6 INCH OF TOPSOIL, SEED, AND EROSION MAT.
- FINAL ASPHALT PATCHING LIMITS TO BE DETERMINED IN FIELD BY CONSTRUCTION ENGINEER.
- RADII DIMENSIONED TO FACE OF CURB.

N HENRY ST

LANGDON ST



###	###	###	###	###	###
###	###	###	###	###	###
###	###	###	###	###	###
###	###	###	###	###	###
###	###	###	###	###	###
###	###	###	###	###	###
###	###	###	###	###	###
###	###	###	###	###	###
###	###	###	###	###	###
###	###	###	###	###	###
###	###	###	###	###	###
###	###	###	###	###	###
###	###	###	###	###	###
###	###	###	###	###	###
###	###	###	###	###	###
###	###	###	###	###	###
###	###	###	###	###	###
###	###	###	###	###	###
###	###	###	###	###	###

#####

CONTRACT NO:

LANGDON ST AND N HENRY ST

PROJECT 14199

C:\Users\lmah\OneDrive - cityofmadison\Documents\Safe Streets Madison 2024-14199 - AH autocad.dwg

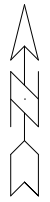
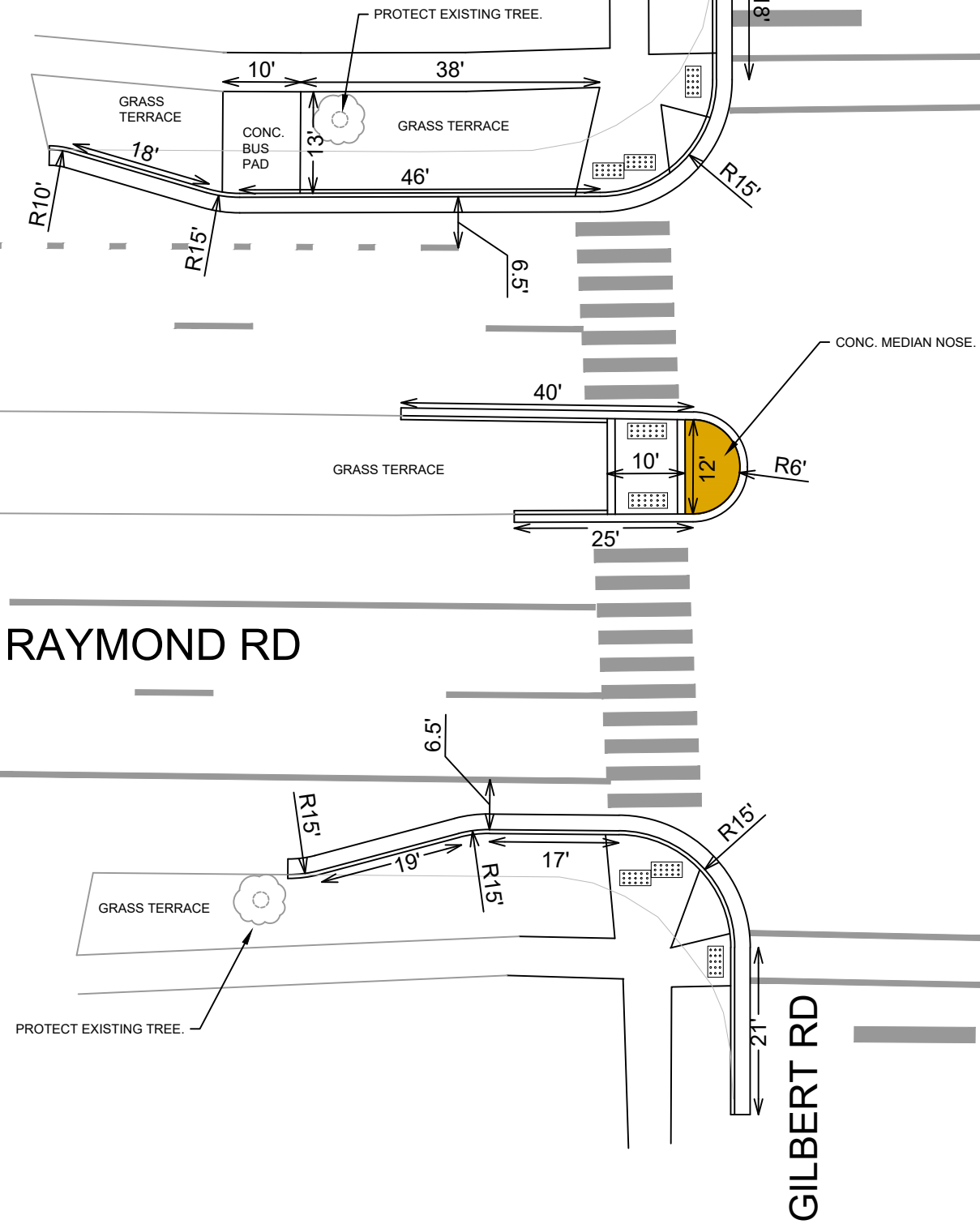


14199

S3

NOTES:

- RECONSTRUCT CENTER ISLAND NOSE FOR WALKTHROUGH CROSSWALK PER MADISON S.D.D. 3.13.
- YELLOW EPOXY CENTER MEDIAN NOSE.
- RESTORE DISTURBED TERRACE AREA WITH 6 INCH OF TOPSOIL, SEED, AND EROSION MAT.
- FINAL ASPHALT PATCHING LIMITS TO BE DETERMINED IN FIELD BY CONSTRUCTION ENGINEER.
- RADII DIMENSIONED TO FACE OF CURB.
- CONSTRUCTION TO TAKE PLACE DURING SUMMER BREAK FOR MADISON SCHOOLS (MIDDLE OF JUNE TO END OF AUGUST).
- ALL OTHER PAVEMENT MARKINGS TO REMAIN AS IS.
- BUS STOP TO REMAIN OPEN AT ALL TIMES DURING CONSTRUCTION. COORDINATE WITH METRO FOR TEMPORARY BUS STOP LOCATION.

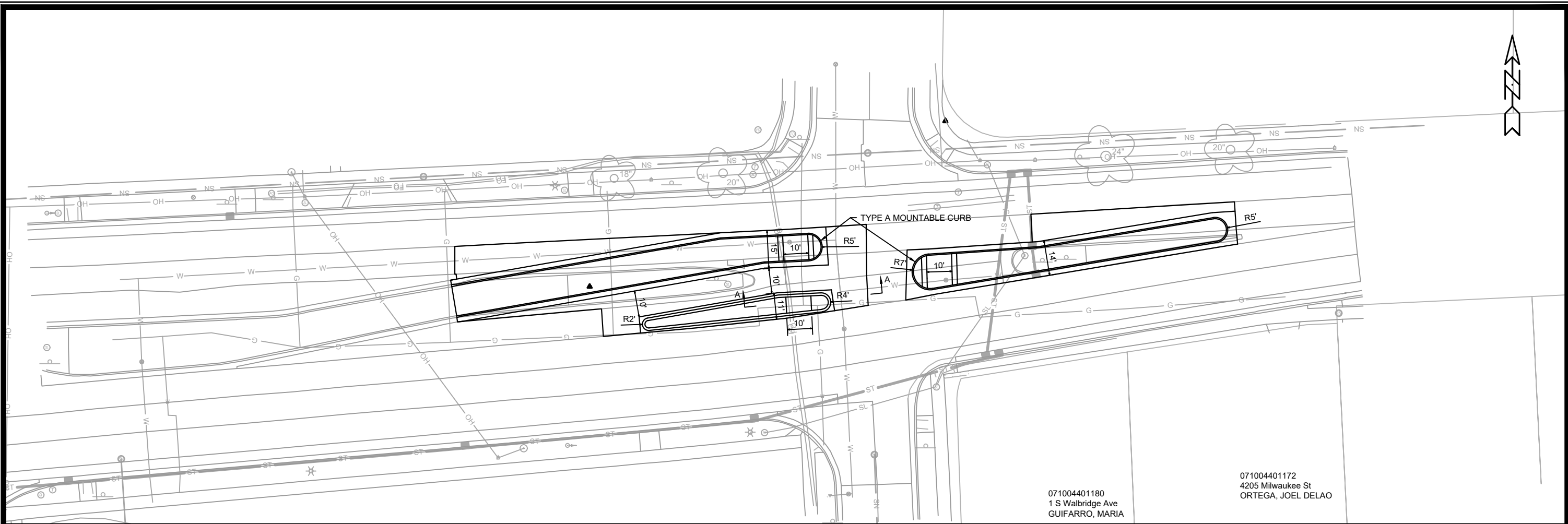


MARK	REVISION	DATE	BY

Designed By: LMC Date: 1/27/2024 11:09 AM Scale: 1/20

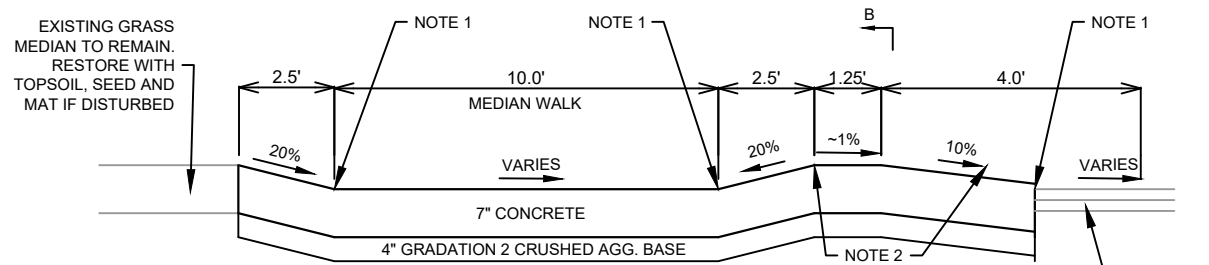
RAYMOND RD AND GILBERT RD - BUMP OUTS AND REFUGE ISLAND
SSM 2024
 M:\DESIGN\Projects\14199\CAD\Traffic\SSM 2024 - LMC\Raymond Rd near Gilbert & Tavhee - SSM 2024 - LMC\CONTRACT NO:



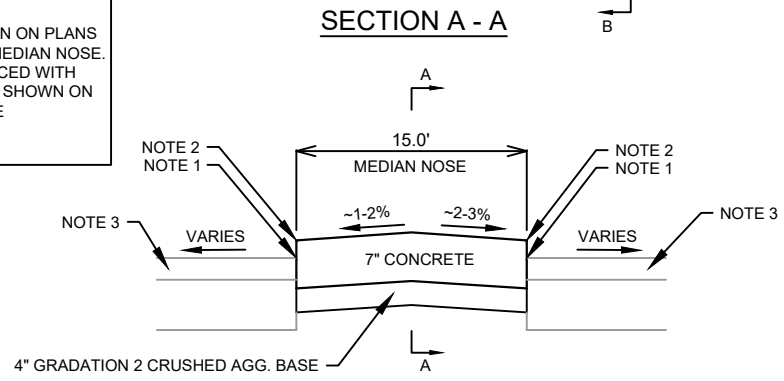


071004401180
1 S Walbridge Ave
GUIFARRO, MARIA

071004401172
4205 Milwaukee St
ORTEGA, JOEL DELAO



- NOTES:
1. STATION OFFSET ELEVATION SHOWN ON PLANS
 2. 6" RISE TYPICAL FOR MOUNTABLE MEDIAN NOSE.
 3. PAVEMENT AND BASE TO BE REPLACED WITH 9" CONCRETE PAVEMENT TO LIMITS SHOWN ON PLAN VIEW OR AS DIRECTED BY THE CONSTRUCTION ENGINEER



**MODIFIED CONCRETE MOUNTABLE MEDIAN
ISLAND NOSE**

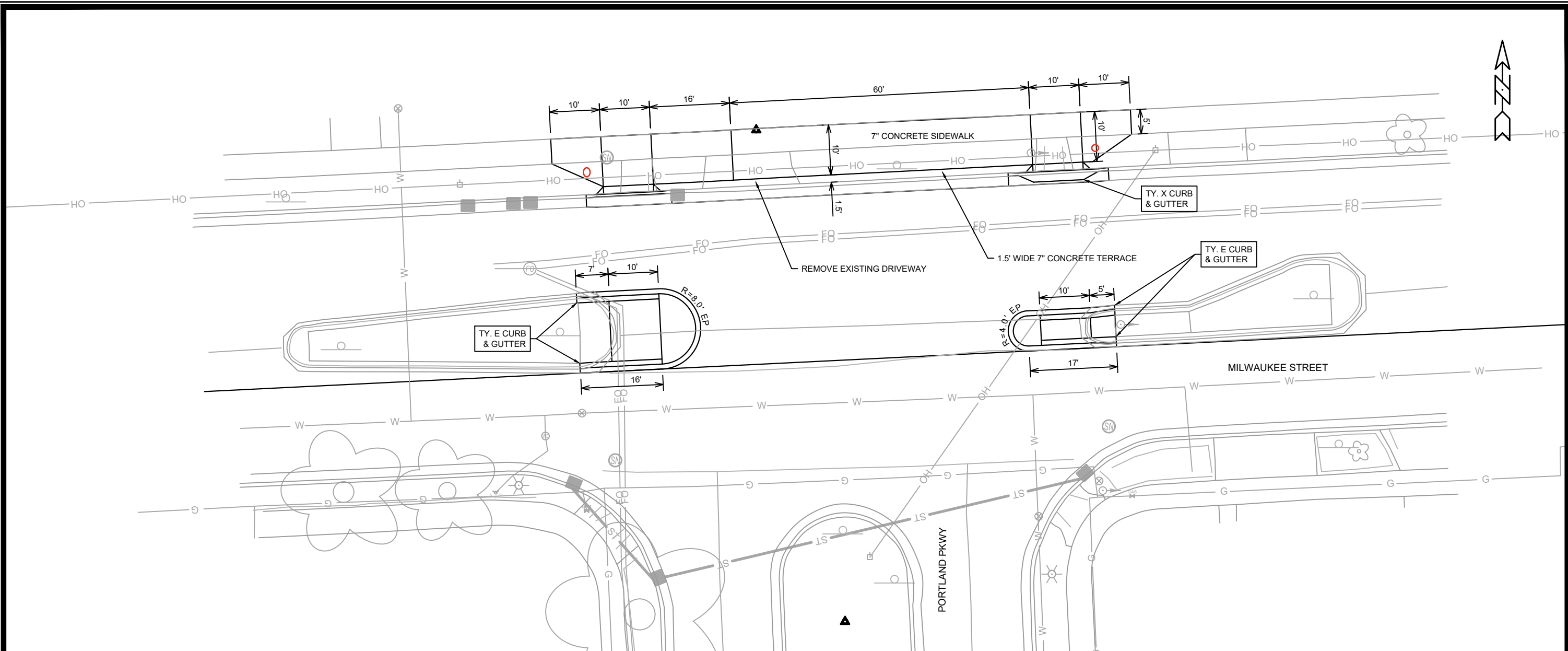
DATE	BY
REVISION	
Designed By: MFG	Date: 10/11/2024 3:29 PM
Scale: 1" = 40'	
MARK	14658

14658
MILWAUKEE AT WALBRIDGE
MADISON, WI
CONTRACT NO: #####

MILWAUKEE AT WALBRIDGE
SAFE STREETS 2025
M:\DESIGN\Projects\14658\CAD\Streets\14658EN-PnP_Milwaukee_Walbridge.dwg



14658
M



MARK	REVISION	DATE	BY
Designed By: MFG	Date: 11/26/2024 3:28 PM	Scale: 1" = 20' XRE	MP

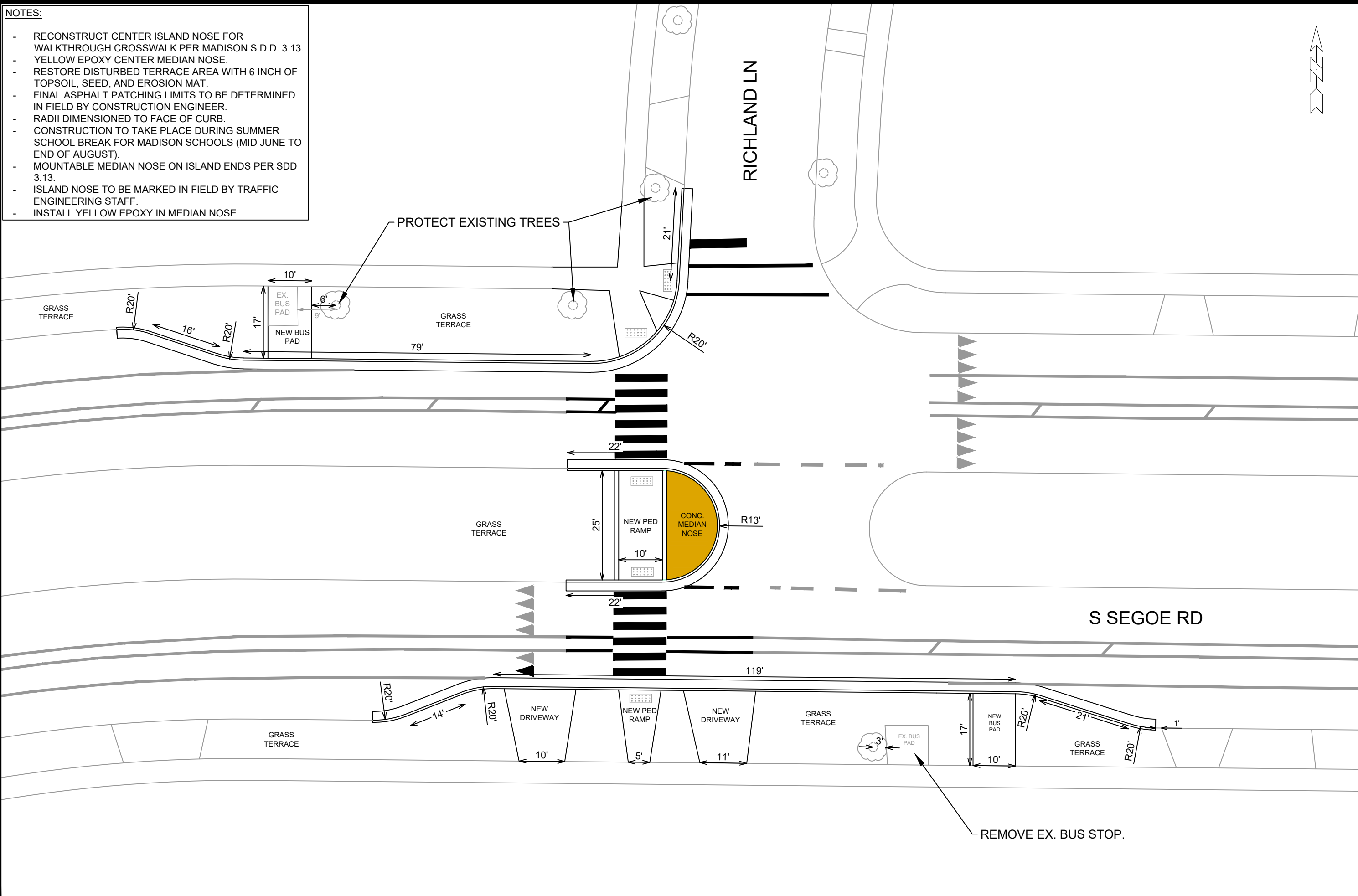
14658
 MADISON, WI
 #####
 CONTRACT NO:

MILWAUKEE AT PORTLAND
 SAFE STREETS 2025
 \\gisserv\data\DESIGN\Projects\14658\CAD\Streets\14658EN-PIP_Milwaukee_Portland.dwg



14658
 MP

- NOTES:**
- RECONSTRUCT CENTER ISLAND NOSE FOR WALKTHROUGH CROSSWALK PER MADISON S.D.D. 3.13.
 - YELLOW EPOXY CENTER MEDIAN NOSE.
 - RESTORE DISTURBED TERRACE AREA WITH 6 INCH OF TOPSOIL, SEED, AND EROSION MAT.
 - FINAL ASPHALT PATCHING LIMITS TO BE DETERMINED IN FIELD BY CONSTRUCTION ENGINEER.
 - RADII DIMENSIONED TO FACE OF CURB.
 - CONSTRUCTION TO TAKE PLACE DURING SUMMER SCHOOL BREAK FOR MADISON SCHOOLS (MID JUNE TO END OF AUGUST).
 - MOUNTABLE MEDIAN NOSE ON ISLAND ENDS PER SDD 3.13.
 - ISLAND NOSE TO BE MARKED IN FIELD BY TRAFFIC ENGINEERING STAFF.
 - INSTALL YELLOW EPOXY IN MEDIAN NOSE.




MARK	REVISION	DATE	BY

MADISON, WI

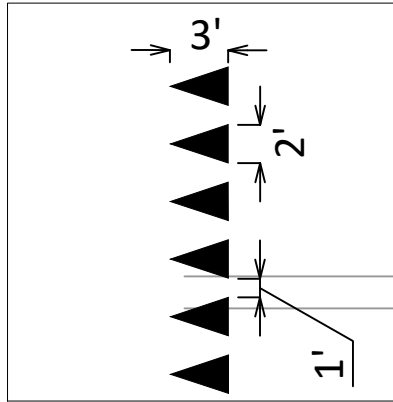
SEGOE RD AND RICHLAND LN - BUMPOUTS AND REFUGE ISLAND

SSM 2024

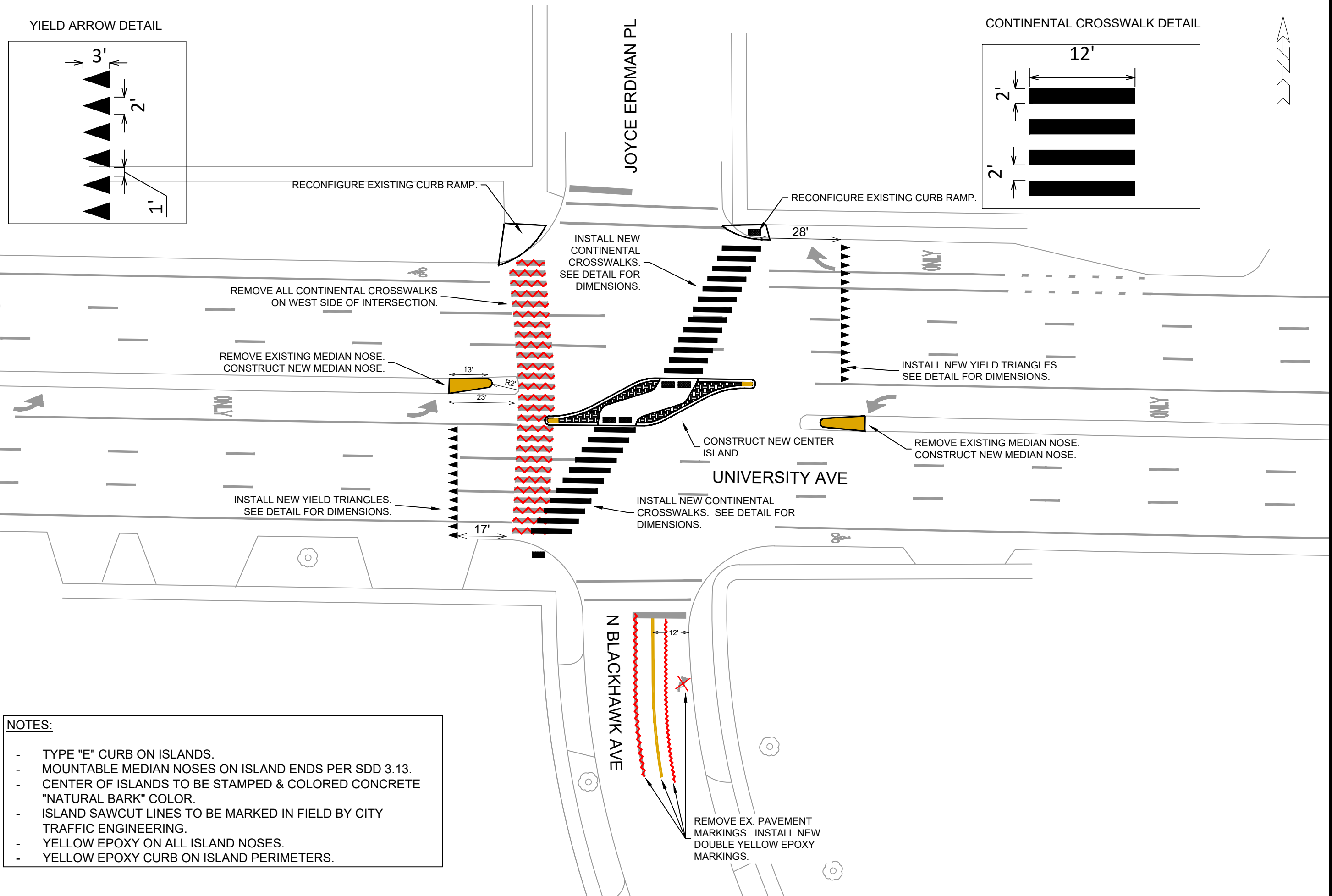
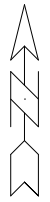
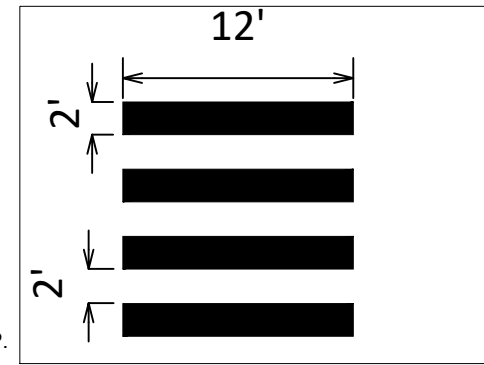
M:\DESIGN\Projects\14199\CAD\Traffic\SSM 2024 - LMC\Segoe Rd at Richland Ln - SSM 2024 - LMC.dwg LMC.dwg CONTRACT NO.:



YIELD ARROW DETAIL



CONTINENTAL CROSSWALK DETAIL



- NOTES:**
- TYPE "E" CURB ON ISLANDS.
 - MOUNTABLE MEDIAN NOSES ON ISLAND ENDS PER SDD 3.13.
 - CENTER OF ISLANDS TO BE STAMPED & COLORED CONCRETE "NATURAL BARK" COLOR.
 - ISLAND SAWCUT LINES TO BE MARKED IN FIELD BY CITY TRAFFIC ENGINEERING.
 - YELLOW EPOXY ON ALL ISLAND NOSES.
 - YELLOW EPOXY CURB ON ISLAND PERIMETERS.

MARK	REVISION	DATE	BY

UNIVERSITY AVE AND N. BLACKHAWK AVE - CENTER ISLAND

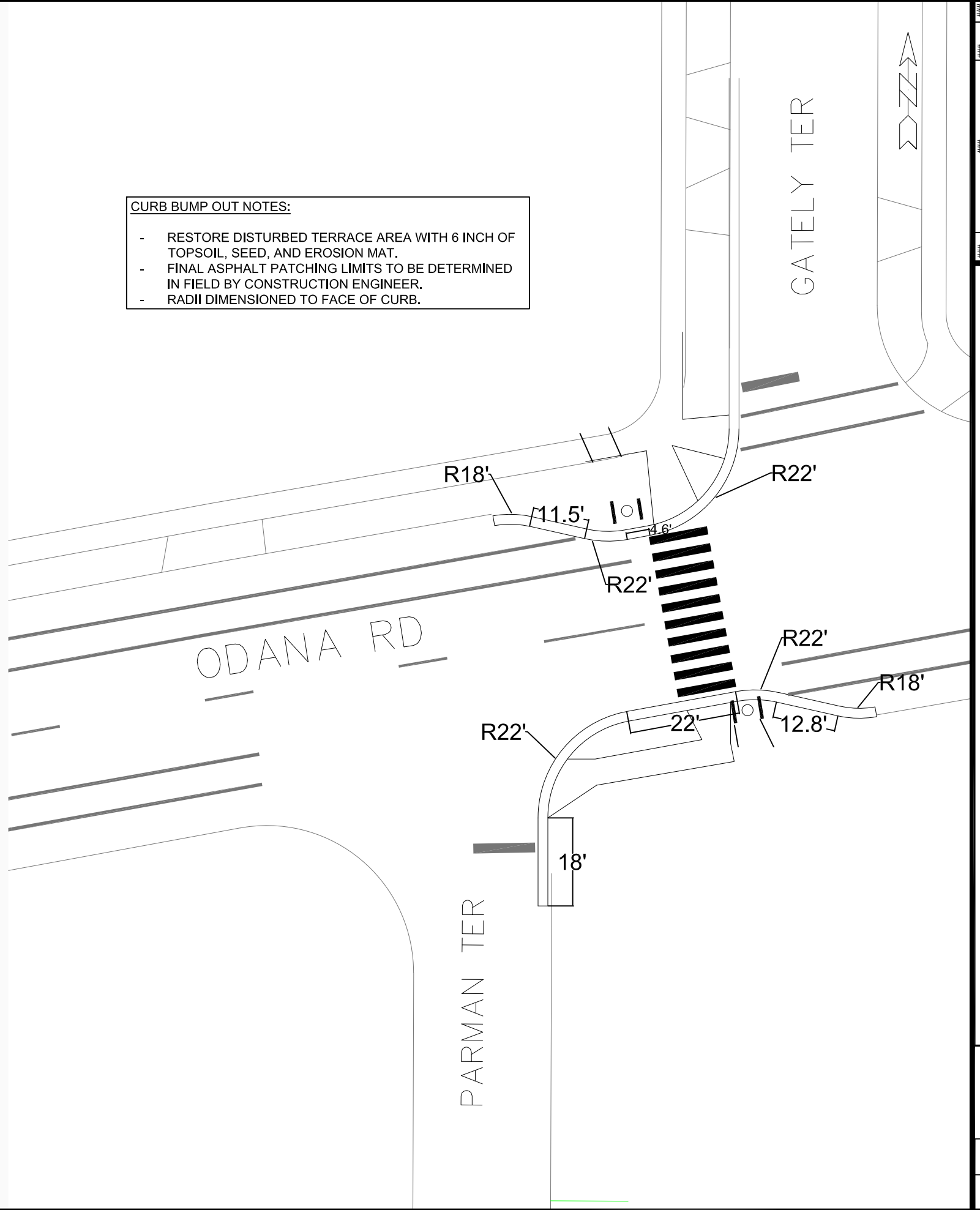
SSM 2024

M:\DESIGN\Projects\14199\CAD\Traffic\SSM 2024 - LMC\University Ave at N Blackhawk Ave - SSM 2024 - LMC\CONTRACT NO:

MADISON, WI

UNIVERSITY AVE AND N. BLACKHAWK AVE - CENTER ISLAND

- CURB BUMP OUT NOTES:**
- RESTORE DISTURBED TERRACE AREA WITH 6 INCH OF TOPSOIL, SEED, AND EROSION MAT.
 - FINAL ASPHALT PATCHING LIMITS TO BE DETERMINED IN FIELD BY CONSTRUCTION ENGINEER.
 - RADII DIMENSIONED TO FACE OF CURB.



MARK	REVISION	DATE	BY
###	###	###	###
###	###	###	###
###	###	###	###
###	###	###	###

 #####
 #####
 #####
 #####
 #####



14199
 S1

ODANA RD AT PARMAN TER/GATELY TER

PROJECT 14199

C:\Users\hnh\OneDrive - cityofmadison\Documents\Safe Streets Madison 2024-14199 - AH autocad.dwg

CONTRACT NO:

#####

#####

1/16/2024 9:47 AM

Scale: Custom

Blaine Dr

Sidewalk Gap

Legend



Vera Court Neighborhood Center

Mendota Elementary School

School Rd

Toban Dr

Nobel Ln

Petera Pl

Vera Ct

Blaine Dr

Blaine Dr

Uncle J's Custom Rods

Champion Appliance Care

Google Earth

Image Landsat / Copernicus

Troy Dr

Troy Dr

Toban Dr

500 ft



TOBAN DRIVE MATCHLINE

North ↑

TOBAN DR

BLAINE DR

SCHOOL RD

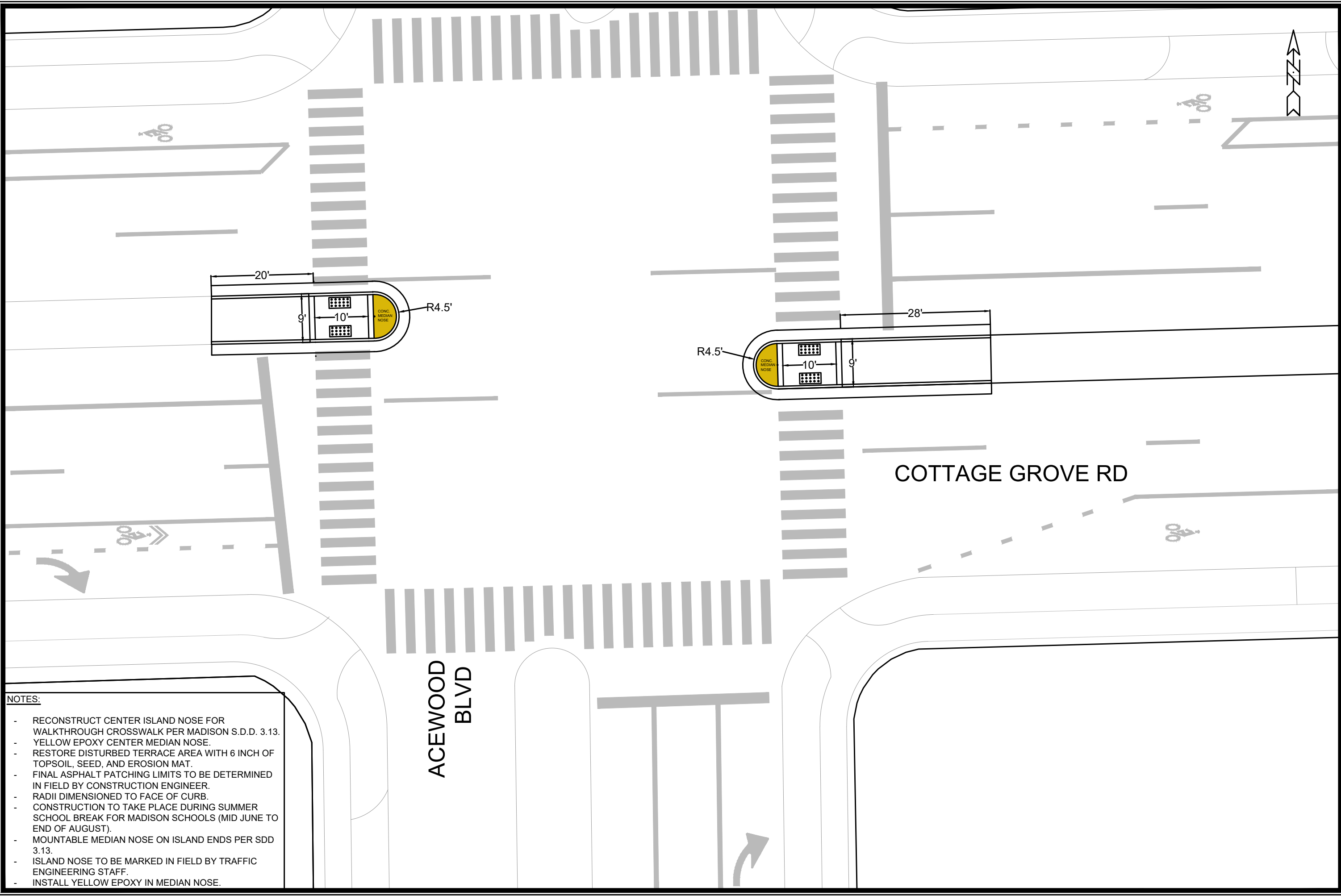
269'

8'

11'

125'





- NOTES:
- RECONSTRUCT CENTER ISLAND NOSE FOR WALKTHROUGH CROSSWALK PER MADISON S.D.D. 3.13.
 - YELLOW EPOXY CENTER MEDIAN NOSE.
 - RESTORE DISTURBED TERRACE AREA WITH 6 INCH OF TOPSOIL, SEED, AND EROSION MAT.
 - FINAL ASPHALT PATCHING LIMITS TO BE DETERMINED IN FIELD BY CONSTRUCTION ENGINEER.
 - RADII DIMENSIONED TO FACE OF CURB.
 - CONSTRUCTION TO TAKE PLACE DURING SUMMER SCHOOL BREAK FOR MADISON SCHOOLS (MID JUNE TO END OF AUGUST).
 - MOUNTABLE MEDIAN NOSE ON ISLAND ENDS PER SDD 3.13.
 - ISLAND NOSE TO BE MARKED IN FIELD BY TRAFFIC ENGINEERING STAFF.
 - INSTALL YELLOW EPOXY IN MEDIAN NOSE.

MARK	REVISION	DATE	BY
###	###	###	###
###	###	###	###
###	###	###	###

 #####
 #####

COTTAGE GROVE RD AND ACEWOOD BLVD - REFUGE ISLANDS
 SSM 2024
 M:\DESIGN\Projects\14199\CAD\Traffic\SSM 2024 - JAN\Safe Streets Madison 2024-14199 JAN.dwg CONTRACT NO: #####



 ####

S. Park Street

W. Badger Road

711

714

711

###



SIGNING AND MARKING PLAN

PROJECT NAME

MADISON, WI

M:\DESIGN\Traffic\Maps_Plans\SK-Maps\sk2024_Badger_BK_sidewalk.dwg

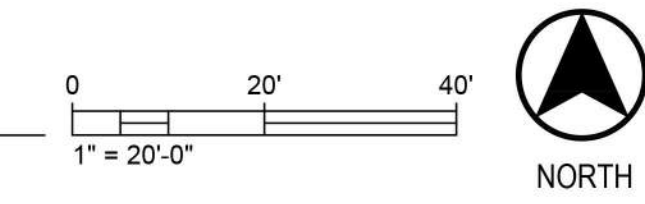
CONTRACT NO:

###	---	###	---	###	---
###	---	###	---	###	---
MARK	REVISION	DATE	BY	DATE	BY
Designed By: ---	Date: 4/17/2024 5:14 PM	Scale: ---	###	###	###

- LEGEND**
- CONCRETE BARRIERS
 - COLORED CONCRETE
 - STANDARD CONCRETE
 - ASPHALT
 - PLANTING AREA
 - NATIVE PLANTING
 - LAWN



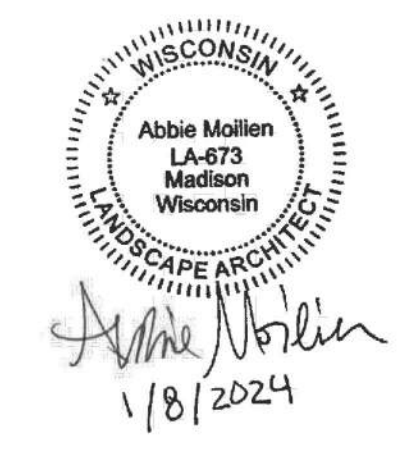
1 CONCEPTUAL SITE PLAN
SCALE: 1" = 20' - 0"



JLA PROJECT NUMBER: 21-0102



**THE CENTER FOR
BLACK EXCELLENCE
AND CULTURE**
LAND USE & DEMOLITION
PERMIT SUBMITTAL



PROGRESS DOCUMENTS
These documents reflect progress and intent and may be subject to change, including additional detail. These are not final construction documents and should not be used for final bidding or construction-related purposes.

DATE OF ISSUANCE: JANUARY 08, 2024

REVISION SCHEDULE		
Mark	Description	Date

SHEET TITLE:
**CONCEPTUAL
SITE PLAN**

SHEET NUMBER:
L001