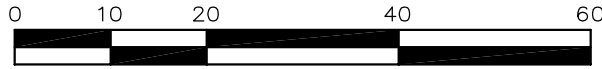


# Exhibit B

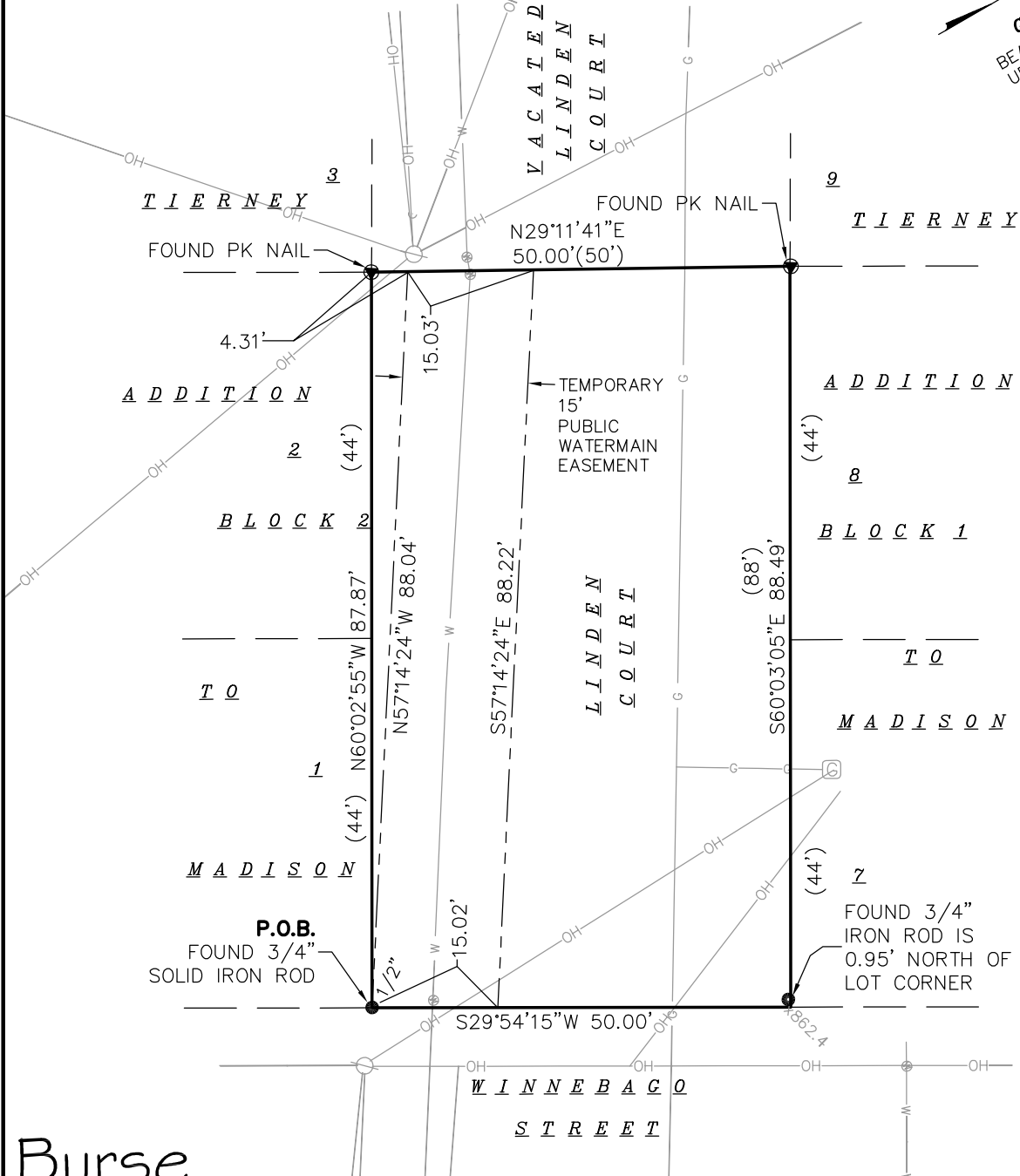
## LINDEN COURT VACATION EXHIBIT

PART OF LINDEN COURT, LOCATED IN THE SOUTHWEST AND NORTHWEST QUARTERS OF THE SOUTHEAST QUARTER OF SECTION 06, TOWNSHIP 07 NORTH, RANGE 10 EAST, CITY OF MADISON, DANE COUNTY, WISCONSIN.



SCALE : ONE INCH = TWENTY FEET

**GRID NORTH**  
BEARINGS ARE BASED UPON THE WISCONSIN COUNTY COORDINATE SYSTEM (DANE ZONE)



### Burse

surveying & engineering inc.

2801 International Lane, Suite 101  
Madison, WI 53704 608.250.9263  
Fax: 608.250.9266  
email: mburse@bse-inc.net  
www.bursesurveyengr.com

Date: 2017-08-28

Plot View: Vacation

BSE1966\dwg\BSE1966.DWG

#### LEGEND

- OH — OVERHEAD UTILITY
- G — GAS MAIN
- W — WATER MAIN