



Evergreen Ave, Ohio Ave, Sommers Ave, & Atwood Ave/Hudson Ave Intersection Construction 2025

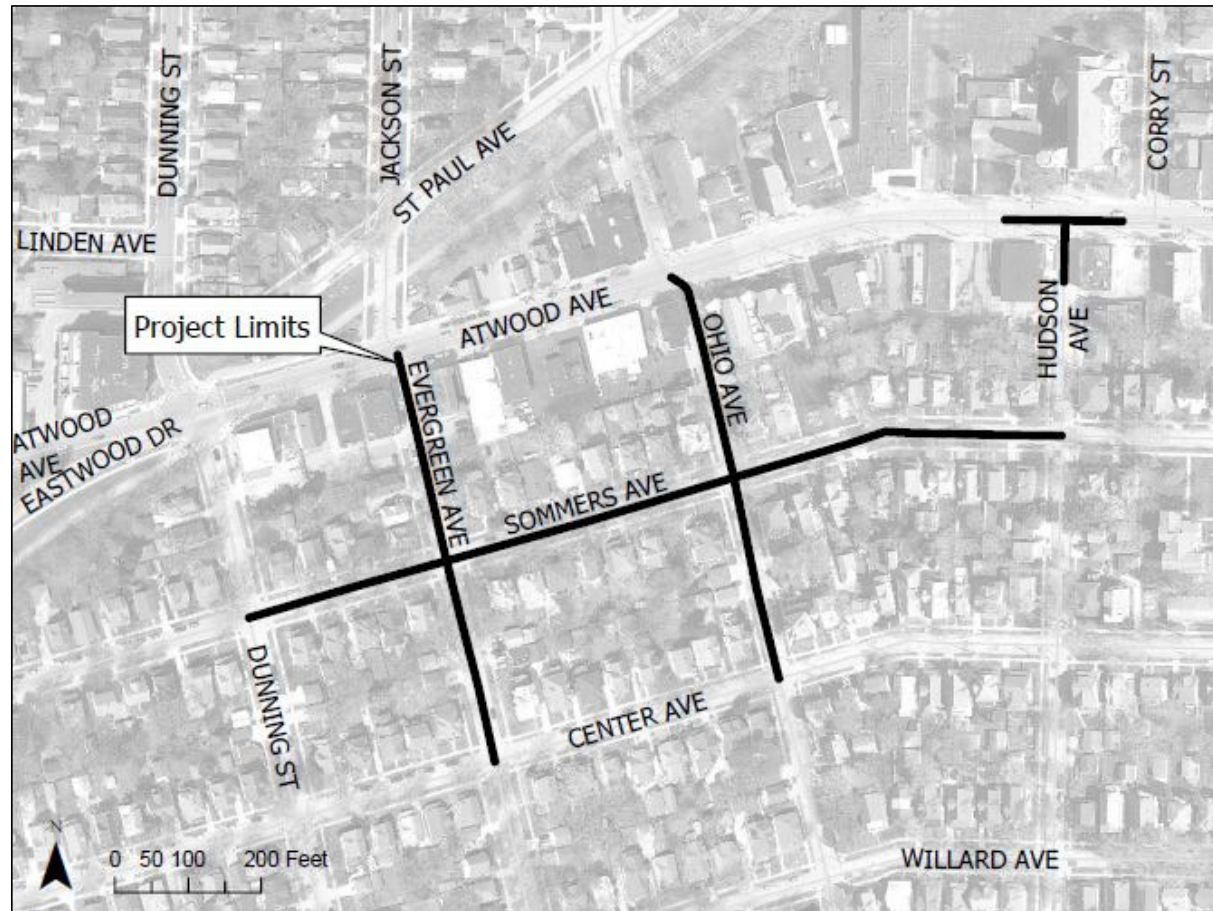
Board of Public Works
City of Madison Engineering Division
December 19, 2024

CITY OF **MADISON**



Project Location

- District 15

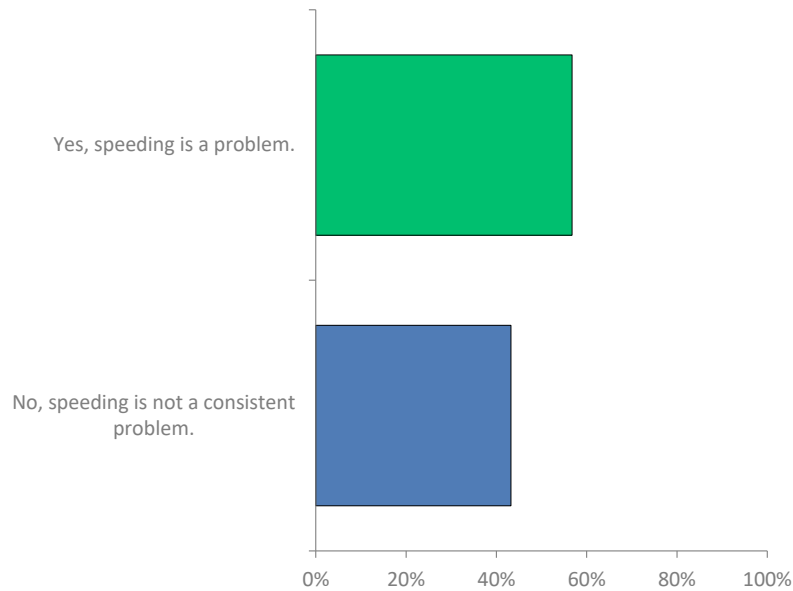


CITY OF **MADISON**

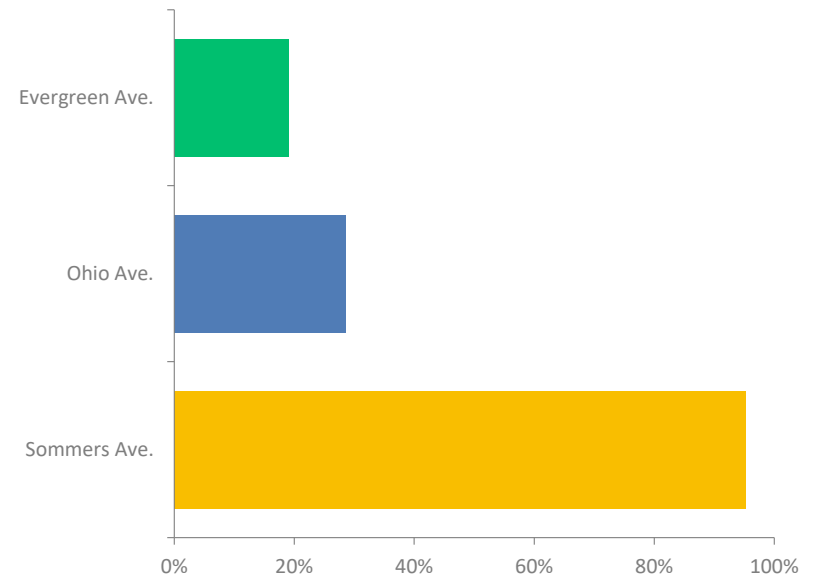


Questionnaire Results

- 37 responses – Is speeding a problem?

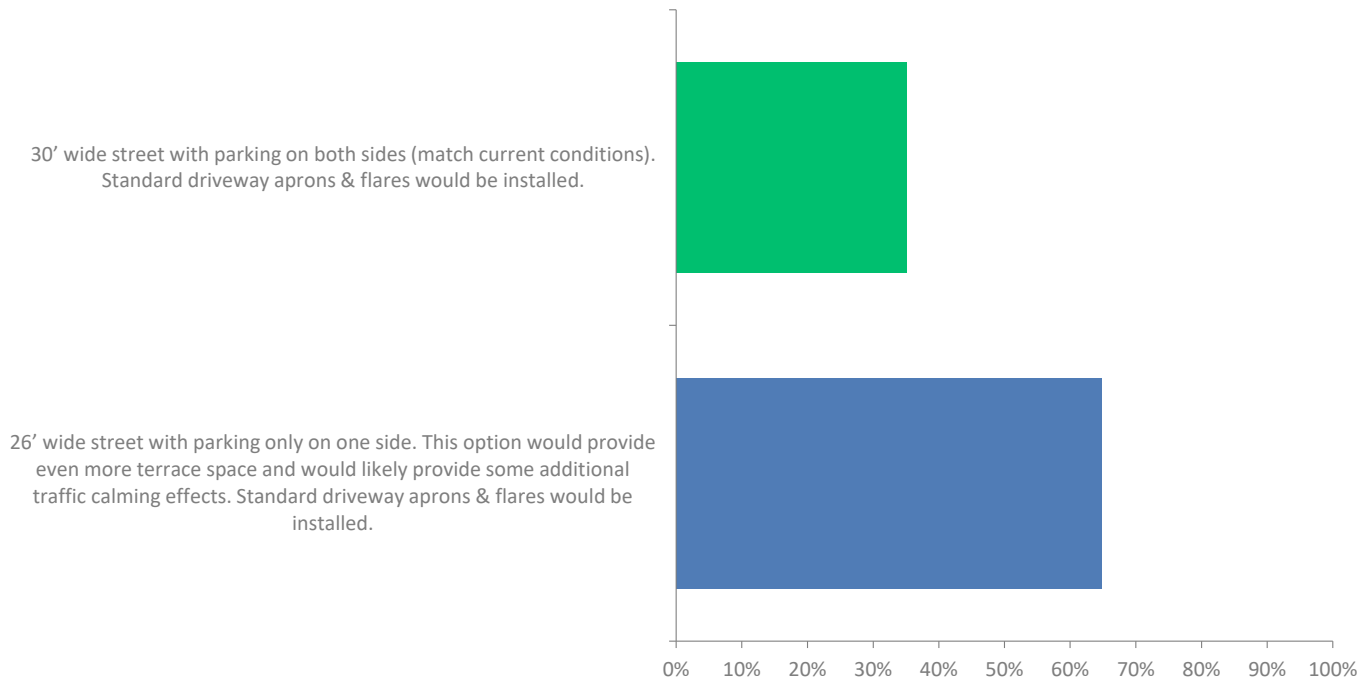


- 21 responses – Where?



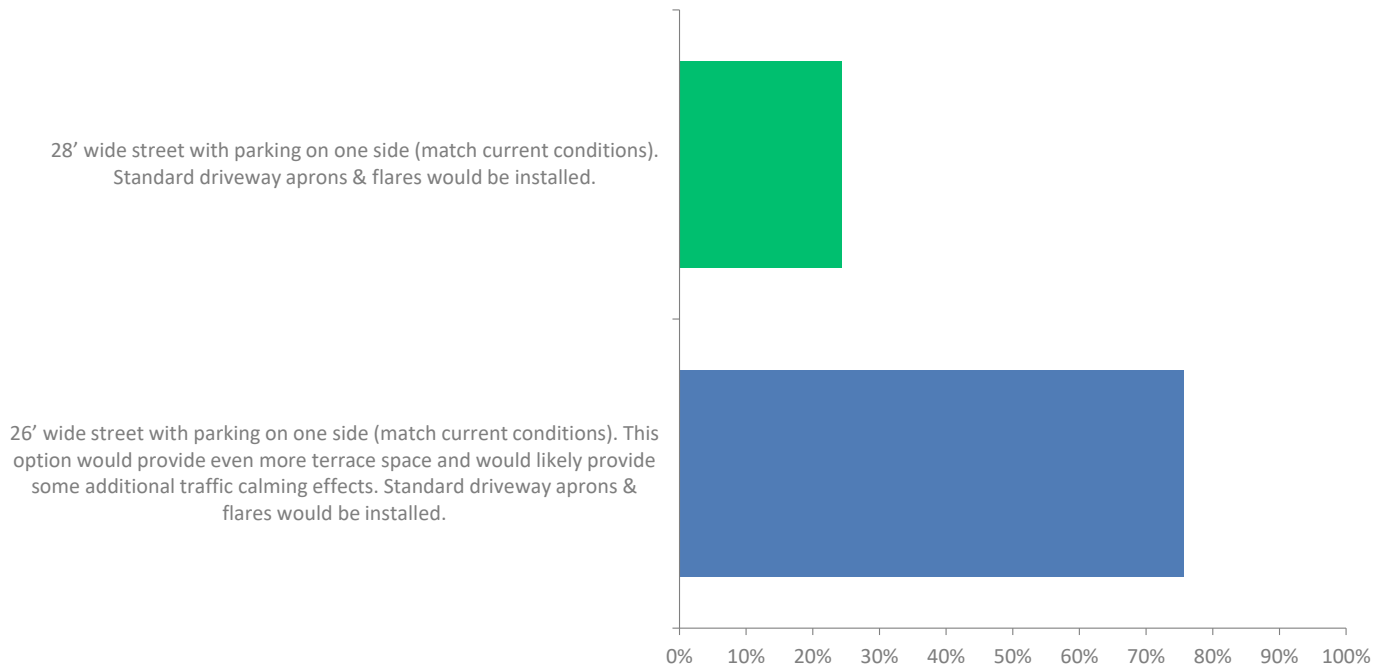
Questionnaire Results

- Design option results
 - 37 responses
- Narrow Evergreen Ave from 30' to 26' street width?



Questionnaire Results

- Design option results
 - 37 responses
- Narrow Ohio Ave from 28' to 26' street width?



Questionnaire Results

- Design option results
 - 37 responses
 - Narrow Sommers Ave from 26' to 24' street width?

