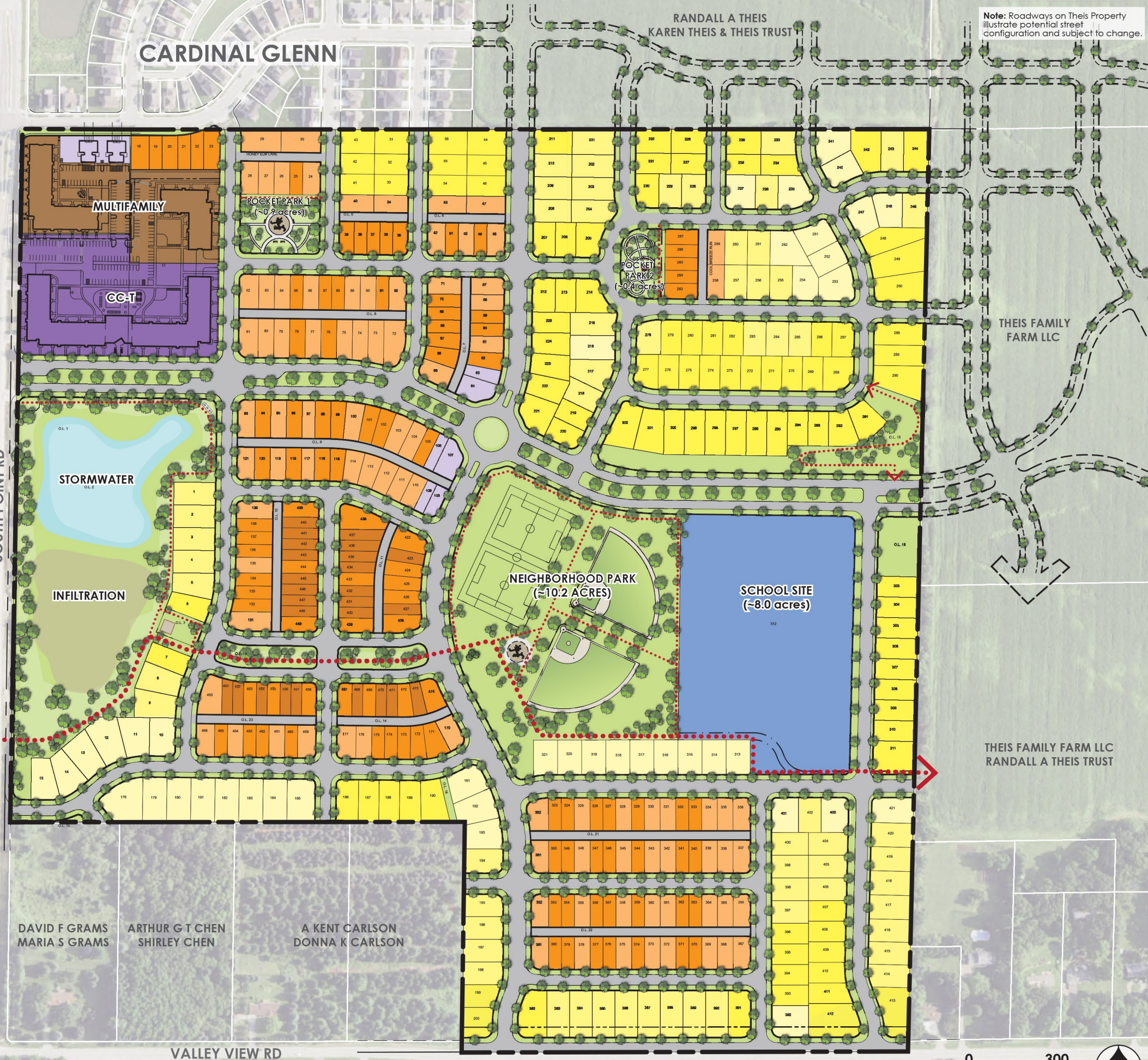


LOT TYPE	UNITS	%
CC-T	147	20%
MF	134	19%
MF TOTAL	281	39%
TWINS	10	1%
GARDEN - 31	26	4%
COTTAGE - 37	105	15%
VILLAGE - 45	92	13%
TERRACE - 59	101	14%
MANOR - 65	60	8%
ESTATE - 69	42	6%
SF TOTAL	436	61%
TOTAL	717	100%



Note: Roadways on This Property illustrate potential street configuration and subject to change.



ACACIA RIDGE NEIGHBORHOOD

MADISON, WISCONSIN

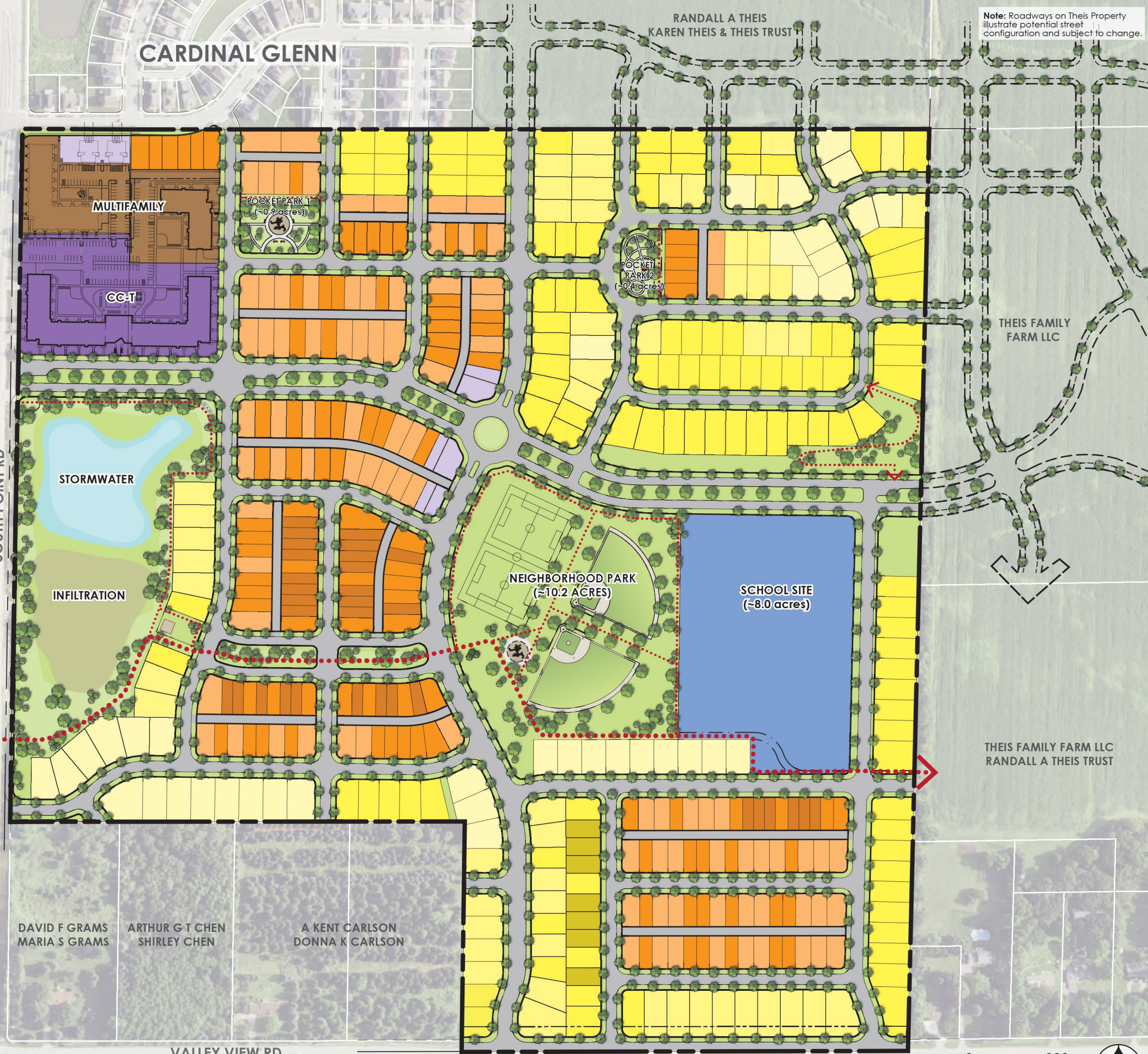
REVISED : 9.14.21

SCALE : 1"= 300'

ADOPTED:
NEIGHBORHOOD
MASTER PLAN



LOT TYPE	UNITS	%
CC-T	147	20%
MF	134	19%
MF TOTAL	281	39%
TWINS	10	1%
GARDEN - 31	32	4%
COTTAGE - 37	100	14%
VILLAGE - 45	93	13%
MEADOW - 51	7	1%
TERRACE - 59	107	15%
MANOR - 65	53	8%
ESTATE - 69	38	6%
SF TOTAL	440	61%
TOTAL	721	100%



Note: Roadways on This Property illustrate potential street configuration and subject to change.



ACACIA RIDGE NEIGHBORHOOD

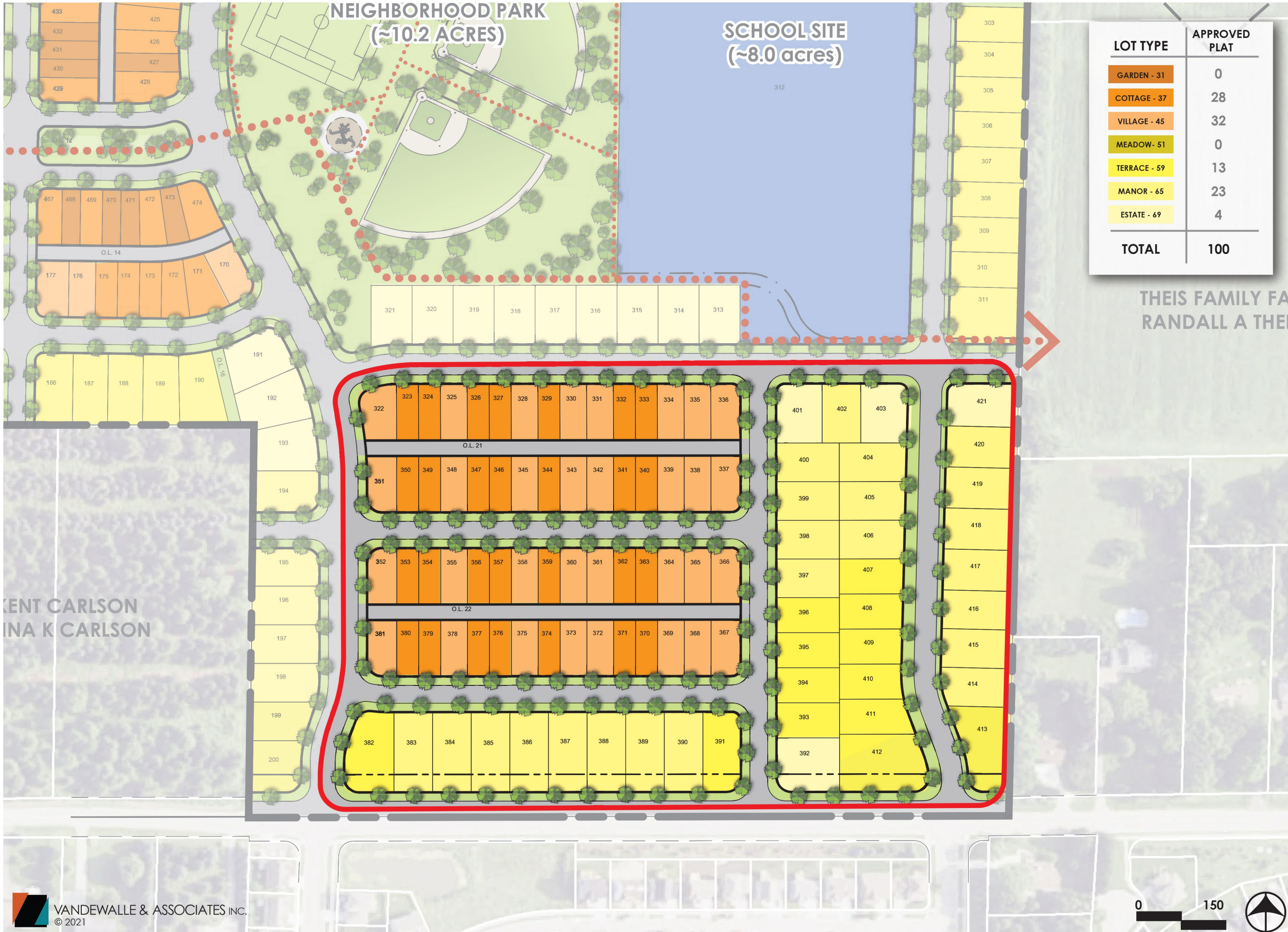
MADISON, WISCONSIN

REVISED : 9.14.21

SCALE : 1" = 300'

PROPOSED:
NEIGHBORHOOD
MASTER PLAN





**NEIGHBORHOOD PARK
(~10.2 ACRES)**

**SCHOOL SITE
(~8.0 acres)**

LOT TYPE	APPROVED PLAT
GARDEN - 31	0
COTTAGE - 37	28
VILLAGE - 45	32
MEADOW - 51	0
TERRACE - 59	13
MANOR - 65	23
ESTATE - 69	4
TOTAL	100

THIS FAMILY FA
RANDALL A THEI



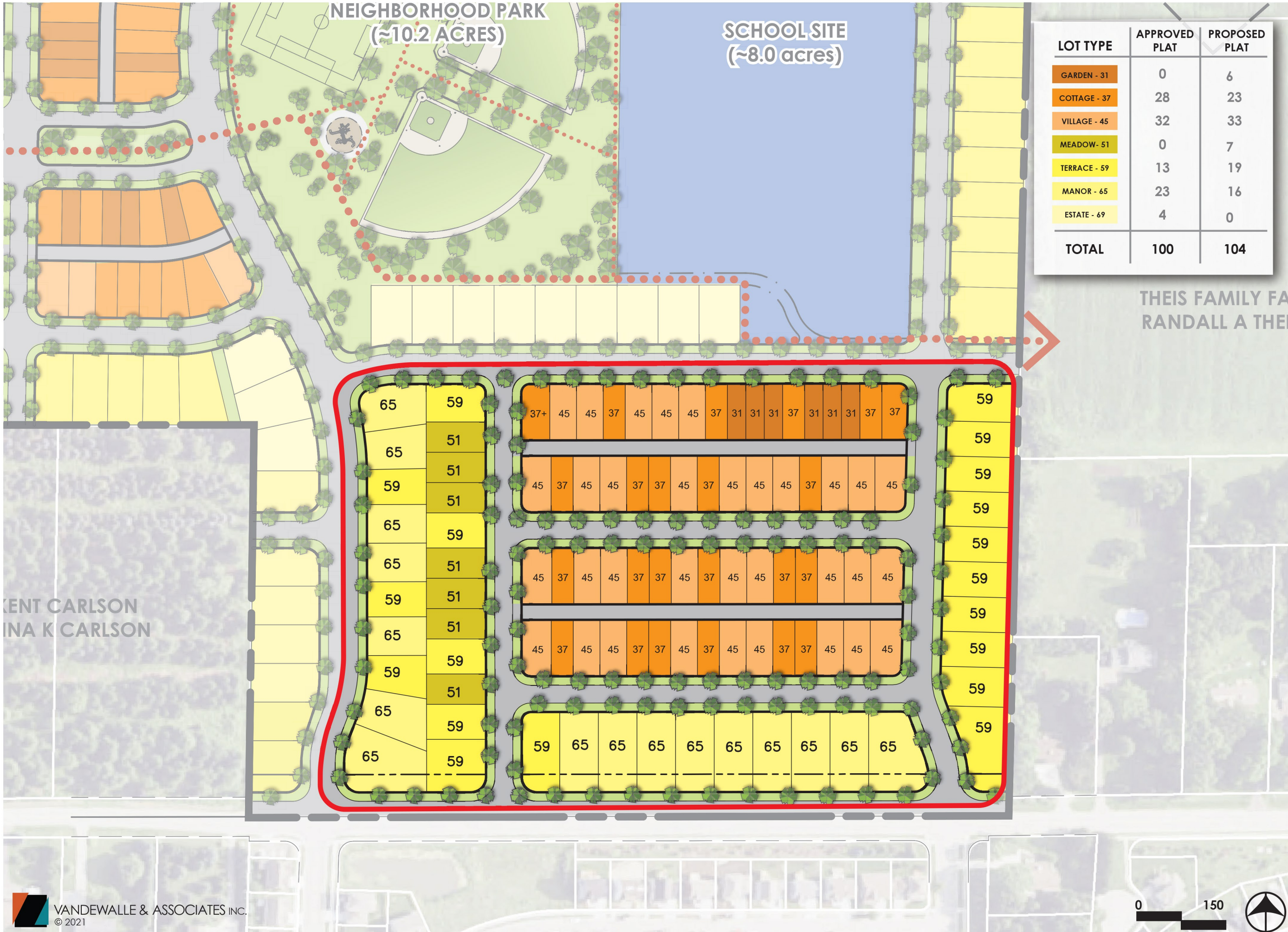
**ACACIA RIDGE NEIGHBORHOOD
MADISON, WISCONSIN**

REVISED : 9.14.21

SCALE : 1" = 150'

**ADOPTED
TR-P
MASTER PLAN**





NEIGHBORHOOD PARK
(~10.2 ACRES)

SCHOOL SITE
(~8.0 acres)

LOT TYPE	APPROVED PLAT	PROPOSED PLAT
GARDEN - 31	0	6
COTTAGE - 37	28	23
VILLAGE - 45	32	33
MEADOW - 51	0	7
TERRACE - 59	13	19
MANOR - 65	23	16
ESTATE - 69	4	0
TOTAL	100	104

THIS FAMILY FA
RANDALL A THEI

KENT CARLSON
INA K CARLSON



ACACIA RIDGE NEIGHBORHOOD
MADISON, WISCONSIN

REVISED : 9.14.21

SCALE : 1" = 150'

**PROPOSED
TR-P
MASTER PLAN**

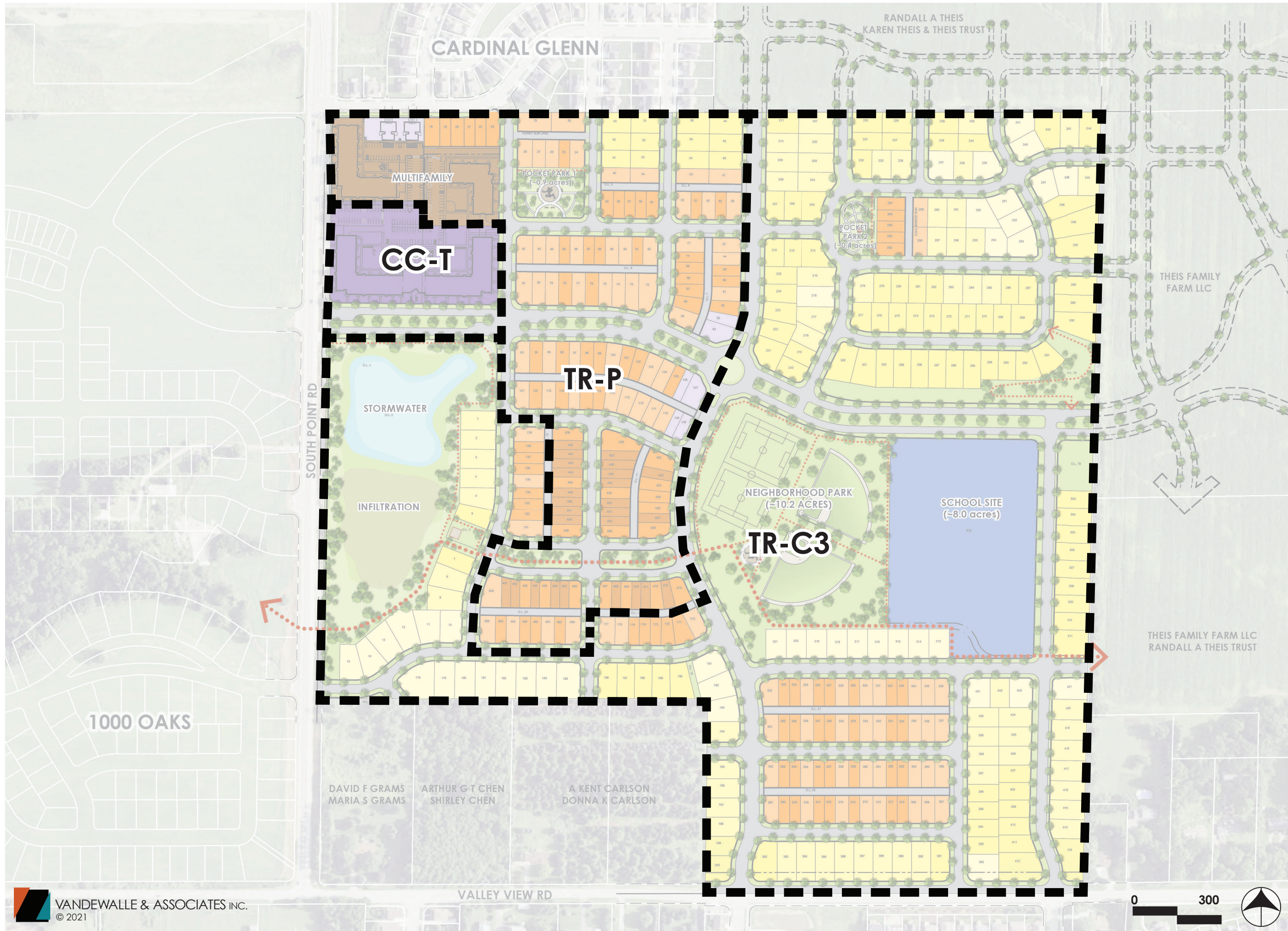


**ACACIA RIDGE NEIGHBORHOOD
MADISON, WISCONSIN**

REVISED : 10.22.21

SCALE : 1"= 300'

**EXISTING:
ZONING PLAN**



**ACACIA RIDGE NEIGHBORHOOD
MADISON, WISCONSIN**

REVISED : 10.22.21

SCALE : 1"= 300'

**PROPOSED:
ZONING PLAN**

