



Madison, Wisconsin

INDEX OF SHEETS

SHEET NO. U1 UTILITY PLAN & PROFILES

CITY OF MADISON

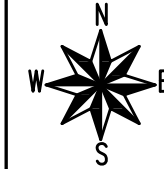
CITY ENGINEERING DIVISION

DEPARTMENT OF PUBLIC WORKS

PLAN OF PROPOSED IMPROVEMENT

ORCHARD STREET SANITARY SEWER REPAIR

CITY PROJECT NO. 12315
CONTRACT NO. 8877



PROJECT LOCATION

CONVENTIONAL SIGNS	
FIELD VERIFY ALL UTILITY LOCATIONS	
GAS	— G —
STORM SEWER	— ST —
SANITARY SEWER	— SAN —
WATER	— W —
BURIED ELECTRIC	— E —
OVERHEAD ELECTRIC	— OH —
POWER POLE	□
ADA COMPLIANT RAMP W/ DETECTABLE WARNING FIELD	▣
COMBUSTIBLE FLUIDS	☀

NOTES:
ALL GUTTERS SHALL DRAIN WITH A MINIMUM GRADE OF 0.50% TOWARD STORM SEWER INLETS.

SIDEWALK RAMPS SHALL HAVE A MAXIMUM SLOPE OF 1" PER 12". SIDEWALK AND CURB RAMPS SHALL BE CONSTRUCTED WITH A SIDE SLOPE OF 2.00%. SIDEWALK SHALL HAVE A MINIMUM LONGITUDINAL SLOPE OF 0.50% AND A MAXIMUM LONGITUDINAL SLOPE OF 5.00% EXCEPT WHERE STREET GRADES EXCEED 5.00%.

PUBLIC IMPROVEMENT PROJECT APPROVED

FEBRUARY 4, 2020

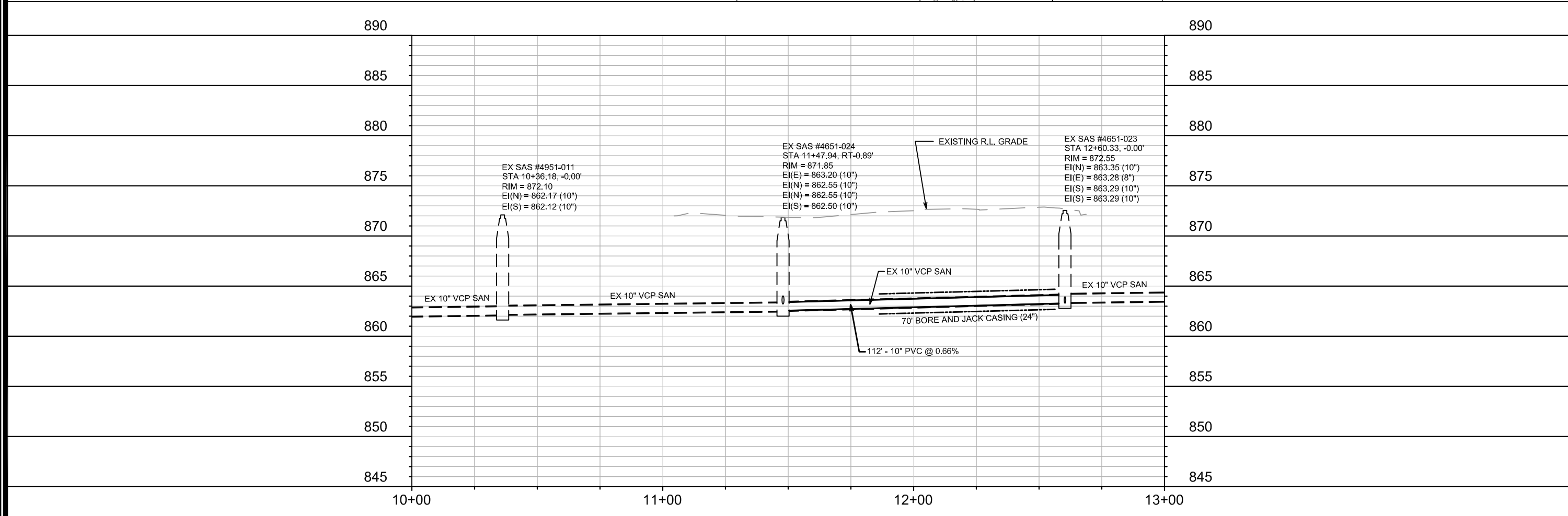
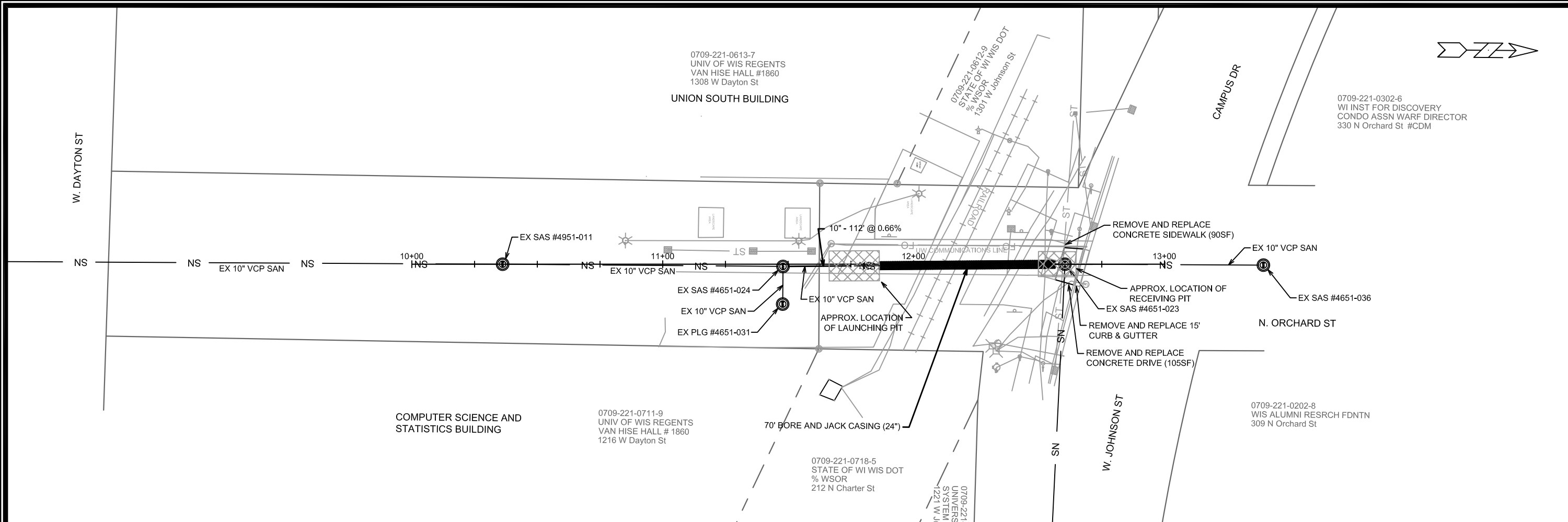
BY THE COMMON COUNCIL OF MADISON, WISCONSIN

PUBLIC IMPROVEMENT DESIGN APPROVED BY:

City Engineer _____ Date _____

SANITARY SEWER DESIGNED BY:

PLOT SCALE: 1 IN.=1 FT._XREF
PLOT NAME: —
REV. DATE: 3/2/2020 3:25 PM
ORIGINATOR: CITY_OF_MADISON



12315	MADISON, WI	8877
CONTRACT NO:		
UTILITY PLAN & PROFILE		
ORCHARD STREET SANITARY SEWER REPAIR		
M:\DESIGN\Projects\12315\CAD\Sanitary\12315SAN-Pipe Network.dwg		
12315	U-1	