



January 17, 2025

Sent Via Email

lbrown@cityofmadison.com

Mr. Ian Brown
City of Madison Urban Forestry
Madison Streets Division
1402 Wingra Creek Parkway
Madison WI 53715

Subject: Permit for Utility Line Clearance Pruning and Removal in the Public Right-of-Way

Dear Mr. Brown:

Madison Gas and Electric Company (MGE) hereby applies for a permit to conduct utility line clearance operations including pruning and removal of trees in the public right-of-way of any street, alley, highway, or other area under the jurisdiction of the City of Madison.

MGE has an obligation to perform tree pruning under Chapter PSC 114 of the Wisconsin Administrative Code. This code adopts the National Electric Safety Code for Wisconsin which provides in Section 218 that trees interfering with ungrounded electric supply conductors must be pruned or removed. MGE is required by Chapter PSC 114, adopting this code, to maintain vegetation management services to prevent serious safety hazards caused by trees becoming intertwined with the electrical conductor.

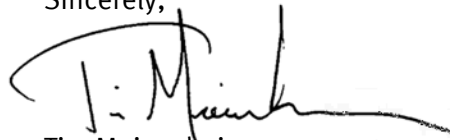
Each tree located in the public right-of-way will be assessed to determine necessary pruning dosage to achieve five years of regrowth clearance. MGE Forestry representatives will contact City Forestry if their limited visual assessment indicates a hazard tree may be present; all hazard trees will be discussed with City Forestry before work begins.

MGE and its contractors will prune or remove trees in accordance with the American National Standards Institute (ANSI) A300 and ANSI Z133.1 tree care operation standards and in accordance with the written guidelines and directives of the City Forester.

Mr. Ian Brown
Page 2
January 17, 2025

Line clearance pruning of City trees in the affected areas will begin following the approval of the Habitat Stewardship Subcommittee and City Forester. The affected areas within the City of Madison proposed for line clearance operations are listed by street name and block numbers. See Exhibit 1.

Sincerely,

A handwritten signature in black ink, appearing to read "Tim Meisenheimer". The signature is fluid and cursive, with a large initial "T" and "M".

Tim Meisenheimer
Forestry Supervisor

bw

Attachment

EXHIBIT 1
2025 Tree Trimming Block Numbers
and Street Names

2800 BLOCK OF GRANDVIEW	3100 BLOCK OF ASHFORD	2600 BLOCK OF GREENWAY
2800 BLOCK OF GRANDVIEW	3100 BLOCK OF ASHFORD	2600 BLOCK OF GREENWAY
2800 BLOCK OF GRANDVIEW	3100 BLOCK OF ASHFORD	2600 BLOCK OF GREENWAY
2800 BLOCK OF GRANDVIEW	3100 BLOCK OF ASHFORD	2600 BLOCK OF GREENWAY
2800 BLOCK OF GRANDVIEW	3100 BLOCK OF ASHFORD	2600 BLOCK OF GREENWAY
2800 BLOCK OF GRANDVIEW	3000 BLOCK OF CHURCHILL	2600 BLOCK OF GREENWAY
2800 BLOCK OF GRANDVIEW	3000 BLOCK OF CHURCHILL	2900 BLOCK OF NOTTINGHAM
2800 BLOCK OF GRANDVIEW	3000 BLOCK OF CHURCHILL	2900 BLOCK OF NOTTINGHAM
2800 BLOCK OF GRANDVIEW	3000 BLOCK OF CHURCHILL	2900 BLOCK OF NOTTINGHAM
2800 BLOCK OF GRANDVIEW	3000 BLOCK OF CHURCHILL	2900 BLOCK OF PELHAM
2800 BLOCK OF GRANDVIEW	3000 BLOCK OF CHURCHILL	2900 BLOCK OF PELHAM
2800 BLOCK OF GRANDVIEW	3000 BLOCK OF CHURCHILL	2900 BLOCK OF TODD
2800 BLOCK OF GRANDVIEW	3000 BLOCK OF CHURCHILL	3000 BLOCK OF TODD
2800 BLOCK OF GRANDVIEW	3000 BLOCK OF CHURCHILL	3000 BLOCK OF TODD
2800 BLOCK OF GRANDVIEW	3000 BLOCK OF CHURCHILL	3000 BLOCK OF TODD
2800 BLOCK OF GRANDVIEW	3000 BLOCK OF CHURCHILL	3000 BLOCK OF TODD
2800 BLOCK OF GRANDVIEW	3000 BLOCK OF CHURCHILL	3000 BLOCK OF TODD
2800 BLOCK OF GRANDVIEW	3000 BLOCK OF CHURCHILL	3000 BLOCK OF TODD
2800 BLOCK OF GRANDVIEW	3000 BLOCK OF CHURCHILL	3000 BLOCK OF TODD
2800 BLOCK OF GRANDVIEW	3000 BLOCK OF CHURCHILL	3000 BLOCK OF TODD
2800 BLOCK OF GRANDVIEW	3000 BLOCK OF CHURCHILL	3000 BLOCK OF TODD
2900 BLOCK OF GRANDVIEW	3000 BLOCK OF CHURCHILL	3000 BLOCK OF TODD
2900 BLOCK OF GRANDVIEW	3000 BLOCK OF CHURCHILL	3000 BLOCK OF TODD
2800 BLOCK OF IRVINGTON	3100 BLOCK OF CHURCHILL	3000 BLOCK OF TODD
2800 BLOCK OF IRVINGTON	3100 BLOCK OF CHURCHILL	3000 BLOCK OF TODD
3000 BLOCK OF IRVINGTON	3100 BLOCK OF CHURCHILL	3000 BLOCK OF TODD
2800 BLOCK OF KINGSTON	3100 BLOCK OF CHURCHILL	3000 BLOCK OF TODD
3300 BLOCK OF KINGSTON	3100 BLOCK OF CHURCHILL	3000 BLOCK OF TODD
3200 BLOCK OF KNOLLWOOD	3100 BLOCK OF CHURCHILL	3000 BLOCK OF TODD
3200 BLOCK OF KNOLLWOOD	3100 BLOCK OF CHURCHILL	3000 BLOCK OF TODD
3200 BLOCK OF KNOLLWOOD	3100 BLOCK OF CHURCHILL	3000 BLOCK OF TODD
3100 BLOCK OF LEYTON	3100 BLOCK OF CHURCHILL	3000 BLOCK OF TODD
3100 BLOCK OF LEYTON	3100 BLOCK OF CHURCHILL	3000 BLOCK OF TODD
3100 BLOCK OF LEYTON	3100 BLOCK OF CHURCHILL	3000 BLOCK OF TODD
3300 BLOCK OF LEYTON	3100 BLOCK OF CHURCHILL	3000 BLOCK OF TODD
3300 BLOCK OF LEYTON	3200 BLOCK OF CHURCHILL	3000 BLOCK OF TODD
3100 BLOCK OF PELHAM	3200 BLOCK OF CHURCHILL	3000 BLOCK OF TODD
2700 BLOCK OF POST	3200 BLOCK OF CHURCHILL	3000 BLOCK OF TODD
2800 BLOCK OF POST	3200 BLOCK OF CHURCHILL	3000 BLOCK OF TODD
3000 BLOCK OF ASHFORD	3200 BLOCK OF CHURCHILL	3100 BLOCK OF TODD
3000 BLOCK OF ASHFORD	3200 BLOCK OF CHURCHILL	3100 BLOCK OF TODD
3100 BLOCK OF ASHFORD	2500 BLOCK OF GREENWAY	3100 BLOCK OF TODD

EXHIBIT 1
2025 Tree Trimming Block Numbers
and Street Names

600 BLOCK OF PIPER	4300 BLOCK OF TRAVIS	4300 BLOCK OF CRAWFORD
600 BLOCK OF PIPER	4400 BLOCK OF TRAVIS	1800 BLOCK OF DANBURY
600 BLOCK OF PIPER	4400 BLOCK OF VALE	1900 BLOCK OF DANBURY
600 BLOCK OF PIPER	4400 BLOCK OF WAITE	1900 BLOCK OF DANBURY
600 BLOCK OF PIPER	4400 BLOCK OF WAITE	1900 BLOCK OF DANBURY
600 BLOCK OF PIPER	4400 BLOCK OF WAITE	1900 BLOCK OF DANBURY
600 BLOCK OF PIPER	600 BLOCK OF YORK	1900 BLOCK OF DANBURY
600 BLOCK OF PIPER	600 BLOCK OF YORK	1900 BLOCK OF DANBURY
600 BLOCK OF PIPER	2000 BLOCK OF AXEL	1900 BLOCK OF DANBURY
600 BLOCK OF PIPER	2000 BLOCK OF AXEL	1900 BLOCK OF DANBURY
600 BLOCK OF PIPER	2000 BLOCK OF AXEL	2000 BLOCK OF DANBURY
600 BLOCK OF PIPER	2000 BLOCK OF AXEL	2000 BLOCK OF DANBURY
600 BLOCK OF PIPER	4300 BLOCK OF CLOVER	2000 BLOCK OF DANBURY
4200 BLOCK OF ROLLA	4300 BLOCK OF CLOVER	2000 BLOCK OF DANBURY
4200 BLOCK OF ROLLA	4300 BLOCK OF CRAWFORD	2000 BLOCK OF DANBURY
4200 BLOCK OF ROLLA	4300 BLOCK OF CRAWFORD	2000 BLOCK OF DANBURY
4300 BLOCK OF ROLLA	4300 BLOCK OF CRAWFORD	2000 BLOCK OF DANBURY
4400 BLOCK OF ROLLA	4300 BLOCK OF CRAWFORD	2000 BLOCK OF DANBURY
4400 BLOCK OF ROLLA	4300 BLOCK OF CRAWFORD	2000 BLOCK OF DANBURY
4400 BLOCK OF ROLLA	4300 BLOCK OF CRAWFORD	2000 BLOCK OF DANBURY
4400 BLOCK OF ROLLA	4300 BLOCK OF CRAWFORD	2000 BLOCK OF DANBURY
4300 BLOCK OF SOMERSET	4300 BLOCK OF CRAWFORD	2100 BLOCK OF DANBURY
4300 BLOCK OF SOMERSET	4300 BLOCK OF CRAWFORD	2100 BLOCK OF DANBURY
4300 BLOCK OF SOMERSET	4300 BLOCK OF CRAWFORD	2100 BLOCK OF DANBURY
4300 BLOCK OF SOMERSET	4300 BLOCK OF CRAWFORD	2200 BLOCK OF DANBURY
4300 BLOCK OF SOMERSET	4300 BLOCK OF CRAWFORD	2200 BLOCK OF DANBURY
4300 BLOCK OF SOMERSET	4300 BLOCK OF CRAWFORD	2200 BLOCK OF DANBURY
4400 BLOCK OF SOMERSET	4300 BLOCK OF CRAWFORD	2200 BLOCK OF DANBURY
4400 BLOCK OF SOMERSET	4300 BLOCK OF CRAWFORD	2200 BLOCK OF DANBURY
4400 BLOCK OF SOMERSET	4300 BLOCK OF CRAWFORD	2300 BLOCK OF DANBURY
4400 BLOCK OF SOMERSET	4300 BLOCK OF CRAWFORD	2300 BLOCK OF DANBURY
4000 BLOCK OF TOKAY	4300 BLOCK OF CRAWFORD	2300 BLOCK OF DANBURY
4000 BLOCK OF TOKAY	4300 BLOCK OF CRAWFORD	2300 BLOCK OF DANBURY
4000 BLOCK OF TOKAY	4300 BLOCK OF CRAWFORD	1800 BLOCK OF SEMINOLE
4000 BLOCK OF TOKAY	4300 BLOCK OF CRAWFORD	1800 BLOCK OF SEMINOLE
4000 BLOCK OF TOKAY	4300 BLOCK OF CRAWFORD	1800 BLOCK OF SEMINOLE
4000 BLOCK OF TOKAY	4300 BLOCK OF CRAWFORD	1800 BLOCK OF SEMINOLE
4000 BLOCK OF TOKAY	4300 BLOCK OF CRAWFORD	1900 BLOCK OF SEMINOLE
4000 BLOCK OF TOKAY	4300 BLOCK OF CRAWFORD	1900 BLOCK OF SEMINOLE
4600 BLOCK OF TOKAY	4300 BLOCK OF CRAWFORD	1900 BLOCK OF SEMINOLE
4300 BLOCK OF TRAVIS	4300 BLOCK OF CRAWFORD	1900 BLOCK OF SEMINOLE

EXHIBIT 1
2025 Tree Trimming Block Numbers
and Street Names

1800 BLOCK OF BELD	600 BLOCK OF BRAM	600 BLOCK OF KENWARD
1800 BLOCK OF BELD	400 BLOCK OF CENTER	900 BLOCK OF NORTH
1900 BLOCK OF BELD	400 BLOCK OF CENTER	2100 BLOCK OF TAFT
1900 BLOCK OF BELD	600 BLOCK OF CENTER	2100 BLOCK OF TAFT
1900 BLOCK OF BELD	600 BLOCK OF CENTER	2100 BLOCK OF TAFT
1900 BLOCK OF BELD	600 BLOCK OF CENTER	2100 BLOCK OF TAFT
1900 BLOCK OF BELD	1700 BLOCK OF FISHER	2000 BLOCK OF TAYLOR
1900 BLOCK OF BELD	1700 BLOCK OF FISHER	2000 BLOCK OF TAYLOR
2000 BLOCK OF BELD	1700 BLOCK OF FISHER	4900 BLOCK OF COTTAGE
2000 BLOCK OF BELD	1700 BLOCK OF FISHER	GROVE
400 BLOCK OF BRAM	1700 BLOCK OF FISHER	4900 BLOCK OF COTTAGE
400 BLOCK OF BRAM	1700 BLOCK OF FISHER	GROVE
400 BLOCK OF BRAM	1700 BLOCK OF FISHER	4900 BLOCK OF COTTAGE
400 BLOCK OF BRAM	1700 BLOCK OF FISHER	GROVE
400 BLOCK OF BRAM	1700 BLOCK OF FISHER	5000 BLOCK OF COTTAGE
400 BLOCK OF BRAM	1700 BLOCK OF FISHER	GROVE
400 BLOCK OF BRAM	1700 BLOCK OF FISHER	5100 BLOCK OF COTTAGE
400 BLOCK OF BRAM	1700 BLOCK OF FISHER	GROVE
400 BLOCK OF BRAM	1800 BLOCK OF FISHER	900 BLOCK OF MEADOWLARK
400 BLOCK OF BRAM	1800 BLOCK OF FISHER	900 BLOCK OF MEADOWLARK
400 BLOCK OF BRAM	1800 BLOCK OF FISHER	7000 BLOCK OF SAWMILL
400 BLOCK OF BRAM	1800 BLOCK OF FISHER	7000 BLOCK OF COLONY
400 BLOCK OF BRAM	1800 BLOCK OF FISHER	7000 BLOCK OF COLONY
500 BLOCK OF BRAM	1800 BLOCK OF FISHER	7000 BLOCK OF COLONY
500 BLOCK OF BRAM	1800 BLOCK OF FISHER	7000 BLOCK OF FARMINGTON
500 BLOCK OF BRAM	1800 BLOCK OF FISHER	400 BLOCK OF N GAMMON
500 BLOCK OF BRAM	1800 BLOCK OF FISHER	400 BLOCK OF N GAMMON
500 BLOCK OF BRAM	1800 BLOCK OF FISHER	400 BLOCK OF N GAMMON
600 BLOCK OF BRAM	1800 BLOCK OF FISHER	400 BLOCK OF N GAMMON
600 BLOCK OF BRAM	1800 BLOCK OF FISHER	400 BLOCK OF N GAMMON
600 BLOCK OF BRAM	1800 BLOCK OF FISHER	500 BLOCK OF N GAMMON
600 BLOCK OF BRAM	1800 BLOCK OF FISHER	500 BLOCK OF N GAMMON
600 BLOCK OF BRAM	1800 BLOCK OF FISHER	500 BLOCK OF N GAMMON
600 BLOCK OF BRAM	1800 BLOCK OF FISHER	500 BLOCK OF N GAMMON
600 BLOCK OF BRAM	1800 BLOCK OF FISHER	500 BLOCK OF N GAMMON
600 BLOCK OF BRAM	1800 BLOCK OF FISHER	500 BLOCK OF N GAMMON
600 BLOCK OF BRAM	1800 BLOCK OF FISHER	500 BLOCK OF N GAMMON
600 BLOCK OF BRAM	1800 BLOCK OF FISHER	500 BLOCK OF N GAMMON
600 BLOCK OF BRAM	1800 BLOCK OF FISHER	500 BLOCK OF N GAMMON
600 BLOCK OF BRAM	1900 BLOCK OF FISHER	6300 BLOCK OF MASTHEAD
600 BLOCK OF BRAM	2000 BLOCK OF FISHER	6300 BLOCK OF MASTHEAD

EXHIBIT 1
2025 Tree Trimming Block Numbers
and Street Names

5700 BLOCK OF ANCHORAGE	5700 BLOCK OF BITTERSWEET	5500 BLOCK OF PARK
5900 BLOCK OF CABLE	5700 BLOCK OF BITTERSWEET	5500 BLOCK OF PARK
5600 BLOCK OF CRESTWOOD	5700 BLOCK OF BITTERSWEET	5400 BLOCK OF REGENT
5600 BLOCK OF CRESTWOOD	5700 BLOCK OF BITTERSWEET	0 BLOCK OF N ROCK
5600 BLOCK OF CRESTWOOD	5700 BLOCK OF BITTERSWEET	0 BLOCK OF N ROCK
5600 BLOCK OF CRESTWOOD	5700 BLOCK OF BITTERSWEET	0 BLOCK OF N ROCK
5600 BLOCK OF CRESTWOOD	5700 BLOCK OF BITTERSWEET	0 BLOCK OF N ROCK
5600 BLOCK OF CRESTWOOD	5700 BLOCK OF BITTERSWEET	0 BLOCK OF N ROCK
5600 BLOCK OF CRESTWOOD	5700 BLOCK OF BITTERSWEET	0 BLOCK OF N ROCK
5600 BLOCK OF CRESTWOOD	5700 BLOCK OF BITTERSWEET	0 BLOCK OF N ROCK
5600 BLOCK OF CRESTWOOD	5700 BLOCK OF BITTERSWEET	100 BLOCK OF S ROCK
5700 BLOCK OF DRIFTWOOD	5700 BLOCK OF BITTERSWEET	0 BLOCK OF N ROSA
5800 BLOCK OF DRIFTWOOD	5700 BLOCK OF BITTERSWEET	100 BLOCK OF N ROSA
200 BLOCK OF EDDY	5700 BLOCK OF BITTERSWEET	200 BLOCK OF N ROSA
200 BLOCK OF EDDY	5700 BLOCK OF BITTERSWEET	500 BLOCK OF N ROSA
200 BLOCK OF EDDY	5700 BLOCK OF BITTERSWEET	5600 BLOCK OF STADIUM
100 BLOCK OF FRIGATE	5700 BLOCK OF BITTERSWEET	5600 BLOCK OF STADIUM
200 BLOCK OF FRIGATE	5700 BLOCK OF BITTERSWEET	5600 BLOCK OF STADIUM
200 BLOCK OF FRIGATE	5700 BLOCK OF BITTERSWEET	5600 BLOCK OF STADIUM
200 BLOCK OF FRIGATE	5700 BLOCK OF BITTERSWEET	5500 BLOCK OF TERRE HAUTE
200 BLOCK OF FRIGATE	5700 BLOCK OF BITTERSWEET	5500 BLOCK OF TERRE HAUTE
200 BLOCK OF FRIGATE	5700 BLOCK OF BITTERSWEET	5500 BLOCK OF TESLA
6100 BLOCK OF HAWSER	100 BLOCK OF CARILLON	5500 BLOCK OF TESLA
100 BLOCK OF ISLAND	100 BLOCK OF CARILLON	5500 BLOCK OF TESLA
200 BLOCK OF ISLAND	100 BLOCK OF CARILLON	5500 BLOCK OF TESLA
0 BLOCK OF S ROSA	100 BLOCK OF CARILLON	5400 BLOCK OF TREMPPEALEAU
0 BLOCK OF S ROSA	5700 BLOCK OF ELDER	5400 BLOCK OF TREMPPEALEAU
0 BLOCK OF S ROSA	5700 BLOCK OF ELDER	5500 BLOCK OF VARSITY
0 BLOCK OF S ROSA	5700 BLOCK OF ELDER	5500 BLOCK OF VARSITY
200 BLOCK OF S ROSA	5700 BLOCK OF ELDER	5500 BLOCK OF VARSITY
5700 BLOCK OF SOUTH HILL	5700 BLOCK OF ELDER	5500 BLOCK OF VARSITY
5900 BLOCK OF SOUTH HILL	5700 BLOCK OF ELDER	5600 BLOCK OF VARSITY
5900 BLOCK OF SOUTH HILL	100 BLOCK OF S KENOSHA	0 BLOCK OF WAKEMAN
5900 BLOCK OF SOUTH HILL	200 BLOCK OF S KENOSHA	0 BLOCK OF WAKEMAN
5900 BLOCK OF SOUTH HILL	5500 BLOCK OF MARCONI	0 BLOCK OF WAKEMAN
5700 BLOCK OF BITTERSWEET	5500 BLOCK OF MARCONI	0 BLOCK OF WAKEMAN
5700 BLOCK OF BITTERSWEET	5500 BLOCK OF MARCONI	0 BLOCK OF WAKEMAN
5700 BLOCK OF BITTERSWEET	0 BLOCK OF MARK TWAIN	5300 BLOCK OF GETTLE
5700 BLOCK OF BITTERSWEET	0 BLOCK OF MARK TWAIN	5400 BLOCK OF GETTLE
5700 BLOCK OF BITTERSWEET	0 BLOCK OF MARK TWAIN	5400 BLOCK OF GETTLE
5700 BLOCK OF BITTERSWEET	5500 BLOCK OF PARK	5400 BLOCK OF GETTLE
5700 BLOCK OF BITTERSWEET	5500 BLOCK OF PARK	5400 BLOCK OF GETTLE

EXHIBIT 1
2025 Tree Trimming Block Numbers
and Street Names

5600 BLOCK OF OLD MIDDLETON	5100 BLOCK OF MARATHON	100 BLOCK OF S BRITTINGHAM
5600 BLOCK OF OLD MIDDLETON	5100 BLOCK OF MARATHON	700 BLOCK OF W BRITTINGHAM
5600 BLOCK OF OLD MIDDLETON	5100 BLOCK OF MARATHON	700 BLOCK OF W BRITTINGHAM
5600 BLOCK OF OLD MIDDLETON	5200 BLOCK OF REGENT	700 BLOCK OF W BRITTINGHAM
5600 BLOCK OF OLD MIDDLETON	5200 BLOCK OF REGENT	700 BLOCK OF W BRITTINGHAM
5600 BLOCK OF OLD MIDDLETON	5200 BLOCK OF REGENT	700 BLOCK OF W BRITTINGHAM
5600 BLOCK OF OLD MIDDLETON	5300 BLOCK OF REGENT	700 BLOCK OF W BRITTINGHAM
5600 BLOCK OF OLD MIDDLETON	5300 BLOCK OF REGENT	100 BLOCK OF PROUDFIT
5600 BLOCK OF OLD MIDDLETON	5300 BLOCK OF REGENT	100 BLOCK OF PROUDFIT
5700 BLOCK OF OLD SAUK	5200 BLOCK OF SHAWANO	100 BLOCK OF PROUDFIT
5700 BLOCK OF OLD SAUK	5200 BLOCK OF SHAWANO	100 BLOCK OF PROUDFIT
5700 BLOCK OF OLD SAUK	5200 BLOCK OF SHAWANO	100 BLOCK OF RODNEY
1100 BLOCK OF PAULINE	5200 BLOCK OF SHAWANO	0 BLOCK OF S HANCOCK
1200 BLOCK OF TEMKIN	5200 BLOCK OF SHAWANO	0 BLOCK OF S HANCOCK
1200 BLOCK OF TEMKIN	5200 BLOCK OF SOUTH HILL	0 BLOCK OF S HANCOCK
1200 BLOCK OF TEMKIN	5200 BLOCK OF SOUTH HILL	100 BLOCK OF S HANCOCK
5200 BLOCK OF BURNETT	5200 BLOCK OF SOUTH HILL	100 BLOCK OF S HANCOCK
5200 BLOCK OF BURNETT	0 BLOCK OF S WHITNEY	100 BLOCK OF S HANCOCK
5200 BLOCK OF BURNETT	0 BLOCK OF S WHITNEY	100 BLOCK OF S HANCOCK
5200 BLOCK OF BURNETT	0 BLOCK OF S WHITNEY	700 BLOCK OF JENIFER
5100 BLOCK OF DOOR	0 BLOCK OF S WHITNEY	700 BLOCK OF JENIFER
5100 BLOCK OF DOOR	100 BLOCK OF S WHITNEY	700 BLOCK OF JENIFER
5100 BLOCK OF DOOR	100 BLOCK OF S BRITTINGHAM	700 BLOCK OF JENIFER
5100 BLOCK OF DOOR	100 BLOCK OF S BRITTINGHAM	700 BLOCK OF JENIFER
100 BLOCK OF GREEN LAKE	100 BLOCK OF S BRITTINGHAM	700 BLOCK OF JENIFER
100 BLOCK OF GREEN LAKE	100 BLOCK OF S BRITTINGHAM	700 BLOCK OF JENIFER
100 BLOCK OF GREEN LAKE	100 BLOCK OF S BRITTINGHAM	700 BLOCK OF JENIFER
100 BLOCK OF GREEN LAKE	100 BLOCK OF S BRITTINGHAM	700 BLOCK OF JENIFER
5100 BLOCK OF JUNEAU	100 BLOCK OF S BRITTINGHAM	800 BLOCK OF JENIFER
5100 BLOCK OF JUNEAU	100 BLOCK OF S BRITTINGHAM	800 BLOCK OF JENIFER
5100 BLOCK OF JUNEAU	100 BLOCK OF S BRITTINGHAM	800 BLOCK OF JENIFER
5100 BLOCK OF JUNEAU	100 BLOCK OF S BRITTINGHAM	800 BLOCK OF JENIFER
5200 BLOCK OF MANITOWOC	100 BLOCK OF S BRITTINGHAM	800 BLOCK OF JENIFER
5200 BLOCK OF MANITOWOC	100 BLOCK OF S BRITTINGHAM	800 BLOCK OF JENIFER
5200 BLOCK OF MANITOWOC	100 BLOCK OF S BRITTINGHAM	800 BLOCK OF JENIFER
5200 BLOCK OF MANITOWOC	100 BLOCK OF S BRITTINGHAM	800 BLOCK OF JENIFER
5200 BLOCK OF MANITOWOC	100 BLOCK OF S BRITTINGHAM	800 BLOCK OF JENIFER
5200 BLOCK OF MANITOWOC	100 BLOCK OF S BRITTINGHAM	900 BLOCK OF JENIFER
5200 BLOCK OF MANITOWOC	100 BLOCK OF S BRITTINGHAM	900 BLOCK OF JENIFER
5200 BLOCK OF MANITOWOC	100 BLOCK OF S BRITTINGHAM	900 BLOCK OF JENIFER
5200 BLOCK OF MANITOWOC	100 BLOCK OF S BRITTINGHAM	900 BLOCK OF JENIFER
5100 BLOCK OF MARATHON	100 BLOCK OF S BRITTINGHAM	900 BLOCK OF JENIFER

EXHIBIT 1
2025 Tree Trimming Block Numbers
and Street Names

3400 BLOCK OF WEBB	4400 BLOCK OF MILWAUKEE	5000 BLOCK OF OPEN WOOD
3400 BLOCK OF WEBB	4400 BLOCK OF MILWAUKEE	5100 BLOCK OF OPEN WOOD
3400 BLOCK OF WEBB	400 BLOCK OF TOPAZ	5100 BLOCK OF OPEN WOOD
3400 BLOCK OF WEBB	4500 BLOCK OF TURQUOISE	5100 BLOCK OF OPEN WOOD
3500 BLOCK OF WEBB	4500 BLOCK OF TURQUOISE	5100 BLOCK OF OPEN WOOD
3500 BLOCK OF WEBB	4500 BLOCK OF TURQUOISE	5300 BLOCK OF QUEENSBRIDGE
3300 BLOCK OF WELLS	4500 BLOCK OF TURQUOISE	5400 BLOCK OF RETANA
3300 BLOCK OF WELLS	500 BLOCK OF VERNON	5000 BLOCK OF TWIN OAKS
3300 BLOCK OF WELLS	500 BLOCK OF VERNON	5400 BLOCK OF VICAR
3300 BLOCK OF WELLS	500 BLOCK OF VERNON	5400 BLOCK OF VICAR
3300 BLOCK OF WELLS	500 BLOCK OF VERNON	400 BLOCK OF WHITEHALL
3300 BLOCK OF WELLS	5000 BLOCK OF COTTAGE GROVE	300 BLOCK OF TROY
3300 BLOCK OF WELLS	700 BLOCK OF HARMONY HILL	4000 BLOCK OF VEITH
3300 BLOCK OF WELLS	700 BLOCK OF HARMONY HILL	4100 BLOCK OF VEITH
3300 BLOCK OF WELLS	900 BLOCK OF INWOOD	4100 BLOCK OF VEITH
3100 BLOCK OF WORTHINGTON	5100 BLOCK OF KEVINS	4100 BLOCK OF VEITH
3200 BLOCK OF WORTHINGTON	5200 BLOCK OF KEVINS	4100 BLOCK OF VEITH
3200 BLOCK OF WORTHINGTON	5300 BLOCK OF KEVINS	4100 BLOCK OF VEITH
200 BLOCK OF CRYSTAL	5300 BLOCK OF KINGSBRIDGE	4100 BLOCK OF VEITH
200 BLOCK OF CRYSTAL	5300 BLOCK OF KINGSBRIDGE	4100 BLOCK OF VEITH
200 BLOCK OF CRYSTAL	5300 BLOCK OF KINGSBRIDGE	4100 BLOCK OF VEITH
200 BLOCK OF CRYSTAL	5300 BLOCK OF KINGSBRIDGE	4100 BLOCK OF VEITH
4400 BLOCK OF DIAMOND	5300 BLOCK OF KNIGHTSBRIDGE	4100 BLOCK OF VEITH
4400 BLOCK OF DIAMOND	900 BLOCK OF MEADOWLARK	4100 BLOCK OF VEITH
4400 BLOCK OF DIAMOND	900 BLOCK OF MEADOWLARK	4100 BLOCK OF VEITH
4500 BLOCK OF DIAMOND	500 BLOCK OF MERRYTURN	4100 BLOCK OF VEITH
0 BLOCK OF ELLIE	500 BLOCK OF MERRYTURN	4100 BLOCK OF VEITH
0 BLOCK OF ELLIE	500 BLOCK OF MERRYTURN	4100 BLOCK OF VEITH
0 BLOCK OF ELLIE	500 BLOCK OF MERRYTURN	4100 BLOCK OF VEITH
0 BLOCK OF ELLIE	500 BLOCK OF MERRYTURN	4100 BLOCK OF VEITH
0 BLOCK OF GARNET	600 BLOCK OF MERRYTURN	4100 BLOCK OF VEITH
0 BLOCK OF GARNET	600 BLOCK OF MERRYTURN	4100 BLOCK OF VEITH
0 BLOCK OF GARNET	600 BLOCK OF MERRYTURN	4100 BLOCK OF VEITH
300 BLOCK OF GARNET	600 BLOCK OF MERRYTURN	4100 BLOCK OF VEITH
300 BLOCK OF GARNET	600 BLOCK OF MERRYTURN	4100 BLOCK OF VEITH
4500 BLOCK OF JADE	700 BLOCK OF MERRYTURN	4100 BLOCK OF VEITH
4500 BLOCK OF JADE	700 BLOCK OF MERRYTURN	4100 BLOCK OF VEITH
4500 BLOCK OF JADE	700 BLOCK OF MERRYTURN	4100 BLOCK OF VEITH
4500 BLOCK OF JADE	5000 BLOCK OF OPEN WOOD	4200 BLOCK OF VEITH
4400 BLOCK OF MILWAUKEE	5000 BLOCK OF OPEN WOOD	0 BLOCK OF BADEAU

EXHIBIT 1
2025 Tree Trimming Block Numbers
and Street Names

700 BLOCK OF DELLADONNA	3400 BLOCK OF MARCY	500 BLOCK OF NOVA
3400 BLOCK OF HARPER	3400 BLOCK OF MARCY	500 BLOCK OF NOVA
3400 BLOCK OF HARPER	3500 BLOCK OF MARCY	500 BLOCK OF NOVA
3400 BLOCK OF HARPER	3500 BLOCK OF MARCY	500 BLOCK OF NOVA
3400 BLOCK OF HARPER	3500 BLOCK OF MARCY	500 BLOCK OF NOVA
3500 BLOCK OF HARPER	3500 BLOCK OF MARCY	500 BLOCK OF NOVA
3500 BLOCK OF HARPER	3500 BLOCK OF MARCY	500 BLOCK OF NOVA
3500 BLOCK OF HARPER	3500 BLOCK OF MARCY	500 BLOCK OF NOVA
3500 BLOCK OF HARPER	3500 BLOCK OF MARCY	500 BLOCK OF NOVA
3500 BLOCK OF HARPER	3500 BLOCK OF MARCY	500 BLOCK OF NOVA
3500 BLOCK OF HARPER	3500 BLOCK OF MARCY	500 BLOCK OF NOVA
3500 BLOCK OF HARPER	3500 BLOCK OF MARCY	500 BLOCK OF NOVA
3500 BLOCK OF HARPER	3500 BLOCK OF MARCY	500 BLOCK OF NOVA
3600 BLOCK OF HARPER	3500 BLOCK OF MARCY	500 BLOCK OF NOVA
3600 BLOCK OF HARPER	3500 BLOCK OF MARCY	500 BLOCK OF NOVA
600 BLOCK OF HINTZE	3500 BLOCK OF MARCY	500 BLOCK OF NOVA
600 BLOCK OF HINTZE	3500 BLOCK OF MARCY	500 BLOCK OF NOVA
600 BLOCK OF HINTZE	3500 BLOCK OF MARCY	500 BLOCK OF NOVA
600 BLOCK OF HINTZE	3500 BLOCK OF MARCY	500 BLOCK OF NOVA
600 BLOCK OF HINTZE	3500 BLOCK OF MARCY	400 BLOCK OF TROY
600 BLOCK OF HINTZE	3500 BLOCK OF MARCY	400 BLOCK OF TROY
3600 BLOCK OF LERDAHL	3600 BLOCK OF MARCY	400 BLOCK OF TROY
3500 BLOCK OF LITTLE FLEUR	3600 BLOCK OF MARCY	400 BLOCK OF TROY
3500 BLOCK OF LITTLE FLEUR	3600 BLOCK OF MARCY	400 BLOCK OF TROY
400 BLOCK OF LUSTER	3600 BLOCK OF MARCY	500 BLOCK OF TROY
400 BLOCK OF LUSTER	3600 BLOCK OF MARCY	500 BLOCK OF TROY
400 BLOCK OF LUSTER	3600 BLOCK OF MARCY	500 BLOCK OF TROY
400 BLOCK OF LUSTER	3600 BLOCK OF MARCY	500 BLOCK OF TROY
400 BLOCK OF LUSTER	3600 BLOCK OF MARCY	500 BLOCK OF TROY
400 BLOCK OF LUSTER	500 BLOCK OF MORNINGSTAR	500 BLOCK OF TROY
400 BLOCK OF LUSTER	500 BLOCK OF MORNINGSTAR	500 BLOCK OF TROY
400 BLOCK OF LUSTER	500 BLOCK OF MORNINGSTAR	500 BLOCK OF TROY
400 BLOCK OF LUSTER	500 BLOCK OF MORNINGSTAR	500 BLOCK OF TROY
500 BLOCK OF LUSTER	600 BLOCK OF MORNINGSTAR	500 BLOCK OF TROY
500 BLOCK OF LUSTER	600 BLOCK OF MORNINGSTAR	500 BLOCK OF TROY
3400 BLOCK OF MARCY	600 BLOCK OF MORNINGSTAR	600 BLOCK OF TROY
3400 BLOCK OF MARCY	600 BLOCK OF MORNINGSTAR	400 BLOCK OF WOODWARD
3400 BLOCK OF MARCY	600 BLOCK OF MORNINGSTAR	400 BLOCK OF WOODWARD
3400 BLOCK OF MARCY	600 BLOCK OF MORNINGSTAR	400 BLOCK OF WOODWARD
3400 BLOCK OF MARCY	400 BLOCK OF MUIR	400 BLOCK OF WOODWARD
3400 BLOCK OF MARCY	400 BLOCK OF MUIR	400 BLOCK OF WOODWARD
3400 BLOCK OF MARCY	400 BLOCK OF MUIR	400 BLOCK OF WOODWARD
3400 BLOCK OF MARCY	500 BLOCK OF NOVA	400 BLOCK OF WOODWARD

EXHIBIT 1
2025 Tree Trimming Block Numbers
and Street Names

1400 BLOCK OF HOOKER	1800 BLOCK OF	1900 BLOCK OF
1400 BLOCK OF HOOKER	NORTHWESTERN	NORTHWESTERN
1700 BLOCK OF HOOKER	1800 BLOCK OF	1900 BLOCK OF
1700 BLOCK OF HOOKER	NORTHWESTERN	NORTHWESTERN
1700 BLOCK OF HUXLEY	1800 BLOCK OF	1900 BLOCK OF
1800 BLOCK OF HUXLEY	NORTHWESTERN	NORTHWESTERN
1900 BLOCK OF KROPF	1800 BLOCK OF	1900 BLOCK OF
1500 BLOCK OF LOFTSGORDON	NORTHWESTERN	NORTHWESTERN
1500 BLOCK OF LOFTSGORDON	1800 BLOCK OF	1900 BLOCK OF
1500 BLOCK OF LOFTSGORDON	NORTHWESTERN	NORTHWESTERN
1500 BLOCK OF LOFTSGORDON	1800 BLOCK OF	1900 BLOCK OF
1500 BLOCK OF LOFTSGORDON	NORTHWESTERN	NORTHWESTERN
1500 BLOCK OF LOFTSGORDON	1800 BLOCK OF	1900 BLOCK OF
1500 BLOCK OF LOFTSGORDON	NORTHWESTERN	NORTHWESTERN
1500 BLOCK OF LOFTSGORDON	1800 BLOCK OF	1900 BLOCK OF
1500 BLOCK OF LOFTSGORDON	NORTHWESTERN	NORTHWESTERN
1600 BLOCK OF LOFTSGORDON	1800 BLOCK OF	1900 BLOCK OF
1600 BLOCK OF LOFTSGORDON	NORTHWESTERN	NORTHWESTERN
1600 BLOCK OF LOFTSGORDON	1800 BLOCK OF	1900 BLOCK OF
1600 BLOCK OF LOFTSGORDON	NORTHWESTERN	NORTHWESTERN
1600 BLOCK OF LOFTSGORDON	1800 BLOCK OF	1900 BLOCK OF
1600 BLOCK OF LOFTSGORDON	NORTHWESTERN	NORTHWESTERN
1600 BLOCK OF LOFTSGORDON	1800 BLOCK OF	1900 BLOCK OF
1600 BLOCK OF LOFTSGORDON	NORTHWESTERN	NORTHWESTERN
1600 BLOCK OF LOFTSGORDON	1800 BLOCK OF	1900 BLOCK OF
1600 BLOCK OF LOFTSGORDON	NORTHWESTERN	NORTHWESTERN
1600 BLOCK OF LOFTSGORDON	1800 BLOCK OF	1900 BLOCK OF
1600 BLOCK OF LOFTSGORDON	NORTHWESTERN	NORTHWESTERN
1600 BLOCK OF LOFTSGORDON	1800 BLOCK OF	1900 BLOCK OF
1600 BLOCK OF LOFTSGORDON	NORTHWESTERN	NORTHWESTERN
1700 BLOCK OF LOFTSGORDON	1800 BLOCK OF	1900 BLOCK OF
1700 BLOCK OF LOFTSGORDON	NORTHWESTERN	NORTHWESTERN
1700 BLOCK OF LOFTSGORDON	1800 BLOCK OF	1900 BLOCK OF
1700 BLOCK OF LOFTSGORDON	NORTHWESTERN	NORTHWESTERN
1700 BLOCK OF LOFTSGORDON	1800 BLOCK OF	1900 BLOCK OF
1700 BLOCK OF LOFTSGORDON	NORTHWESTERN	NORTHWESTERN
1700 BLOCK OF LOFTSGORDON	1800 BLOCK OF	1900 BLOCK OF
1700 BLOCK OF LOFTSGORDON	NORTHWESTERN	NORTHWESTERN
1700 BLOCK OF LOFTSGORDON	1800 BLOCK OF	1900 BLOCK OF
1700 BLOCK OF LOFTSGORDON	NORTHWESTERN	NORTHWESTERN
1800 BLOCK OF LOFTSGORDON	1900 BLOCK OF	1900 BLOCK OF
1800 BLOCK OF LOFTSGORDON	NORTHWESTERN	NORTHWESTERN
1400 BLOCK OF LOGAN	1900 BLOCK OF	1900 BLOCK OF
1400 BLOCK OF LOGAN	NORTHWESTERN	NORTHWESTERN
1800 BLOCK OF	1900 BLOCK OF	1900 BLOCK OF
NORTHWESTERN	NORTHWESTERN	NORTHWESTERN
1800 BLOCK OF	1900 BLOCK OF	1400 BLOCK OF PLEASURE
NORTHWESTERN	NORTHWESTERN	1500 BLOCK OF PLEASURE
1800 BLOCK OF	1900 BLOCK OF	1500 BLOCK OF PLEASURE
NORTHWESTERN	NORTHWESTERN	1500 BLOCK OF PLEASURE
1800 BLOCK OF	1900 BLOCK OF	1500 BLOCK OF PLEASURE
NORTHWESTERN	NORTHWESTERN	1500 BLOCK OF PLEASURE

EXHIBIT 1
2025 Tree Trimming Block Numbers
and Street Names

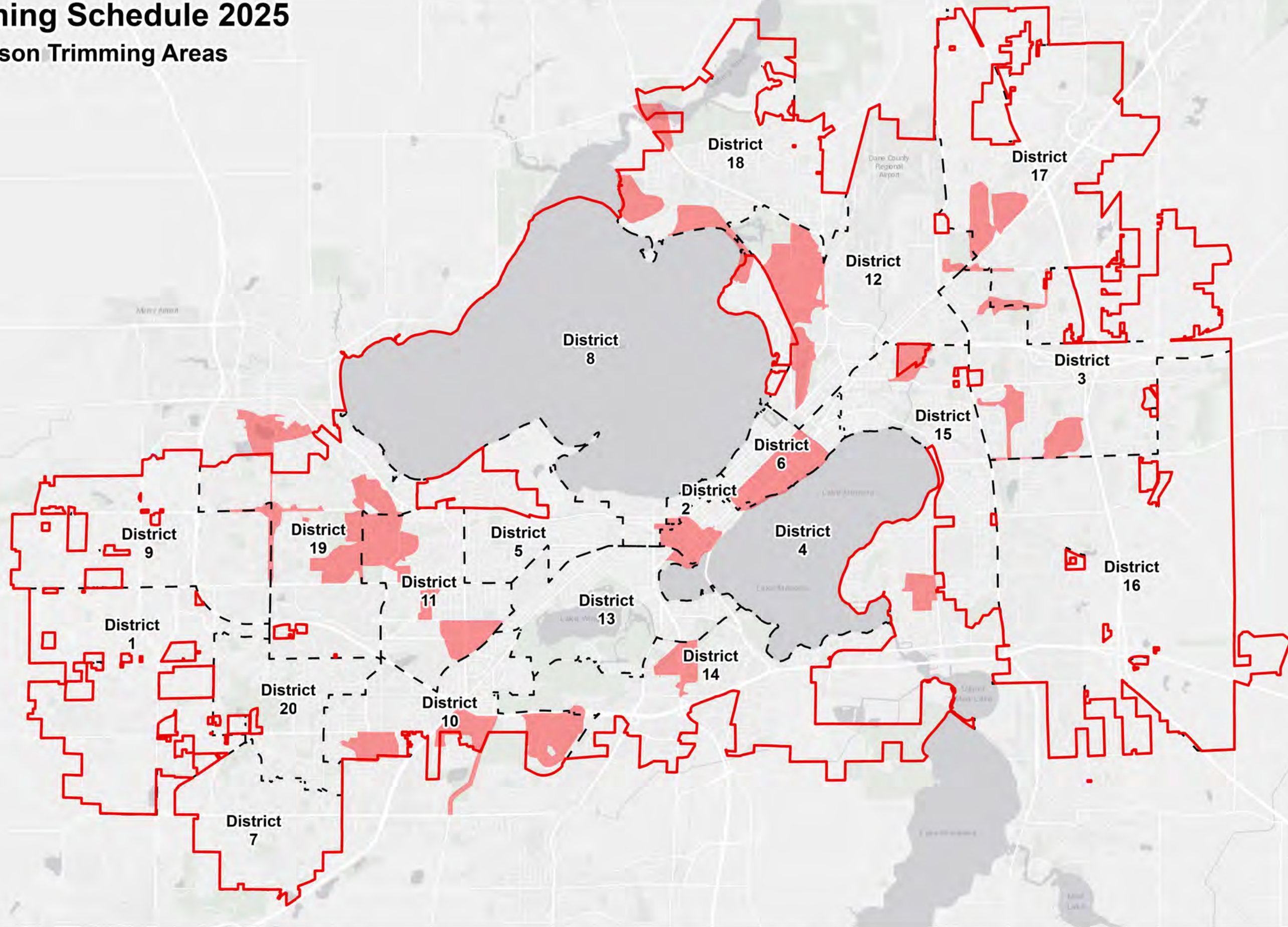
1900 BLOCK OF N SHERMAN	1900 BLOCK OF SPOHN	2400 BLOCK OF HUXLEY
1900 BLOCK OF N SHERMAN	1900 BLOCK OF SPOHN	2400 BLOCK OF HUXLEY
1900 BLOCK OF N SHERMAN	1900 BLOCK OF SPOHN	1800 BLOCK OF MANLEY
1900 BLOCK OF N SHERMAN	1900 BLOCK OF SPOHN	1900 BLOCK OF MANLEY
1900 BLOCK OF N SHERMAN	1900 BLOCK OF SPOHN	1800 BLOCK OF SACTHJEN
1900 BLOCK OF N SHERMAN	1900 BLOCK OF SPOHN	1900 BLOCK OF SACTHJEN
1900 BLOCK OF N SHERMAN	1900 BLOCK OF SPOHN	1900 BLOCK OF WINDOM
1900 BLOCK OF N SHERMAN	1900 BLOCK OF SPOHN	1700 BLOCK OF HEATH
2000 BLOCK OF N SHERMAN	1900 BLOCK OF SPOHN	1800 BLOCK OF HEATH
2000 BLOCK OF N SHERMAN	1900 BLOCK OF SPOHN	1800 BLOCK OF HEATH
2000 BLOCK OF N SHERMAN	1900 BLOCK OF SPOHN	1800 BLOCK OF HEATH
1800 BLOCK OF SPOHN	1500 BLOCK OF ALMO	1800 BLOCK OF HEATH
1800 BLOCK OF SPOHN	1500 BLOCK OF ALMO	1800 BLOCK OF HEATH
1800 BLOCK OF SPOHN	1500 BLOCK OF ARROWOOD	1800 BLOCK OF HEATH
1800 BLOCK OF SPOHN	1500 BLOCK OF ARROWOOD	1800 BLOCK OF HEATH
1800 BLOCK OF SPOHN	2200 BLOCK OF MONTEREY	1800 BLOCK OF HEATH
1800 BLOCK OF SPOHN	2200 BLOCK OF MONTEREY	1800 BLOCK OF HEATH
1800 BLOCK OF SPOHN	2300 BLOCK OF MONTEREY	1800 BLOCK OF HEATH
1800 BLOCK OF SPOHN	1400 BLOCK OF PLEASURE	1800 BLOCK OF HEATH
1800 BLOCK OF SPOHN	1800 BLOCK OF SHERIDAN	1800 BLOCK OF HEATH
1800 BLOCK OF SPOHN	1800 BLOCK OF SHERIDAN	1800 BLOCK OF HEATH
1800 BLOCK OF SPOHN	1800 BLOCK OF SHERIDAN	1800 BLOCK OF HEATH
1800 BLOCK OF SPOHN	1800 BLOCK OF SHERIDAN	1800 BLOCK OF HEATH
1800 BLOCK OF SPOHN	1800 BLOCK OF SHERIDAN	1800 BLOCK OF HEATH
1800 BLOCK OF SPOHN	1900 BLOCK OF SHERIDAN	1800 BLOCK OF HEATH
1800 BLOCK OF SPOHN	1900 BLOCK OF SHERIDAN	1800 BLOCK OF HEATH
1800 BLOCK OF SPOHN	1900 BLOCK OF SHERIDAN	1800 BLOCK OF HEATH
1800 BLOCK OF SPOHN	2000 BLOCK OF SHERIDAN	1800 BLOCK OF HEATH
1800 BLOCK OF SPOHN	2000 BLOCK OF SHERIDAN	1800 BLOCK OF HEATH
1800 BLOCK OF SPOHN	2000 BLOCK OF SHERIDAN	1800 BLOCK OF HEATH
1800 BLOCK OF SPOHN	2000 BLOCK OF SHERIDAN	1900 BLOCK OF HEATH
1800 BLOCK OF SPOHN	1400 BLOCK OF WYLDEWOOD	1900 BLOCK OF HEATH
1800 BLOCK OF SPOHN	1400 BLOCK OF WYLDEWOOD	1900 BLOCK OF HEATH
1900 BLOCK OF SPOHN	2700 BLOCK OF DRYDEN	1900 BLOCK OF HEATH
1900 BLOCK OF SPOHN	2700 BLOCK OF DRYDEN	1900 BLOCK OF HEATH
1900 BLOCK OF SPOHN	1700 BLOCK OF ELKA	1900 BLOCK OF HEATH
1900 BLOCK OF SPOHN	1800 BLOCK OF ELKA	1900 BLOCK OF HEATH
1900 BLOCK OF SPOHN	1800 BLOCK OF ELKA	1900 BLOCK OF HEATH
1900 BLOCK OF SPOHN	1800 BLOCK OF ELKA	1900 BLOCK OF HEATH
1900 BLOCK OF SPOHN	1800 BLOCK OF ELKA	1900 BLOCK OF HEATH
1900 BLOCK OF SPOHN	1900 BLOCK OF ELKA	1900 BLOCK OF HEATH

EXHIBIT 1
2025 Tree Trimming Block Numbers
and Street Names

2600 BLOCK OF PORTAGE	4700 BLOCK OF DECLARATION	5700 BLOCK OF THRUSH
2700 BLOCK OF PORTAGE	1300 BLOCK OF BULTMAN	5800 BLOCK OF THRUSH
2700 BLOCK OF PORTAGE	1300 BLOCK OF BULTMAN	
2800 BLOCK OF PORTAGE	2100 BLOCK OF ASPEN	
2900 BLOCK OF PORTAGE	2100 BLOCK OF ASPEN	
2900 BLOCK OF PORTAGE	2100 BLOCK OF ASPEN	
2900 BLOCK OF PORTAGE	2100 BLOCK OF ASPEN	
2900 BLOCK OF PORTAGE	5700 BLOCK OF BALSAM	
3000 BLOCK OF PORTAGE	5700 BLOCK OF BALSAM	
3000 BLOCK OF PORTAGE	5400 BLOCK OF DENTON	
3000 BLOCK OF PORTAGE	5400 BLOCK OF DENTON	
3000 BLOCK OF PORTAGE	5400 BLOCK OF DENTON	
3100 BLOCK OF PORTAGE	5400 BLOCK OF DENTON	
3100 BLOCK OF PORTAGE	5500 BLOCK OF DENTON	
3100 BLOCK OF PORTAGE	2000 BLOCK OF GILBERT	
3100 BLOCK OF PORTAGE	2300 BLOCK OF GILBERT	
3200 BLOCK OF PORTAGE	2100 BLOCK OF IRIS	
3200 BLOCK OF PORTAGE	2100 BLOCK OF IRIS	
3200 BLOCK OF PORTAGE	2100 BLOCK OF IRIS	
3200 BLOCK OF PORTAGE	2100 BLOCK OF IRIS	
3300 BLOCK OF PORTAGE	5300 BLOCK OF KRONCKE	
3300 BLOCK OF PORTAGE	5300 BLOCK OF KRONCKE	
3300 BLOCK OF PORTAGE	5400 BLOCK OF KRONCKE	
3400 BLOCK OF PORTAGE	5400 BLOCK OF KRONCKE	
3400 BLOCK OF PORTAGE	5600 BLOCK OF KRONCKE	
3400 BLOCK OF PORTAGE	5600 BLOCK OF KRONCKE	
3400 BLOCK OF PORTAGE	5700 BLOCK OF KRONCKE	
2200 BLOCK OF STUART	0 BLOCK OF LELAND	
2200 BLOCK OF STUART	2100 BLOCK OF LELAND	
4100 BLOCK OF SUNNYSIDE	5700 BLOCK OF MEADOWOOD	
4200 BLOCK OF SUNNYSIDE	5900 BLOCK OF RIVA	
4600 BLOCK OF ARMISTICE	2100 BLOCK OF TANAGER	
4600 BLOCK OF ARMISTICE	2200 BLOCK OF TEAL	
4700 BLOCK OF ARMISTICE	2200 BLOCK OF TEAL	
4700 BLOCK OF ARMISTICE	2200 BLOCK OF TEAL	
4600 BLOCK OF BUNKER HILL	2200 BLOCK OF TEAL	
4600 BLOCK OF BUNKER HILL	5700 BLOCK OF THRUSH	
4700 BLOCK OF BUNKER HILL	5700 BLOCK OF THRUSH	
4600 BLOCK OF DECLARATION	5700 BLOCK OF THRUSH	
4600 BLOCK OF DECLARATION	5700 BLOCK OF THRUSH	
4600 BLOCK OF DECLARATION	5700 BLOCK OF THRUSH	

Tree Pruning Schedule 2025

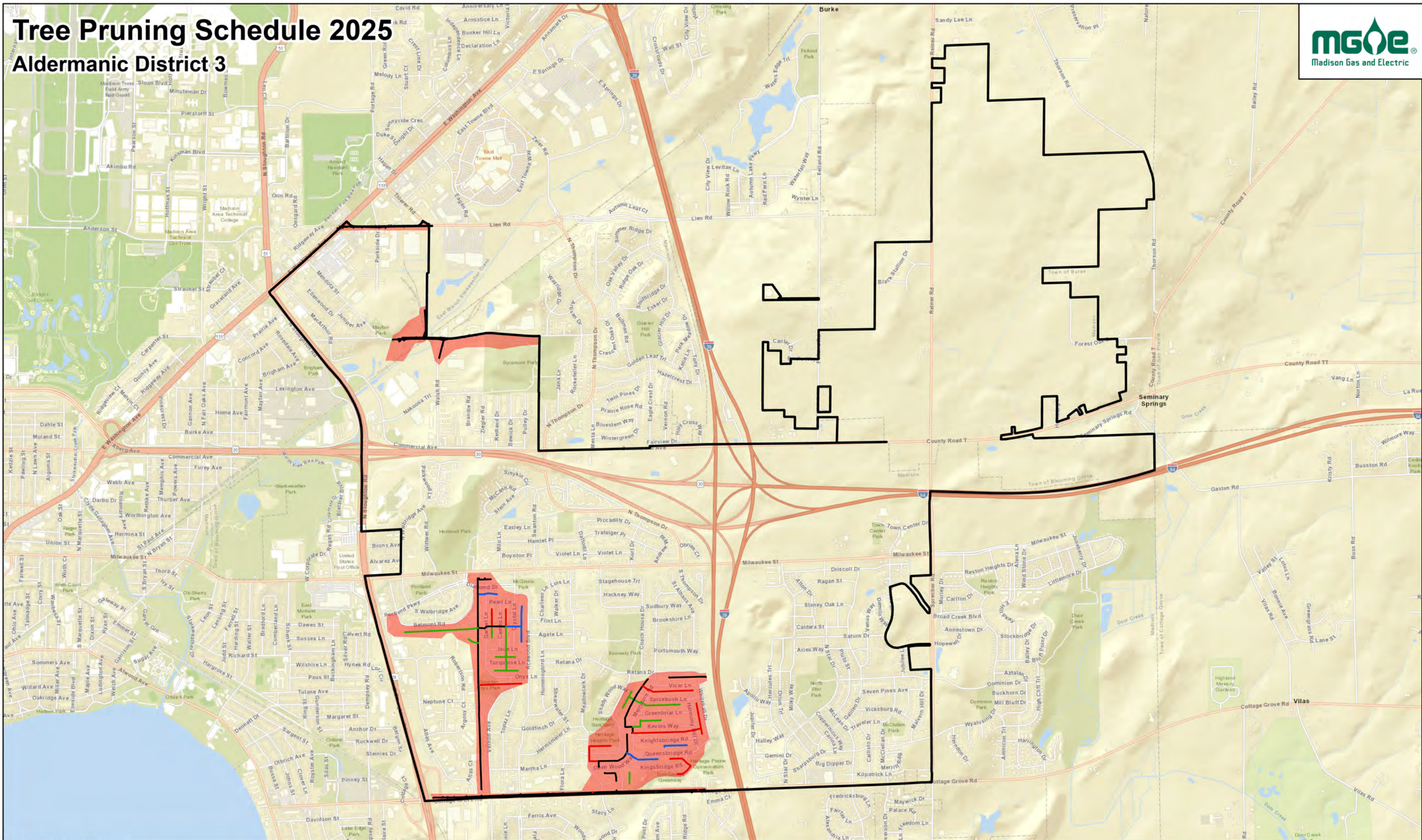
City of Madison Trimming Areas



GIS Data / Mapping Disclaimer
Madison Gas and Electric Company ("MGE") is providing you access to its GIS mapping data ("Information"), in electronic format or print format, as a resource of general information for use "as-is." The Information provided is for reference purposes only and is and shall remain the property of MGE. This Information may not be copied, distributed, rented, or altered for subsequent use, in whole or in part, without the express written consent of MGE. The Information provided may contain inaccuracies or errors. Source data used for the Information may have been collected at different scales, times or definitions, resulting in inconsistencies among features represented together as part of this Information. MGE makes no representation regarding the accuracy, reliability, or completeness of the information. The use of this Information is at your own risk.
By accessing this Information, you agree and acknowledge that receipt of the Information in no way releases you from following required and standard protocols in the course of normal business including but not limited to calling and relying upon Digger's Hotline.
By using the Information you hereby release MGE, its officers, directors, employees and agents from any responsibility or liability associated with its use. In no event will MGE be liable for any damages whatsoever that may arise out of the use of the Information.
For questions, contact Steve Marymee (smarymee@mge.com) or Zach Lindfors (zlindfors@mge.com)

Tree Pruning Schedule 2025

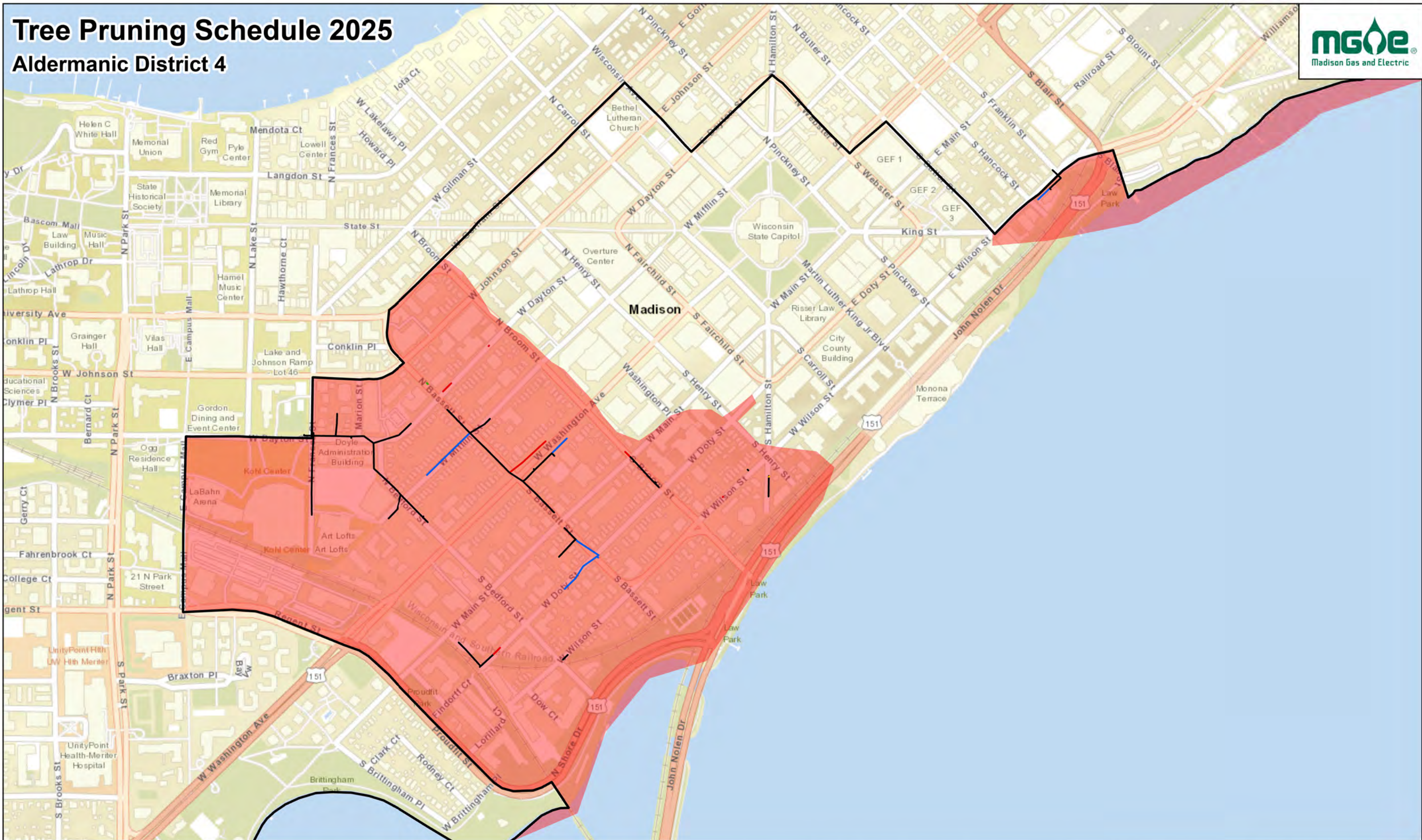
Aldermanic District 3



GIS Data / Mapping Disclaimer
Madison Gas and Electric Company ("MGE") is providing you access to its GIS mapping data ("Information"), in electronic format or print format, as a resource of general information for use "as-is." The Information provided is for reference purposes only and is and shall remain the property of MGE. This Information may not be copied, distributed, rented, or altered for subsequent use, in whole or in part, without the express written consent of MGE. The Information provided may contain inaccuracies or errors. Source data used for the Information may have been collected at different scales, times or definitions, resulting in inconsistencies among features represented together as part of this Information. MGE makes no representation regarding the accuracy, reliability, or completeness of the information. The use of this Information is at your own risk. By accessing this Information, you agree and acknowledge that receipt of the Information in no way releases you from following required and standard protocols in the course of normal business including but not limited to calling and relying upon Digger's Hotline. By using the Information you hereby release MGE, its officers, directors, employees and agents from any responsibility or liability associated with its use. In no event will MGE be liable for any damages whatsoever that may arise out of the use of the Information. For questions, contact Steve Marymee (smarymee@mge.com) or Zach Lindfors (zclindfors@mge.com)

Tree Pruning Schedule 2025

Aldermanic District 4



GIS Data / Mapping Disclaimer

Madison Gas and Electric Company ("MGE") is providing you access to its GIS mapping data ("Information"), in electronic format or print format, as a resource of general information for use "as-is." The Information provided is for reference purposes only and is and shall remain the property of MGE. This Information may not be copied, distributed, rented, or altered for subsequent use, in whole or in part, without the express written consent of MGE. The Information provided may contain inaccuracies or errors. Source data used for the Information may have been collected at different scales, times or definitions, resulting in inconsistencies among features represented together as part of this Information. MGE makes no representation regarding the accuracy, reliability, or completeness of the information. The use of this Information is at your own risk.

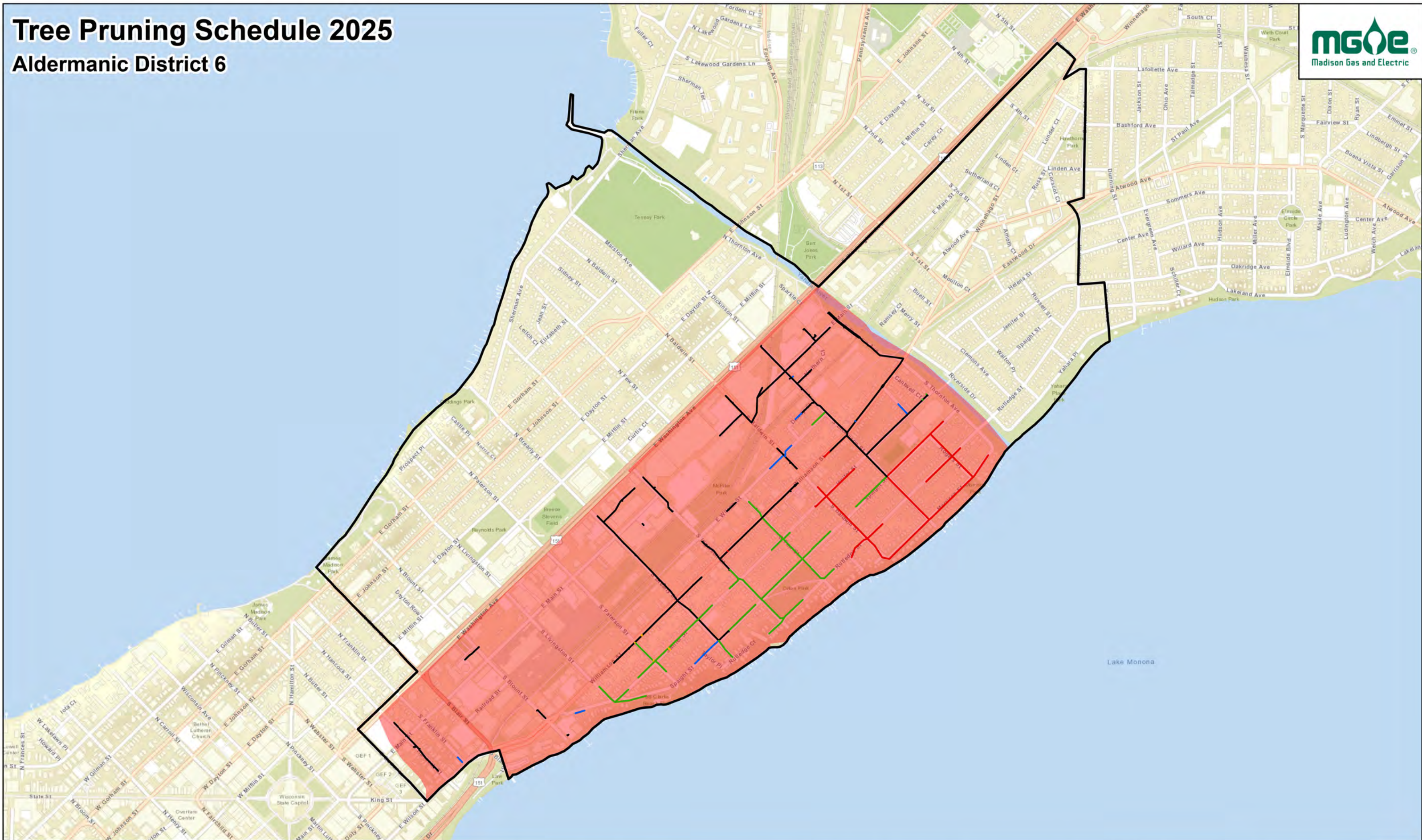
By accessing this Information, you agree and acknowledge that receipt of the Information in no way releases you from following required and standard protocols in the course of normal business including but not limited to calling and relying upon Digger's Hotline.

By using the Information you hereby release MGE, its officers, directors, employees and agents from any responsibility or liability associated with its use. In no event will MGE be liable for any damages whatsoever that may arise out of the use of the Information.

For questions, contact Steve Marymee (smarymee@mge.com) or Zach Lindfors (zllndfors@mge.com)

Tree Pruning Schedule 2025

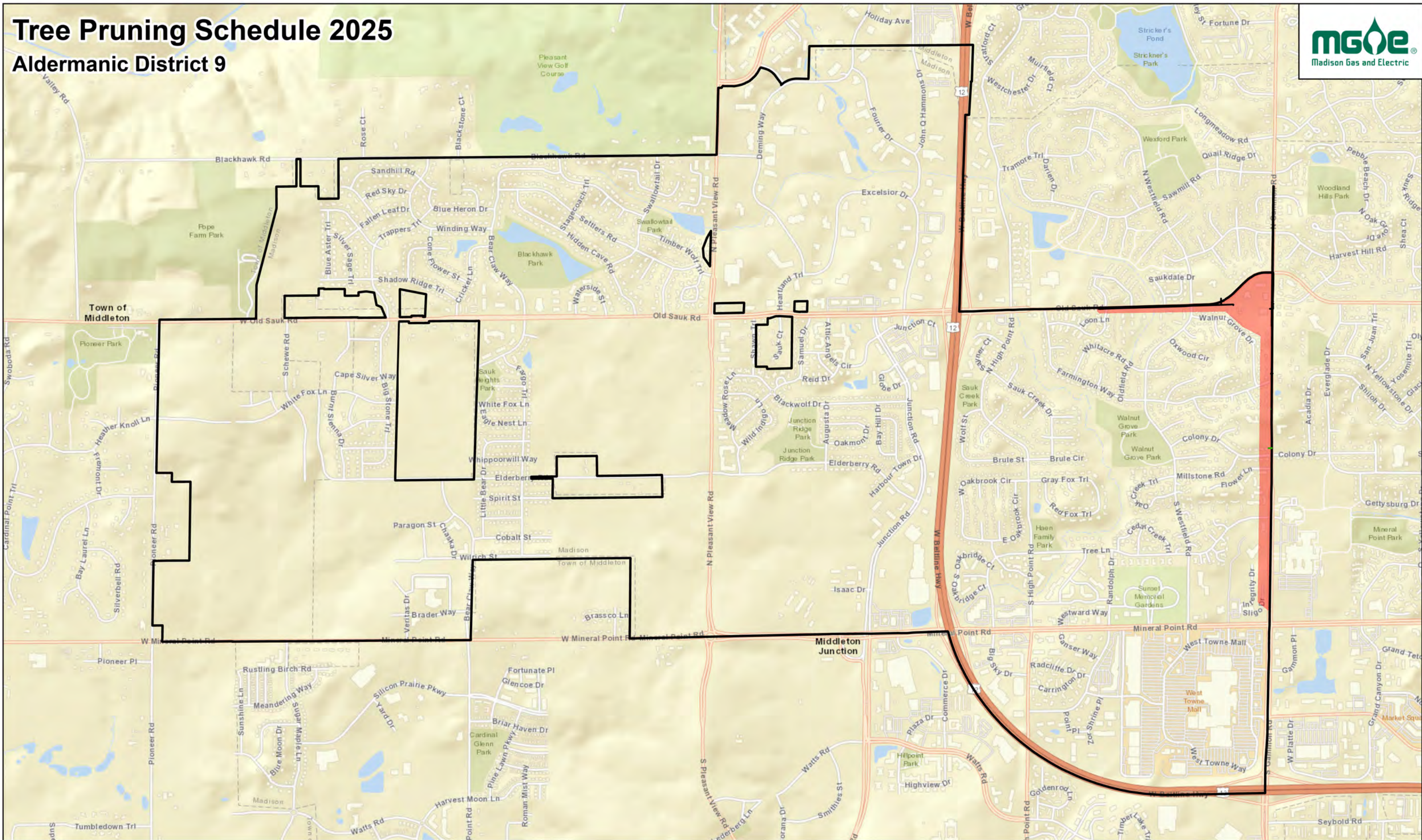
Aldermanic District 6



GIS Data / Mapping Disclaimer
Madison Gas and Electric Company ("MGE") is providing you access to its GIS mapping data ("Information"), in electronic format or print format, as a resource of general information for use "as-is." The Information provided is for reference purposes only and is and shall remain the property of MGE. This Information may not be copied, distributed, rented, or altered for subsequent use, in whole or in part, without the express written consent of MGE. The Information provided may contain inaccuracies or errors. Source data used for the Information may have been collected at different scales, times or definitions, resulting in inconsistencies among features represented together as part of this Information. MGE makes no representation regarding the accuracy, reliability, or completeness of the information. The use of this Information is at your own risk. By accessing this Information, you agree and acknowledge that receipt of the Information in no way releases you from following required and standard protocols in the course of normal business including but not limited to calling and relying upon Digger's Hotline. By using the Information you hereby release MGE, its officers, directors, employees and agents from any responsibility or liability associated with its use. In no event will MGE be liable for any damages whatsoever that may arise out of the use of the Information. For questions, contact Steve Marymee (smarymee@mge.com) or Zach Lindfors (zllindfors@mge.com)

Tree Pruning Schedule 2025

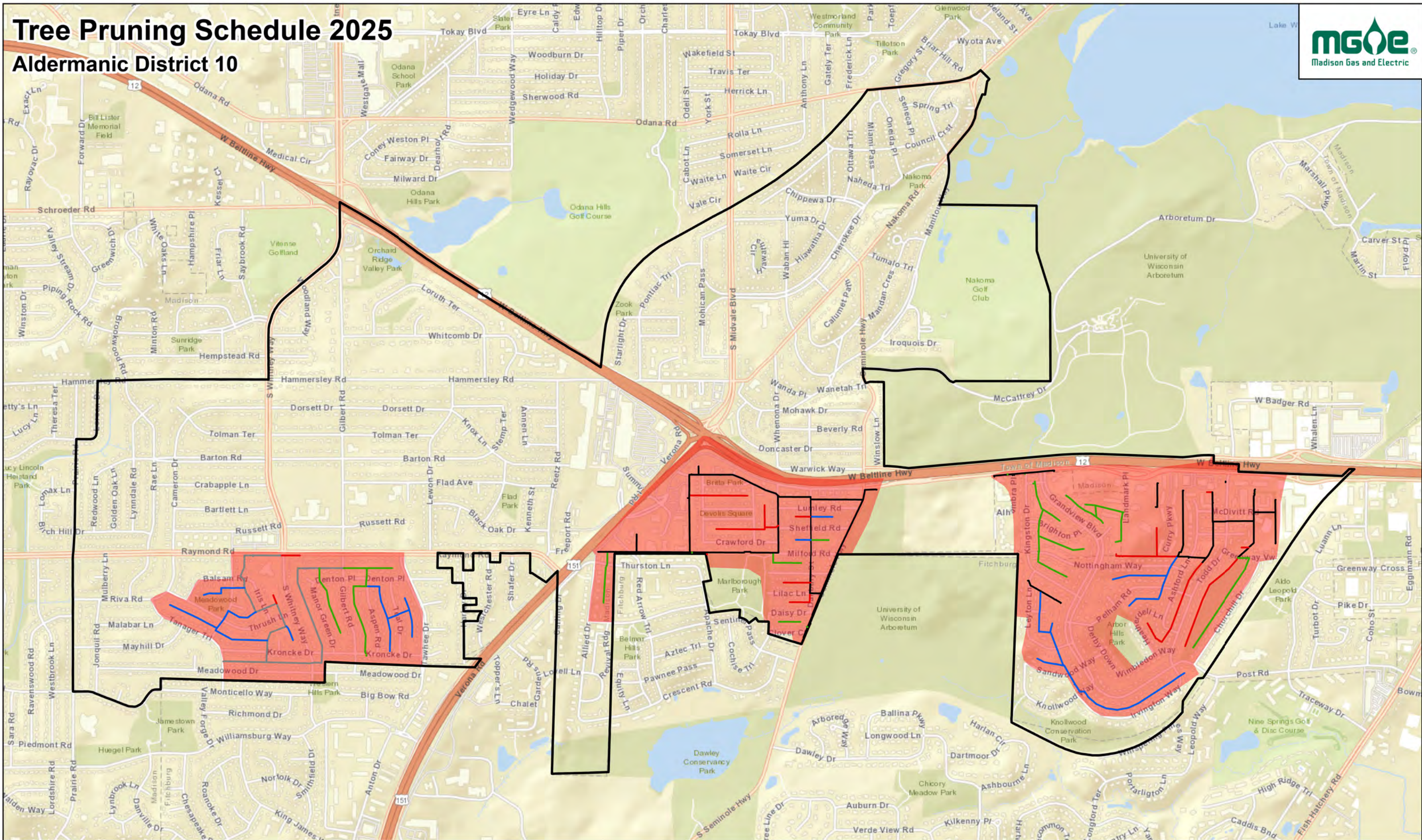
Aldermanic District 9



GIS Data / Mapping Disclaimer
Madison Gas and Electric Company ("MGE") is providing you access to its GIS mapping data ("Information"), in electronic format or print format, as a resource of general information for use "as-is." The Information provided is for reference purposes only and is and shall remain the property of MGE. This Information may not be copied, distributed, rented, or altered for subsequent use, in whole or in part, without the express written consent of MGE. The Information provided may contain inaccuracies or errors. Source data used for the Information may have been collected at different scales, times or definitions, resulting in inconsistencies among features represented together as part of this Information. MGE makes no representation regarding the accuracy, reliability, or completeness of the information. The use of this Information is at your own risk.
By accessing this Information, you agree and acknowledge that receipt of the Information in no way releases you from following required and standard protocols in the course of normal business including but not limited to calling and relying upon Digger's Hotline.
By using the Information you hereby release MGE, its officers, directors, employees and agents from any responsibility or liability associated with its use. In no event will MGE be liable for any damages whatsoever that may arise out of the use of the Information.
For questions, contact Steve Marymee (smarymee@mge.com) or Zach Lindfors (zclindfors@mge.com)

Tree Pruning Schedule 2025

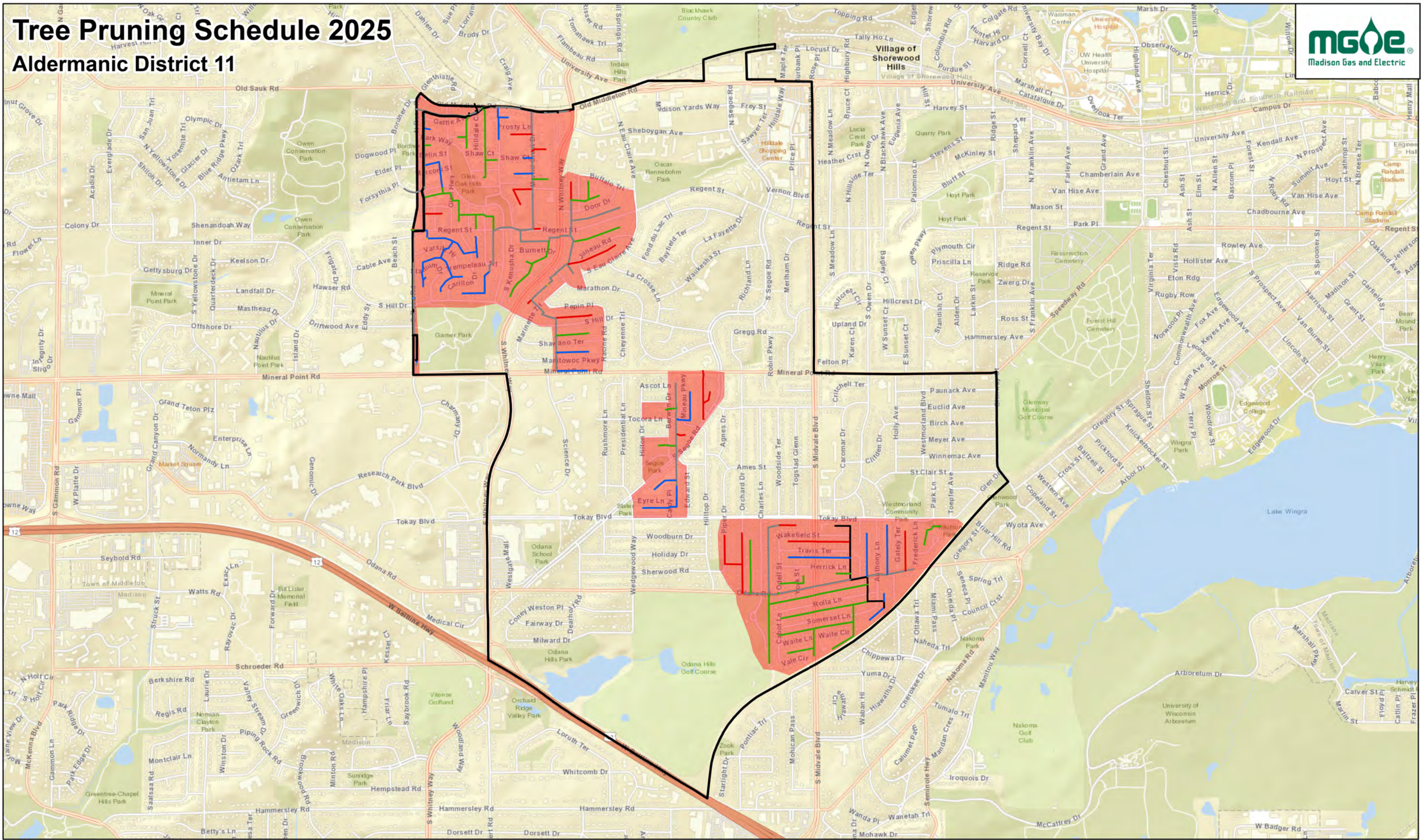
Aldermanic District 10



GIS Data / Mapping Disclaimer
Madison Gas and Electric Company ("MGE") is providing you access to its GIS mapping data ("Information"), in electronic format or print format, as a resource of general information for use "as-is." The Information provided is for reference purposes only and is and shall remain the property of MGE. This Information may not be copied, distributed, rented, or altered for subsequent use, in whole or in part, without the express written consent of MGE. The Information provided may contain inaccuracies or errors. Source data used for the Information may have been collected at different scales, times or definitions, resulting in inconsistencies among features represented together as part of this Information. MGE makes no representation regarding the accuracy, reliability, or completeness of the information. The use of this Information is at your own risk. By accessing this Information, you agree and acknowledge that receipt of the Information in no way releases you from following required and standard protocols in the course of normal business including but not limited to calling and relying upon Digger's Hotline. By using the Information you hereby release MGE, its officers, directors, employees and agents from any responsibility or liability associated with its use. In no event will MGE be liable for any damages whatsoever that may arise out of the use of the Information. For questions, contact Steve Marymee (smarymee@mge.com) or Zach Lindfors (zclindfors@mge.com)

Tree Pruning Schedule 2025

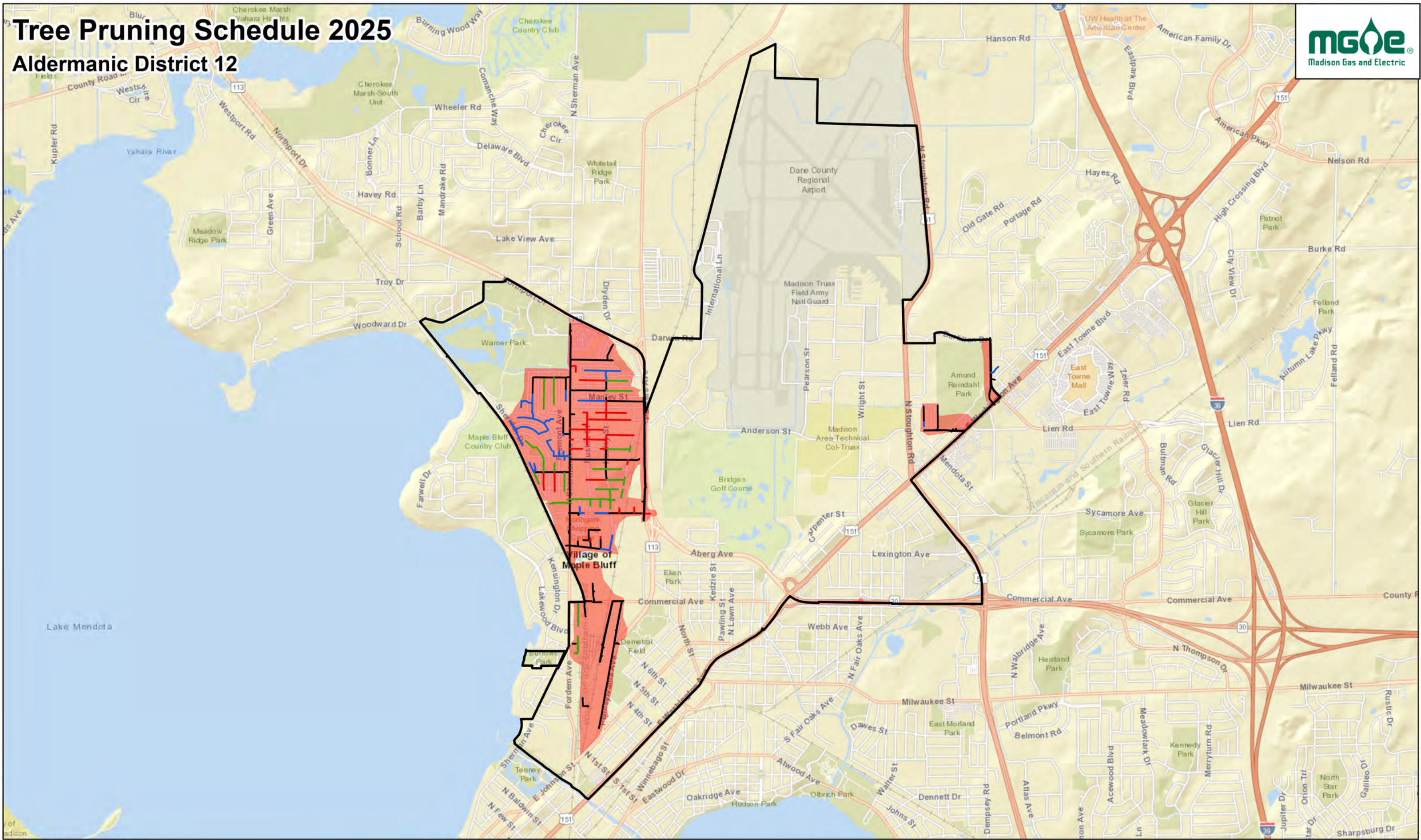
Aldermanic District 11



GIS Data / Mapping Disclaimer
Madison Gas and Electric Company ("MGE") is providing you access to its GIS mapping data ("Information"), in electronic format or print format, as a resource of general information for use "as-is." The Information provided is for reference purposes only and is and shall remain the property of MGE. This Information may not be copied, distributed, rented, or altered for subsequent use, in whole or in part, without the express written consent of MGE. The Information provided may contain inaccuracies or errors. Source data used for the Information may have been collected at different scales, times or definitions, resulting in inconsistencies among features represented together as part of this Information. MGE makes no representation regarding the accuracy, reliability, or completeness of the information. The use of this Information is at your own risk. By accessing this Information, you agree and acknowledge that receipt of the Information in no way releases you from following required and standard protocols in the course of normal business including but not limited to calling and relying upon Digger's Hotline. By using the Information you hereby release MGE, its officers, directors, employees and agents from any responsibility or liability associated with its use. In no event will MGE be liable for any damages whatsoever that may arise out of the use of the Information. For questions, contact Steve Marymee (smarymee@mge.com) or Zach Lindfors (zclindfors@mge.com)

Tree Pruning Schedule 2025

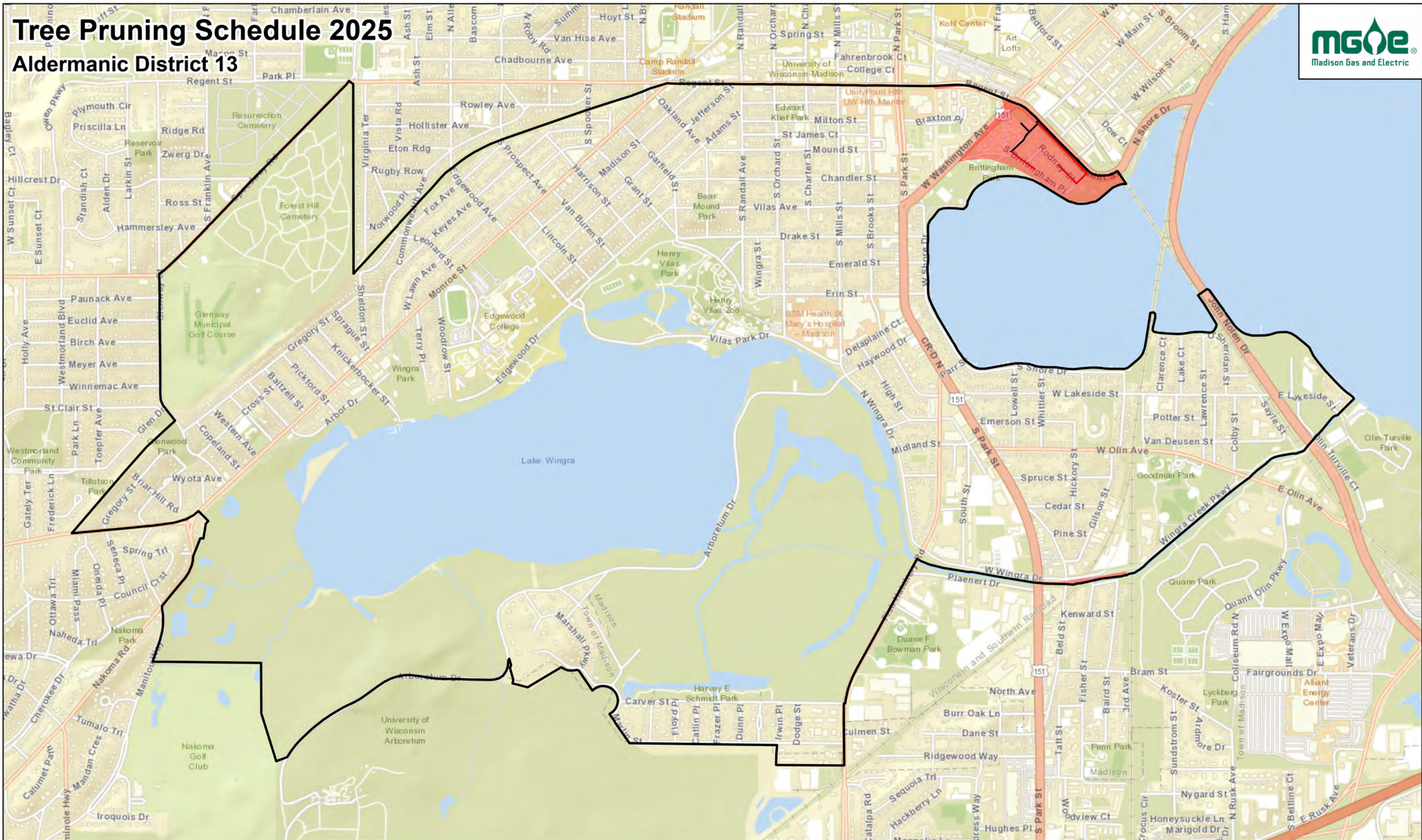
Aldermanic District 12



GIS Data / Mapping Disclaimer
Madison Gas and Electric Company ("MGE") is providing you access to its GIS mapping data ("Information"), in electronic format or print format, as a resource of general information for use "as-is." The Information provided is for reference purposes only and is and shall remain the property of MGE. This Information may not be copied, distributed, rented, or altered for subsequent use, in whole or in part, without the express written consent of MGE. The Information provided may contain inaccuracies or errors. Source data used for the Information may have been collected at different scales, times or definitions, resulting in inconsistencies among features represented together as part of this Information. MGE makes no representation regarding the accuracy, reliability, or completeness of the information. The use of this Information is at your own risk. By accessing this Information, you agree and acknowledge that receipt of the Information in no way releases you from following required and standard protocols in the course of normal business including but not limited to calling and relying upon Digger's Hotline. By using the Information you hereby release MGE, its officers, directors, employees and agents from any responsibility or liability associated with its use. In no event will MGE be liable for any damages whatsoever that may arise out of the use of the Information. For questions, contact Steve Marymee (smarymee@mge.com) or Zach Lindfors (zclindfors@mge.com)

Tree Pruning Schedule 2025

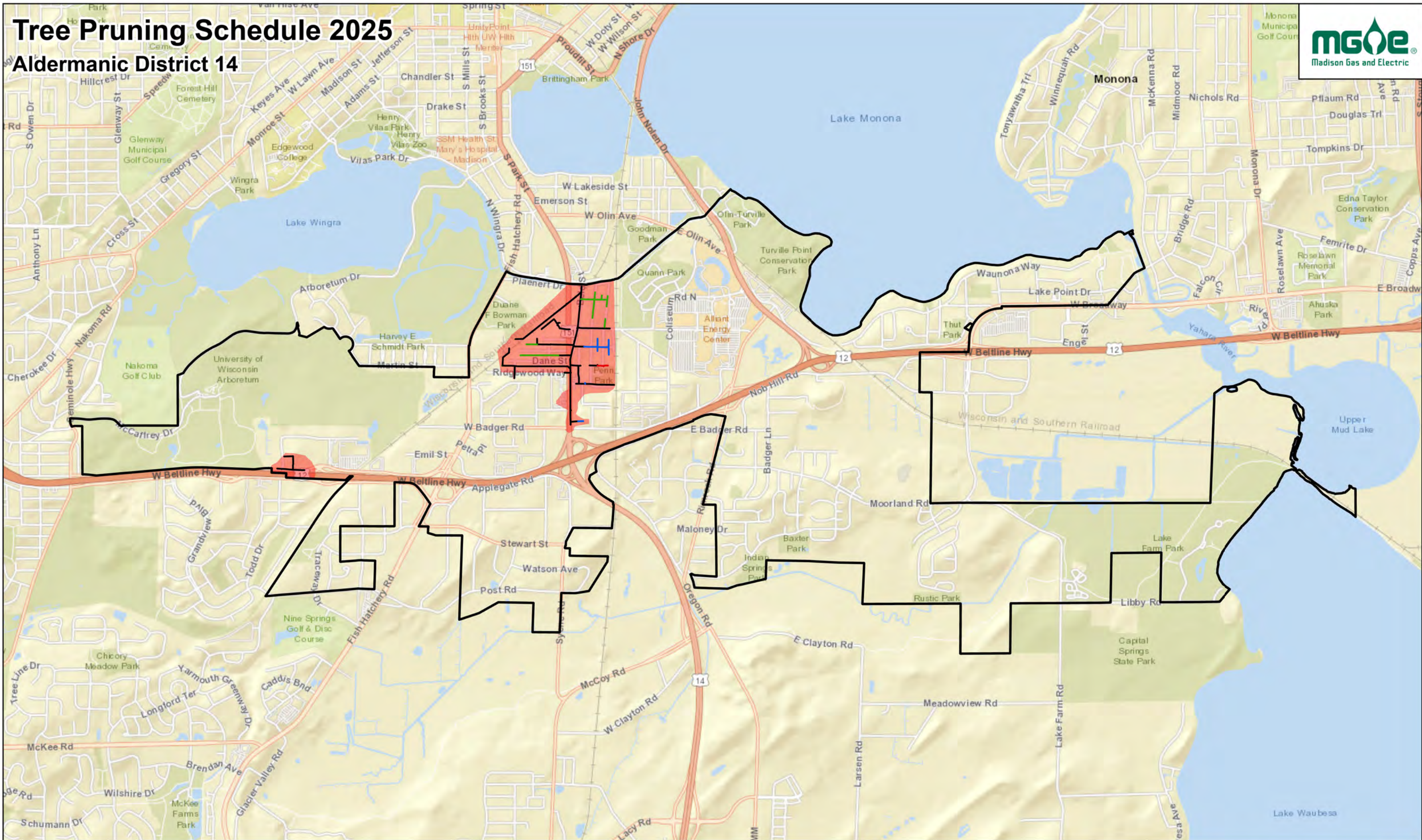
Aldermanic District 13



GIS Data / Mapping Disclaimer
Madison Gas and Electric Company ("MGE") is providing you access to its GIS mapping data ("Information"), in electronic format or print format, as a resource of general information for use "as-is." The Information provided is for reference purposes only and is and shall remain the property of MGE. This Information may not be copied, distributed, rented, or altered for subsequent use, in whole or in part, without the express written consent of MGE. The Information provided may contain inaccuracies or errors. Source data used for the Information may have been collected at different scales, times or definitions, resulting in inconsistencies among features represented together as part of this Information. MGE makes no representation regarding the accuracy, reliability, or completeness of the information. The use of this Information is at your own risk. By accessing this Information, you agree and acknowledge that receipt of the Information in no way releases you from following required and standard protocols in the course of normal business including but not limited to calling and relying upon Digger's Hotline. By using the Information you hereby release MGE, its officers, directors, employees and agents from any responsibility or liability associated with its use. In no event will MGE be liable for any damages whatsoever that may arise out of the use of the Information. For questions, contact Steve Marymee (smarymee@mge.com) or Zach Lindfors (zlindfors@mge.com)

Tree Pruning Schedule 2025

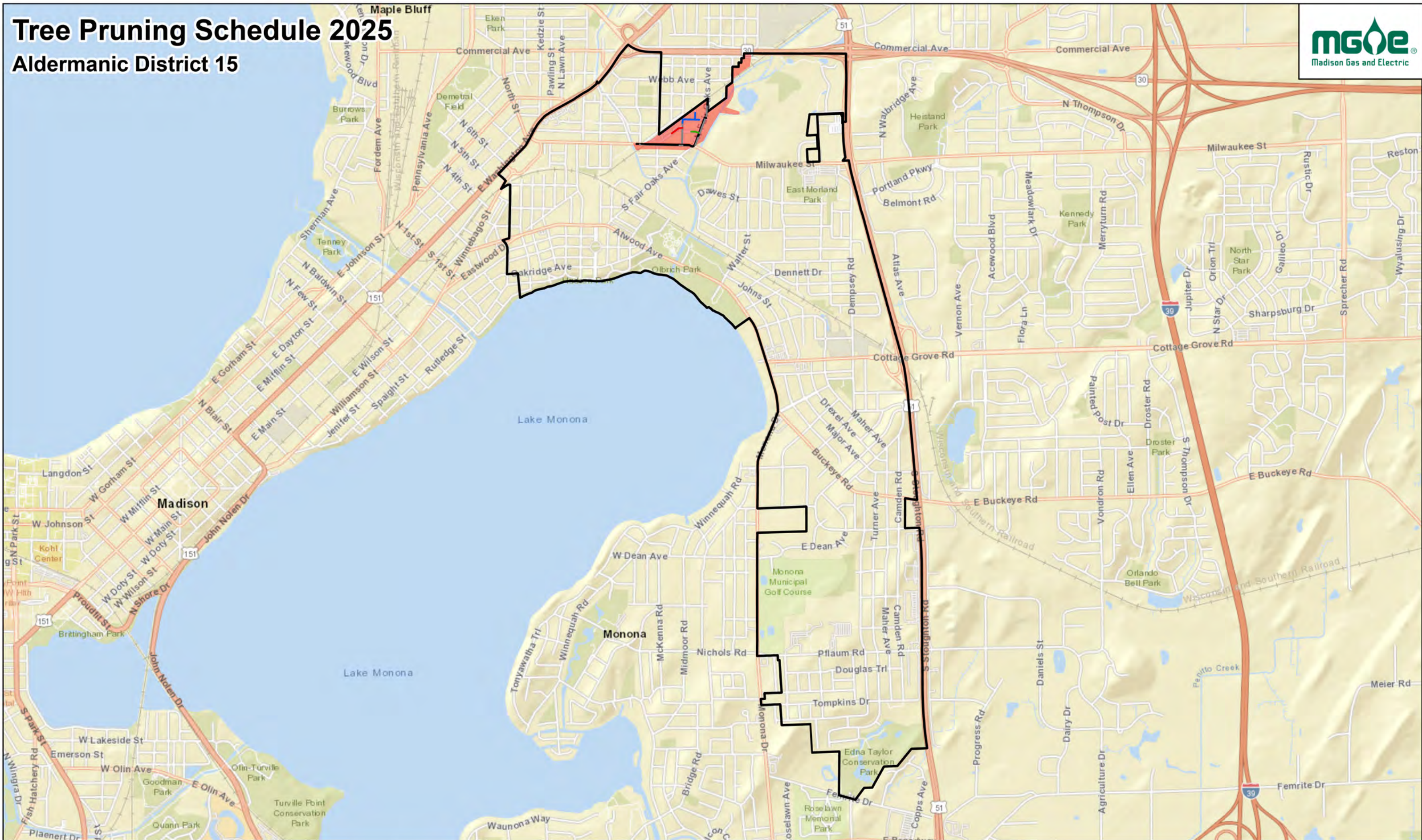
Aldermanic District 14



GIS Data / Mapping Disclaimer
Madison Gas and Electric Company ("MGE") is providing you access to its GIS mapping data ("Information"), in electronic format or print format, as a resource of general information for use "as-is." The Information provided is for reference purposes only and is and shall remain the property of MGE. This Information may not be copied, distributed, rented, or altered for subsequent use, in whole or in part, without the express written consent of MGE. The Information provided may contain inaccuracies or errors. Source data used for the Information may have been collected at different scales, times or definitions, resulting in inconsistencies among features represented together as part of this Information. MGE makes no representation regarding the accuracy, reliability, or completeness of the information. The use of this Information is at your own risk. By accessing this Information, you agree and acknowledge that receipt of the Information in no way releases you from following required and standard protocols in the course of normal business including but not limited to calling and relying upon Digger's Hotline. By using the Information you hereby release MGE, its officers, directors, employees and agents from any responsibility or liability associated with its use. In no event will MGE be liable for any damages whatsoever that may arise out of the use of the Information. For questions, contact Steve Marymee (smarymee@mge.com) or Zach Lindfors (zlindfors@mge.com)

Tree Pruning Schedule 2025

Aldermanic District 15



GIS Data / Mapping Disclaimer

Madison Gas and Electric Company ("MGE") is providing you access to its GIS mapping data ("Information"), in electronic format or print format, as a resource of general information for use "as-is." The Information provided is for reference purposes only and is and shall remain the property of MGE. This Information may not be copied, distributed, rented, or altered for subsequent use, in whole or in part, without the express written consent of MGE. The Information provided may contain inaccuracies or errors. Source data used for the Information may have been collected at different scales, times or definitions, resulting in inconsistencies among features represented together as part of this Information. MGE makes no representation regarding the accuracy, reliability, or completeness of the information. The use of this Information is at your own risk.

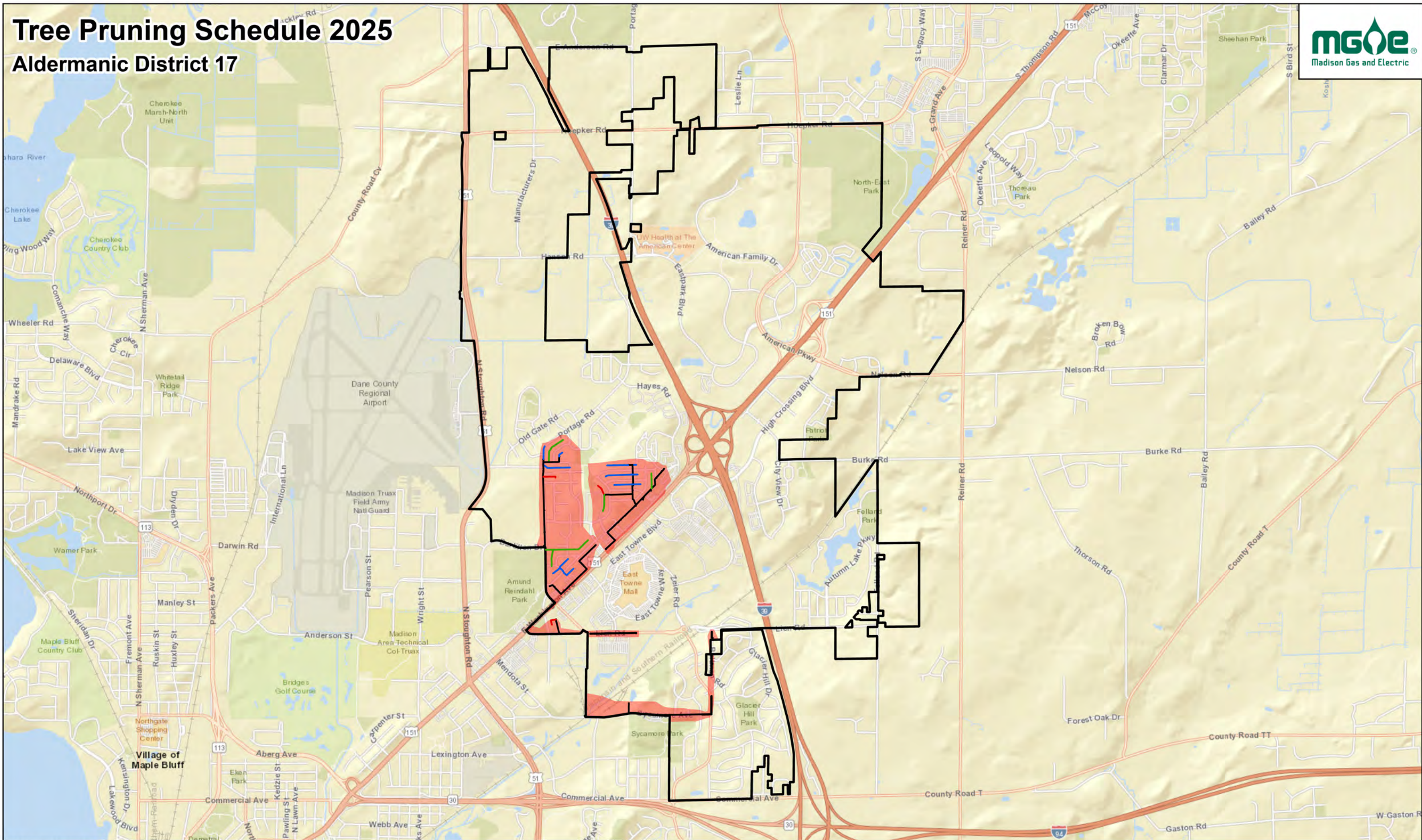
By accessing this Information, you agree and acknowledge that receipt of the Information in no way releases you from following required and standard protocols in the course of normal business including but not limited to calling and relying upon Digger's Hotline.

By using the Information you hereby release MGE, its officers, directors, employees and agents from any responsibility or liability associated with its use. In no event will MGE be liable for any damages whatsoever that may arise out of the use of the Information.

For questions, contact Steve Marymee (smarymee@mge.com) or Zach Lindfors (zllindfors@mge.com)

Tree Pruning Schedule 2025

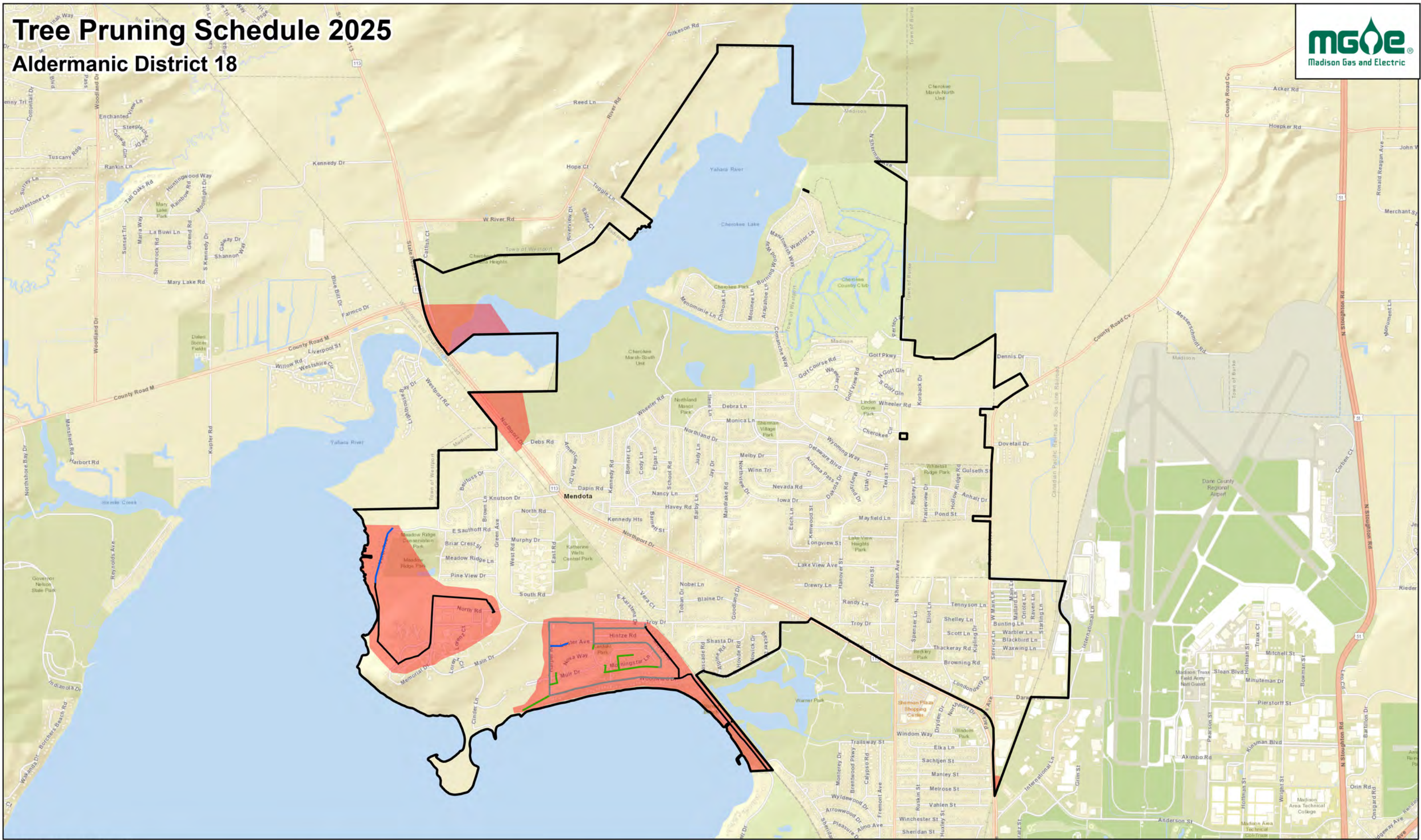
Aldermanic District 17



GIS Data / Mapping Disclaimer
Madison Gas and Electric Company ("MGE") is providing you access to its GIS mapping data ("Information"), in electronic format or print format, as a resource of general information for use "as-is." The Information provided is for reference purposes only and is and shall remain the property of MGE. This Information may not be copied, distributed, rented, or altered for subsequent use, in whole or in part, without the express written consent of MGE. The Information provided may contain inaccuracies or errors. Source data used for the Information may have been collected at different scales, times or definitions, resulting in inconsistencies among features represented together as part of this Information. MGE makes no representation regarding the accuracy, reliability, or completeness of the information. The use of this Information is at your own risk. By accessing this Information, you agree and acknowledge that receipt of the Information in no way releases you from following required and standard protocols in the course of normal business including but not limited to calling and relying upon Digger's Hotline. By using the Information you hereby release MGE, its officers, directors, employees and agents from any responsibility or liability associated with its use. In no event will MGE be liable for any damages whatsoever that may arise out of the use of the Information. For questions, contact Steve Marymee (smarymee@mge.com) or Zach Lindfors (zlindfors@mge.com)

Tree Pruning Schedule 2025

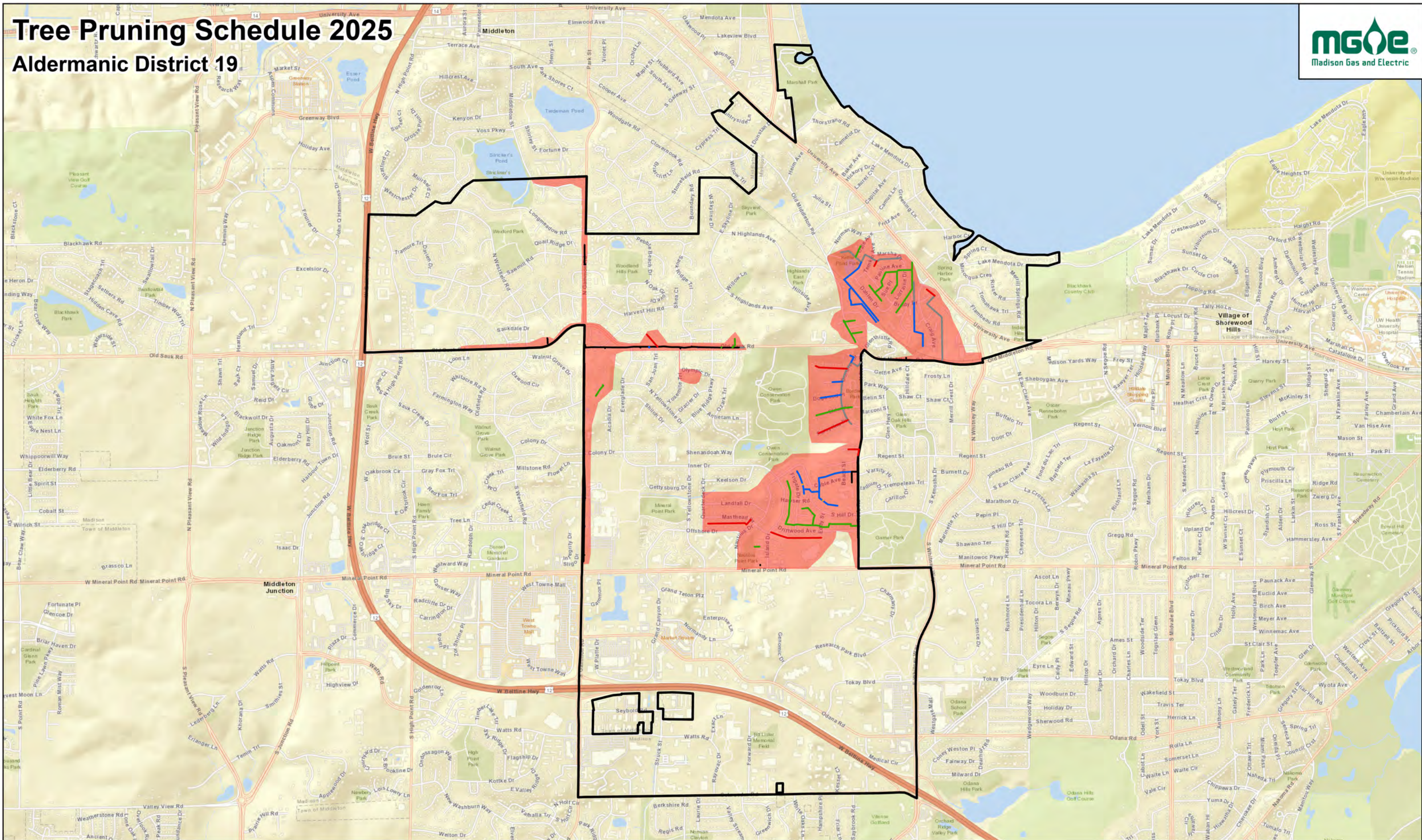
Aldermanic District 18



GIS Data / Mapping Disclaimer
Madison Gas and Electric Company ("MGE") is providing you access to its GIS mapping data ("Information"), in electronic format or print format, as a resource of general information for use "as-is." The Information provided is for reference purposes only and is and shall remain the property of MGE. This Information may not be copied, distributed, rented, or altered for subsequent use, in whole or in part, without the express written consent of MGE. The Information provided may contain inaccuracies or errors. Source data used for the Information may have been collected at different scales, times or definitions, resulting in inconsistencies among features represented together as part of this Information. MGE makes no representation regarding the accuracy, reliability, or completeness of the information. The use of this Information is at your own risk. By accessing this Information, you agree and acknowledge that receipt of the Information in no way releases you from following required and standard protocols in the course of normal business including but not limited to calling and relying upon Digger's Hotline. By using the Information you hereby release MGE, its officers, directors, employees and agents from any responsibility or liability associated with its use. In no event will MGE be liable for any damages whatsoever that may arise out of the use of the Information. For questions, contact Steve Marymee (smarymee@mge.com) or Zach Lindfors (zclindfors@mge.com)

Tree Pruning Schedule 2025

Aldermanic District 19



GIS Data / Mapping Disclaimer
Madison Gas and Electric Company ("MGE") is providing you access to its GIS mapping data ("Information"), in electronic format or print format, as a resource of general information for use "as-is." The Information provided is for reference purposes only and is and shall remain the property of MGE. This Information may not be copied, distributed, rented, or altered for subsequent use, in whole or in part, without the express written consent of MGE. The Information provided may contain inaccuracies or errors. Source data used for the Information may have been collected at different scales, times or definitions, resulting in inconsistencies among features represented together as part of this Information. MGE makes no representation regarding the accuracy, reliability, or completeness of the information. The use of this Information is at your own risk. By accessing this Information, you agree and acknowledge that receipt of the Information in no way releases you from following required and standard protocols in the course of normal business including but not limited to calling and relying upon Digger's Hotline. By using the Information you hereby release MGE, its officers, directors, employees and agents from any responsibility or liability associated with its use. In no event will MGE be liable for any damages whatsoever that may arise out of the use of the Information. For questions, contact Steve Marymee (smarymee@mge.com) or Zach Lindfors (zlindfors@mge.com)

Notice of Application for City of Madison Tree Pruning Permit

In order to prune City of Madison-owned trees within the public right-of-way of any street, alley, highway or greenway MGE is required to apply for a permit; MGE Forestry works with the City Forester and the City of Madison Streets Division on a yearly plan to prevent over-pruning of City-owned trees. MGE's 2024 plan for pruning trees on the public rights-of-ways will be considered by the Habitat Stewardship Subcommittee on Tuesday, February 11, 2025, at 4:30 P.M., via virtual meeting.

If you wish to speak at the virtual meeting, you must register. You can register at www.cityofmadison.com/city-hall/committees/meeting-schedule. Registration will open when the meeting is published on the Calendar, typically around noon on the Friday preceding the meeting, in this instance Friday, February 7, 2025. Interested participants can search for the date, click on the Habitat Stewardship Subcommittee meeting, then click "Register for Public Comment."

If you require an interpreter, materials in alternate formats, or other accommodations to access this public hearing, please contact City of Madison Parks Department at (608) 266-4711 or email us at habitatstewardshipsubcommittee@cityofmadison.com. Please make contact at least 72 hours prior to the date of this public hearing so that we can make proper accommodations.

Your safety and our electric system reliability are both important to us. Line clearance pruning is done to minimize tree-related storm damage and tree-caused electric system outages and conflicts. As a National Arbor Day "Tree Line USA Utility," we are concerned about the health and appearance of trees in your neighborhood. Our contract crews prune according to industry Best Management Practices as outlined by the International Society of Arboriculture. The crews also undergo yearly work- and safety-related training.

If your tree(s) require pruning, you will receive further notification before line clearance work begins.



Madison Gas and Electric Company
P.O. Box 1231
Madison, Wisconsin 53701-1231

PRESORTED
FIRST CLASS

Tree pruning in your neighborhood

Madison Gas and Electric (MGE) will be performing line clearance tree pruning in your neighborhood in the next few months. This postcard is the first of a two-part notification process before we begin our pruning work. Along with this postcard, you can expect to see an MGE Consulting Utility Arborist (CUA) in your neighborhood soon.

Our International Society of Arboriculture-certified CUAs will conduct a full inspection and assessment of all MGE's overhead electric facilities for vegetation conflicts in your neighborhood. You will be notified about any proposed pruning on your property prior to the work starting. MGE's goal is to prune for five years of clearance and remove tall-growing species under our primary wires.

As a recognized Tree Line USA utility for more than 20 years, MGE trains our tree service contractors to follow industry-accepted best management practices and internationally accepted tree-pruning methods. MGE's line clearance pruning is necessary for your safety, to help prevent storm damage, and to minimize electrical outages related to tree/wire conflicts. We thank you for your cooperation in our efforts.

If you have questions or special circumstances we should be aware of, such as a dog in the yard, a locked gate, or a tree you would like removed, please call MGE's Forestry Line at 608-252-7186 or 1-800-245-1125.



The amount of pruning is based on the type of tree and how close the tree is to the wires. These are examples of pruning according to international pruning standards.



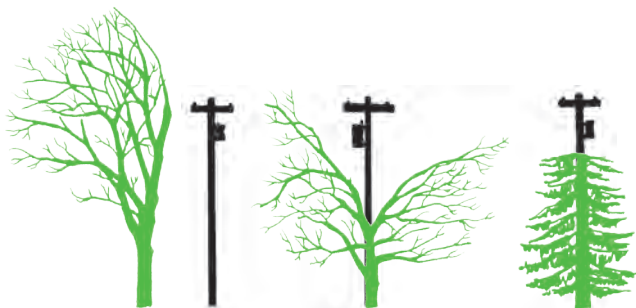


Madison Gas and Electric Company
P.O. Box 1231
Madison, Wisconsin 53701-1231

PRESORTED
FIRST CLASS

Tree pruning

The amount of pruning is based on the type of tree and how close the tree is to the wires. These are examples of pruning according to international pruning standards.



Planting near power lines?

Use our online selection guide to pick the best tree or shrub for your yard. Visit mge.com/trees. We also have a printed guide called *Power Planting*. Just call 252-7222 to get a copy, or download it at mge.com/brochures.

Small trees

(less than 25 feet tall)

Flowering Crabapple,
Hawthorne, Lilac,
Shrubs

Tall trees

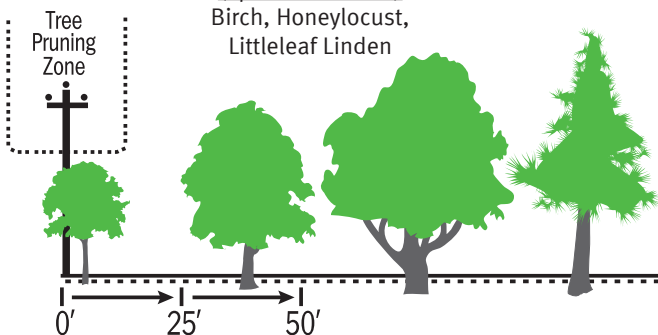
(more than 40 feet tall)

Ash, Maple, Oak

Medium trees

(up to 40 feet tall)

Birch, Honeylocust,
Littleleaf Linden





Madison Gas and Electric (MGE) will be pruning trees in your neighborhood. We prune trees near power lines for your safety, to prevent storm damage and to minimize electrical outages.

As a recognized Tree Line USA utility, MGE trains our tree service contractors to prune trees according to international pruning standards. They will prune to attain approximately four years of safe clearance.

You will be notified with more specific information prior to our crew starting work on your property. If a tree needs extensive pruning, you may talk to our crew about other options such as removing the tree.

If you have any questions or special circumstances we should be aware of, such as a dog in the yard or a tree you would like removed, please contact MGE's Forestry Line at 252-7186 or 1-800-245-1125.



Map Number _____



TREE PRUNING NOTIFICATION

MGE will have a professional pruning contractor trim or remove trees on your property. There is no charge for this work. Please review this notification, sign it and leave it on your door knob. **We will pick it up on:** _____

Print Name _____ Best time to call _____

Phone Number _____

Home Address _____

Location of Work _____

Work to be Done	Qty.	Species
Side Trims		
Top Trims		
V-Trims		
Removals		

Brush to be:

- Left Chipped and Blown
 Chipped and Removed Stacked and Slashed

Herbicide treatment of stumps Yes No We may need to drive equipment on driveway and/or yard when conditions allow. Yes No

Logs or larger pieces of wood 6" in diameter or greater will be cut into lengths approximately 18" to 2 feet and left for your use. **If you have any questions, please call.**

Forestry Representative _____ Phone _____

I certify that I am the property owner. I understand there will be no charge for this work and that the work will be performed at a later date.

Signature _____ Phone _____

If you do not have the authority to approve this notification or do not wish to, please indicate on reverse side of this card. You may also include any instructions or remarks on the back as well. **Thank you!**



Map Number

LINE CLEARANCE WORK NOTICE

Madison Gas and Electric Company (MGE) contracts with a professional line-clearing contractor to perform necessary tree pruning and/or sapling removal. There is no charge to you to perform this work. Crews will prune for approximately five years' growth. All brush will be chipped and removed. Learn more about MGE's tree-pruning process by visiting mge.com/pruning.

Work Location

Back Yard Front Yard Side Yard

Wire Type

Pole to Pole Pole to House

Work to be Done

Pruning

Qty.	Species	Notes

Sapling Removal

Y/N	Description

Work Access

We may need to drive equipment onto your property. This will only be done if site conditions allow.

Site	Y/N	Notes
Yard		
Driveway		

5.5" x 11"

Please call the forestry representative if herbicide use is desired or you require further notification before the work is performed.

Forestry Representative _____ Date _____
Phone _____

5.5" x 11"

MGE is committed to providing safe and reliable energy to our customers. Inadequate line clearance can create safety hazards and cause service interruptions to you, your neighbors and your community. As a recognized Tree Line USA utility, MGE thoroughly trains our tree service contractors to prune trees following international pruning standards. Our contractors are active members of the International Society of Arboriculture, the Wisconsin Arborist Association and the National Arbor Day Foundation. We admire beautiful trees and will make every effort to be fair with both you as our customer and the tree.





Madison Gas and Electric Company

P.O. Box 1231

Madison, WI 53701-1231

608-252-7000

your community energy company

January 17, 2025

Sent Via Email

lbrown@cityofmadison.com

Mr. Ian Brown
City of Madison Urban Forestry
Madison Streets Division
1402 Wingra Creek Parkway
Madison WI 53715

Subject: Tree Pruning Notice

Dear Mr. Brown:

This letter is to confirm that on Friday, January 17, 2025, Madison Gas and Electric Company delivered to the U.S. Post Office the following mailer:

- Tree Pruning Notice Postcard Mailer - City of Madison - 2025

If you have any further questions, please email me at dmaurer@mge.com or call me at 252-7913.

Sincerely,

Douglas J. Maurer
Manager Office Services

bw

cc: Tim Meisenheimer, MGE